

Franca by Fibre ⚡ood

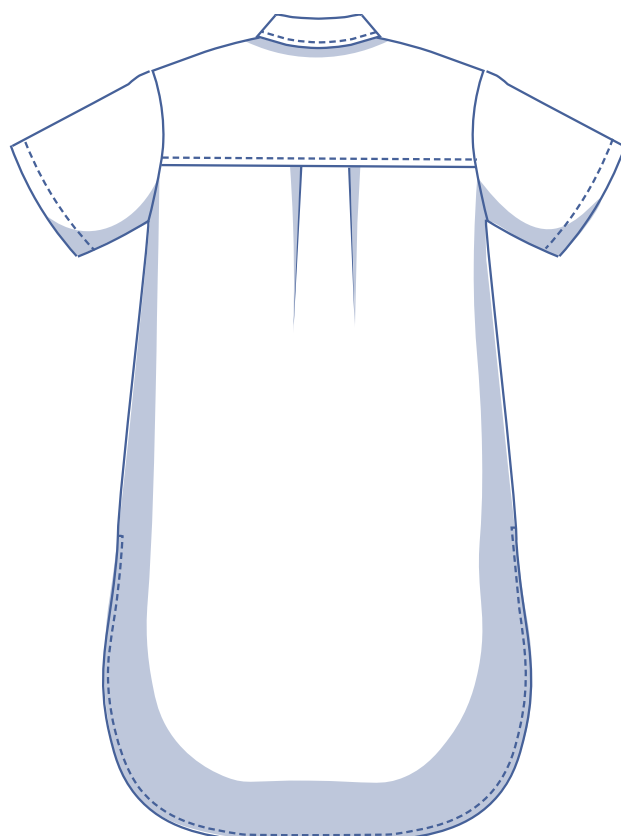
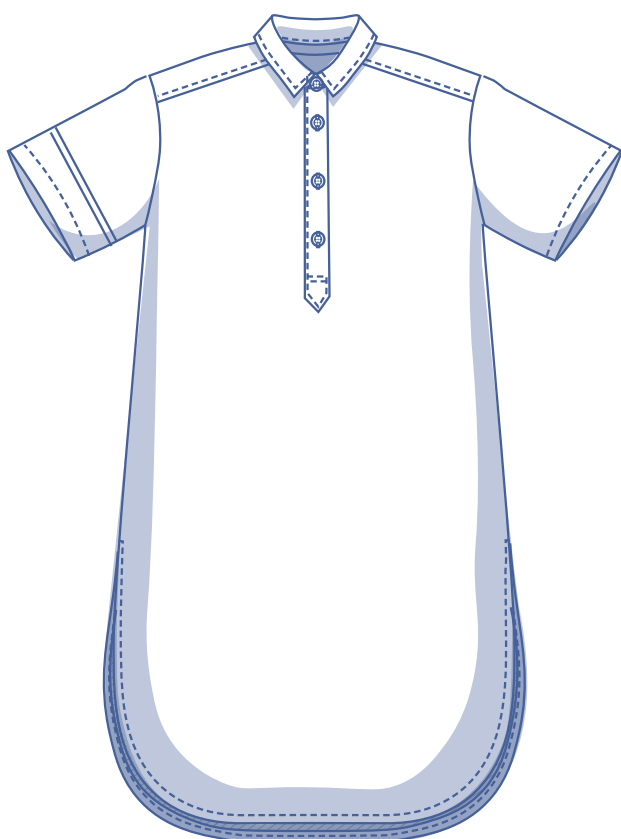


Franca by Fibre Mood



XS - XXXL

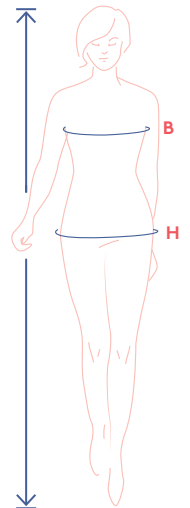
Freedom! The mid-length, Franca shirt dress enjoys making life easy for you. The large curved side slits at the bottom gives the design a gentle, friendly feel. But the polo collar, yoke at the back and short inset sleeves give it just the right dose of spirit. Dress up Franca in crepe or satin or go the cosy casual route with linen, for example. Altering the length is easy as 1-2-3. Franca also looks fab over skinny jeans, leggings or even wide-leg trousers. She's also sure to be your best friend at the beach in an airy cotton. Just slip her on over your swimsuit! This prize is one you won't ever want to let go of.



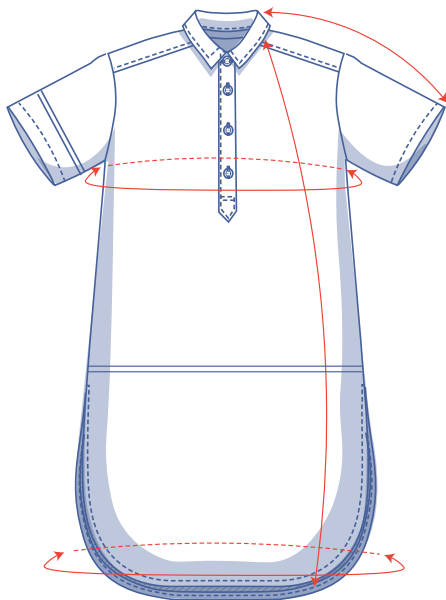
size chart (in cm)

size	XS		S		M		L		XL		XXL		XXXL		
	4	6	8	10	12	14	16	18	20	22	24	26	28	30	32
body height	160	164	166	167	168	169	170	171	172	172	172	172	172	172	172
B (bust)	76	80	84	88	92	96	100	104	110	116	122	128	134	140	146
H (hip)	86	90	94	97	100	103	106	109	115	120	125	130	135	140	145

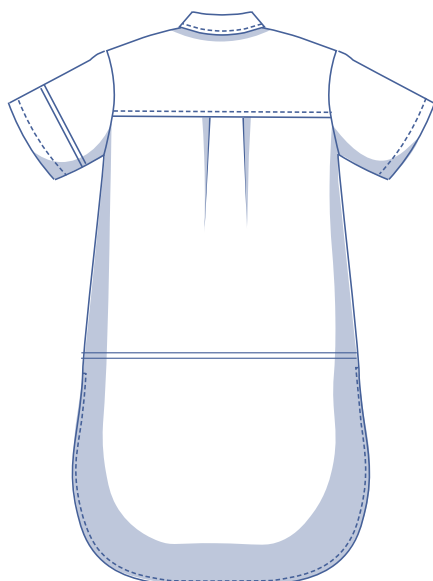
Choose your size based on your bust measurement. Pick the size that is the best match for your bust. If your bust measurement puts you between 2 sizes, then choose the size closest to your hip measurements. If your hip measurement are much wider than the corresponding measurements in the size chart, alter the pattern at the hips by tracing a larger size at the hip point, then blend the lines.



finished garment measurements (in cm)



— shorten or lengthen the pattern here



This chart's measurements are the pattern measurements based on the used fabric type and serve as a reference. Ease has been added to the width measurements (on top of the exact body measurements) for a more comfortable fit. Franca is designed to have an oversized cut. If needed, make the pattern a size bigger or smaller depending on the desired cut.

Compare the stated lengths to the measured or desired lengths. Lengthen or shorten the dress and/or the sleeves by cutting the pattern pieces at the indicated double lines. Then either increase the distance between the cut pieces by the desired amount (to lengthen) or overlap the pieces (to shorten). Make sure that the CF and CB lines and the side seams are always straight.



size	XS	S	M	L	XL	XXL	XXXL
length	112.75	114	115	116.25	118.75	120.25	122
sleeve length*	47.25	47.75	49.25	50.5	52.5	54.25	55.75
bust	109.75	117.75	125.75	133.75	143.75	155.75	167.75
hem circumference	117.25	125.25	133.25	141.75	151.75	164.5	176.5

* Including the shoulder length.

IMPORTANT

The amount of fabric used may change based on the alterations.

supplies



- Thread
- Iron-on interfacing: max. 45 cm
- Buttons (Ø 1.5 cm): 4
- Fabric: see table

fabric		XS	S	M	L	XL	XXL	XXXL
fabric width 110 cm	cm	300	310	315	330	355	360	370
fabric width 140 cm	cm	235	240	245	245	315	320	330

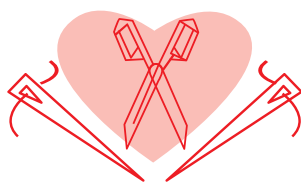
The corresponding fabric layout can be found on page 6 of these sewing instructions.

fabric advice



Make Franca in a fabric with a fluid drape. Woven fabrics such as viscose (crepe), polyester (crepe), cotton, satin, linen and Tencel are all good options. Knit fabrics also work as long as they have enough body. The details (collar, closure, etc.) won't look crisp with a light-weight, overly thin jersey.

Proud to be #Sewista



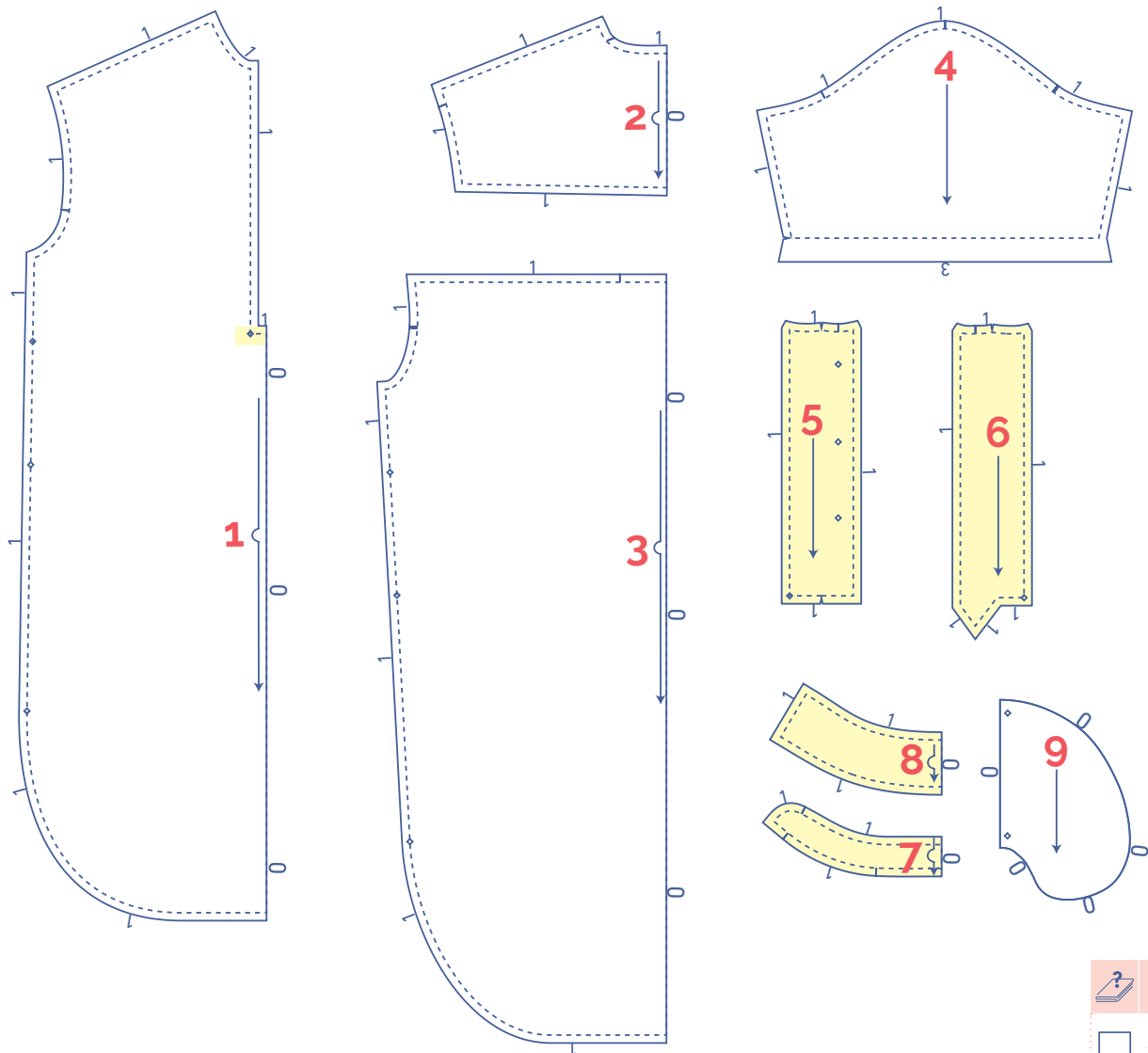
pattern pieces & seam allowances (in cm)


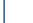

To sew the garment as described in the instructions, you must draw the illustrated seam allowances around the paper pattern pieces before cutting them out. If you are using a pdf version of the pattern, you may print it with or without seam allowances. If you print with seam allowances, the solid lines denote the cutting lines, and dashed lines denote the stitch lines. Check out the [video](#).

1. front: 1x on fabric fold
2. yoke: 1x on fabric fold
3. back: 1x on fabric fold
4. sleeve: 2x
5. polo placket LF: 1x
6. polo placket RF: 1x
7. collar band: 2x on fabric fold
8. collar: 2x on fabric fold
9. pocket: 4x

IMPORTANT

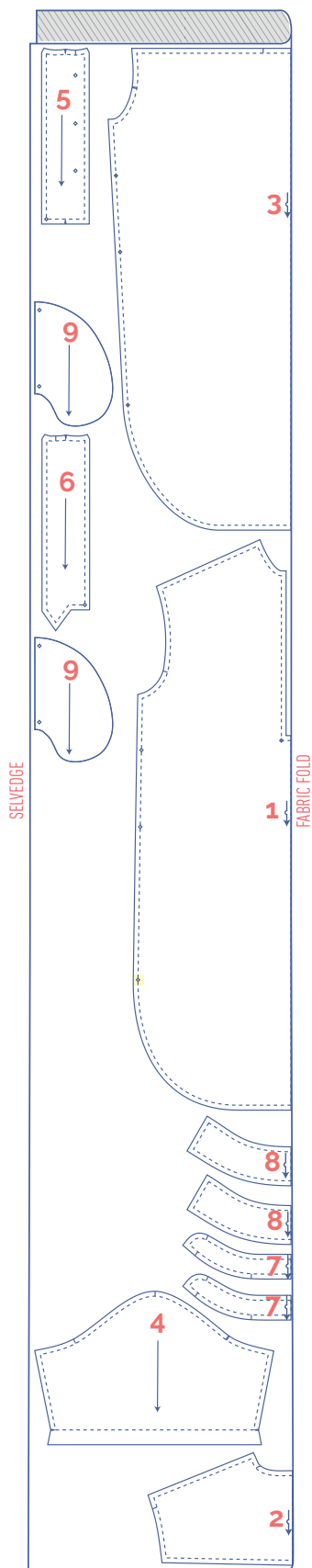
The pieces highlighted in light yellow have iron-on interfacing attached to the wrong side.



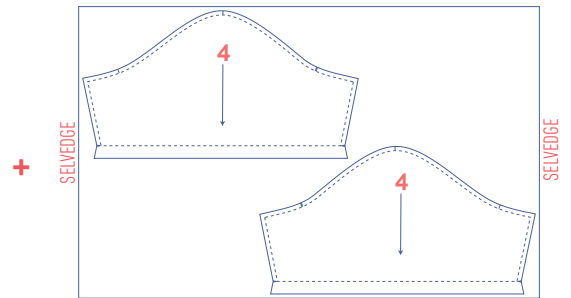
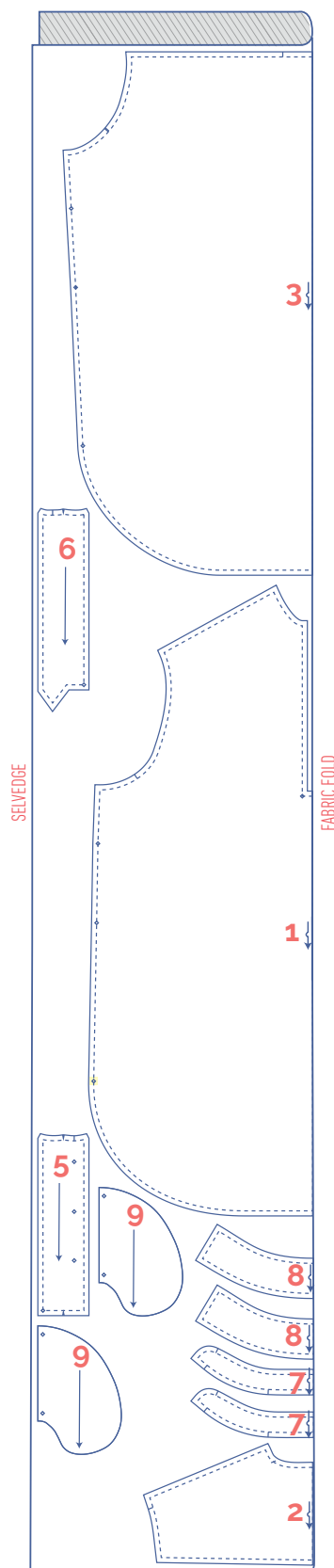
 material type
 fabric
 iron-on interfacing

fabric layout – solid fabrics
fabric width 110 cm

XS-M



L-XXXL



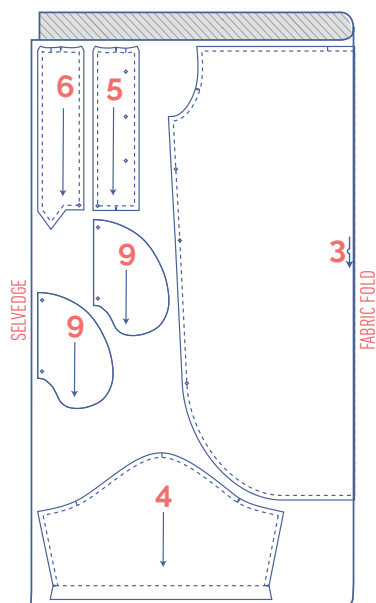
IMPORTANT

You only need pattern pieces 5 and 6 once.

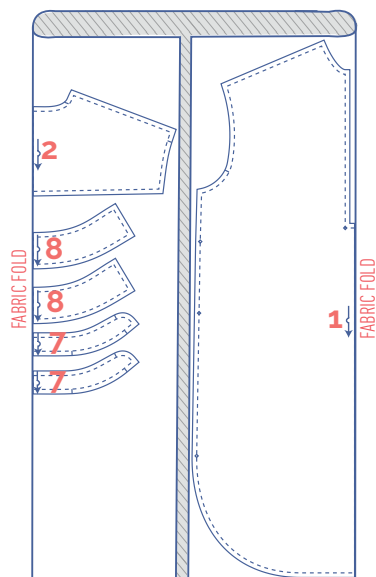
fabric layout – solid fabrics

fabric width 140 cm

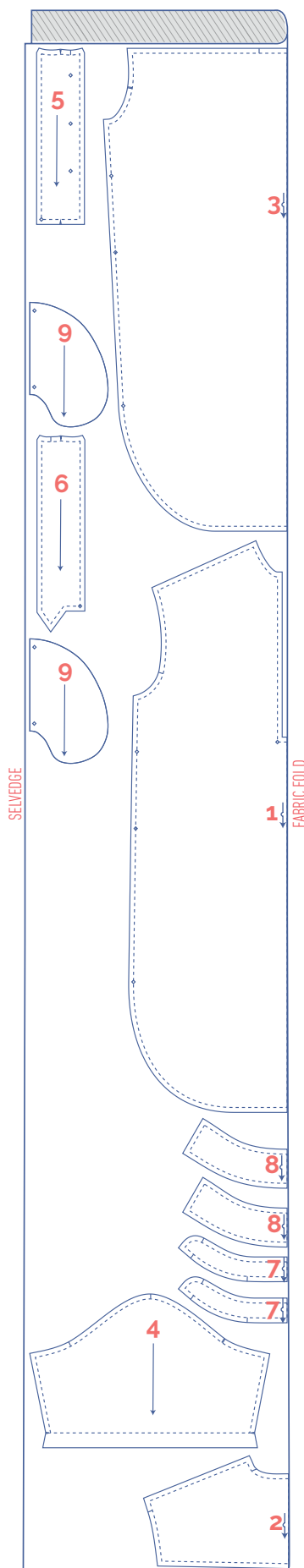
XS-L



+



XL-XXXL



marking pattern pieces



notch the pattern paper and fabric at the following points



single notch



double notch



V notch



mark the following points using marking thread



centre point



snap/button

sewing instructions



The method used to finish the seams depends on the fabric used.
The pieces are always sewn together with the right sides of the fabric facing together, unless stated otherwise.

F front

B back

RF right front 

LF left front 

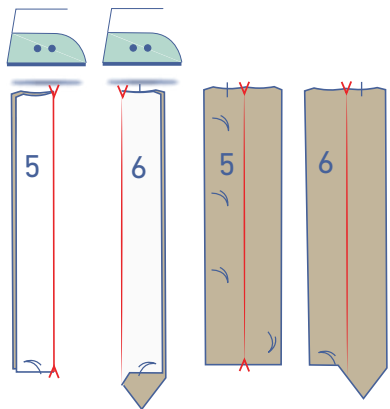
CF centre front

CB centre back

 right side

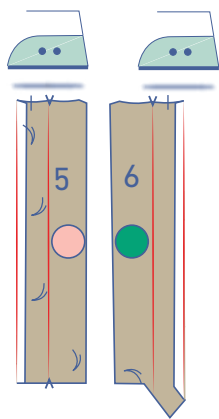
 wrong side

 iron-on interfacing

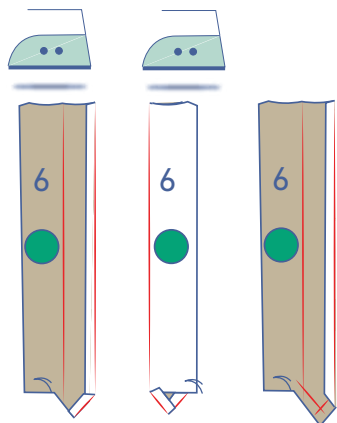


1

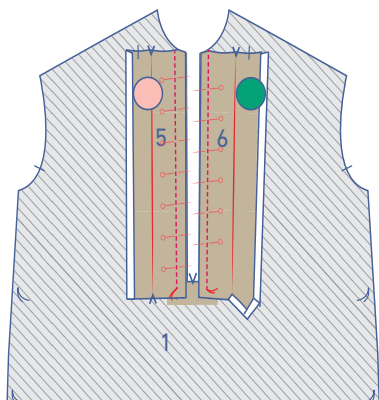
Press the LF polo placket (5) and RF polo placket (6). Start by pressing in half lengthwise with the wrong sides of the fabric touching. This will create a fold line. Open back out again.



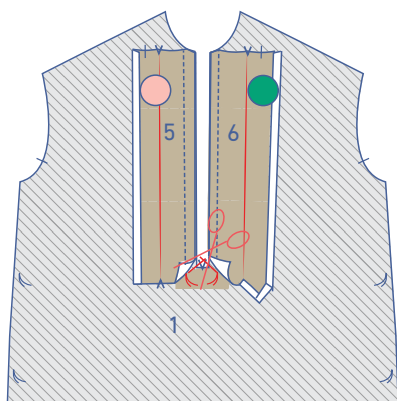
Press the long ends of each placket by 1 cm onto the wrong side as shown.



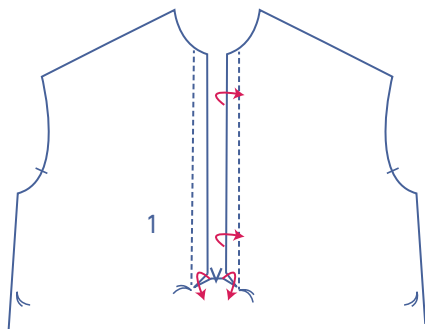
RF polo placket: press the slanted ends at the bottom 1 cm onto the wrong side. Neatly trim the excess seam out of the tip.



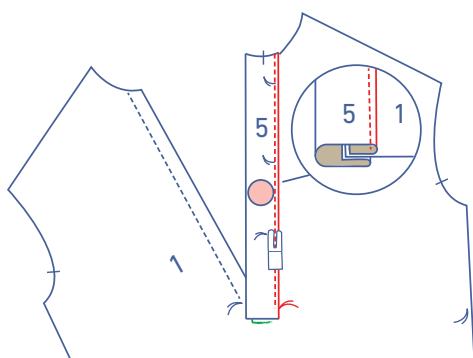
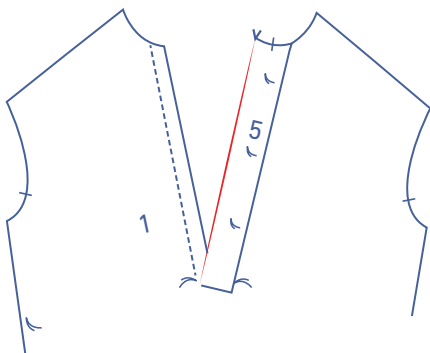
Place the front (1) with the wrong side facing up. Pin the unpressed raw edge of the polo plackets to the straight raw edges of the centre front. The right sides of the polo plackets should be touching the wrong side of the the front. Sew into place right up to the marking threads.



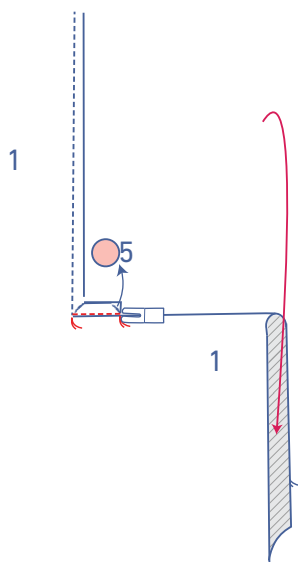
Turn your work over. Fold the bottom of the polo plackets out of the way and snip diagonally into the seam allowance of the front on either side until just before the marking threads.



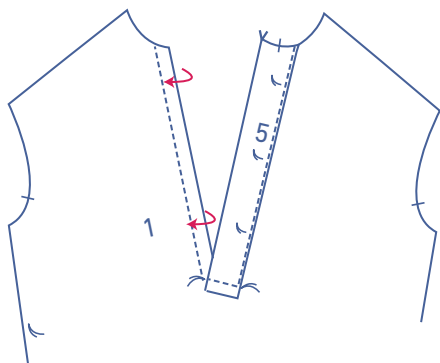
Fold the LF polo plackets towards the right side of the front along the pressed centre line.



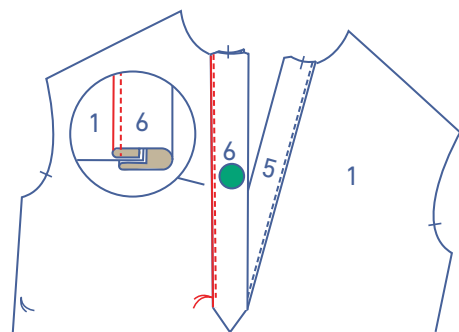
Tuck the fold line of the pressed seam allowance of the LF polo placket as shown so the edge of the placket sits neatly over the previous stitching. Sew into place right next to the edge up to the marking thread.



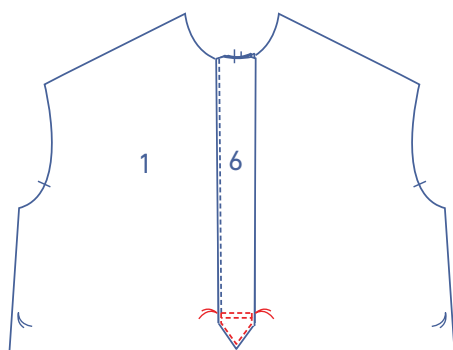
Fold the top of the front down and sew the bottom of the LF polo placket and the reinforcement triangle of the shaped seam allowance together at 1 cm. Sew the bottom, horizontal end of the polo closure's U shape. Remember: the seam allowance is on the right side of the front.



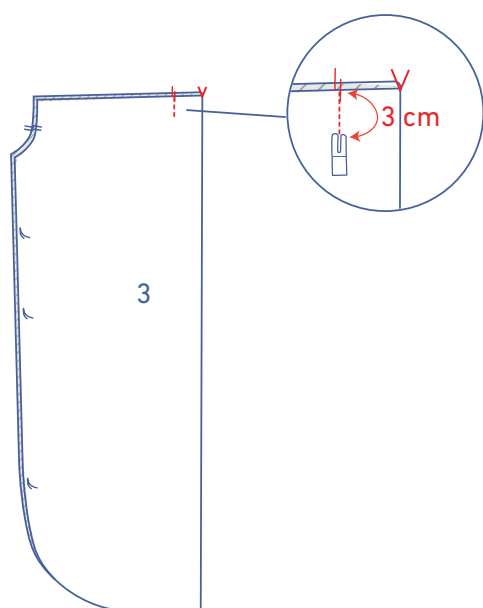
Fold the RF polo placket towards the right side of the front along the pressed centre line.



Place the fold line of the pressed seam allowance of the RF polo placket neatly over the previous stitching. Sew into place right next to the edge up to the marking thread.

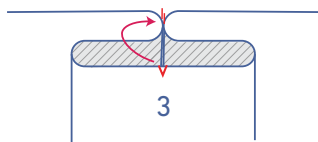


Now place the RF polo placket neatly over the LF polo placket. Pin the reinforcement triangle neatly into place at the bottom. Sew into place as shown in the illustration.

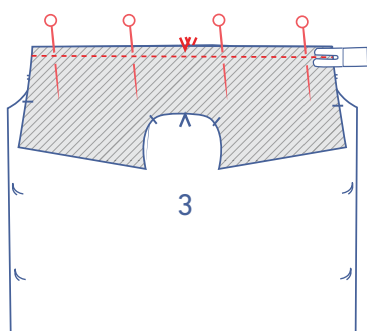
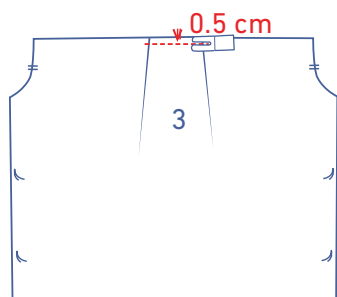


2

Match the single notches at the top of the back (3) with the wrong sides facing to create a pleat. Sew a 3-cm line to create a pleat.

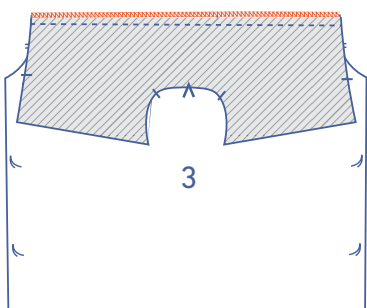


Press the pleat flat so that the V notch on the CB lines up evenly with the single notches. Sew the pleat at the top of the back (3) into place at 0.5 cm from the raw edge.

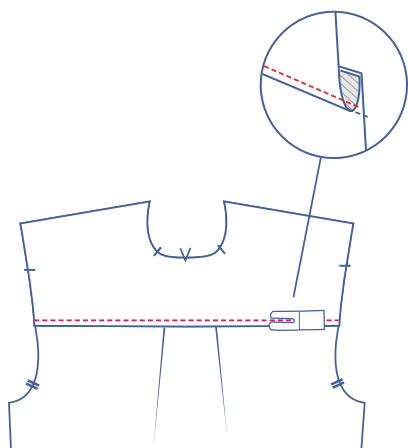


3

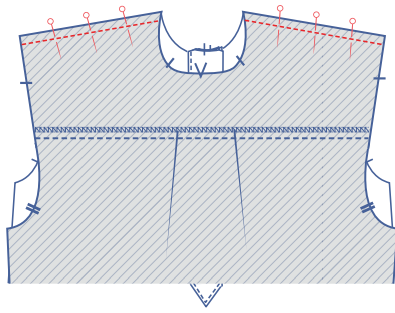
Pin and sew the straight end of the yoke (2) and top of the back piece (3) together with the V notches matching.



Finish the raw edges together with overlock stitching.

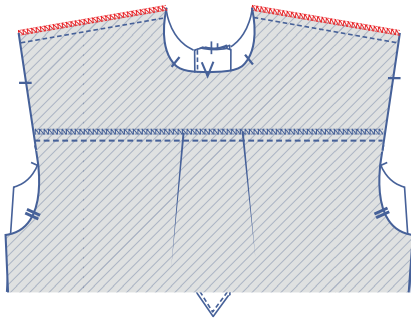


Press the seam allowance up and topstitch the yoke right next to the seam.

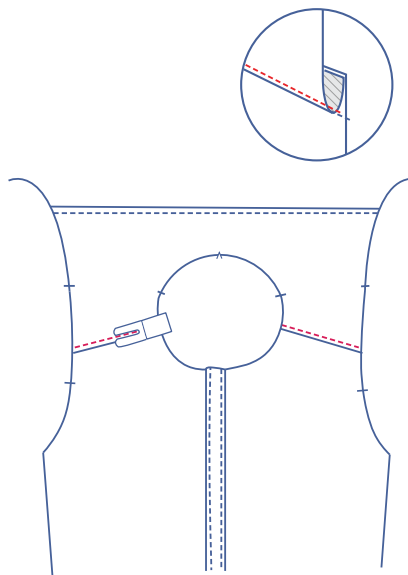


4

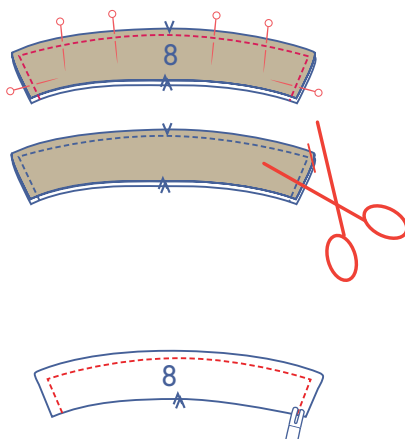
Pin and sew the shoulder seams together.



Finish the raw edges together with overlock stitching.



Press the seam allowance towards the back and topstitch the yoke right next to the seam.

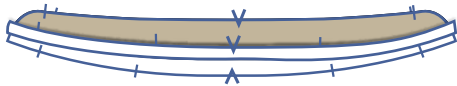
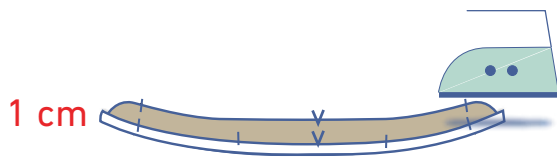


5

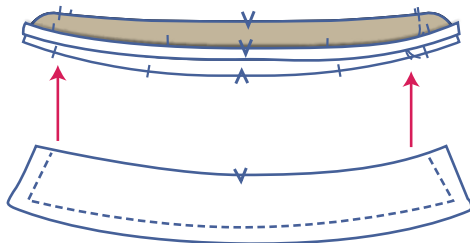
Pin and sew the contours of the collars (8) together, except for the bottoms. Trim the seam allowance from the corners. Turn the right way out and topstitch right next to the edge.



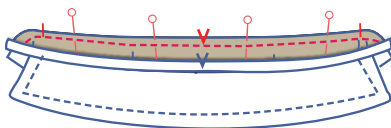
Press the bottom of 1 of the 2 collar bands (7) 1 cm onto the wrong side.



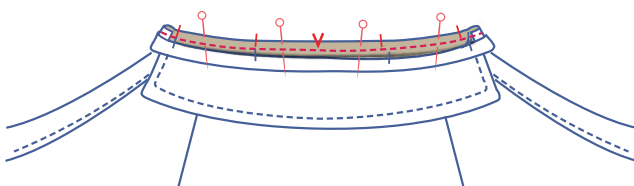
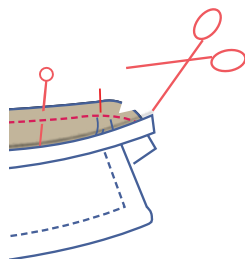
Stack both collar bands with the right sides facing together. The collar band with the pressed bottom should be on top.



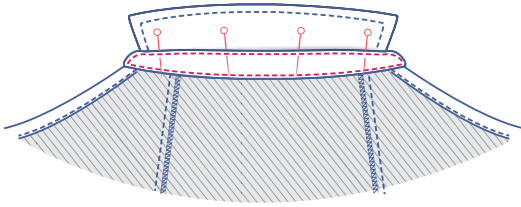
Slide the constructed collar (8) between the collar bands, making sure the raw edges are aligned.



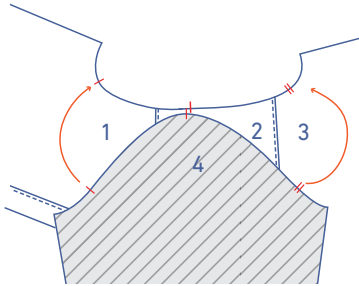
Pin and sew the pieces together. Trim the seam allowances at the curves to ensure the collar bands will lie flat later on. Now, turn the collar bands the right way out.



Pin and sew the bottom of the unpressed collar band to the neckline along the right side of the dress.

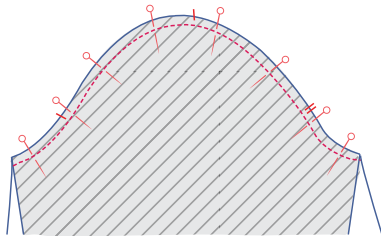


Fold the collar band with the pressed bottom onto the wrong side of the dress' neckline. The fold line should lie directly over the previous stitching. Pin and sew into place. Finish the stitching around the collar band.

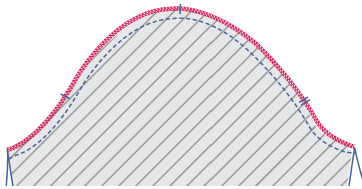


6

Pin and sew the sleeve cap (4) to the armhole, matching the notches. The single notch marks the front and the double notch marks the back. The single notch at the top of the sleeve matches the notch on the yoke marking the true shoulder.

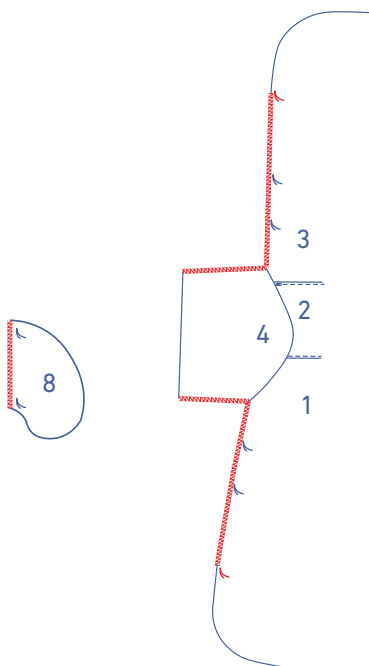


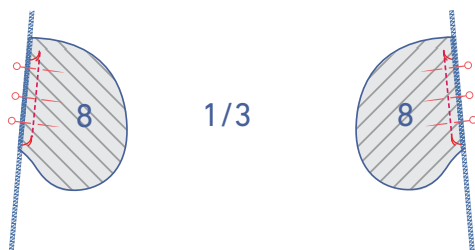
Finish the raw edges together with overlock stitching.



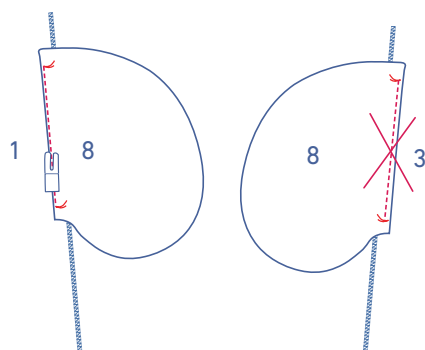
7

Finish the straight edge of the pocket (8), the underarm seams and the side seams of the front (1) and back (3) up to the marking threads near the bottom of the dress with overlock stitching.

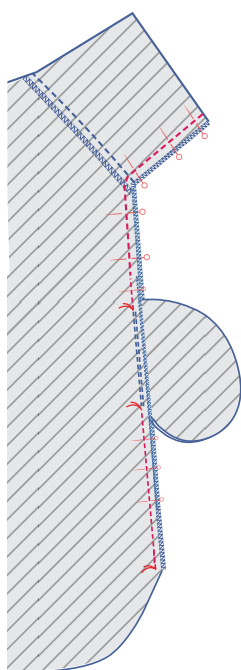




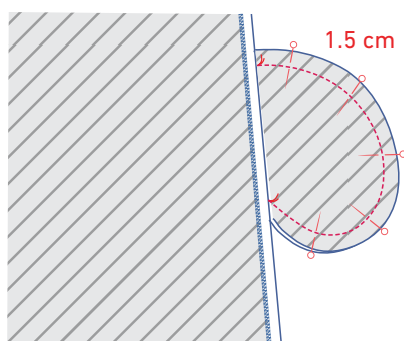
Pin the straight edge of the pocket to the side seam of the front and back with the marking threads matching. Sew into place between the marking threads.



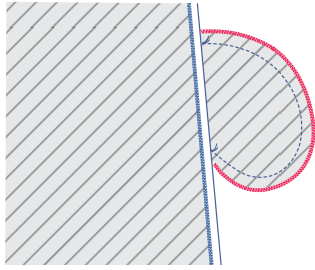
Flip the pocket over and sew between the marking threads through all layers of fabric (= the pocket + the underlying seam allowance of the front) right next to the seam. You'll omit this step for the back. Repeat for the pocket piece that is attached to the back piece.



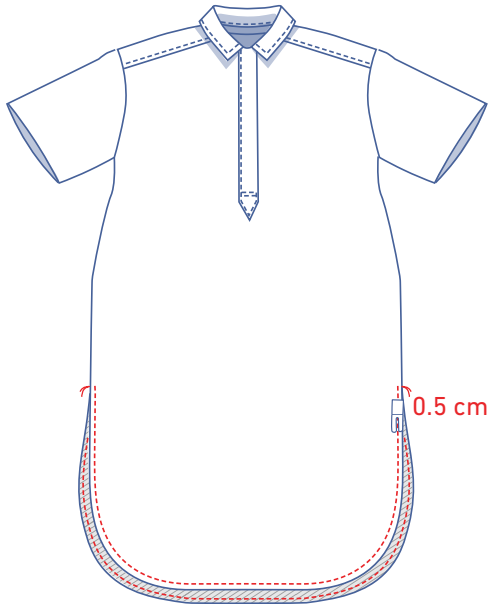
Pin the side and underarm seams into place. Sew right up to the marking thread above the pocket opening. Then sew from the marking thread under the pocket opening to the marking thread above the slit. Press the seam allowance open.



Pin both pocket pieces together and sew at 1.5 cm from the raw edges. Move the seam allowances of the front and back out of the way, so that you can sew up to the marking threads.

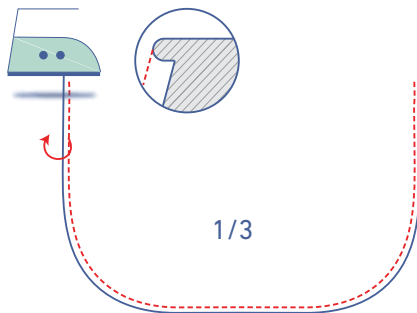


Finish the raw edges together with overlock stitching.

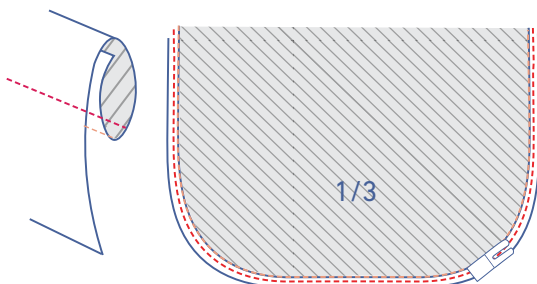


8

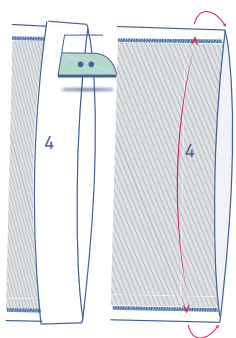
Sew the curved hem 0.5 cm from the raw edge.



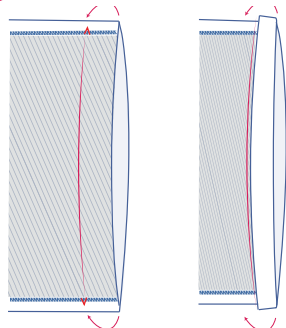
Press the edge onto the wrong side, using the stitch line you just sewed as the fold line.



Fold up again and sew into place right next to the folded edge.



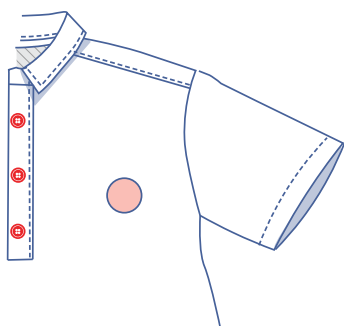
Press the hem allowance of the sleeve over at the V notches and open back out.



Match the raw edge to the pressed fold line and fold up again.

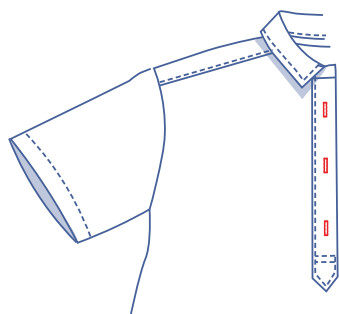


Sew into place next to the edge.



9

Sew the buttons onto the LF polo placket. The positions have been marked on the pattern.



Make vertical buttonholes on the RF polo placket based on the location of the buttons.



On the right end of the collar band, make a horizontal button hole halfway up at 1 cm from the finished edge. Sew a button on the left end of the collar band to match the buttonhole on the right.