

# Betsy by Fibre ⚡ood



# Betsy by Fibre ⚡ood



4 - 30

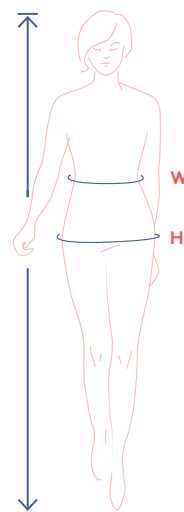
Looking for a pattern that's rewarding to make and to wear?  
Say hi to Betsy! This asymmetrical skirt has an elasticised waist and a high-low hem. It looks lovely in calf-length, but other lengths work nicely too. Find out how to alter the length in a flash [here](#). Betsy looks great in nearly any fabric. Fancy adding a sweet detail or two? Make two vertical buttonholes in the waistband and thread a pretty, contrasting ribbon or cord through to make a bow. Go casual or join the party...  
Betsy is always prepared.



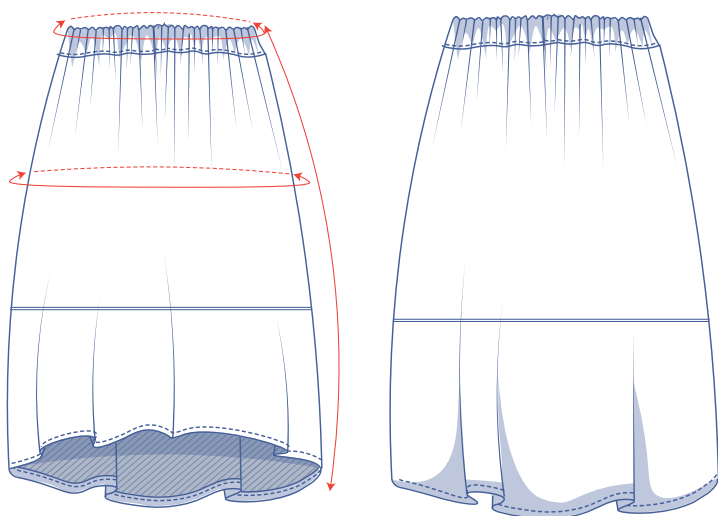
## size chart (in cm)

| size        | 4   | 6   | 8   | 10  | 12  | 14  | 16  | 18  | 20   | 22  | 24    | 26  | 28    | 30  |
|-------------|-----|-----|-----|-----|-----|-----|-----|-----|------|-----|-------|-----|-------|-----|
| body height | 160 | 164 | 166 | 167 | 168 | 169 | 170 | 171 | 172  | 172 | 172   | 172 | 172   | 172 |
| W (waist)   | 66  | 68  | 70  | 74  | 78  | 82  | 84  | 88  | 94.5 | 101 | 107.5 | 114 | 120.5 | 127 |
| H (hip)     | 86  | 90  | 94  | 97  | 100 | 103 | 106 | 109 | 115  | 120 | 125   | 130 | 135   | 140 |

Choose your size based on your hip measurement. Pick the size that is the best match for your hips. Altering the waistline is simple. Just adjust the length of the elastic!



## finished garment measurements (in cm)



— shorten or lengthen the pattern here

This chart's measurements are the pattern measurements based on the used fabric type and serve as a reference. Ease has been added to the width measurements (in addition to the exact body measurements) for a more comfortable fit. Betsy is designed to have a looser cut. Depending on the preferred cut, you could possibly go a size smaller or larger than the size chosen.

| size                  | 4     | 6     | 8     | 10    | 12    | 14    | 16    | 18    | 20    | 22    | 24    | 26    | 28    | 30    |
|-----------------------|-------|-------|-------|-------|-------|-------|-------|-------|-------|-------|-------|-------|-------|-------|
| side length*          | 83.75 | 84    | 84.25 | 84.5  | 85    | 85.25 | 85.5  | 85.75 | 87    | 87.25 | 87.75 | 88    | 88.25 | 88.5  |
| waist with elastic    | 62    | 64    | 66    | 70    | 74    | 78    | 80    | 84    | 90.5  | 97    | 103.5 | 110   | 116.5 | 123   |
| waist without elastic | 94    | 96    | 98    | 102   | 106   | 110   | 112   | 116   | 122.5 | 129   | 135.5 | 142   | 148.5 | 155   |
| hips                  | 110.5 | 112.5 | 114.5 | 118.5 | 122.5 | 126.5 | 128.5 | 132.5 | 139   | 145.5 | 152   | 158.5 | 165   | 171.5 |

\* Including the waistband.

Compare the stated lengths to the measured or desired lengths. **Lengthen** or **shorten** the skirt by cutting the pattern pieces at the indicated double lines. Then either increase the distance between the cut pieces by the desired amount (to lengthen), or overlap the pieces (to shorten). Make sure that the CF and CB lines and the side seams are always straight.



## IMPORTANT

The amount of fabric used may change based on the alterations.

## supplies



- Thread
- Elastic band (width 4 cm): see table
- Fabric: see table

| elastic band |    | 4  | 6  | 8  | 10 | 12 | 14 | 16 | 18 | 20   | 22  | 24    | 26  | 28    | 30  |
|--------------|----|----|----|----|----|----|----|----|----|------|-----|-------|-----|-------|-----|
| length       | cm | 65 | 67 | 69 | 73 | 77 | 81 | 83 | 87 | 93.5 | 100 | 106.5 | 113 | 119.5 | 126 |

| fabric              |    | 4   | 6   | 8   | 10  | 12  | 14  | 16  | 18  | 20  | 22  | 24  | 26  | 28  | 30  |
|---------------------|----|-----|-----|-----|-----|-----|-----|-----|-----|-----|-----|-----|-----|-----|-----|
| fabric width 110 cm | cm | 175 | 175 | 180 | 180 | 180 | 205 | 215 | 220 | 240 | 260 | 275 | 295 | 310 | 325 |
| fabric width 140 cm | cm | 175 | 175 | 180 | 180 | 180 | 180 | 180 | 180 | 185 | 185 | 185 | 185 | 185 | 185 |

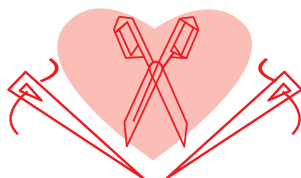
The corresponding fabric layout can be found on page 6 of these sewing instructions.

## fabric advice



You can make the Betsy skirt in just about any fabric, whether woven or knit, in a colour or a print. The sky's the limit, so you can dream about linen, polyester or viscose crepe, festive satin, fine cotton, double gauze, jersey in cotton or viscose, leather or suede jersey... The list just goes on!

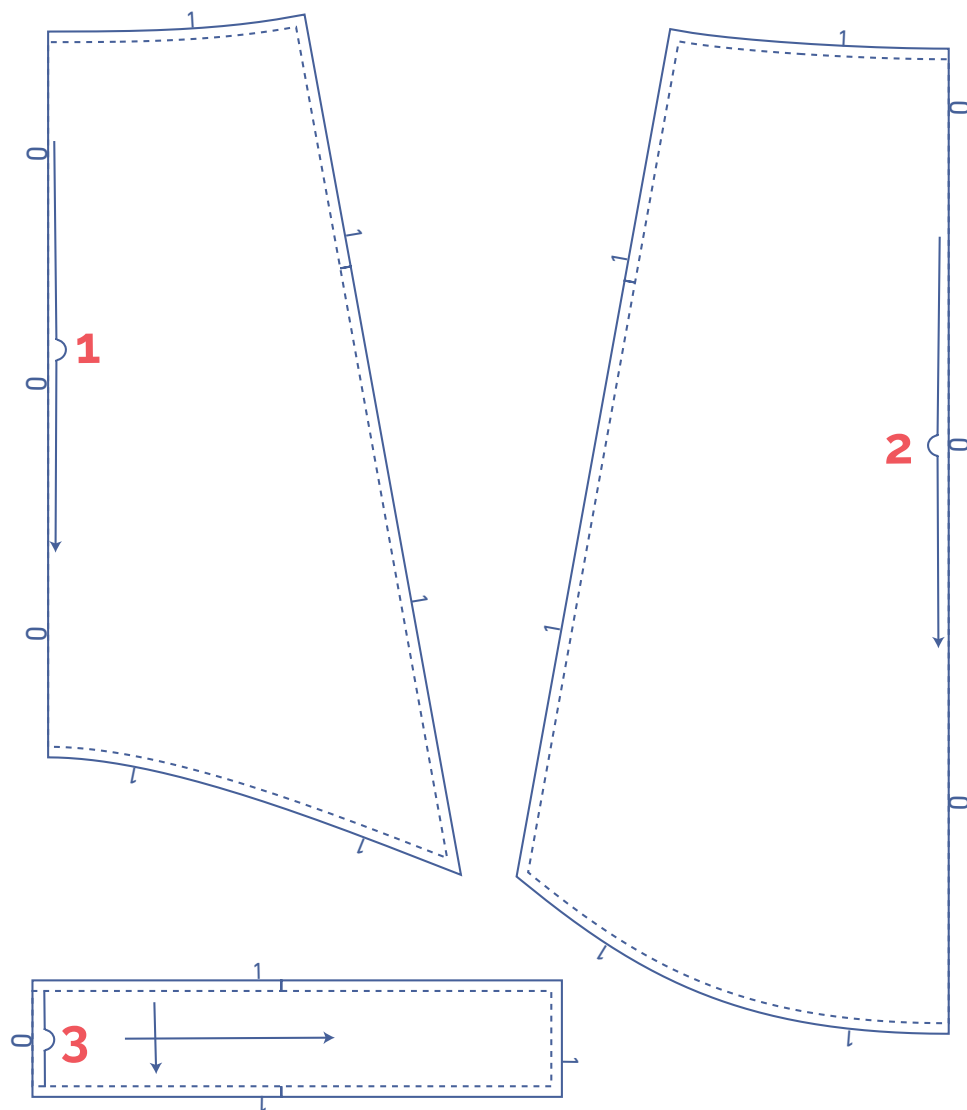
# Proud to be #Sewista



## pattern pieces & seam allowances (in cm)

To sew the garment as described in the instructions, you must draw the illustrated seam allowances around the paper pattern pieces before cutting them out. If you are using a pdf version of the pattern, you may print it with or without seam allowances. If you print with seam allowances, the solid lines denote the cutting lines, and dashed lines denote the stitch lines. Check out the [video](#).

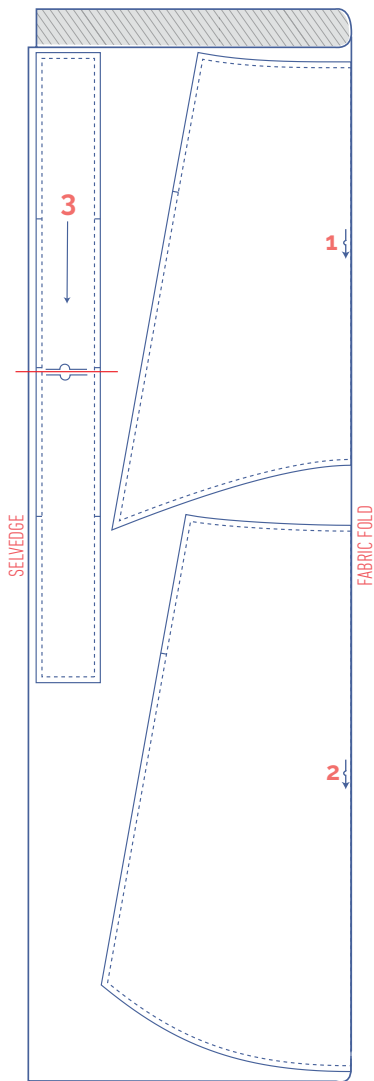
1. front: 1x on fabric fold
2. back: 1x on fabric fold
3. waistband: 1x on fabric fold



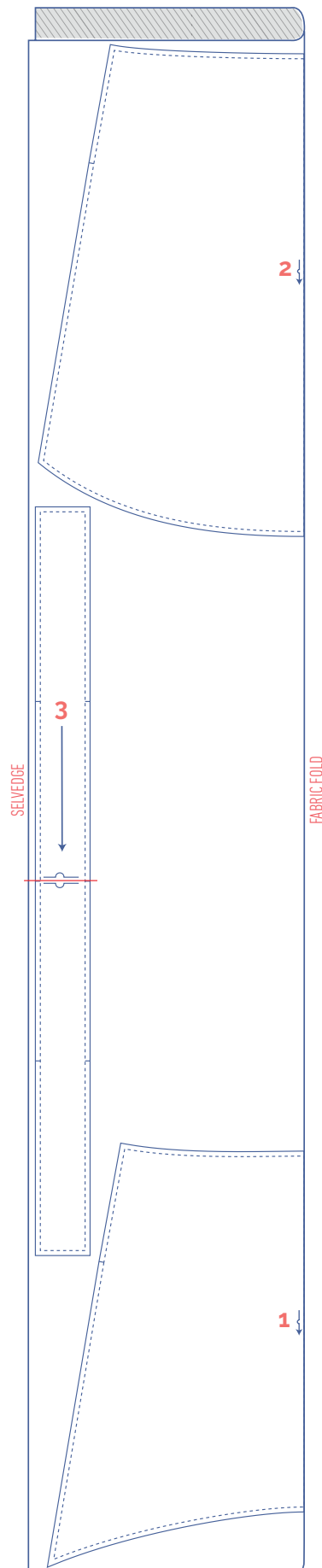
|   |               |
|---|---------------|
|  | material type |
| <input type="checkbox"/>  | fabric        |

**fabric layout – solid fabrics**  
**fabric width 110 cm**

**4 - 12**



**14 - 30**



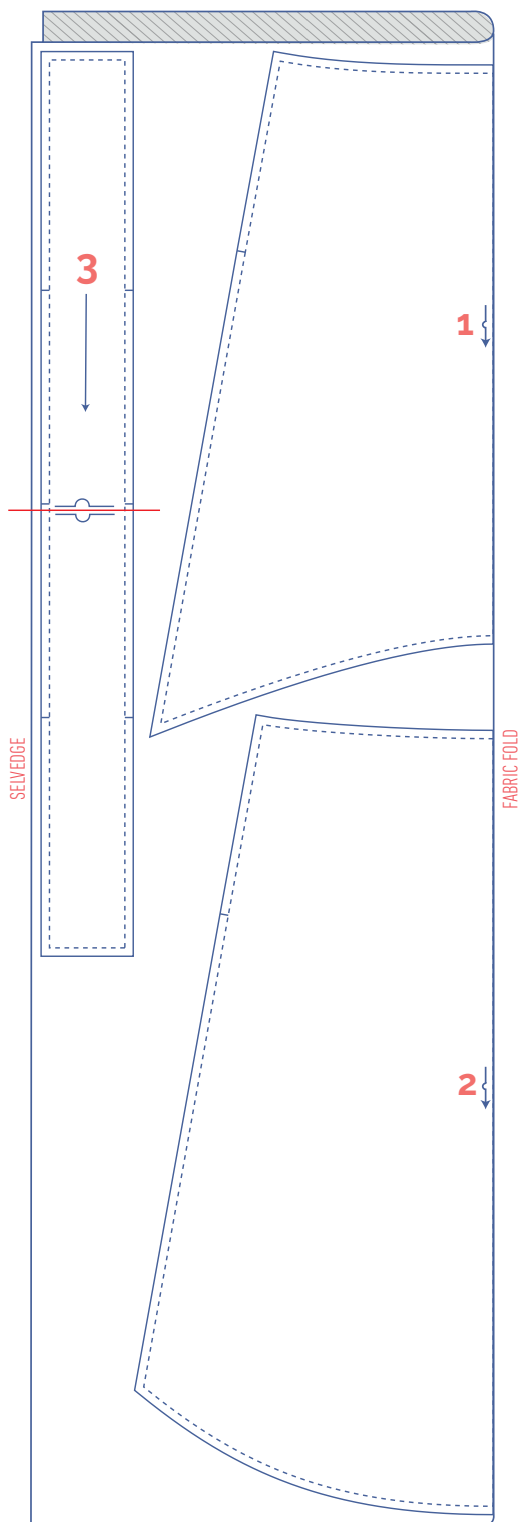
**IMPORTANT**

You only need pattern piece 3 once.

## fabric layout – solid fabrics

fabric width 140 cm

4 - 30



### IMPORTANT

You only need pattern piece 3 once.

### marking pattern pieces



notch the pattern paper and fabric at the following points



single notch



V notch

# sewing instructions



The method used to finish sewing the garment depends on the fabric used. The pieces are always sewn together with the right sides of the fabric facing together, unless stated otherwise.

F front

B back



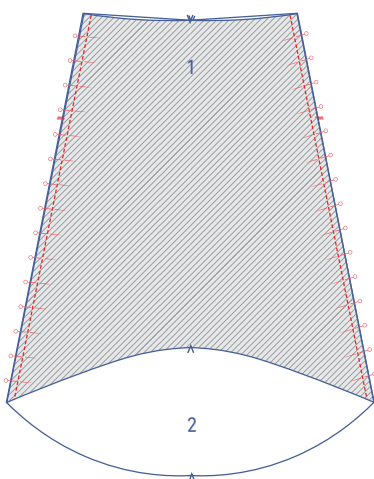
right side



wrong side



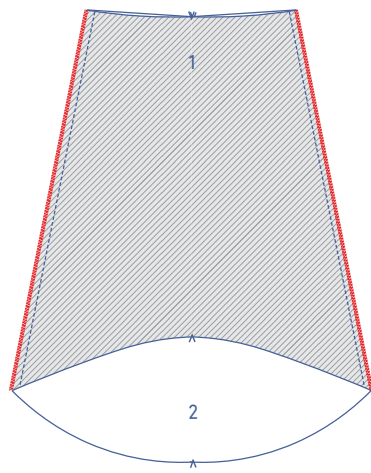
elastic band



**1**

Pin and sew the side seams of the front (1) and back (2) together.



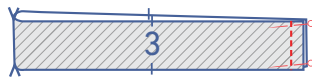
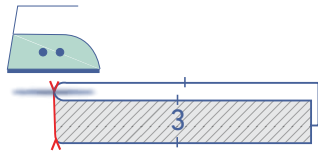


Finish the raw edges together with overlock stitching.

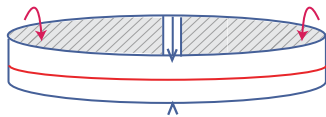


## 2

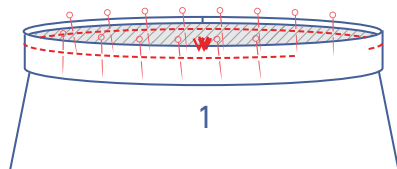
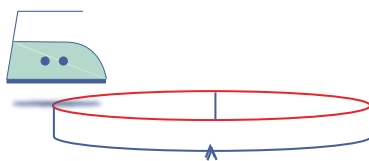
Fold the waistband (3) in half crosswise with the right sides of the fabric touching.



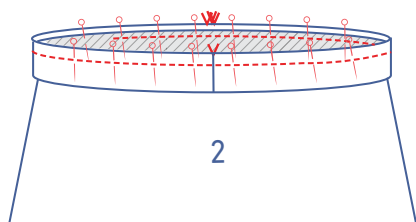
Pin and sew the short ends together.

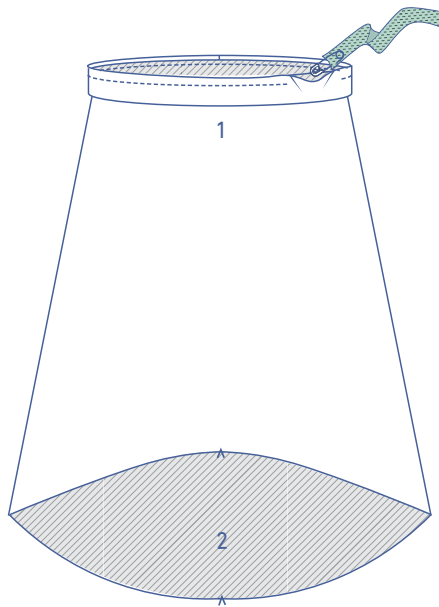


Press the waistband in half lengthwise with the wrong sides of the fabric touching.

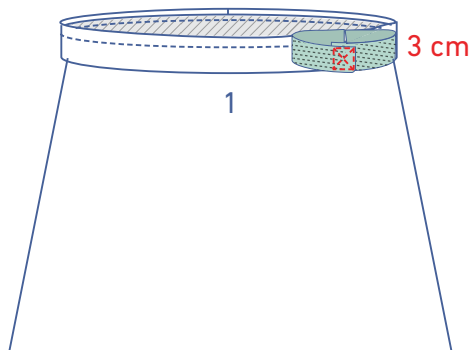


Slide the waistband over the top of the skirt, aligning the raw edges. The seam of the waistband should be at the CB notch. Match the other notches. Pin and sew. Leave an opening in the waistband so that you can thread the elastic through.

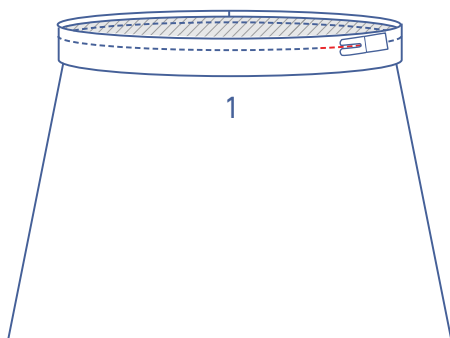




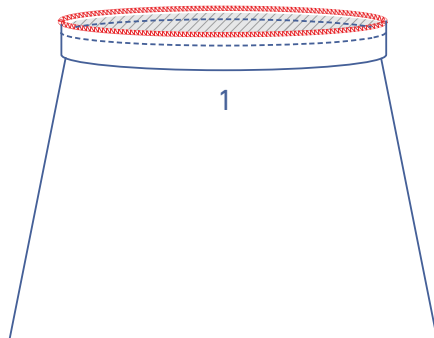
Thread the elastic through the waistband.



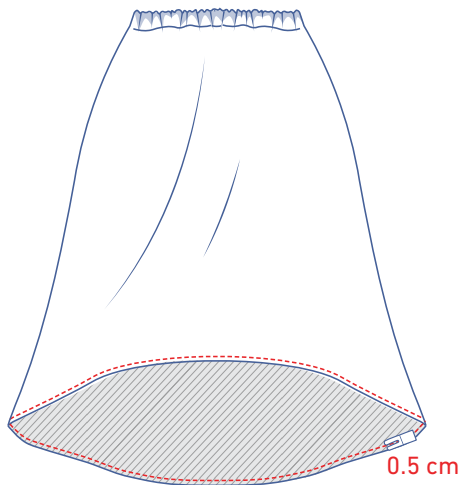
Overlap the ends of the elastic by 3 cm and sew into place with a Box X stitch.



Tuck the elastic back neatly into the waistband's casing and sew the opening closed.

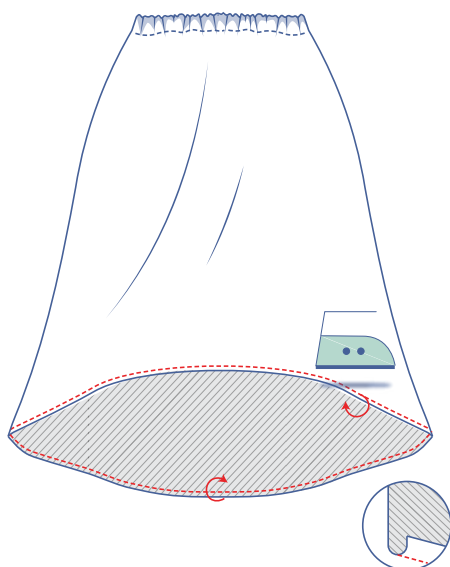


Finish the raw edges together with overlock stitching.

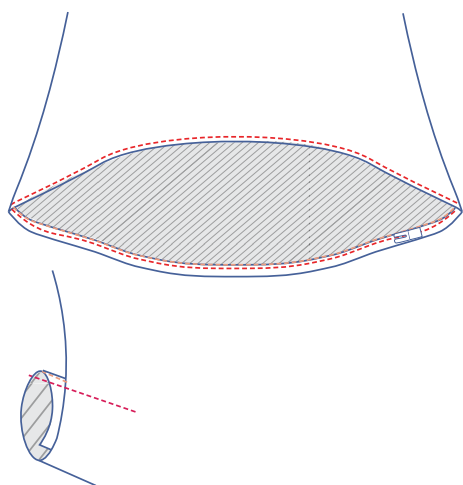


### 3

Sew around the bottom of the skirt 0.5 cm from the raw edge.



Fold the hem to the wrong side at the stitch line you just made. Press.



Fold up again and sew into place right next to the folded edge.