

# Agatha by Fibre ⚡ood



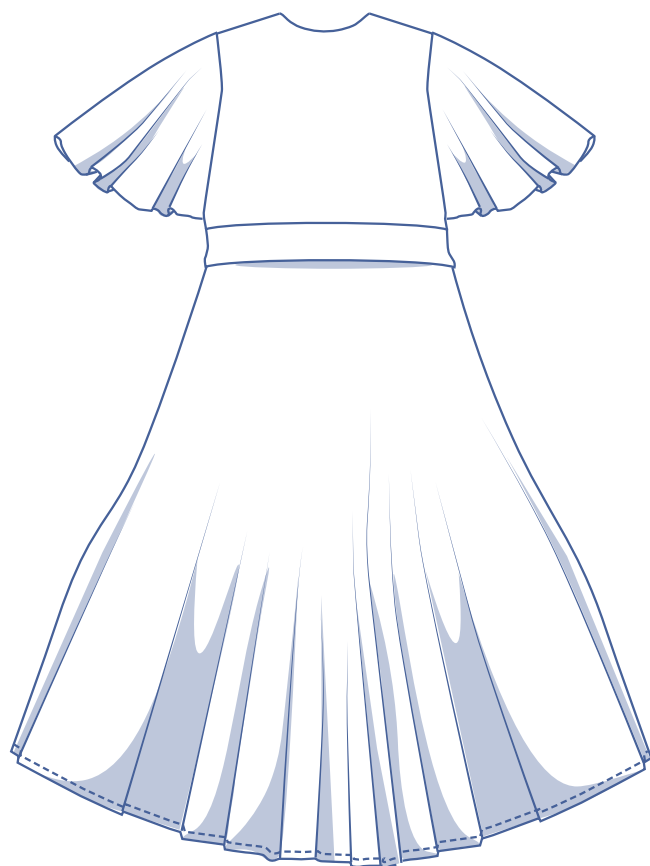
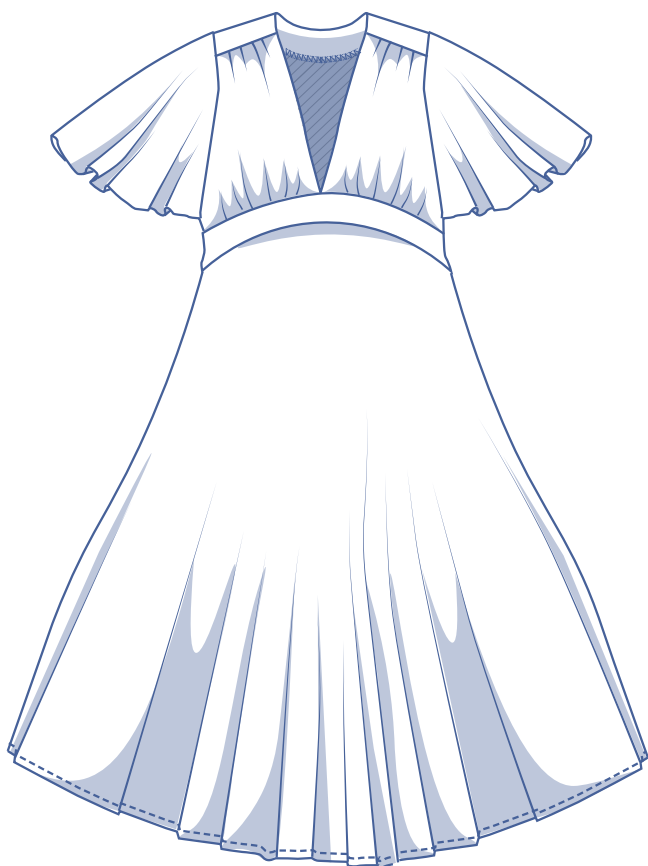
# Agatha by Fibre ood

\*\*\*



4 - 30

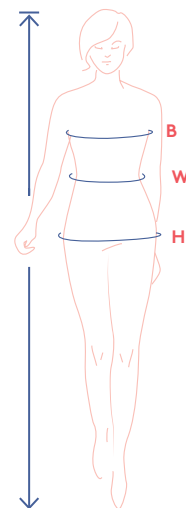
Spread your butterfly wings in the Agatha. This romantic dress has everything going for it with its fluttery sleeves, an empire waist, and an elegant fanned circle skirt with hidden side seam pockets. Your décolleté gets the attention it deserves thanks to the high waistband, gathered top and deep V-neck. Feel like it's a bit too much of a good thing? Just throw on a tank top or bikini top underneath. You could also slightly overlap the top pieces. Either way, it's time to roll out the red carpet because you're sure to be the star of the show in this dress!



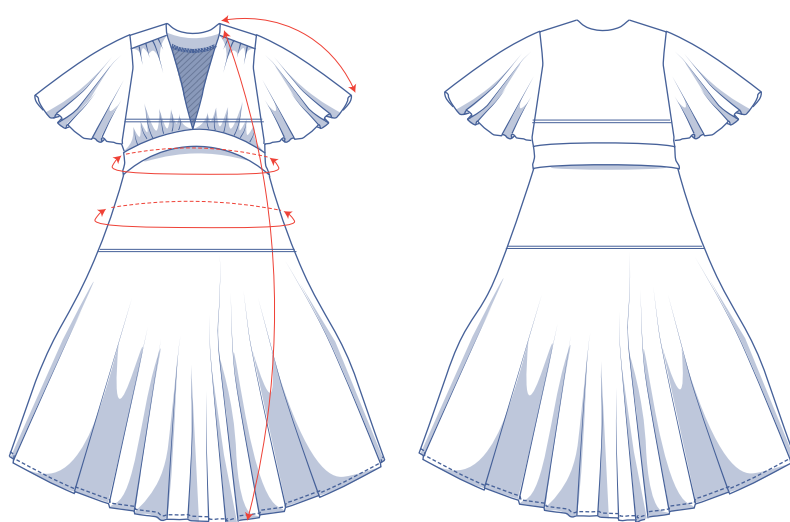
## size chart (in cm)

size	4	6	8	10	12	14	16	18	20	22	24	26	28	30
body height	160	164	166	167	168	169	170	171	172	172	172	172	172	172
B (bust)	76	80	84	88	92	96	100	104	110	116	122	128	134	140
W (waist)	66	68	70	74	78	82	84	88	94.5	101	107.5	114	120.5	127
H (hip)	86	90	94	97	100	103	106	109	115	120	125	130	135	140

Choose your size based on your bust measurement. If your waist and hip measurements are wider than those in the size chart, check the waist and hip measurements in the chart below to see if there's enough room or whether the pattern needs to be altered. It's easy to do. Simply trace the line of the chosen waist and hip size at those points and blend the lines.



## finished garment measurements (in cm)



— shorten or lengthen the pattern here

These are the pattern measurements based on the used fabric type and serve as a reference. Ease has been added to the width measurements (on top of the exact body measurements) for a more comfortable fit. Agatha is designed to be fitted at the bust and looser around the hips. Depending on the preferred cut, you could possibly go a size smaller or larger.

Compare the stated lengths to the measured or desired lengths. **Lengthen** or **shorten** the dress and/or the sleeves by cutting the pattern pieces at the indicated double lines. Then either increase the distance between the cut pieces by the desired amount (to lengthen) or overlap the pieces (to shorten). Make sure that the CF and CB lines and the side seams are always straight.

size	4	6	8	10	12	14	16	18	20	22	24	26	28	30
length	108.5	109	109.75	110.25	110.75	111.25	113.75	114.5	118.25	119	119.75	120.5	121.5	122.25
sleeve length*	35	35.5	36.25	37	37.5	38.25	39	39.5	42	42.75	43.5	44.25	45	45.75
waistline measurement**	66.75	68.75	70.75	74.75	78.75	82.75	84.75	88.75	95.25	101.75	108.25	114.75	121.25	127.75
hips	130.75	132.75	134.5	138	141.5	145.25	147	150.5	156.5	162.25	168	173.75	179.75	185.5

\* Including the shoulder length.

\*\* This is the measurement just under the bustline.

### IMPORTANT

The amount of fabric used may change based on the alterations.



## supplies



- Thread
- Iron-on interfacing: max. 15 cm
- Fabric: see table

fabric		4	6	8	10	12	14	16	18	20	22	24	26	28	30
fabric width 110 cm	cm	370	375	375	385	390	400	415	425	465	475	480	490	500	515
fabric width 140 cm	cm	320	325	325	330	340	350	360	370	390	400	410	420	435	450

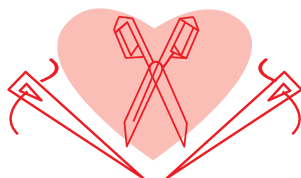
The corresponding fabric layout can be found on page 6 of these sewing instructions.

## fabric advice



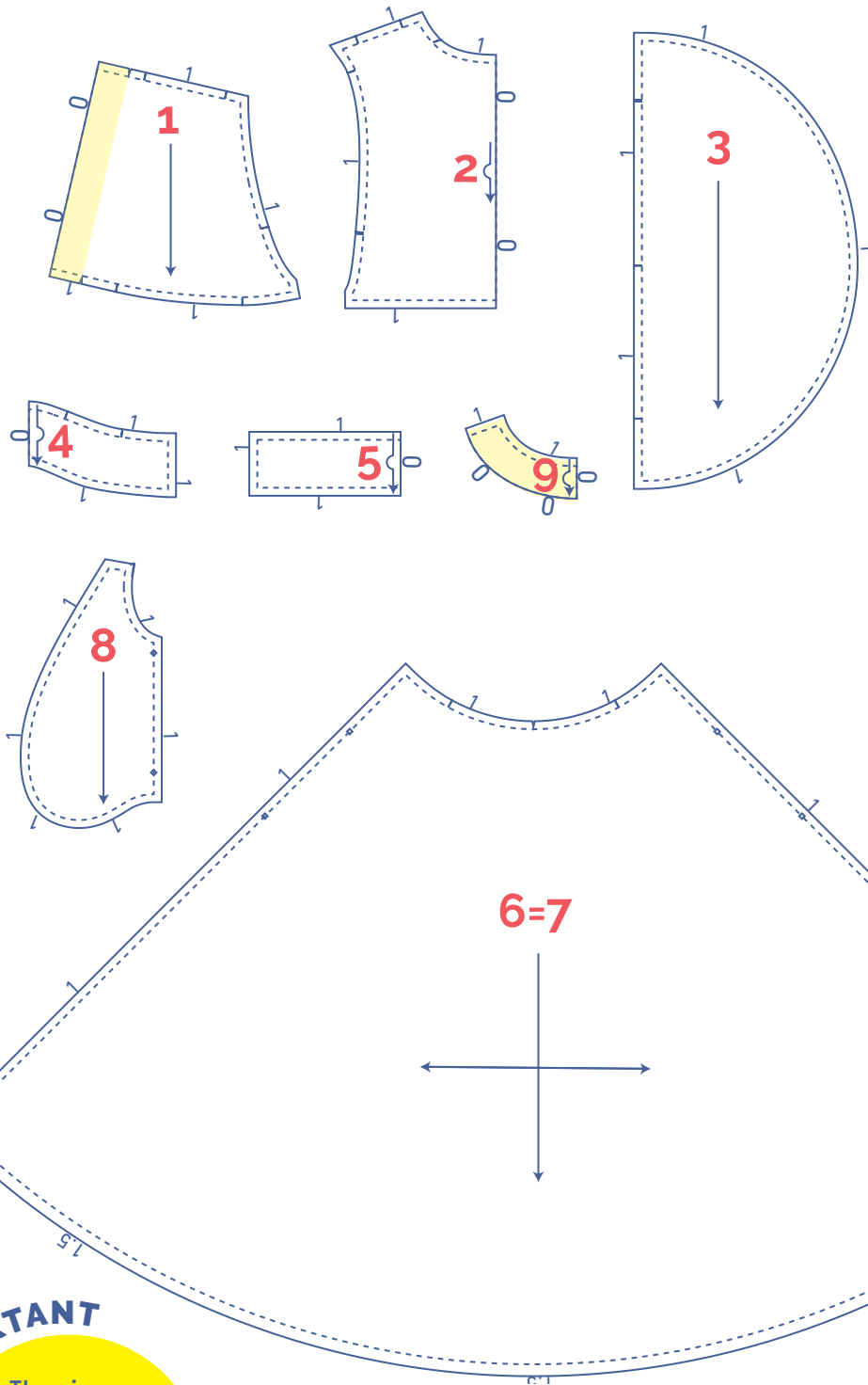
The sewing instructions for Agatha are made with jersey fabric in mind. Woven fabric is an option too, as long as you insert an invisible zip in the side seam. Avoid fabrics that are too bulky or heavy because they won't drape nicely.

# Proud to be #Sewista



## pattern pieces & seam allowances (in cm)

To sew the garment as described in the instructions, you must draw the illustrated seam allowances around the paper pattern pieces before cutting them out. If you are using a pdf version of the pattern, you may print it with or without seam allowances. If you print with seam allowances, the solid lines denote the cutting lines, and dashed lines denote the stitch lines. Check out the [video](#).



1. top front piece: 2x
2. top back piece: 1x on fabric fold
3. sleeve: 2x
4. waistband front: 2x on fabric fold
5. waistband back: 2x on fabric fold
6. skirt front: 1x
7. skirt back: 1x
8. pocket: 4x
9. facing back: 1x on fabric fold

### IMPORTANT

Pattern pieces 6 and 7 are the same pattern pieces.

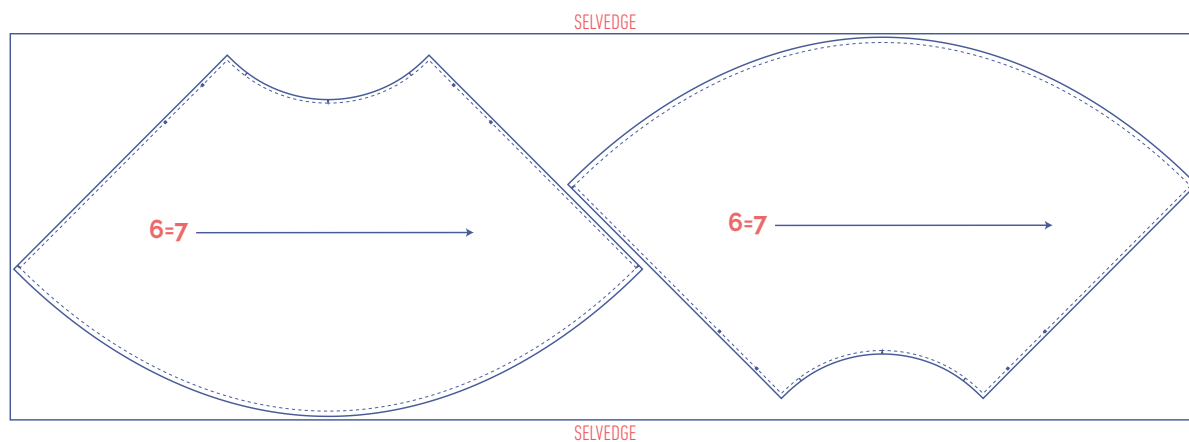
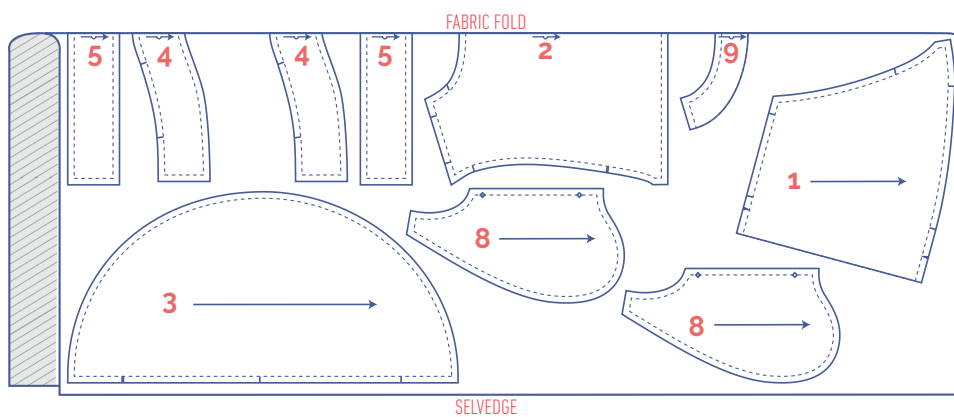
### IMPORTANT

The pieces highlighted in light yellow have iron-on interfacing attached to the wrong side.

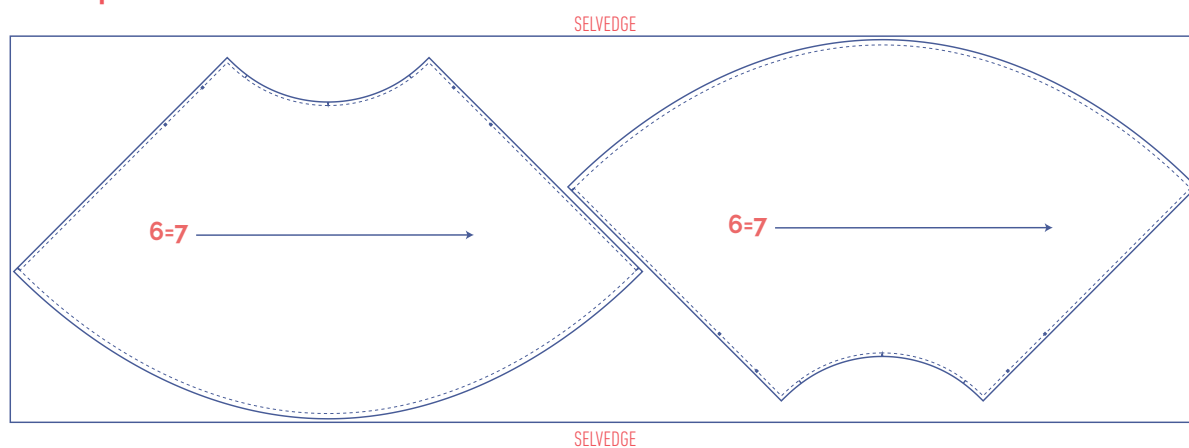
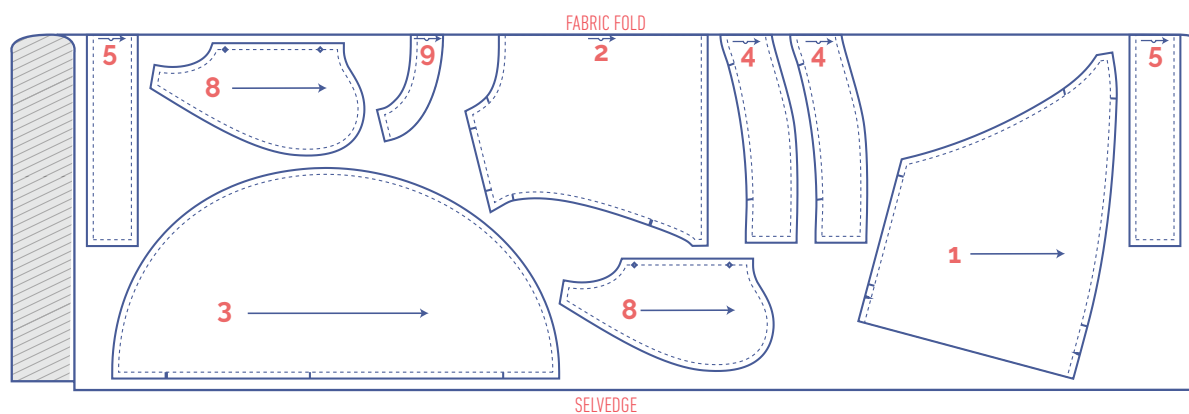
?	material type
	fabric
	iron-on interfacing

**fabric layout – solid fabrics**  
**fabric width 110 cm**

**4 - 18**



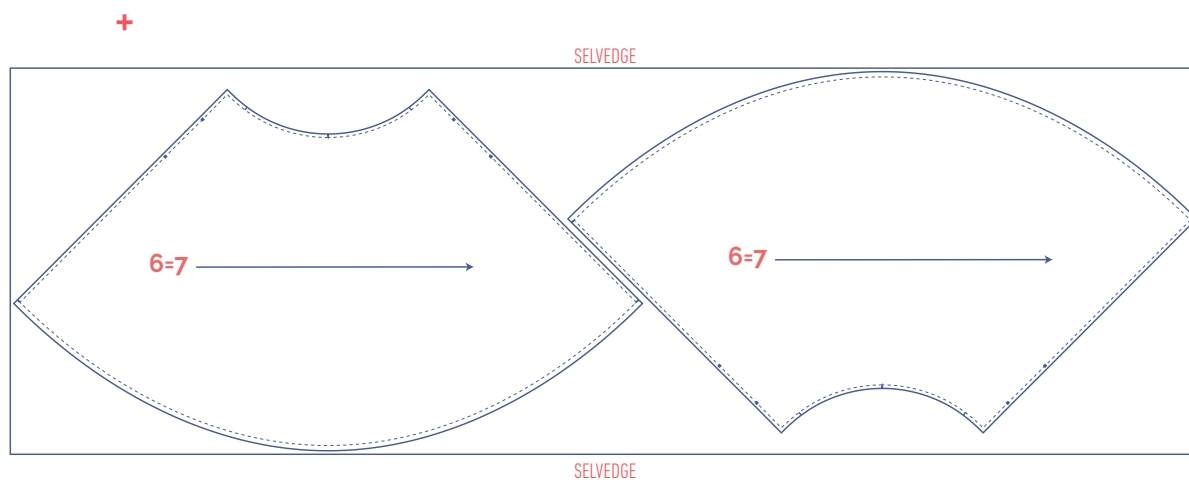
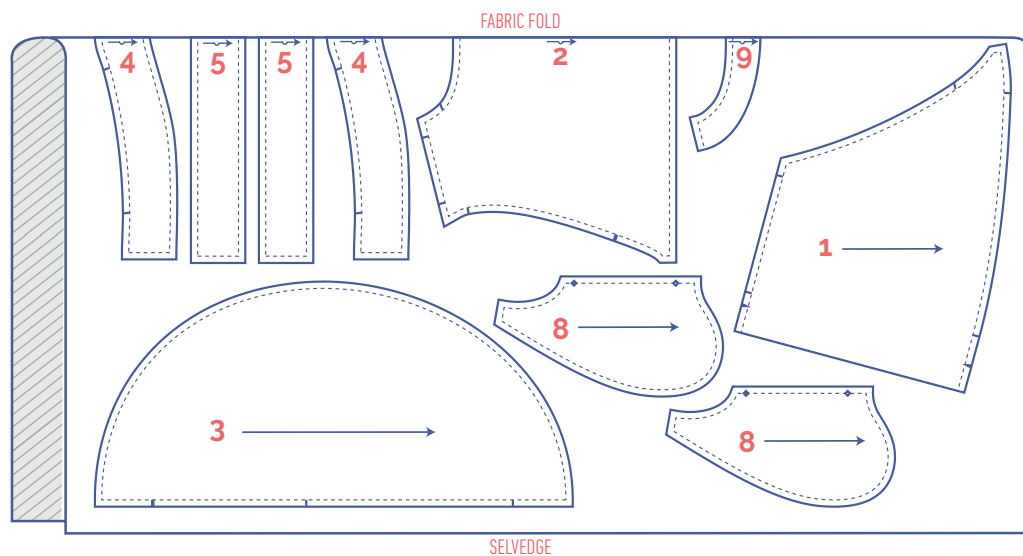
**20 - 30**



## fabric layout – solid fabrics

fabric width 140 cm

4 - 30



## marking pattern pieces

	notch the pattern paper and fabric at the following points
	single notch
	double notch
V	V notch

	mark the following points using marking thread
	centre point

# sewing instructions



The method used to finish sewing the garment depends on the fabric used. The pieces are always sewn together with the right sides of the fabric facing together, unless stated otherwise.

F front

B back

CF centre front

CB centre back



right side



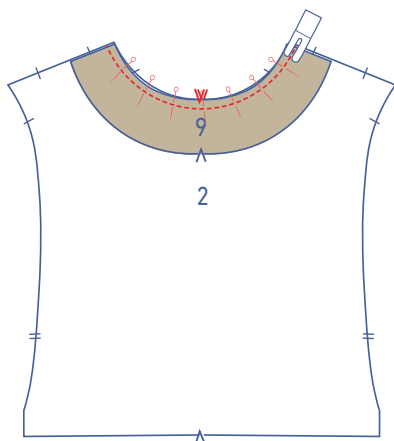
wrong side



iron-on interfacing

## NOTE

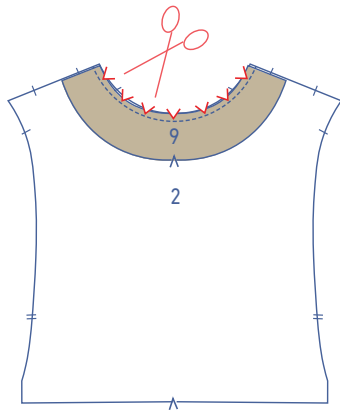
When sewing jersey, use a stretch stitch or overlock (4-threads).



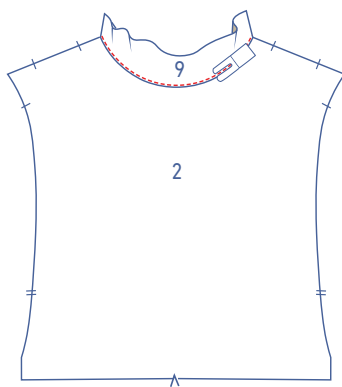
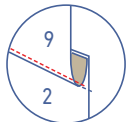
**1**

Pin and sew the neckline of the top back (2) and back facing (9) together.

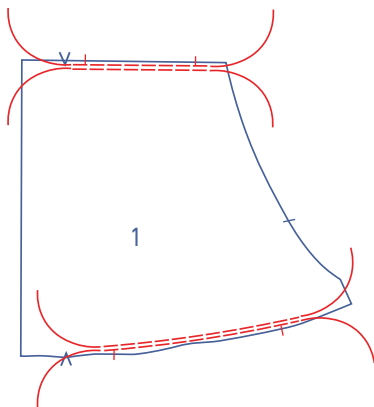




Snip into the seam allowance of the neckline to create a nice curve.

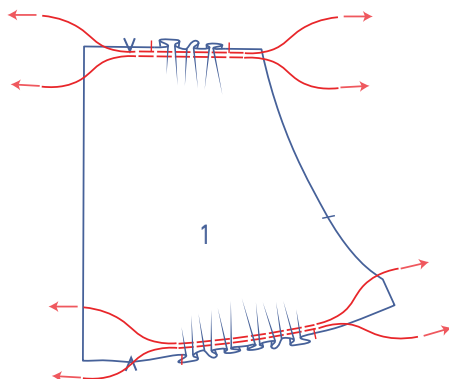


Fold the facing and the underlying seam allowance up. Sew the facing through all layers, right next to the seam.

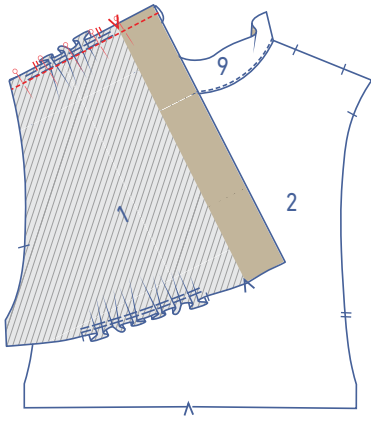


## 2

Sew 2 parallel rows of stitching at the top and bottom of the top front (1) using a long stitch length at a low thread tension. Always sew just slightly past the notches. Leave a length of thread at the start and end of the rows.

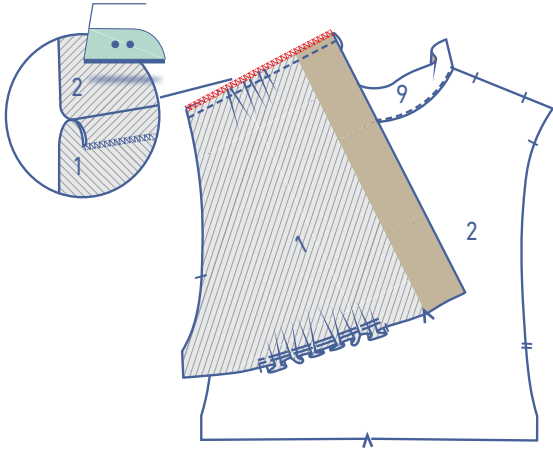


Carefully tug the ends of the threads to gather the fabric into ruffles.

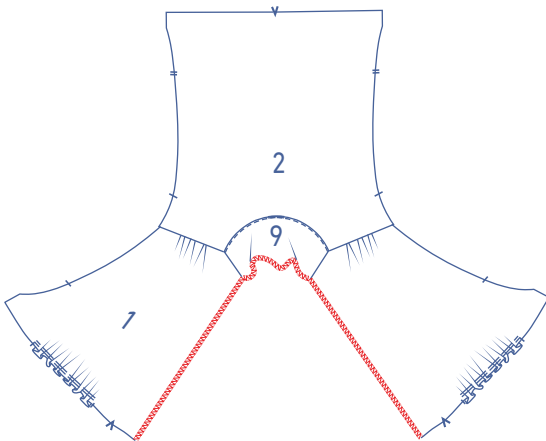


### 3

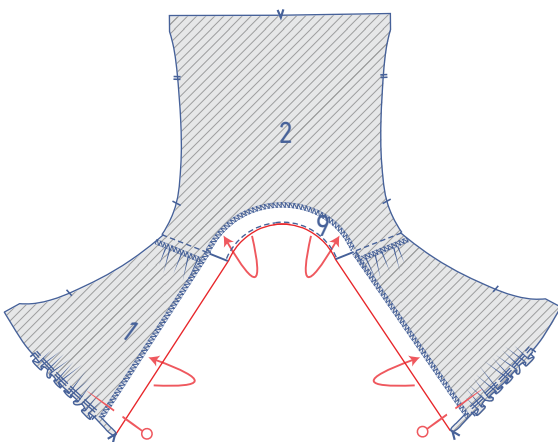
Pin and sew the top of the top front to the top of the top back (2). Remember: the back facing should still be folded up. Distribute until the ruffles and notches on both sides are matching. Sew into place.



Finish the raw edges together with overlock stitching. Press the seam allowance towards the front.

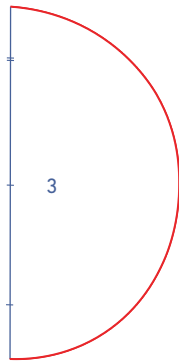


Finish the bottom of the back facing and the interfaced side of the front together in one line with overlock stitching.

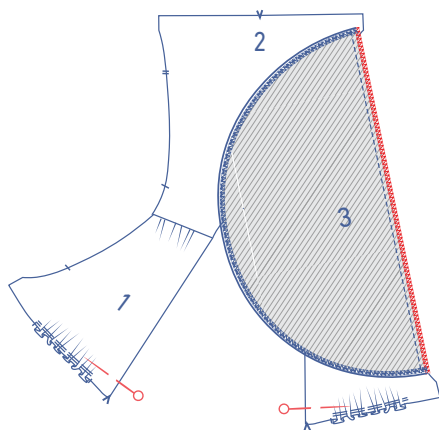
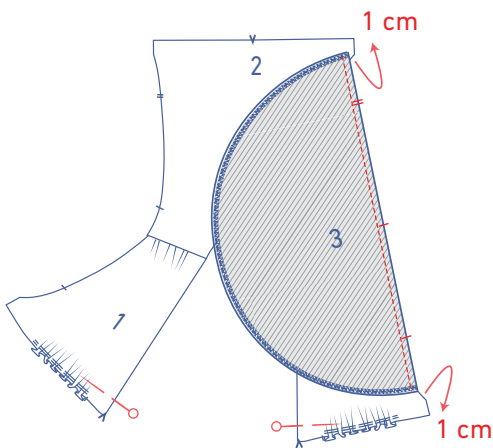
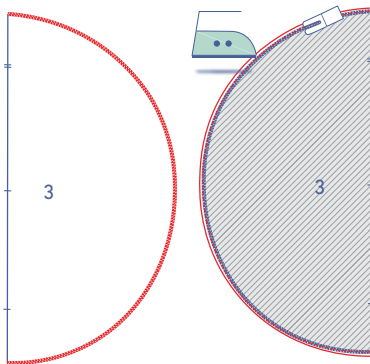


Fold the facing and interfaced portion of the fronts neatly onto the wrong side of the top. Pin the interfaced side temporarily into place at the bottom.

1.



2.



4

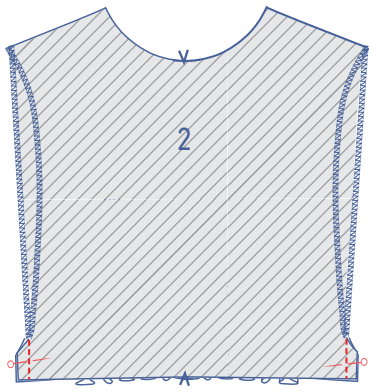
Finish the sleeve hem (3) with one of the following options:

1. with a rolled hem (if your overlocker has that option)

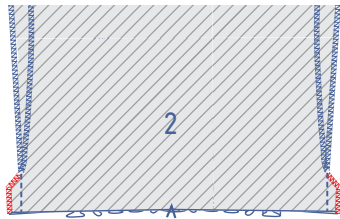
2. or with overlock stitching. Press the overlock stitching over and sew into place.

Pin and sew the sleeves to the armhole, matching the notches. The top should have 1 cm of seam allowance left on either side of the sleeve.

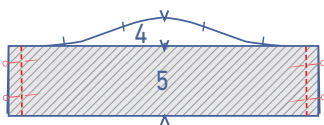
Finish the raw edges together with overlock stitching.



Sew the small ends of the side seam.

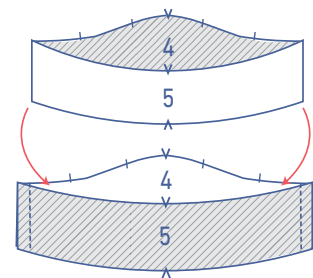
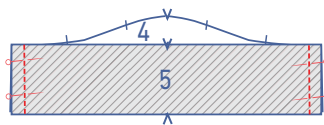


Finish the raw edges together with overlock stitching.

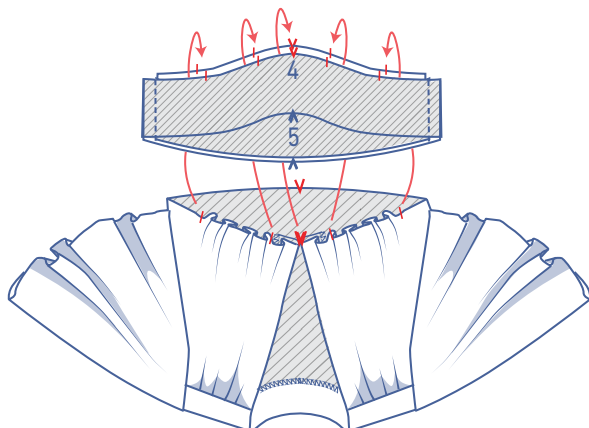


## 5

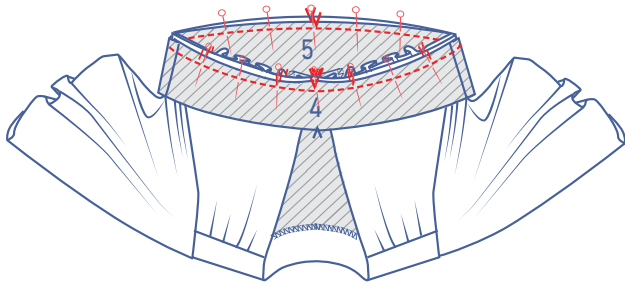
Pin and sew all the side seams of the front waistband (4) and back waistband (5) pieces together.



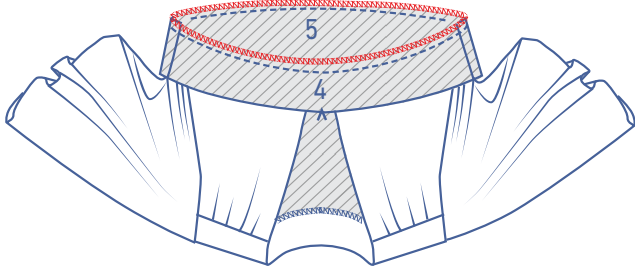
Turn one waistband the right way out and slide it into the other waistband so that the right sides are touching. Line up the tops of both waistbands with notches matching.



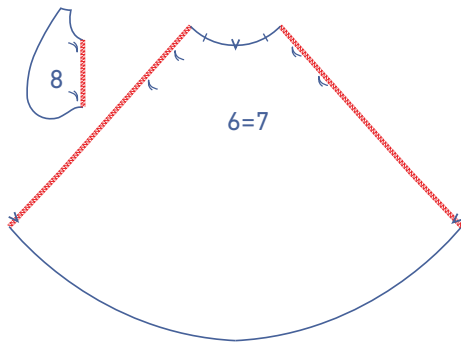
Slide the bodice so it is in between both waistbands.



Distribute the gathers at the bottom of the top front so the notches match those on the waistband. Make sure the V notches match. Pin and sew into place.

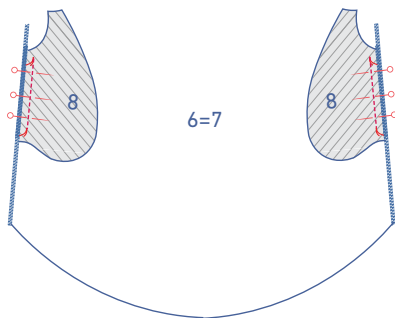


Finish the raw edges together with overlock stitching.

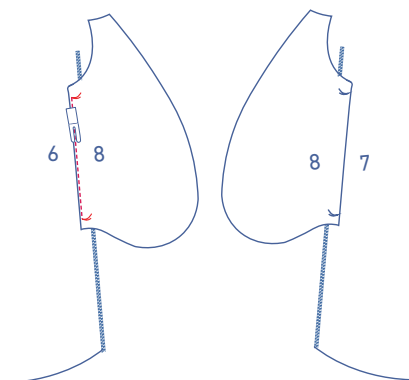


## 6

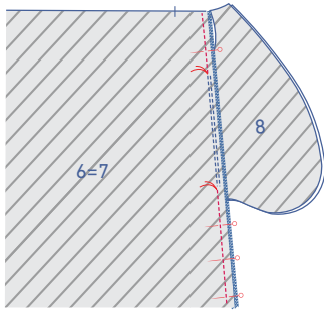
Finish the side seams of the skirt front (6) and skirt back (7) pieces and the straight ends of the pocket pieces (8) with overlock stitching.



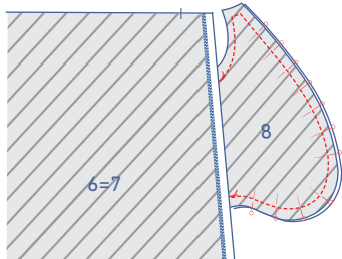
Pin and sew the pocket pieces to the side seams between the marking threads.



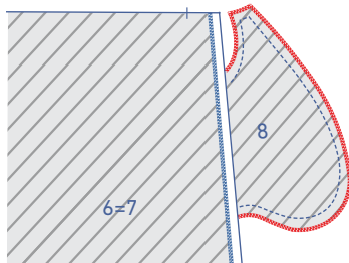
Fold over the pocket pieces that you sewed to the front, sew the pocket piece through all the layers of fabric (pocket + seam allowances) right next to the seam. (You'll omit this step for the back.)



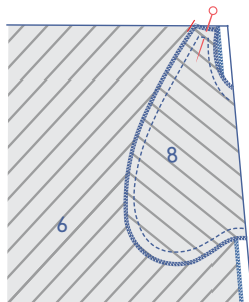
Pin and sew the side seams above and below the pocket openings together, always sewing up to the marking threads.



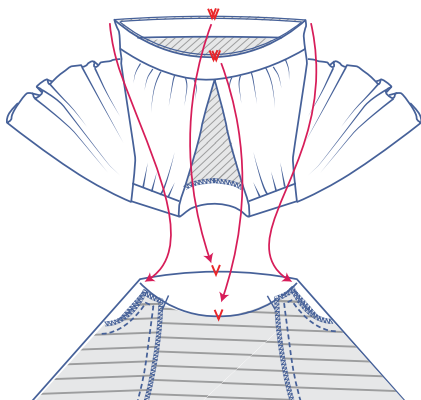
Pin and sew the marked edges of the pocket pieces together.



Finish the raw edges together with overlock stitching.

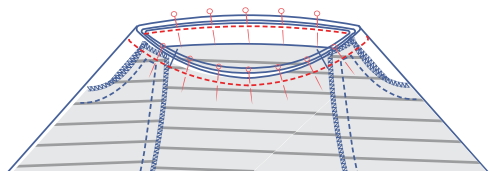


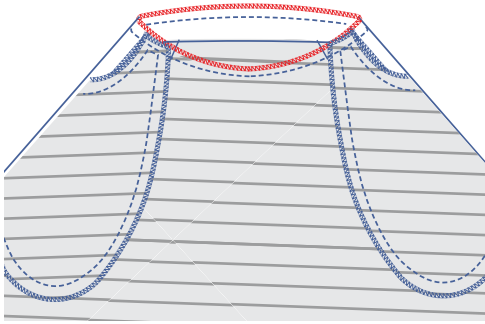
Place the raw edge of the pocket (closest to the CF) at the notch. Pin the top of the pocket to the waistline.



## 7

Slide the bodice into the skirt as shown, right sides together. Match the V notches and the side seams. Pin and sew.



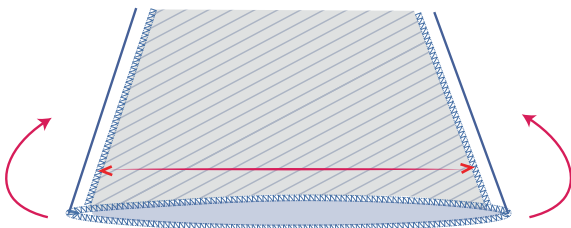


Finish the raw edges together with overlock stitching.

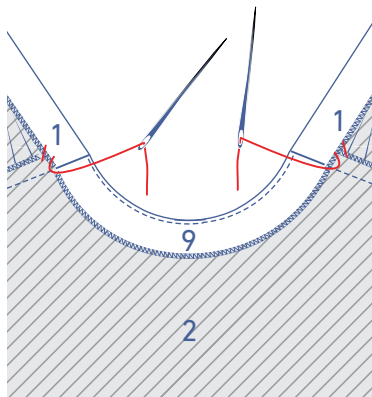
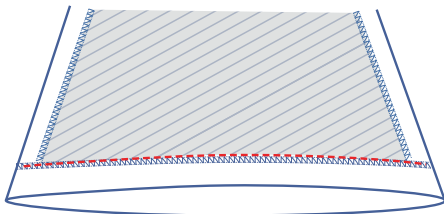


**8**

Finish the hem with overlock stitching.



Press the hem allowance over and sew into place.



**9**

Hand sew the shoulder seams together with just a few stitches (along the inside) to hold the facing into place.