

# Adam by Fibre ⚡ood

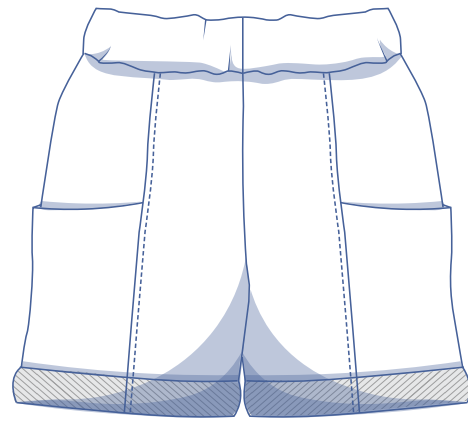
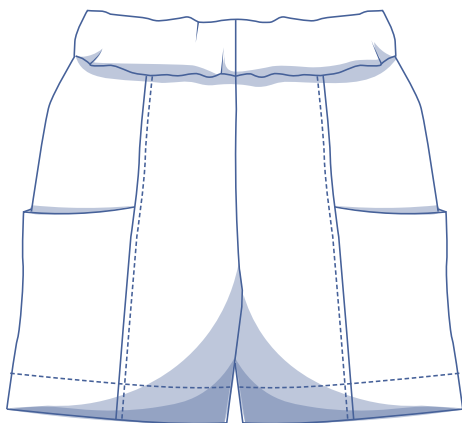
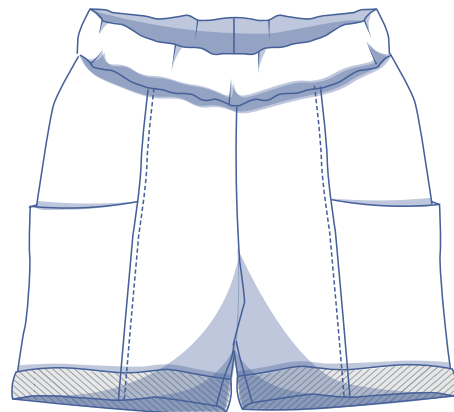
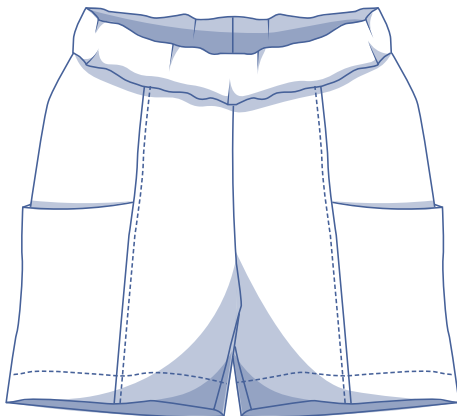


# Adam by Fibre Mood



2 - 14 years

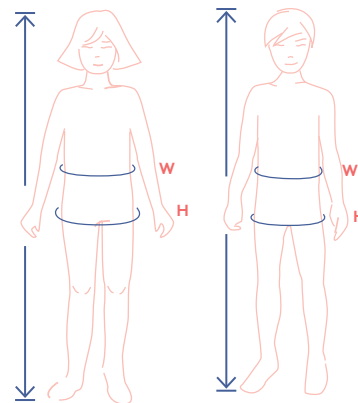
Adam is a winner! All the boys and girls love him because he's sturdy and original. These are the shorts of the year! Adam is a well-thought-out design with subtle lines and pockets that extend from the sides to the back. The elasticised waistband makes Adam comfy to wear all day long. There are two options for the hemline finish. Stitch all the way around, or be 'off-the-cuff' and turn them up. All options are on the table when it comes to the fabric. Just let your imagination run wild!



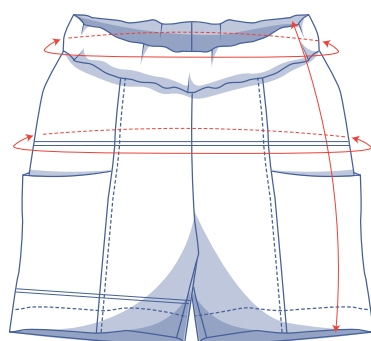
## size chart (in cm)

size	2	3	4	5	6	8	10	12	14
body height	92	98	104	110	116	125	137	150	160
W (waist)	50	52	53	54	55	57	60	63	66
H (hip)	56	58	60	62	64	68	72	76	80

Select the size based on the hip measurement (regardless of age or height). Pick the size that is the best match for the hips. The waistline measurement is a snap to alter with the elastic in the waistband. Next, alter the length of the chosen size based on age or height, listed in the table below.



## finished garment measurements (in cm)

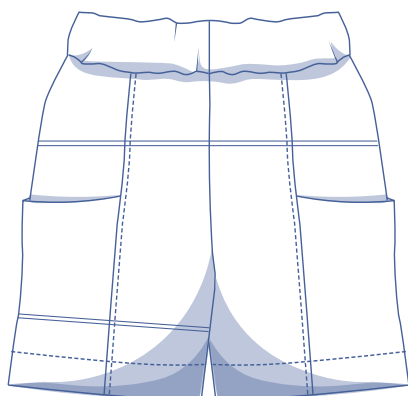


This chart's measurements are the pattern measurements based on the used fabric type and serve as a reference. Ease has been added to the width measurements (on top of the exact body measurements) for a more comfortable fit.

size	2	3	4	5	6	8	10	12	14
side length*	25.5	27.5	29.5	31.5	33.5	37.5	41.5	45.5	49.5
waist with elastic	44	46	48	50	52	56	60	64	68
waist without elastic	56.75	58.75	60.75	62.75	64.5	68.5	72.5	76.5	80.25
hips	60.5	62.75	64.75	67	69	73.25	77.5	81.5	85.75

\* Including the waistband.

— shorten or lengthen the pattern here



Compare the stated lengths to the measured or desired lengths. **Shorten** or **lengthen** the trouser legs and/or rise by cutting the pattern pieces at the indicated double lines. Then either increase the distance between the cut pieces by the desired amount (to lengthen) or overlap the pieces (to shorten). Make sure that the CF and CB lines and the side seams are always straight.

### IMPORTANT

The amount of fabric to be used may change based on the alterations.

## supplies



- Thread
- Elastic band (width 4 cm): see table
- Fabric: see table

elastic band		2	3	4	5	6	8	10	12	14
length	cm	47	49	51	53	55	59	63	67	71

fabric		2	3	4	5	6	8	10	12	14
fabric width 110	cm	50	55	60	60	75	85	95	105	115
fabric width 140	cm	45	45	50	50	50	70	80	85	95

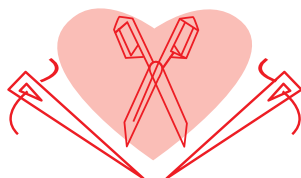
The corresponding fabric layout can be found on page 6 of these sewing instructions.

## fabric advice



Adam looks great in so many fabrics! Whether it's woven or knit, a solid colour or a funky design – anything goes! There's a treasure trove of sweatshirt fabric, French terry, interlock, cotton twill, jacquard, poplin, Tencel, etc. to choose from!

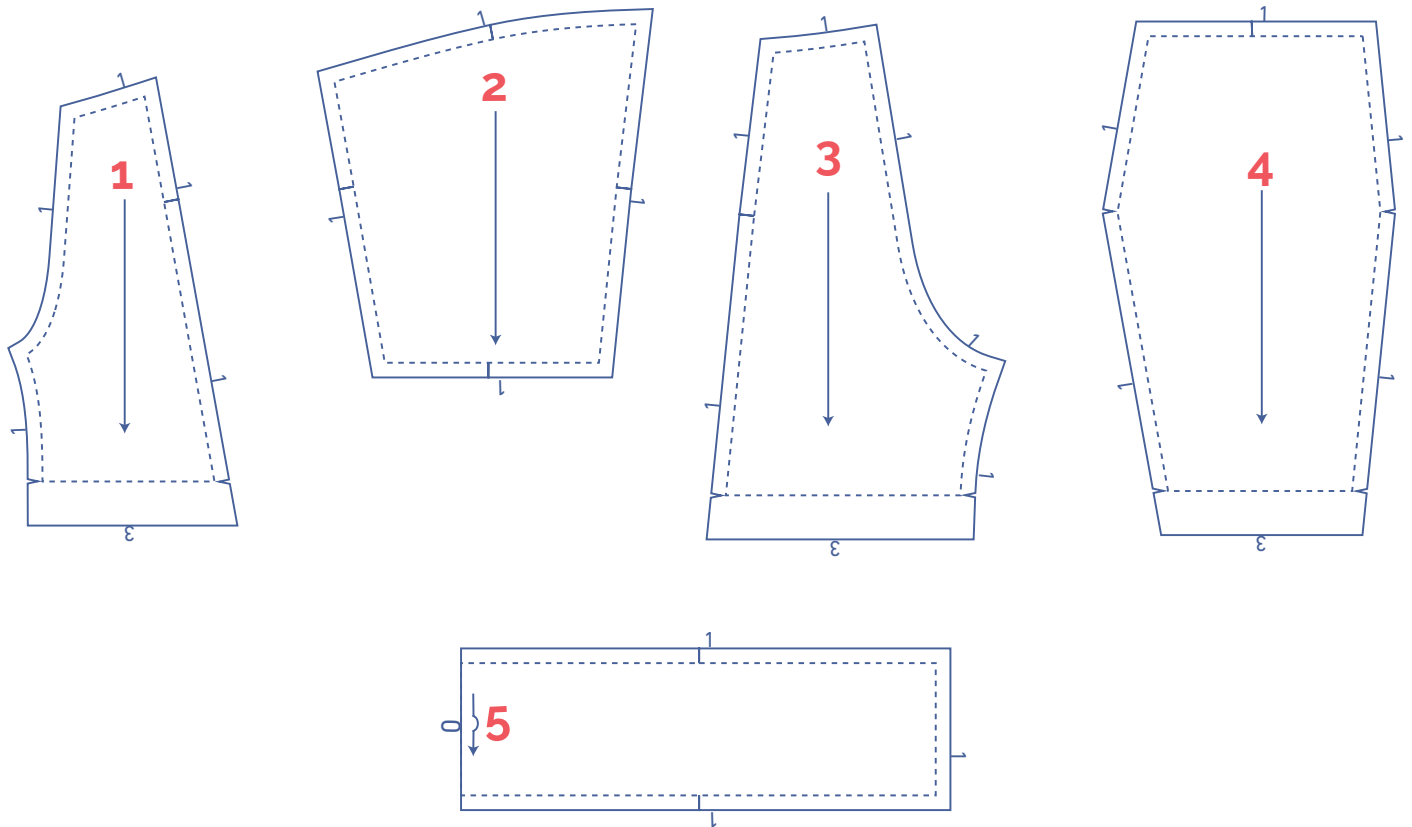
# Proud to be #Sewista



## pattern pieces & seam allowances (in cm)

To sew the garment as described in the instructions, you must draw the illustrated seam allowances around the paper pattern pieces before cutting them out. If you are using a pdf version of the pattern, you may print it with or without seam allowances. If you print with seam allowances, the solid lines denote the cutting lines, and dashed lines denote the stitch lines. Check out the [video](#).

1. front: 2x
2. side piece: 2x
3. back: 2x
4. pocket: 2x
5. waistband: 1x on fabric fold

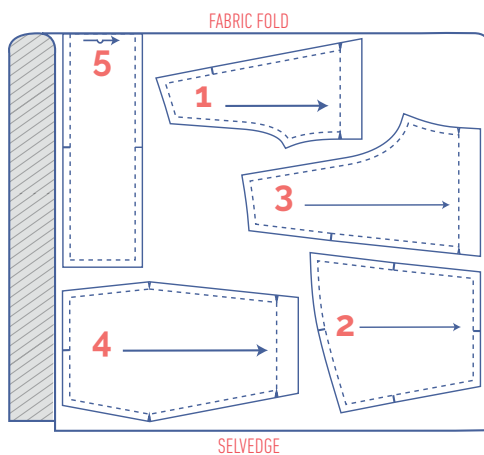


	material type
	fabric

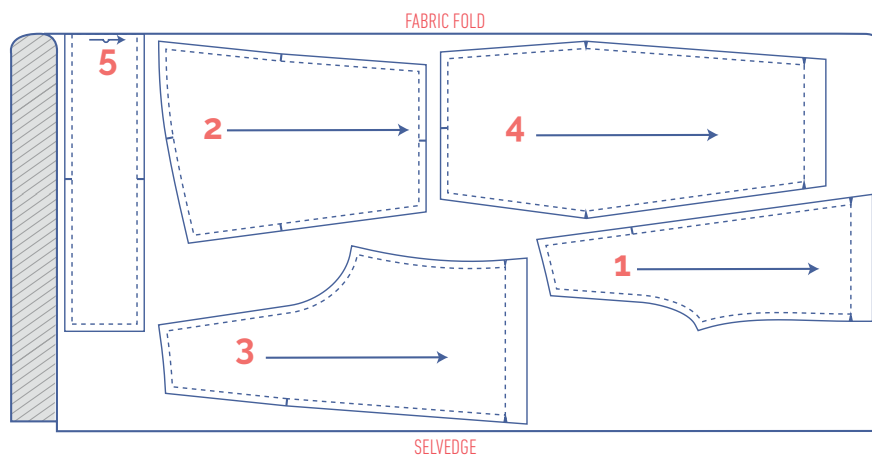
## fabric layout – solid fabrics

fabric width 110 cm

2 - 6 years



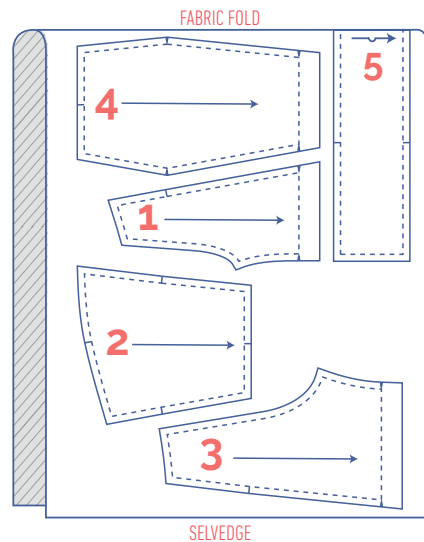
8 - 14 years

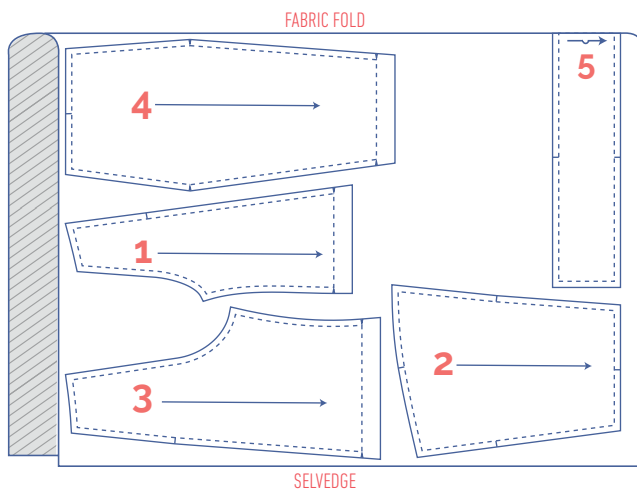


## fabric layout – solid fabrics

fabric width 140 cm

2 - 6 years





## marking pattern pieces

	notch the pattern paper and fabric at the following points
	single notch
	double notch
V	V notch

# sewing instructions



The method used to finish the seams depends on the fabric used.  
The pieces are always sewn together with the right sides of the fabric facing together, unless stated otherwise.

F front

B back

SP side piece



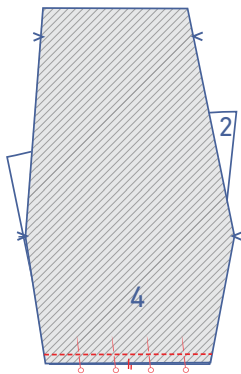
right side



wrong side

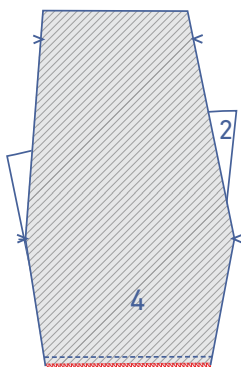


elastic band



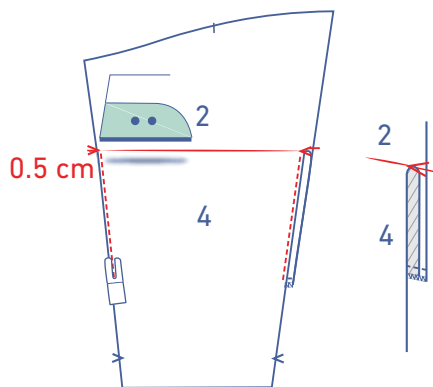
**1**

Pin and sew the straight end of the side of the pocket (4) to the straight end of the SP (2).

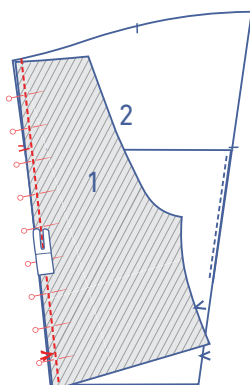


Finish the raw edges together with overlock stitching.



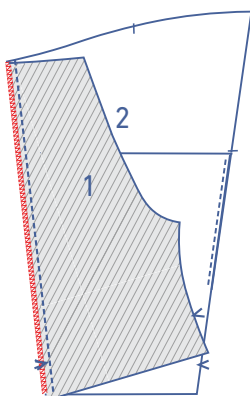


Fold and press the top of the pocket over at the V notches. Pin the finished top of the pocket into place, making sure it matches the notches on the SP. Sew into place at 0.5 cm from the raw edges as shown.

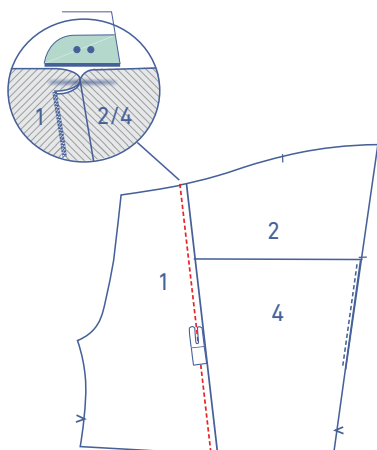


## 2

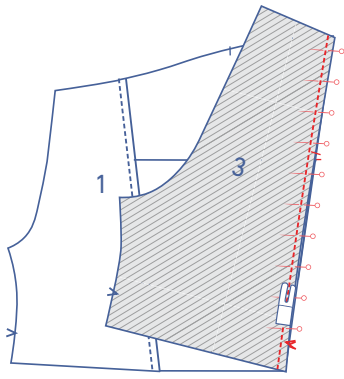
Pin and sew the front (1) and the SP together, matching the notches.



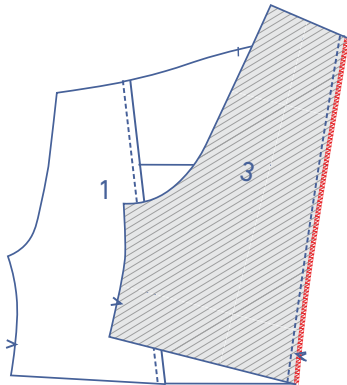
Finish the raw edges together with overlock stitching.



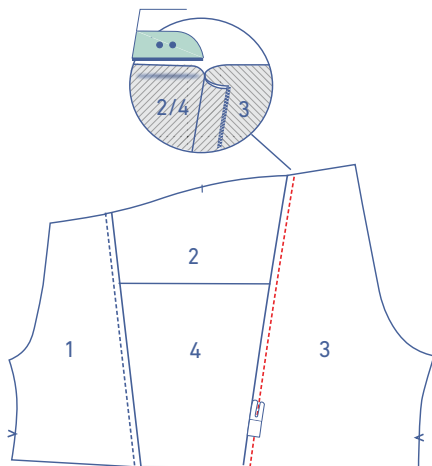
Press the seam allowance towards the front and topstitch the front at presser foot width from the seam.



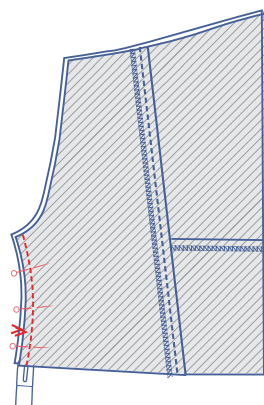
Pin and sew the back to the SP, matching the notches.



Finish the raw edges together with overlock stitching.

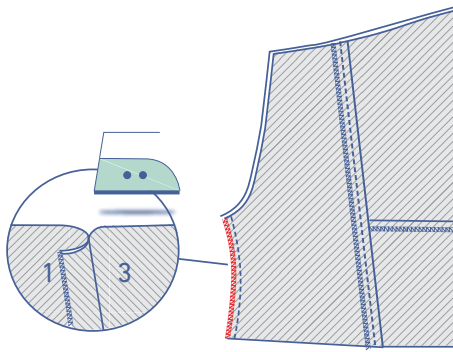


Press the seam allowance towards the back and topstitch the back at presser foot width from the seam.

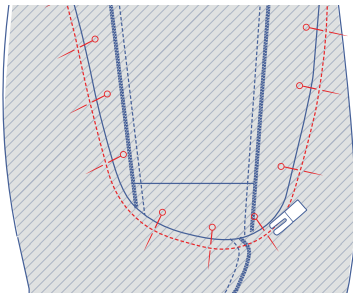


**3**

Pin and sew the inseams together.

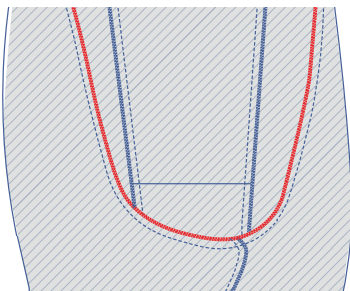


Finish the raw edges together with overlock stitching and press the seam allowance towards the front.



**4**

Turn one leg inside out, and the other right side out. Then slide the inside out leg into the right side out leg. Ensure the right sides are together. Pin and sew the crotch seam into place.

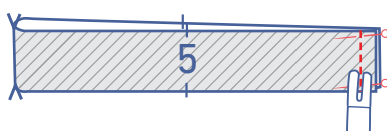
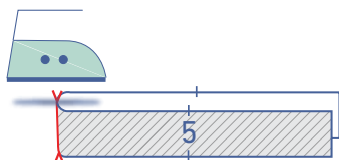


Finish the raw edges together with overlock stitching.

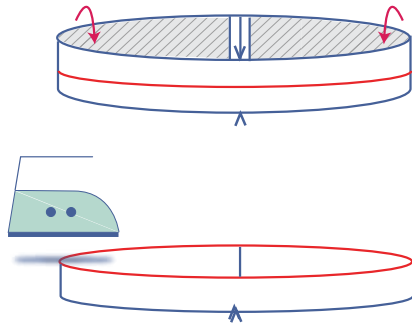


**5**

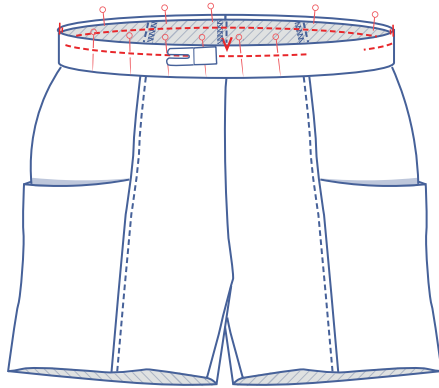
Fold the waistband (5) in half crosswise with the right sides of the fabric touching.



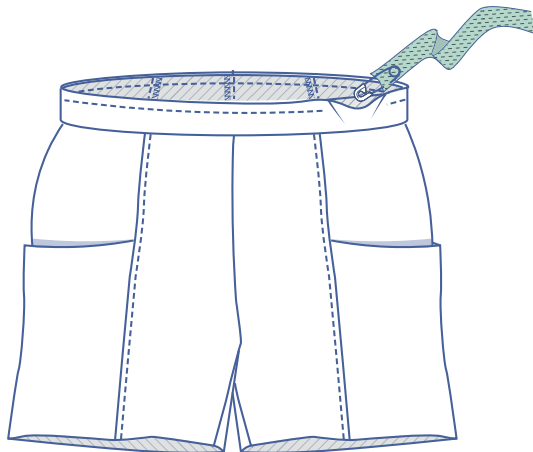
Pin and sew the short ends together. Press seam allowances open.



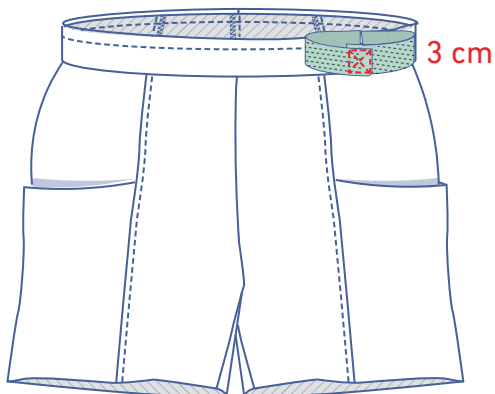
Press the waistband in half lengthwise with the wrong sides of the fabric touching.



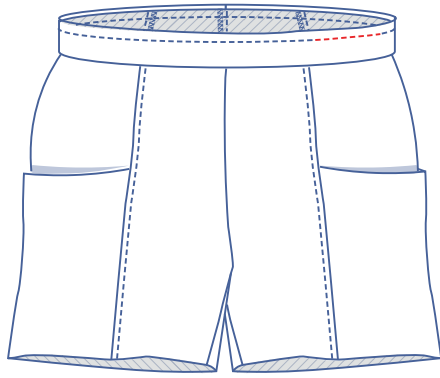
Line up the raw edges of the waistband with the waistline, matching the notches. Pin and sew, leaving an opening, so that you can thread the elastic through.



Thread the elastic through the casing.



Allow 3 cm of the ends to overlap and sew into place with a Box X stitch.



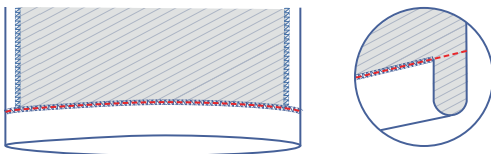
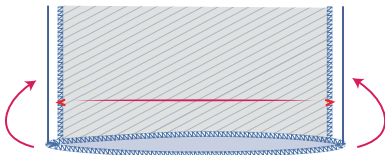
Pull the elastic all the way through the casing and sew the opening closed.

## 6

There are 2 options for finishing the hemline of the shorts:

### option A

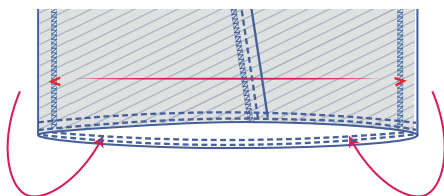
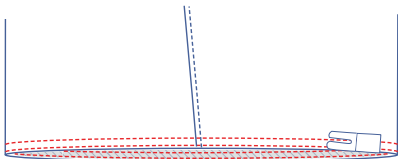
Finish the hem with overlock stitching.



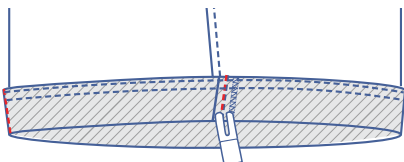
Press the hem allowance onto the wrong side and sew into place.

### option B

Sew a line of stitching right next to the edge of the hem and then sew a second row at presser foot width from the first.



Fold the hem allowance onto the right side.



Sew the hem allowance into place along the inseam and side seams.