

Indira by Fibre ood



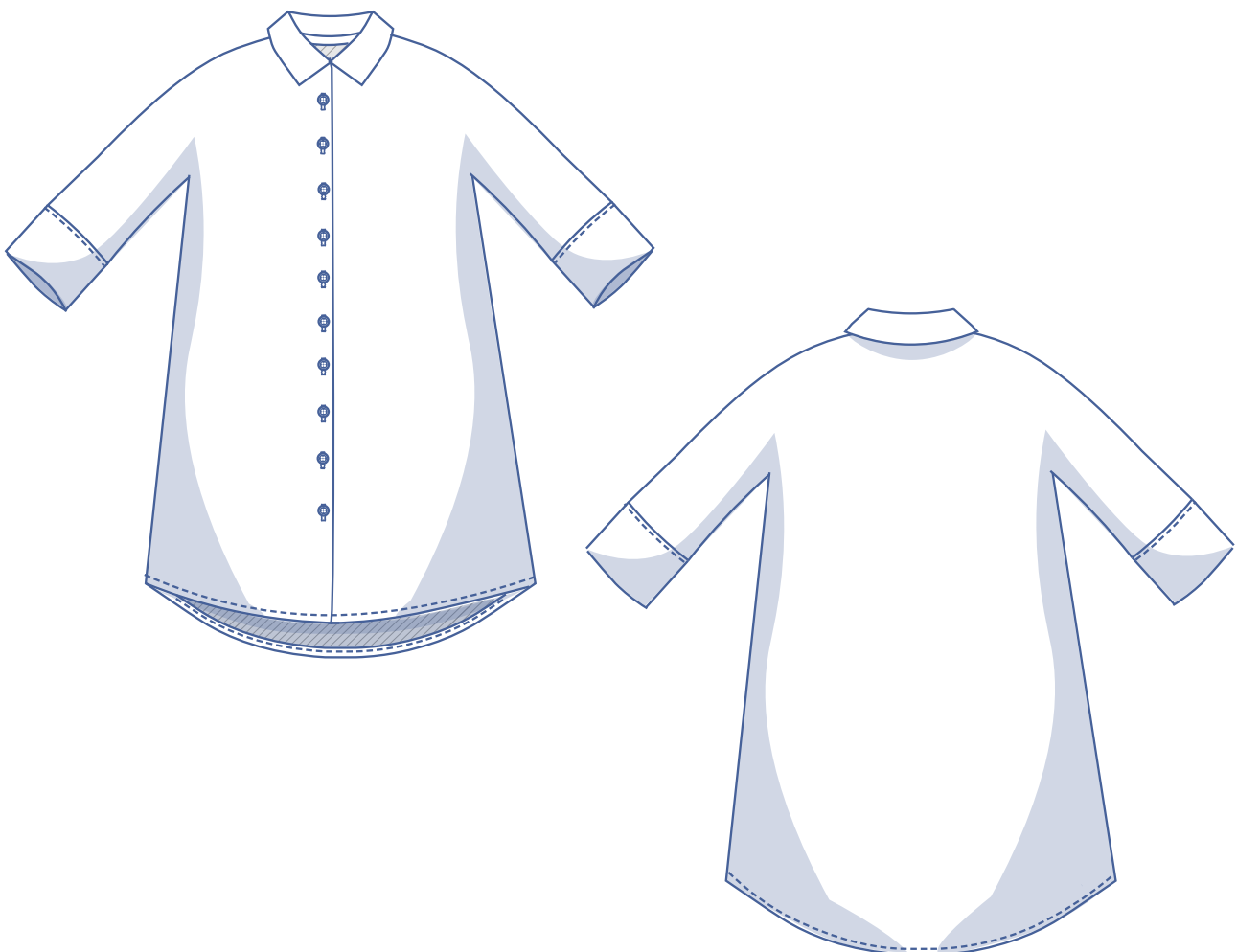
Indira by Fibre Mood



XS - XXXL

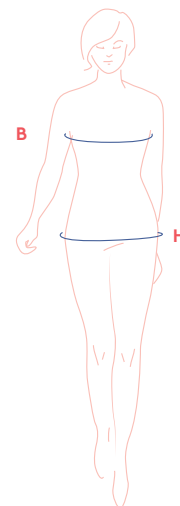
Coffee with your besties? Indira.
Heading into the office? Indira.
Skipping town for the weekend? Indira.
In short: the Indira has you covered!

This comfortable tunic dress with a slight A-line cut has shaped sleeves with wide wrist trims. It looks a treat made up knee-length, but you're the boss! Wear it with a pair of jeans, leggings or cosy tights. Oh, and it has pockets!



size chart (in cm)

size	XS		S		M		L		XL		XXL		XXXL	
EU	32	34	36	38	40	42	44	46	48	50	52	54	56	58
UK	4	6	8	10	12	14	16	18	20	22	24	26	28	30
B (cm)	76	80	84	88	92	96	100	104	110	116	122	128	134	140
H (cm)	86	90	94	97t	100	103	106	109	115	120	125	130	135	140

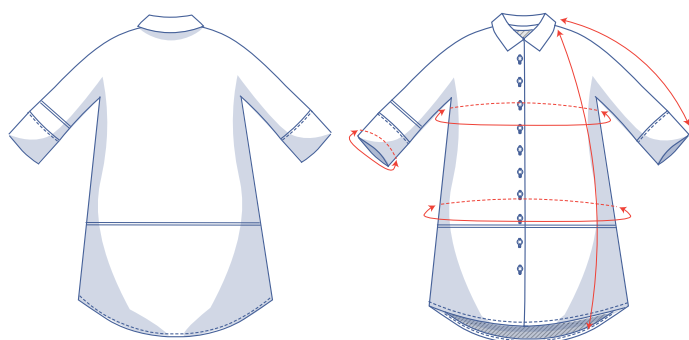


Bust (B): measure horizontally around the fullest part of the bust.

Hip (H): measure horizontally around the widest part of the lower body.

For this pattern, you should choose the size based on your bust measurement. Pick the size that is the best fit for your bust measurement. Altering the hips is easy. Simply trace the line of the one size instead of the other.

finished garment measurements (in cm)



you can lengthen
or shorten the pattern here

This chart's measurements are the pattern measurements based on the fabric type and serve as a reference. For a more comfortable fit and to achieve a particular cut (fitted, loose or oversized), ease has been added to the width measurements (in addition to the exact body measurements). Depending on the preferred cut, you could possibly go a size smaller or larger than the size chosen.

size	XS	S	M	L	XL	XXL	XXXL
length	105.25	106.25	107.5	109.5	112.25	114.75	116.25
sleeve length*	62.5	64.25	65.75	67.25	68.75	70.5	71.75
bust	108.25	116.25	124.25	132.25	142.25	154.25	166.25
hips	110	118	126	134	144	156	168
wrist trim circumference	29	30	31	32	33	34	35

* Including the shoulder length and wrist trim.

Compare the stated lengths to the measured or desired lengths. **Lengthen** or **shorten** the dress and/or the sleeves by cutting the pattern pieces at the indicated double lines and then spreading the pattern pieces out X cm from each other or overlapping them where needed. Make sure that the CF and CB lines and the side seams are always straight.



IMPORTANT

Adjust the amount of fabric to be used based on the alterations.

supplies



- Thread
- Iron-on interfacing: max. 80 cm
- Buttons (Ø 1.1 cm): 10 or 11
- Fabric: see table

fabric used (in cm) standard	XS	S	M	L	XL	XXL	XXXL
fabric width 110 cm	285	290	290	295	345	375	390
fabric width 140 cm	205	205	210	215	280	295	305

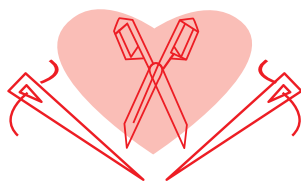
The corresponding fabric layout can be found as of page 6 of these sewing instructions.

fabric advice



There are so many fabrics that would work well with this dress. Our preference is for fabrics with a fluid drape, such as crepe (whether viscose or polyester), viscose fabrics in a print, cotton, chambray (for a denim look), denim or suede, etc.

Proud to be #Sewista



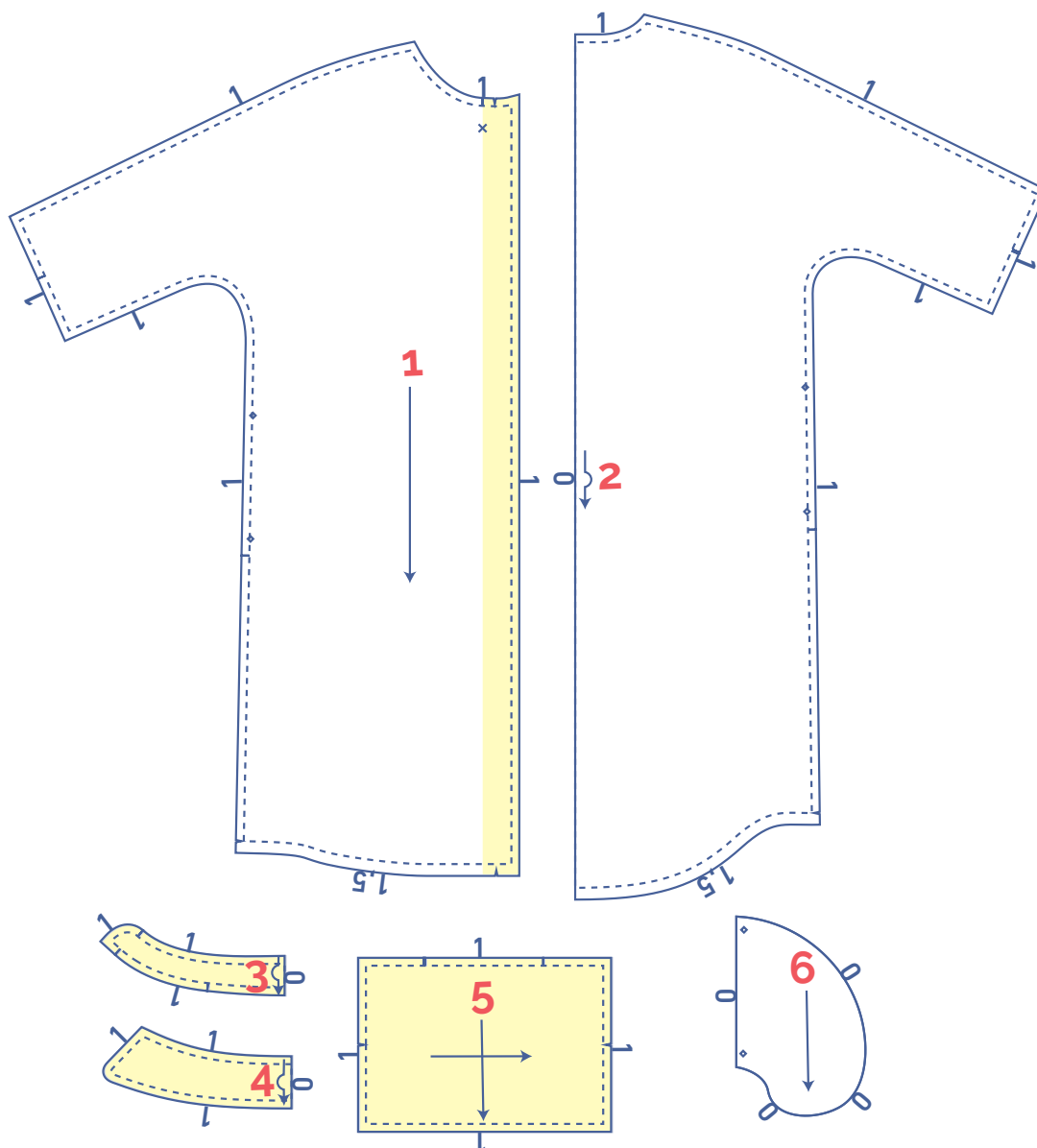
pattern pieces & seam allowances (in cm)

To sew the garment as described in the instructions, you must draw the illustrated seam allowances around the paper pattern pieces before cutting them out.

1. front: 2x
2. back: 1x on fabric fold
3. collar: 2x on fabric fold
4. collar stand: 2x on fabric fold
5. wrist trim: 2x
6. pocket: 4x

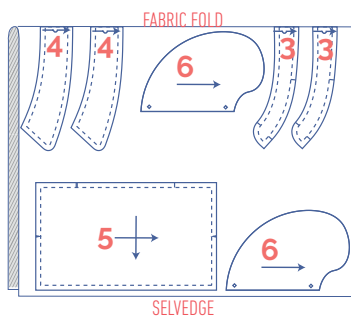
IMPORTANT

The pieces highlighted in light yellow have iron-on interfacing attached to the wrong side.



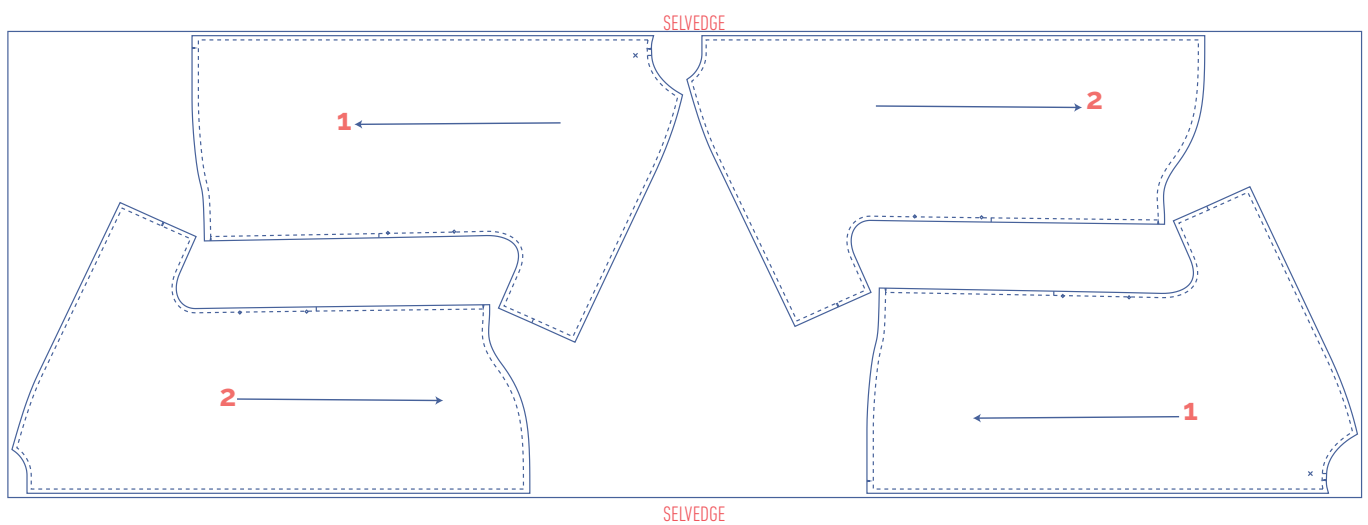
fabric layout for fabrics 110 cm wide

XS - XXXL



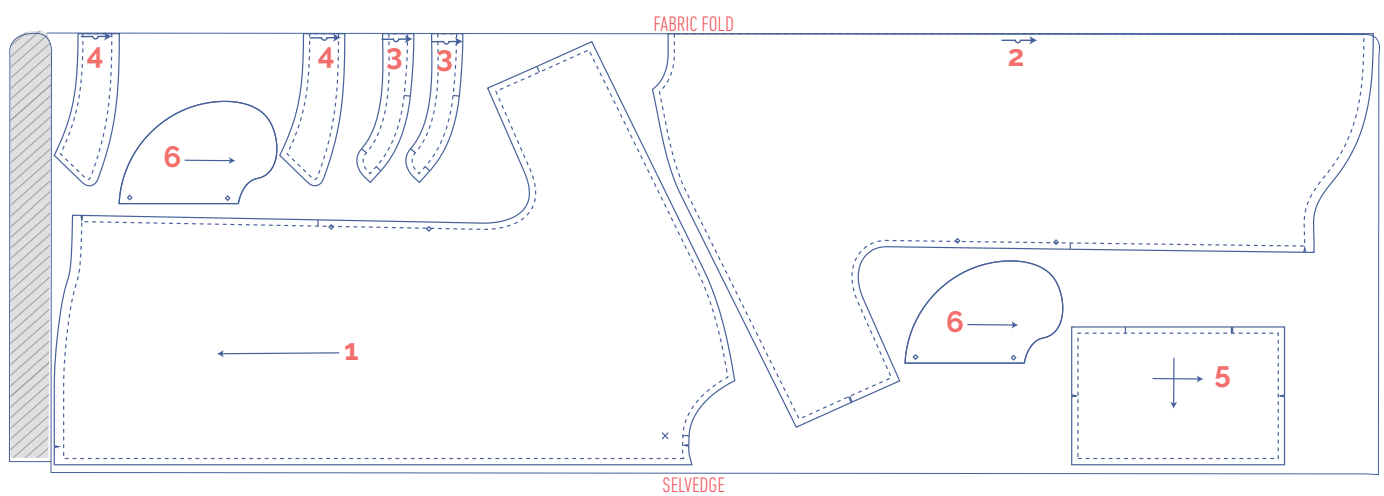
ATTENTION!

Cut the pattern piece 2 in 2 at CB and add seam allowance.

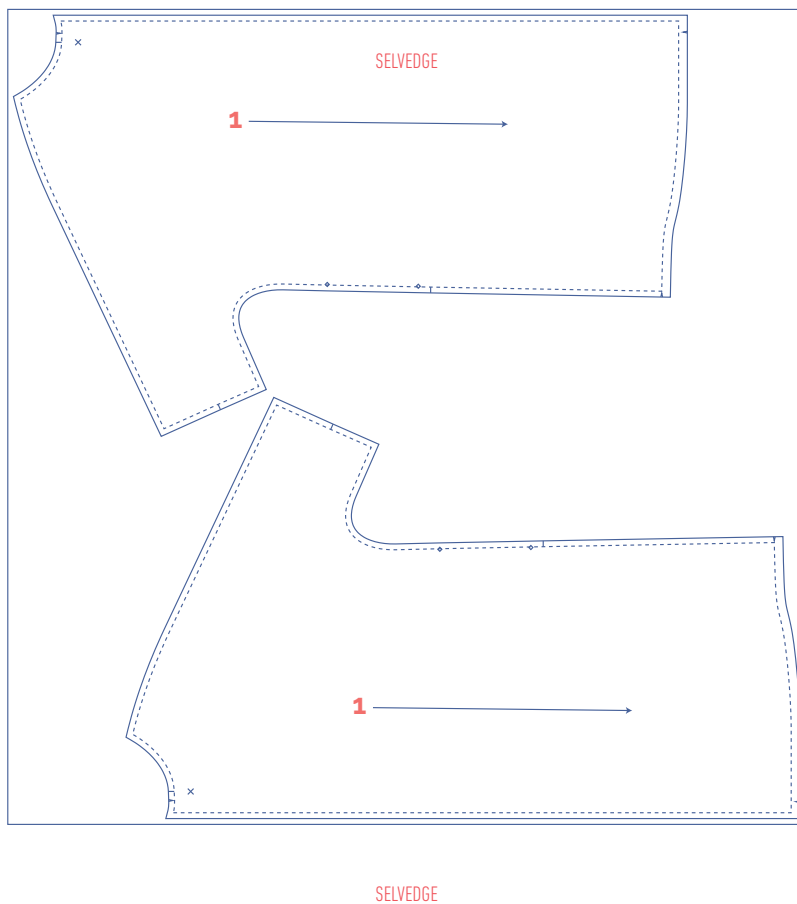
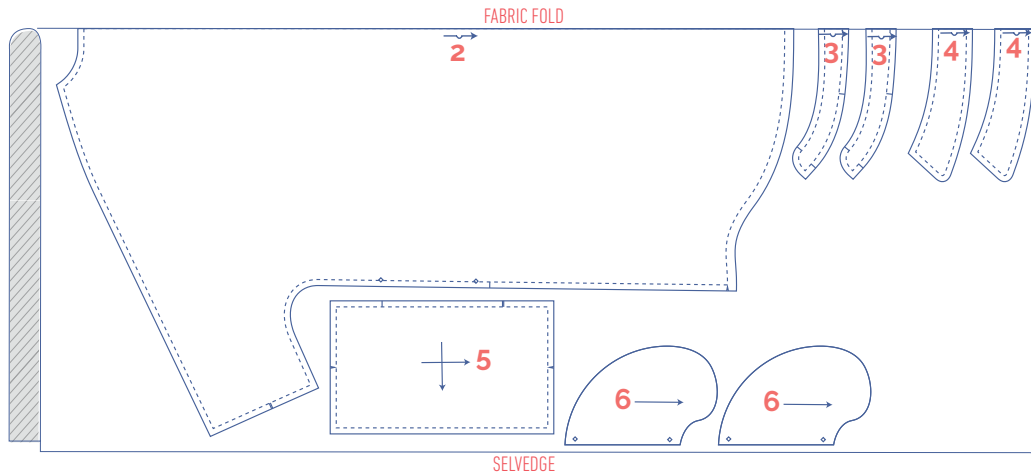


fabric layout for fabrics 140 cm wide

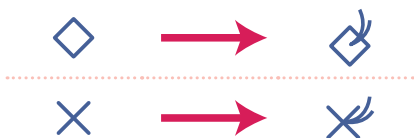
XS - L



XL - XXXL



- Mark the next points with basting thread:



- Nick the pattern paper and fabric at the places where a single vertical line (I) and double vertical lines (II) are indicated.
- Cut a small notch out of the fabric at a V notch symbol or on the finished hemline.
- Cut a small notch (V notch) out of the pieces that lie on the fabric fold (—) to mark the middle of these pieces.

sewing instructions



The method used to finish the garment will depend on your chosen fabric. The pieces are always sewn together with right sides facing, unless stated otherwise.

F front

B back

RF right front ●

LF left front ●

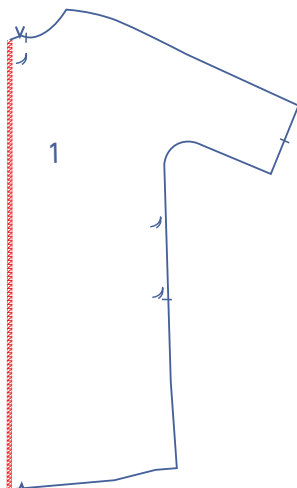
CF centre front

CB centre back

□ right side

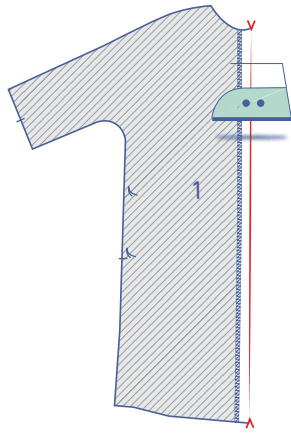
▨ wrong side

▤ iron-on interfacing

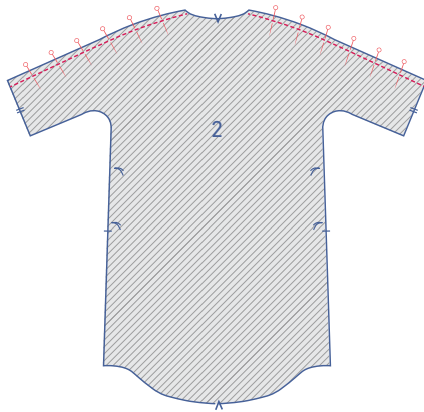


1

Finish the straight side of the self-facing of the front (1) with overlock stitching.

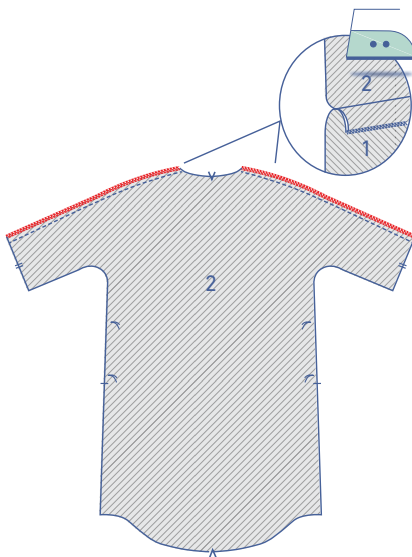


Press over at the V notches.

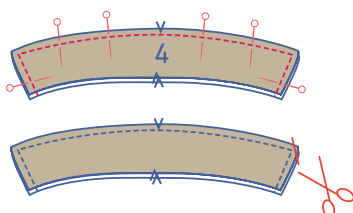


2

Pin and sew the shoulder seams.

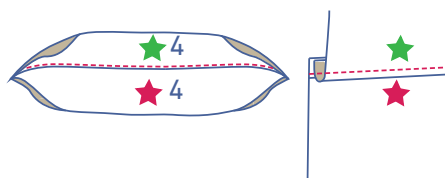


Finish the raw edges together with overlock stitching. Press the seam allowance towards the front.

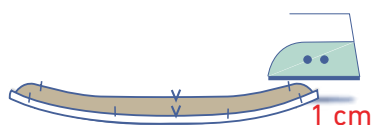
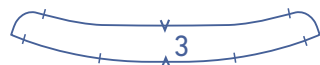


3

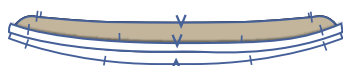
Pin and sew the contour of the collars (4) to each other, leaving the lower edge free. Trim the seam allowance in the corners.



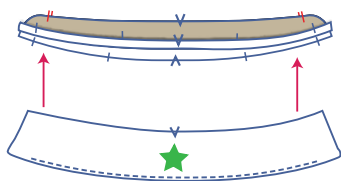
Open both collar pieces out, so that the right sides are facing up. The top collar (= visible when wearing the top) is indicated with a red star, while the under collar is marked with a green star. Fold the seam allowance towards the under collar (green star). Sew the under collar at 2 mm from the seam through all layers (under collar + seam allowance). Next, neatly press the collar pieces up.



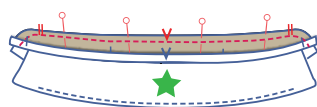
Press one of the two collar stands (3) at the bottom 1 cm over to the wrong side.



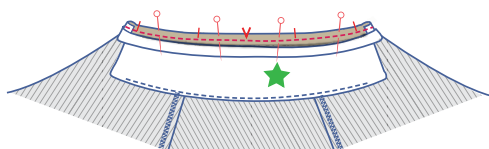
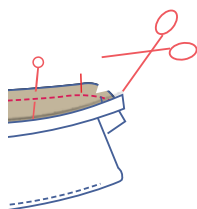
Stack both collar stands with the right sides facing each other. The collar stand with the pressed over bottom should be on top.



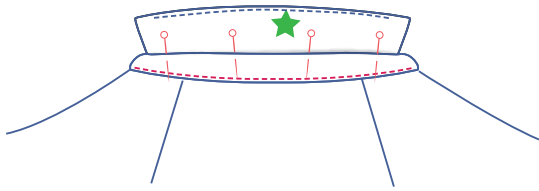
Slide the collar (green star, facing up) between the 2 collar stands and line up the raw edges.



Pin and sew the raw edges of all collar pieces together. Grade and trim the seam allowances in the curves. Now, turn the collar stands the right way out.



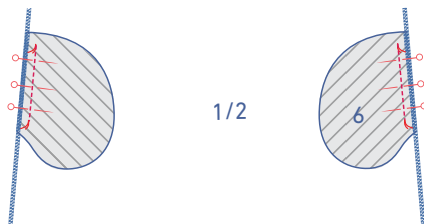
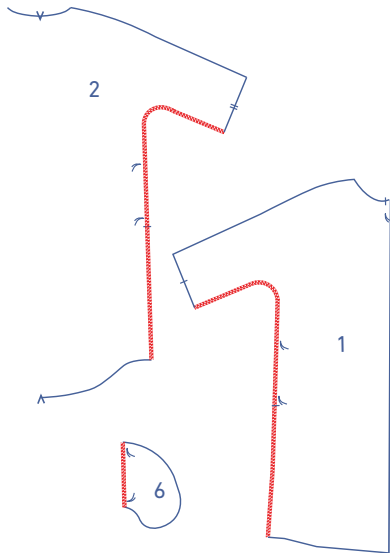
Pin and sew the bottom of the collar stand that has not been pressed under to the neckline along the wrong side of the neckline.



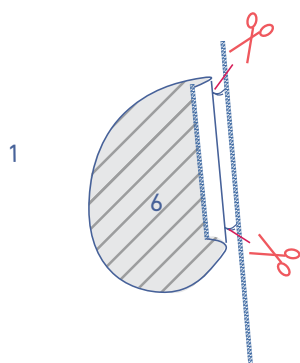
Fold the collar stand with the bottom that has been pressed over onto the right side of the garment. The fold line should lie precisely over the previous row of stitching. Pin and sew into place just next to the edge.

4

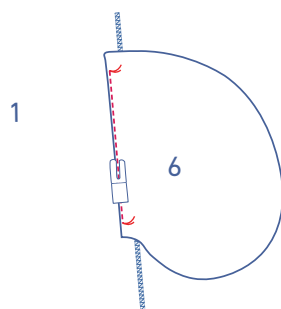
Finish the side and underarm seams and the straight edge of the pocket (6) with overlock stitching.



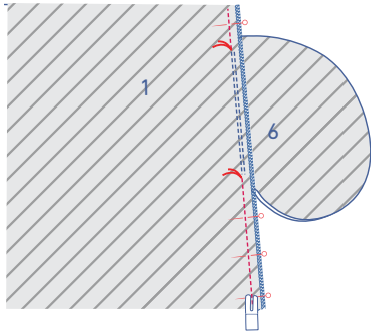
Pin the straight edge of the pocket to the side seam of the front and back with marking threads matching. Sew into place between the marking threads.



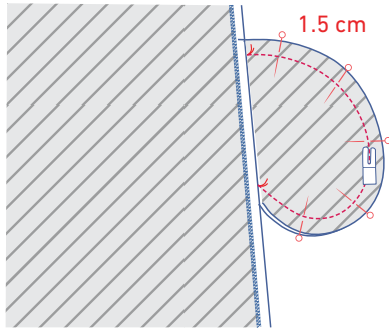
Fold the seam allowance of the pocket at the front and snip diagonally into the front just up to the marking thread.



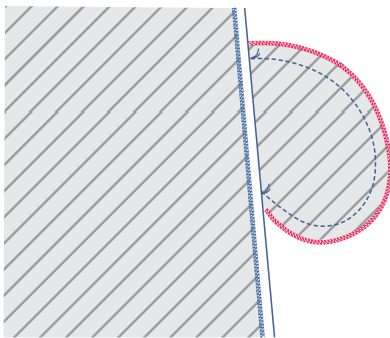
Fold the pocket of the front and the seam allowance over away from the main body of the garment and stitch at 2 mm from the seam, sewing through all layers (= the pocket + the underlying seam allowance of the front).



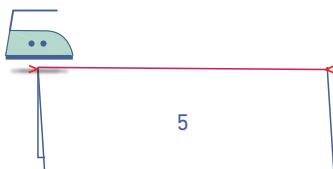
Pin the side and underarm seams into place. Sew right into the marking threads of the pocket, and then continue sewing from the next marking thread to the bottom.



Pin both pocket pieces together and sew at 1.5 cm from the raw edges. Move the seam allowances of the front and back out of the way, so that you can sew all the way to the marking threads.

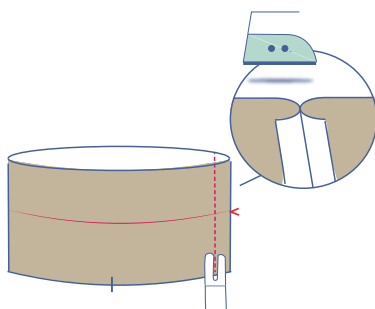
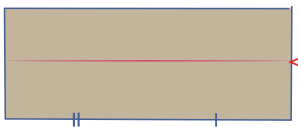


Finish the raw edges together with overlock stitching.

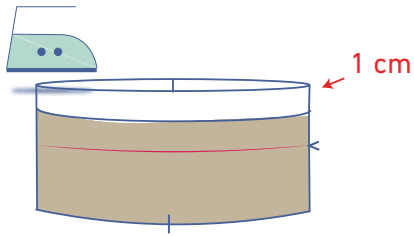


5

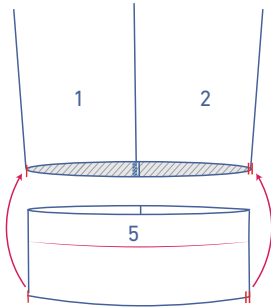
Press the wrist trim (5) in half lengthwise with the right side of the fabric facing outwards to create a fold line. Open back out again.



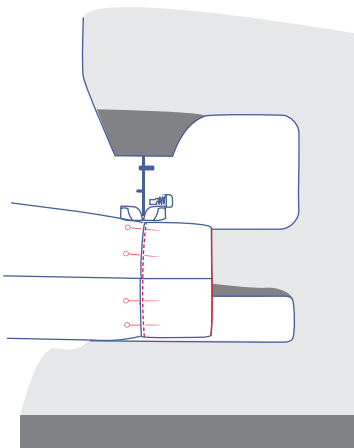
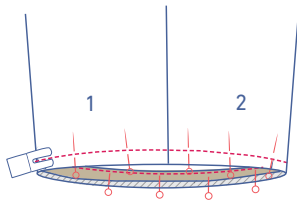
After that, fold the wrist trim in half widthways with the right side of the fabric facing inwards. Pin and sew the seam. Press open the seam allowance.



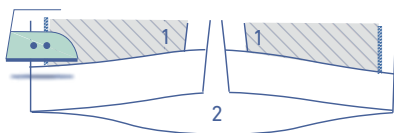
Press the long edge without the nicks 1 cm onto the wrong side.



Pin and sew the raw edge that hasn't been pressed to the wrong side of the sleeve with the corresponding notches matching.

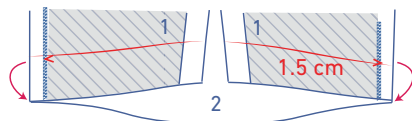


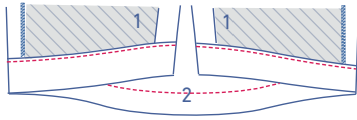
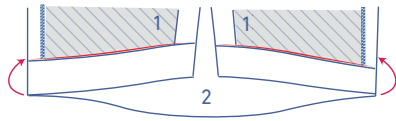
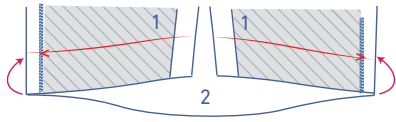
Fold the wrist trim towards the right side of the sleeve and place the fold line (of the pressed over seam allowance) directly over the previous stitching. Sew into place right next to the edge.



6

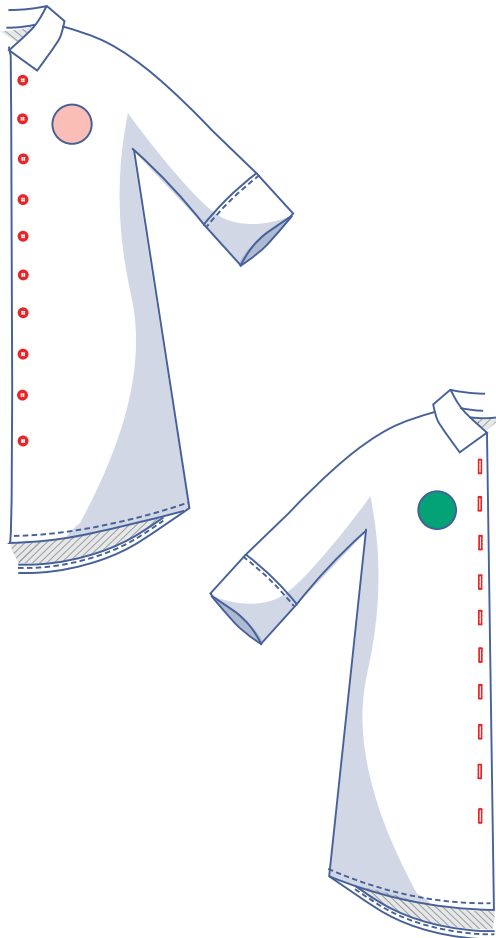
Fold the hem 1.5 cm over and open back out.





Place the raw edge along the pressed fold line and then fold a second time along the pressed fold line.

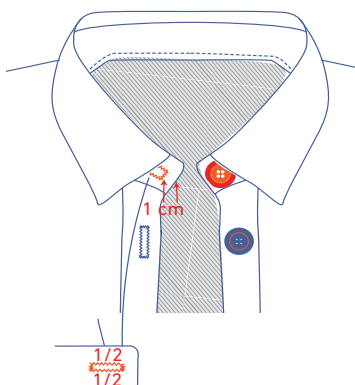
Sew into place right next to the edge.



7

Sew the buttons onto the LF. The top and bottom button placements are marked on the pattern. Divide the distance between these 2 buttons evenly to determine the locations of the other buttons.

Make vertical buttonholes in the RF.



Make a horizontal buttonhole on the right side of the collar stand halfway up at 1 cm from the finished inside edge. Sew a button on the left side of the collar stand that lines up with the buttonhole.