

# Hettie by Fibre ⚡ood

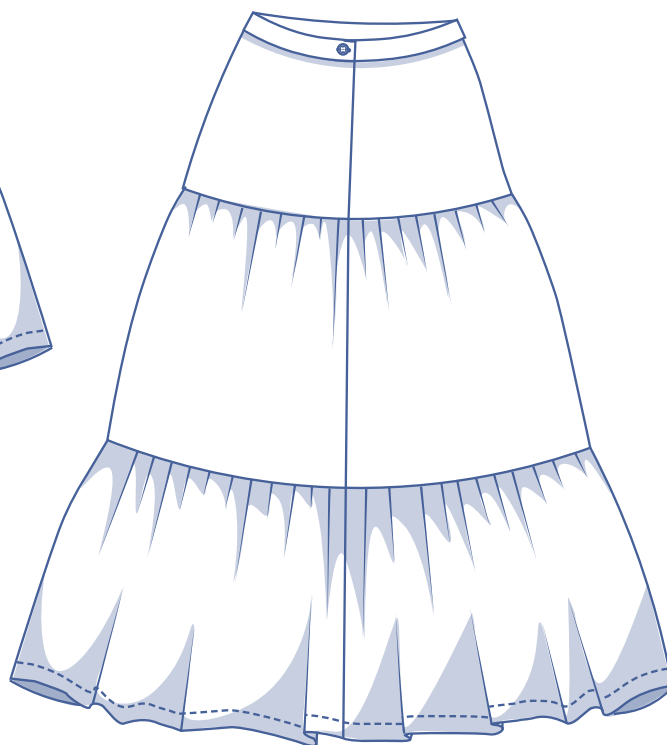
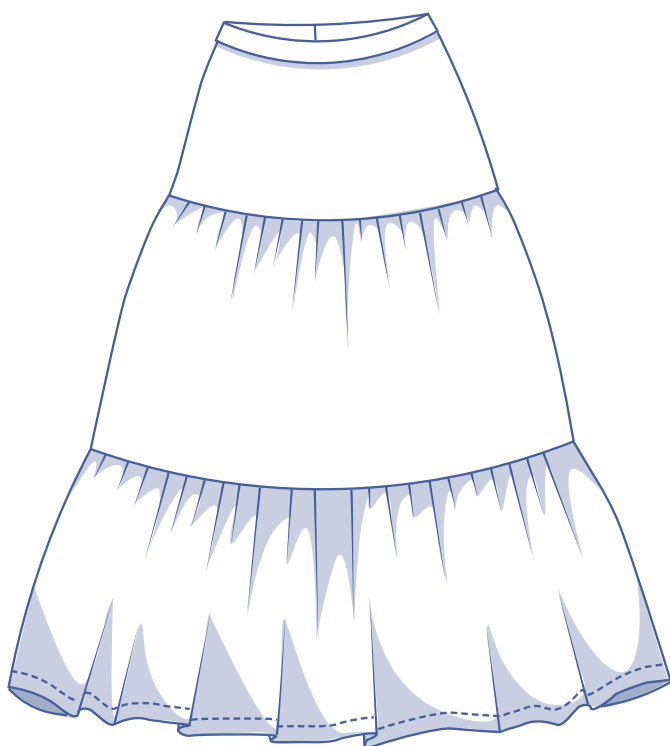


# Hettie by Fibre Mood



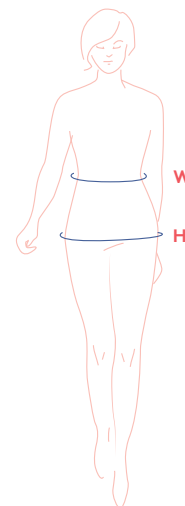
0 - 26

The romantic Hettie skirt makes up beautifully in a light or medium weight fabric with fluid drape. Think crepe, satin, chiffon etc. Fabrics with more body like cotton and linen also work well, just keep in mind that the gathers will be more pronounced with the extra volume! Make it up in solid colours, ditsy florals or cotton eyelet.



## size chart (in inches)

size	32	34	36	38	40	42	44	46	48	50	52	54	56	58
US	0	2	4	6	8	10	12	14	16	18	20	22	24	26
W	26	26.8	27.6	29.1	30.7	32.3	33.1	34.6	37.2	39.8	42.3	44.9	47.4	50
H	33.9	35.4	37	38.2	39.4	40.6	41.7	42.9	45.3	47.2	49.2	51.2	53.1	55.1

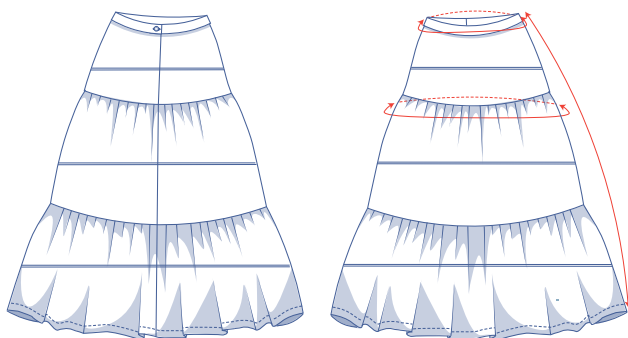


**Waist (W):**measure horizontally at the narrowest point of the body.

**Hip (H):** measure horizontally around the widest part of the lower body.

You should choose your size based on your waistline measurement. Pick the size that fits your waistline measurement best. If your hips are wider than what's stated in the size chart, look at the chart below with hip measurements to see whether there's enough room at the hips or if the hip measurements will need to be altered. It's easy to do. Just trace the pattern, and instead of tracing the line for the smaller size, trace the line for the larger size.

## finished garment measurements (in inches)



This chart's measurements are the pattern measurements based on the fabric type and serve as a reference. For a more comfortable fit and to achieve a particular cut (fitted, loose or oversized), ease has been added to the width measurements (in addition to the exact body measurements). Depending on the preferred cut, you could possibly go a size smaller or larger than the size chosen.

— you can lengthen  
or shorten the pattern here

size	0	2	4	6	8	10	12	14	16	18	20	22	24	26
side length*	39.50	39.75	40	40.25	40.25	40.50	40.75	40.75	41	41.25	41.50	41.75	41.75	42
waistline	26.75	27.50	28.25	30	31.50	33	33.75	35.50	38	40.50	43	45.75	48.25	50.75
hips	38.25	39.75	41.25	42.50	43.75	45	46	47.25	49.50	51.50	53.50	55.50	57.50	59.25

\*Including the waistband.

Compare the stated lengths to the measured or desired lengths. **Lengthen** or **shorten** the skirt by cutting the pattern pieces at the indicated double lines and then spreading the pattern pieces out X inches from each other or overlapping them, where necessary. Make sure that the CF and CB lines and the side seams are always straight.



### IMPORTANT

Adjust the amount of fabric to be used based on the alterations.

## supplies



- Thread
- Iron-on interfacing: max. 1/5 yd
- Invisible zip: 8"
- Button (Ø ¾"): 1
- Fabric: see table

fabric used (in yards) standard	0	2	4	6	8	10	12	14	16	18	20	22	24	26
fabric width 43"	3	3	3	3 ¼	3 ½	3 ¾	4	4	4 ¼	4 ¼	4 ½	4 ½	4 ¾	4 ¾
fabric width 55"	2 ¼	2 ¼	2 ¼	2 ½	2 ½	2 ½	2 ½	2 ¾	2 ¾	3	3 ¼	3 ¼	3 ½	3 ¾

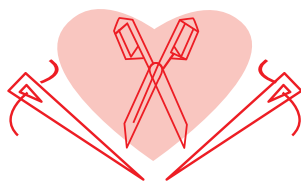
The corresponding fabric layout can be found as of page 6 of these sewing instructions.

## fabric advice



The romantic Hettie skirts look lovely in a light- or medium weight fabric with a fluid drape. Think crepe, satin, muslin, chiffon, etc. Somewhat stiffer fabrics such as cotton, linen, etc. also work. Just keep in mind that the ruffles will be a little more pronounced. The Hettie skirt looks sweet in solid, delicate print and eyelet fabrics.

# Proud to be #Sewista



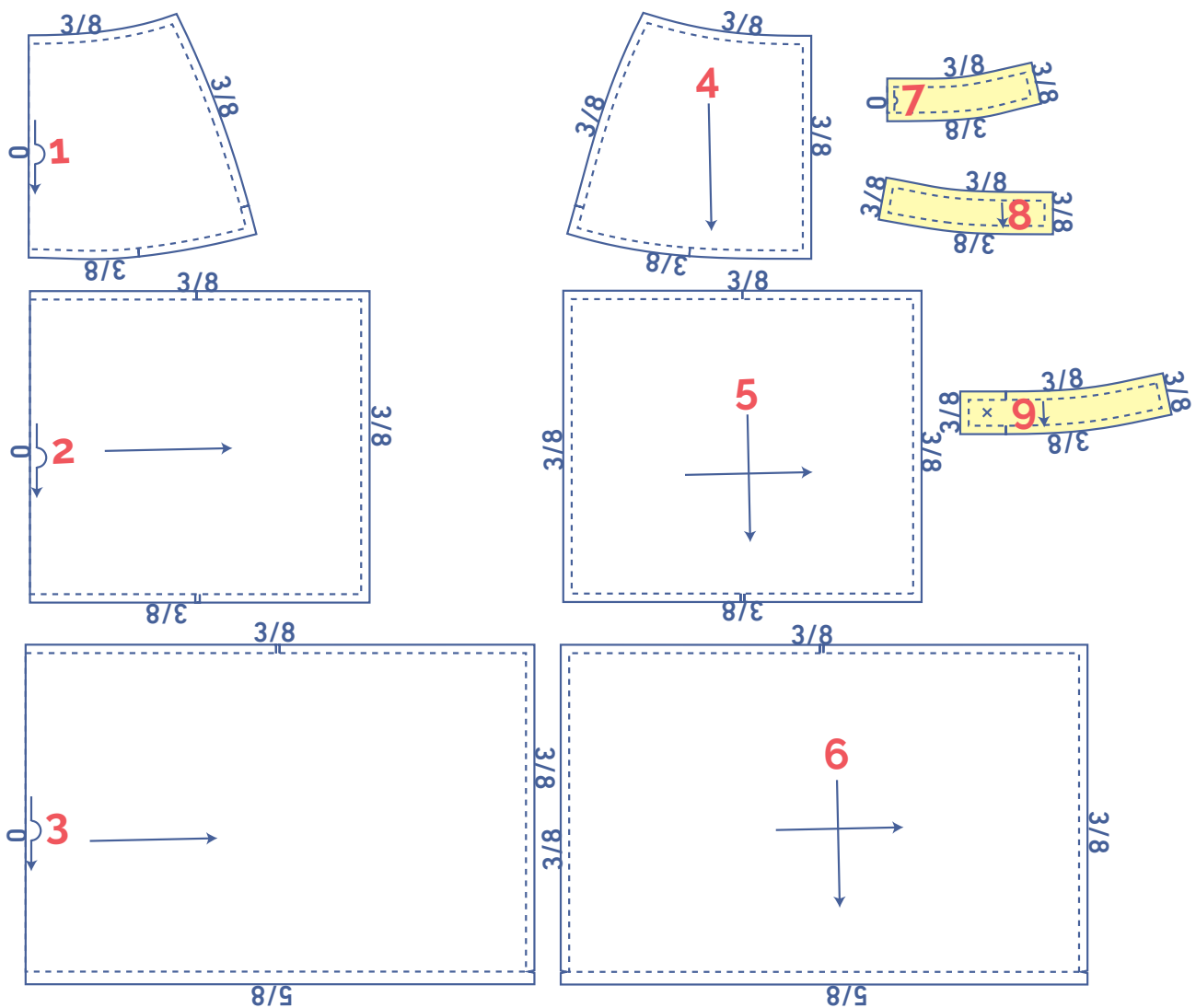
## pattern pieces & seam allowances (in inches)

To sew the garment as described in the instructions, you must draw the illustrated seam allowances around the paper pattern pieces before cutting them out.

1. front: 1x on fabric fold
2. middle flounce front: 1x on fabric fold
3. bottom flounce front: 1x on fabric fold
4. back: 2x
5. middle flounce back: 2x
6. bottom flounce back: 2x
7. waistband front: 2x on fabric fold
8. waistband LB: 2x
9. waistband RB: 2x

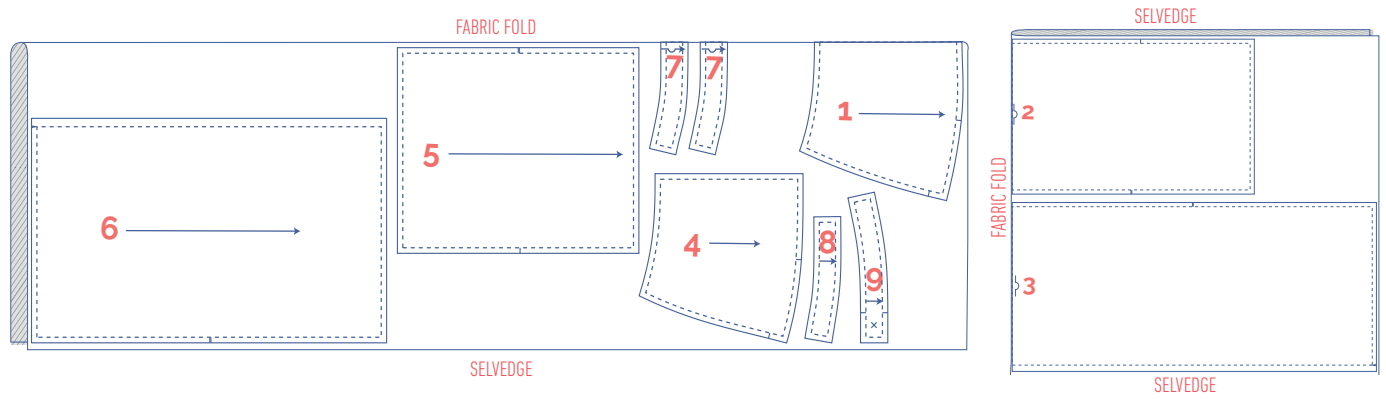
**IMPORTANT**

The pieces highlighted in light yellow have iron-on interfacing attached to the wrong side.

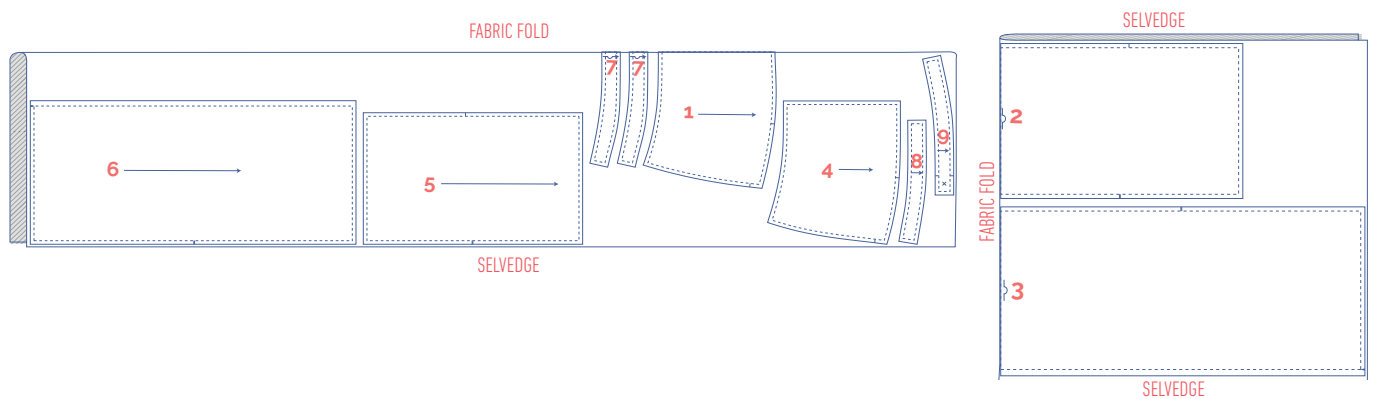


## fabric layout for fabrics 43" wide

0 - 8

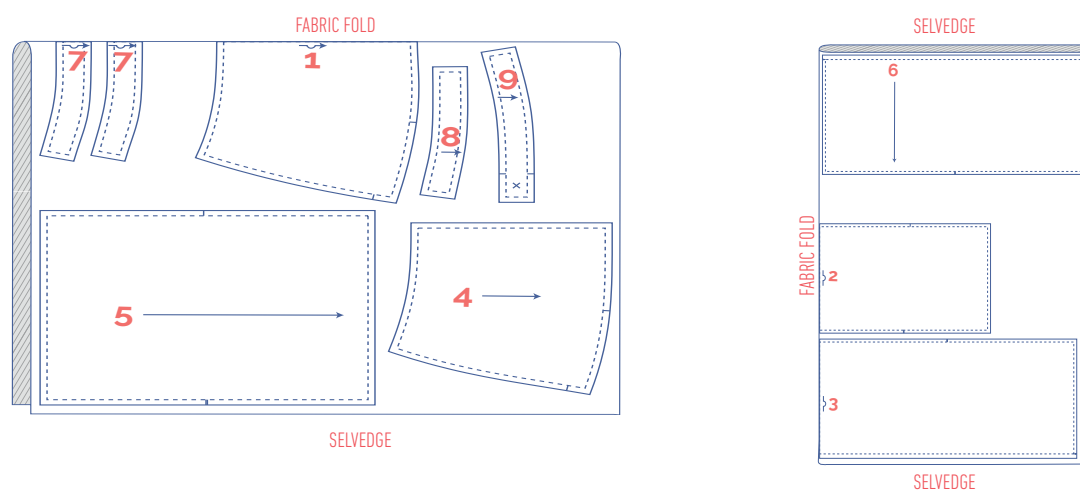


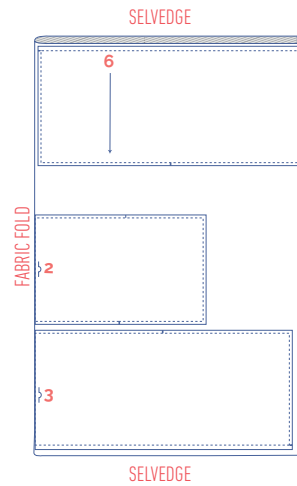
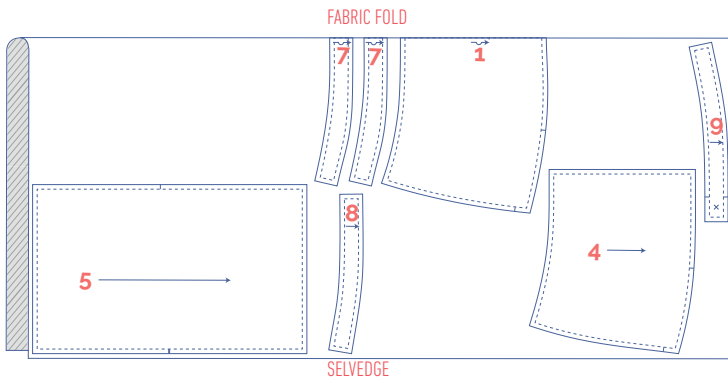
10 - 26



## fabric layout for fabrics 55" wide

0 - 16





- Mark the next points with basting thread:



- Nick the pattern paper and fabric at the places with a single vertical (|) line.
- Cut a small notch out of the fabric at a V notch symbol or on the finished hemline.
- Cut a small notch (V notch) out of the pieces that lie on the fabric fold (↪) to mark the middle of these pieces.

# sewing instructions



The method used to finish the garment will depend on your chosen fabric.

The pieces are always sewn together with right sides facing, unless stated otherwise.

F front

B back

CF centre front

CB centre back

RB right back

LB left back



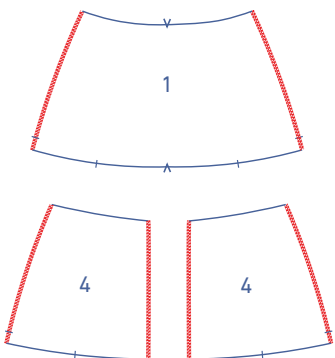
right side



wrong side



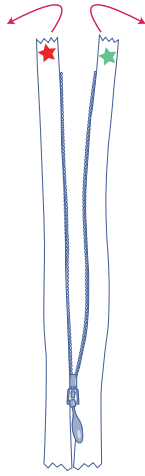
iron-on interfacing



**1**

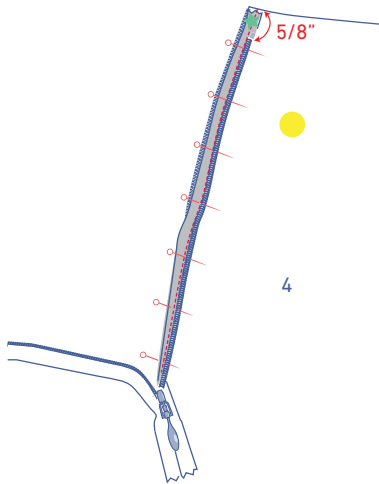
Finish the side seams of the front (1) and the side and CB seams of the back (4) with overlock stitching.



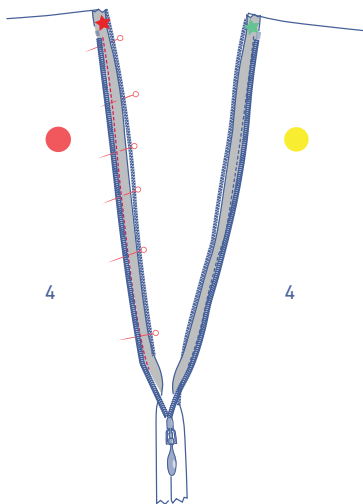


## 2

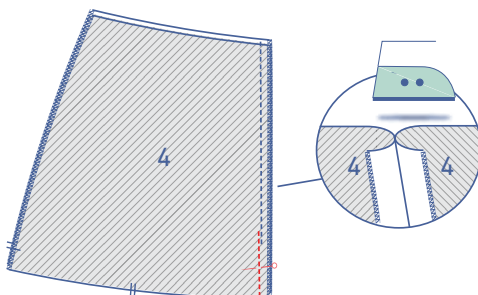
Place the invisible zip in front of you with the right side facing up. Open the zip.



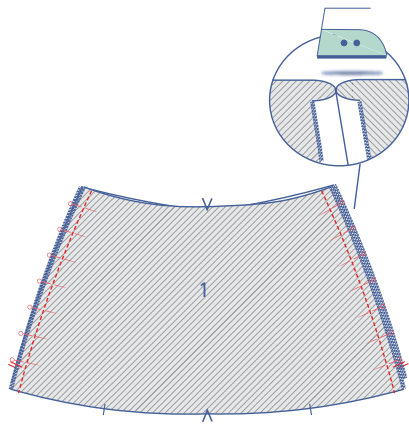
Fold the zip tape marked with the green star to the right and pin it to the RB. The zip tape should align with the edge of the fabric and the zip teeth should start at 5/8" under the raw upper edge. Sew into place with the invisible zipper foot.



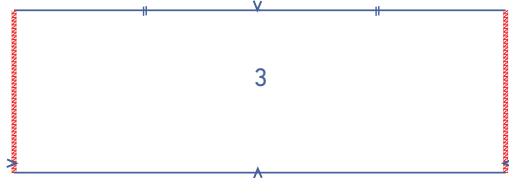
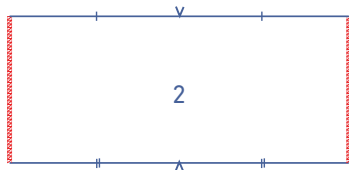
Fold the zip tape marked with the red star to the left and pin it to the LB. The zip tape should line up with the edge of the fabric. The zip teeth start at 5/8" under the raw upper edge. Sew into place with the invisible zipper foot.



Close the zip and sew the rest of the CB seam with the narrow zipper foot. Start sewing a little above and just next to your previous row of stitching (where you finished sewing the zipper). Press open the seam allowance.

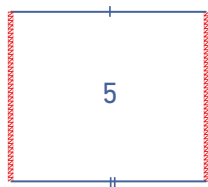


Pin and sew the side seams of the front and back. Press open the seam allowance.

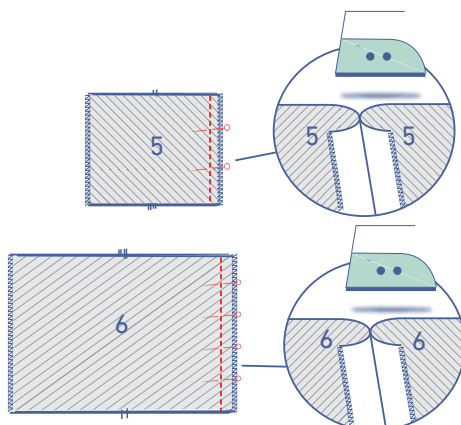
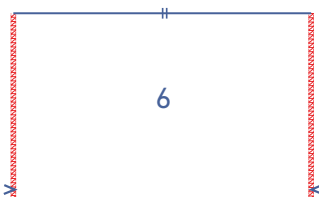


### 3

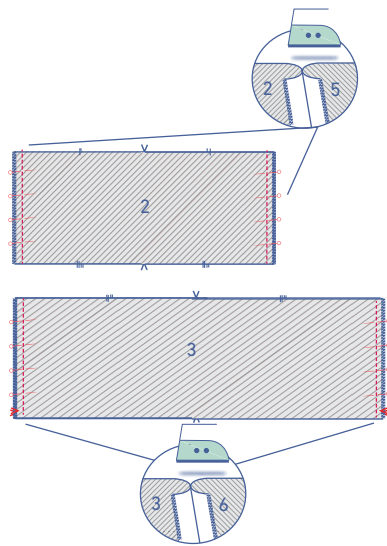
Finish the side seams of the middle flounce front (2) and the bottom flounce front (3) with overlock stitching.



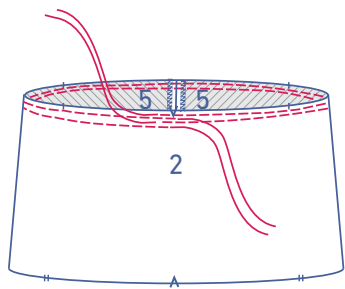
Finish the side and CB seams of the middle flounce back (5) and the bottom flounce back (6) with overlock stitching.



Pin and sew the CB seam of the middle and bottom flounce back pieces together. Press open the seam allowance.

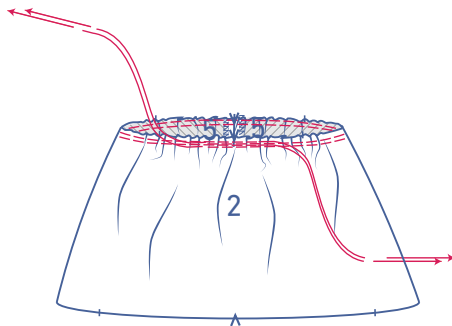


Pin and sew the side seams of the middle and bottom flounces together. Press open the seam allowance.

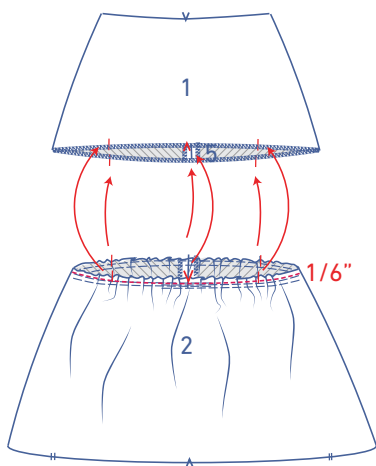


#### 4

Using a long stitch length and at a lower thread tension, sew two parallel rows of stitching along the top of the middle flounce. Do not backstitch at beginning or end.

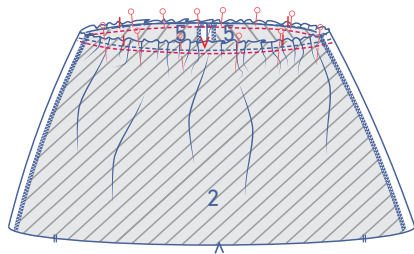


Carefully tug the ends of the threads to pull the fabric into gathers.

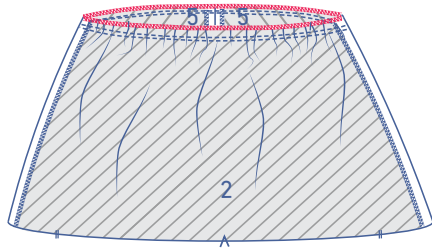


Distribute the gathers until the skirt notches on the middle flounce are neatly aligned with the notches on the front and back.

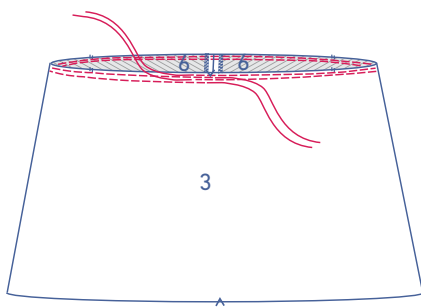
Sew the gathers into place at 1/6" away from the top edge.



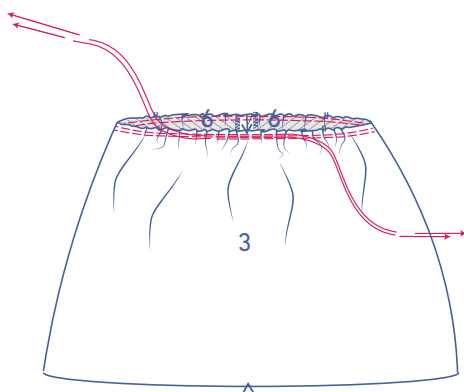
Pin and sew the top of the middle flounce to the bottom of the front and back and remove the gathering threads.



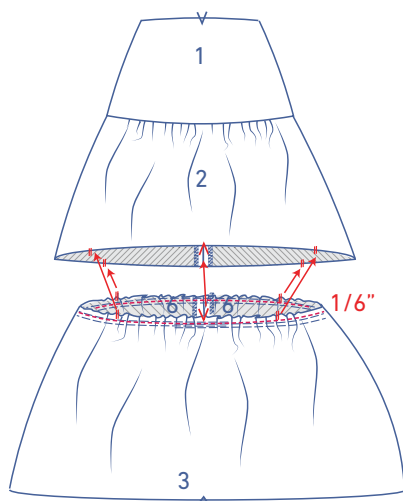
Finish the raw edges together with overlock stitching.



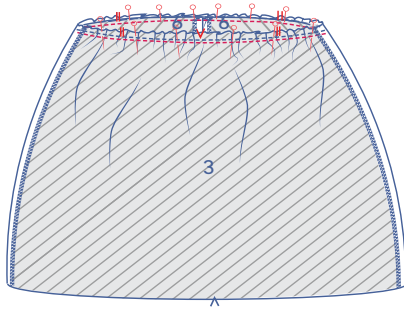
Using a long stitch length and add a lower thread tension to sew two parallel stitches along the top of the bottom flounce. Do not backstitch at beginning or end.



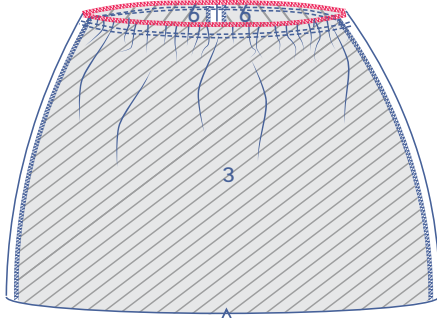
Carefully tug the ends of the threads to gather the fabric into ruffles.



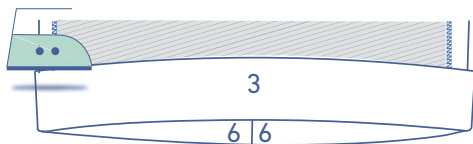
Distribute the gathers until the notches on the bottom flounce match the notches of the middle flounce. Sew the gathers into place at 1/6" away from the top edge.



Pin and sew the top of the bottom flounce to the bottom of the middle flounce and remove the gathering threads.

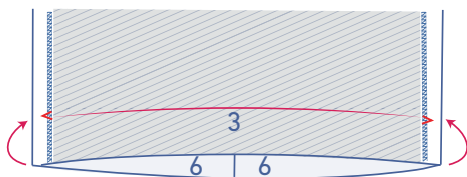
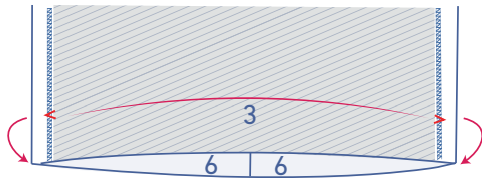


Finish the raw edges together with overlock stitching.

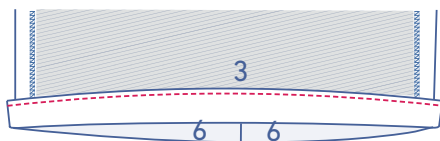
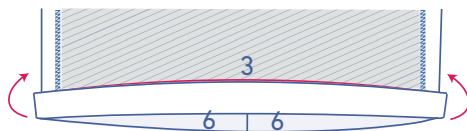


## 5

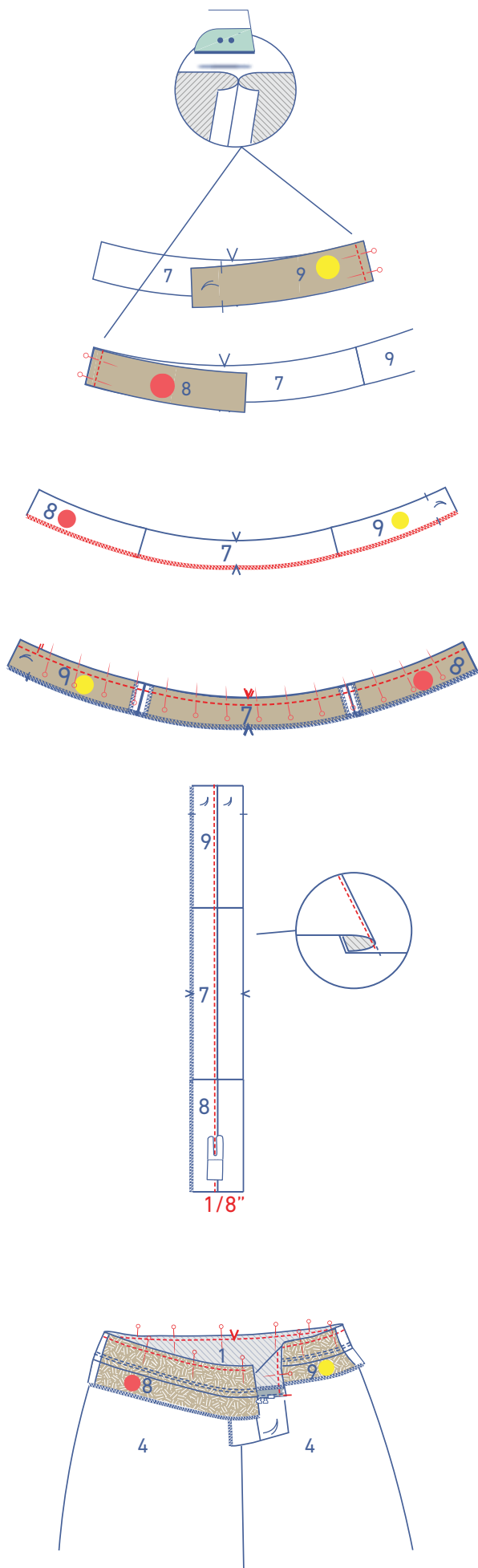
Press the hem allowance of the bottom flounce up at the V notches and open back out.



Bring the raw edge to meet the pressed fold line and then fold a second time along the pressed fold line.



Sew into place right next to the edge.



## 6

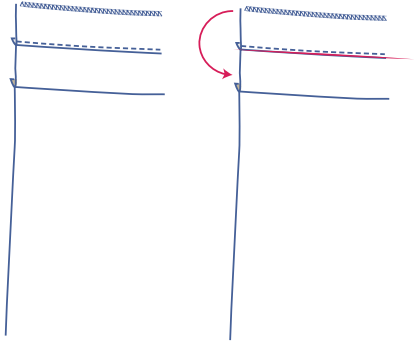
Pin and sew each of the side seams of the waistband front (7), waistband LB (8) and waistband RB (9). Press open the seam allowances.

Finish the bottom of the waistband with overlock stitching, so that the waistband LB (8) is on the left side.

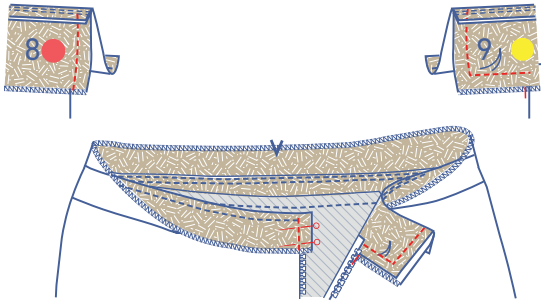
Pin and sew the top of both waistbands with the corresponding nicks matching.

Open the waistbands out so that the right sides of both are facing up and fold the seam allowance over towards the waistband with the overlocked bottom. At 1/8" from the seam, sew through all layers of the waistband with the overlocked bottom.

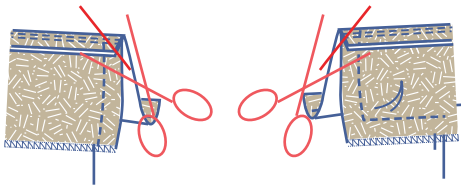
Pin and sew the waistband with the bottom that hasn't been overlocked to the top of the skirt with the corresponding notches matching. The notch on the RB that marks the CB should line up with the zip teeth. There should be 1 cm left of seam allowance on the LB next to the zip teeth.



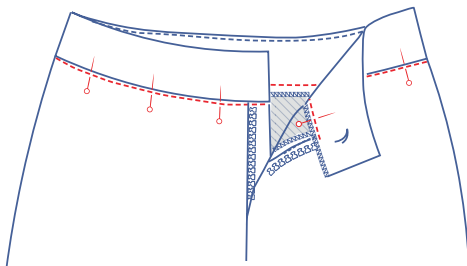
First, open the waistband all the way out. Now, fold it in half back on itself, lengthwise along the seam so that the right sides of both waistbands are facing.



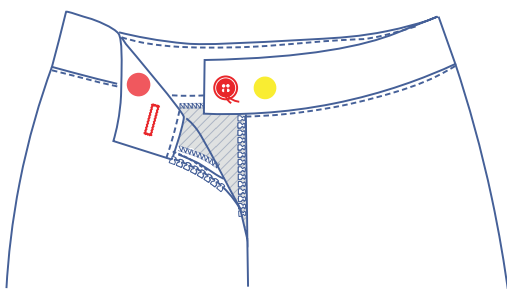
Pin and sew the sides indicated.



Trim the seam allowance at the corners and turn the right way out.



Pin the waistband into place along the right side of the skirt and stitch in the ditch to secure.



**7**

Sew the button on at the indicated place on the RB and make a horizontal buttonhole on the LB that matches the position of the button.