

Hope by Fibre Mood

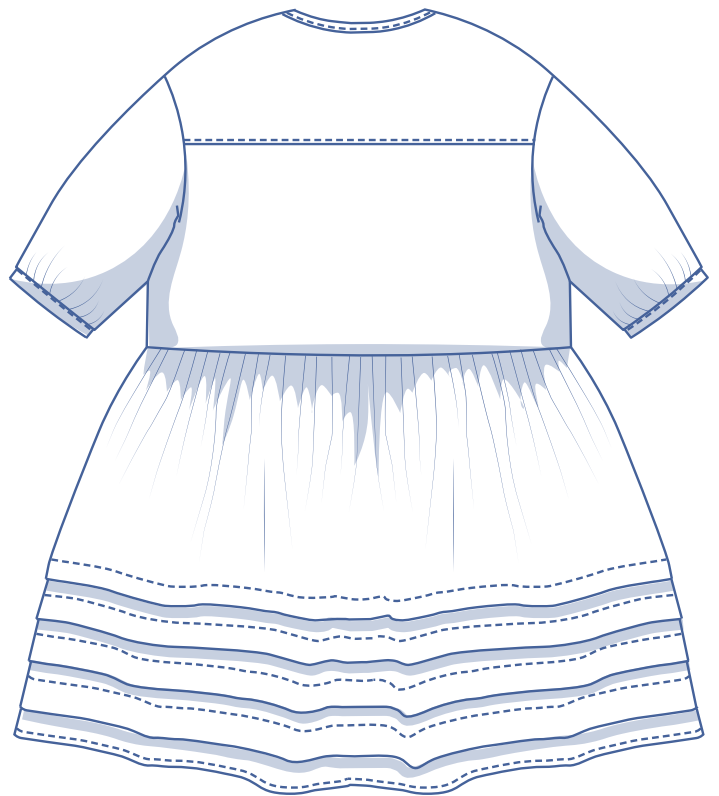


Hope by Fibre Mood



XS - XXXL

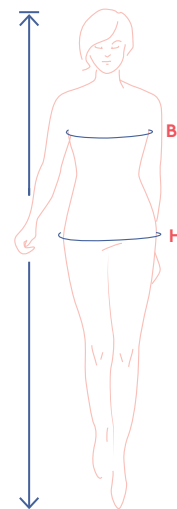
Looking for a new challenge in life? Meet Hope! This pattern has loads of lovely details, a ruffled waist, hem pleats and dropped shoulders. That's quite a shopping list of details, but, this sweet, loose, breezy little dress has plenty of rewards in store.



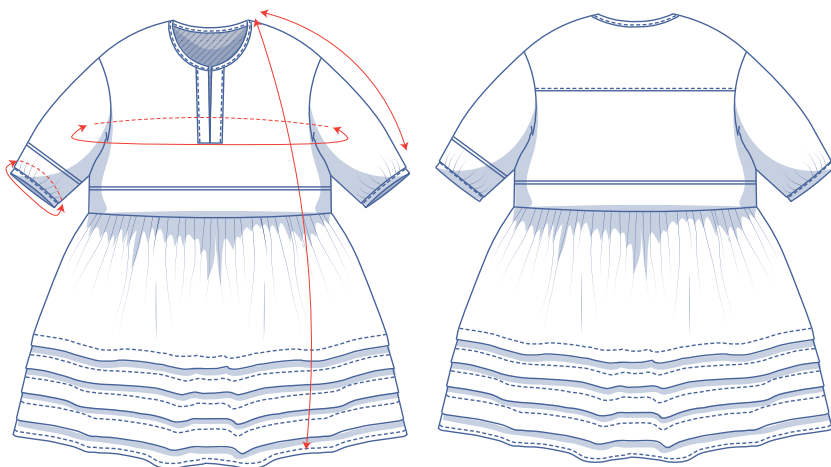
size chart (in cm)

size	XS		S		M		L		XL		XXL		XXXL		
	32	34	36	38	40	42	44	46	48	50	52	54	56	58	60
body height	160	164	166	167	168	169	170	171	172	172	172	172	172	172	172
B (bust)	76	80	84	88	92	96	100	104	110	116	122	128	134	140	146
H (hip)	86	90	94	97	100	103	106	109	115	120	125	130	135	140	145

For this pattern, you should choose the size based on your bust measurement. Pick the size that is the best fit for your bust measurement.



finished garment measurements (in cm)



— shorten or lengthen the pattern here

This chart's measurements are the pattern measurements based on the fabric type and serve as a reference. Ease has been added to the width measurements (in addition to the exact body measurements) for a more comfortable fit. Hope is designed with an oversized cut. Depending on the desired cut, you may decide on a smaller or larger size than the one normally recommended for your measurements.

size	XS	S	M	L	XL	XXL	XXXL
length	97.25	98.5	99.5	101.75	104.25	106.75	108.5
sleeve length*	52.5	53.5	54.5	55.5	56.75	58	59.25
bust	93.75	101.75	109.75	117.75	127.75	139.75	151.75
cuff circumference	30.5	32	33.5	35	36.5	38	39.5

* Including the shoulder length and cuff.

Compare the stated lengths to the measured or desired lengths. **Lengthen** or **shorten** the dress and/or the sleeves by cutting the pattern pieces at the indicated double lines. Then either increase the distance between the cut pieces by the desired amount (to lengthen), or overlap the pieces (to shorten). Make sure that the CF and CB lines and the side seams are always straight.



IMPORTANT

Adjust the amount of fabric to be used based on the alterations.

supplies



- Thread
- Iron-on interfacing: max. 20 cm
- Fabric: see table

fabric		XS	S	M	L	XL	XXL	XXXL
fabric width 110 cm	cm	310	315	320	330	410	435	465
fabric width 140 cm	cm	275	280	285	290	295	330	335

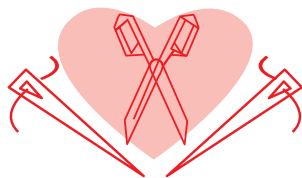
The corresponding fabric layout can be found on page 6 of these sewing instructions.

fabric advice



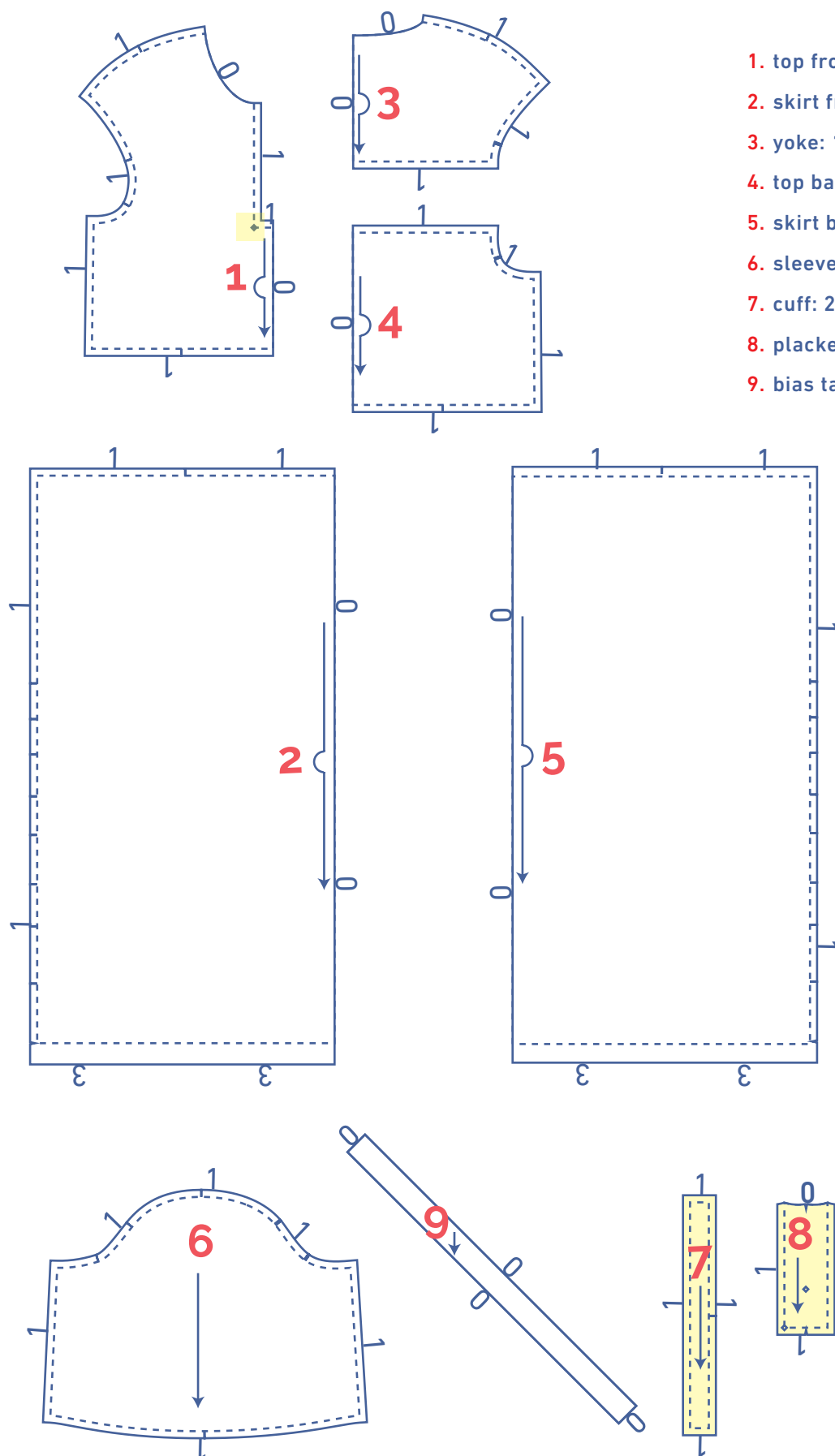
A thin, lightweight fabric is a must for this dress. Top suggestions? Think cotton voile, poplin or a chambray with a fluid drape. To really show off the Hope's charms, go for a solid fabric or one with a delicate print – pinstripes for example.

Proud to be #Sewista



pattern pieces & seam allowances (in cm)




To sew the garment as described in the instructions, you must draw the illustrated seam allowances around the paper pattern pieces before cutting them out.



1. top front: 1x on fabric fold
2. skirt front: 1x on fabric fold
3. yoke: 1x on fabric fold
4. top back: 1x on fabric fold
5. skirt back: 1x on fabric fold
6. sleeve: 2x
7. cuff: 2x
8. placket: 2x
9. bias tape neck: 1x on the bias

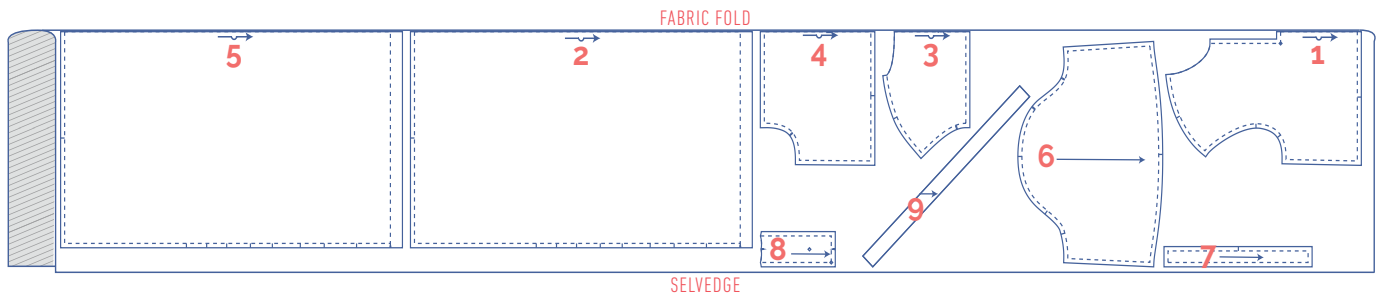
IMPORTANT

The pieces highlighted in light yellow have iron-on interfacing attached to the wrong side.

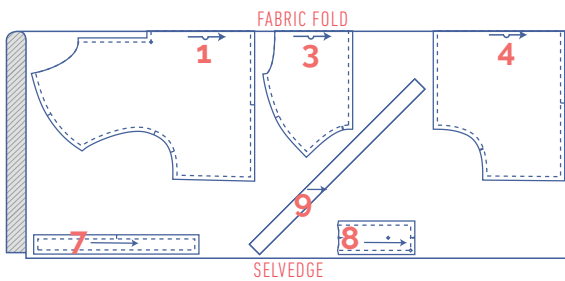
 material type	
	fabric
	iron-on interfacing

fabric layout – solid fabrics
fabric width 110 cm

XS - L

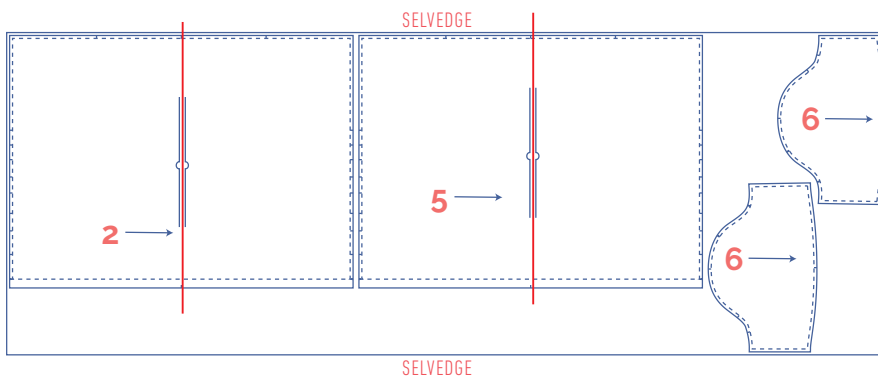


XL - XXXL



IMPORTANT

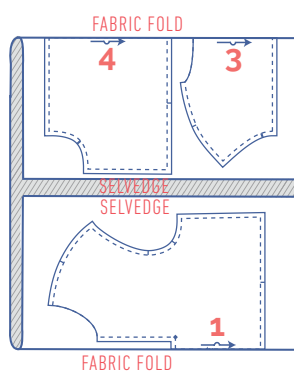
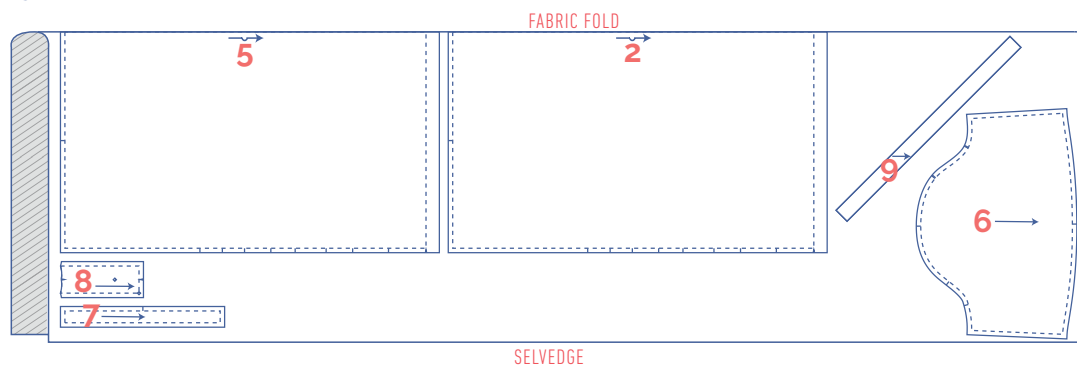
You only need pattern piece 9 once. Pattern pieces 2 and 5 face in a different direction than the top. If you're working with a patterned fabric, you should place all of the pattern pieces in the same direction.



fabric layout – solid fabrics

fabric width 140 cm

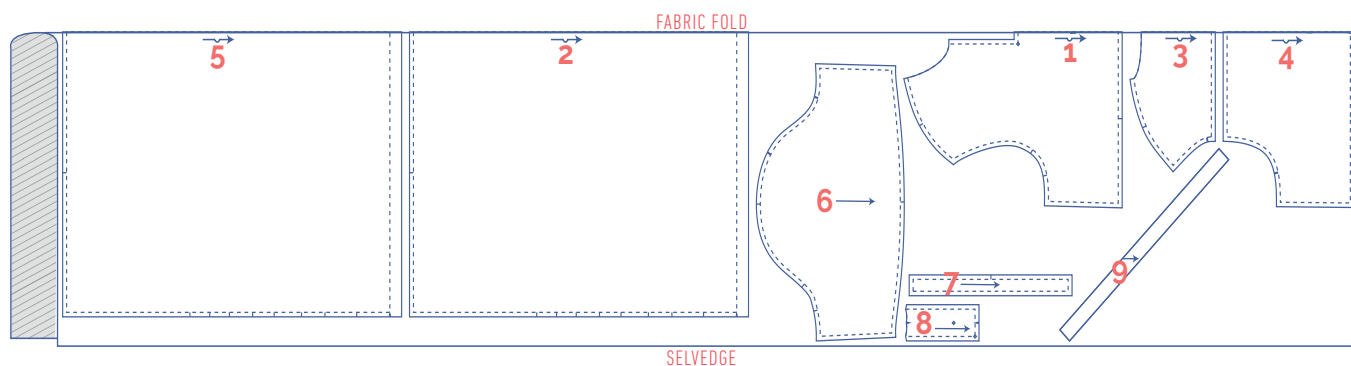
XS - XL



IMPORTANT

You only need pattern piece 9 once.

XXL - XXXL



marking pattern pieces

	notch the pattern paper and fabric at the following points
	single notch
	double notch
V	V notch

	Mark the following points using marking thread.
	centre point
	snap/button

sewing instructions



The method used to finish sewing the garment depends on the fabric used.

The pieces are always sewn together with the right sides of the fabric facing together, unless stated otherwise.

F front

B back

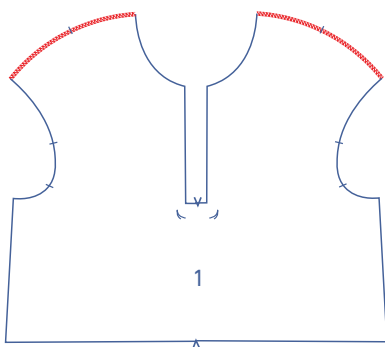
CF centre front

CB centre back

 right side

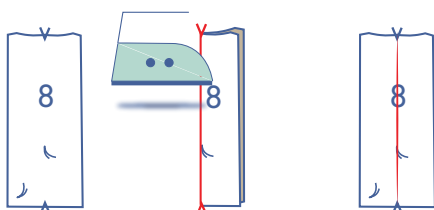
 wrong side

 iron-on interfacing

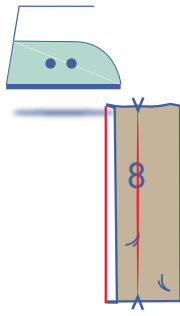


1

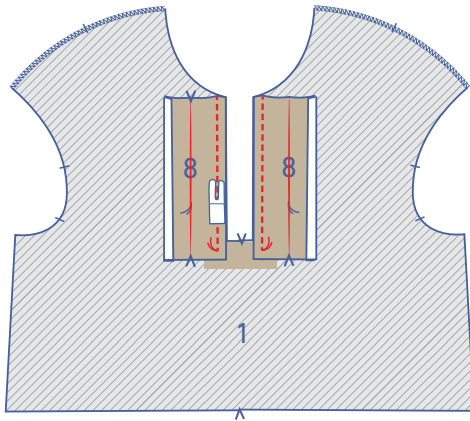
Finish the shoulder seams of the top front (1) with overlock stitching.



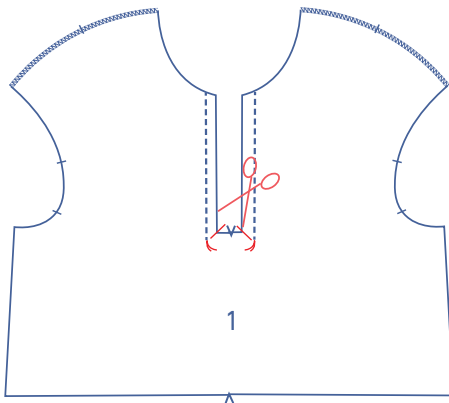
Press the plackets (8) in half lengthwise with the wrong sides together to create a fold line. Open back out again.



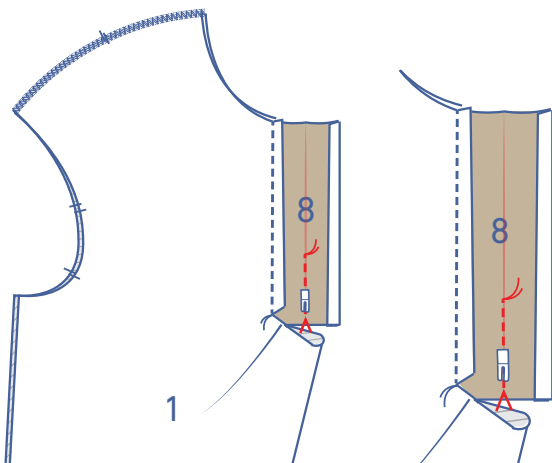
Press the long end of the placket without the marking thread 1 cm onto the wrong side.



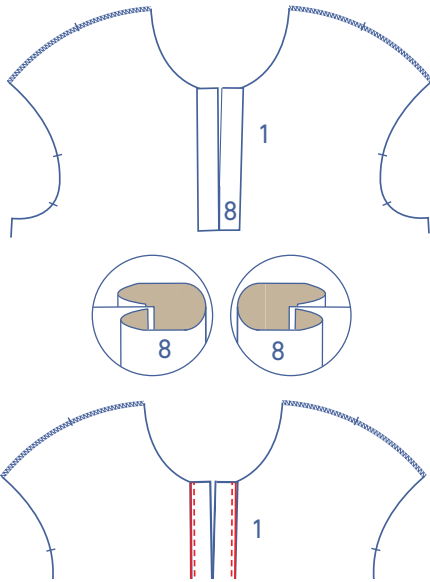
Pin the unpressed raw edge to the wrong side of the front with the corresponding marking threads matching. Sew from the top of the placket down to the marking threads. Repeat this step for the other side.



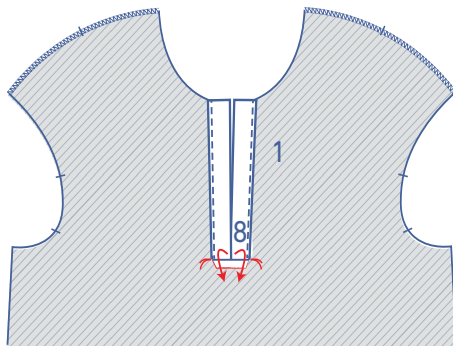
Turn the front over. Snip into the corners as shown at an angle until just before to the marking threads.



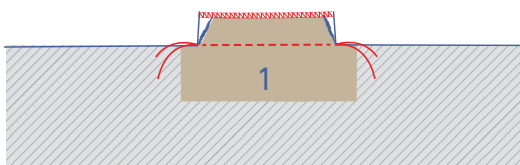
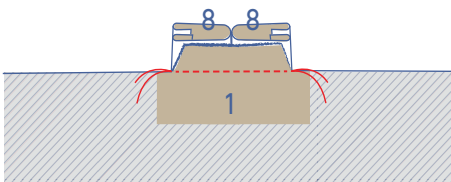
Fold the front in half with the wrong side of the fabric together. Pin the plackets with the right sides facing each other and with the corresponding V notches and fold lines matching. Pin together in the fold line from the marking thread to the bottom of the plackets.



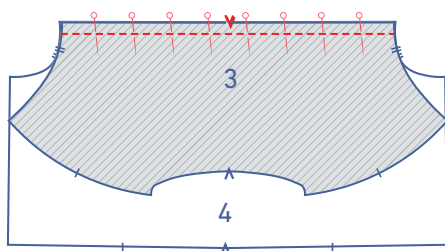
Turn the plackets onto the right side of the front and place the fold line (of the pressed seam allowance) directly over the previous stitching. Sew into place right next to the edge up to the marking thread.



Tuck the shaped seam allowance (of the diagonal notches) of the front under and onto the wrong side. Sew into place from corner to corner (marking thread to marking thread).

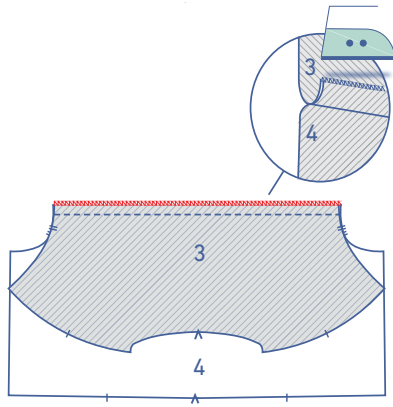


Finish the raw edges of the shaped seam allowance of the front + the raw edges of the plackets together with overlock stitching.

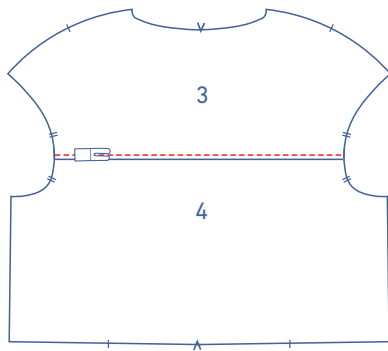


2

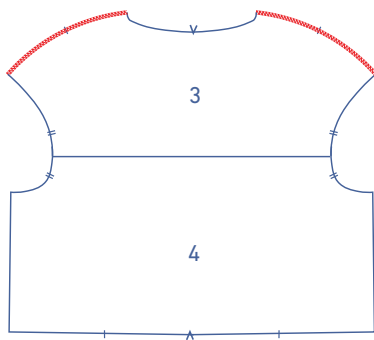
Pin and sew the yoke (3) and the top back (4) together with the right sides together.



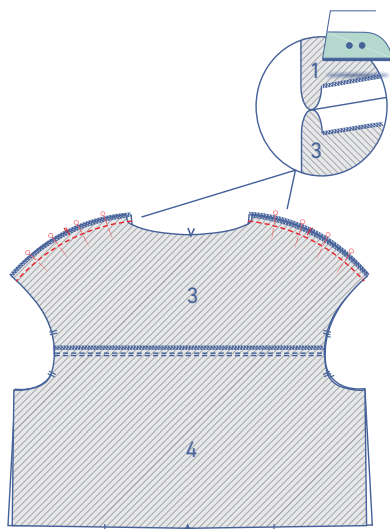
Finish the raw edges together with overlock stitching.
Press the seam allowance towards the yoke.



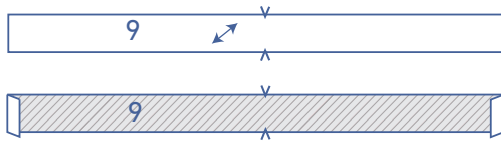
Stitch right next to the seam through all layers (= yoke + underlying seam allowance).



Finish the shoulder seams of the yoke + back with overlock stitching.

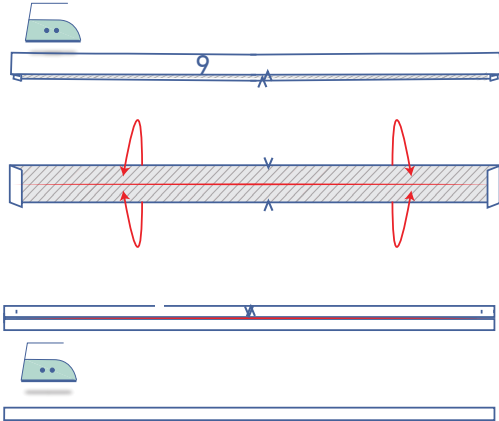


Pin and sew the shoulder seams of the front and back pieces together and press the seam allowance open.



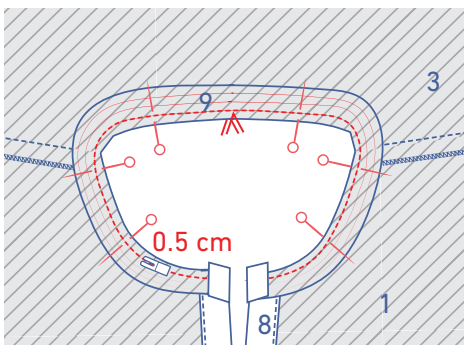
3

Press both short ends of the bias tape neck (9) 1 cm over to the wrong side.



Press the bias tape as follows:

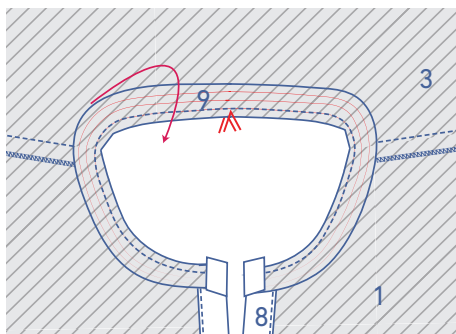
- First in half lengthwise with the wrong sides together. Open back out.
- Press both raw edges in to meet the pressed fold line.
- Fold in half lengthwise again and press.



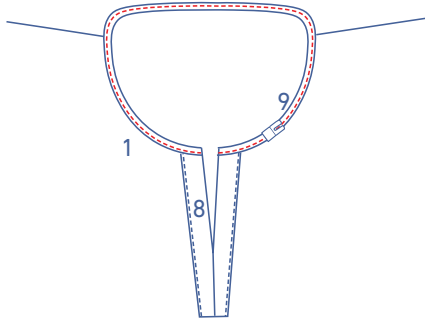
Pin the bias tape to the neckline along the wrong side of the garment with the corresponding notches matching (The right side of the bias tape should be facing the wrong side of the garment.). Sew into place at 0.5 cm.

IMPORTANT

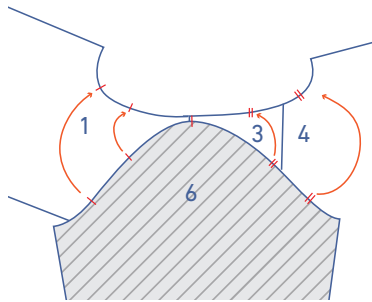
The bias tape lengths are merely indicative because the actual lengths depend on the fabric used. Pin the tape to the CB with the V notches matching and pin the rest of the tape around until you reach the CF, making sure all the while to tug lightly on the tape. (Gently stretching it.) Be sure to add a 1 cm seam on either side of the CF. Trim the excess fabric and fold the 1 cm of seam allowance inwards all the way around.



Fold the bias tape all the way over onto the right side.

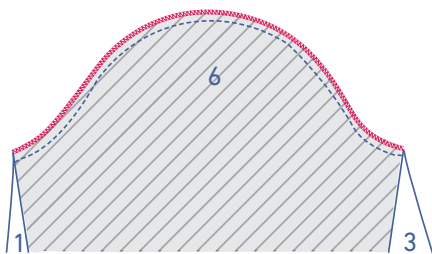
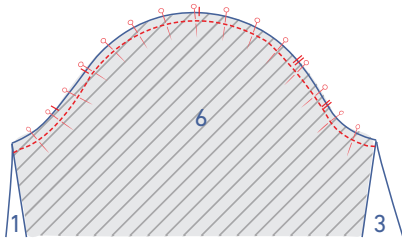


Place the pressed edge over the previous stitching and sew into place right next to the edge.

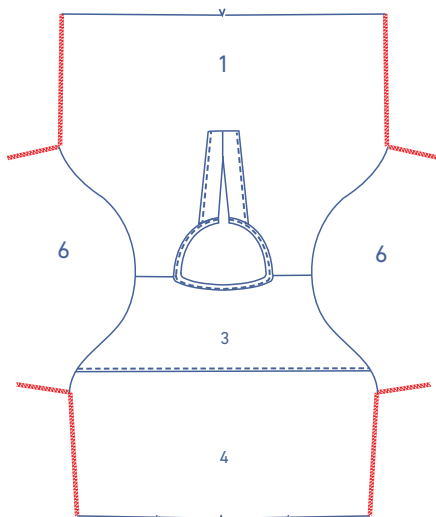


4

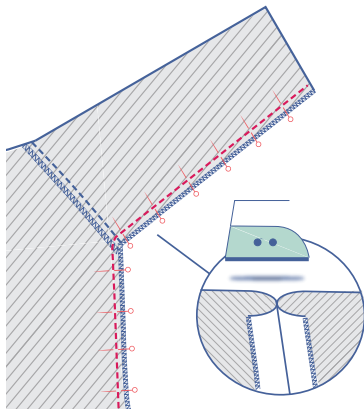
Pin and sew the top of the sleeve (6) (= the sleeve cap) to the armhole with the corresponding markings matching. The single notch marks the front, while the double notches mark the back. The notch at the top of the sleeve head should line up with the shoulder seam.



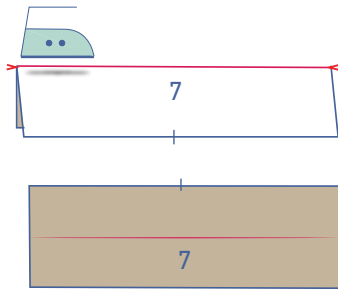
Finish the raw edges together with overlock stitching.



Finish the underarm and side seams with overlock stitching

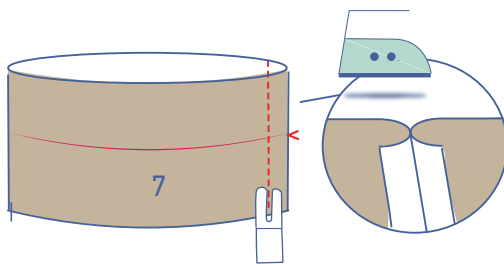


Pin and sew the side and underarm seams together and press the seam allowance open.

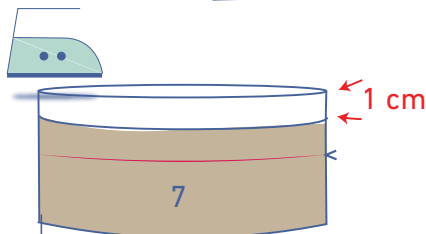


5

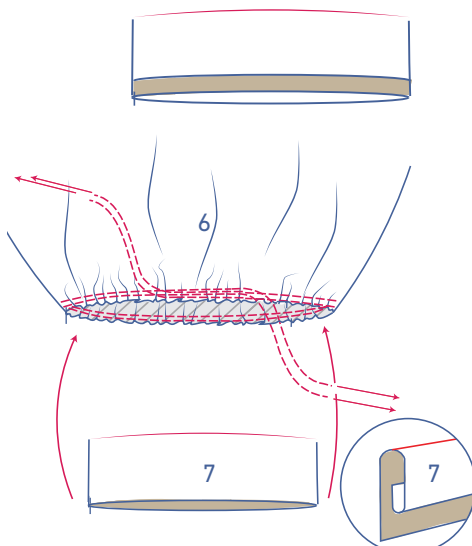
Press the cuff (7) in half lengthwise with the wrong sides together to create a fold line. Open back out.



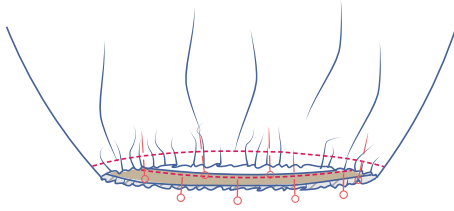
Fold the cuff in half crosswise with the right sides together. Pin and sew the short end and press the seam allowance open.



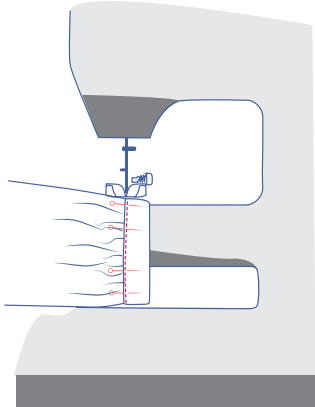
Press the end without the notch 1 cm onto the wrong side.



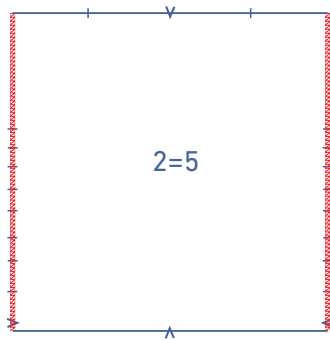
Use a long stitch with a low thread tension to sew 2 parallel lines of stitching along the bottom of the sleeve. Leave the thread tails long. Carefully tug the ends of the gathering threads to gather the fabric into ruffles. The bottom of the sleeve needs to be perfectly aligned with the cuff. Turn the cuff the right way out and slide the cuff into the sleeve.



Pin the unpressed raw edge of the cuff to the bottom of the sleeve along the inside (= the wrong side). Distribute the ruffles evenly. Sew into place. Remove the gathering threads when you're done.

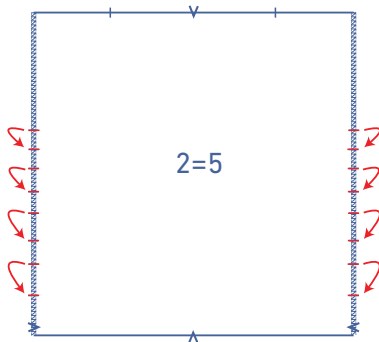


Turn the cuff onto the right side of the sleeve. Place the fold line directly over the previous stitching. Sew into place right next to the edge.

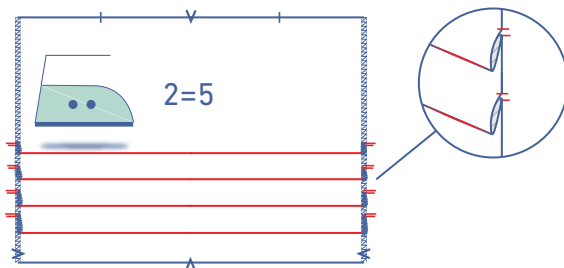


6

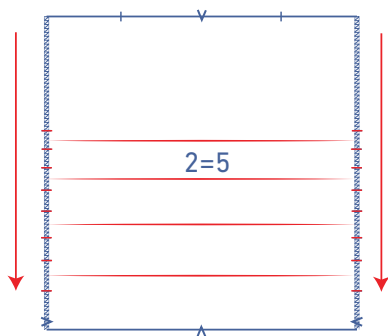
Finish the side seams of the skirt front (2) and skirt back (5) with overlock stitching.



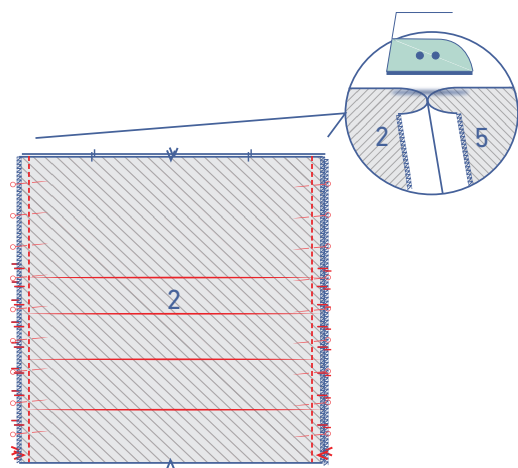
Neatly line up the notches on the sides of the skirt pieces.



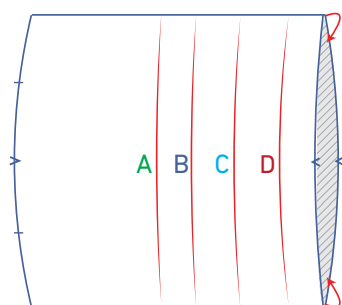
Now, press the pleats on the skirt pieces forward, with the right side of the fabric facing outwards.



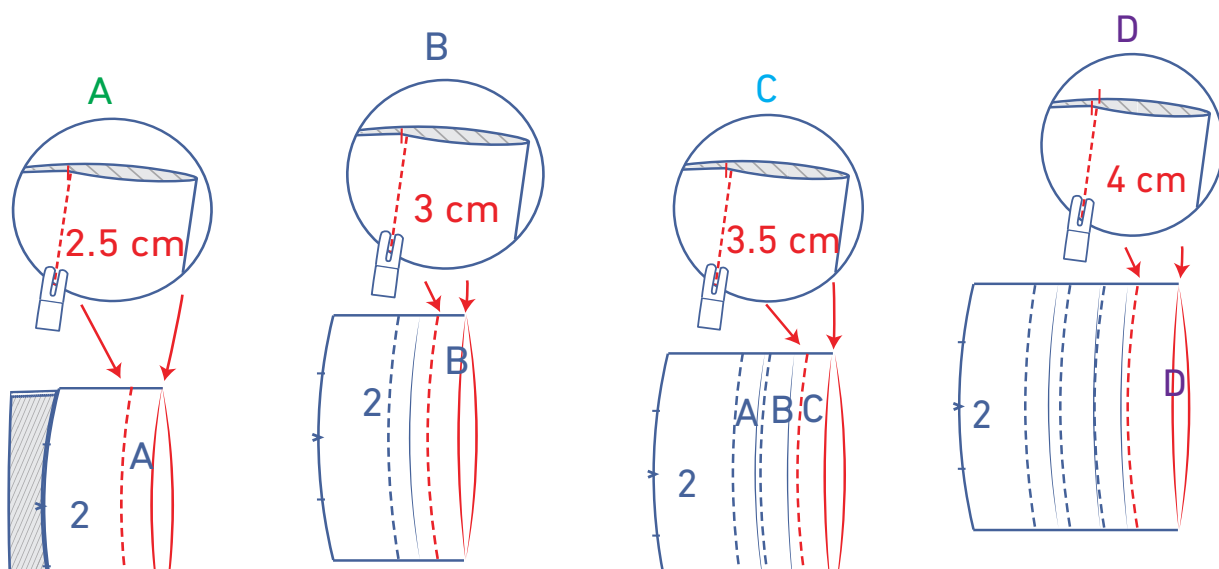
Open back out again.

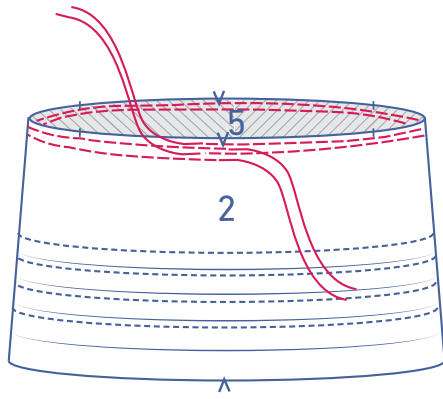


Pin and sew the side seams of the skirt front and skirt back when they are completely flat (= no folds!), with the corresponding notches and fold lines matching. Press the seam allowance open.



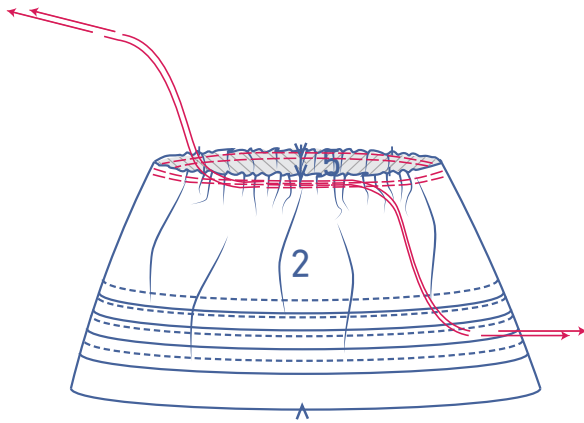
Sew the pleats into place all the way around according to the specified measurements using the folds you pressed before as a guide..



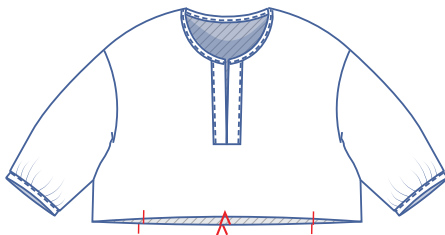


7

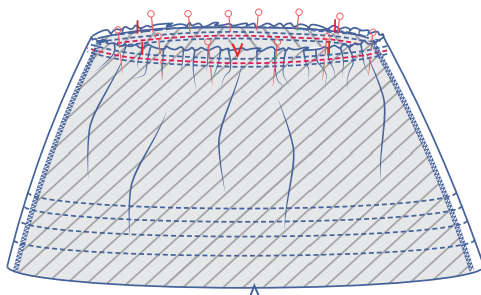
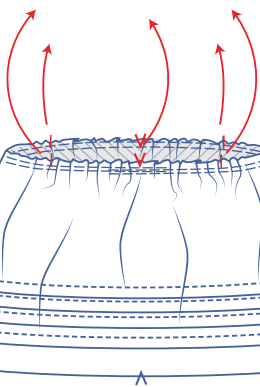
Use a long stitch at a low thread tension to sew 2 parallel rows of stitching at the top of the skirt.



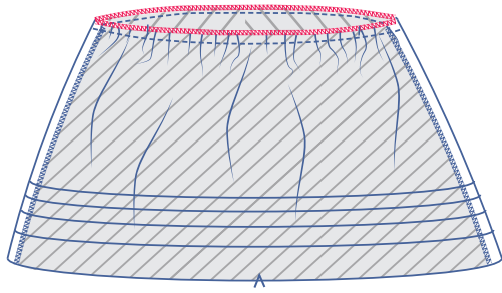
Carefully tug the ends of the gathering threads to gather the fabric into ruffles.



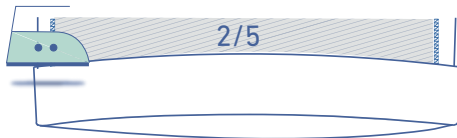
The top of the skirt must line up with the bottom of the top. Pin the skirt to the top, distributing the ruffles evenly so that the corresponding notches perfectly overlap.



Sew into place between the gathering threads. Remove these when you are done.

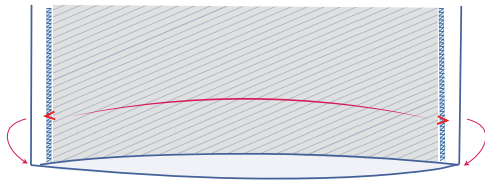


Finish the raw edges together with overlock stitching.

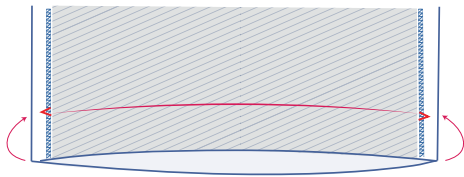


8

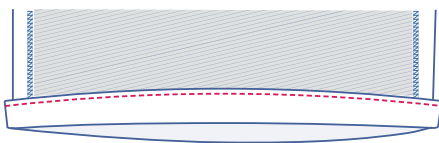
Press the hem allowance over at the V notches.



Open back out again.



Place the raw edge against the pressed fold line and fold back up again.



Sew into place right next to the edge.