

# Ginny by Fibre ⚡ood



# Ginny by Fibre ood



**XS - XXXL**

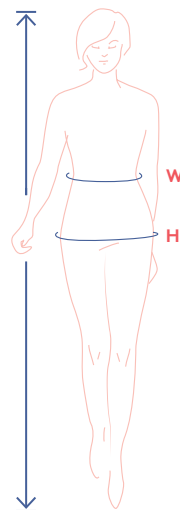
Wide circle skirts are hot! That makes Ginny, with her playful ties, the queen of them all. This pattern is fab in every length – mini, midi, or maxi. The Ginny transforms into something completely new every time you try a different fabric. Seize your chance to freestyle to your heart's content.



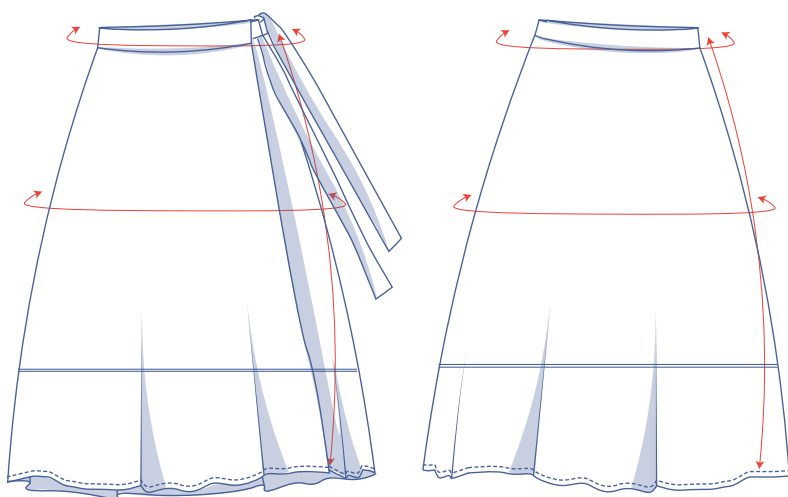
## size chart (in inches)

size	XS		S		M		L		XL		XXL		XXXL		
	0	2	4	6	8	10	12	14	16	18	20	22	24	26	28
body height	5'24"	5'38"	5'45"	5'48"	5'51"	5'54"	5'58"	5'61"	5'64"	5'64"	5'64"	5'64"	5'64"	5'64"	5'64"
W (waist)	26	26.8	27.6	29.1	30.7	32.3	33.1	34.6	37.2	39.8	42.3	44.9	47.4	50	133.5
H (hip)	33.9	35.4	37	38.2	39.4	40.6	41.7	42.9	45.3	47.2	49.2	51.2	53.1	55.1	145

For this pattern, select your size based on your waistline measurement. Pick the size that fits your waistline measurement best. Check the hip measurements on the size chart to make sure there is enough room at the hips.



## finished garment measurements (in inches)



— shorten or lengthen the pattern here

This chart's measurements are the pattern measurements based on the fabric type (= jersey) and serve as a reference. The waistline measurement is somewhat smaller than the exact waistline measurement due to the fabric's stretch factor. To make the waistline a little roomier, you can wrap the skirt less tightly and shift the location of the snap.

Compare the stated lengths to the measured or desired lengths. **Lengthen** or **shorten** the skirt by cutting the pattern pieces at the indicated double lines. Then either increase the distance between the cut pieces by the desired amount (to lengthen), or overlap the pieces (to shorten). Make sure that the CF and CB lines and the side seams are always straight.

size	XS	S	M	L	XL	XXL	XXXL
side length*	31.4	31.5	31.6	31.7	31.8	31.9	32.1
waistline	25.7	27.3	30.5	32.9	37.1	42.2	47.3
hips	39.7	42.1	44.4	46.8	50.3	55.1	59.8

\* Including the waistband.

### IMPORTANT

Adjust the amount of fabric to be used based on the alterations.



## supplies



- Thread
- Iron-on interfacing: max.  $\frac{2}{3}$  yd
- Snap (Ø 13/16"): 1
- Fabric: see table

fabric		XS	S	M	L	XL	XXL	XXXL
fabric width 43"	yd	2 ½	2 ½	2 ¾	2 ¾	3	3 ¼	3 ½
fabric width 55"	yd	2	2	2	2 ¼	2 ½	2 ¾	2 ¾

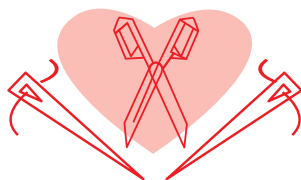
The corresponding fabric layout can be found on page 6 of these sewing instructions.

## fabric advice



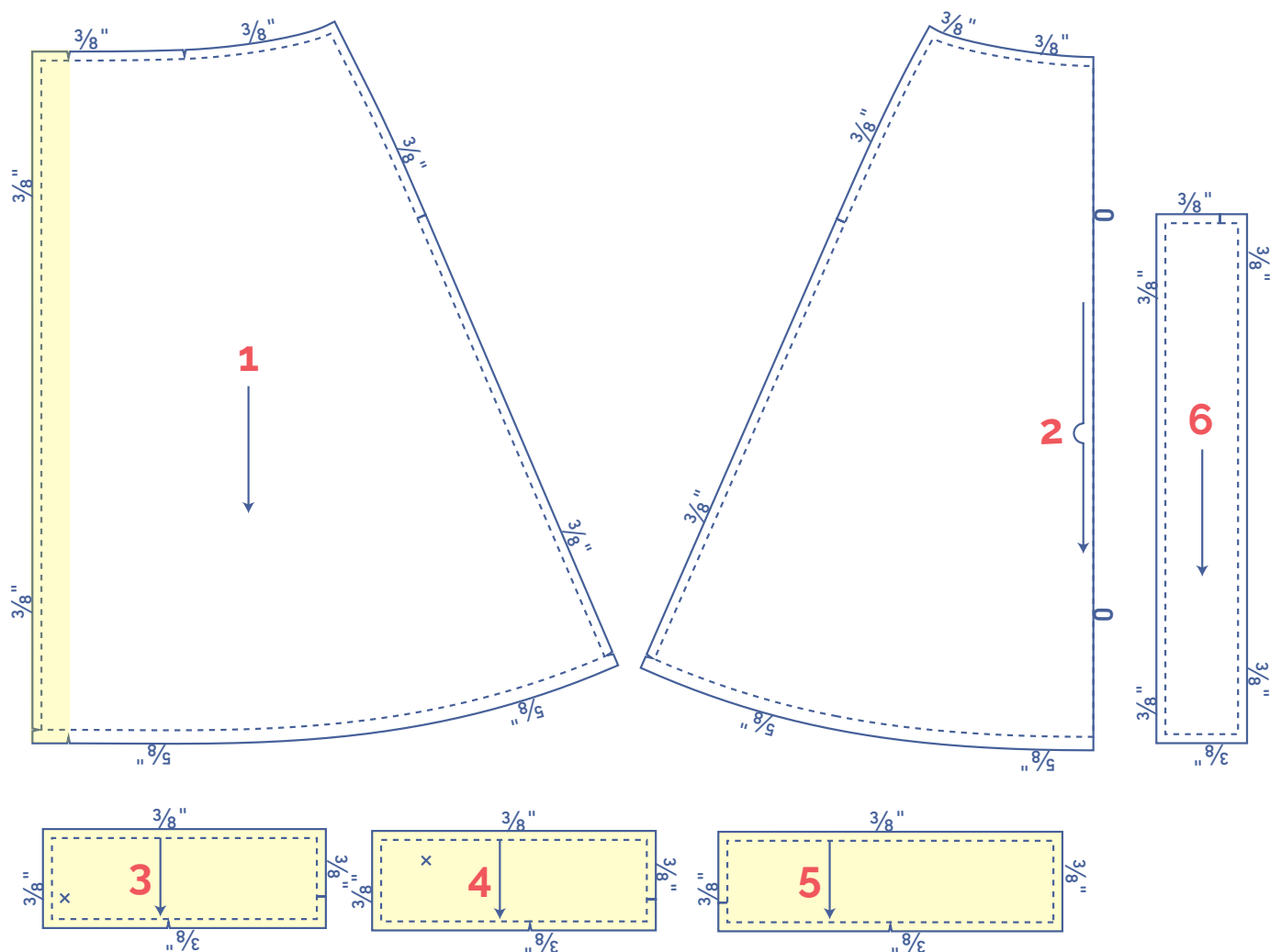
You can make a Ginny out of almost any fabric! Both wovens and knits will work well. Our suggestions: Suede, satin, a viscose fabric with fluid drape and a delicate print, soft faux leather, interlock, French terry or a fine knit - its all possible. The temptation to keep making more Ginnys is nearly impossible to resist.

# Proud to be #Sewista



## pattern pieces & seam allowances (in inches)

To sew the garment as described in the instructions, you must draw the illustrated seam allowances around the paper pattern pieces before cutting them out.



1. front: 2x
2. back: 1x on fabric fold
3. LF waistband: 1x
4. RF waistband: 1x
5. waistband back: 1x
6. tie: 2x

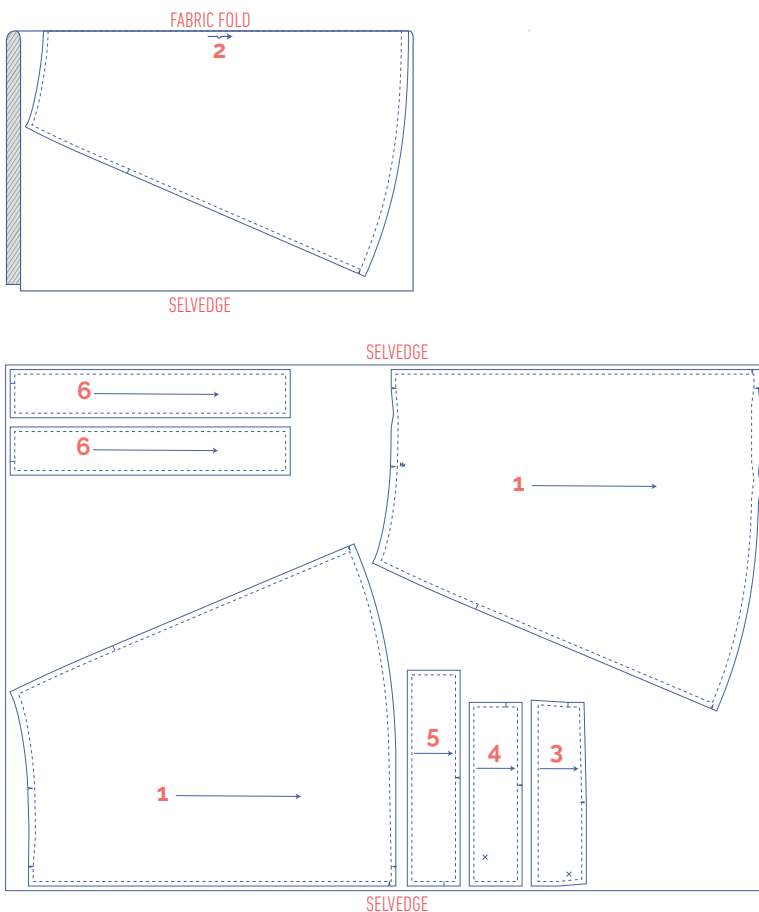
**IMPORTANT**

The pieces highlighted in light yellow have iron-on interfacing attached to the wrong side.

?	material type
	fabric
	iron-on interfacing

## fabric layout – solid fabrics fabric width 43"

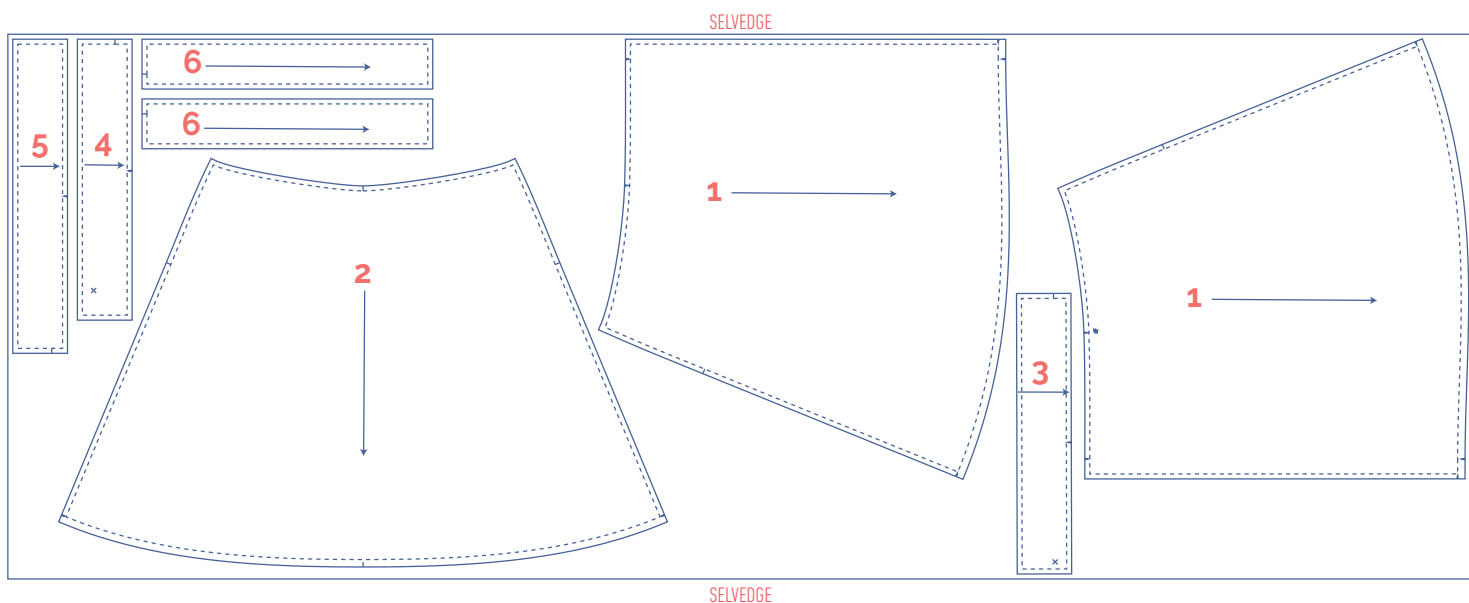
XS - L



### IMPORTANT

Pattern pieces 3, 4 and 5 are only needed once.

XL - XXXL

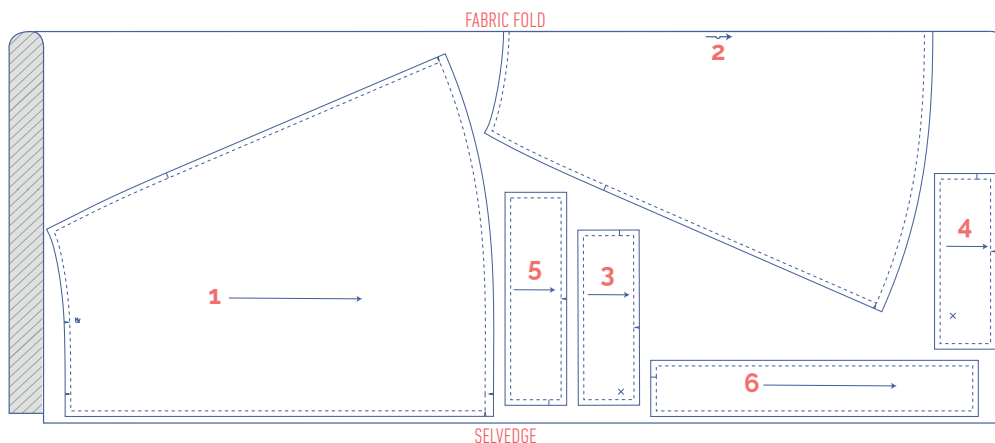


### IMPORTANT

Pattern pieces 3, 4 and 5 are only needed once. Pattern piece 2 is on a different bias than pattern piece 1 to economise fabric use. However, if you're using patterned fabric, pieces 1 and 2 should be laid in the same direction.

## fabric layout – solid fabrics fabric width 55"

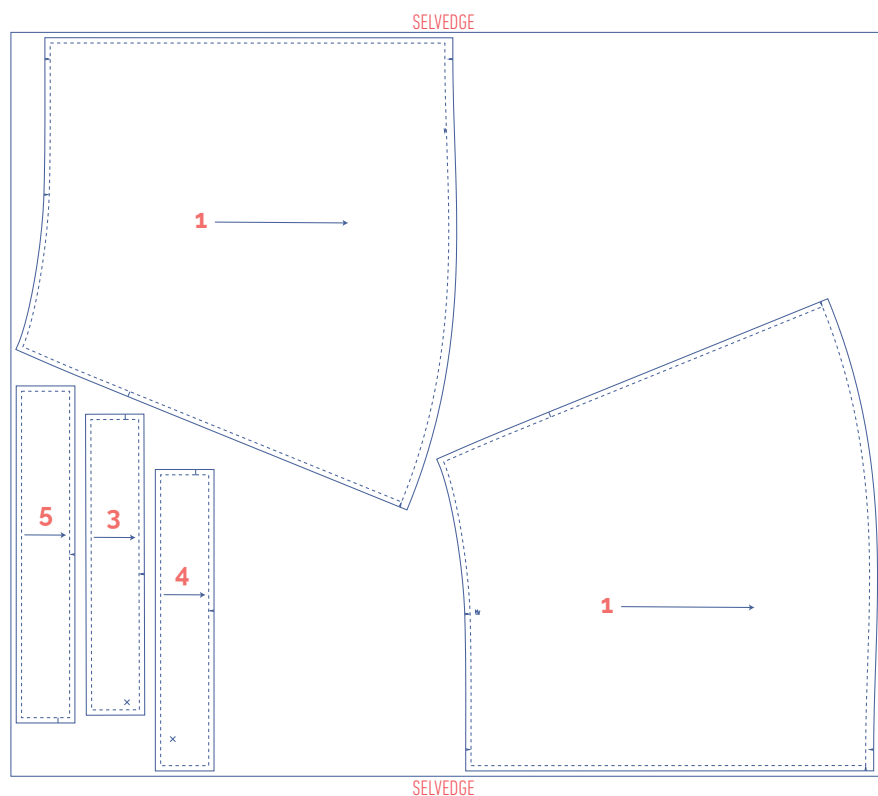
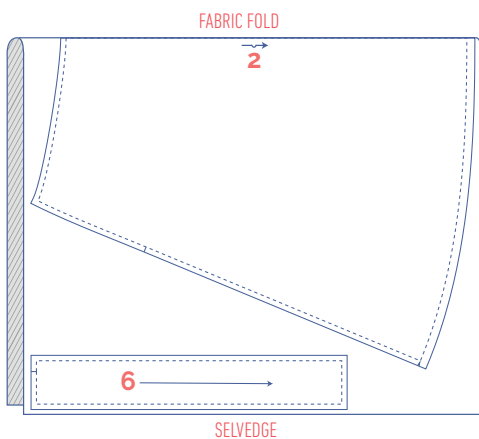
**XS - S**




### IMPORTANT


Pattern pieces 3, 4 and 5 are only needed once.

**M - XXXL**



## marking pattern pieces

	notch the pattern paper and fabric at the following points
	single notch
	double notch
V	V notch

	mark the following points using marking thread
	centre point
	snap/button

### IMPORTANT

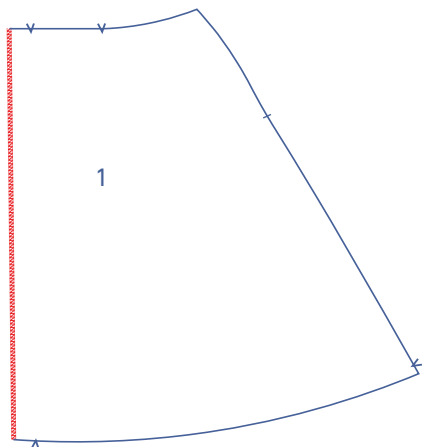
Pattern pieces 3, 4 and 5 are only needed once.

# sewing instructions



The method used to finish sewing the garment depends on the fabric used. The pieces are always sewn together with the right sides of the fabric facing together, unless stated otherwise.

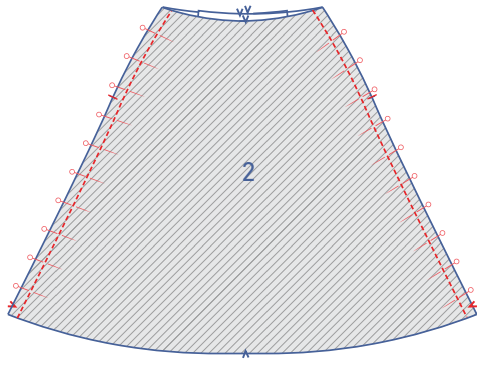
F	front	
B	back	
RF	right front	
LF	left front	
CF	centre front	
CB	centre back	
RB	right back	
LB	left back	
	right side	
	wrong side	
	iron-on interfacing	



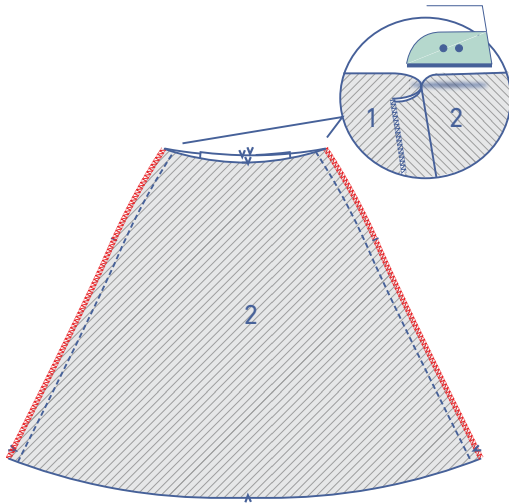
**1**

Finish the raw edge of the interfaced side of the front pieces (1) with overlock stitching.

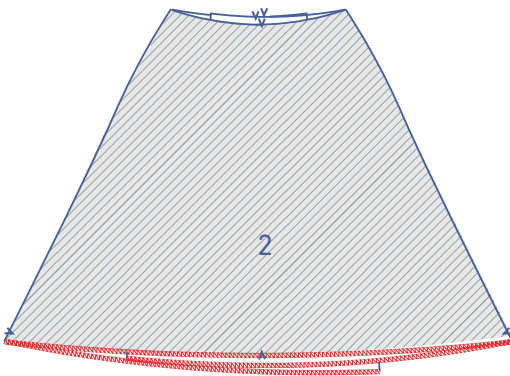




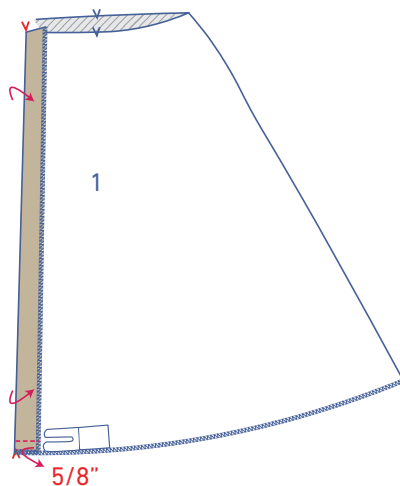
Pin and sew the side seams into place.



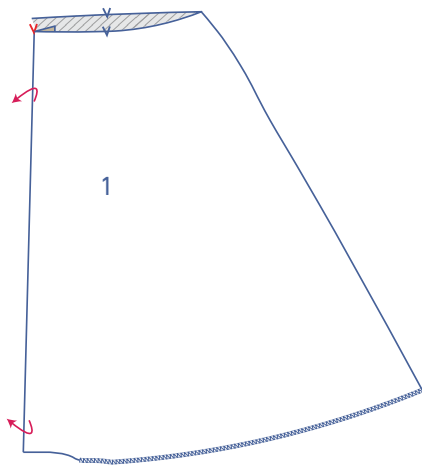
Finish the raw edges together with overlock stitching and press the seam allowance towards the front.



Finish the hem with overlock stitching.



Press the interfaced section (facing) of the CF onto the right side at the V notches on the top and bottom. Sew the hem horizontally into place at 5/8" from the raw edge.



Turn the interfaced section (facing) back onto the wrong side.

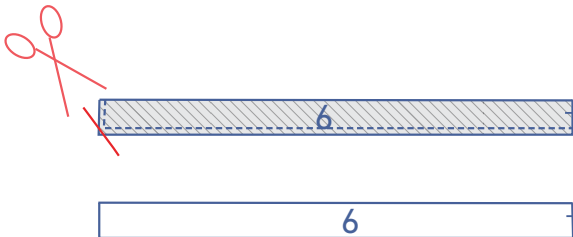


## 2

Fold the ties (6) in half lengthwise with the right sides together.



Sew the unmarked short end and the long side.

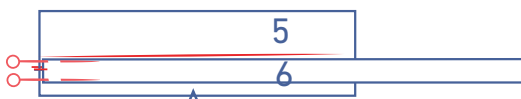
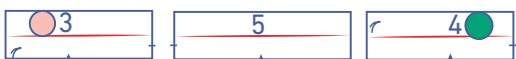


Trim the corner and turn the right way out.

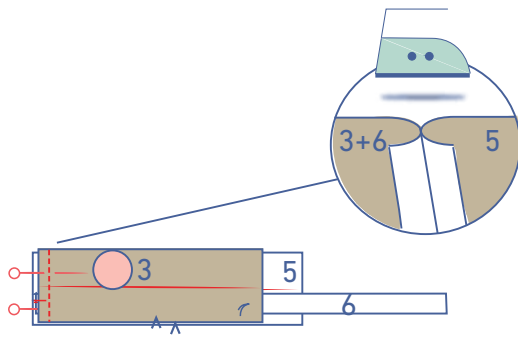


## 3

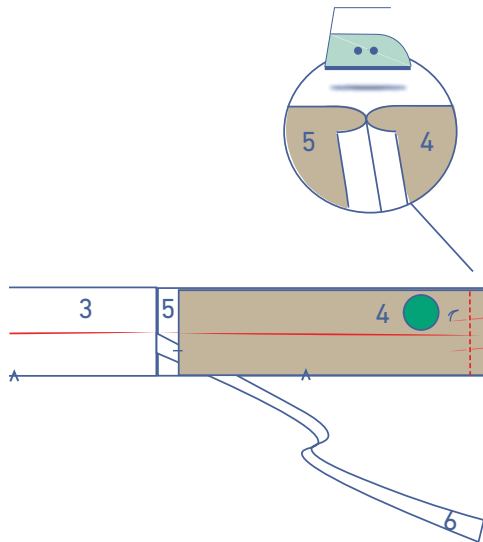
Press each of the waistband LF (3), waistband RF (4) and waistband back (5) pieces in half lengthwise to create a fold line. Open back out.



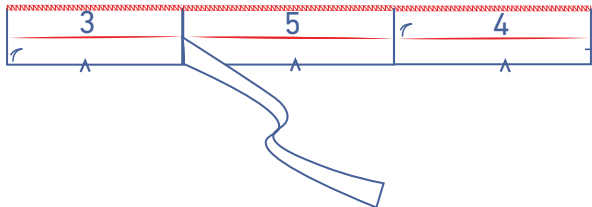
Pin the unfinished end (= marked short end) of one of the ties to the waistband back with the corresponding notches matching.



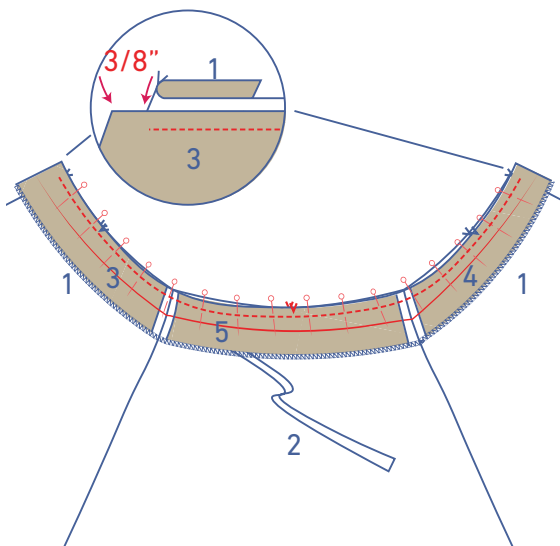
Place the waistband LF on top of the waistband back + tie, matching the notches. Pin and sew, then press the seam allowance open.



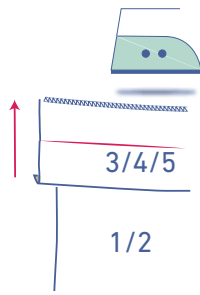
Pin and sew the waistband RF with the unmarked short end to the unmarked end of the waistband back.



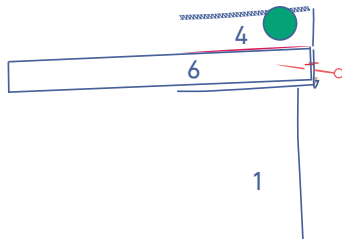
Finish the indicated long side of the waistband with overlock stitching.



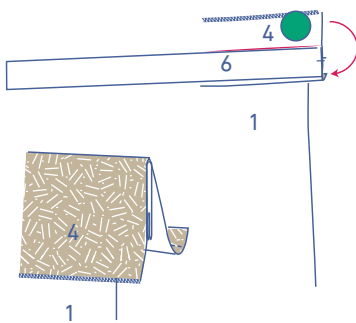
Pin and sew the waistband with the long side that hasn't been overlocked to the top of the skirt with the corresponding V notches matching. The waistband should be longer than the skirt by 3/8" on both ends of the waistband.



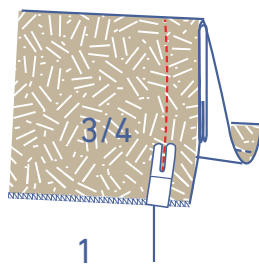
Fold or press the waistband up.



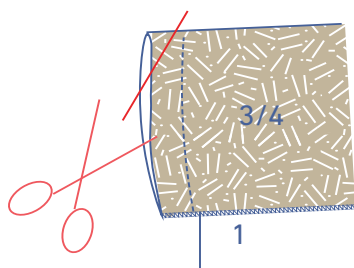
Pin the second tie with the corresponding single notches to the waistband RF.



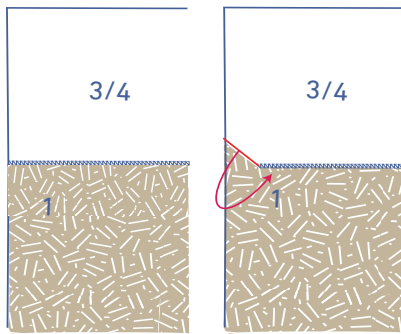
Next, fold the waistband in half lengthwise at the pressed fold line with the right side facing inwards.



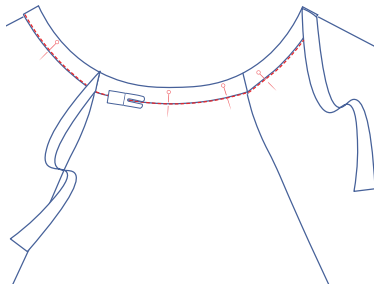
Sew both short ends to the waistband.



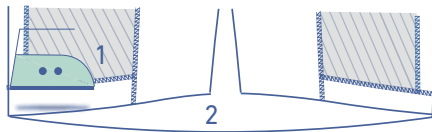
Trim the seam allowance at the corners and turn the right way out.



Lay the waistband at the wrong side neatly flat. Fold a small corner over at each of the waistband's edges so that the seam allowance isn't visible on the right side.

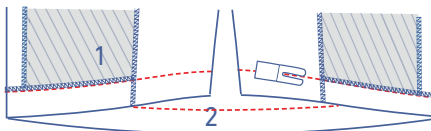


Pin the waistband into place along the right side of the skirt and stitch in the ditch.

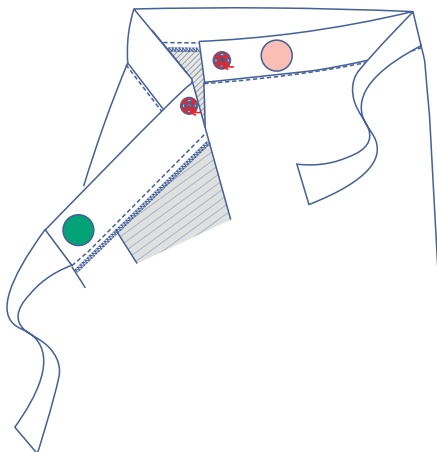


**4**

Press the seam hem over at the V notches.



Sew into place at the overlock stitching.



**5**

Attach the snap where indicated.