

Emilia by Fibre ⚡ood

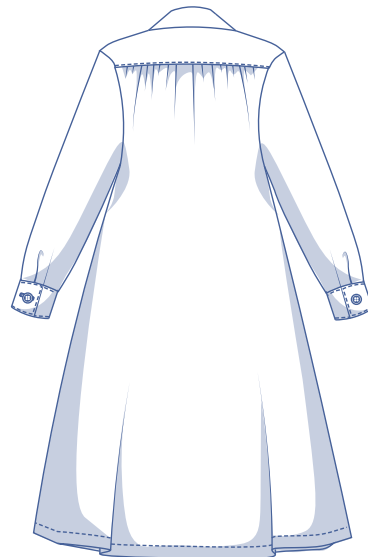
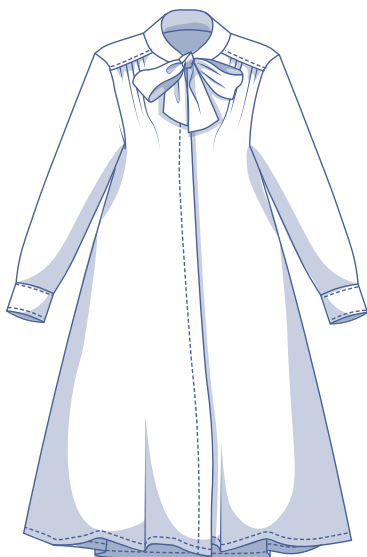
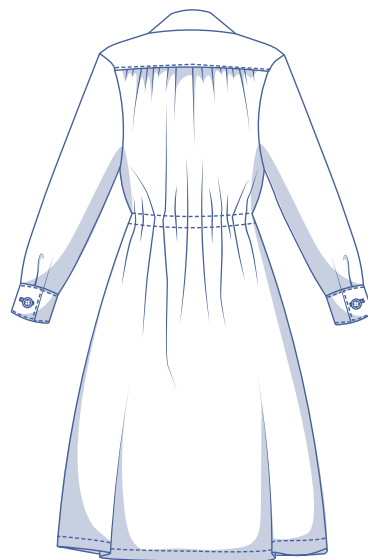
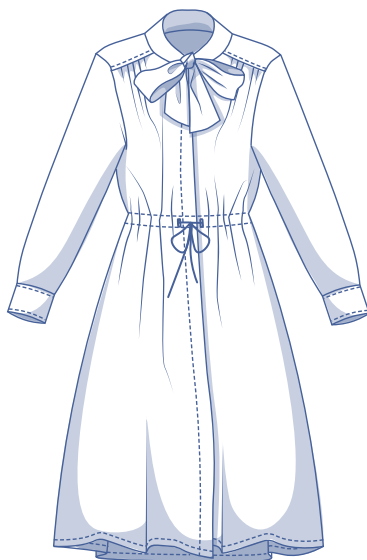


Emila by Fibre Mood



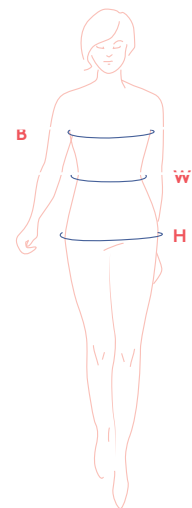
0 - 26

The Emilia dress is a fun and flirty shirt dress with a standing collar and classic pussy bow. It sits at calf-length with subtle pleats at the front and back. Make Emilia up in a luxurious silk for the festive season or go casual with cotton for the everyday. Style it loose and relaxed or cinched in at the waist with the elasticated ribbon tie.



size chart

size (US)	0	2	4	6	8	10	12	14	16	18	20	22	24	26
B (inches)	29.9	31.5	33.1	34.6	36.2	37.8	39.4	40.9	43.3	45.7	48	50.4	52.8	55.1
W (inches)	26	26.8	27.6	29.1	30.7	32.3	33.1	34.6	37.2	39.8	42.3	44.9	47.4	50
H (inches)	33.9	35.4	37	38.2	39.4	40.6	41.7	42.9	45.3	47.2	49.2	51.2	53.1	55.1



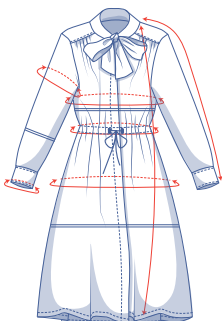
Bust (B): measure horizontally around the fullest part of the bust.

Waist (W): measure horizontally at the narrowest point of the waist.

Hip (H): measure horizontally around the widest part of the lower body.

Choose your size based on your bust measurement. If your hips are wider than the corresponding hip measurements in the size chart, look at the chart below with hip measurements to see whether there is enough room at the hips or if the hip measurements will need to be altered. It's easy to do. When tracing the pattern, merge the line of the original size with the one that suits you best.

finished garment measurements (in inches)



This chart's measurements are based on the fabric type and serve as a reference. For a more comfortable fit and to achieve a particular cut (fitted, loose or oversized), ease has been added to the width measurements (in addition to the exact body measurements). Depending on the fit you want, you could choose to size up or down accordingly.

size	0	2	4	6	8	10	12	14	16	18	20	22	24	26
length	45.25	45.50	45.75	46	46.25	46.50	47.50	47.75	49	49.50	49.75	50	50.50	50.75
sleeve length*	28.50	28.75	28.75	28.75	29	29.25	29.25	29.25	29.50	29.75	29.75	30	30	30.25
bust**	45.25	47	48.75	50.50	52.50	54.25	56	57.75	60.50	63.25	65.75	68.50	71.25	74
waistline***	35	35.75	36.50	38.25	39.75	41.25	42	43.50	46.25	48.75	51.25	53.75	56.50	59
hips	49.25	51	52.75	54.25	55.50	57	58.25	59.75	62	64.25	66.50	68.75	71	73.50
upper arm circumference	12	12.50	12.75	13.25	13.75	14	14.50	15	16.50	17	17.50	18.25	19	19.50
wrist trim circumference****	8.25	8.50	8.75	8.75	9	9.25	9.50	9.75	10	10.25	10.50	10.75	11	11.50

** Including the shoulder length and wrist trim.

** Including the ruffle allowance.

*** With elastic.

**** Excluding 0.8" at base.

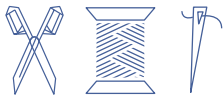
Compare the stated lengths to the measured or desired lengths. **Lengthen** or **shorten** the dress and/or the sleeves by cutting the pattern pieces at the place(s) indicated with double lines on the illustration and then spreading the pattern pieces out X inches from each other or overlapping them where needed. Make sure that the CF and CB lines and the side seams are always straight.



IMPORTANT

Adjust the amount of fabric to be used based on the alterations.

supplies



- Thread
- Iron-on interfacing: 0.50 yd
- Buttons (Ø 3/8"): 12
- Elastic (width 1/2"): see table (optional)
- Fabric: see table

elastic (in yards)	0	2	4	6	8	10	12	14	16	18	20	22	24	26
length	0.56	0.58	0.60	0.65	0.69	0.73	0.75	0.80	0.87	0.94	1.01	1.08	1.15	1.22

fabric used (in yards) standard	0	2	4	6	8	10	12	14	16	18	20	22	24	26
fabric width 55"	2 3/4	3	3	3 1/4	3 1/2	3 1/2	3 1/2	4	4 1/4	4 1/4	4 1/4	4 1/2	4 1/2	4 1/2

The corresponding fabric layout can be found on the last page of these sewing instructions.

fabric advice



If you're on quest for the perfect party dress, make the Emilia in a luxurious fabric with a fluid drape like crepe or satin. Turn the 'demure' bow into something flirtatious with a busy print (think floral or 'snakeskin'). To make a real statement, choose a cotton fabric with body and leave the casing and tie out. Options galore!

sewing instructions



The method used to finish the garment will depend on your chosen fabric. The pieces are always sewn together with right sides facing, unless stated otherwise.

F front

B back

RF right front



LF left front



CF centre front

CB centre back



right side



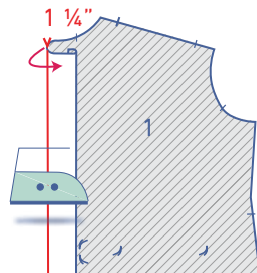
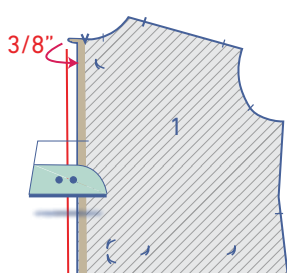
wrong side



iron-on interfacing

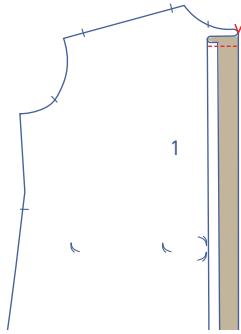


elastic band

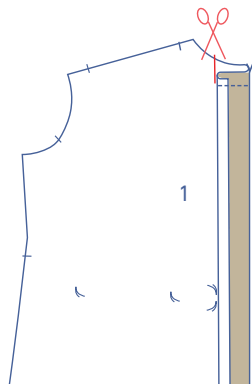


1

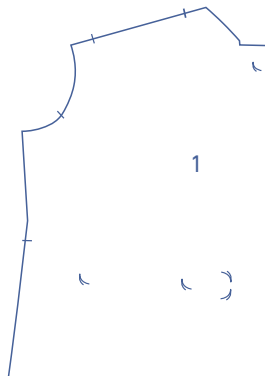
First, press the self-facing of the front (1) $\frac{3}{8}$ " over to the wrong side. Press again a further $1 \frac{1}{4}$ " over at the notches along the top and bottom.



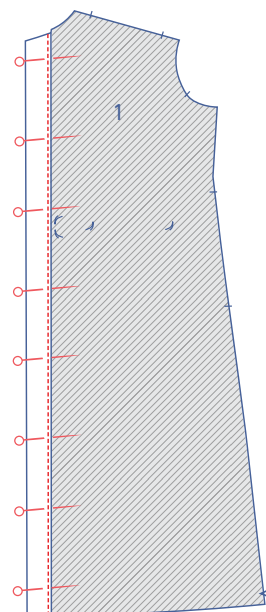
Fold the self-facing at the V notch back over onto itself at the right side. Sew the self-facing in place at the top edge.



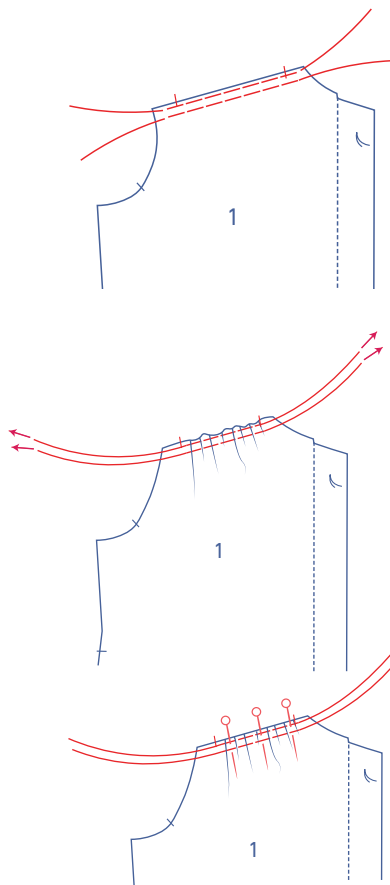
Snip a straight line into the seam allowance of the neck until just before the stitching.



Turn the self-facing back over to the wrong side.



Sew into place right next to the edge.

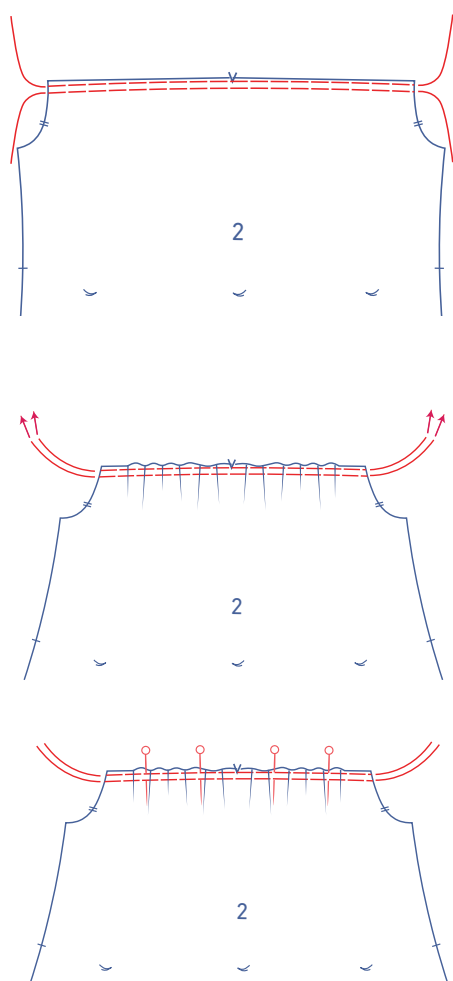


2

Use a long stitch length at a low thread tension to sew 2 parallel rows of basting stitch at the shoulder seam until just past the nicks, making sure not to backstitch at the start or finish. Leave a long tail of thread.

Carefully tug the ends of the threads to pull the fabric into gathers.

Pin the gathers temporarily into place. Later, when it's time to sew the yoke (3), you'll distribute the gathers evenly into position.

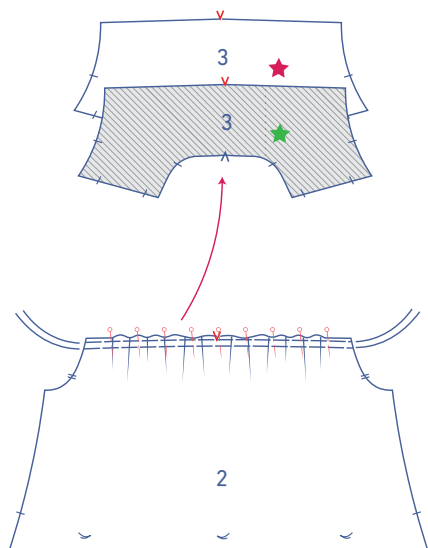


3

Using a long stitch length and a low thread tension, sew 2 parallel rows of basting stitching along the upper edge of the back (2), making sure not to backstitch at the start or finish. Leave a long tail of thread.

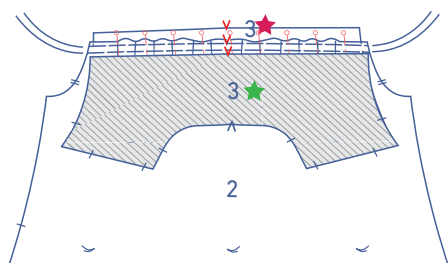
Carefully tug the ends of the threads to pull the fabric into gathers.

Pin the gathers temporarily in place.

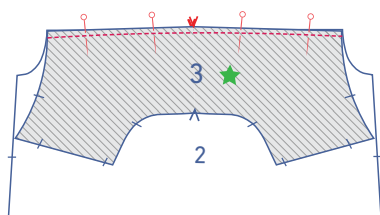


Place the straight edges of both yoke pieces (3) with the right sides facing together.

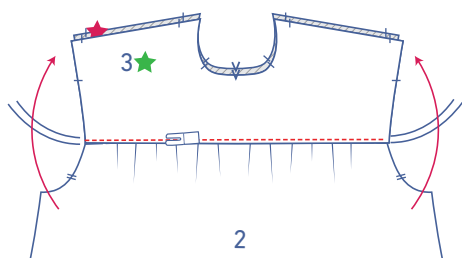
Slide the back (2) between them with the right side facing up. The yoke piece at the top has been marked with a small green star, while the yoke piece intended for the inside of the dress has a red one.



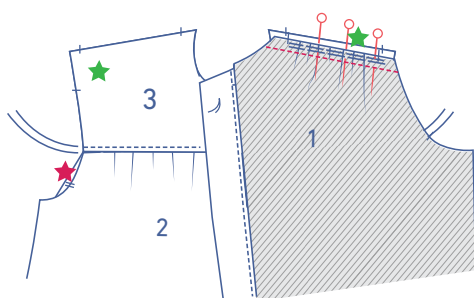
Distribute the gathers evenly, starting approximately $\frac{6}{8}$ " in from the raw edge.



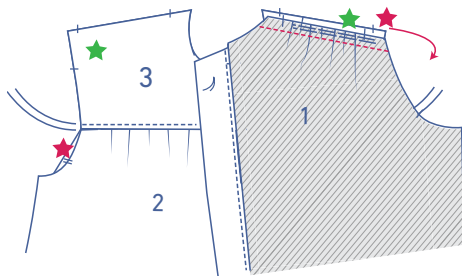
Pin and sew these three layers with the V notches matching.



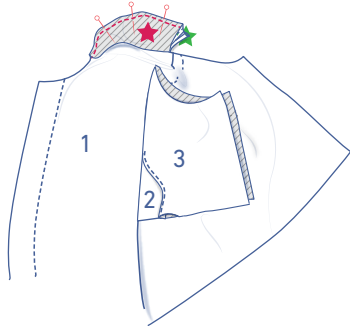
Fold both yoke pieces back up. The back should be neatly positioned between the two pieces. Topstitch right next to the edge.



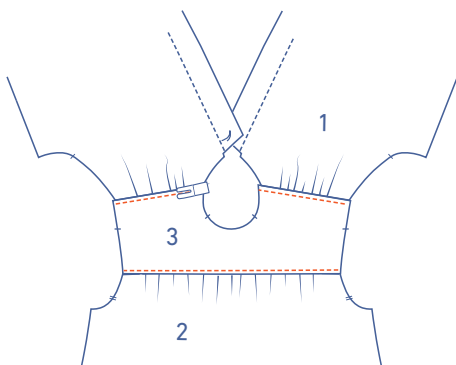
Place the shoulder seams of the front and those of the yoke marked with the small green star with the right sides facing together. Distribute the gathers evenly between the 2 nicks and pin in place.



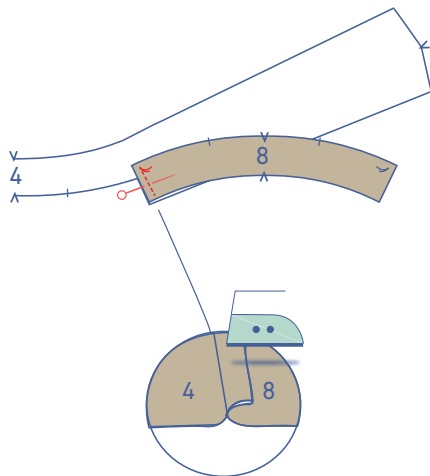
Now take the shoulder seam of the yoke piece marked with a red star and turn this over to the front, with the right side facing down onto the wrong side of the front.



Match the 3 raw edges (yoke with red star + yoke with green star + front) and sew the layers into place. Turn the right way out. The shoulder seam of the front should lie neatly between both yoke pieces.

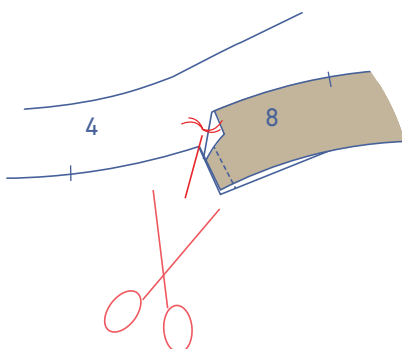


Topstitch right next to edge.

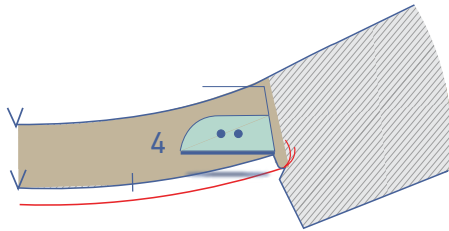


4

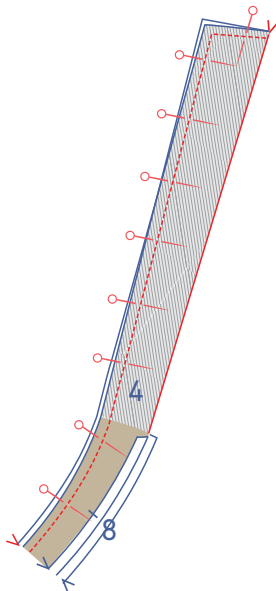
Pin each short end of the collar facing (8) to each short end of the collar (4) with the basting threads matching. Stitch right up into the basting thread. Press the seam allowance towards the collar facing.



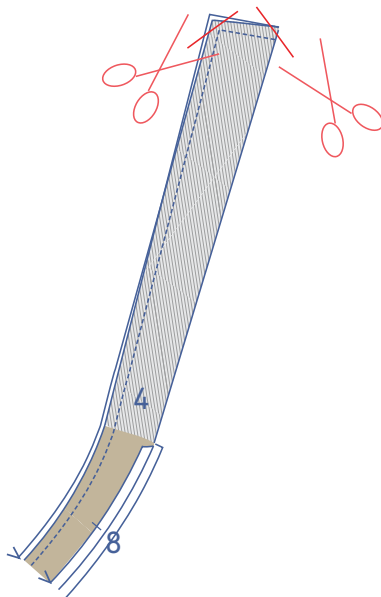
Snip diagonally into the seam allowance of the collar (4) right up to the basting.



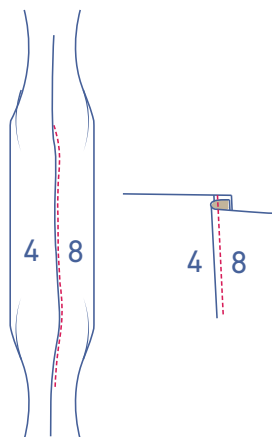
Press $\frac{3}{8}$ " of the collar's seam allowance over to the wrong side, from basting thread to basting thread.



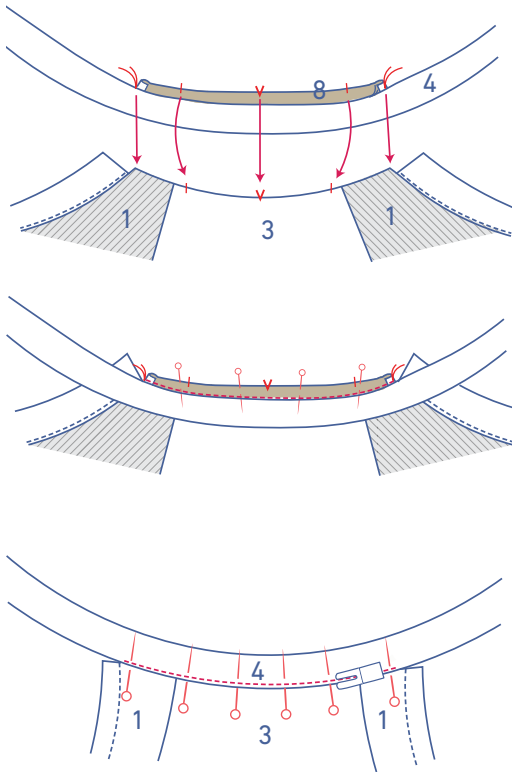
Fold the shaped ribbon in half at the V notches with the right side of the fabric facing inwards and match the CB nicks. Sew the indicated sides together.



Trim the seam allowance in the corners.



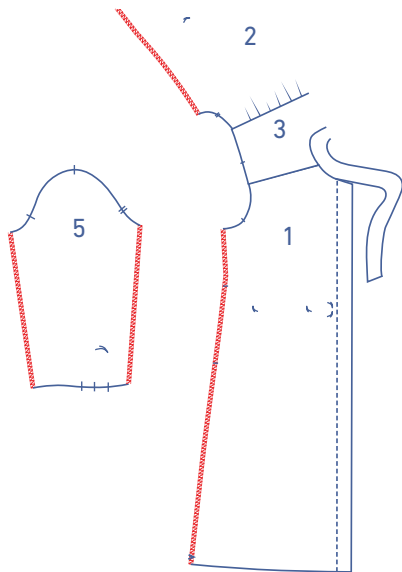
Fold both collar pieces open, so that the right sides are facing up. Fold the seam allowance towards the collar facing. Understitch the collar facing at $\frac{1}{8}$ " from the seam through all layers (collar facing + seam allowance), sewing as far as you can. Turn the collar pieces the right way out. Next, neatly press the collar pieces together.



5

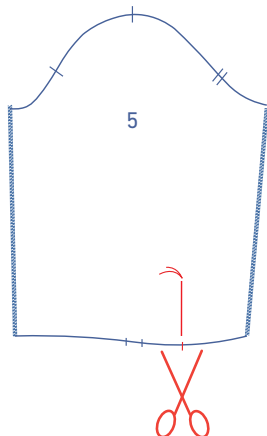
Pin and sew the bottom of the collar that has not been pressed to the neckline along the wrong side of the dress with the corresponding markings matching.

Fold the collar with the pressed bottom onto the right side of the dress neckline. The fold line should lie precisely over the previous row of stitching. Pin and sew in place.

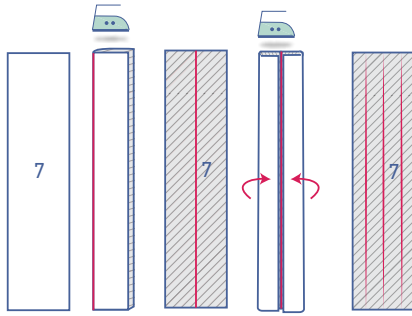


6

Finish the side seams of the front, back, and the sleeve (5) with overlock stitching.

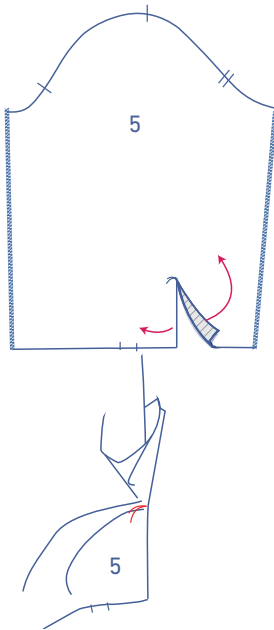


Cut the sleeve from the nick at the bottom up to the basting thread.

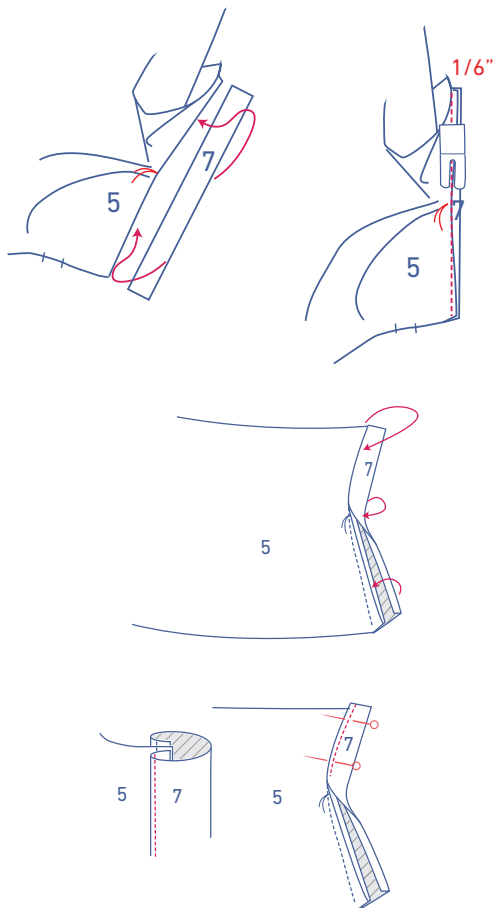


Press the bias sleeve placket (7) as follows:

- Start by pressing the entire bias strip in half lengthways and then open back out.
- Next, press the long sides into the middle to meet the centre line.
- Open back open again.



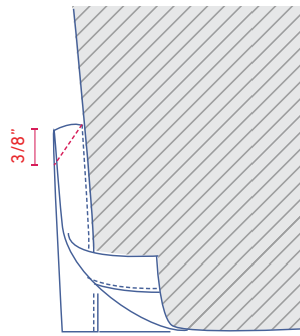
Open the sleeve split so that you end up with a single straight line.



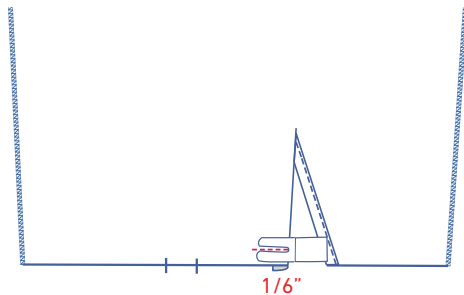
Slide the (unfolded) bias sleeve placket under the sleeve with the right side facing up. Match the raw edges together and pull the sleeve a bit to the side at the basting thread. Sew a line $\frac{1}{6}$ " parallel to the raw edge. Only a few fabric threads have been sewn in place at the basting thread.

Fold the bias strip onto the right side of the sleeve and place the fold line directly over the previous stitching.

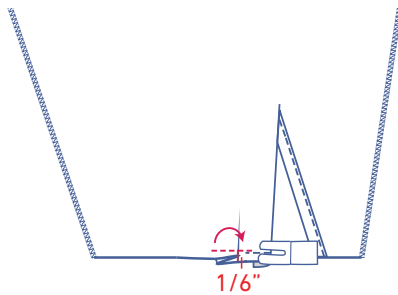
Sew into place right next to the edge.



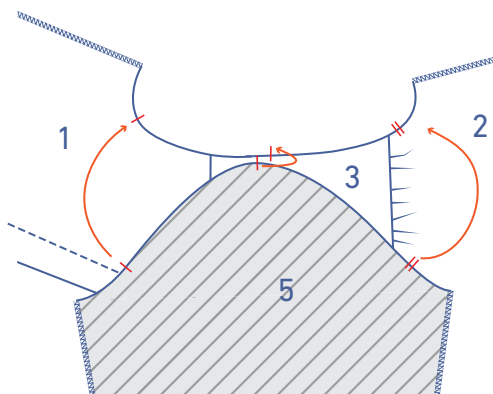
Fold the sleeve in half lengthwise, with the right side of the fabric facing inwards. Sew the top of the bias sleeve placket, with a diagonal line starting at the inner corner. Open the sleeve back out.



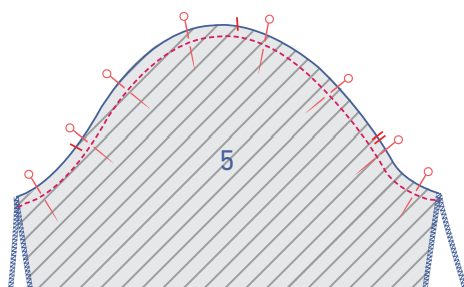
Fold the bias placket at the front of the sleeve (i.e., the side with the pleat nicks) onto the wrong side of the sleeve and sew the bias placket into place at $\frac{1}{6}$ " from the bottom.



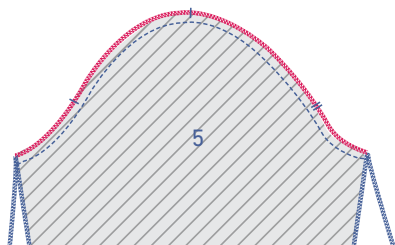
Create the pleat by matching all of the nicks in the direction indicated. Sew the pleat together at $\frac{1}{6}$ " from the lower edge.



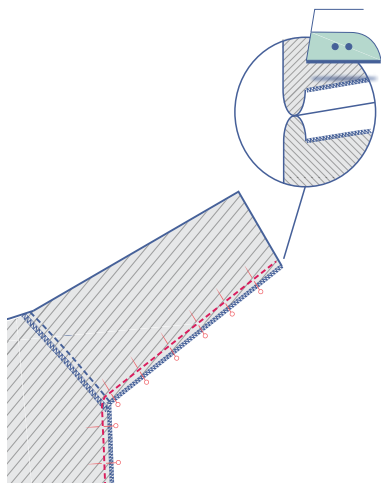
Line up the sleeve cap with the armhole, with the corresponding marks matching. The single sleeve nick matches the single nick on the front, the double sleeve nicks line up with the double nicks on the back. The top single nick in the sleeve matches the nick in the yoke that indicates the true shoulder.



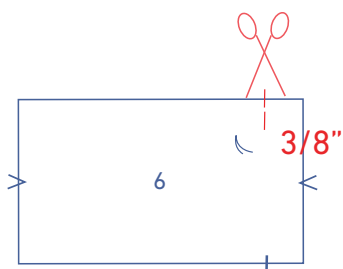
Pin and sew into place.



Finish the raw edges together with overlock stitching.

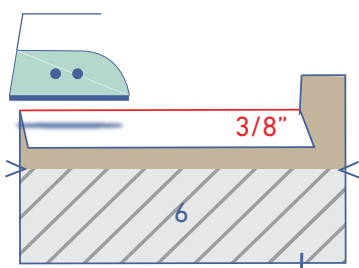


Pin and sew the underarm and side seams. Press open the seam allowance.

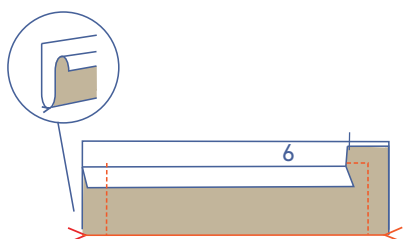


7

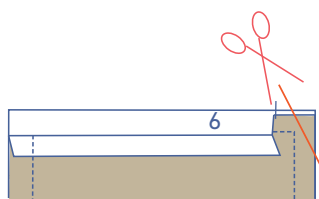
Snip 1 cm into the seam allowance of the wrist trim (6) at the nick on the side with the button.



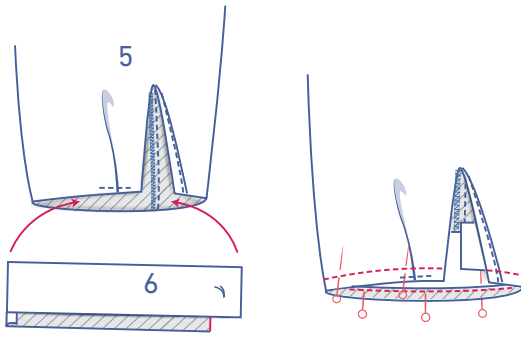
Press $\frac{3}{8}$ " of the seam allowance on the long side over to the wrong side, next to the nick.



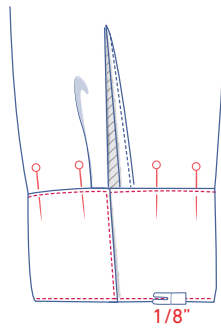
Fold the wrist trim in half at the V notches with the right side of the fabric facing inwards. Sew the indicated sides.



Trim the seam allowance in the corners and turn back the right way out.



Slide the wrist trim into the sleeve. Pin and sew the raw edge of the right side of the wrist trim to the lower edge of the inside sleeve. The raw edge of the unpressed end of the wrist trim should match the edge of the bias placket at the back of the sleeve (the side without a pleat).

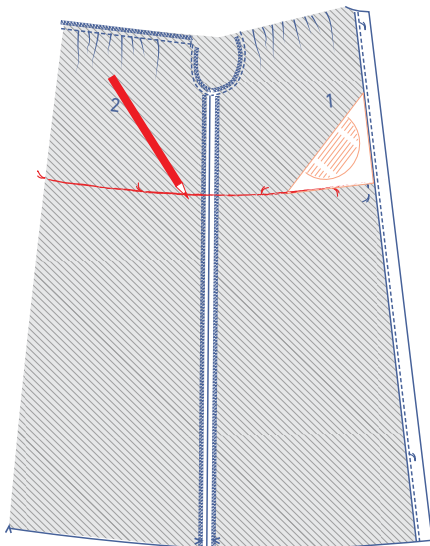


Fold the wrist trim towards the right side of the sleeve and place the fold line (of the pressed over seam allowance) directly over the previous stitching. Pin and sew into place. Finish the stitching around the wrist trim.

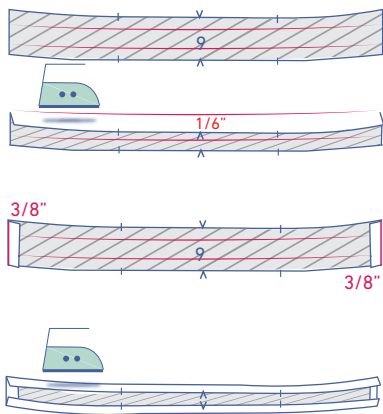


8

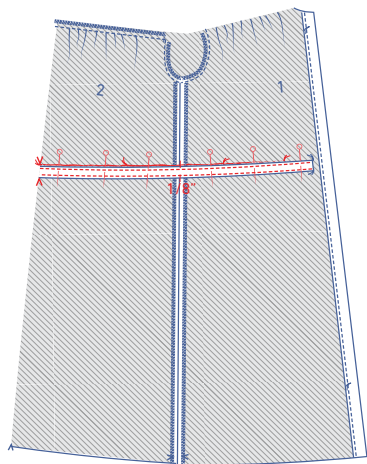
Make two vertical buttonholes at the indicated places on the front.



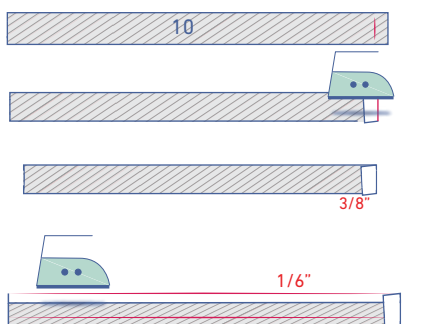
Mark the binding threads along the wrong side of the front and back with a chalkline.



Press the long sides of the casing (9) $\frac{1}{6}$ " over to the wrong side. Press the short ends $\frac{3}{8}$ " over to the wrong side.

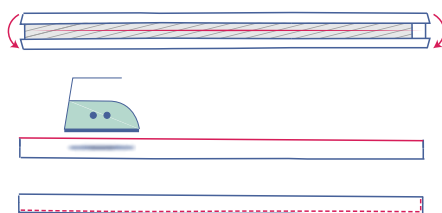


Pin the casing along the wrong side of the piece. The top of the casing should line up with the chalk line, with the sides positioned next to the vertical buttonholes. Sew the top and bottom sides into place at $\frac{1}{8}$ " from the edge.



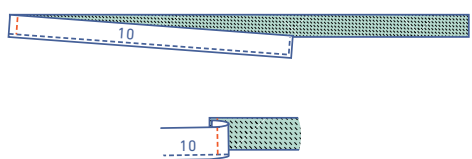
9

Press 1 short side of the ribbon (10) $\frac{3}{8}$ " over to the wrong side.



Press the long sides $\frac{1}{6}$ " over to the wrong side.

Fold in half lengthwise.

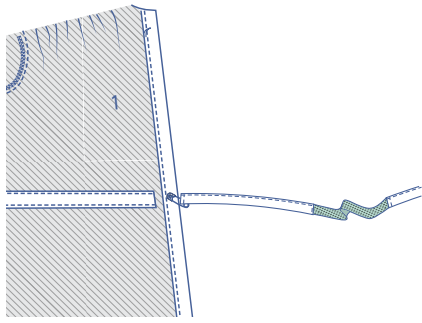


Sew into place all the way around at $\frac{1}{8}$ " from the edge.

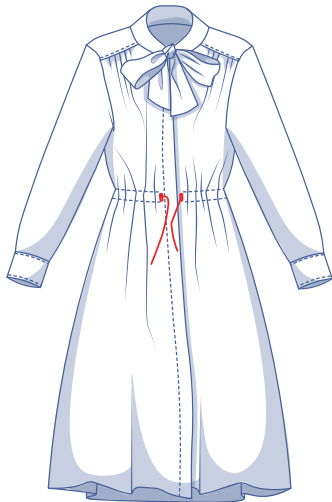
Sew the unfinished short end of the ribbon to the ends of the elastic band.



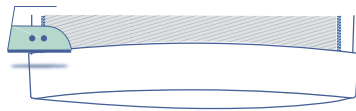
Fold the ribbon over the seam allowance and stitch right next to the edge through all layers (ribbon + seam allowance).



Thread the elastic band with the ribbons through the casing on the wrong side of the dress.

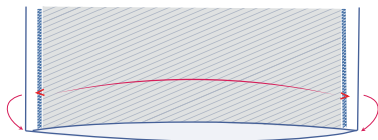


Pull the ribbons through along the right side of the dress through the buttonholes.

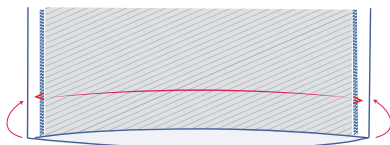


10

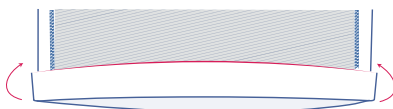
Press the hem allowance over at the V notches.



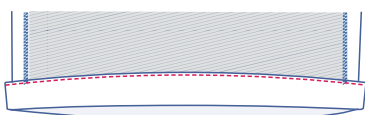
Open back out again.

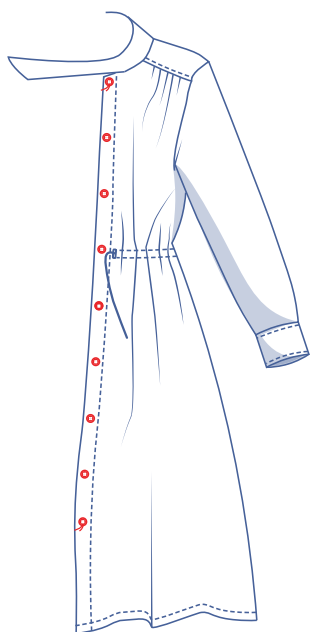


Place the raw edge against the pressed fold line and fold back up again.



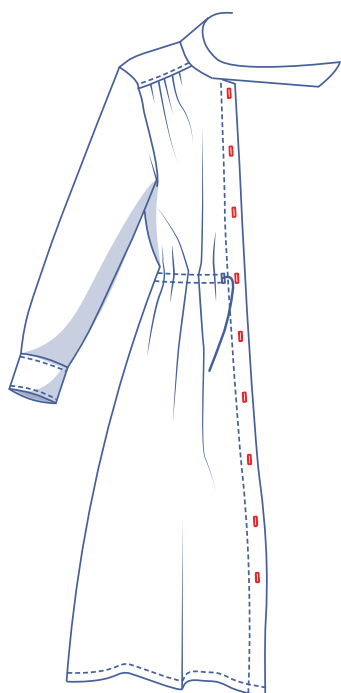
Sew into place right next to the edge.



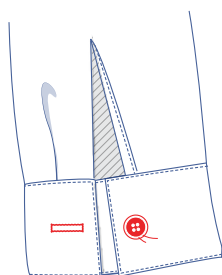


11

Sew the buttons on at the indicated places. The top and bottom button are marked on the pattern. Divide the distance equally to determine the position of the other buttons.



Make the vertical buttonholes based on the location of the buttons. The button should line up with the top 1/3 of the buttonhole.



Sew the buttons on the wrist trims at the indicated places. Make a horizontal buttonhole based on the location of the button on the side with the pleat. This should be half way up and 1 cm in from the edge.

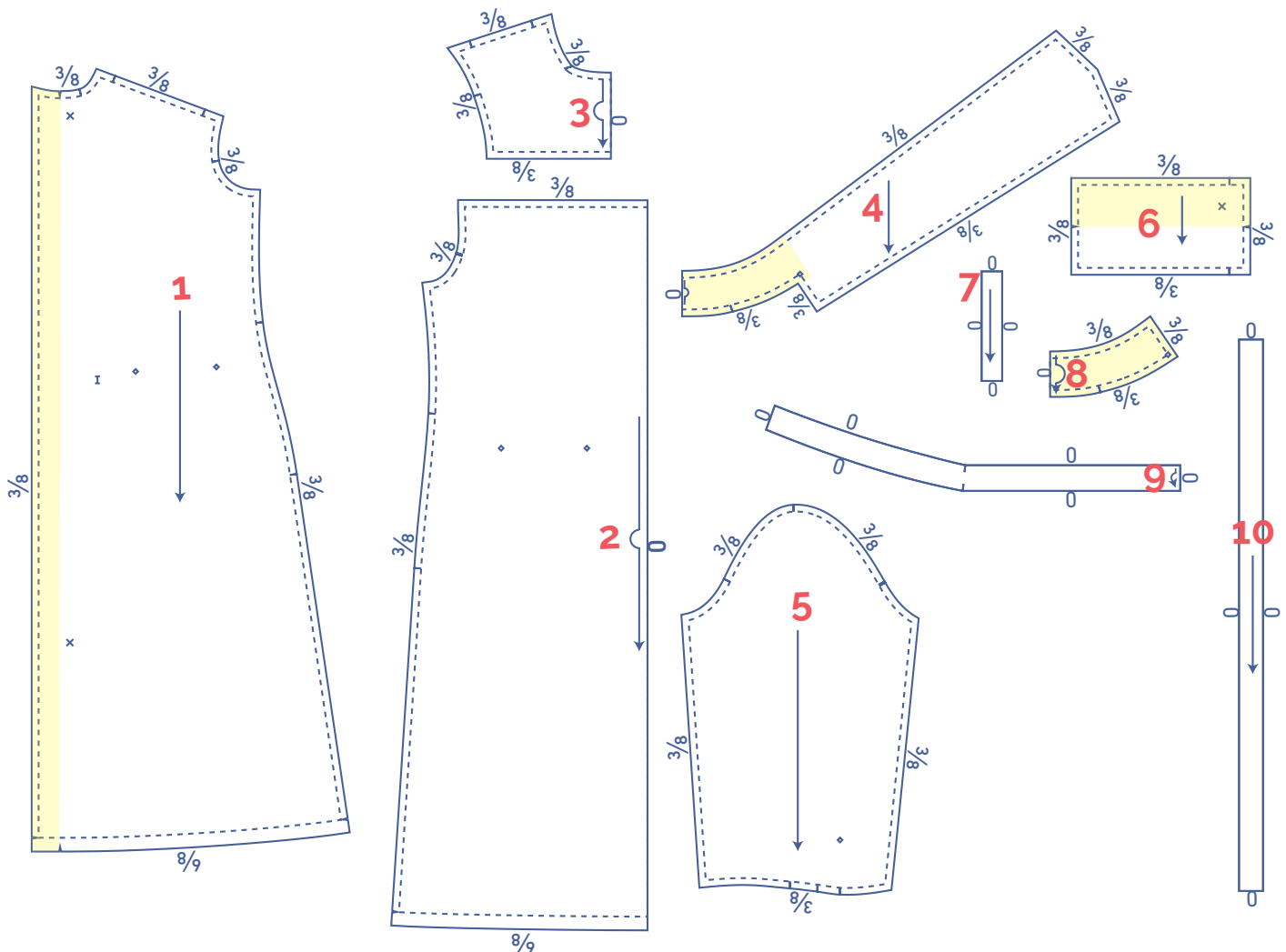
pattern pieces & seam allowances (in inches)

To sew the garment together as described in the instructions, you must draw the illustrated seam allowances around the paper pattern pieces before cutting them out.

1. front: 2x
2. back: 1x on fabric fold
3. yoke: 2x on fabric fold
4. collar: 1x on fabric fold
5. sleeve: 2x
6. wrist trim: 2x
7. bias sleeve placket: 2x
8. collar facing: 1x on fabric fold
9. casing: 1x on fabric fold (optional)
10. ribbon: 2x. (optional) Draw this pattern piece yourself.
Draw a rectangle of 1.4x31.5" (sz. 32-38); 1.4x35.4" (sz. 40-46); 1.4x39.4" (sz. 48-52); 1.4x42.3" (sz. 54-58).

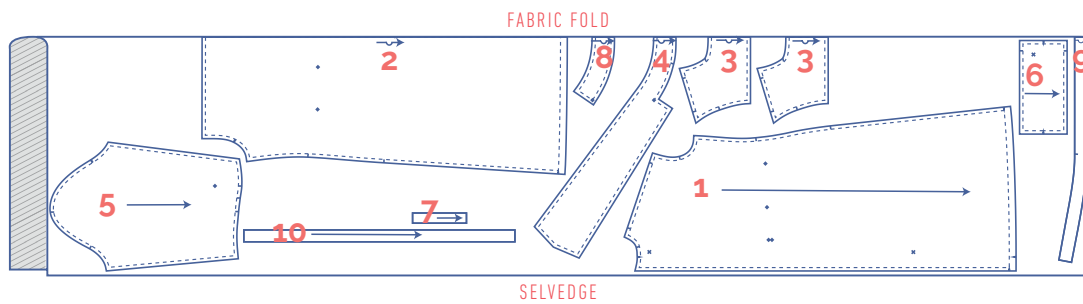
IMPORTANT

The pieces highlighted in light yellow have iron-on interfacing attached to the wrong side.

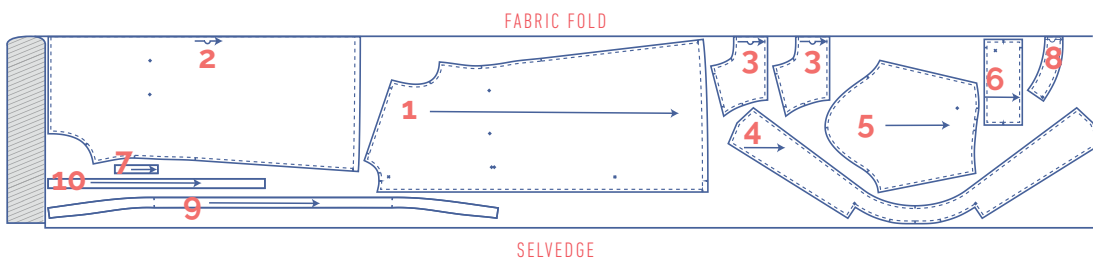


fabric layout for fabrics 55" wide

0 - 12



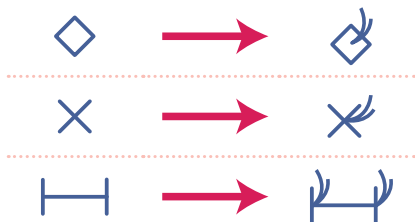
14 - 26



IMPORTANT

You only need pattern pieces 4 and 9 once.

- Mark the next points with basting thread:



- Nick the pattern paper and fabric at the places where a single vertical line (I) and double vertical lines (II) are indicated.
- Cut a small corner out of the fabric at a V notch symbol or on the finished hemline.
- Cut a small corner (V notch) out of the pieces that lie on the fabric fold (—) to mark the middle of these pieces.