

Elisa by Fibre ood

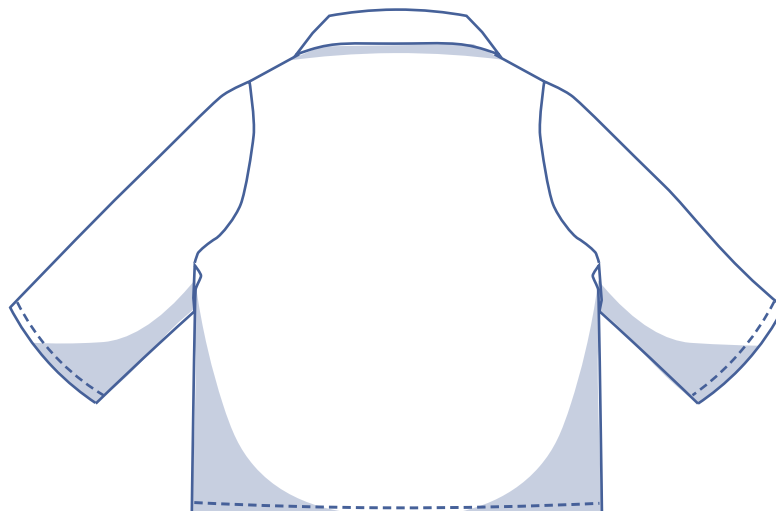


Elisa by Fibre ⚡ood



XS - XXXL

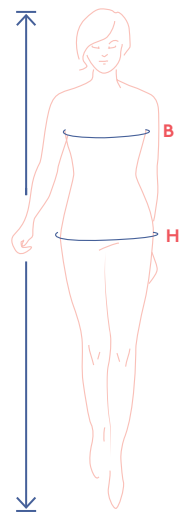
This boxy blouse is a basic, but still has plenty of charm. With its collar, lapels and short, loose sleeves, it won't be long before you can't do without the Elisa in your wardrobe. It's a pleasure to wear and easy to style. Elisa is even more in her element worn with a pair of high waisted trousers. The **Ebony** mom jeans, for example, would be great. Would you prefer it longer and/or with longer sleeves? You can do that! Just check out [these instructions](#).



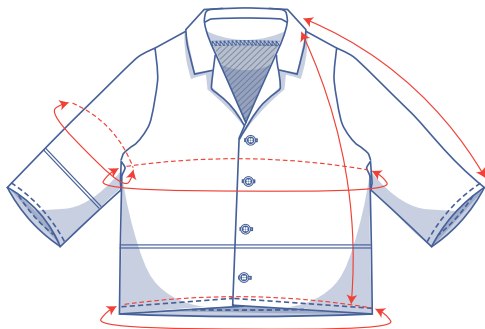
size chart (in inches)

size	XS		S		M		L		XL		XXL		XXXL		
	0	2	4	6	8	10	12	14	16	18	20	22	24	26	28
body height	5'24" 5'38"		5'45" 5'48"		5'51" 5'54"		5'58" 5'61"		5'64" 5'64"		5'64" 5'64"		5'64" 5'64" 5'64"		
B (bust)	29.9	31.5	33.1	34.6	36.2	37.8	39.4	40.9	43.3	45.7	48	50.4	52.8	55.1	57.5
H (hip)	33.9	35.4	37	38.2	39.4	40.6	41.7	42.9	45.3	47.2	49.2	51.2	53.1	55.1	57.1

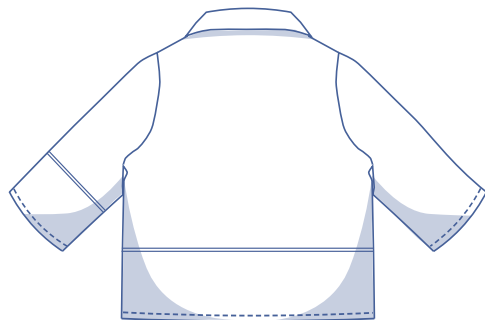
For this pattern, you should choose the size based on your bust measurement. Pick the size that is the best fit for your bust measurement.



finished garment measurements (in inches)



This chart's measurements are the pattern measurements based on the fabric type and serve as a reference. Ease has been added to the width measurements (in addition to the exact body measurements) for a more comfortable fit. Elisa is designed to have a looser cut. Depending on the preferred cut, you could possibly go a size smaller or larger than the size chosen.



Compare the stated lengths to the measured or desired lengths. **Lengthen** or **shorten** the blouse and/or sleeves by cutting the pattern pieces at the indicated double lines. Then either increase the distance between the cut pieces by the desired amount (to lengthen), or overlap the pieces (to shorten). Make sure that the CF and CB lines and the side seams are always straight.

— shorten or lengthen the pattern here

size	XS	S	M	L	XL	XXL	XXXL
length	21.2	22.1	22.9	23.8	25.1	26.3	27.6
sleeve length*	19.2	19.7	20.3	20.9	21.4	22	22.5
bust	36.5	39.6	42.8	45.9	49.9	54.6	59.3
upper arm circumference	13.3	14.5	15.7	16.9	18.3	20	21.9
hem circumference	40.1	43.3	46.4	49.8	53.7	58.5	63.2

* Including the shoulder length.

IMPORTANT

Adjust the amount of fabric to be used based on the alterations.



supplies



- Thread
- Iron-on interfacing: max. 0.9 yd
- buttons (Ø 11/16"): see table
- Fabric: see table

buttons	XS	S	M	L	XL	XXL	XXXL
	4	4	4	4	5	5	5

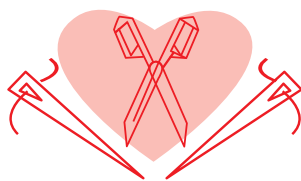
fabric		XS	S	M	L	XL	XXL	XXXL
fabric width 43"	yd	1 ½	1 ½	1 ¾	2	2	2	2 ½
fabric width 55"	yd	1 ¼	1 ½	1 ½	1 ¾	2	2	2 ¼

The corresponding fabric layout can be found on page 6 of these sewing instructions.

fabric advice Solids or prints, linen, viscose, lyocell, satin or cotton: anything goes! It's up to you!



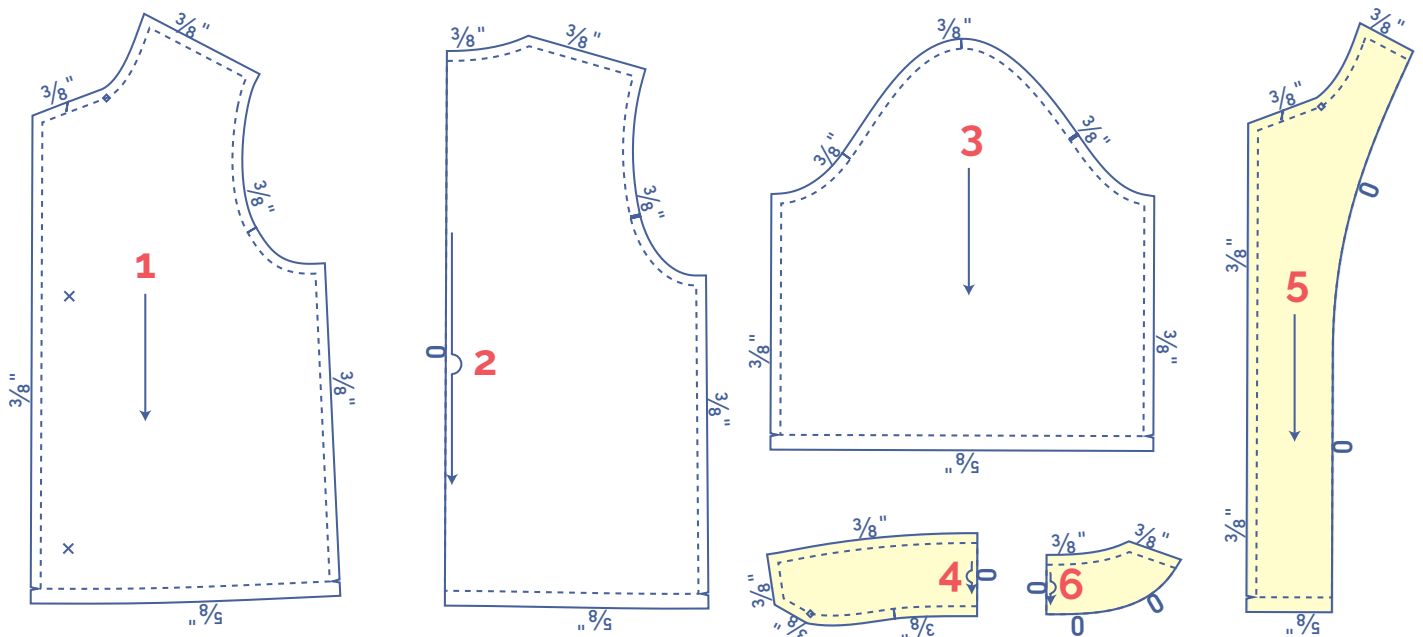
Proud to be #Sewista



pattern pieces & seam allowances (in inches)



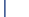
To sew the garment as described in the instructions, you must draw the illustrated seam allowances around the paper pattern pieces before cutting them out.

1. front: 2x
2. back: 1x on fabric fold
3. sleeve: 2x
4. collar: 2x on fabric fold
5. facing front: 2x
6. facing back: 1x on fabric fold



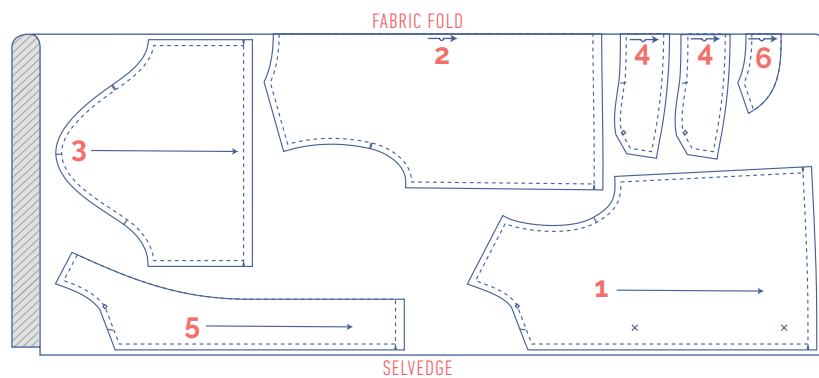
IMPORTANT

The pieces highlighted in light yellow have iron-on interfacing attached to the wrong side.

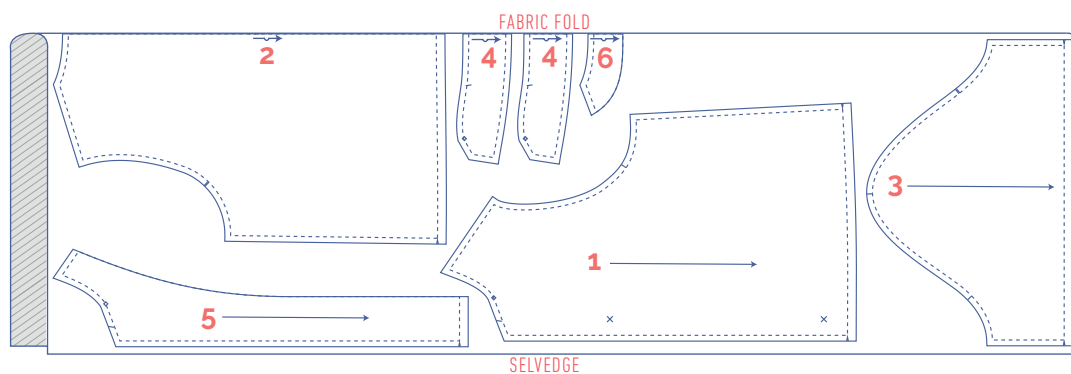
	material type
	fabric
	iron-on interfacing

fabric layout – solid fabrics fabric width 43"

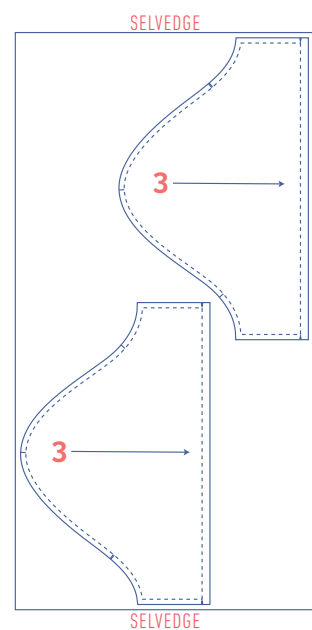
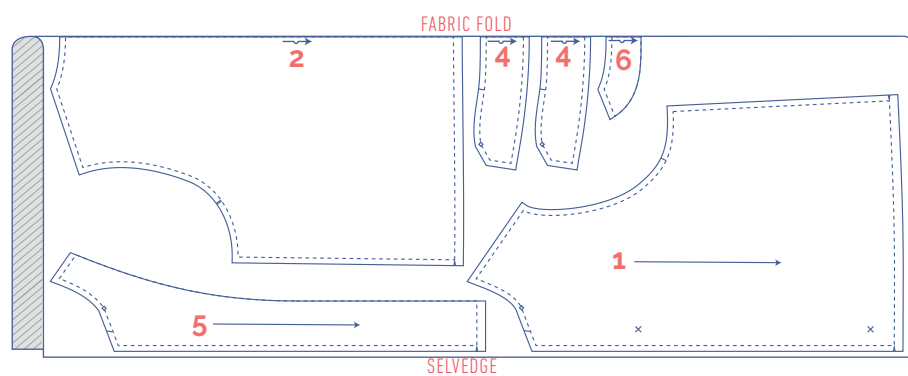
XS - S



M - XXL

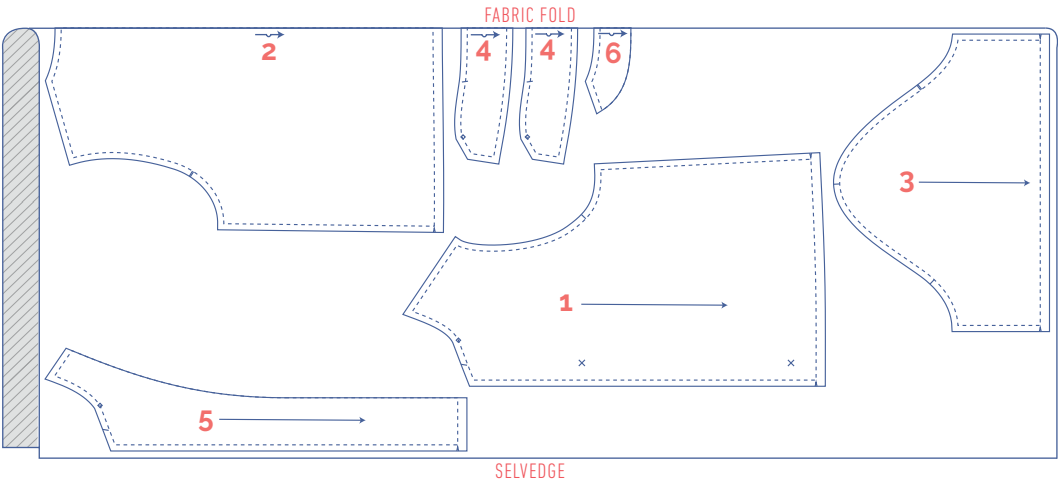


XXXL



fabric layout – solid fabrics fabric width 55"

XS - XXXL




marking pattern pieces






	notch the pattern paper and fabric at the following points		mark the following points using marking thread
	single notch		centre point
	double notch		snap/button
	V notch		buttonhole

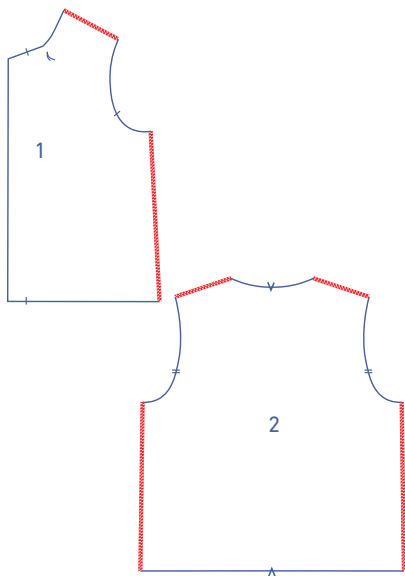
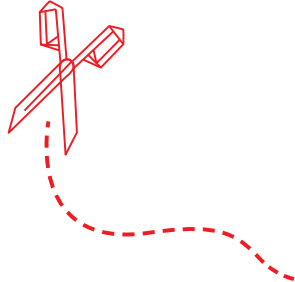
sewing instructions



The method used to finish sewing the garment depends on the fabric used. The pieces are always sewn together with the right sides of the fabric facing together, unless stated otherwise.

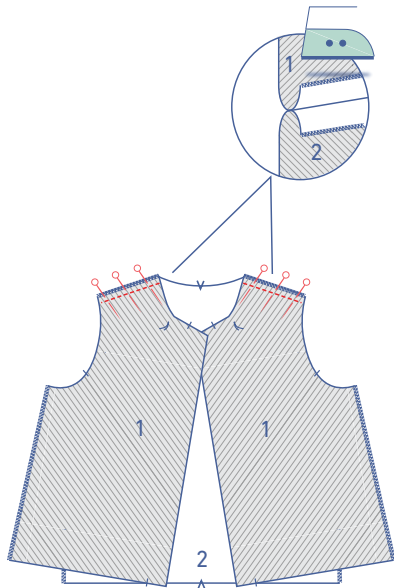


F	front
B	back
RF	right front 
LF	left front 
CF	centre front
CB	centre back
	right side
	wrong side
	iron-on interfacing

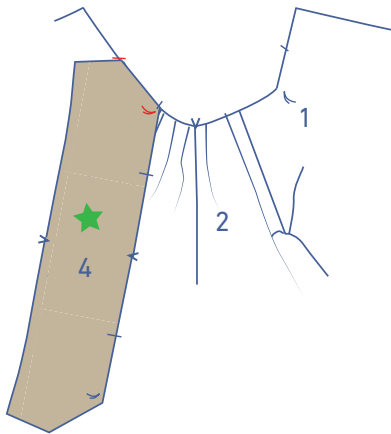


1

Finish the shoulder and side seams of the front (1) and the back (2) with overlock stitching.

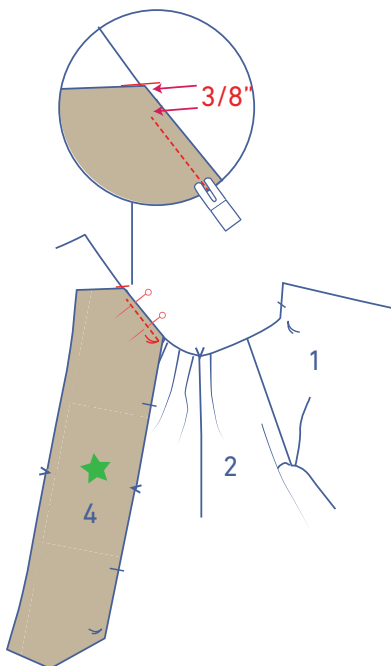


Pin and sew the shoulder seams and press open the seam allowance.

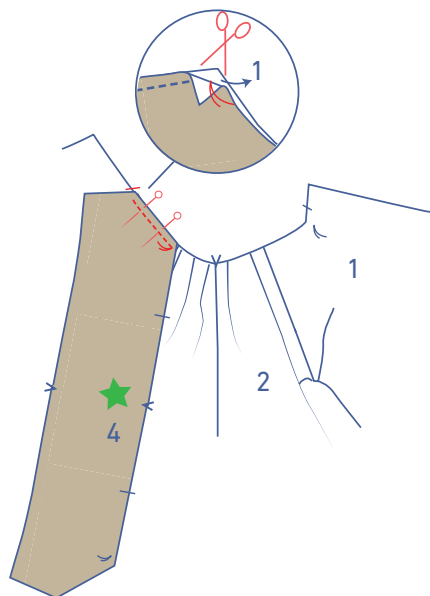


2

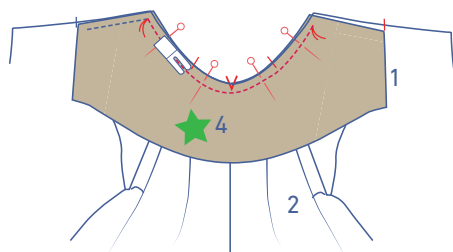
Place the raw edge of the interfaced under collar (marked with a green star) against the diagonal notch on the CF. Check the diagram to make sure the piece is pointing in the right direction. The marking thread in the corner of the under collar should perfectly overlap the marking thread on the front.



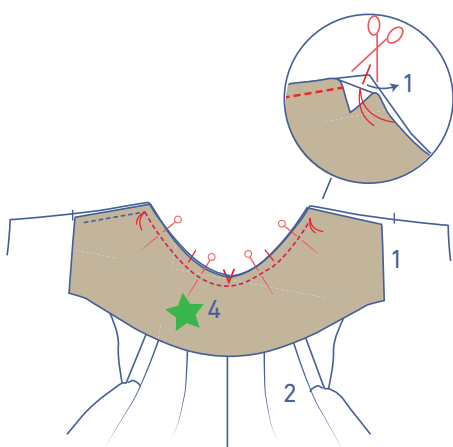
Pin and sew the under collar to the front where indicated, leaving the needle in the fabric at the end. Start sewing at 3/8" from the edge of the collar.



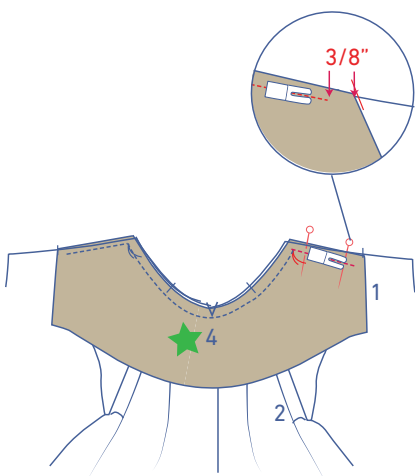
Raise the presser foot and snip into the seam allowance of the front until just before the needle (not into the seam allowance of the undercollar). Pivot the body of the shirt to the left to meet the undercollar and lower the presser foot back down.



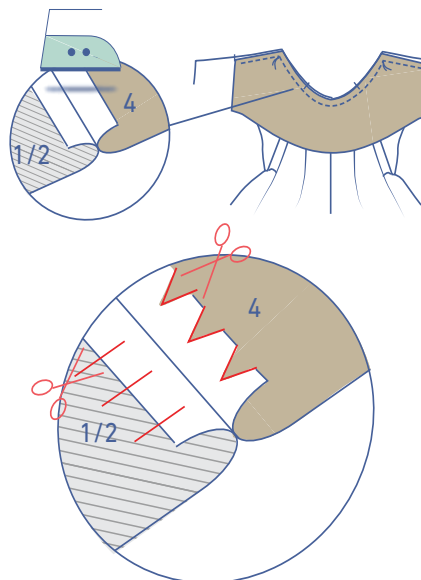
Pin the rest of the neckline with the corresponding marks matching. The notch on the collar should line up with the shoulder seam. Leave the needle lowered in the fabric again, this time at the marking thread in the corner of the collar.



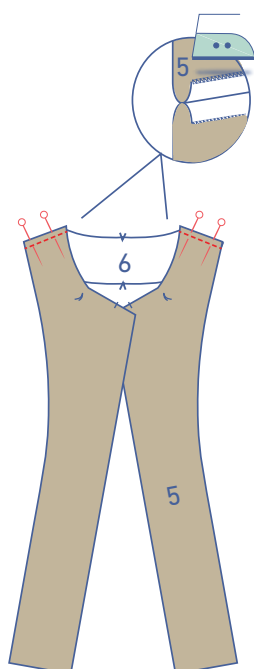
Repeat the same steps to sew the other end of the collar into place.



Once again, stop sewing 3/8" before you reach the end of the undercollar.

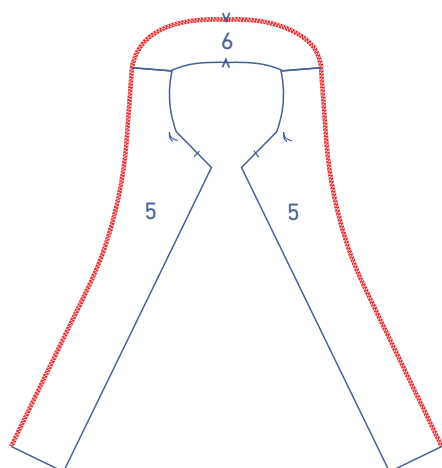


Press the seam allowance open. Cut notches out of the undercollar's seam allowance at the neckline. There is an excess of fabric due to curve of the neckline. The notches remove the excess so the collar lies flat. Now make small snips into the seam allowance of the front/back. There should be one snip per undercollar notch. Line up the snips with the tips of the notches as illustrated.

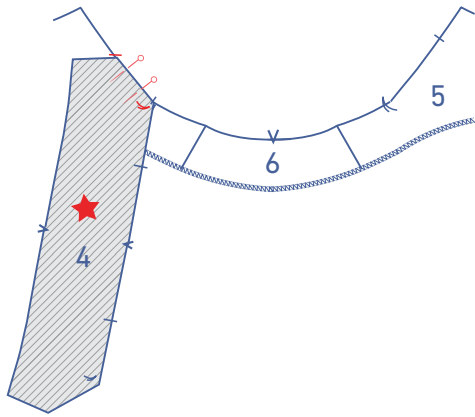


3

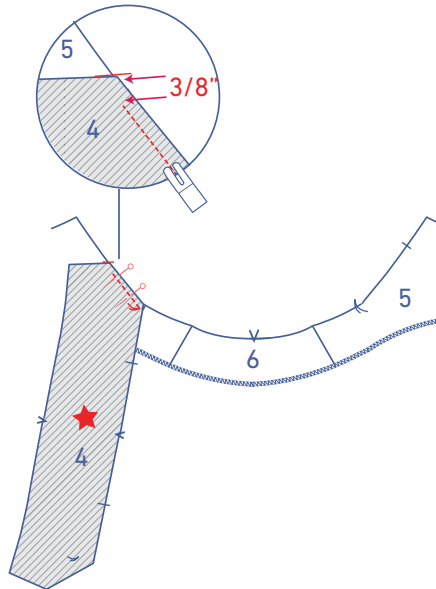
Pin and sew the shoulder seams of the front facing (5) and back facing (6) and press the seam allowance open.



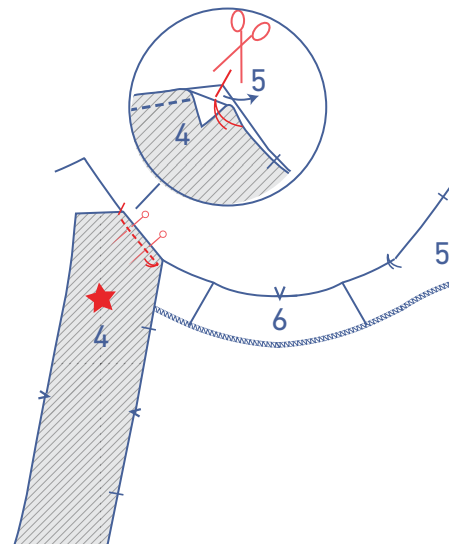
Finish the outside curve of the facing with overlock stitching.



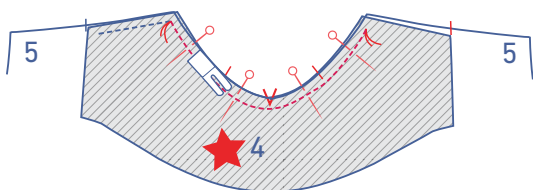
Place the raw edge of the uninterfaced collar (marked with a red star) against the diagonal notch on the CF. The remainder of the collar should be pointing down as shown. The marking thread in the corner of the collar should perfectly overlap the marking thread on the facing.



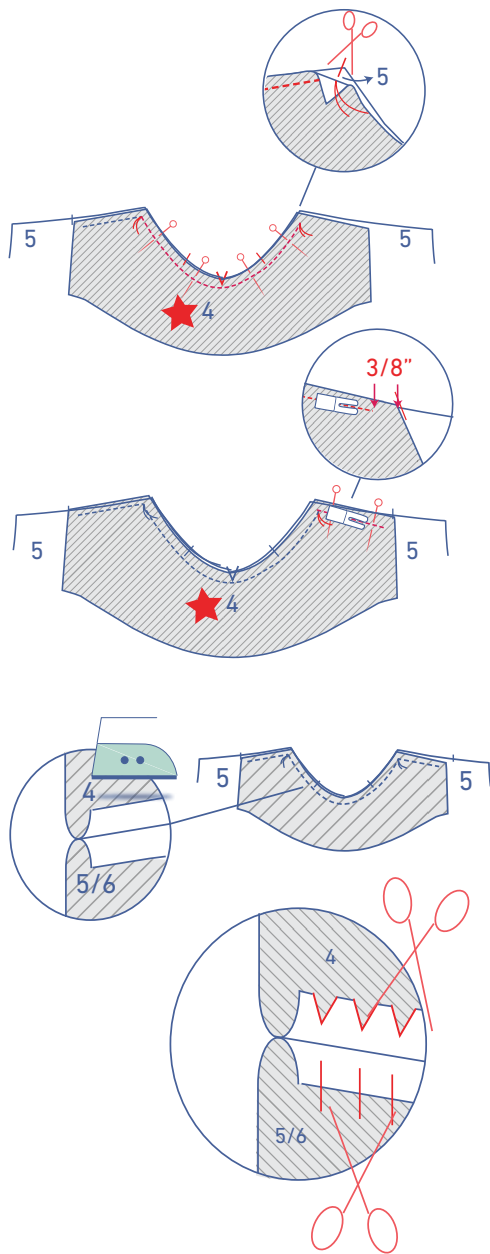
Pin and sew the collar to the facing where indicated, leaving the needle in the fabric at the end. Start sewing at 3/8" from the edge of the collar.



Raise the presser foot and snip into the seam allowance of the facing until just before the needle (not in the seam allowance of the collar). Pivot the facing towards the left to meet the collar piece and lower the presser foot back down.

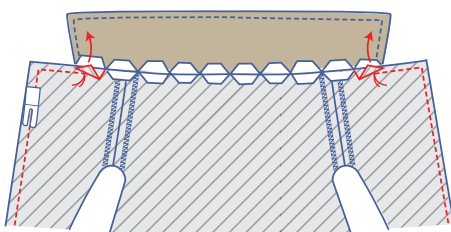
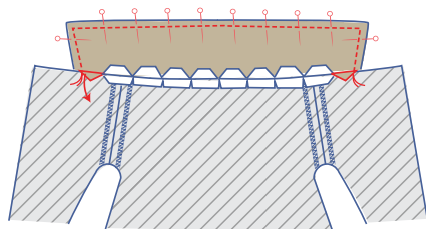


Pin the rest of the neckline with the corresponding marks matching. The notch on the collar should line up with the shoulder seam. Leave the needle lowered in the fabric again, this time at the marking thread in the corner of the collar.



Repeat the same steps to sew the other end of the collar into place. Once again, stop sewing 3/8" before you reach the end.

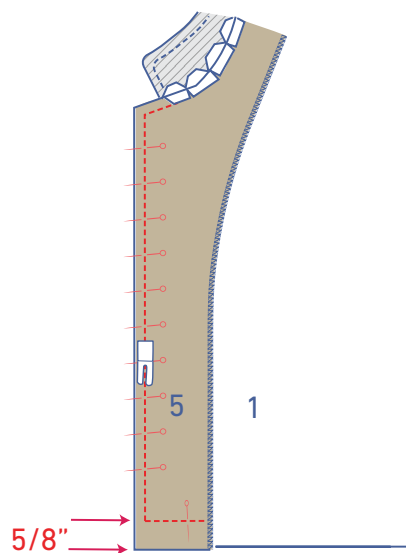
Press the seam allowance open. Cut notches out of the collar's seam allowance at the neckline (There is an excess of fabric due to curve of the neckline. The notches remove the excess so the collar lies flat.) Now make small snips into the seam allowance of the facing. There should be one snip per collar notch. Line up the snips with the tips of the notches as illustrated.



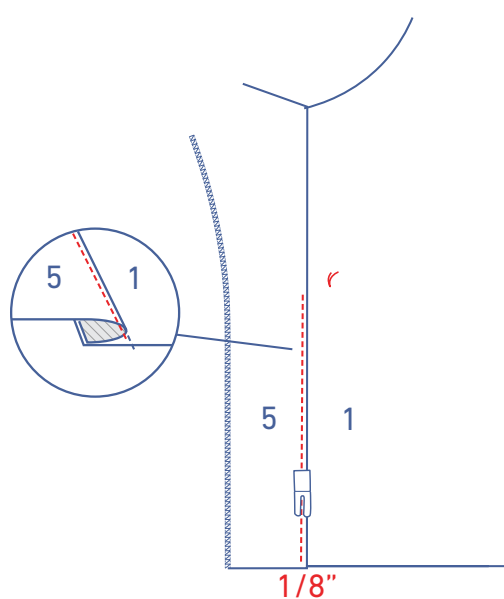
4

Start by sewing the collar pieces together. Pin the collar pieces together, right sides facing, and sew the three sides into place (as shown) with a 3/8" seam allowance. When sewing the collar, move the seam allowance of the indicated sides down or out of the way.

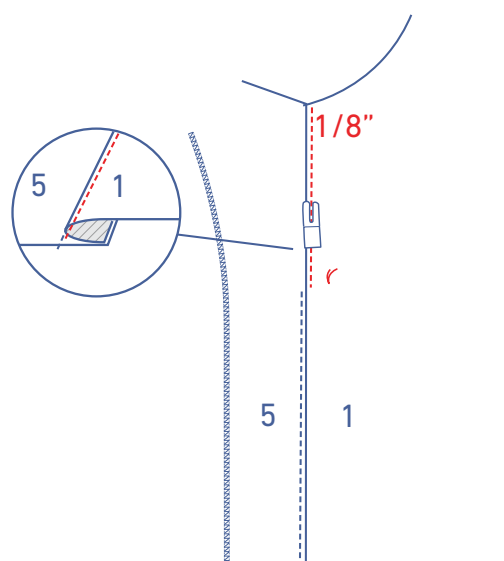
Now, pin and sew the CF lines together. Sew from the marking thread to the hem. Move the seam allowance of the collar up or out of the way.



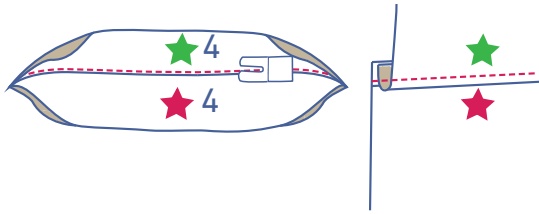
Sew the bottom of the hem at 5/8" parallel with the raw edge. Stop when you reach the end of the facing.



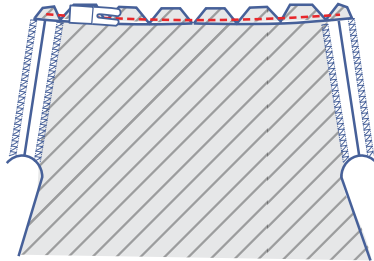
Turn the blouse the right way out. On CF line, take the seam allowances between the top button mark and the hem (as shown). Fold towards the front of the facing. Sew through all the layers (facing + seam allowance), 1/8" from the edge.



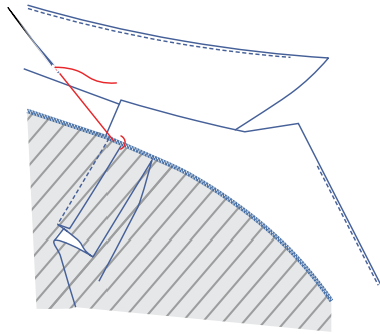
Now, still on CF line, take the seam allowances between the top button mark and the top of the blouse (as shown). Fold towards the front piece. Sew through all the layers (facing + seam allowance), 1/8" from the edge. You will not be able to sew to the end, but go as far as you can.



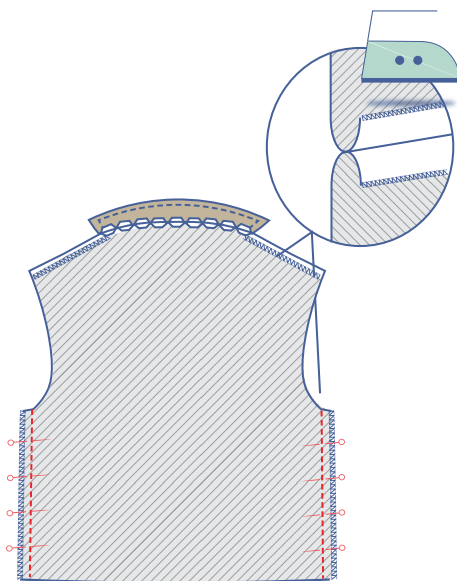
Open both collar pieces out, so that the right sides are facing up. Fold the seam allowance towards the under collar (green star). Sew the under collar right next to the seam through all layers (under collar + seam allowance). Then press.



Sew the seam allowance of the facing at the neckline off to the seam allowance of the front and back.

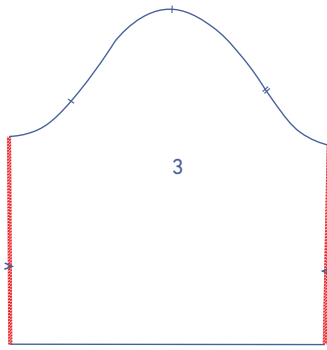


Hand sew the facing into place at the shoulder seam with just a few stitches.

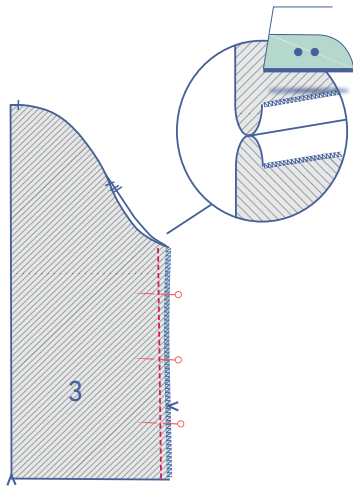


5

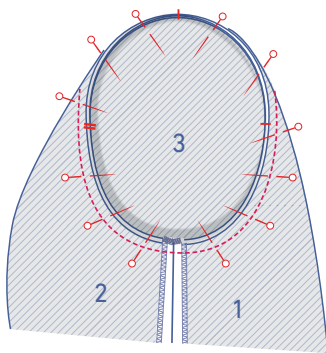
Pin and sew the side seams of the front and back and press the seam allowance open.



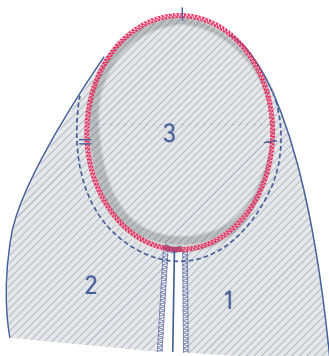
Finish the sides of the sleeve (3) with overlock stitching.



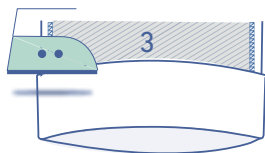
Pin and sew the sides of the sleeves and press the seam allowance open.



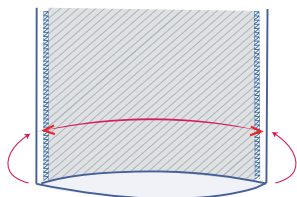
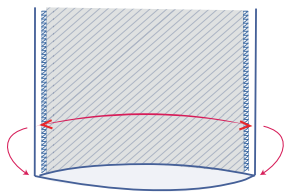
Pin the sleeve to the armhole with the corresponding notches matching. The single notch matches the front, the double matches the back, and the single notch at the top should align with the shoulder seam. Distribute the fabric between the markings. Sew into place.



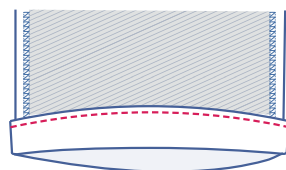
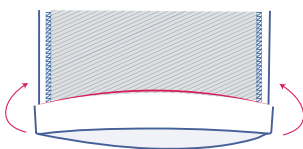
Finish the raw edges using an overlock stitch.



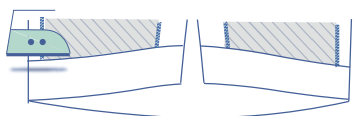
Finish the sleeve hem: press the seam allowance over to the V notch and open back out.



Place the raw edge against the pressed fold line and fold over once more.

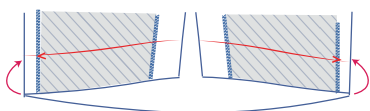
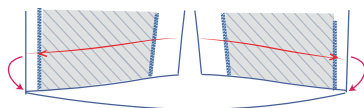


Sew into place next to the edge.

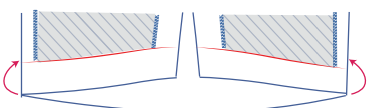


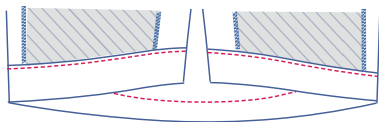
6

Press the hem allowance of the front and back over at the V notches. Open back out again.

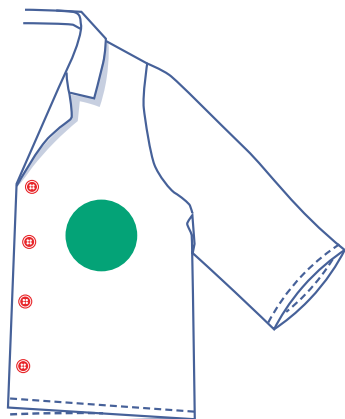


Place the raw edge against the pressed fold line and fold over once more.



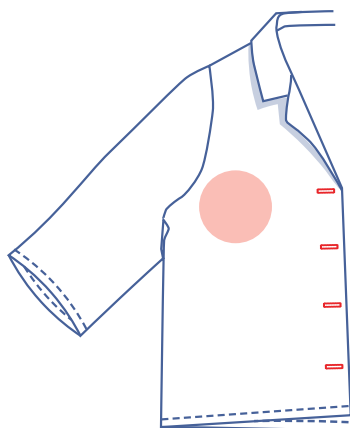


Sew into place right next to the edge.



7

Sew the buttons on where indicated. The top and bottom buttons have been marked on the pattern. Divide the distance equally to determine the positions of the other buttons.



Make the horizontal buttonholes based on the position of the buttons.