

Ivory by Fibre Mood



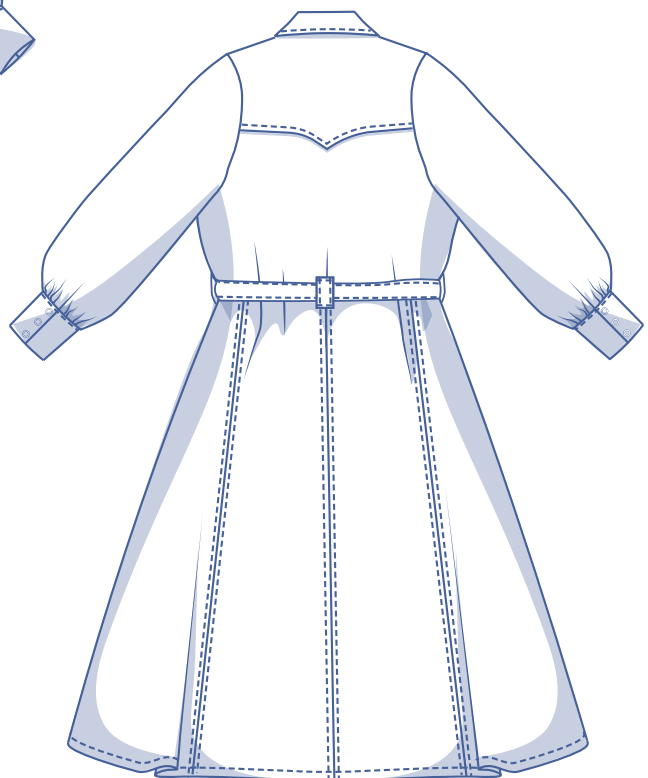
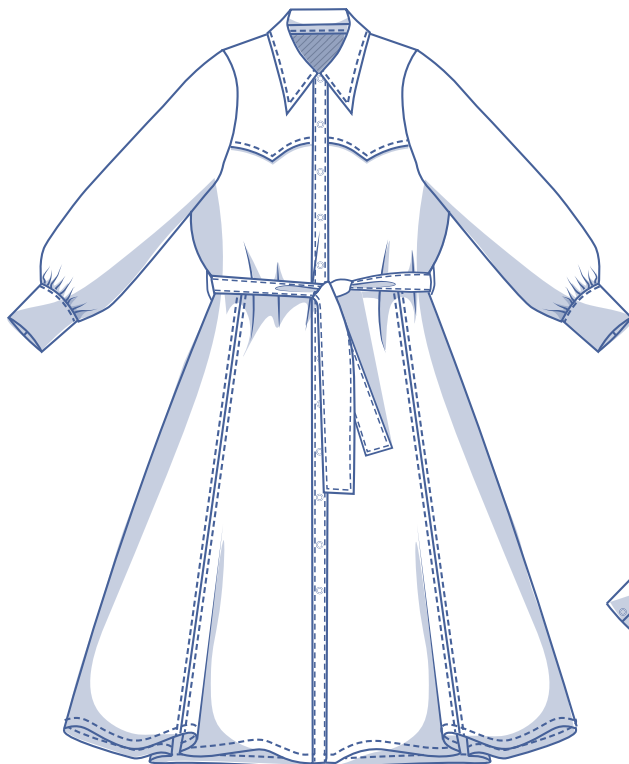
Ivory by Fibre ⚡ood

***✂✂



4 - 30

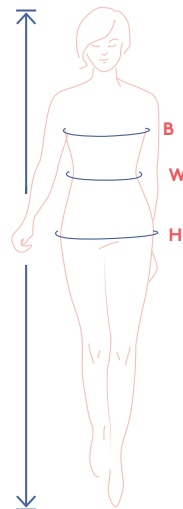
Of course there's room for another shirt dress in your cupboard, especially if Calamity Jane provided the inspiration! Ivory has a slightly flared skirt and gathered sleeves right over the roomy buttoned wrist cuff. The design is nothing if spirited, with lovely accents that are a clear nod to the Wild West. There's a collar with large points, characteristic details decorating the shoulder pieces and back, and a sturdy belt. And by the way... Ivory can adapt faster than you can draw, so you can make it as long or short as you want. For a super sexy dress, have it end a daring length above the knee. And if you end it at the top, you'll have yourself a fantastic Western shirt. Wanna bet that you'll turn heads when you step into the saloon (wine bar)?



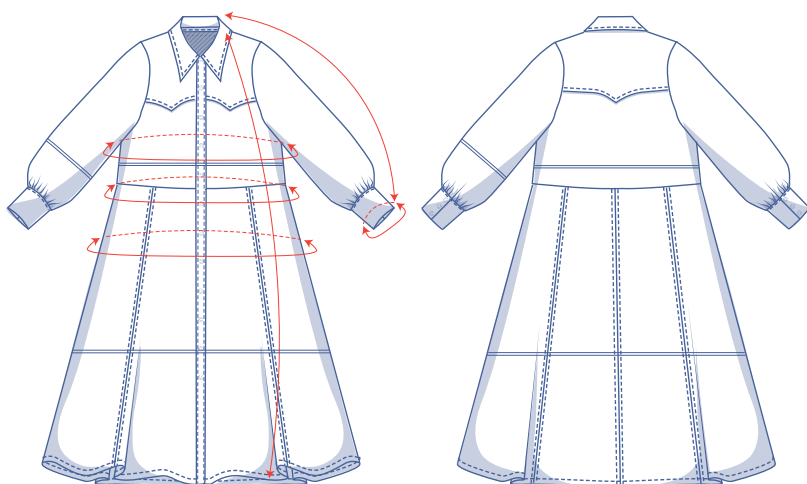
size chart (in cm)

| size | 4 | 6 | 8 | 10 | 12 | 14 | 16 | 18 | 20 | 22 | 24 | 26 | 28 | 30 |
|-------------|-----|-----|-----|-----|-----|-----|-----|-----|------|-----|-------|-----|-------|-----|
| body height | 160 | 164 | 166 | 167 | 168 | 169 | 170 | 171 | 172 | 172 | 172 | 172 | 172 | 172 |
| B (bust) | 76 | 80 | 84 | 88 | 92 | 96 | 100 | 104 | 110 | 116 | 122 | 128 | 134 | 140 |
| W (waist) | 66 | 68 | 70 | 74 | 78 | 82 | 84 | 88 | 94.5 | 101 | 107.5 | 114 | 120.5 | 127 |
| H (hip) | 86 | 90 | 94 | 97 | 100 | 103 | 106 | 109 | 115 | 120 | 125 | 130 | 135 | 140 |

Choose your size based on your bust measurement. If your waist and hip measurements are wider than what's in the size chart, check the waist and hem measurements in the chart below to make sure there's still enough room or whether the pattern will need to be altered. It's easy to do. Just trace the pattern, and instead of tracing the line for the smaller size, trace the line for the larger size.



pattern measurements (in cm)



— shorten or lengthen the pattern here

This chart's measurements are the pattern measurements based on the fabric type and serve as a reference. Ease has been added to the width measurements (in addition to the exact body measurements) for a more comfortable fit. Ivory is designed to have a loose cut.. Depending on the preferred cut, you could possibly go a size smaller or larger than the size chosen.

Compare the stated lengths to the measured or desired lengths. Lengthen or shorten the dress and/or the sleeves by cutting the pattern pieces at the indicated double lines. Then either increase the distance between the cut pieces by the desired amount (to lengthen), or overlap the pieces (to shorten). Make sure that the CF and CB lines and the side seams are always straight.

| size | 4 | 6 | 8 | 10 | 12 | 14 | 16 | 18 | 20 | 22 | 24 | 26 | 28 | 30 |
|--------------------|--------|--------|-------|-------|--------|--------|--------|--------|-------|--------|-------|--------|--------|--------|
| length | 120.25 | 120.75 | 121.5 | 122 | 122.5 | 123 | 123.5 | 124.25 | 126 | 126.75 | 127.5 | 128.25 | 129.25 | 130 |
| sleeve length* | 72.75 | 73 | 73.25 | 73.5 | 73.75 | 74.25 | 74.5 | 74.75 | 75.25 | 75.5 | 76 | 76.25 | 76.75 | 77.25 |
| bust | 84.25 | 88.25 | 92.25 | 96.25 | 100.25 | 104.25 | 108.25 | 112.5 | 118.5 | 124.5 | 130.5 | 136.5 | 142.5 | 148.75 |
| waist | 95 | 97 | 99 | 103 | 107 | 111 | 113 | 117 | 123.5 | 130 | 136.5 | 143 | 149.5 | 156 |
| hips | 106.5 | 108.5 | 110.5 | 114.5 | 118.5 | 122.5 | 124.5 | 128.5 | 135 | 141.5 | 148 | 154.5 | 161 | 167.5 |
| cuff circumference | 19 | 19.5 | 20 | 20.5 | 21 | 21.5 | 22 | 22.5 | 23 | 23.5 | 24 | 24.5 | 25 | 25.5 |

* Including the shoulder length and cuff.

IMPORTANT

Adjust the amount of fabric to be used based on the alterations.



supplies



- Thread
- Iron-on interfacing: max. 130 cm
- Snaps/buttons (Ø 1.1 cm): 17
- Fabric: see table

| fabric | | 4 | 6 | 8 | 10 | 12 | 14 | 16 | 18 | 20 | 22 | 24 | 26 | 28 | 30 |
|---------------------|----|-----|-----|-----|-----|-----|-----|-----|-----|-----|-----|-----|-----|-----|-----|
| fabric width 110 cm | cm | 350 | 355 | 360 | 400 | 405 | 410 | 415 | 415 | 425 | 505 | 515 | 525 | 530 | 550 |
| fabric width 140 cm | cm | 275 | 275 | 280 | 280 | 310 | 310 | 315 | 320 | 380 | 385 | 385 | 385 | 390 | 395 |

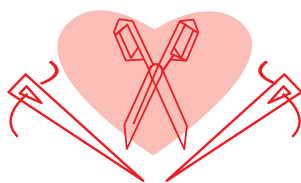
The corresponding fabric layout can be found on page 6 of these sewing instructions.

fabric advice



To create the 'it' look, go for denim, suede or soft leather. Fabric with a fluid drape, whether it's shiny or not, such as viscose, crepe, rayon, satin or (faux) silk work too, but the overall look will be totally different.

Proud to be #Sewista



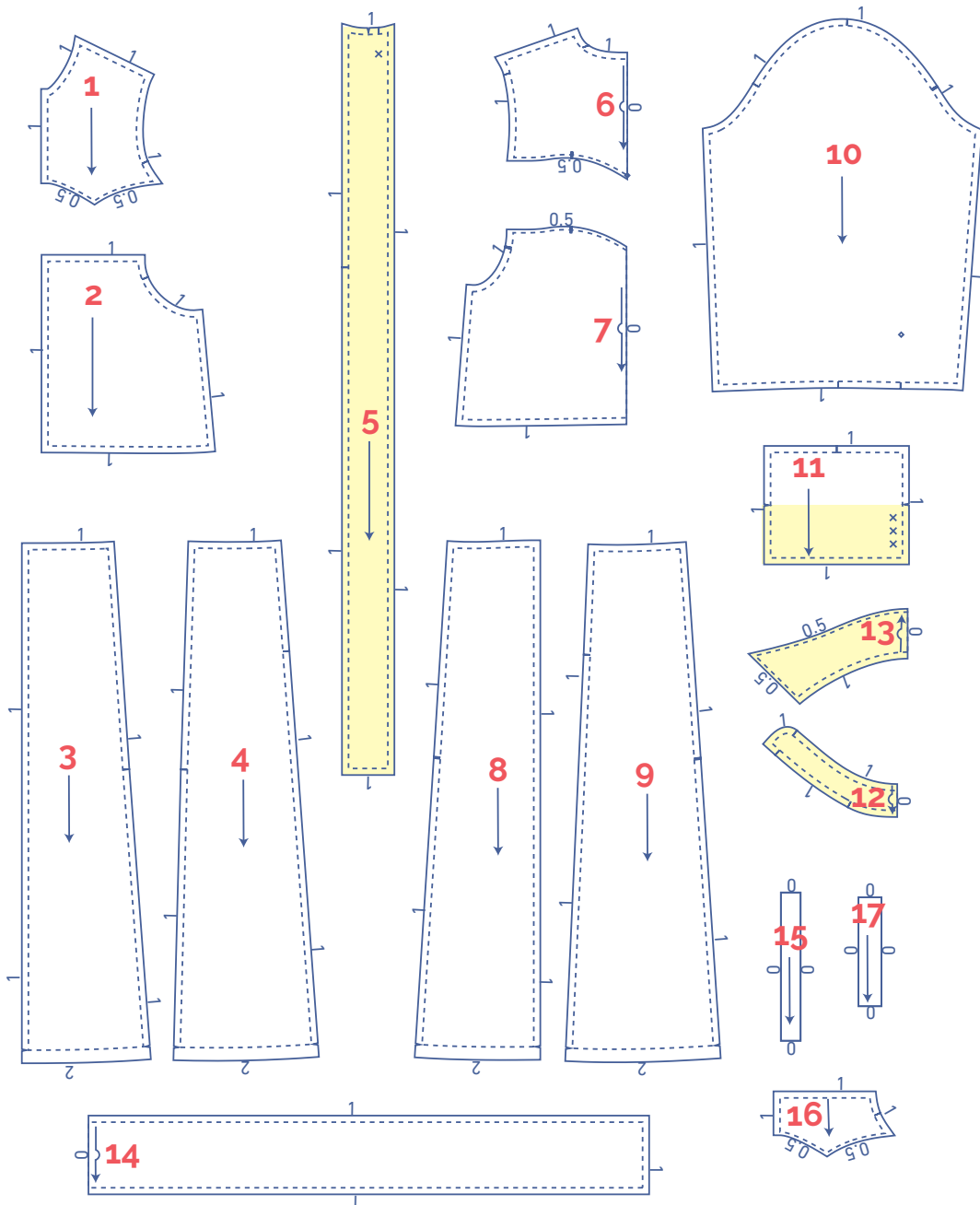
pattern pieces & seam allowances (in cm)




To sew the garment as described in the instructions, you must draw the illustrated seam allowances around the paper pattern pieces before cutting them out.

1. top front: 2x
2. front: 2x
3. skirt front: 2x
4. skirt front side: 2x
5. button placket: 2x
6. top back: 1x on fabric fold
7. back: 1x on fabric fold
8. skirt back: 2x
9. skirt back side: 2x
10. sleeve: 2x
11. cuff: 2x
12. collar band: 2x on fabric fold
13. collar: 2x on fabric fold
14. belt: 1x on fabric fold
15. belt loops: 1x
16. facing front top: 2x
17. arm split bias strip: 2x

IMPORTANT

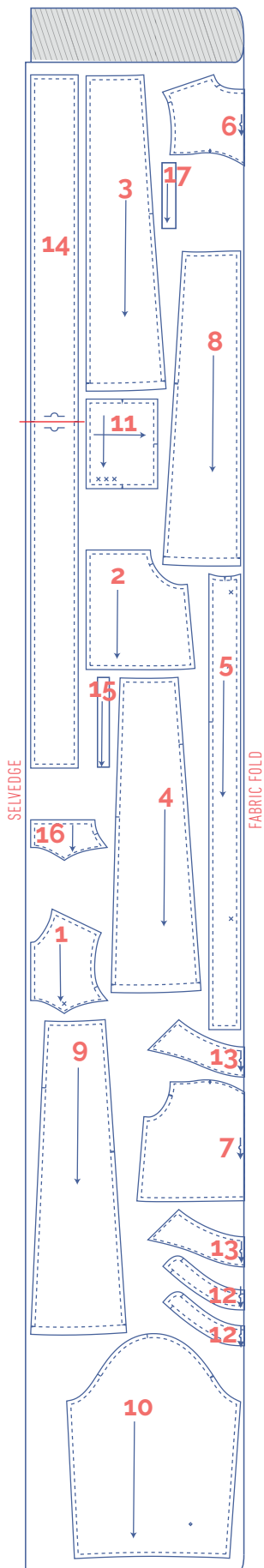
The pieces highlighted in light yellow have iron-on interfacing attached to the wrong side.



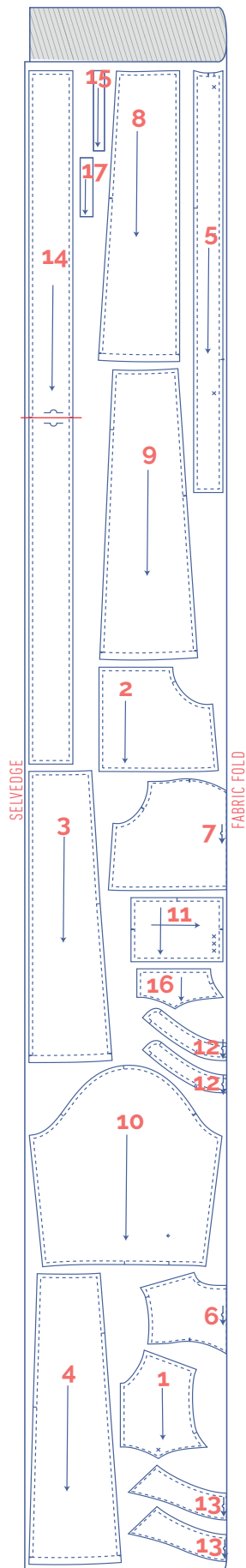
|  | material type |
|---------------------------------------------------------------------------------------|---------------------|
|  | fabric |
|  | iron-on interfacing |

fabric layout – solid fabrics
fabric width 110 cm

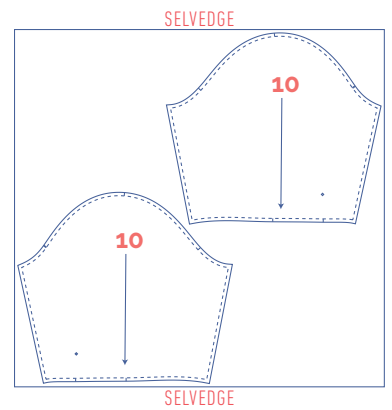
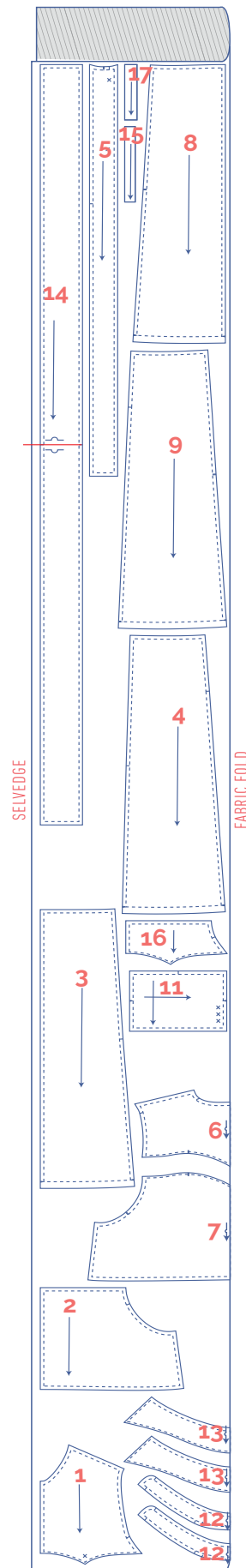
4 - 10



12 - 20



22 - 30



IMPORTANT

You only need pattern pieces 14 and 15 once.

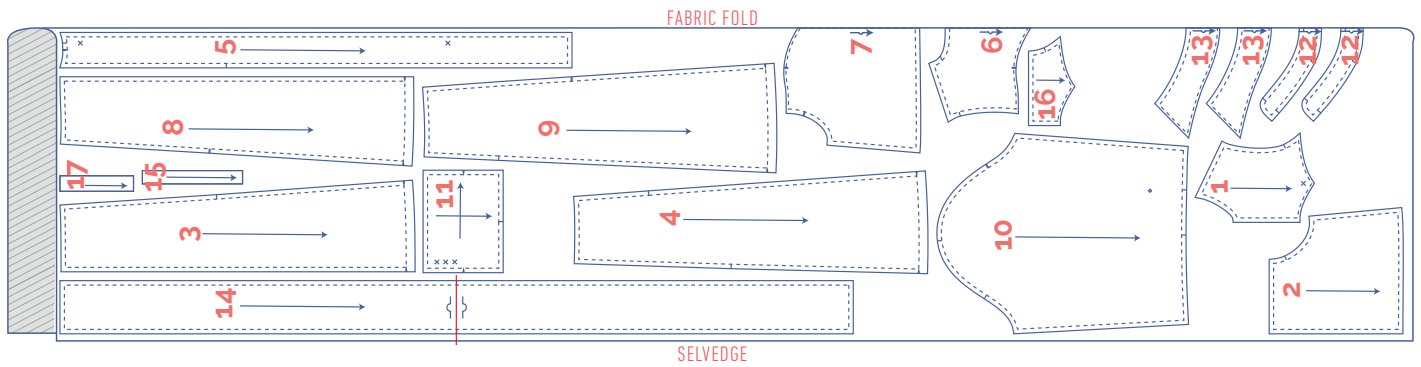
fabric layout – solid fabrics

fabric width 140 cm

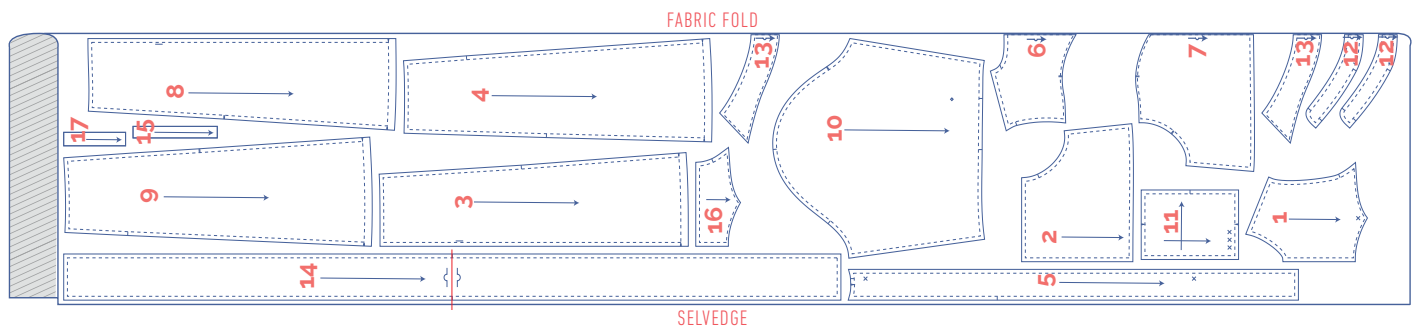
IMPORTANT

You only need pattern pieces 14 and 15 once.

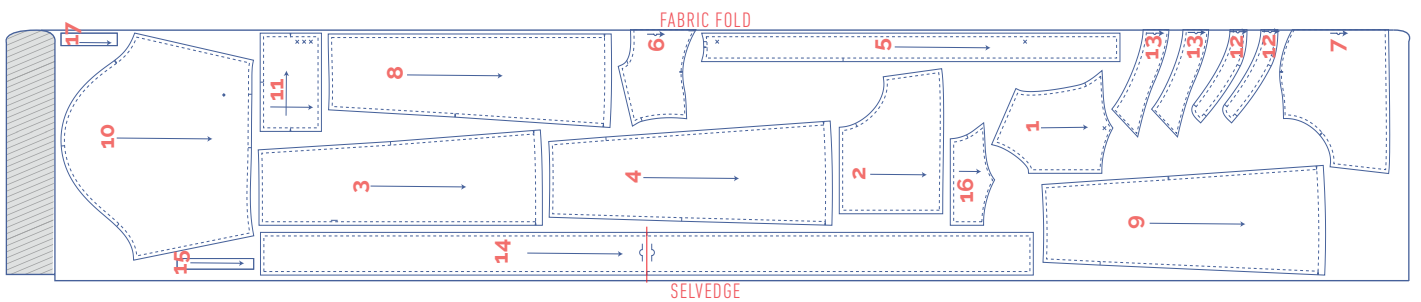
4 - 12











14 - 24



26 - 30



marking pattern pieces

| | |
|------------------------------------------------------------------------------------------------------------------------------------------------|------------------------------------------------------------------------------------------------------------------------------------|
|  notch the pattern paper and fabric at the following points |  mark the following points using marking thread |
|  single notch |  centre point |
|  double notch |  snap/button |
|  V notch |  buttonhole |

sewing instructions



The method used to finish sewing the garment depends on the fabric used. The pieces are always sewn together with the right sides of the fabric facing together, unless stated otherwise.

F front

B back

CF centre front

CB centre back



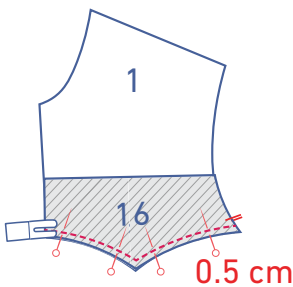
right side



wrong side

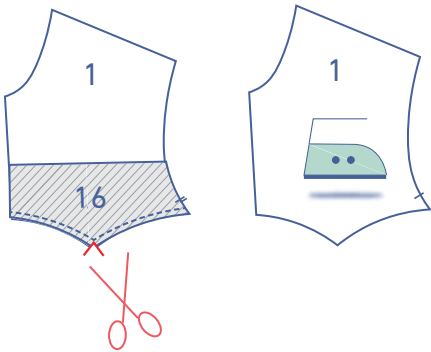


iron-on interfacing

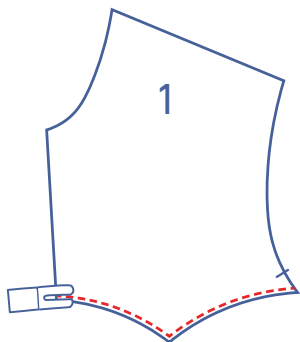


1

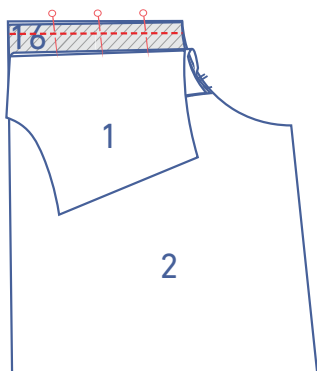
Place the top's front facing (16) over the top front (1) and sew into place at 0.5 cm from the raw edge.



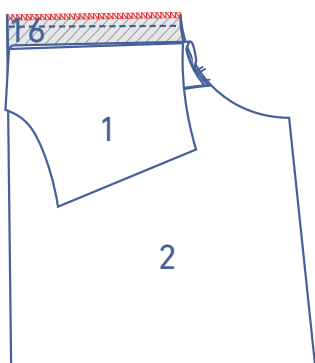
Trim the seam allowance in the corner and turn the right way out.



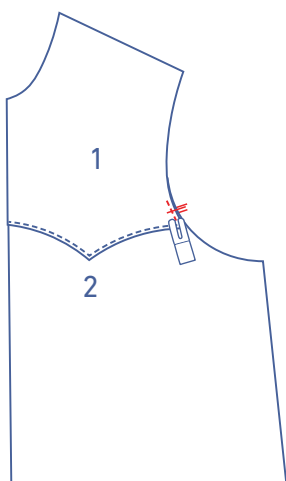
Topstitch right next to the edge.



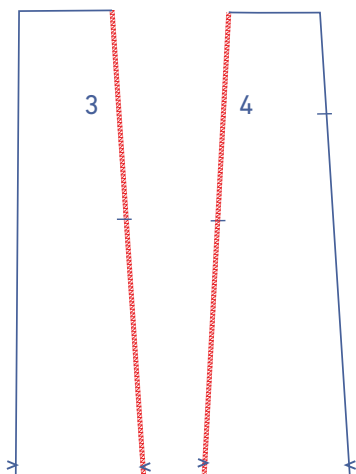
Fold the top front over. Align the straight end of the top's front facing with the straight end of the front (2).



Sew the straight edge. Finish the raw edges together with overlock stitching.

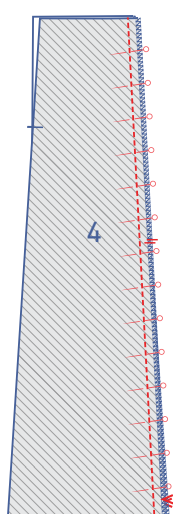


Pin the top front +facing to the front with the corresponding markings matching. Sew into place at 0.5 cm from the raw edge.

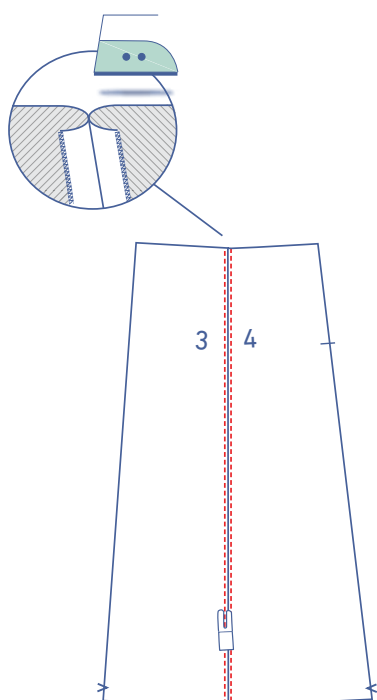


2

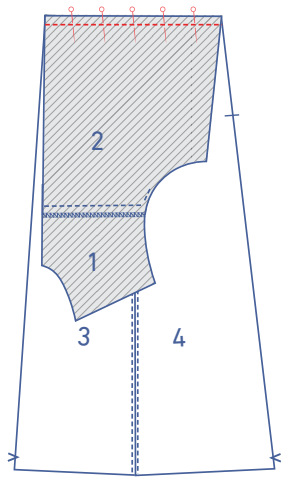
Finish the sides with the single notch on the skirt front (3) and skirt front side (4) pieces with overlock stitching.



Pin and sew the skirt front and skirt front side pieces with the corresponding notches neatly aligned.

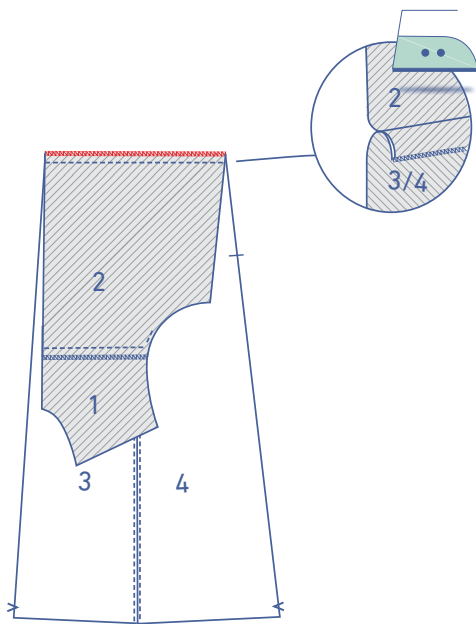


Press the seam allowance open and topstitch along both sides of the seam.

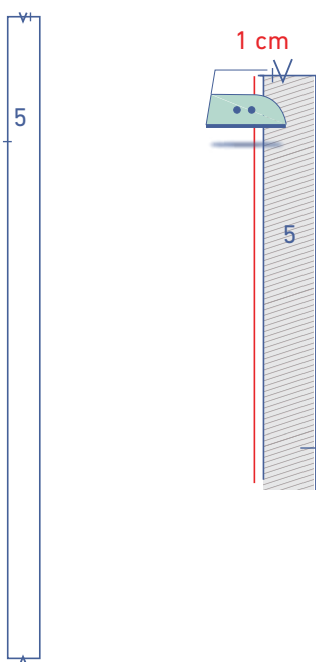


3

Pin and sew the front skirt pieces and the top front together.

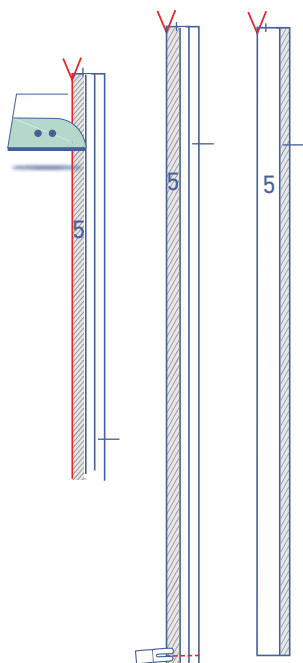


Finish the raw edges with overlock stitching and press the seam allowance onto the skirt side.



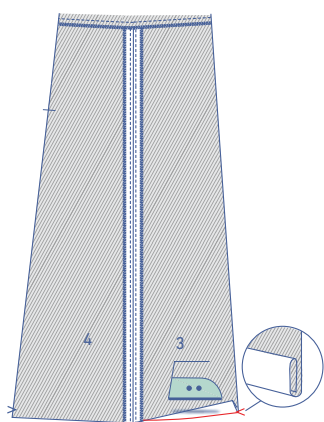
4

Press 1 cm of seam allowance on the long side of the button placket (5) without a notch onto the wrong side.

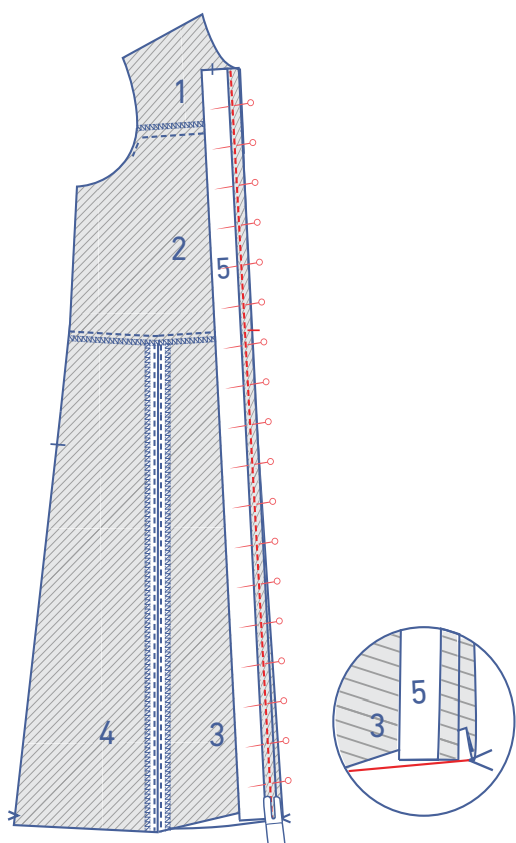


Fold the button placket in half at the V notches with the right side together.

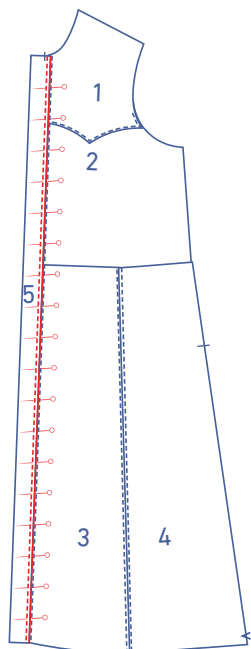
Sew the short side at bottom. Turn the right way out.



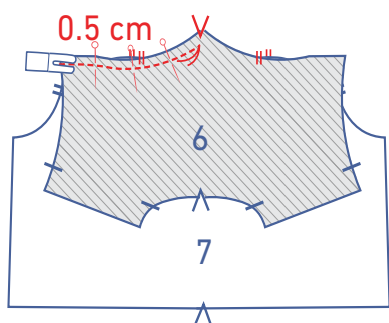
Press the hem allowance of the front and CF onto the wrong side at the V notch. Then fold over once more and press.



Pin and sew the unpressed raw end of the button placket to the wrong side of the completed front piece. The single notch on the button placket should line up with the waist seam. The finished bottom of the button placket should line up with the pre-pressed fold line of the front which indicates the finished hem (the pressed hem allowance of the front is sandwiched between the front and the button placket.).

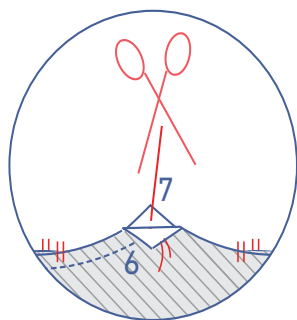


Fold the button placket over onto the right side of the garment and place the fold line of the pressed over seam allowance directly over the previous stitching. Sew into place right next to the edge.

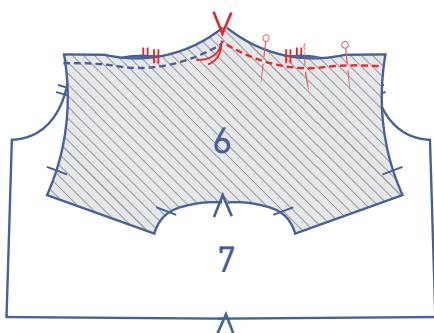


5

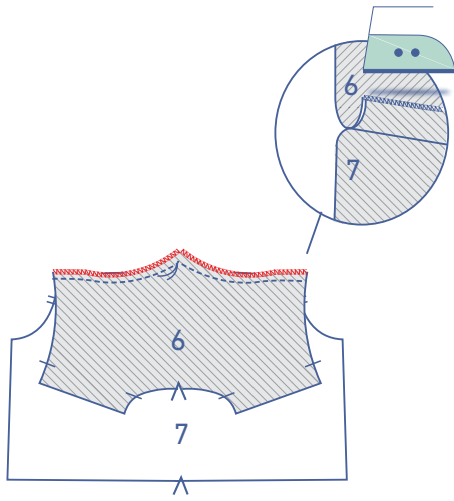
Pin the back top piece (6) to the back (7) with the corresponding markings matching. Sew at 0.5 cm up to the marking thread. Leave the needle lowered in the fabric.



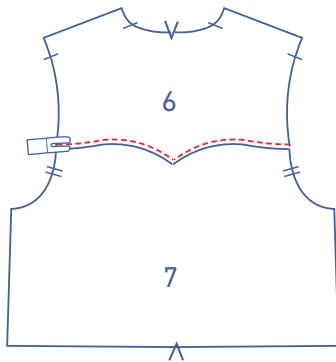
Raise the presser foot and snip into the seam allowance of the back until just before the needle. Turn the piece and lower the presser foot back down.



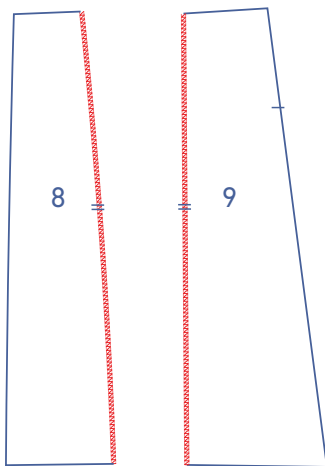
Continue sewing at 0.5 cm.



Finish the raw edges and press the seam allowance towards the back top piece.

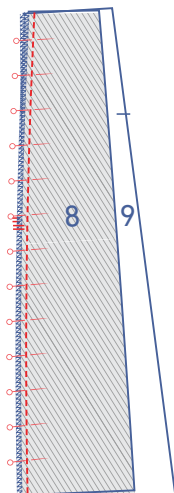


Topstitch the back top piece right next to the edge.

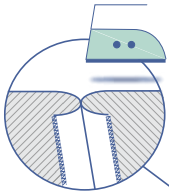


6

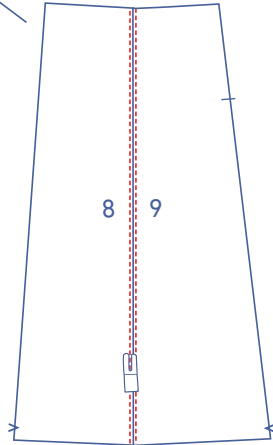
Finish the side with the double notch on the skirt back (8), skirt back side (9) pieces with overlock stitching.



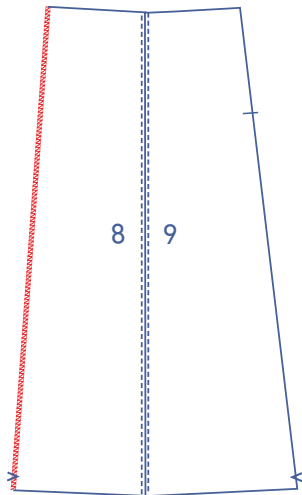
Pin and sew the skirt back and skirt back side pieces with the corresponding markings neatly aligned.



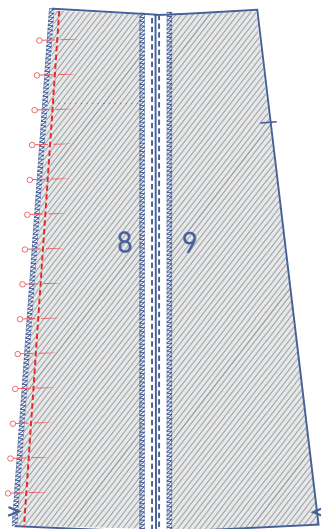
Press the seam allowance open and topstitch along both sides of the seam.

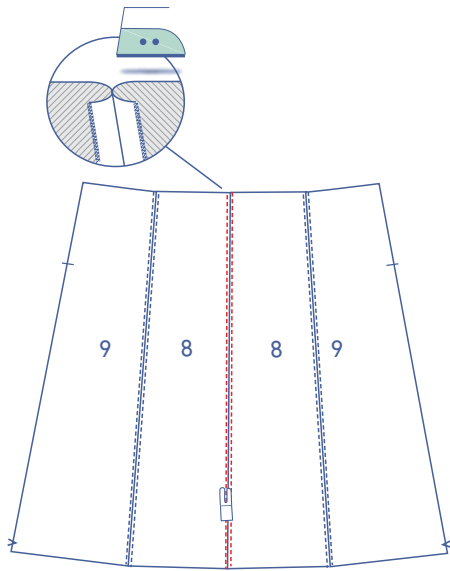


Finish the CB seams with overlock stitching.

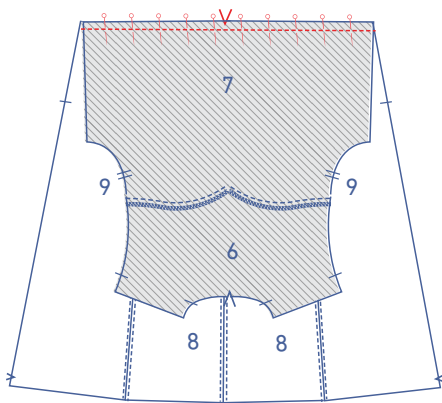


Now join together the back skirt. Pin and sew the CB seam.



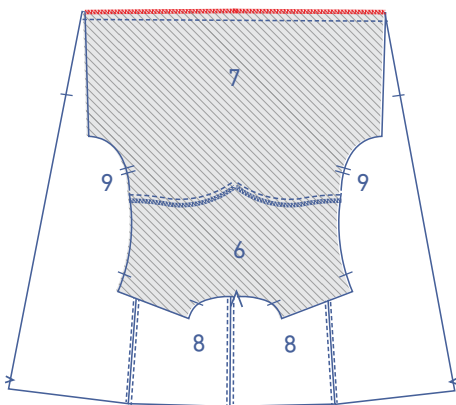


Press the seam allowance open and topstitch along both sides of the seam.

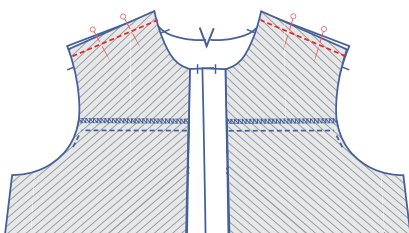


7

Pin and sew the back skirt pieces and the top back together.

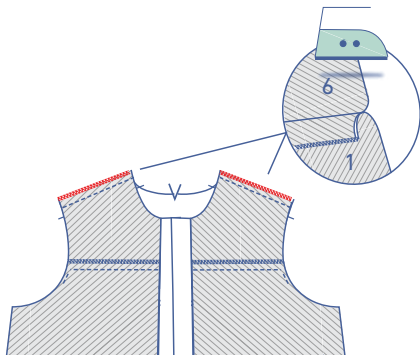


Finish the raw edges with overlock stitching and press the seam allowance towards the skirt.

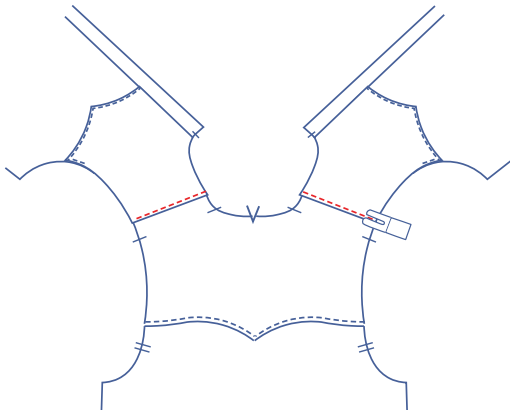


8

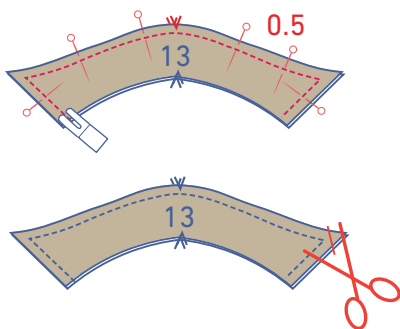
Now join the front and back. Pin and sew the shoulder seams.



Finish the raw edges together with overlock stitching and press the seam allowance towards the top front.

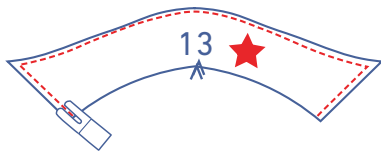


Topstitch the front top piece right next to the edge.

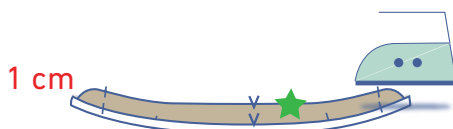
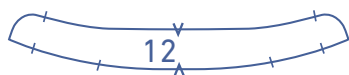


9

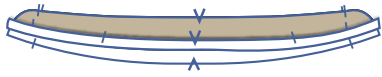
Place the collar pieces (13) together, right sides together. Sew the three sides as indicated. Trim the seam allowance in the corners.



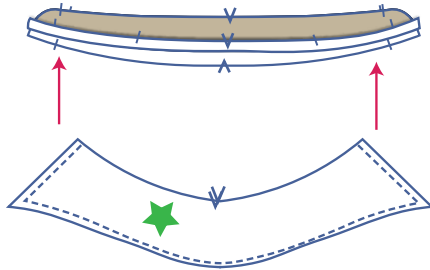
Turn the right way out and press the collars neatly together. Topstitch around the three sides next to the edge. The top of the collar (= visible when wearing the dress) has been marked with a red star. The bottom has been marked with a green star.



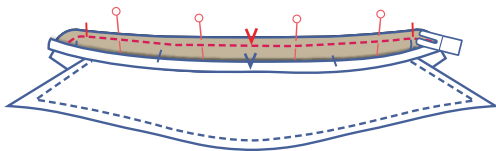
Press one of the two collar bands (12) at the bottom 1 cm over to the wrong side.



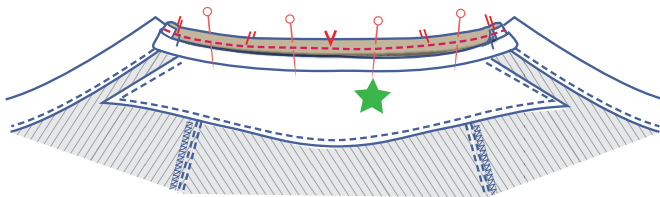
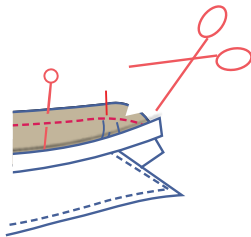
Place the collar band with the pressed over side on top of the other collar band (right sides together).



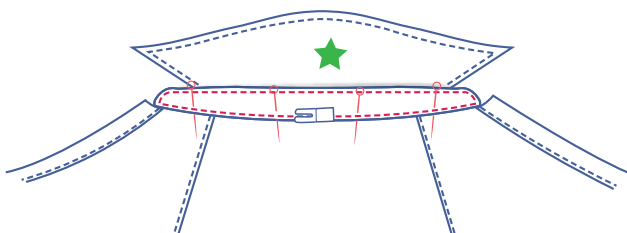
Slide the collar (with the undercollar facing up) between the 2 collar bands and line up the raw edges.



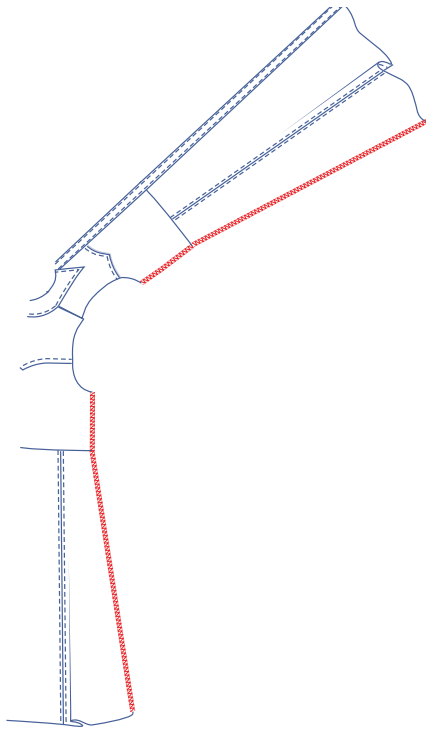
Pin and sew the raw edges of all collar pieces together. Grade and trim the seam allowances in the curves to reduce bulk. Now, turn the collar bands the right way out.



Pin and sew the unpressed bottom of the collar band to the neckline along the wrong side of the dress with the corresponding markings matching.

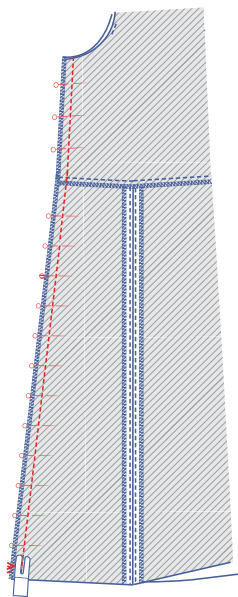


Fold the collar band with the bottom that has been pressed over onto the right side of the garment. The fold line should lie precisely over the previous row of stitching. Pin and sew into place just next to the edge. Finish the topstitching around the collar band.

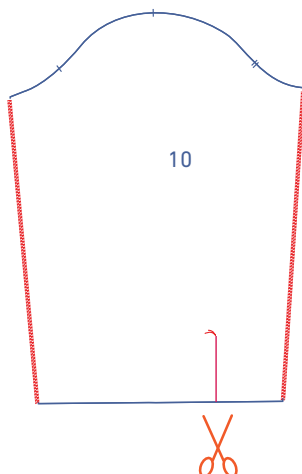


10

Finish the side seams of the front and back with overlock stitching.

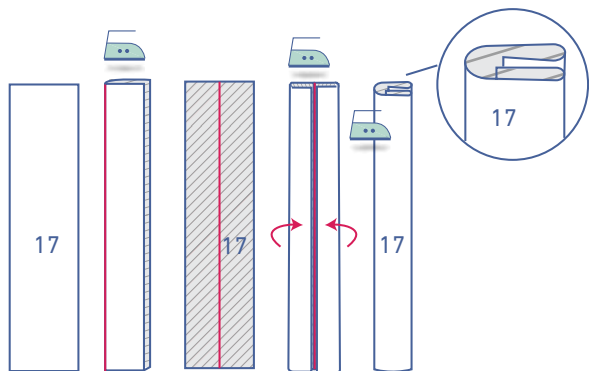


Pin and sew the side seams of the front and back and press the seam allowance open.



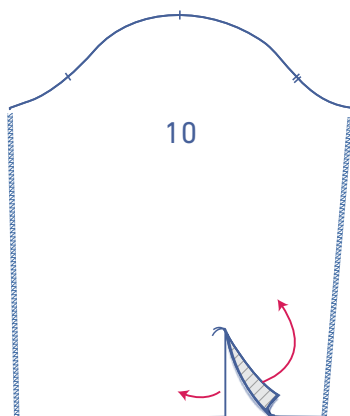
11

Finish the sides of the sleeve (10) with overlock stitching. Snip into the sleeve from the notch on the hem up to the marking thread.

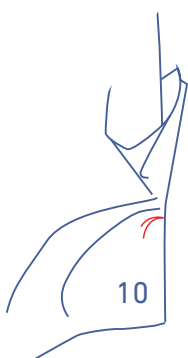


Press the placket split (17) as follows:

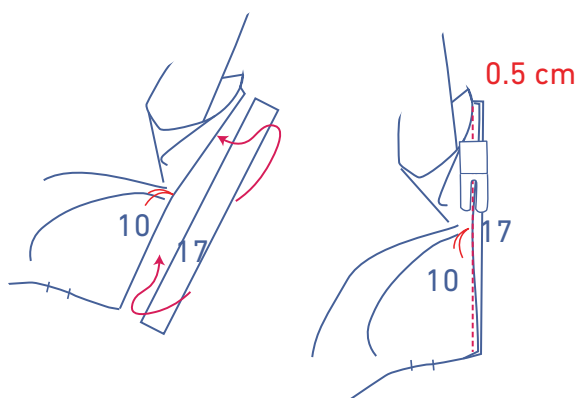
- First, press in half lengthwise all the way down to create a fold line.
- Now press the long ends in so that the raw edges line up down the centre of the fold line. Open up the piece again.

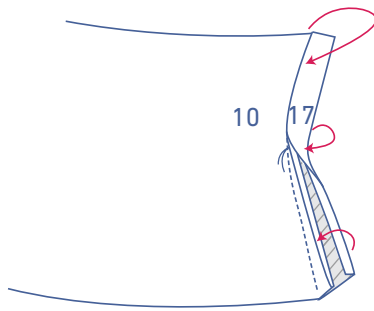


Open the sleeve split so that you end up with a single straight line.

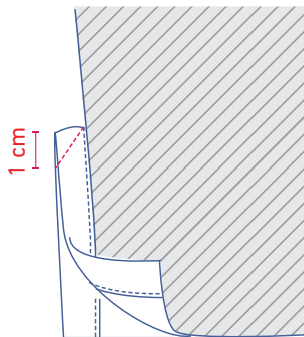
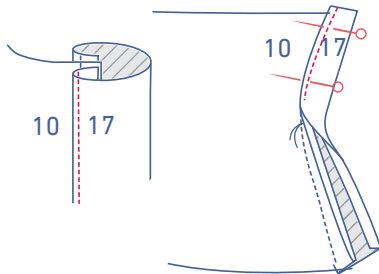


Slide the placket strip under the sleeve with the right side facing up. Line up one long end of the strip with the edge of the arm split and pull the sleeve a little towards the strip at the marking thread. Sew into place at 0.5 cm. You'll only have sewn a tiny bit of fabric at the marking thread.

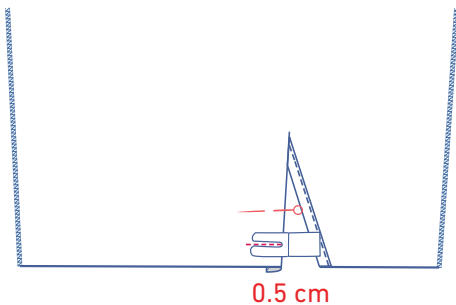




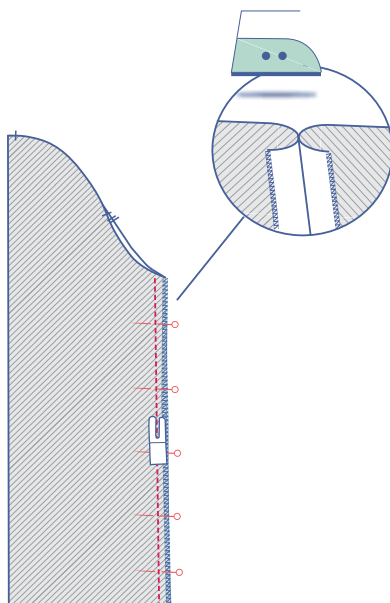
Fold the trim onto the right side of the sleeve and place the pressed fold line directly over the stitching. Sew into place right next to the edge.



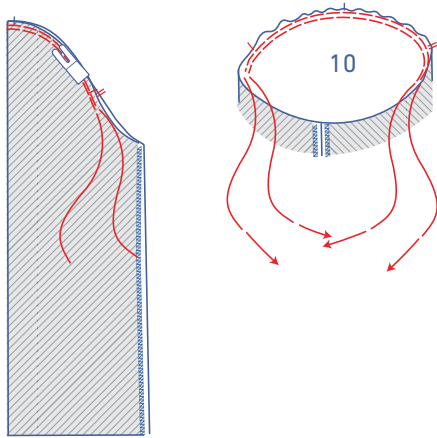
Fold the sleeve in half crosswise, with the right side facing inwards. Sew the top of the placket strip together at an angle.



Fold the placket strip at the front of the sleeve (recognisable on the widest end of the sleeve hem) onto the wrong side of the sleeve and sew into place at 0.5 cm from the bottom.

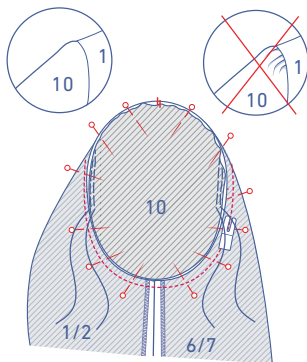


Pin and sew the sleeve sides. Press all of the seam allowance open.

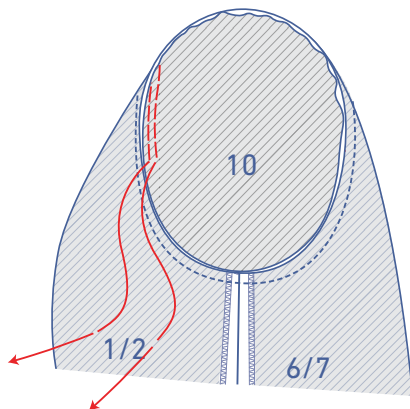


12

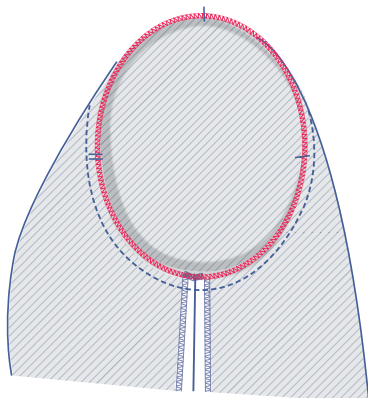
Sew 2 parallel rows of stitching along the top of the sleeve, using a long stitch at a low thread tension. Leave the thread tails long. Sew just past the notches on either side. Carefully tug the gathering threads to gather the fabric. The goal is to distribute the excess fabric, not to create pleats or ruffles!



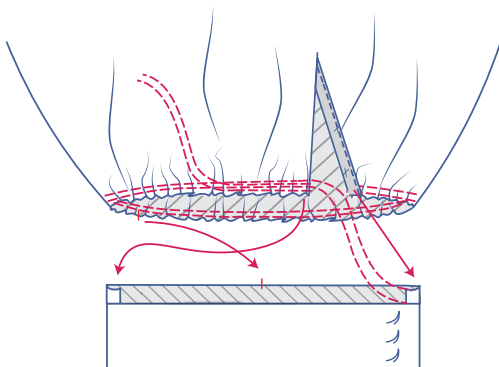
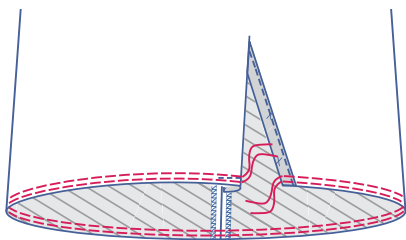
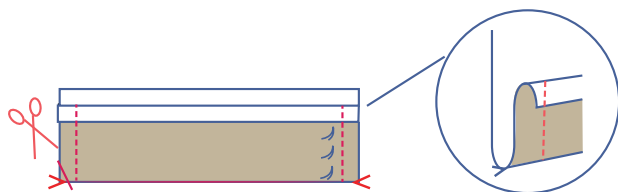
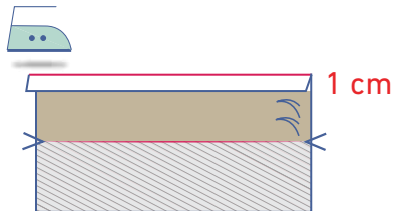
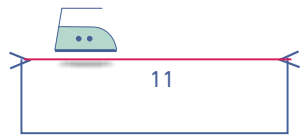
Pin the sleeve cap to the armhole with the corresponding notches matching. The single sleeve notch should match the single notch on the front, and the double notches on the sleeve should match the double notches on the back. The top single notch on the sleeve head matches the single notch on the top back indicating the true shoulder. Distribute the 'excess' fabric between the notches. Sew into place.



Remove the gathering threads.



Finish the raw edges together with overlock stitching.



13

Press the cuff (11) in half lengthwise with the wrong sides together to create a fold line. Open back out again.

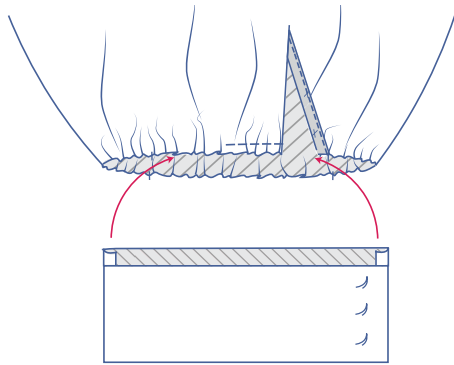
Press one of the long edges onto the wrong side.

Fold the cuff in half along the pressed fold line with the right sides together. Stitch the short ends.

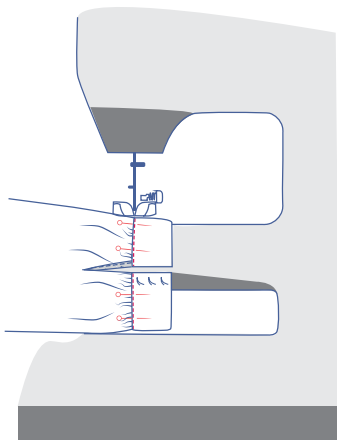
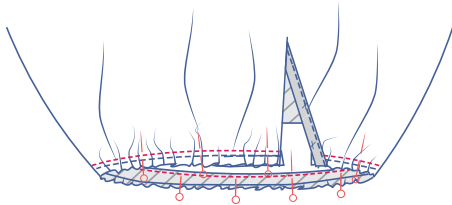
Turn the right way out.

Use a long stitch at a low thread tension to sew 2 parallel rows of stitching at the bottom of the sleeve. Leave the thread tails long.

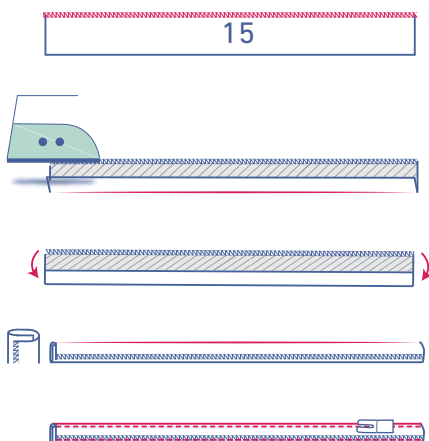
Carefully tug the ends of the gathering threads to gather the fabric into ruffles. The bottom of the sleeve needs to be perfectly aligned with the cuff.



Pin the unpressed raw edge of the cuff to the bottom of the sleeve along the inside (= the wrong side) with the corresponding markings matching. Distribute the ruffles evenly. Sew into place. Remove the gathering threads when you're done.



Turn the cuff onto the right side of the sleeve. Place the fold line directly over the stitching. Sew into place right next to the edge. Finish topstitching all the way around.



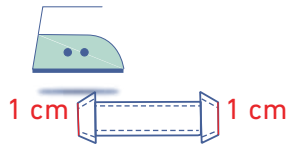
14

Finish one long end of the belt loops (15) with overlock stitching.

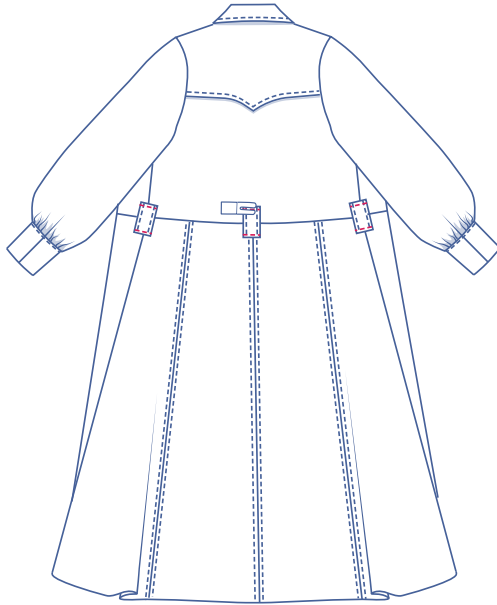
Next, press the unfinished side 0.5 cm towards the wrong side of the fabric. Then fold over the overlocked side and press. Sew together along both sides right next to the edge.



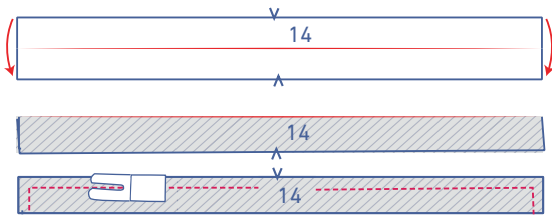
Cut the strip into 3 equal parts.



Fold both ends of the belt loop 1 cm over.



Sew into place right next to the edge at the places indicated on the side seam and the CB seam.

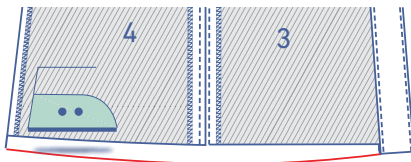


15

Fold the belt (14) in half lengthwise with the right sides facing. Sew into place all the way around, leaving a small opening to turn the belt the right way out.

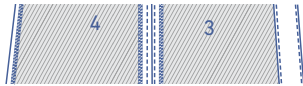
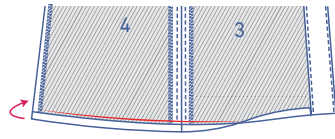
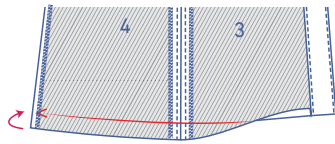


Turn the belt the right way out and topstitch all the way around right next to the edge.



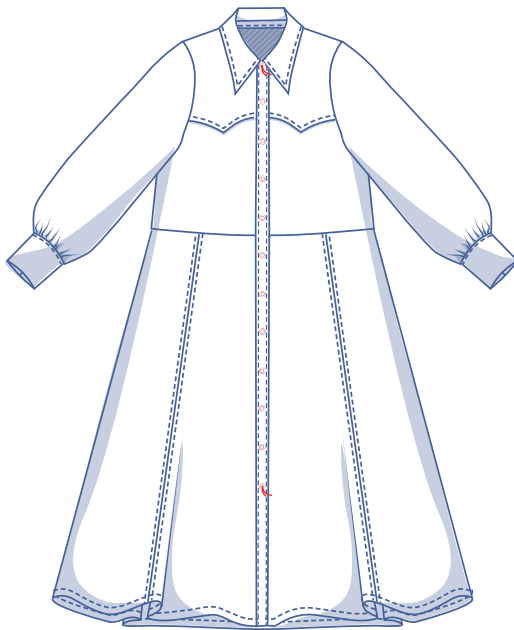
16

Press the hem allowance up to the V notches and then unfold.



Place the raw edge against the pressed fold line and fold over again.

Sew into place next to the edge.



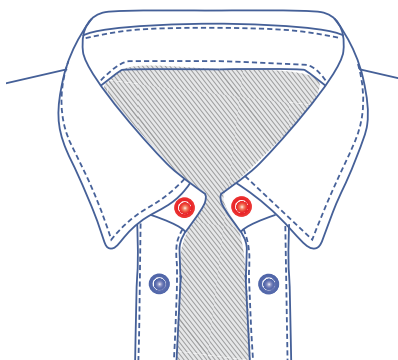
17

Attach the snaps or buttons where indicated on the button placket. The top and bottom button are marked on the pattern.

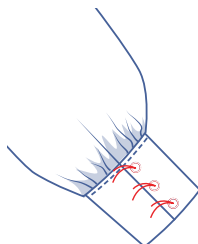
Divide the distance equally to determine the position of the other buttons.

Optional

If you are using buttons, use vertical buttonholes and make sure they align with the buttons. The button should line up with the top 1/3 of the buttonhole.



Attach the snaps or buttons where indicated on the front.



Hand sew the snaps or buttons on the cuff where indicated.

Optional

If using buttons, use horizontal buttonholes. The buttonholes should begin 1cm from the edge.