

Harvey by Fibre ⚡ood



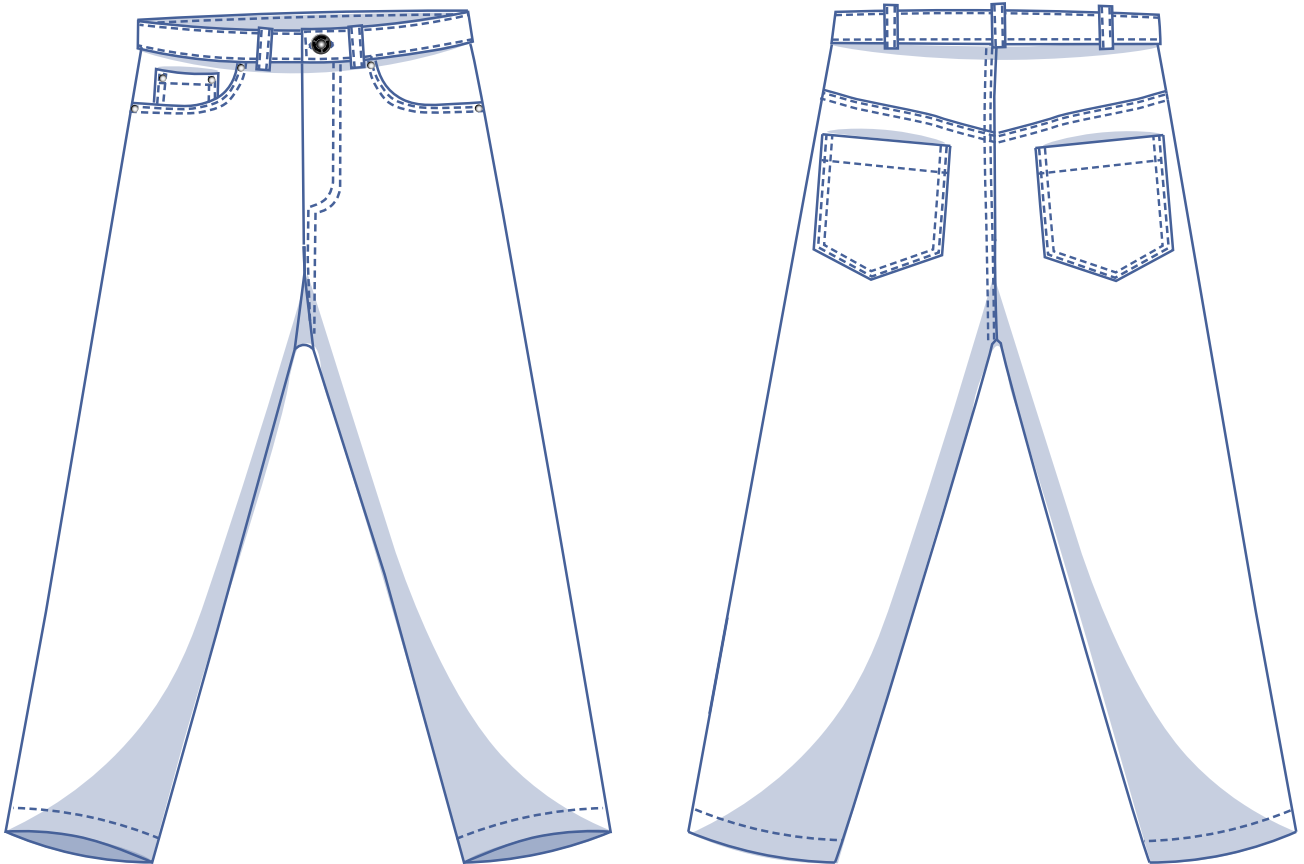
Harvey by Fibre ⚡ood

***✂✂



2 - 14 years

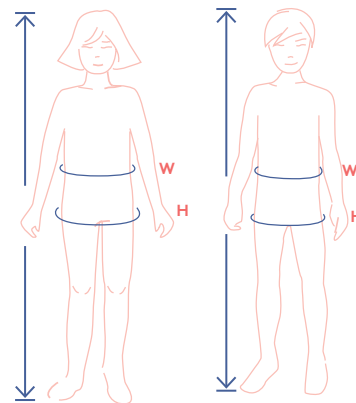
The name says it all: Harvey is tough. These denim trousers for girls and boys up to 14 have all the classic jeans hallmarks of classic jeans: patch pockets on the back and a coin pocket on the front, a yoke on the back, twin needle decorative stitching and authentic jeans buttons. But the nice surprise is that there are no zips! And if you fancy a twinning project? Check out our mom jeans, the [Ebony](#).



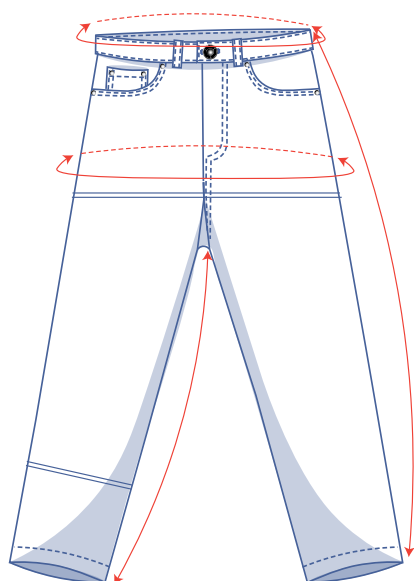
size chart (in cm)

size	2	3	4	5	6	8	10	12	14
body height	92	98	104	110	116	125	137	150	160
W (waist)	50	52	53	54	55	57	60	63	66
H (hip)	56	58	60	62	64	68	72	76	80

Select the size based on the hip measurement (regardless of age or height). Pick the size that is the best match for the hips. The waistline measurement is easy to alter with the buttonhole elastic in the waistband. Next, alter the length of the size you've chosen according to the age or height of your child. You can find this in the table below.



pattern measurements (in cm)



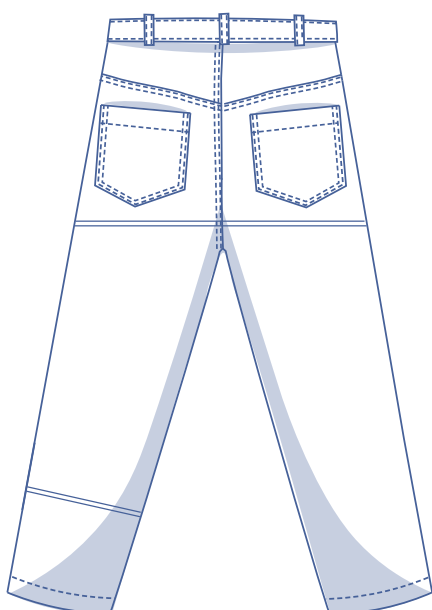
This chart's measurements are the pattern measurements based on the fabric type and serve as a reference. Ease has been added to the width measurements (in addition to the exact body measurements) for a more comfortable fit. Depending on the preferred cut, you could possibly go a size smaller or larger.

size	2	3	4	5	6	8	10	12	14
side length*	47	51	55	59	63	71	79	87	95
inseam length	29.75	33.25	36.75	40.25	43.75	50.75	57.75	64.75	71.75
waistline**	58.5	60.5	61.5	62.5	63.5	65.5	68.5	71.5	74.5
hips	65	66.75	68.5	70.5	72.5	76.25	80	84	87.75
hem circumference	24.75	25.25	25.75	26.25	26.75	27.75	28.75	29.75	30.75

* Including the waistband.

** Waistline measurement without buttonhole elastic.

— shorten or lengthen
the pattern here



Compare the stated lengths to the measured or desired lengths. **Shorten** or **lengthen** the trouser legs and/or rise by cutting the pattern pieces at the indicated double lines. Then either increase the distance between the cut pieces by the desired amount (to lengthen), or overlap the pieces (to shorten). Make sure that the CF and CB lines and the side seams are always straight.



IMPORTANT

Adjust the amount of fabric to be used based on the alterations.

supplies



- Thread
- Iron-on interfacing: max. 25 cm
- Buttonhole elastic: see table
- Jeans buttons (Ø 2.1 cm): 3
- Buttons (Ø 1.1 cm): 2
- Decorative rivets (Ø 0.9 cm): 6
- Lining or lightweight cotton: max. 25 cm
- Fabric: see table

elastic band		2	3	4	5	6	8	10	12	14
length	cm	31	32	32	33	34	35	37	39	40

fabric		2	3	4	5	6	8	10	12	14
fabric width 110 cm	cm	95	100	110	120	130	145	155	165	180
fabric width 140 cm	cm	70	70	70	75	75	85	100	110	120

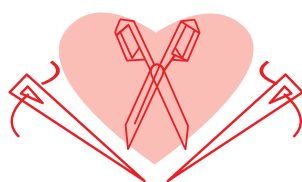
The corresponding fabric layout can be found on page 6 of these sewing instructions.

fabric advice



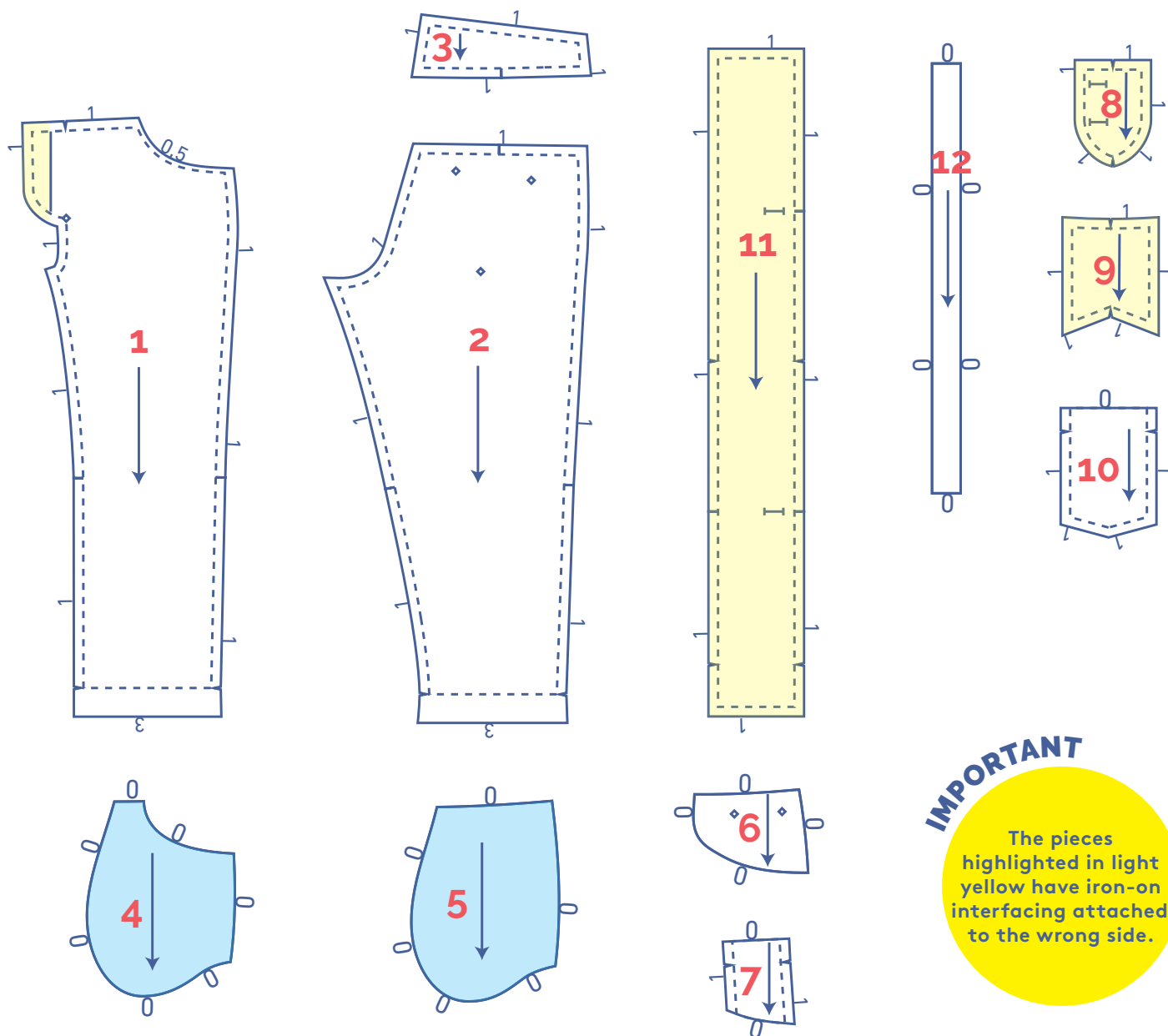
Cotton twill is the best option for these trousers. Use a stretch fabric for a comfier fit. Harvey looks great in loads of solid colours. Feel like something a little more playful? Why not give a striped fabric a shot?

Proud to be #Sewista



pattern pieces & seam allowances (in cm)




To sew the garment as described in the instructions, you must draw the illustrated seam allowances around the paper pattern pieces before cutting them out.



IMPORTANT

The pieces highlighted in light yellow have iron-on interfacing attached to the wrong side.

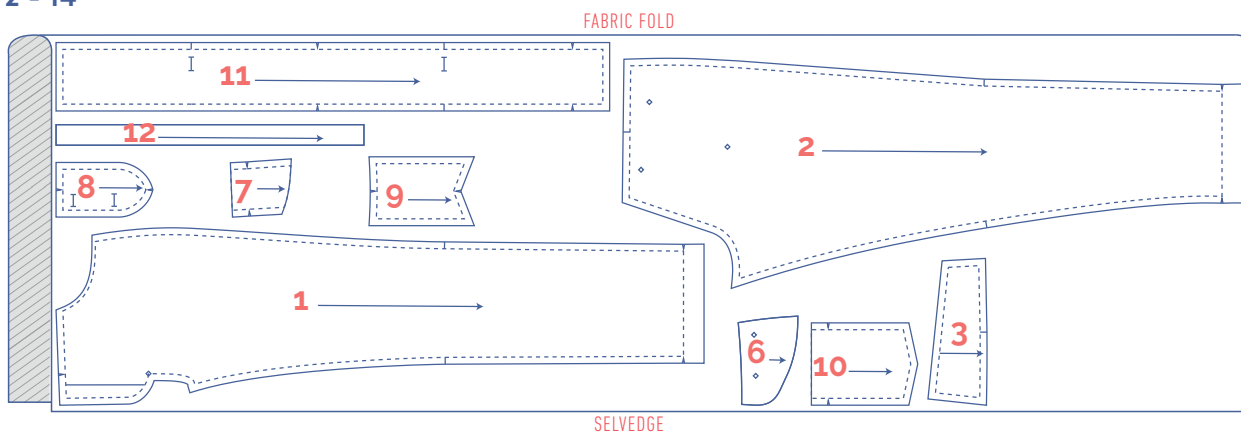
1. front: 2x
2. back: 2x
3. yoke back: 2x
4. inner pocket bag: 2x
5. pocket: 2x
6. pocket opening: 2x
7. watch pocket: 1x
8. buttonhole placket LF: 1x
9. fly RF: 1x
10. pocket back: 2x
11. waistband: 1x
12. belt loops: 1x

?	material type
	fabric
	iron-on interfacing
	lining

fabric layout for a solid fabric and lining or lightweight cotton fabric width 110 cm

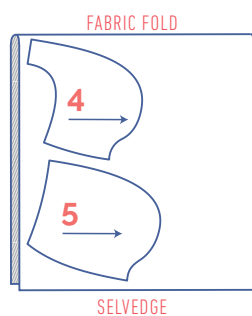
fabric

2 - 14



lining or lightweight cotton

2 - 14



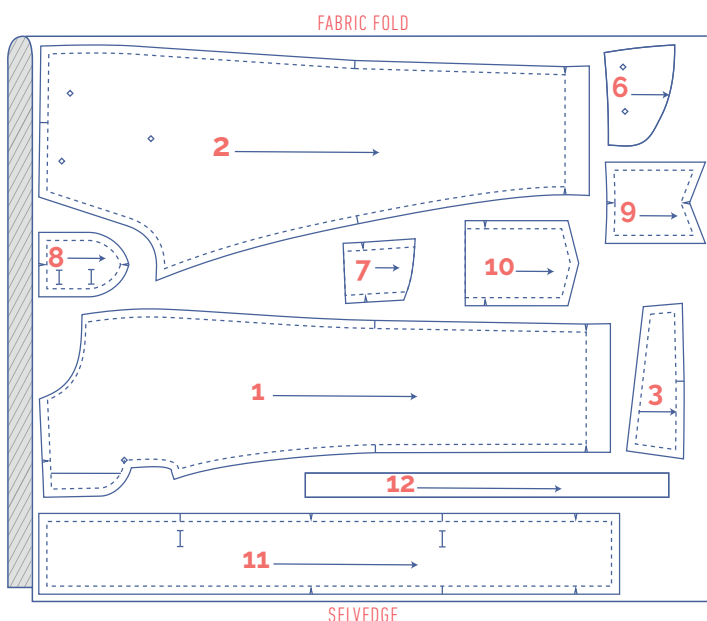
IMPORTANT

pattern pieces 7, 8, 9 and 11 are only needed once.

fabric layout for a solid fabric and lining or lightweight cotton fabric width 140 cm

fabric

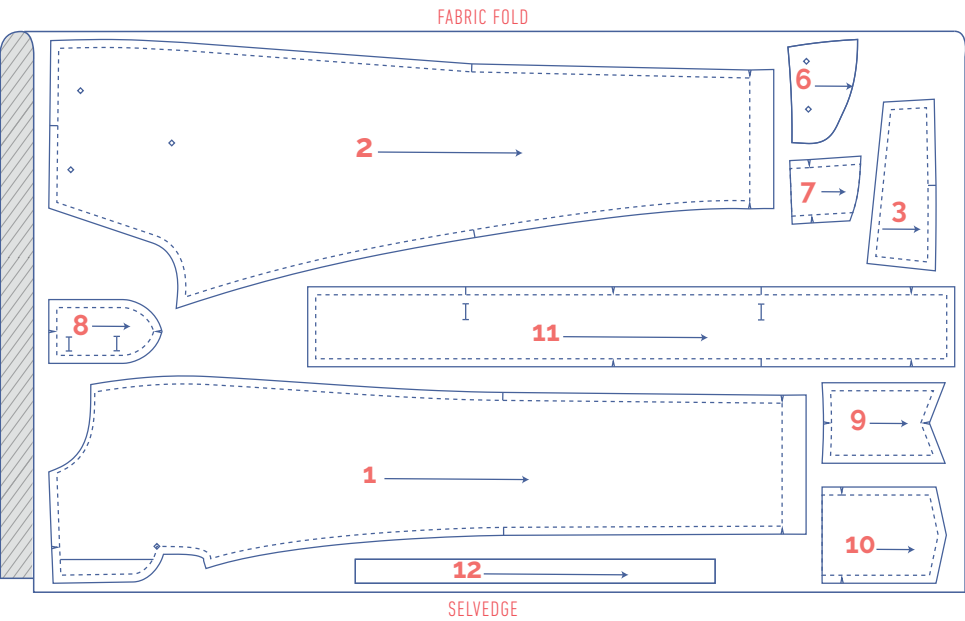
2 - 8



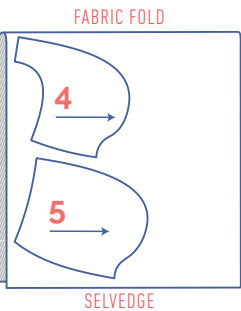
IMPORTANT

pattern pieces 7, 8, 9 and 11 are only needed once.

fabric
10 - 14



lining or lightweight cotton
2 - 14



marking pattern pieces






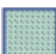
	notch the pattern paper and fabric at the following points
	single notch
	double notch
V	V notch

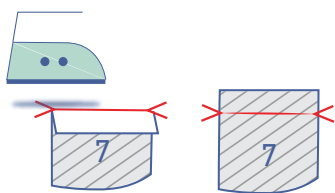
	mark the following points using marking thread
	centre point
	snap/button
	buttonhole

sewing instructions



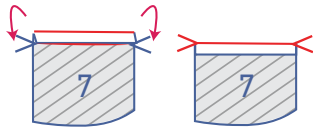
The method used to finish sewing the garment depends on the fabric used. The pieces are always sewn together with the right sides of the fabric facing together, unless stated otherwise.

F	front	
B	back	
RF	right front	●
LF	left front	●
CF	centre front	
CB	centre back	
RB	right back	●
LB	left back	●
	right side	
	wrong side	
	lining right side	
	lining wrong side	
	iron-on interfacing	
	elastic band	



1

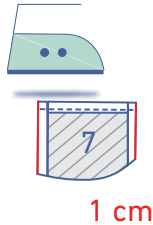
Press the top of the coin pocket (7) at the V notches onto the wrong side. Open back out.



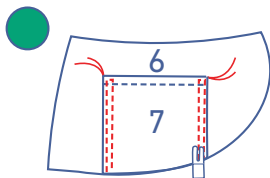
Fold the raw edge up to the pressed fold line and then fold over again on the fold line.



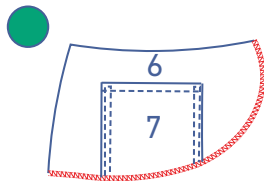
Sew into place right next to the edge.



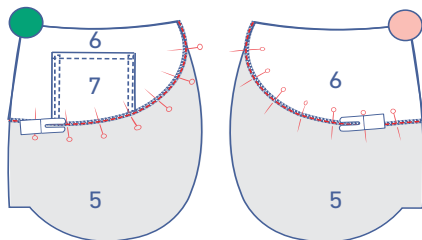
Fold over the indicated sides by 1 cm onto the wrong side and press.



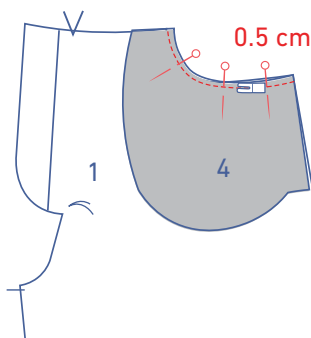
Pin the coin pocket to the pocket opening (6) of the RF at the place indicated. Sew the long sides into place right next to the edge. Topstitch next to the first row of stitching at presser foot width. At the top of the coin pocket, sew a bar tack between the lines of topstitching to reinforce the pocket corners.



Finish the curved edge with overlock stitching.

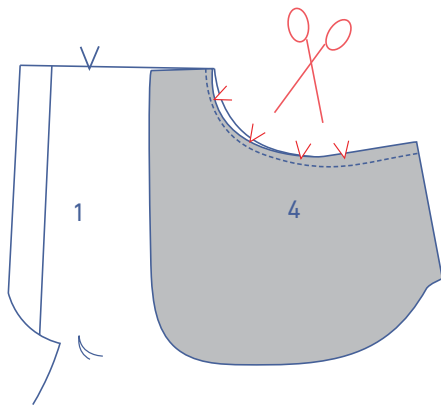


Pin the pocket opening to the front pocket piece (6) so that both pieces have the right sides facing up. Sew the bottom of the pocket opening to the pocket.

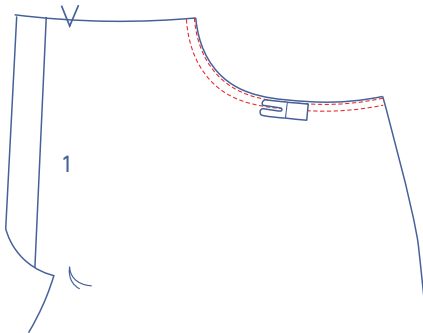


2

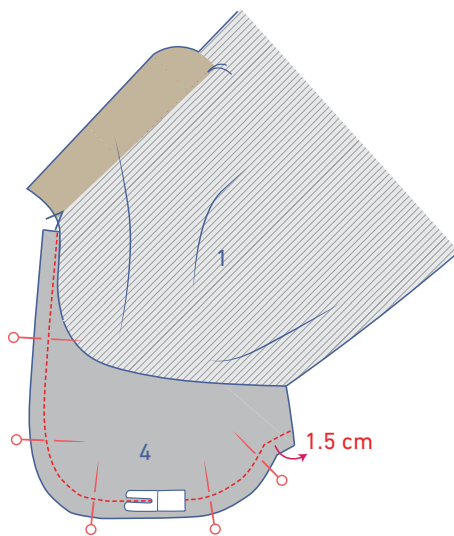
Pin and sew the curved edges of the front (1) and the inner pocket bag (4) together at 0.5 cm.



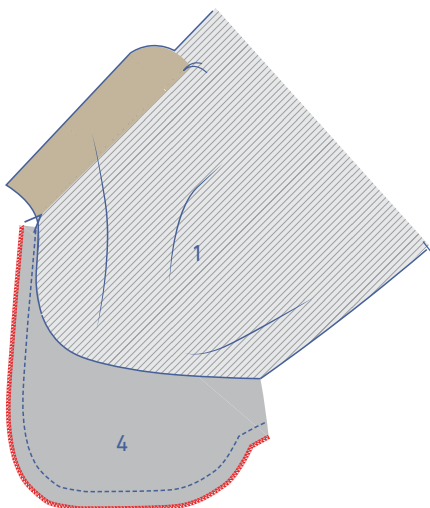
Trim the seam allowance or cut notches out of the seam allowance so that the inner pocket bag lies flat when you turn it to the wrong side.



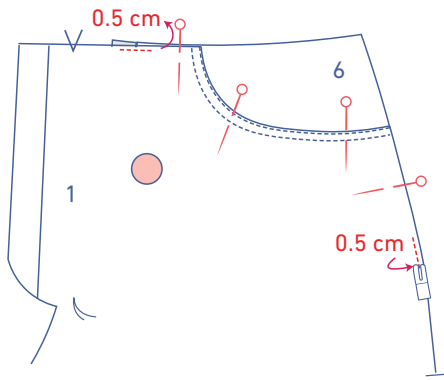
Turn the pocket all the way over to the wrong side. Sew two lines of topstitching along the contoured edge of the pocket.



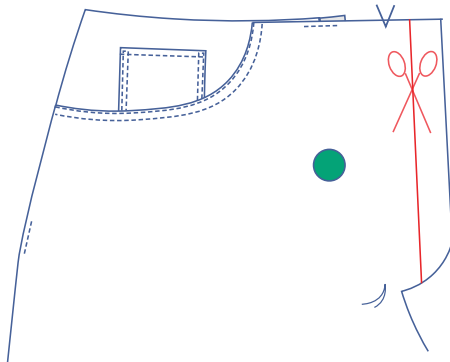
Fold the front up or to the side and neatly pin both pocket pieces together. Sew the curves together at 1.5 cm from the raw edge as indicated.



Finish the raw edges together with overlock stitching.

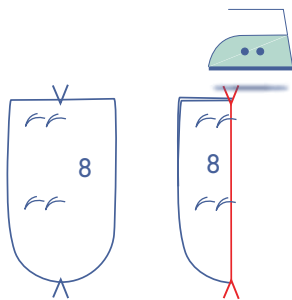


Place the front back where it belongs. Sew the pocket pieces to the front at the top and side at 0.5 cm from the raw edges where indicated.



3

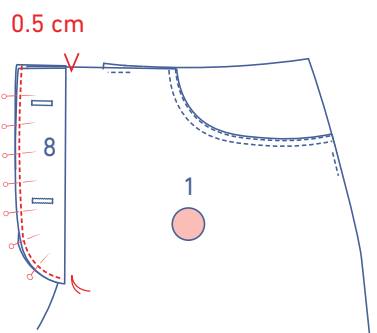
Cut a strip out of the shaped fly on the RF along the indicated line.



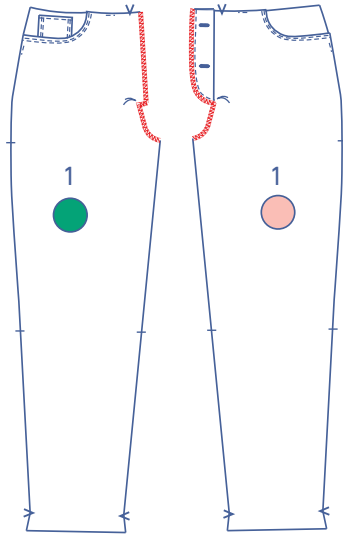
Press the LF buttonhole placket (8) in half lengthwise at the V notches with the wrong sides together.



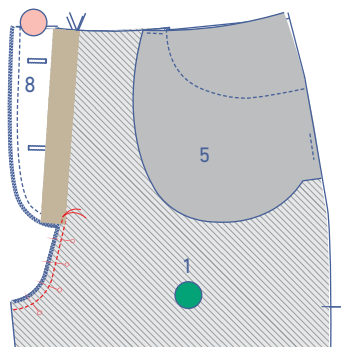
Make horizontal buttonholes at the indicated places.



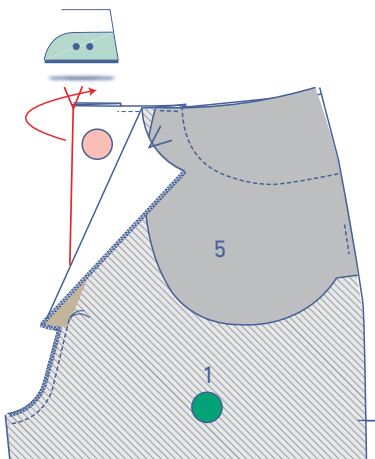
Pin the raw edges of the buttonhole placket to the shaped fly of the LF. Sew into place at 0.5 cm from the raw edge. The finished end of the buttonhole placket should be at the top, just slightly in front of the V notch that indicates the CF. The bottom of the placket should be just next to the marking thread.



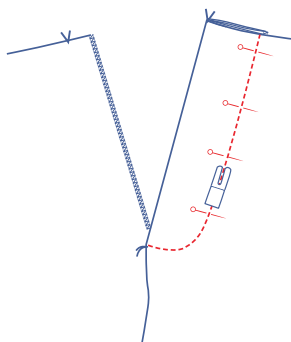
Finish both CF seams with overlock stitching.



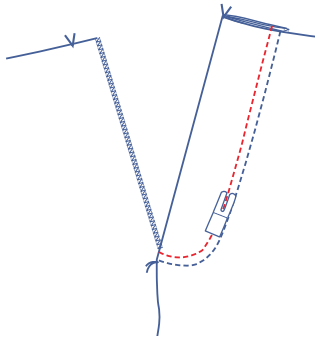
Pin the CF seams together. The shaped fly of the LF (+ buttonhole placket) should extend past the RF. Sew up to the marking thread.



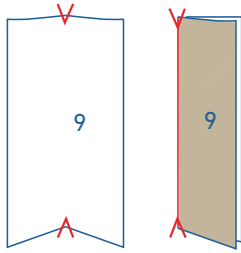
Press the shaped fly + buttonhole placket of the LF over at the V notch.



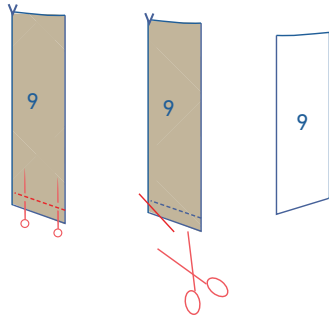
Pin into place and topstitch the right side of the fabric along the edge of the shaped fly through all layers (front + shaped fly + buttonhole placket).



Topstitch at presser foot width next to the first row of stitching.



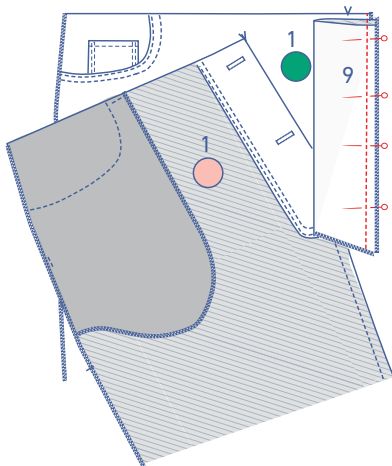
Fold the RF fly (9) in half at the V notches with the right sides of the fabric together.



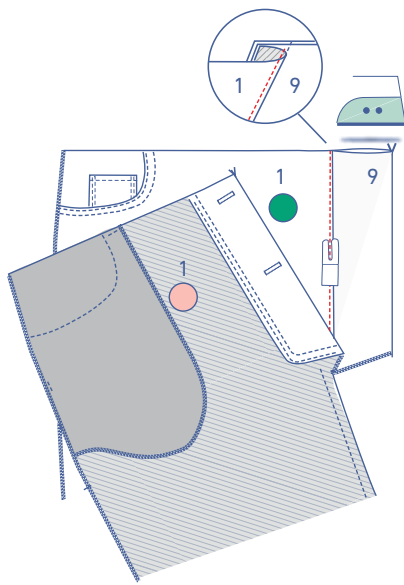
Pin and sew the short, slanted end at the bottom. Trim the seam allowance in the corner and turn the right way out. Press.



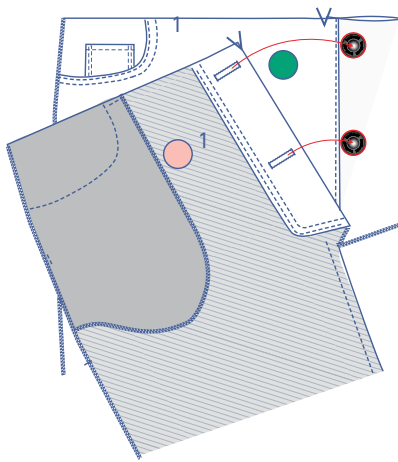
Finish the raw edges on the side with overlock stitching.



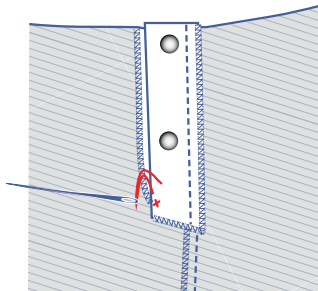
Pin and sew the fly to the seam allowance of the RF.



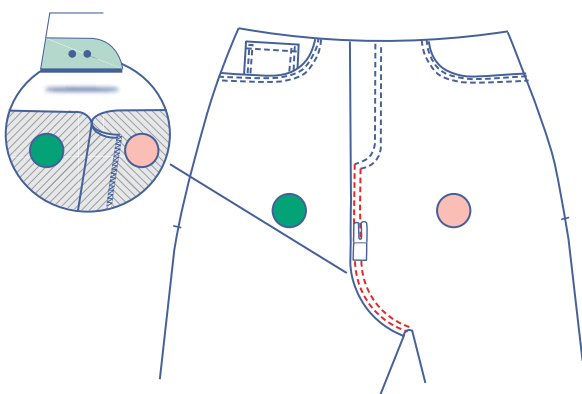
Press the seam allowance onto the RF and stitch right next to the seam through all layers (= RF + seam allowance).



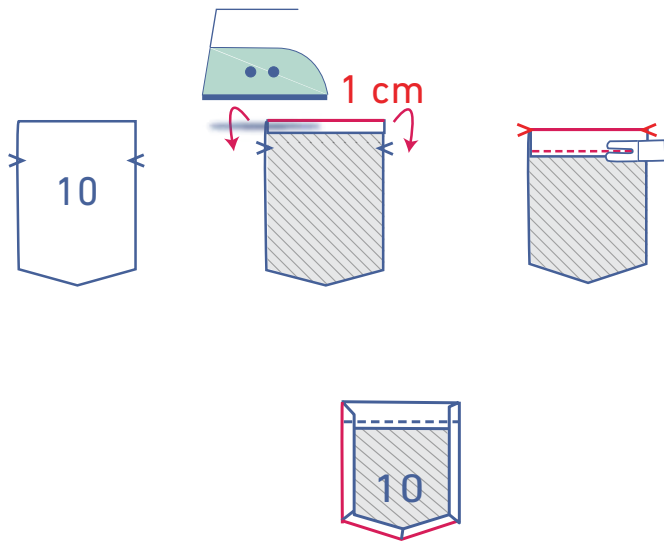
Attach the jeans buttons to the fly of the RF so that they line up with the buttonholes on the LF (make sure that the V notches marking the CF on both pieces line up neatly when the buttons are closed). The buttons should line up with a point on the buttonhole about a third of the way in from the CF side.



Sew the shaped LF fly and the RF fly together at the bottom with just a few stitches.



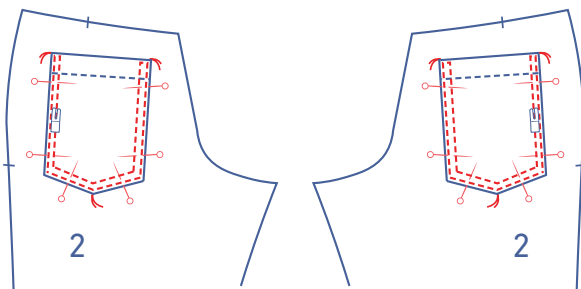
Press the seam allowance of the crotch seam towards the LF. Now, sew two rows of topstitching on the LF, right next to the seam.



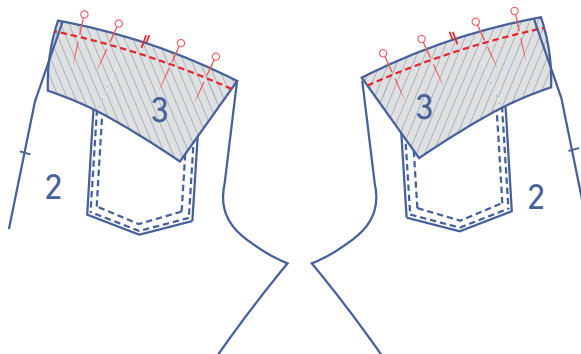
4

Fold the top of the pocket back (10) 1 cm onto the wrong side. Then fold over again at the V notches. Press, then sew into place right next to the edge.

Fold the remaining sides by 1 cm over to the wrong side. Press.

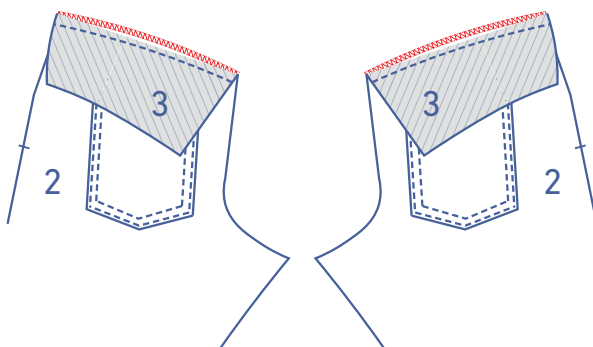


Pin the pocket to the back (2) at the indicated places. Sew into place right next to the edge. Topstitch next to the first row of stitching at presser foot width. At the top of the pocket, sew a bar tack between the lines of topstitching to reinforce the pocket corners.

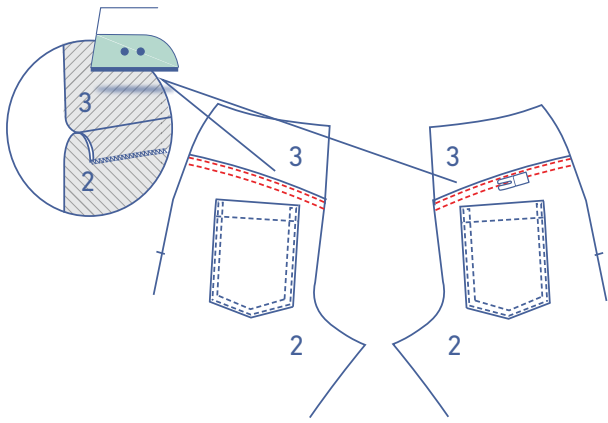


5

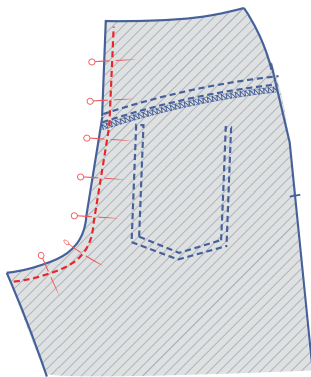
Pin and sew the yoke back (3) to the back with the corresponding notches matching.



Finish the raw edges together with overlock stitching.

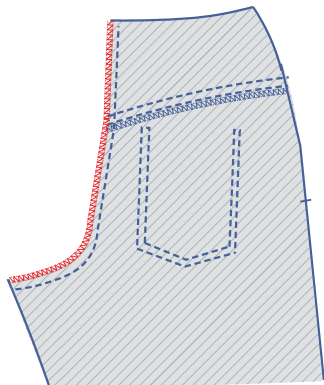


Press the seam allowance down onto the back. Now, sew two rows of topstitching on the back, right next to the seam.

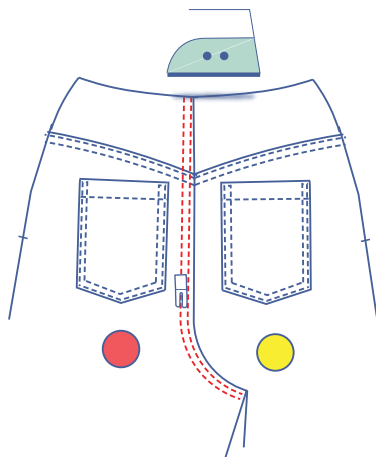


6

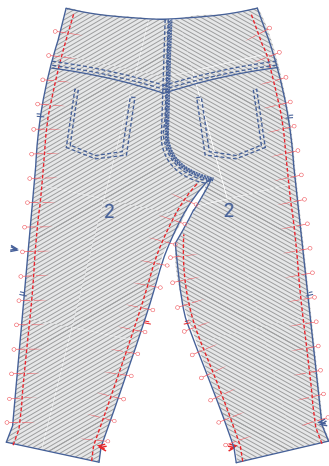
Pin and sew the crotch seam.



Finish the raw edges together with overlock stitching.

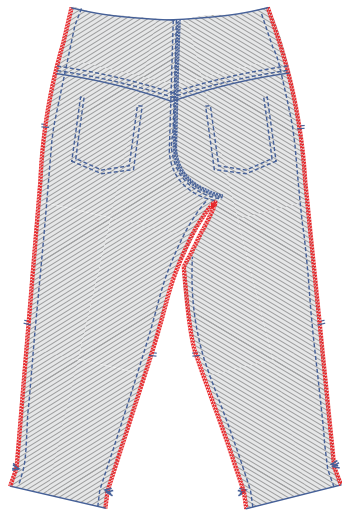


Press the seam allowance onto the LB. Now sew two rows of topstitching next to the seam.



7

Pin and sew the side and inside leg seams.

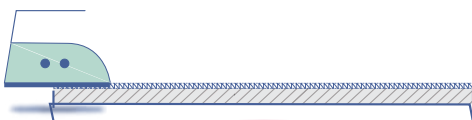


Finish the raw edges together with overlock stitching.



8

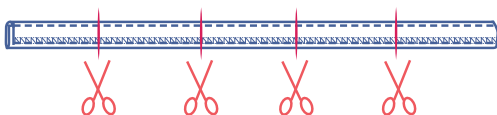
Finish 1 long side of the belt loops (12) with overlock stitching.



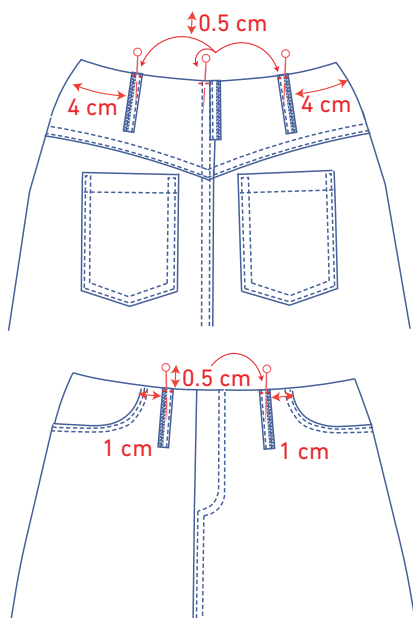
Now fold into thirds lengthways. Press the side that isn't finished onto the wrong side and press the overlocked side over this.



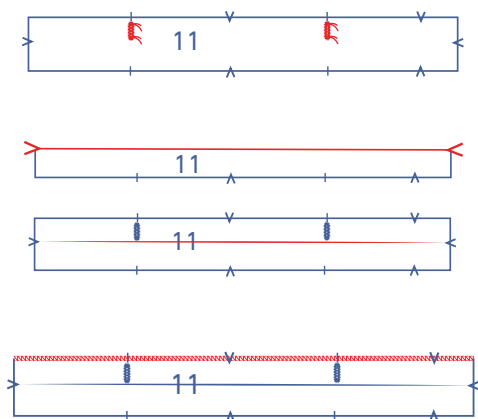
Sew into place at 2 mm away from both sides.



Cut the strip for the belt loops into 5 equal parts.



Pin one short side of each of the 5 belt loops to the waist-line: On the back: one on the CB and then one each on either side at 4 cm from the side seam. On the front: 1 each at 1 cm from each pocket opening. Sew into place at 0.5 cm from the top edge.

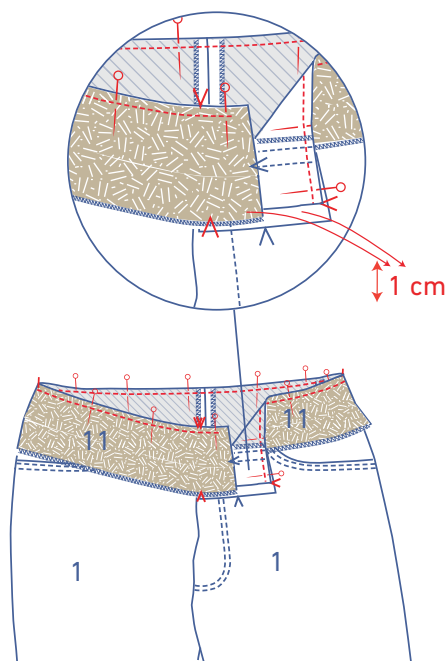


9

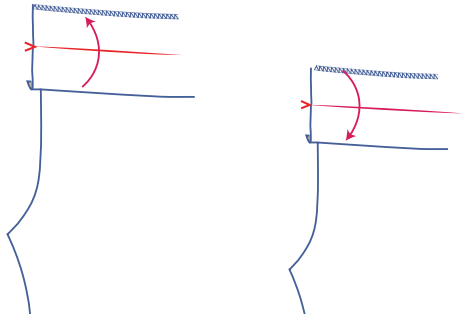
Make two vertical buttonholes in the waistband at the marking threads.

Press the waistband (11) in half at the V notches with the wrong sides together to create a fold line. Open back out again.

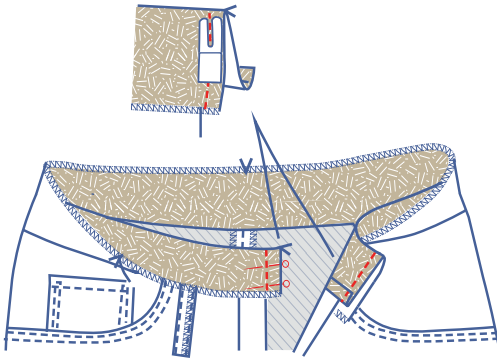
Finish the indicated long side of the waistband with overlock stitching.



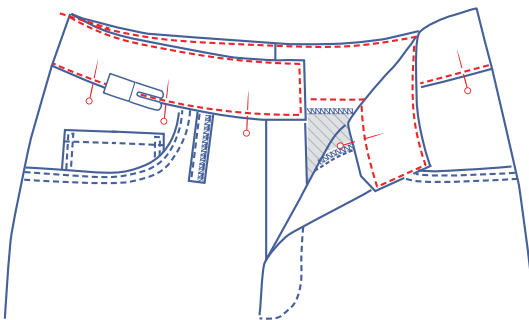
Pin the end of the waistband that hasn't been overlocked to the waistline of the trousers. Each end of the waistband should stop 1 cm past the finished CF. The single notches on the waistband indicate the side seams. The V notch at the middle of the waistband should neatly line up with the CB seam. The V notch indicating the CF should align with the V notch on the RF. Sew into place.



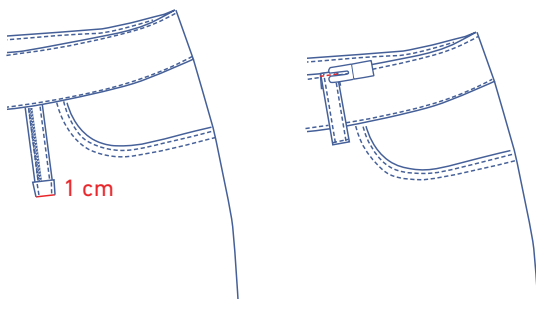
Now flip the whole waistband up. Then fold half of it back on itself (along the pressed centre fold line) at the V notches.



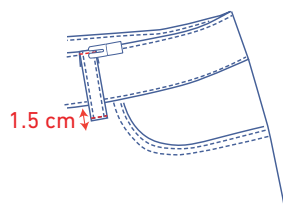
Pin and sew both short ends.



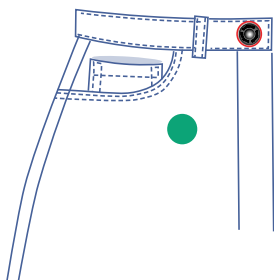
Next, turn waistband inside out. Lay neatly flat and pin the front and back sides of the waistband together along the right side. Sew into place all around the waistband.



Fold the top of the belt loops 1 cm onto the wrong side. Flip up to meet the top of the waistband. Sew into place at the top of the waistband right next to the edge.

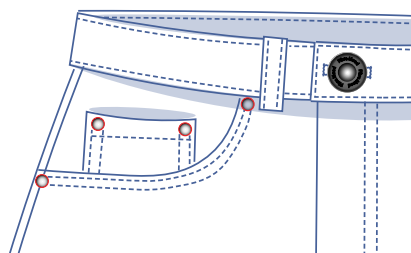
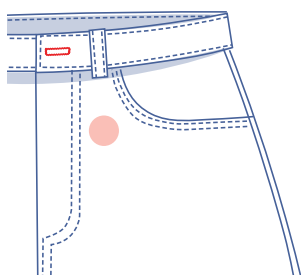


Topstitch the belt loops on at the bottom at 1.5 cm under the finished waistband.

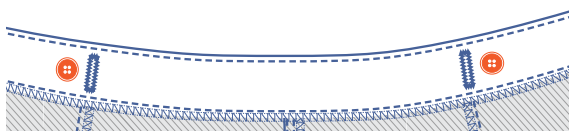


10

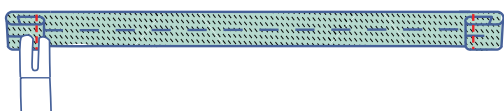
Attach the jeans button to the waistband on the RF side and make a horizontal buttonhole across from this on the waistband of the LF side.



Attach the decorative rivets at the indicated places.

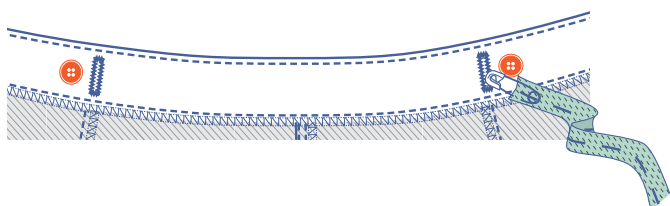


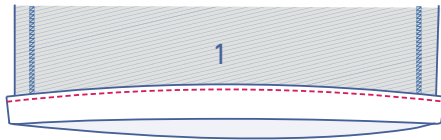
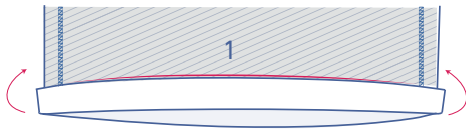
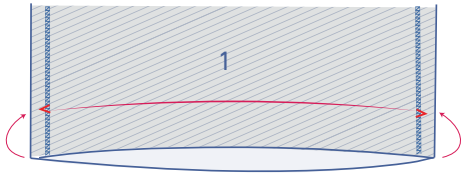
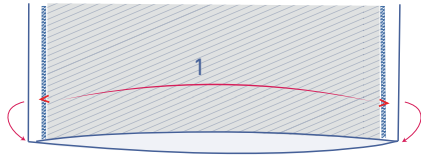
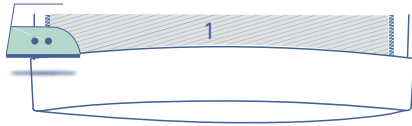
Sew two buttons on the inside of the waistband next to the buttonholes.



Fold the short ends of the buttonhole elastic over and sew into place.

Next, thread this through the buttonholes and button the elastic based on the desired waist size.





11

Press the seam allowance up to the V notches and open back out.

Place the raw edge up to the pressed fold line and then fold a second time on the pressed fold line.

Sew into place right next to the edge.