

Charlotte by Fibre ⚡ood

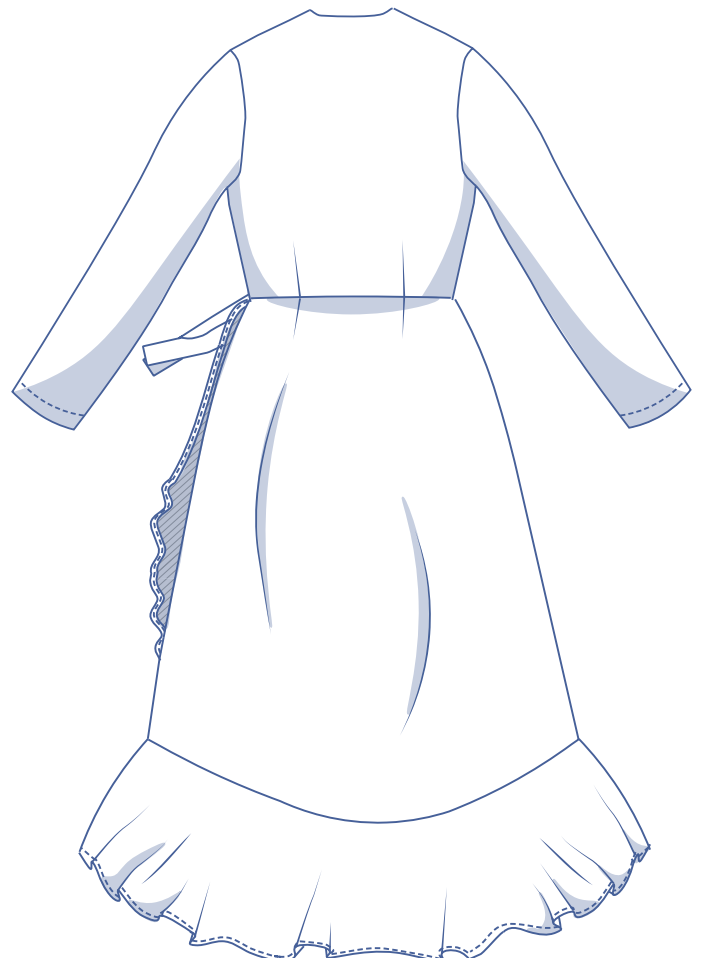


Charlotte by Fibre Mood



4 - 30

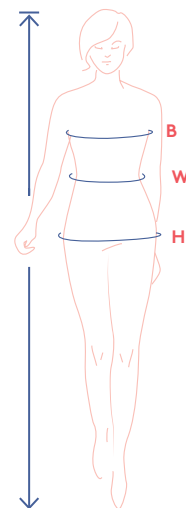
Go West, young ladies, in the Charlotte wrap dress.
A simple top with long sleeves means no nonsense,
but the romantic ruffles on the skirt keep Charlotte looking
divinely feminine. The neckline is finished with facing.
Charlotte does her own thing in both the long and short
versions. How much leg do you want to show?



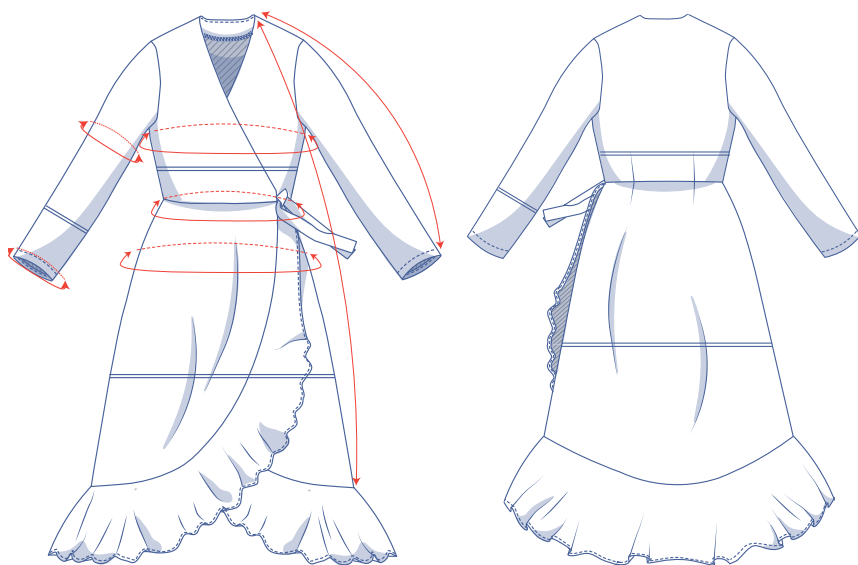
size chart (in cm)

size	4	6	8	10	12	14	16	18	20	22	24	26	28	30
body height	160	164	166	167	168	169	170	171	172	172	172	172	172	172
B (bust)	76	80	84	88	92	96	100	104	110	116	122	128	134	140
W (waist)	66	68	70	74	78	82	84	88	94.5	101	107.5	114	120.5	127
H (hip)	86	90	94	97	100	103	106	109	115	120	125	130	135	140

Choose your size based on your bust measurement. If your waist and hip measurements are wider than what's in the size chart, look at the waist and hip measurements in the chart to make sure there's still enough room at the waist and hips or whether the pattern needs to be altered. It's easy to do. Just trace the pattern and instead of tracing the line of the one size, trace the line of the size that suits you best.



pattern measurements (in cm)



This chart's measurements are the pattern measurements based on the fabric type and serve as a reference. Ease has been added to the width measurements (on top of the exact body measurements) for a more comfortable fit. Charlotte is designed to have a tailored cut, but depending on the preferred cut, you could possibly go a size smaller or larger than the size chosen.

Compare the stated lengths to the measured or desired lengths. **Lengthen** or **shorten** the dress and/or the sleeves by cutting the pattern pieces at the indicated double lines. Then either increase the distance between the cut pieces by the desired amount (to lengthen), or overlap the pieces (to shorten). Make sure that the CF and CB lines and the side seams are always straight.

size	4	6	8	10	12	14	16	18	20	22	24	26	28	30
length to side seam*	108	108.5	109	109.5	110	110.5	111.25	111.75	113.5	114.25	115	115.75	116.5	117.5
sleeve length**	71.25	71.5	71.75	72	72.5	72.75	73	73.25	73.75	74	74.5	75	75.25	75.75
bust	85	88.75	92.5	96.5	100	104	107.5	111.25	118.25	123.75	129.25	134.5	140	145.25
waistline	76.5	78.5	80.5	84.5	88.5	92.5	94.5	98.5	105	111.5	118	124.5	131	137.5
hips	99.5	103.5	107.5	110.5	113.5	116.5	119.5	122.5	128.5	134.5	140.5	146.5	152.5	158.5
upper arm circumference	29.75	30.75	32	33	34.25	35.25	36.5	37.75	41.25	42.75	44.5	46.25	48	49.75
sleeve hem circumference	22.5	23	23.5	24	24.5	25	25.5	26	26.5	27	27.5	28	28.5	29

* Until above the flounce.

** Including the shoulder length.

IMPORTANT

Adjust the amount of fabric to be used based on the alterations.



supplies



- Thread
- Iron-on interfacing: max. 60 cm
- Snap (Ø 0.5 cm): 1
- Fabric: see table

fabric		4	6	8	10	12	14	16	18	20	22	24	26	28	30
fabric width 110 cm	cm	420	430	440	450	460	470	480	490	515	525	510	525	530	535
fabric width 140 cm	cm	315	315	320	330	340	345	350	365	395	395	420	455	465	470

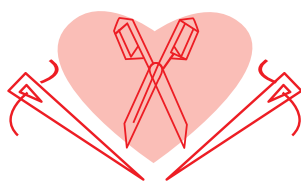
The corresponding fabric layout can be found on page 6 of these sewing instructions.

fabric advice



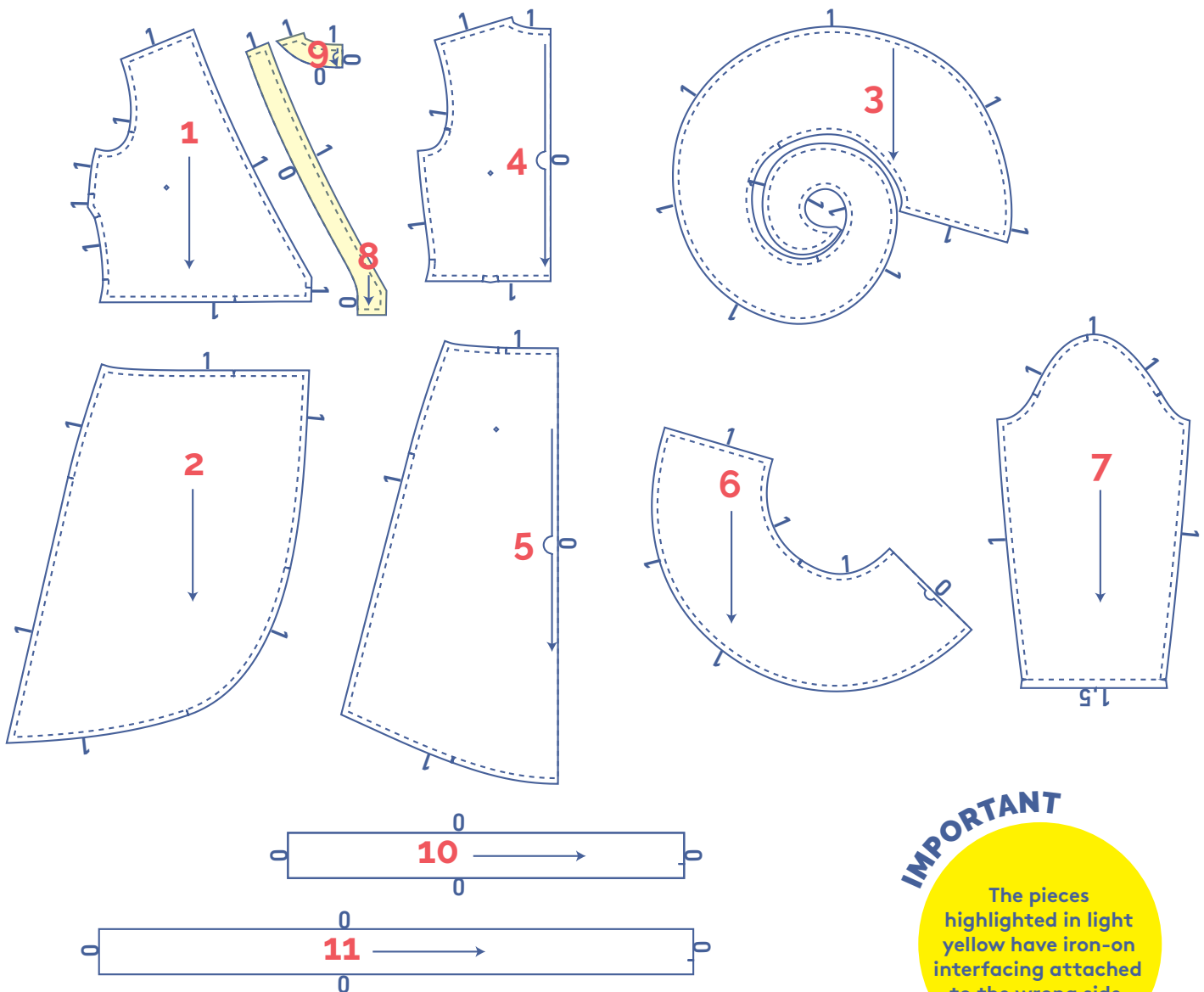
Go for a woven fabric with a fluid drape, such as crepe, linen, satin, Tencel or muslin. Plain fabric or a print? You can't go wrong!

Proud to be #Sewista



pattern pieces & seam allowances (in cm)

To sew the garment as described in the instructions, you must draw the illustrated seam allowances around the paper pattern pieces before cutting them out.

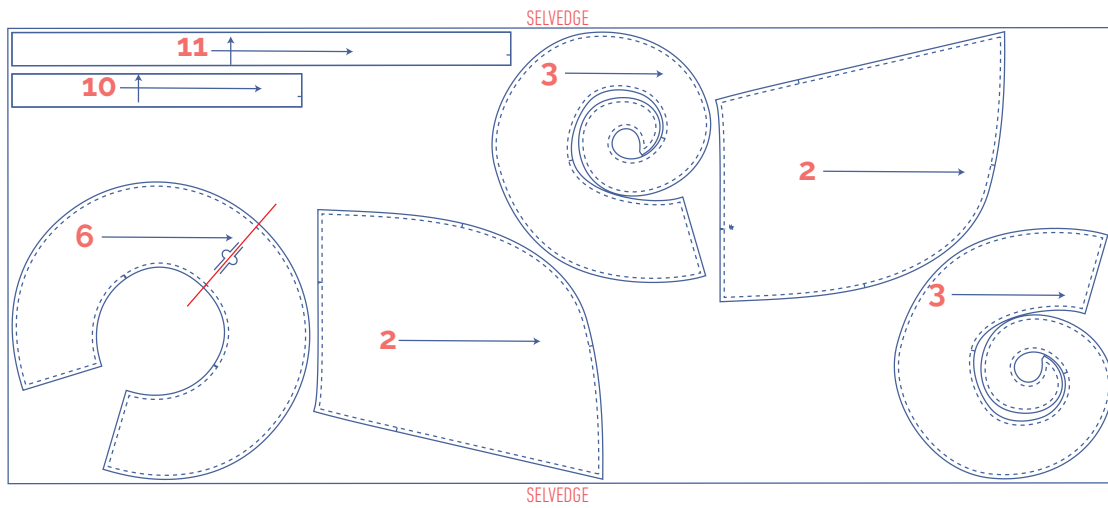
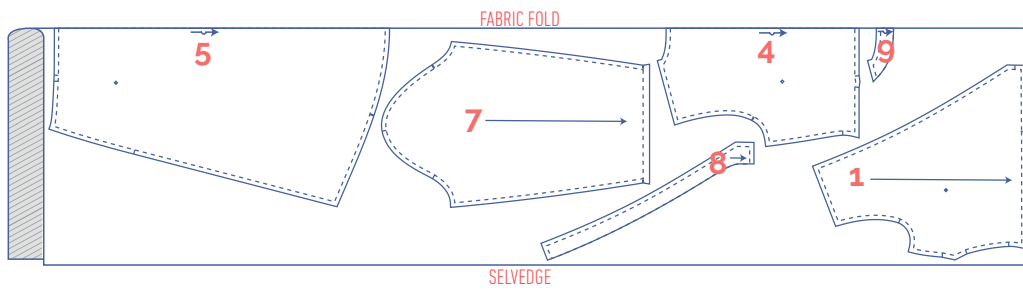


1. top front: 2x
2. skirt front: 2x
3. flounce front: 2x
4. top back: 1x on fabric fold
5. skirt back: 1x on fabric fold
6. flounce back: 1x on fabric fold
7. sleeve: 2x
8. neckline facing front: 2x
9. neckline facing back: 1x on fabric fold
10. tie RF: 1x
11. tie LF: 1x

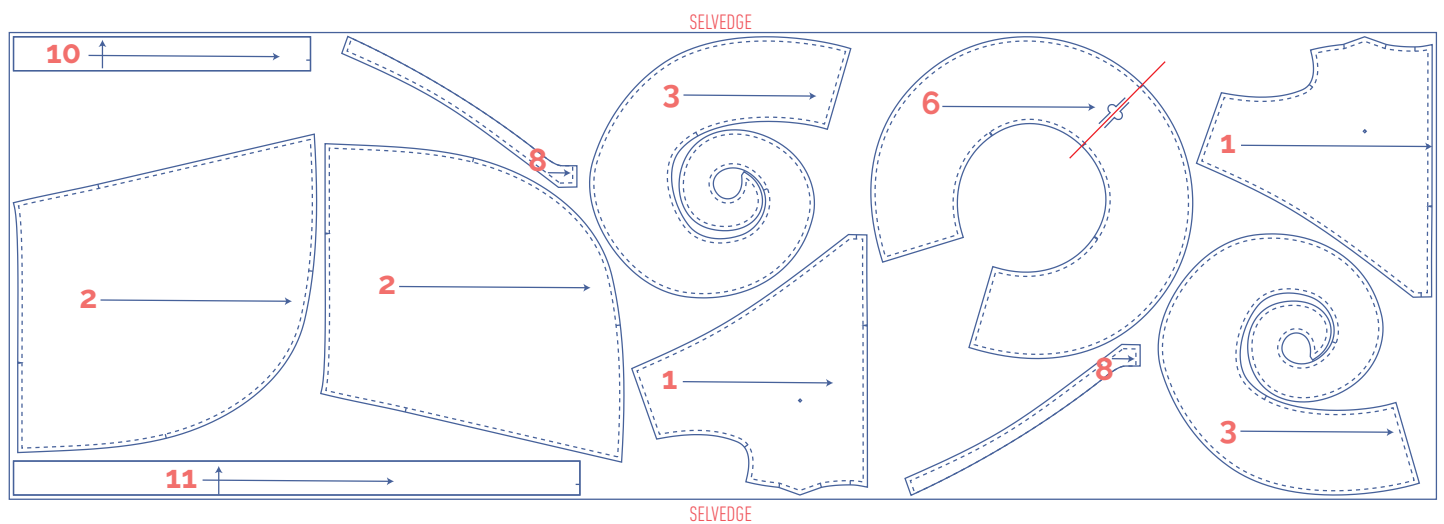
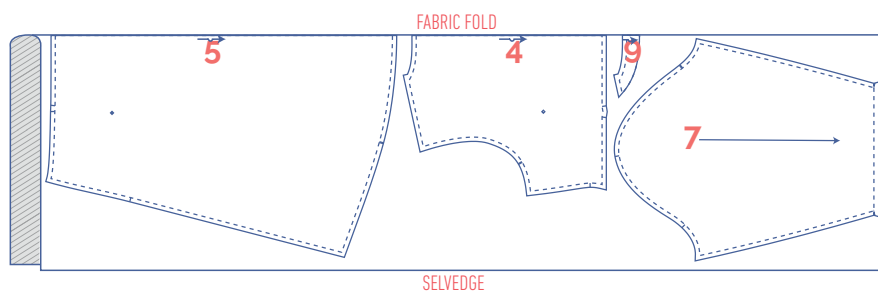
?	material type
□	fabric
□	iron-on interfacing

fabric layout – solid fabrics
fabric width 110 cm

4 - 22

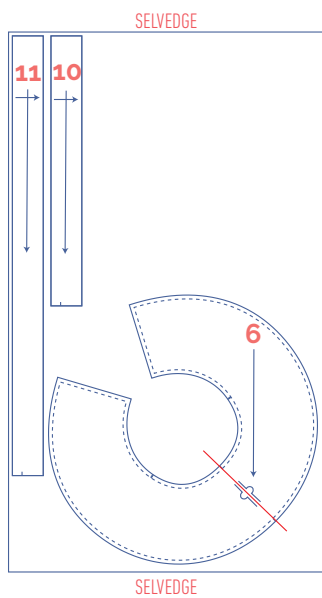
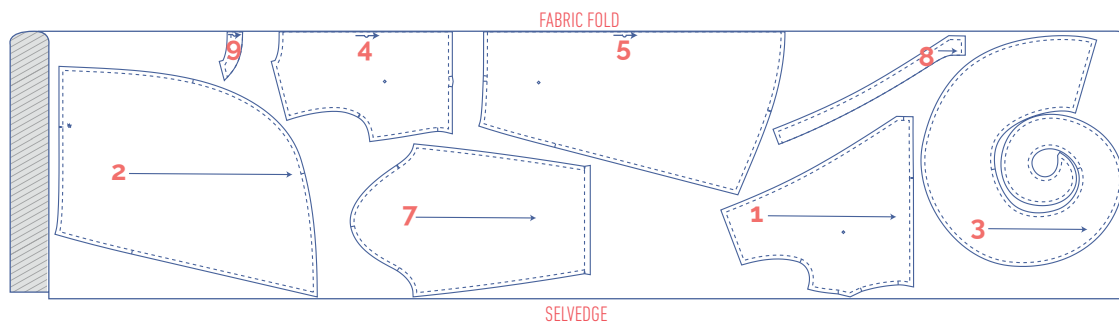


24 - 30

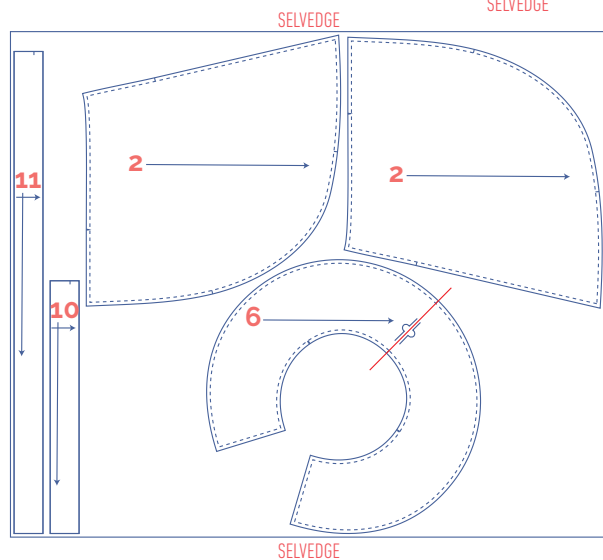
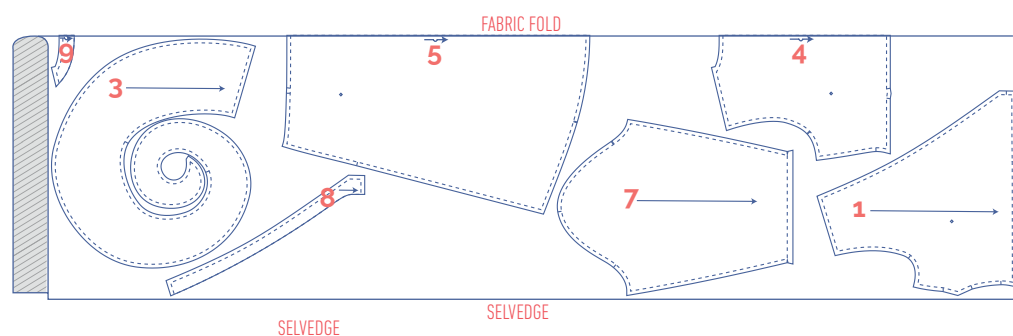


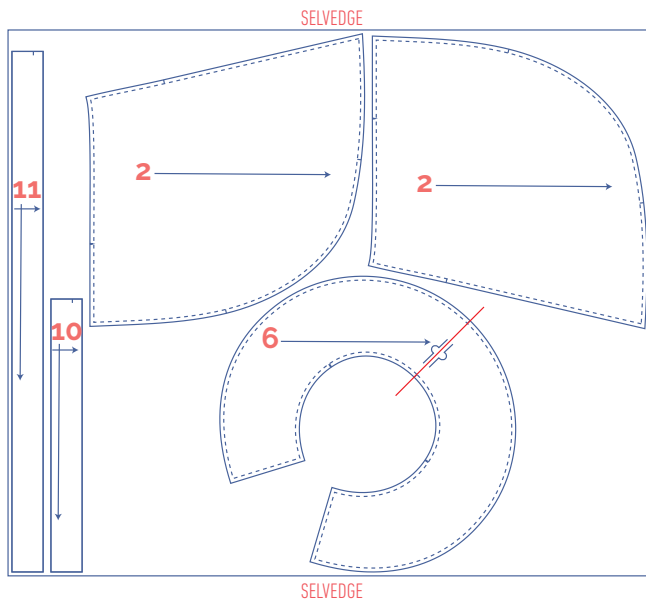
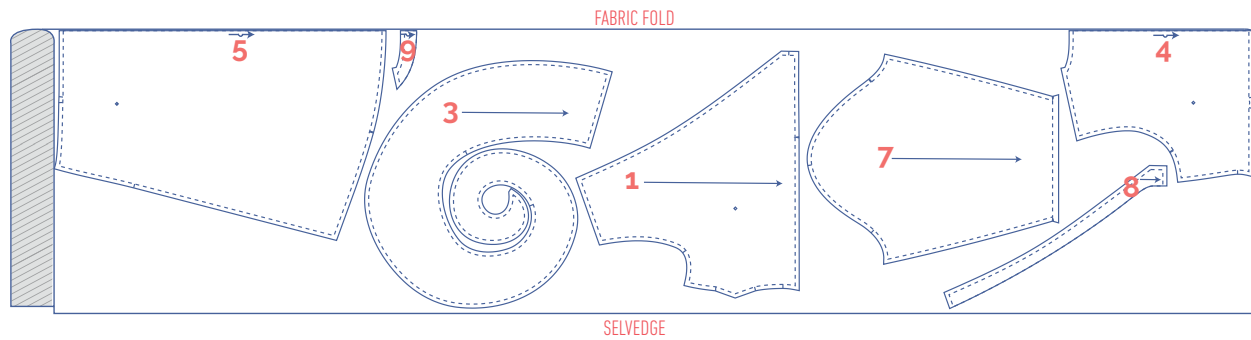
fabric layout – solid fabrics fabric width 140 cm

4 - 18



20 - 26





marking pattern pieces



notch the pattern paper and fabric at the following points

I single notch

II double notch

V V notch



mark the following points using marking thread



centre point



snap/button

sewing instructions



The method used to finish sewing the garment depends on the fabric used. The pieces are always sewn together with the right sides of the fabric facing together, unless stated otherwise.

F front

B back

RF right front

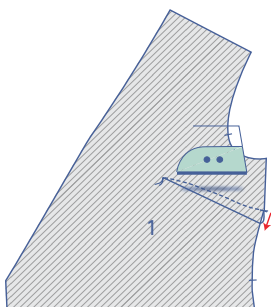
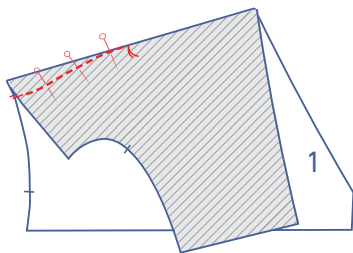
LF left front

CF centre front

CB centre back

right side

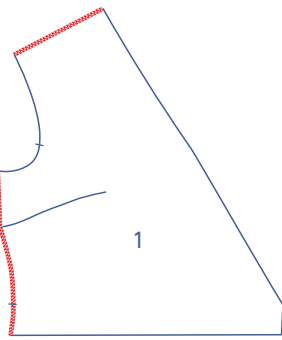
iron-on interfacing



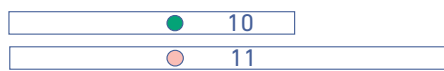
1

Fold the notches on the side seam of the front top (1) in half with the right side of the fabric facing inwards. Sew the dart in a slightly curved line towards the marking thread. Stitch up to and just past the marking thread, so that you've sewn past the fabric. Snip the threads and make a knot.

Turn the front over so that the wrong side is facing up. Press the dart over and down.

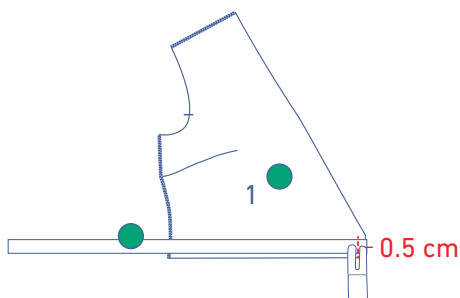


Finish the shoulder and side seams with overlock stitching.

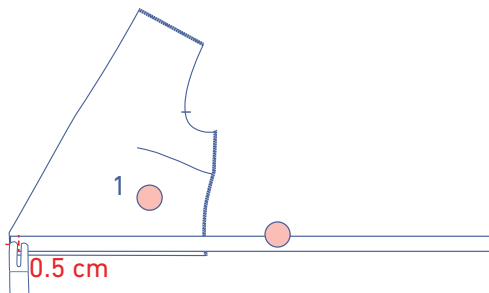


2

Fold the ties (10 and 11) in half lengthwise with the right side of the fabric facing inwards. Sew the indicated sides. Turn the right way out.

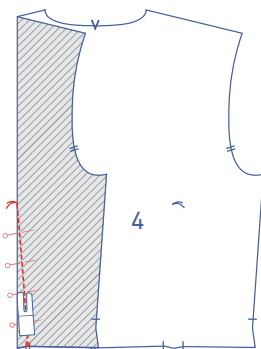


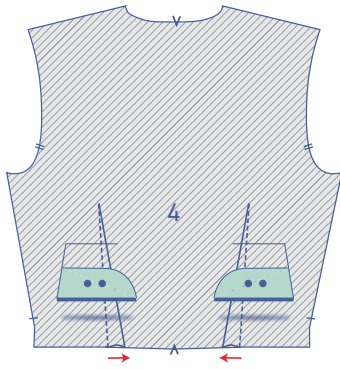
Pin the corresponding ties with the raw edges to the front with the notches matching. Sew into place at 0.5 cm from the edge.



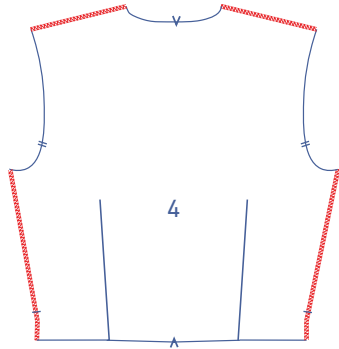
3

Fold the notches at the bottom of the back top (4) together with the right sides of the fabric facing. Sew the dart in a slightly curved line towards the marking thread. Stitch up to and just past the marking thread, so that you've sewn past the fabric. Snip the threads and make a knot.

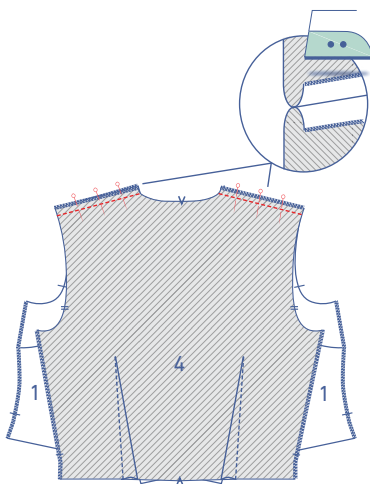




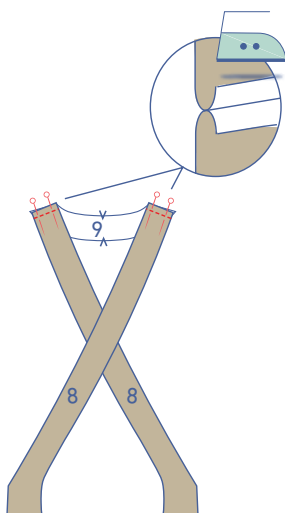
Turn the back over so that the wrong side is facing up. Press the dart or dart equivalent towards the CB.



Finish the shoulder and side seams with overlock stitching.

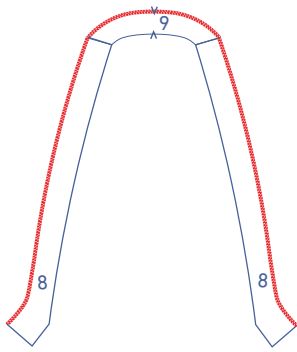


Pin and sew the shoulder seams and press the seam allowance open.

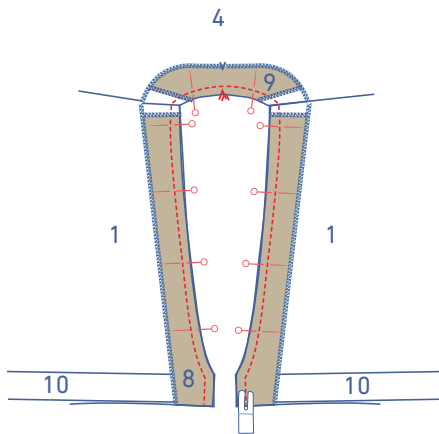


4

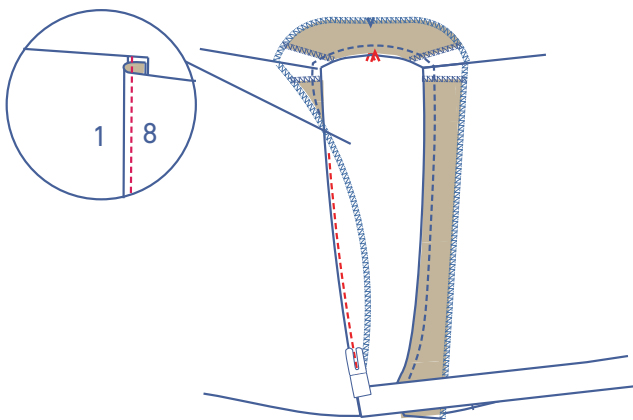
Pin and sew the shoulder seams of the neckline facing front (8) and the neckline facing back (9) and press the seam allowance open.



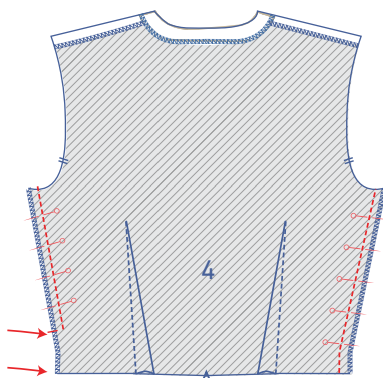
Finish the indicated raw edges with overlock stitching.



Pin and sew the neckline of the facing to the neckline of the top, making sure that the V notches and shoulder seams match (the ties are sandwiched between the facing and the front).

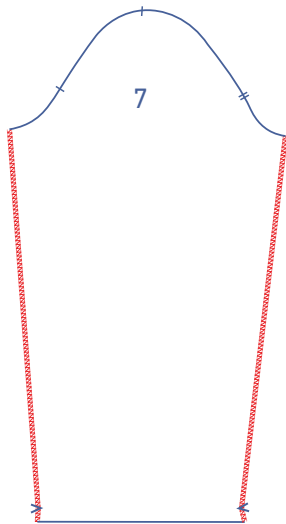


Fold the facing and the seam allowance over towards the facing. Understitch the facing right next to the seam through all layers (facing + underlying seam allowance).

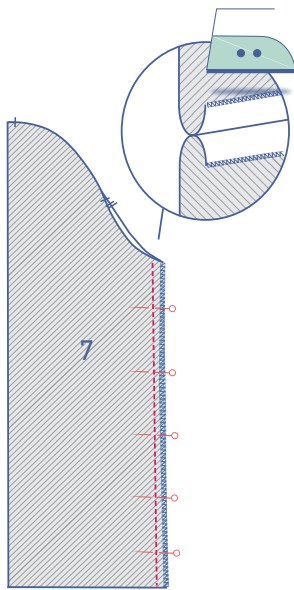


5

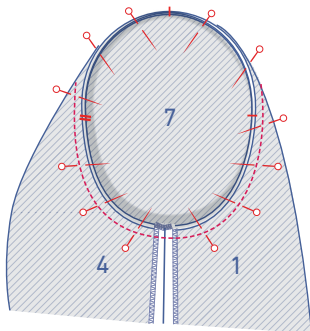
Pin and sew the side seams into place. Important: leave an opening in the right side seam that extends from the single notch to the seam. Then press the seam allowance open.



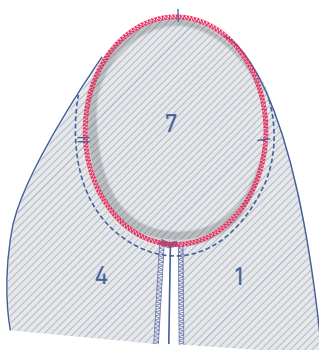
Finish the sides of the sleeve (7) with overlock stitching.



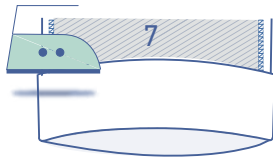
Pin and sew the sleeves closed and press the seam allowance open.



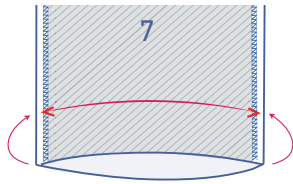
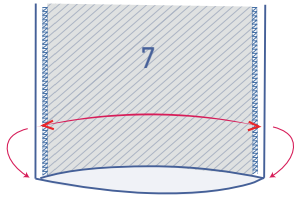
Pin the sleeve to the armhole with the corresponding notches matching. The single notch matches the front, the double matches the back, and the single notch at the top aligns with the shoulder seam. Sew into place, making sure you distribute the fabric between the markings.



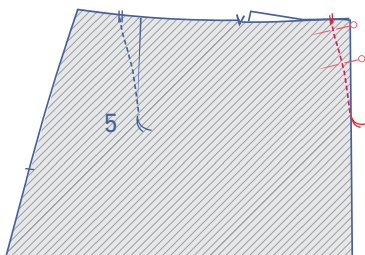
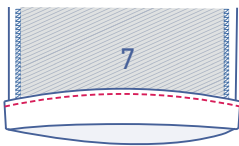
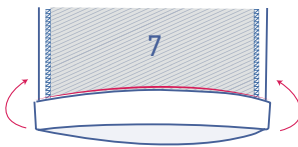
Finish the raw edges together with overlock stitching.



Finish the sleeve hem: press the seam allowance over at the V notch and open back out.

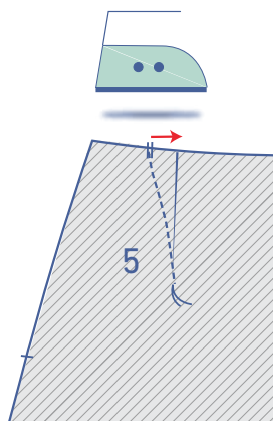


Place the raw edge against the pressed fold line then fold over once more. Sew into place next to the edge.

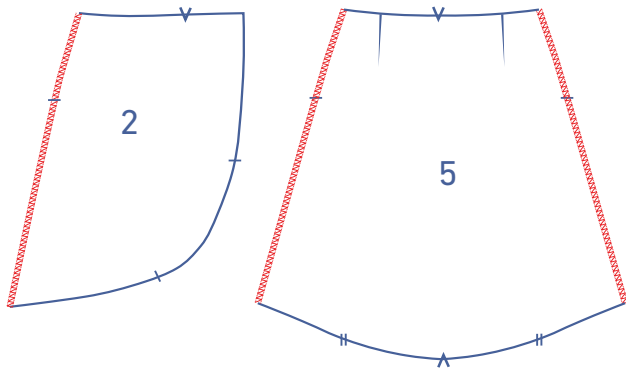


6

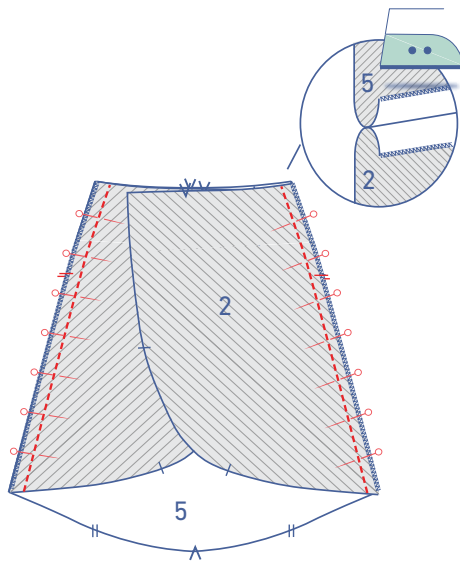
Fold the skirt back (5) in half with the right side of the fabric facing inwards. Neatly overlap the notches at the waist seam. Sew the waist dart up to the marking thread. Repeat for the other waist dart.



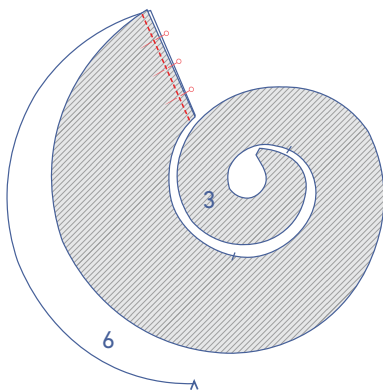
Press the dart towards the CB.



Finish the side seams of the skirt back and the skirt front (2) with overlock stitching.

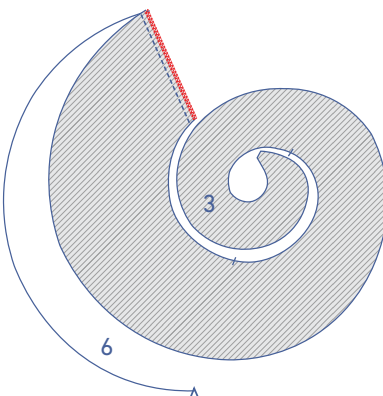


Pin and sew the side seams of the skirt front and skirt back and press the seam allowance open.

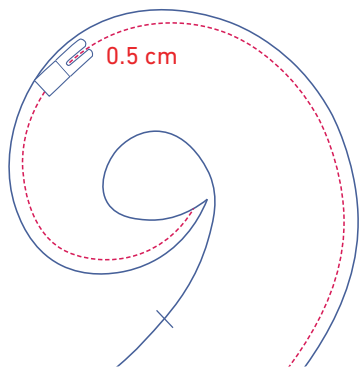


7

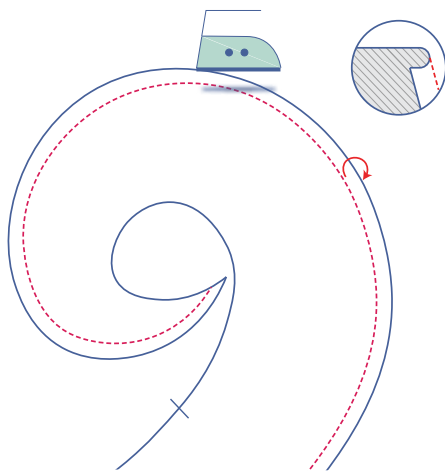
Pin and sew the short ends of the flounce front (3) and flounce back (6) together.



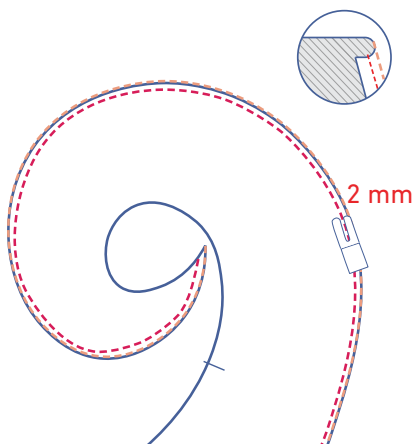
Finish the raw edges together with overlock stitching.



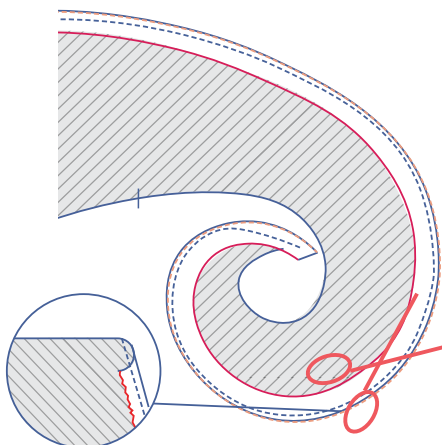
Finish the outer edge of the flounce, like so: stitch at 0.5 cm from the raw edge.



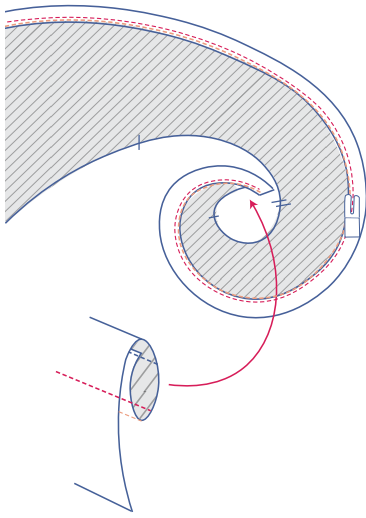
Next, fold the raw edge to the wrong side of the fabric, using the stitching as a guideline. Press into place.



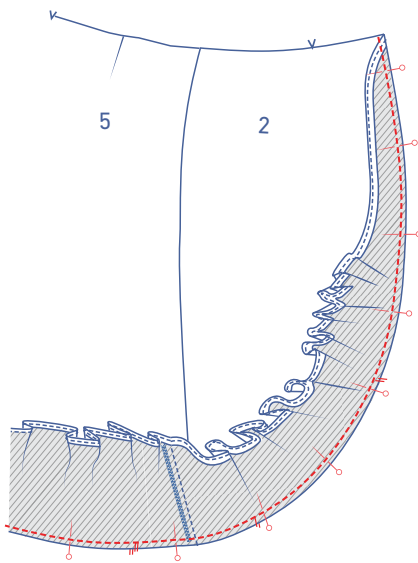
This time, stitch the pressed over seam allowance into place at 2 mm from the edge.



Trim the excess seam allowance.

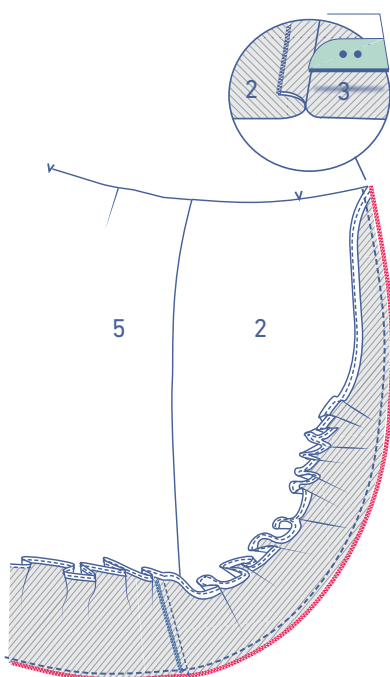


Now, fold the edge over once more to the wrong side and sew into place. Neatly press along the wrong side.

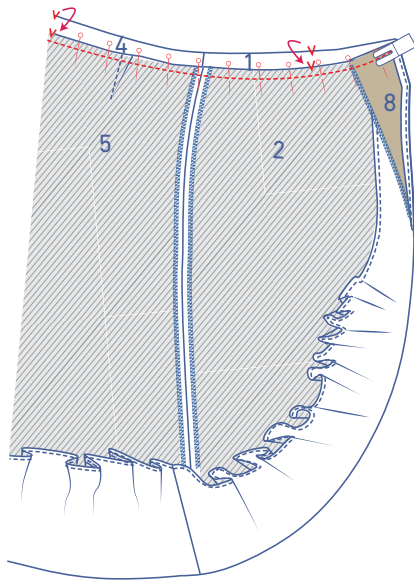


8

Pin and sew the flounce to the skirt with the corresponding notches matching.

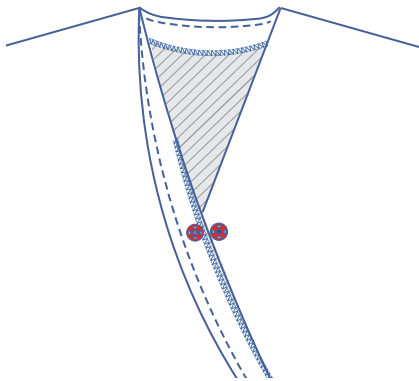


Finish the raw edges with overlock stitching and press the seam allowance onto the skirt.



9

Pin and sew the skirt to the top with the V notches and side seams matching. Fold the facing over the skirt onto the wrong side of the skirt. Sew into place. Turn the right way out.



10

If you want to, you can sew a snap on to finish.