

# Martha by Fibre ⚡ood



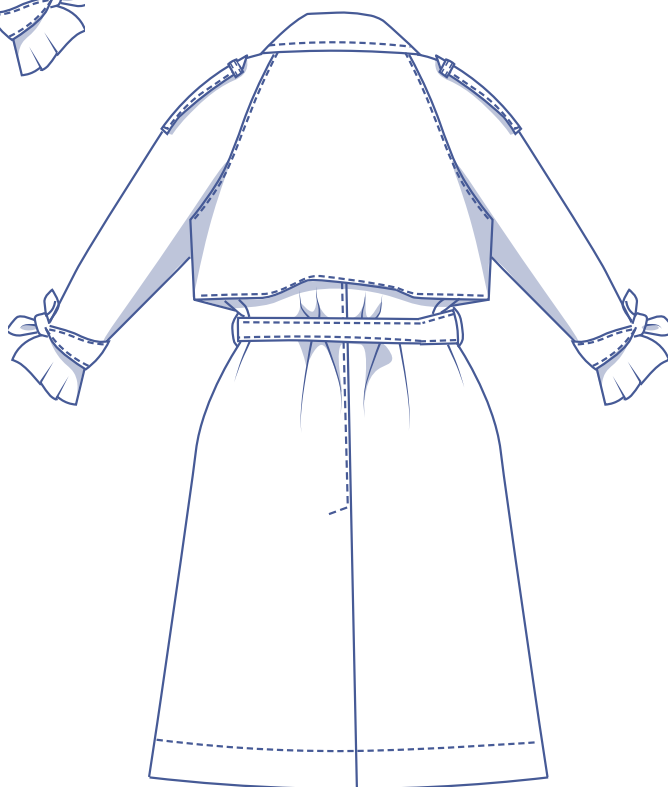
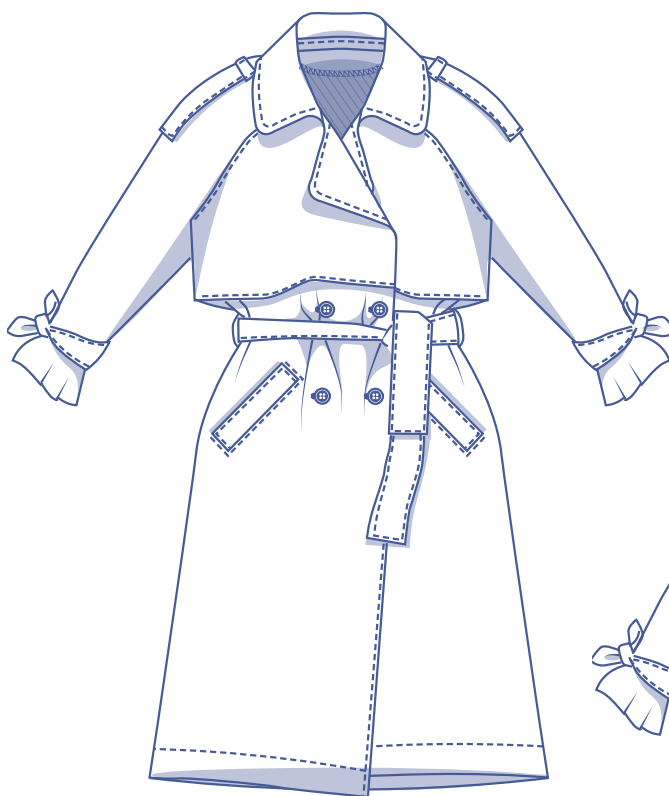
# Martha by Fibre Mood

\*\*\*\*\*



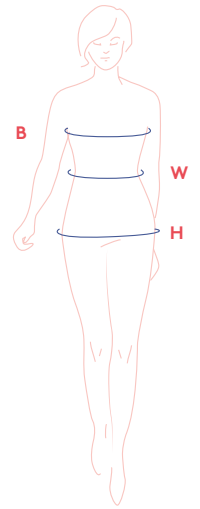
XS - XXXL

Trench coats never go out of style. The oversize Martha pattern proves it's a true trench with charm and panache. You'll love the double breasted front, the belted waist and traditional rain flaps at the back and front. Thoughtful features like a back slit and welt pockets add an air of sophistication, while the shoulder lapels shout power! In short, Martha will fit right into today's street scene.



## size chart (in inches)

size	XS		S		M		L		XL		XXL		XXXL	
EU	32	34	36	38	40	42	44	46	48	50	52	54	56	58
US	0	2	4	6	8	10	12	14	16	18	20	22	24	26
B	29.9	31.5	33.1	34.6	36.2	37.8	39.4	40.9	43.3	45.7	48	50.4	52.8	55.1
W	26	26.8	27.6	29.1	30.7	32.3	33.1	34.6	37.2	39.8	42.3	44.9	47.4	50
H	33.9	35.4	37	38.2	39.4	40.6	41.7	42.9	45.3	47.2	49.2	51.2	53.1	55.1



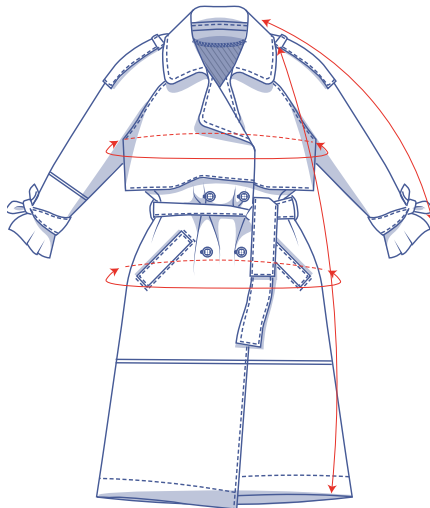
**Bust (B):** measure horizontally around the fullest part of the bust.

**Waist (W):** measure horizontally at the narrowest point of the body.

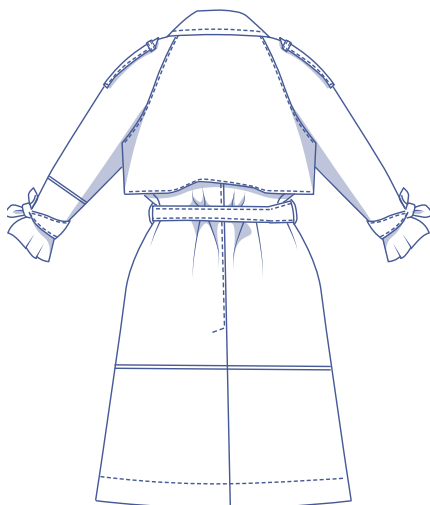
**Hip (H):** measure horizontally around the widest part of the lower body.

For this pattern, you should choose the size based on your bust measurement. Pick the size that is the best fit for your bust measurement. Altering the hips is easy. Simply trace the line of the one size instead of the other.

## finished garment measurements (in inches)



— you can lengthen  
or shorten the pattern here



This chart's measurements are the pattern measurements based on the fabric type and serve as a reference. Ease has been added to the width measurements (on top of the exact body measurements) for a more comfortable fit and to achieve a more fitted cut. Depending on what you prefer, you could possibly go a size smaller or larger than the 'right' size according to the body measurements.

size	XS	S	M	L	XL	XXL	XXXL
length	47.75	48.25	48.75	49.25	50.50	51.25	51.75
sleeve length*	26.50	27.25	28	28.75	30	31	32
bust	42	45	48.25	51.50	55.25	60	64.75
hips	43	46.25	49.25	52.50	56.50	61.25	66

\* Including the shoulder length.

Compare the stated lengths to the measured or desired lengths. **Lengthen** or **shorten** the coat and/or sleeves by cutting the pattern pieces at the indicated double lines and then spreading the pattern pieces out X inches from each other or overlapping them where needed. Make sure that the CF and CB lines and the side seams are always straight.

### IMPORTANT

Adjust the amount of fabric to be used based on the alterations.



## supplies



- Thread
- Iron-on interfacing:
  - a scrap (for use on heavy, stiff fabrics)
  - max. 2 yd (for use on light fabrics with a fluid drape)
- Buttons (Ø 1"): 4 (+ 2 extra buttons for shoulder lapels, if you're sewing them)
- Fabric: see table

fabric used (in yards) standard	XS	S	M	L	XL	XXL	XXXL
fabric width 43"	6	6	6 ¼	6 ¼	6 ½	7	7 ½
fabric width 55"	4 ¼	4 ¼	4 ½	5	5 ¼	5 ½	5 ½

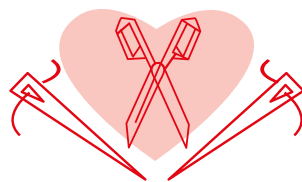
The corresponding fabric layout can be found as of page 6 of these sewing instructions.

## fabric advice



There's no trench coat fabric that tops gabardine. Gabardine is a tightly woven, smooth fabric with fine diagonal ribs. The fabric is so tightly woven that it's almost impervious to rain. Gabardine fabric can be composed of wool or cotton thread or a blend of one of these with polyester or polyamide. Before you get started on the Martha, decide whether you want it to be a trend item, or a more functional raincoat. Because...if you want to make a raincoat that's the real deal, you'll need raincoat fabric – obviously.

# Proud to be #Sewista



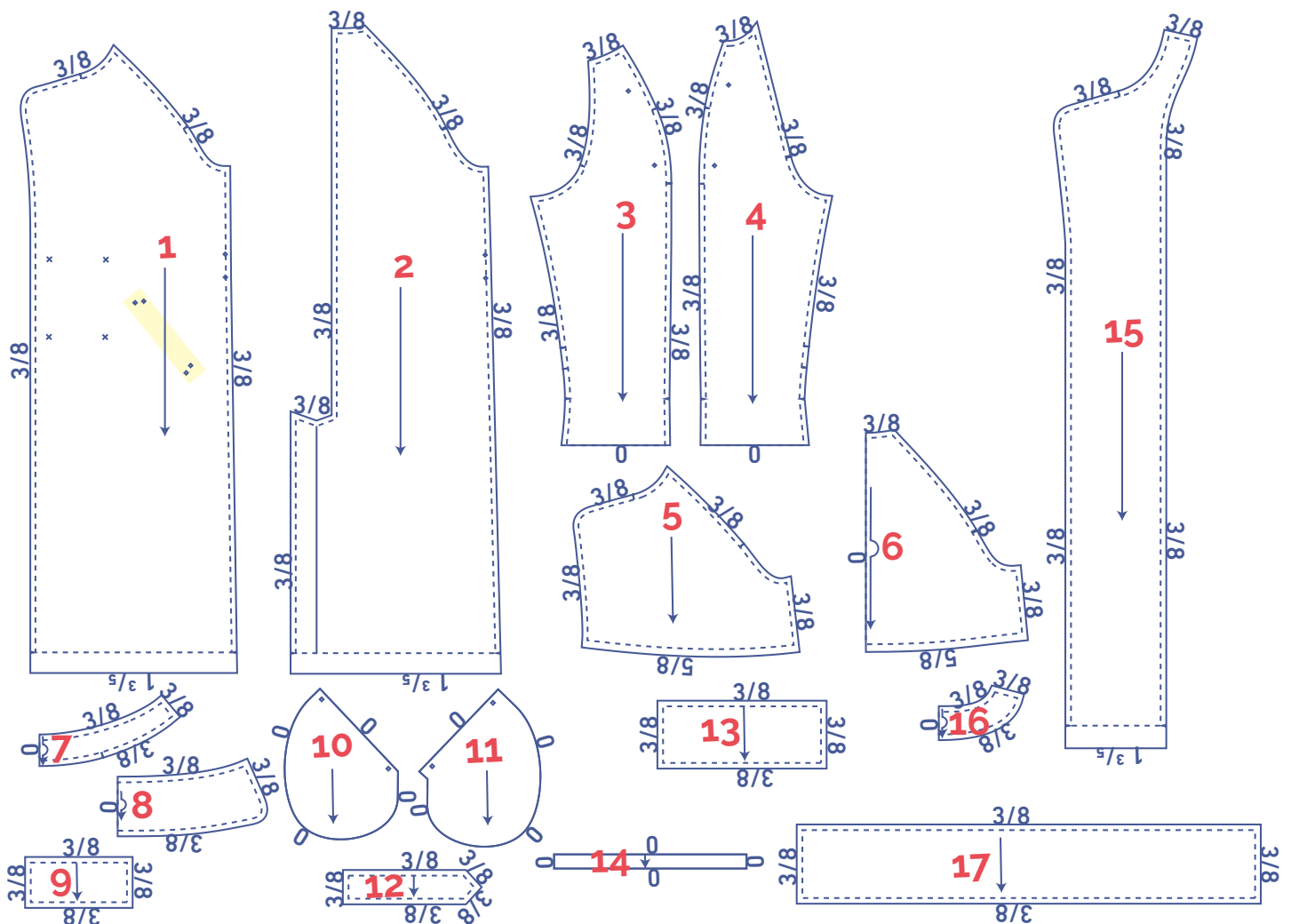
## pattern pieces & seam allowances (in inches)

To sew the garment together as described in the instructions, you must draw the illustrated seam allowances around the paper pattern pieces before cutting them out.

- |                                      |                                    |
|--------------------------------------|------------------------------------|
| 1. front: 2x                         | 10. inner pocket bag: 2x           |
| 2. back: 2x                          | 11. pocket opening: 2x             |
| 3. sleeve front: 2x                  | 12. shoulder lapel: 4x             |
| 4. sleeve back: 2x                   | 13. sleeve ties: 4x                |
| 5. front rain flap: 2x               | 14. belt loops: 1x                 |
| 6. back rain flap: 1x on fabric fold | 15. facing front: 2x               |
| 7. collar stand: 2x on fabric fold   | 16. facing back: 1x on fabric fold |
| 8. collar: 2x on fabric fold         | 17. belt: 2x                       |
| 9. welt: 2x                          |                                    |

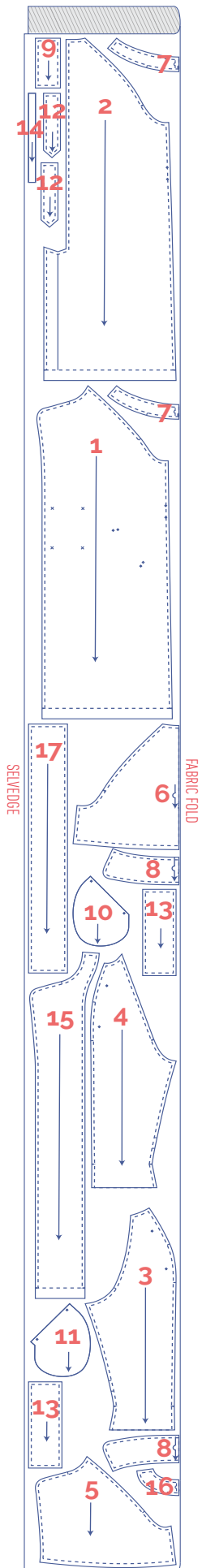
**IMPORTANT**

The pieces highlighted in light yellow have iron-on interfacing attached to the wrong side.

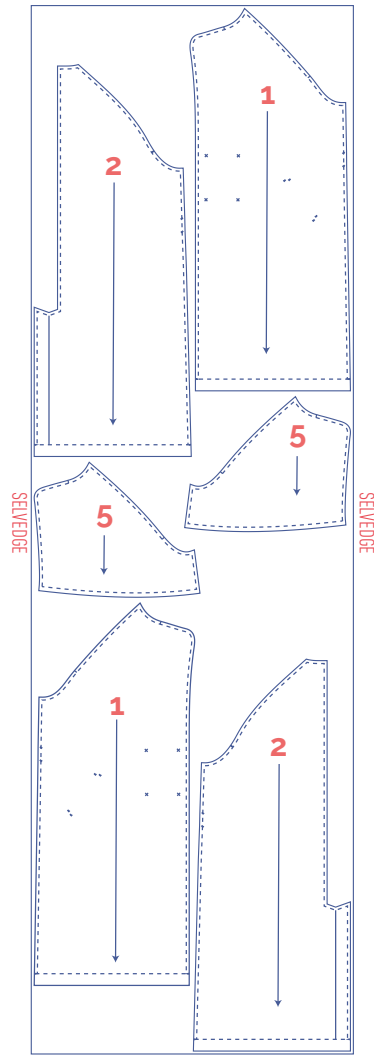


## fabric layout for fabrics 43" wide

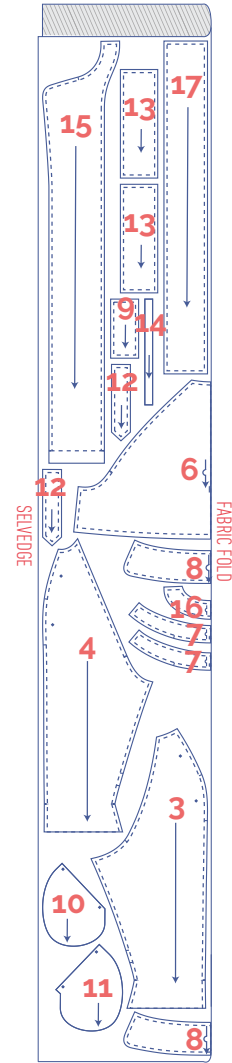
XS - XL



XXL-XXXL



XS - XXXL

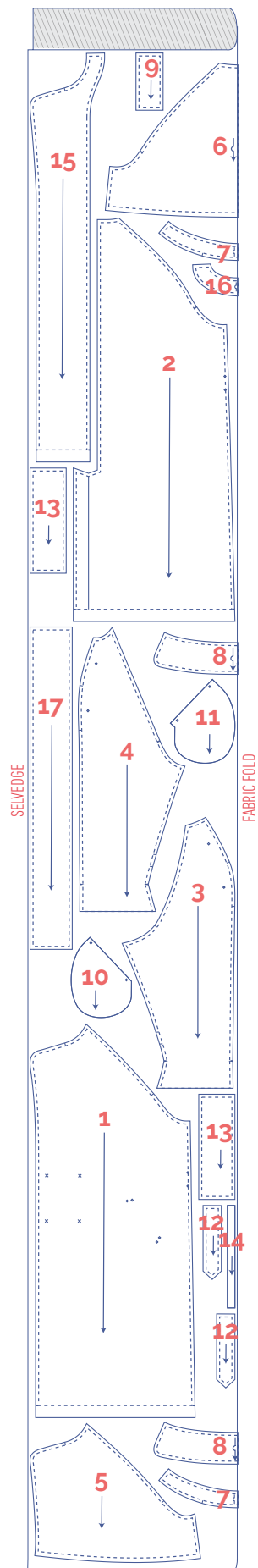


### IMPORTANT

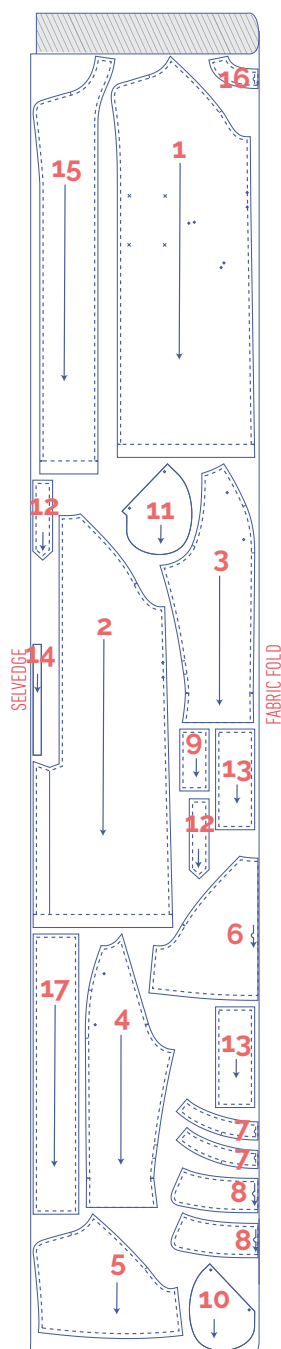
You only need pattern piece 14 once.

## fabric layout for fabrics 55" wide

**XS - M**



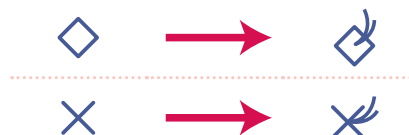
**L - XXXL**



### IMPORTANT

You only need pattern piece 14 once.

- Mark the next points with basting thread:



- Nick the pattern paper and fabric at the places where a single vertical line (I) and double vertical lines (II) are indicated.
- Cut a small notch out of the fabric at a V notch symbol or on the finished hemline.
- Cut a small corner (V notch) out of the pieces that lie on the fabric fold (—) to mark the middle of these pieces.

# sewing instructions



The method used to finish the garment will depend on your chosen fabric.

The pieces are always sewn together with right sides facing, unless stated otherwise.

F front

B back

CF centre front

CB centre back

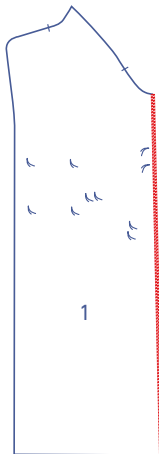
RB right back ●

LB left back ●

□ right side

▨ wrong side

▤ iron-on interfacing



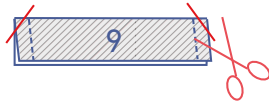
**1**

Finish the side seams of the front (1) with overlock stitching.





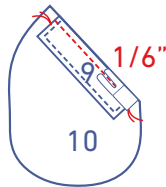
Fold the welt (9) in half with the right sides facing.



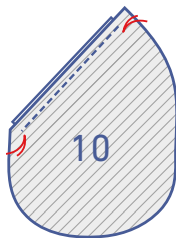
Sew the short sides. Trim the corners and turn right way out.



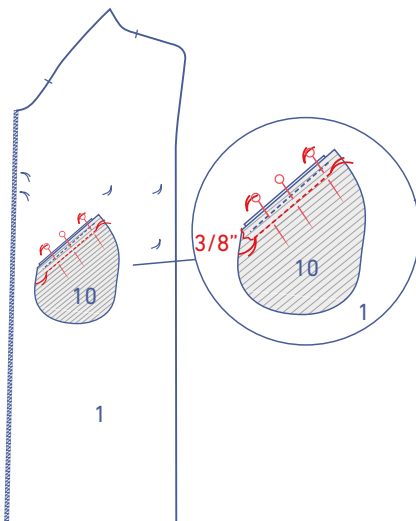
Top stitch at presser foot width from the finished edges.



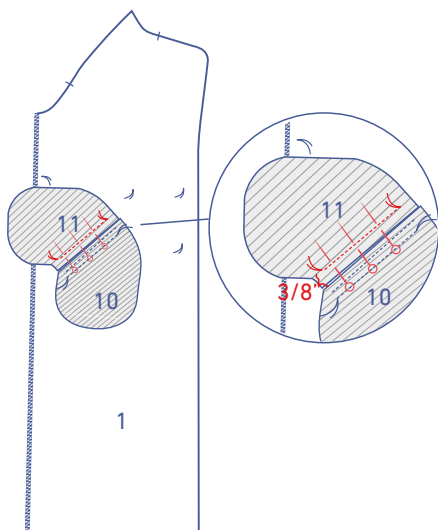
Place the raw edges of the welt between the basting threads of the inner pocket bag (10), neatly aligned with the raw edge of the inner pocket bag. When you're done, the right side of the welt should be facing up. Sew into place at  $1/6$ ".



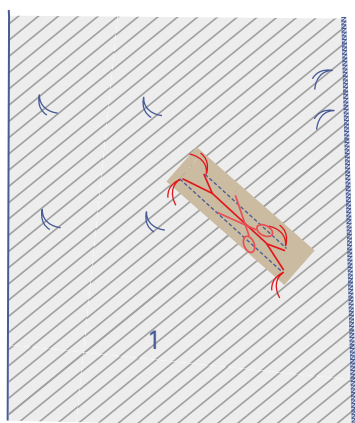
Turn the inner pocket bag + welt over so that the wrong side of the inner pocket bag is facing up and the welt is underneath.



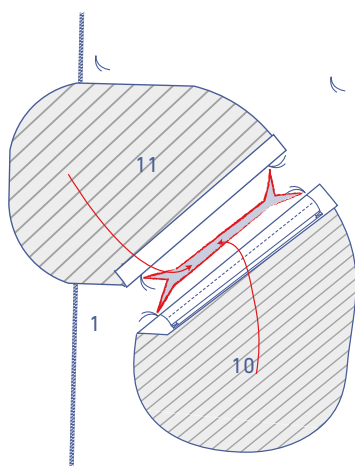
Pin the marking threads of the inner pocket bag (+ welt) to the bottom marking threads of the front. Sew into place between the marking threads at  $3/8$ " from the raw edge.



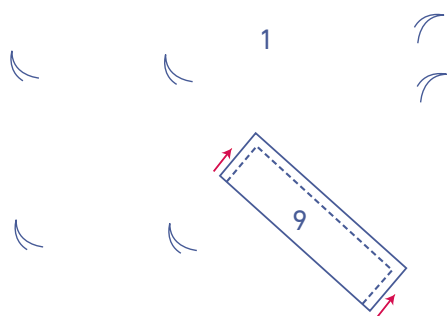
Pin the marking threads of the pocket opening (11) (with the right side facing down) to the top marking threads of the front. Sew into place between the marking threads at 3/8" from the raw edge.



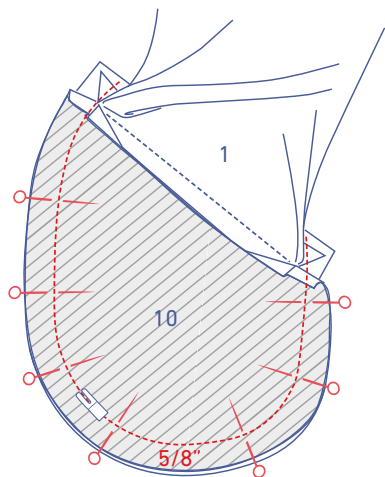
Turn the piece over and use appliqué scissors to snip between the two rows of stitching, stopping just a little way from the ends of both rows of stitching. From here, snip along the diagonal to the last stitch of each parallel row of stitching on both sides, taking care not to snip into the stitching.



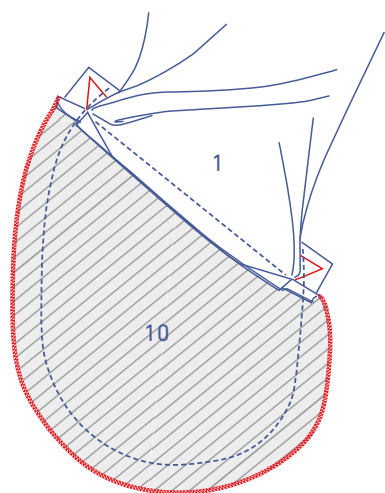
Push the pocket pieces + the corners (created by the snipping) on the right side over to the wrong side of the front.



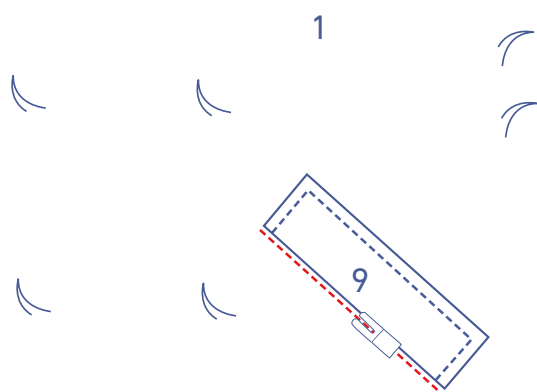
Neatly line up all the pieces (the welt + pocket pieces) on the right side of the front.



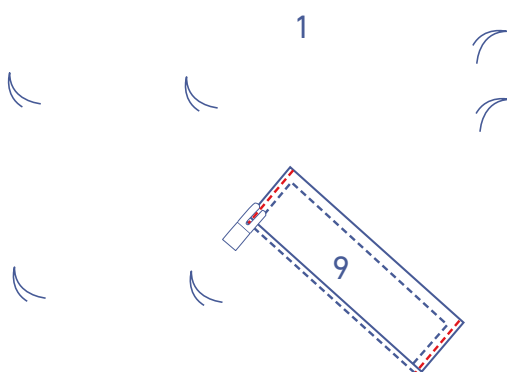
Fold the front over and out of the way and sew the curves of the pocket pieces (+ the welt triangles) together at 5/8" from the edge.



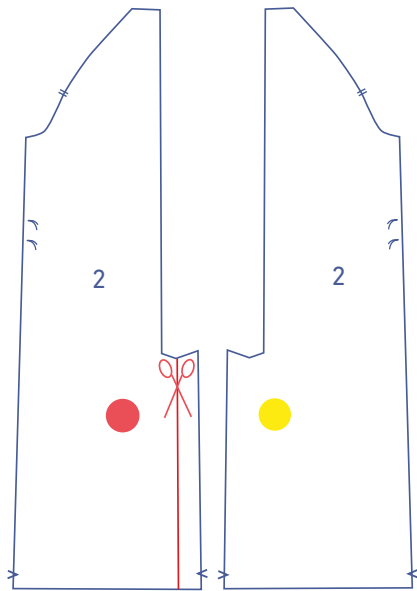
Finish the raw edges together with overlock stitching.



Fold the pocket pieces over and topstitch the front at 1/8" under the seam of the welt.

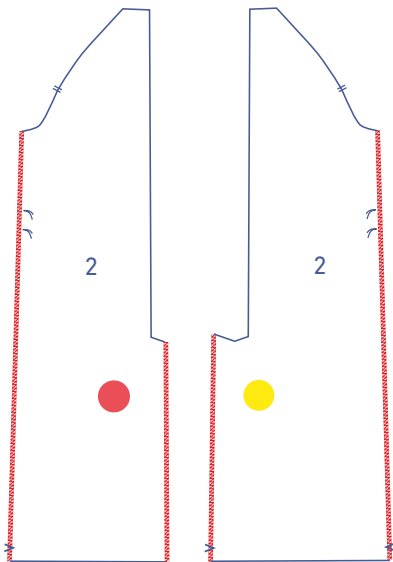


Sew the edges of the welt to the front at 1/8" from the edge.

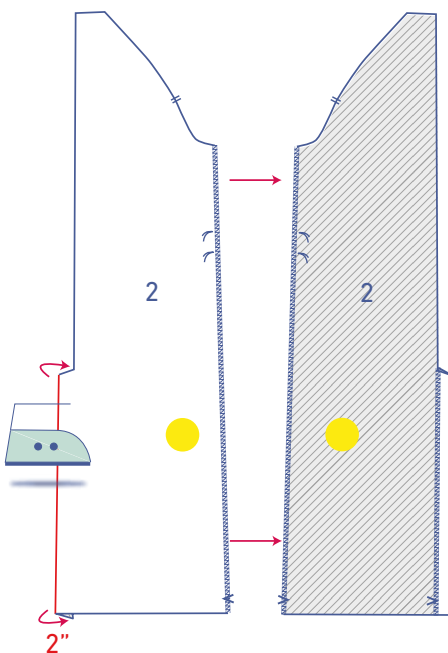


## 2

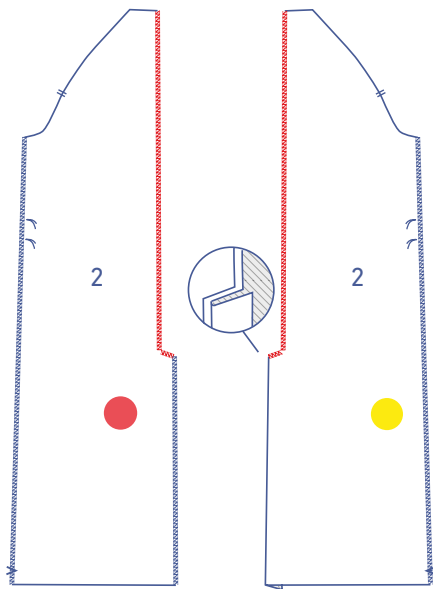
Snip along the indicated line to cut away part of the slit of the LB (2).



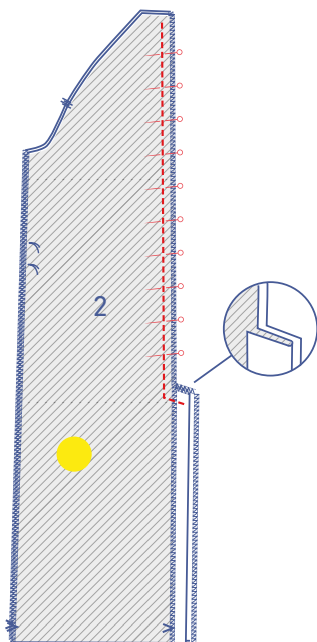
Finish the side seams and right side of the slit with overlock stitching.



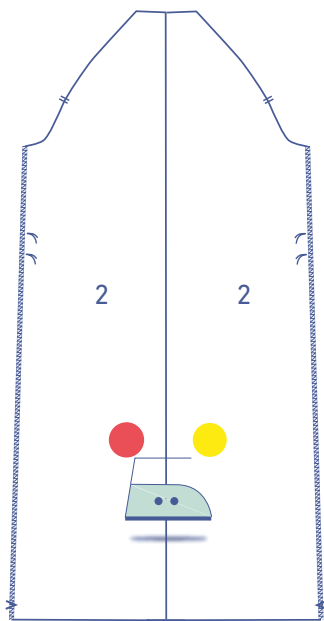
**Press 2" of the RB of the slit onto to the wrong side.**



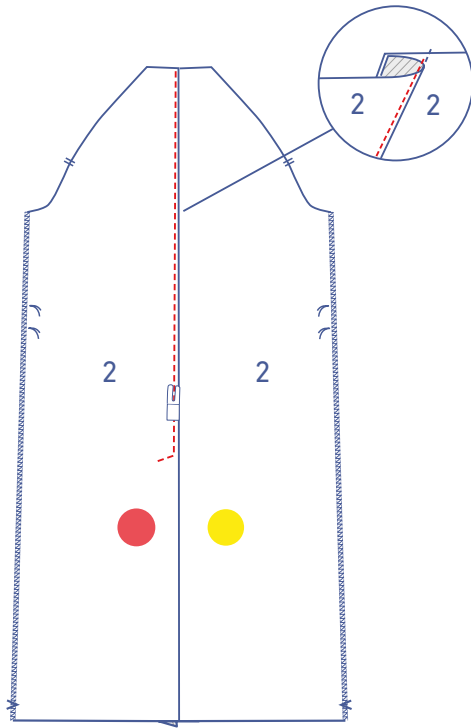
Finish the CB seam and angled edge of the slit with over-lock stitching.



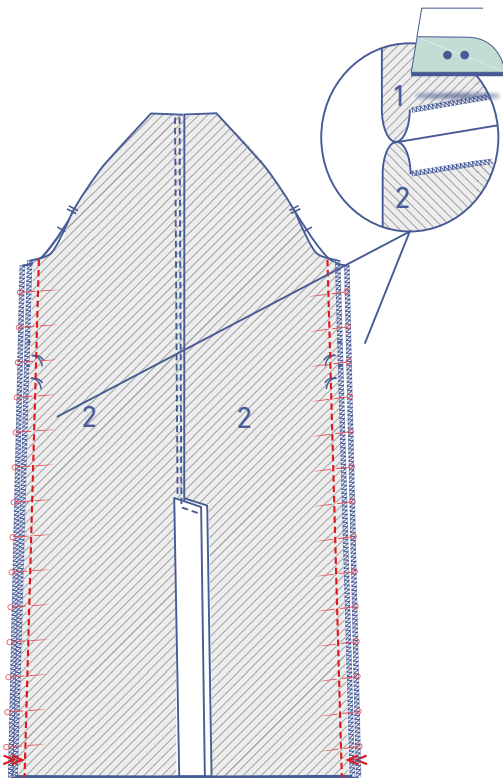
Pin both back pieces together with the right sides facing and sew the CB seam and the top of the slit together.



Place both back pieces side-by-side with the right sides facing up. Then press the slit allowance over towards the LB.

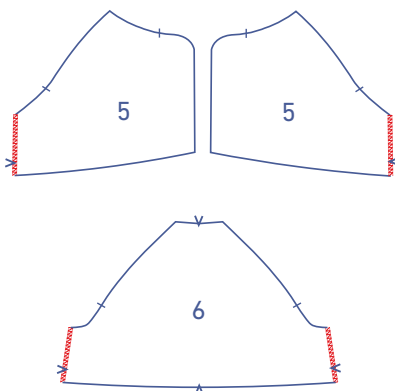


Top stitch the LB at 1/8" from the CB seam. Now pivot your needle and stitch the slanted edges at the top of the slit together too.

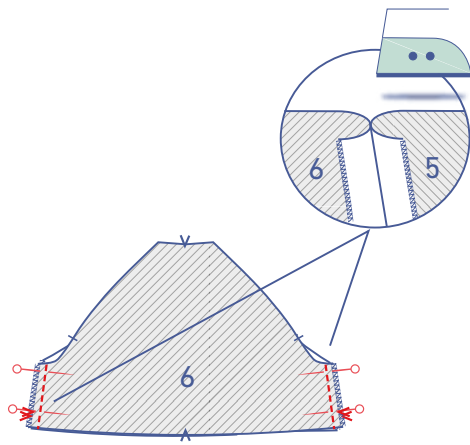


**3**

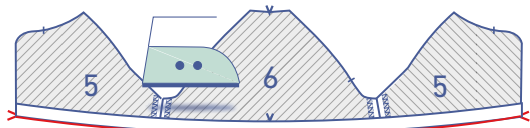
Pin and sew the side seams into place. Press open the seam allowances.



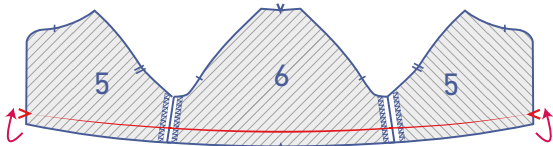
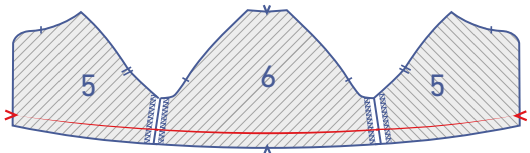
Finish the side seams of the front (5) and back (6) rain flaps with overlocking.



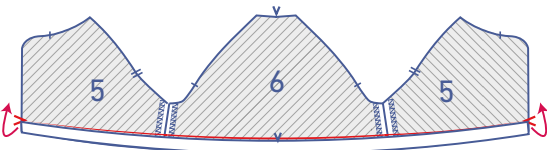
Pin and sew the side seams of the rain flaps. Press open the seam allowances.



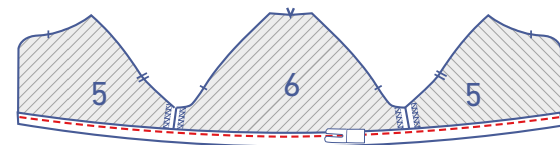
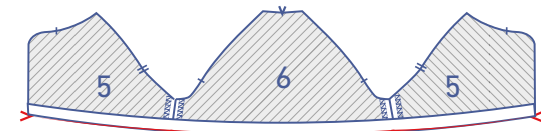
Press the hem allowance (= 5/8") over and open back out.



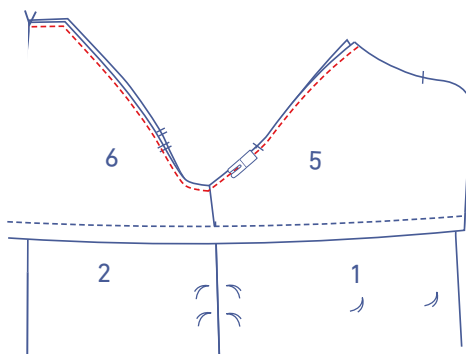
Fold the raw edge up to the pressed fold line.



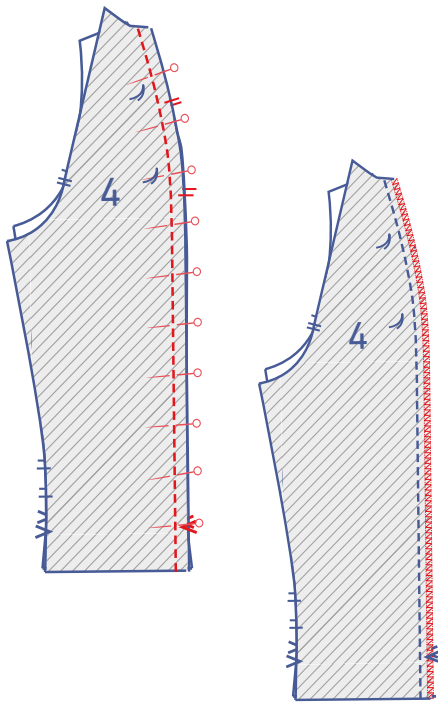
Fold again, now along the pressed fold line.



Sew into place right next to the edge.

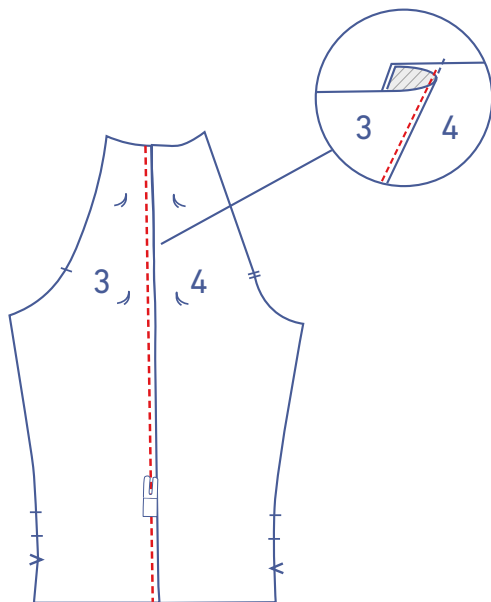


Pin the armhole of the storm flaps to the armhole of the coat with the right side of both pieces facing up. Sew these together at presser foot width from the edge.

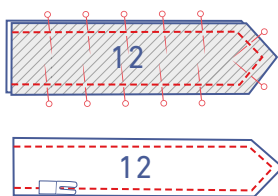


## 4

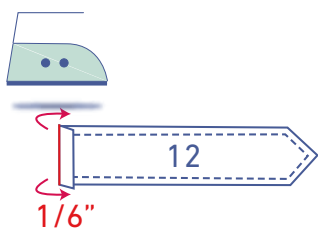
Pin and sew the curved edge of the sleeve front (3) and back (4) together. Finish the raw edges together with overlock stitching.



Press the seam allowance towards the sleeve front. Top stitch the sleeve front at 1/8" from the seam.

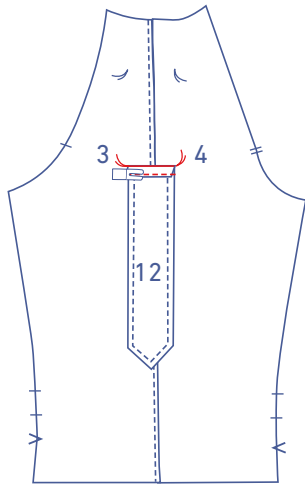


Pin the shoulder lapels (12) with the right sides facing and stitch all the way around, making sure to leave the bottom open as shown. Trim the corners and turn the right way out. Topstitch the indicated edges at presser foot width.

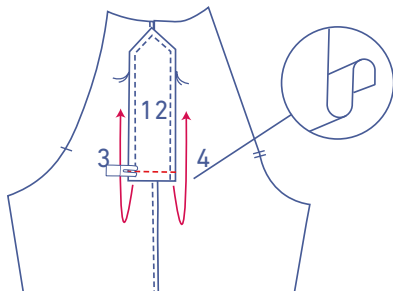


Press 1/6" of the raw edge onto the right side.

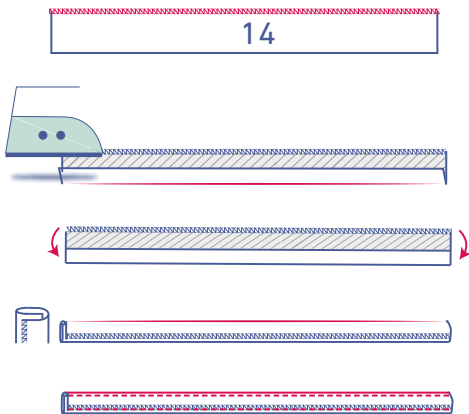




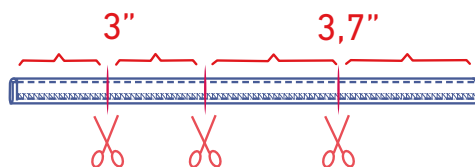
Pin the shoulder lapel fold to the top of the sleeve at the place indicated. The tip of the shoulder lapel should face the bottom of the sleeve. Sew into place at presser foot width.



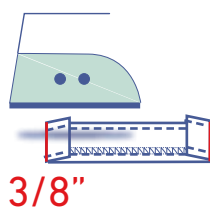
Fold the shoulder lapel back up and sew into place across the base through all layers.



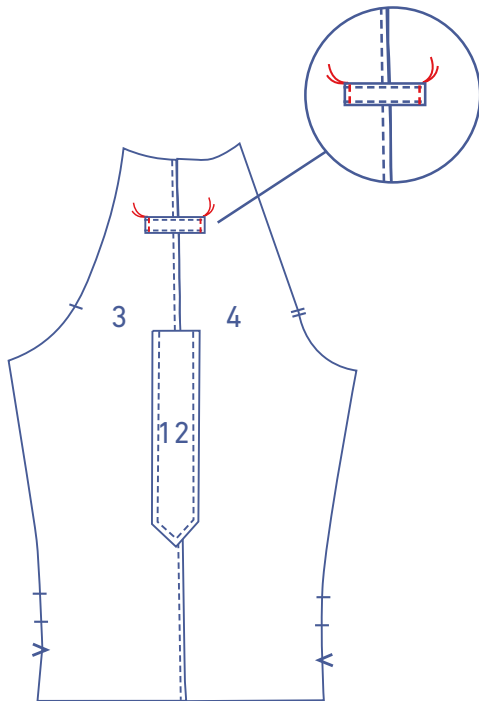
Finish 1 long edge of the belt loops with overlock stitching. Next, press the other long edge 1/6" inwards. Press the overlocked side onto the side you just pressed. Sew into place at 1/8" from the edges of both long edges.



Cut the belt loop strip into sections: 2 sections 3" wide and 2 sections 3,7" wide. The short pieces are the shoulder placket loops, while the long belt loops are for the belt.



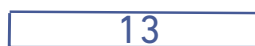
Fold both ends of the belt loops 3/8" over and press.



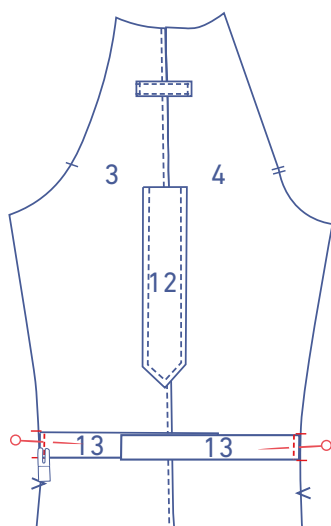
Sew into place on the sleeve at the indicated places.



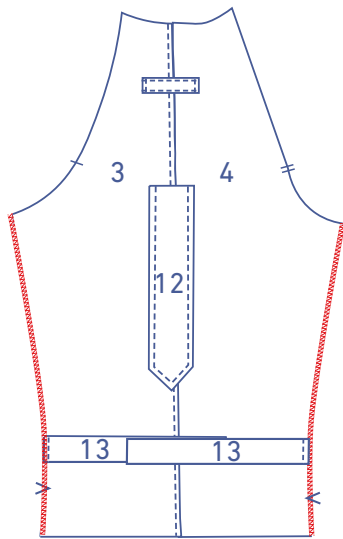
Fold the sleeve ties in (13) half lengthwise with the right side facing inwards. Sew the indicated edges closed.



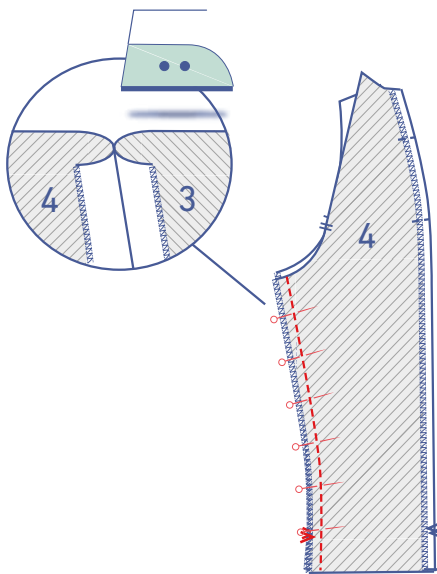
Turn the right way out.



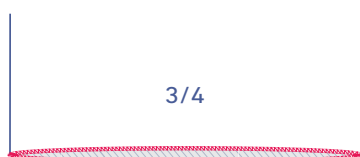
Pin the raw edges of the ties at the place indicated and sew into place at presser foot width.



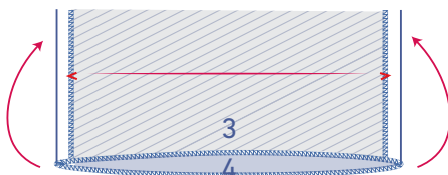
Finish the raw edges of the sleeve edges with overlock stitching.



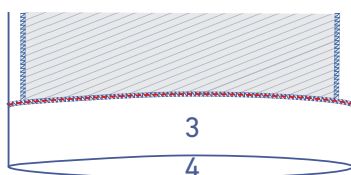
Pin and sew the underarm seams. Press open the seam allowances.

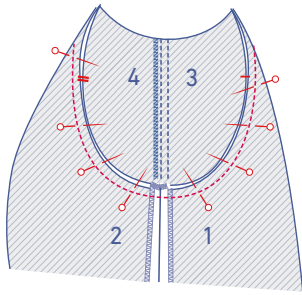


Finish the hem with overlock stitching.

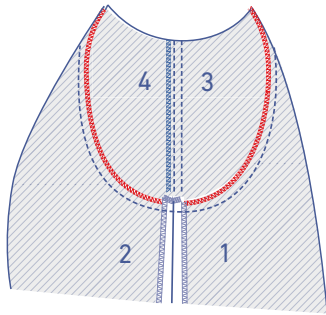


Press the hem allowance inwards and sew into place. However, be sure that the ties aren't accidentally sewn at the same time. That means that you can't sew all the way around in one go.

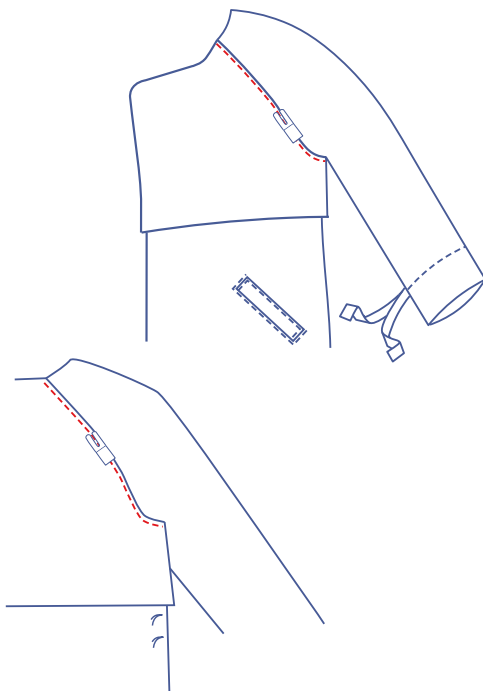




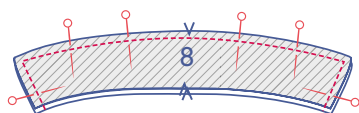
Pin and sew the armhole of the sleeve to the garment with the notches neatly aligned.



Finish the raw edges together with overlock stitching.

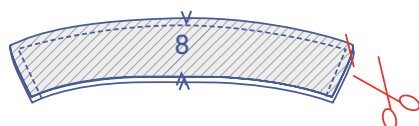


Top stitch the front and back at 1/8" from the seam.

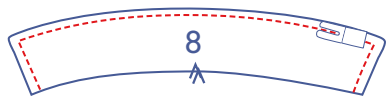


**5**

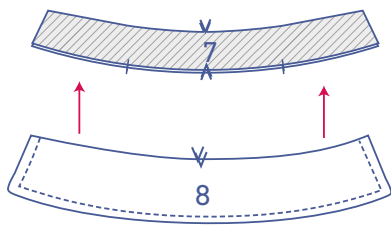
Pin and sew the indicated edges of both collar pieces (8).



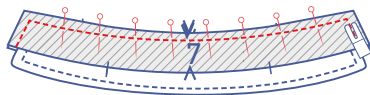
Trim the corners and turn right way out.



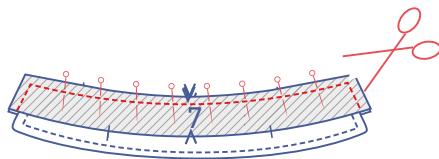
Top stitch at presser foot width.



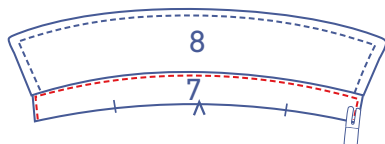
Stack both collar stands (7) with the right sides facing. Slide the collar between the collar stands.



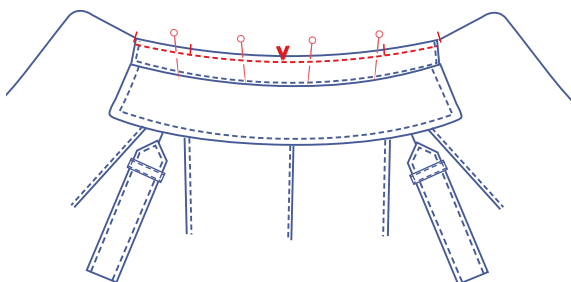
Sew into place as shown and then trim the corners.



Turn right way out and topstitch the collar stands together, 1/8" away from the edge.

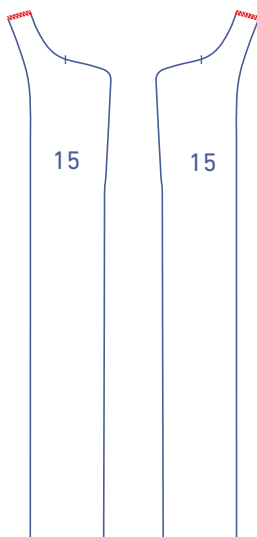


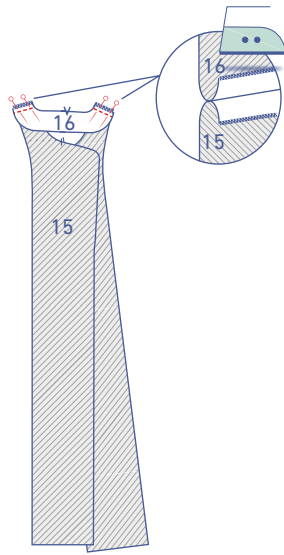
Pin and sew the collar to the neckline of the garment with the right sides facing. Be sure that the notches are neatly aligned and that the finished edge of the collar lines up with the notch on the front.



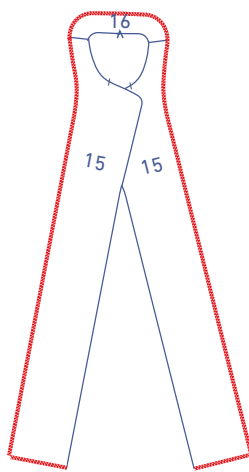
## 6

Finish the shoulder seams of the front facing (15) and back facing (16) with overlock stitching.





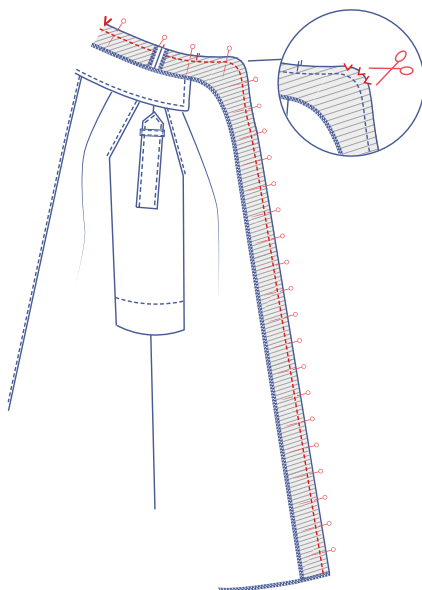
Pin and sew the shoulder seams. Press open the seam allowances.



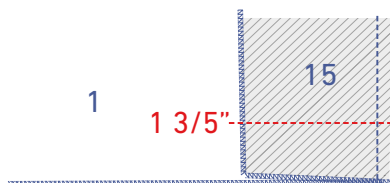
Finish the indicated contours of the facing with overlock stitching.



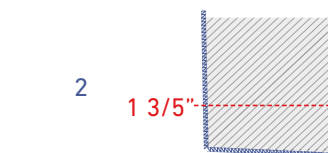
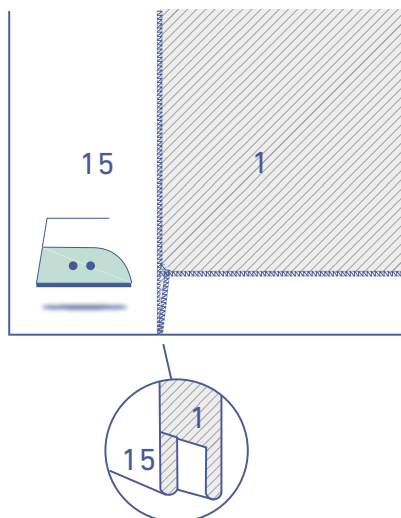
Finish the hem of the garment with overlock stitching.



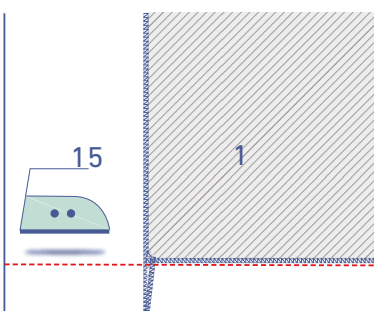
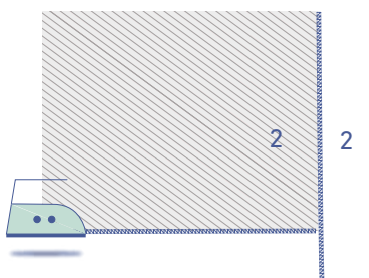
Pin and sew the CF and neckline of the garment and the facing into place all the way around. Trim the seam allowances and turn the facing onto the wrong side of the garment. Clip into the corners and trim, before pushing all the way out. Press flat.



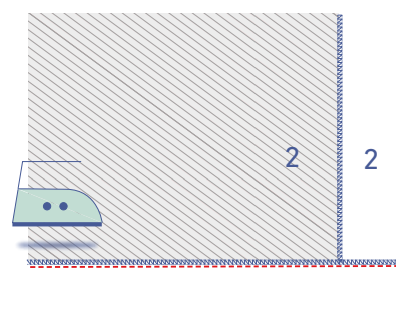
With right sides matching, sew the hem (of the facing and garment) together at 1 3/5" and turn the right way out.

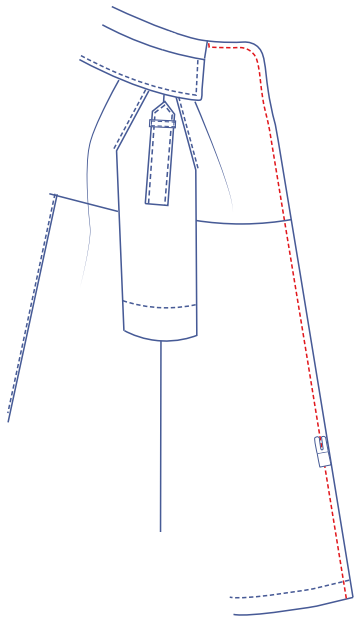


Fold the shaped facing at the slit in the CB back onto itself with right sides facing. Sew into place at 1 3/5" from the raw edge.

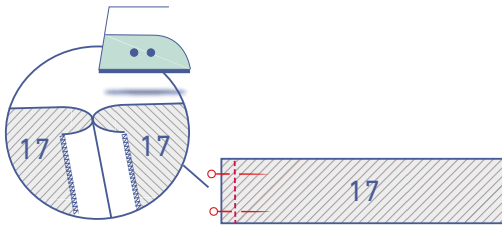


Press the hem allowance and sew into place.



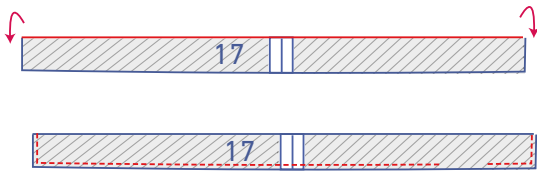


Top stitch the front and facing at presser foot width.

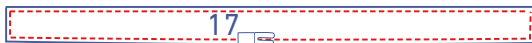


## 7

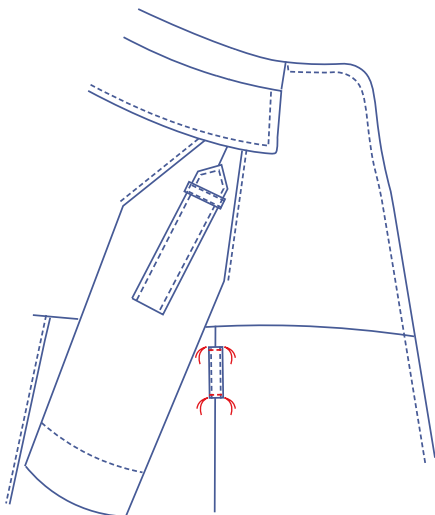
Place both belt pieces on top of each other with the right sides facing and sew into place. Press open the seam allowance.



Fold the belt in half lengthwise with the right sides facing. Sew into place all the way around, but leave a small opening to turn the belt the right way out when you're done.

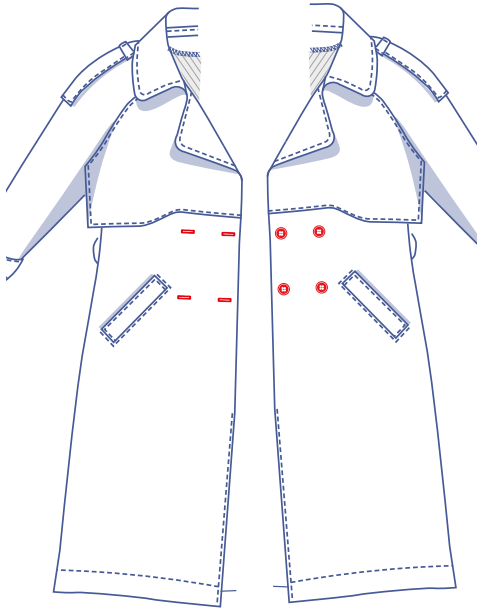


Trim the corners then turn the belt the right way out and topstitch all the way around at presser foot width.



Attach the loops at the places indicated on the side seam the coat.





## 8

Make buttonholes and sew the buttons on at the indicated places