

Cory by Fibre ⚡ood



Cory by Fibre Mood

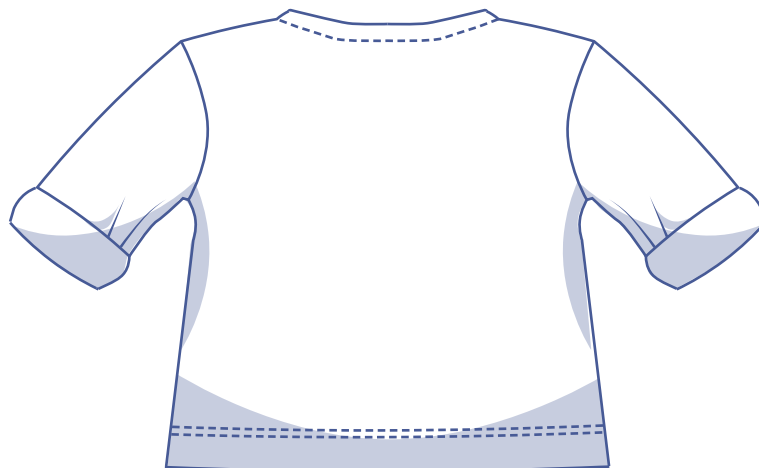
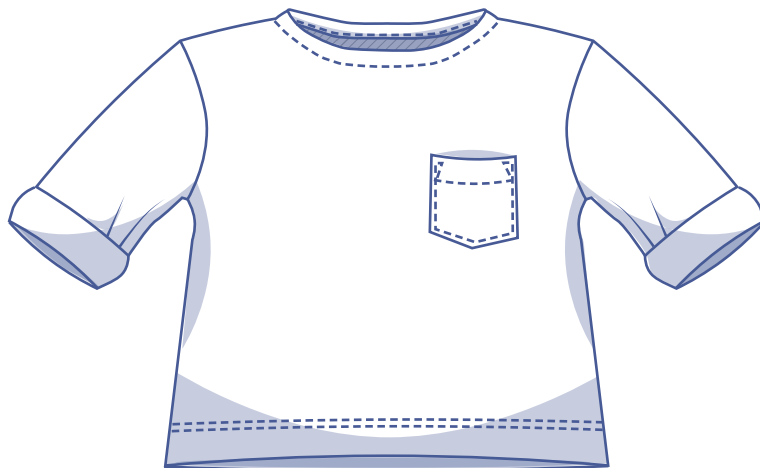


2 - 14 years

Cory is a unisex boat neck T-shirt and a must have for every wardrobe. The sleeves can be worn rolled up into cuffs.

Get creative with the grainline on the chest pocket or use a contrasting fabric to add your own twist on the Cory.

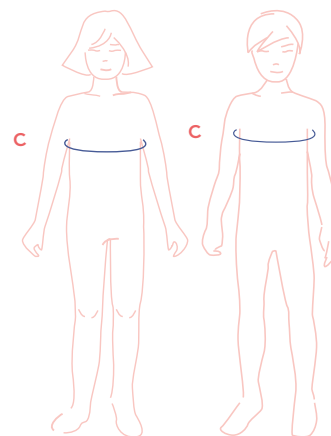
Why not make the **Afra T-shirt** for mum and the **Hugo T-shirt** for dad out of the the same fabric = matching outfits for the whole tribe!



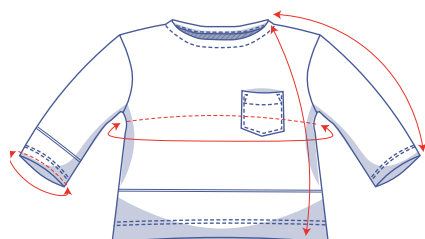
size chart (in inches)

size (age)	2	3	4	5	6	8	10	12	14
C	20.5	21.3	22	22.8	23.6	25.2	26.8	28.3	29.9

Chest (C): measure horizontally around the widest part of the chest.



finished garment measurements(in inches)



This chart's measurements are the pattern measurements based on the fabric type and serve as a reference. Ease has been added to the width measurements (on top of the exact body measurements) for a more comfortable fit and to achieve a looser cut. Depending on the preferred cut, you could possibly go a size smaller or larger than the size chosen.

size	2	3	4	5	6	8	10	12	14
length	13	14	14.75	15.75	16.75	18.50	20.25	22	23.75
sleeve length*	11.75	12.75	14	14.75	15.75	18	20	22.25	24.25
chest	26.50	27.25	28.25	29	29.75	31.25	32.75	34.50	36
hem circumference sleeve	6.50	6.75	7	7	7.25	7.75	8	8.50	8.75

* Including the shoulder length.

Compare the stated lengths to the measured or desired lengths. **Lengthen** or **shorten** the top and/or the sleeves by cutting the pattern pieces at the indicated double lines and then spreading the pattern pieces out X inches from each other or overlapping them where needed. Make sure that the CF and CB lines and the side seams are always straight.

IMPORTANT

Adjust the amount of fabric to be used based on the alterations.



— you can lengthen
or shorten the pattern here

supplies



- Thread
- Elastic bias tape: see table
- Fabric: see table

elastic bias tape (in yards)	2	3	4	5	6	8	10	12	14
length	½	½	½	½	½	½	½	½	½

fabric used (in yards) standard	2	3	4	5	6	8	10	12	14
fabric width 43"	¾	¾	¾	1	1	1	1 ¼	1 ¼	1 ¼
fabric width 55"	½	½	½	1	1	1	1 ¼	1 ¼	1 2/5

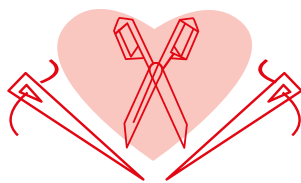
The corresponding fabric layout can be found as of page 6 of these sewing instructions.

fabric advice



The Cory T-shirt pattern is designed for stretch knits only. Viscose jersey, cotton jersey, French terry, stretch velvet and neoprene are all great options.

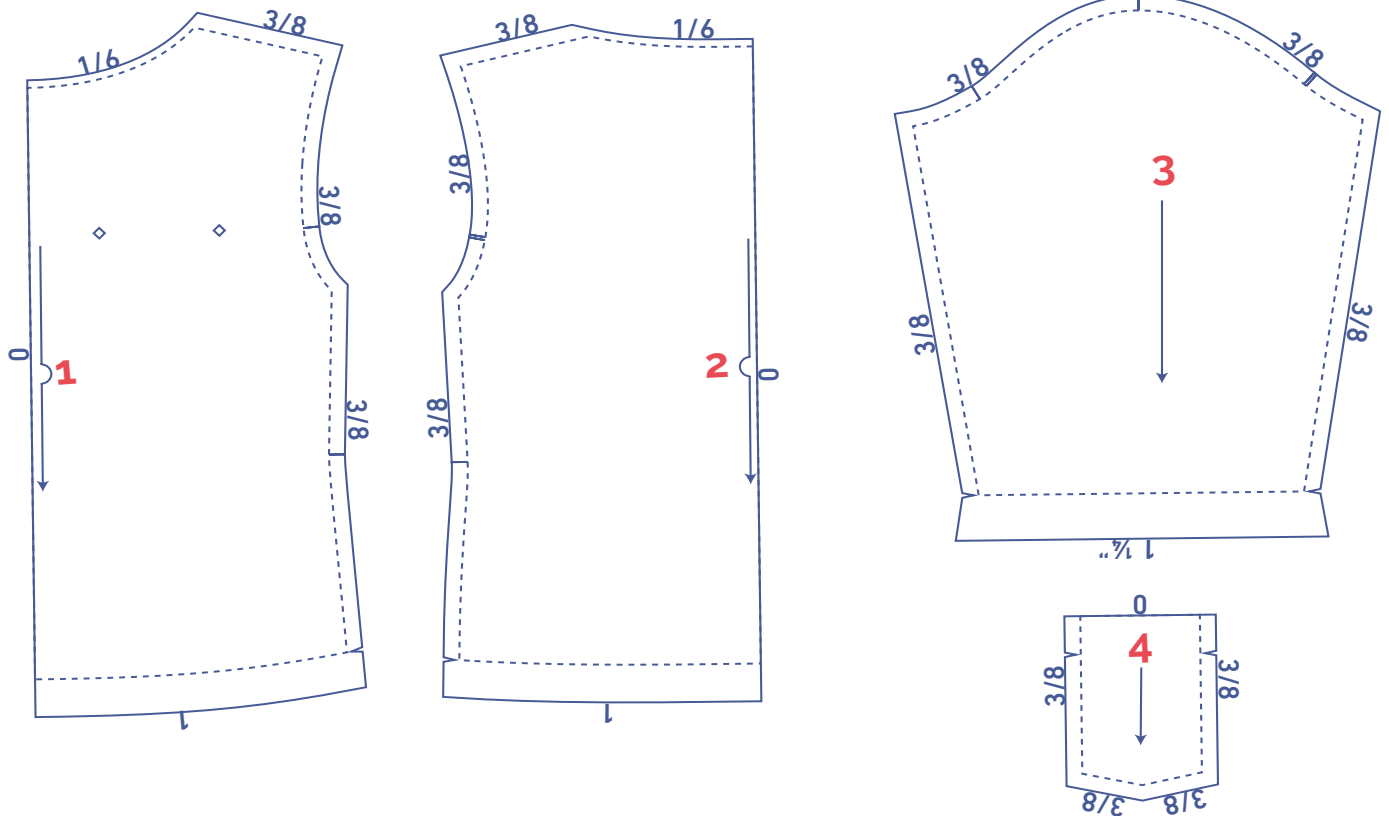
Proud to be #Sewista



pattern pieces & seam allowances (in inches)

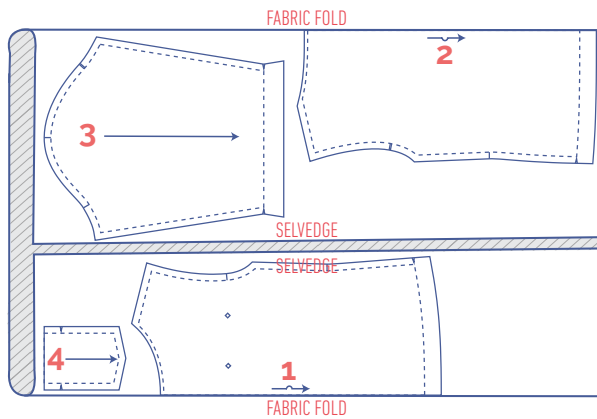
To sew the garment as described in the instructions, you must draw the illustrated seam allowances around the paper pattern pieces before cutting them out.

1. front: 1x on fabric fold
2. back: 1x on fabric fold
3. sleeve: 2x
4. chest pocket: 1x

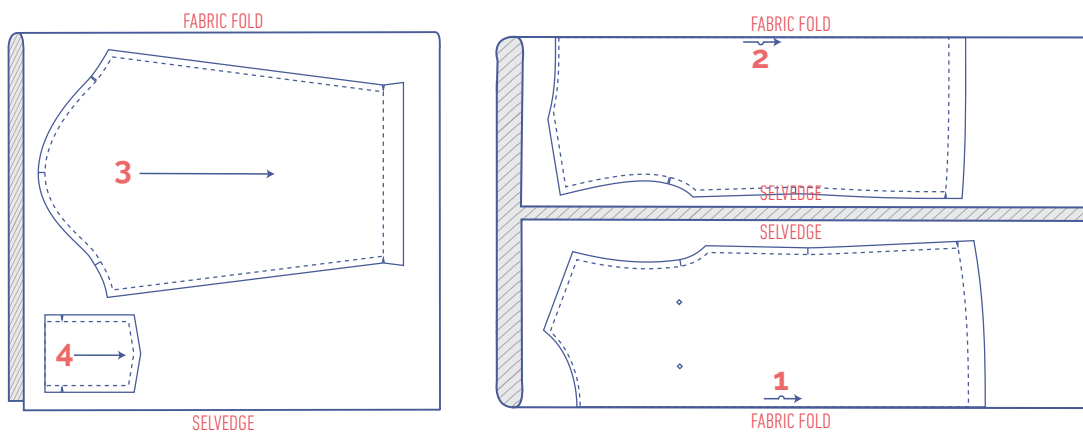


fabric layout for fabrics 43" wide

2 - 6 years



8 - 14 years

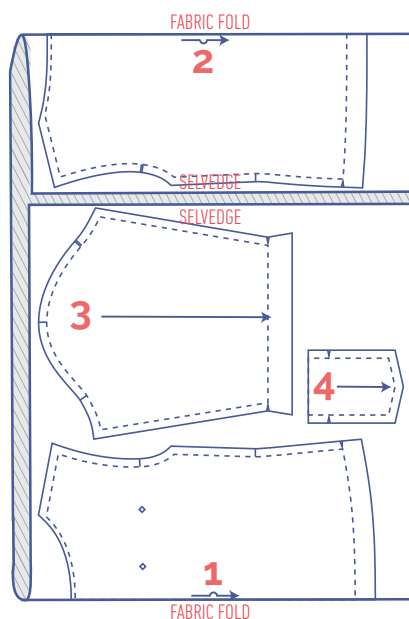


IMPORTANT

You only need pattern piece 4 once.

fabric layout for fabrics 55" wide

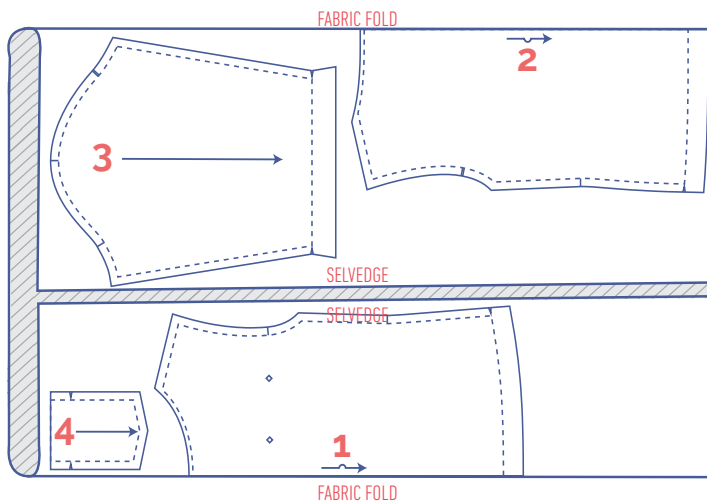
2 - 4 years



IMPORTANT

You only need pattern piece 4 once.

5 - 14 years



- Mark the next points with basting thread:



- Nick the pattern paper and fabric at the places where a single vertical line (I) and double vertical lines (II) are indicated.
- Cut a small notch out of the fabric at a V notch symbol or on the finished hemline.
- Cut a small notch (V notch) out of the pieces that lie on the fabric fold (—) to mark the middle of these pieces.

sewing instructions



The method used to finish the garment will depend on your chosen fabric. The pieces are always sewn together with right sides facing, unless stated otherwise.

F front

B back

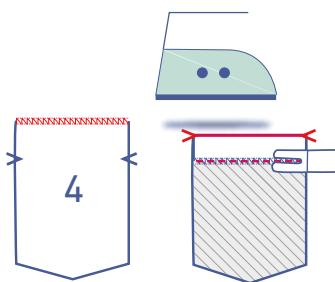
CF centre front

CB centre back

 right side

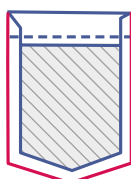
 wrong side

 bias tape (elastic)

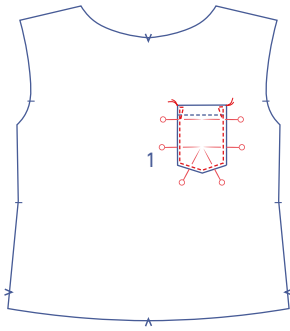


1

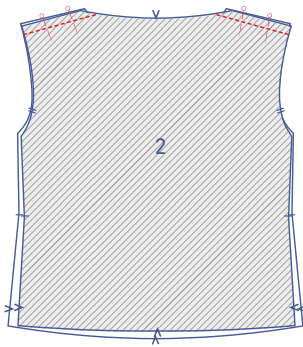
Finish the top of the pocket (4) with an overlock stitch. Now, press over at the V notches. Sew into place.



Press the remaining pocket edges 3/8" onto the wrong side.

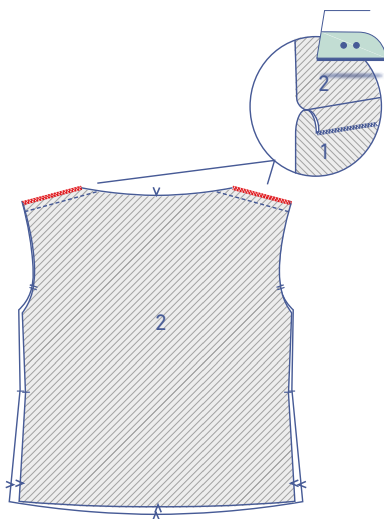


Pin the pocket in the place indicated on the front (1). Sew into place right next to the edge. At the top, sew reinforcement triangles on both sides.

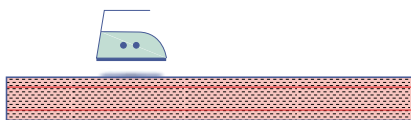


2

Pin and sew the shoulder seams.

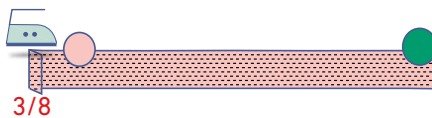


Finish the raw edges together with overlock stitching. Press the seam allowance towards the front.

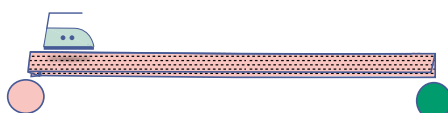


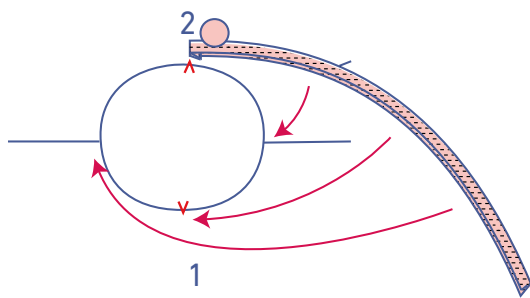
3

Press open, the pre-folded lines of the bias binding.

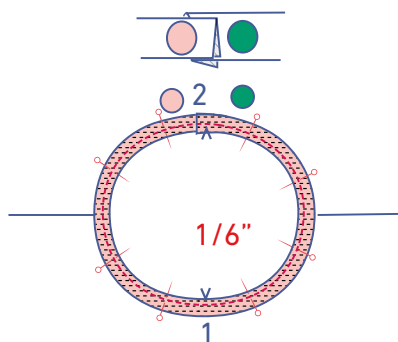


Press one short end of the bias binding over onto the wrong side (pink dot). Press the bias binding in half lengthwise with the right side of the fabric facing outwards.



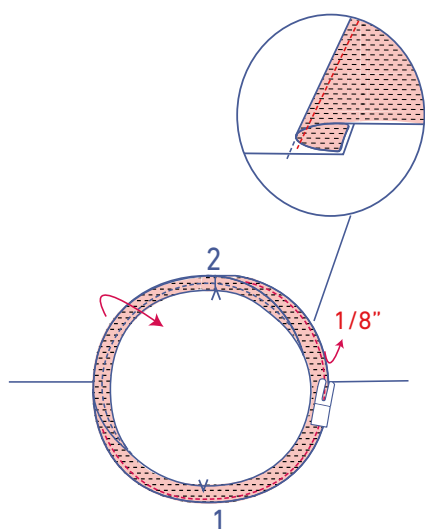


With raw edges together, pin the bias binding to the neck-line along the right side. The folded over end should line up with the CB.

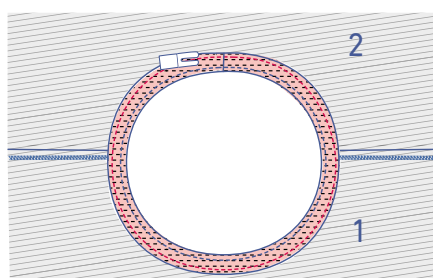


The end of the bias binding without the fold will end up sitting on top of the folded end.

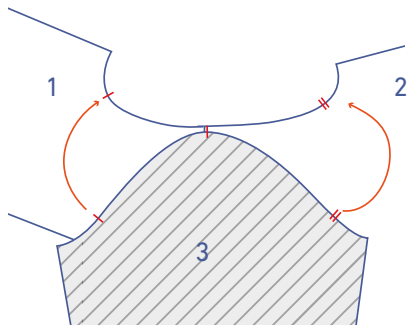
Sew into place at $1/6$ " from the raw edge.



Fold the bias binding and seam allowance towards the neck opening and understitch the bias at $1/8$ " from the seam through all layers (bias binding & seam allowance).

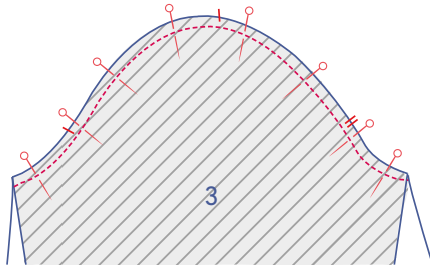


Fold the bias tape all the way over to the wrong side and sew it into place right next to the edge.

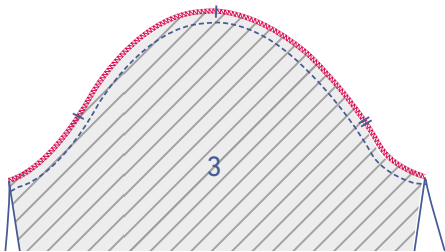


4

Pin and sew the top of the sleeve (3) (= the sleeve cap) to the armhole with the corresponding markings matching. The single nick marks the front, while the double nicks mark the back. The top nick should line up with the shoulder seam.

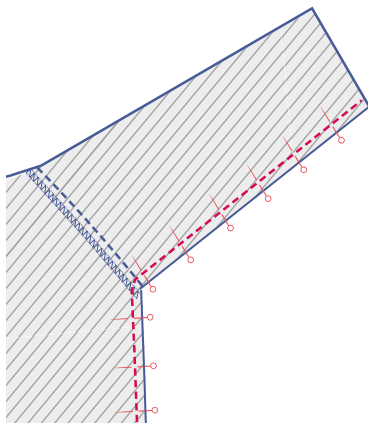


Finish the raw edges together with overlock stitching.

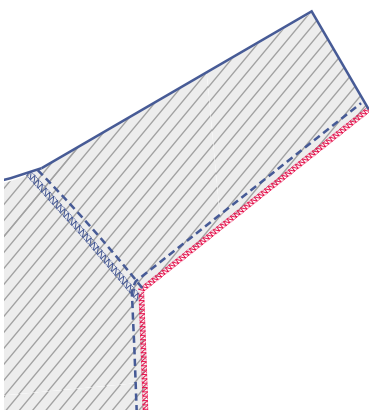


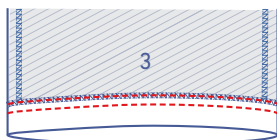
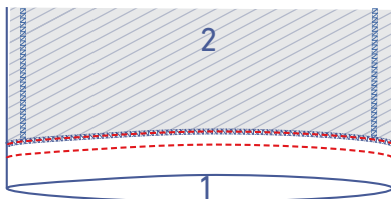
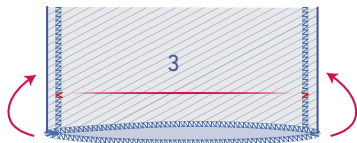
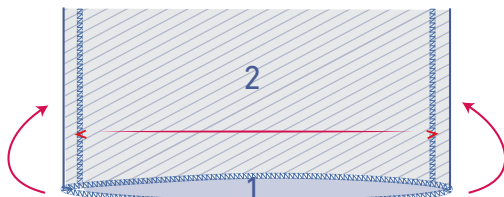
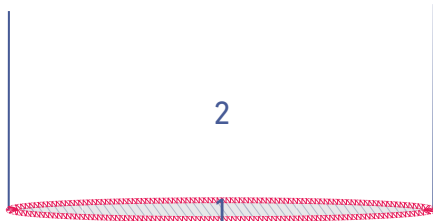
5

Pin and sew the side and underarm seams.



Finish the raw edges together with overlock stitching.





6

Finish the hem and sleeve hem with overlock stitching.

Press the hem and the sleeve hems over at the V notches.

Stitch the hem allowance into place with two rows of topstitching using a ballpoint needle.