

# Carole by Fibre ⚡ood

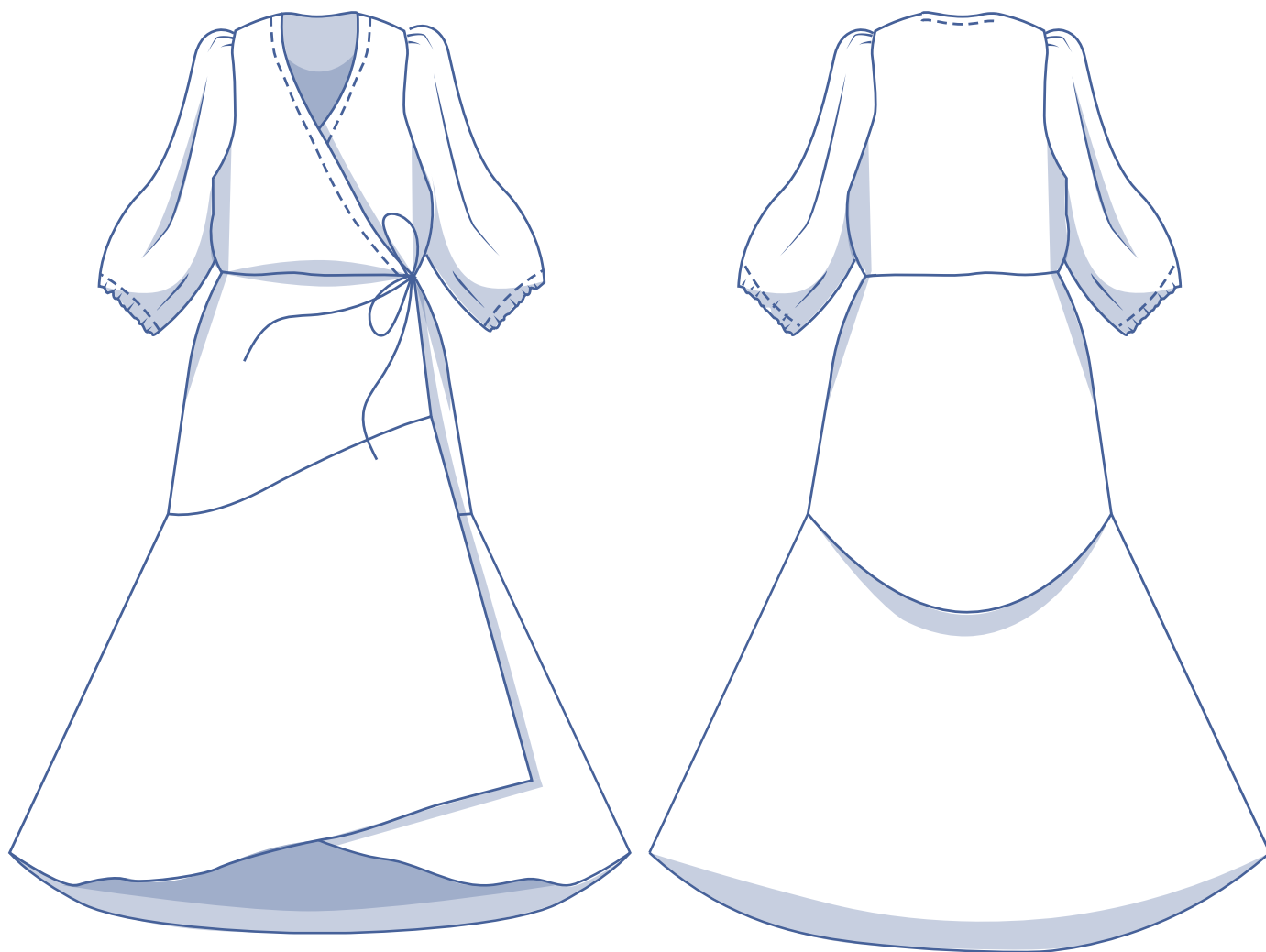


# Carole by Fibre Mood



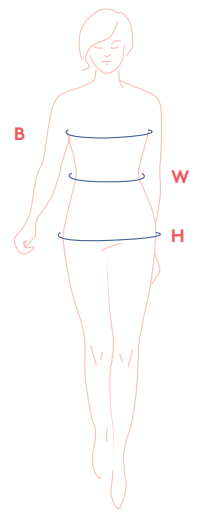
0 - 26

If you're still on the hunt for that festive season piece with the right amount of pizzazz, meet the Carole dress. A traditional wrap style with contemporary puffed sleeves straight from the runways, the Carole looks more complicated than it is...the best kind of project! You'll love the fluid drape of the skirt with its subtle high-low hem. We went for a silky velvet to make this festive version winterproof.



## size chart

size (US)	0	2	4	6	8	10	12	14	16	18	20	22	24	26
B (inches)	29.9	31.5	33.1	34.6	36.2	37.8	39.4	40.9	43.3	45.7	48	50.4	52.8	55.1
W (inches)	26	26.8	27.6	29.1	30.7	32.3	33.1	34.6	37.2	39.8	42.3	44.9	47.4	50
H (inches)	33.9	35.4	37	38.2	39.4	40.6	41.7	42.9	45.3	47.2	49.2	51.2	53.1	55.1



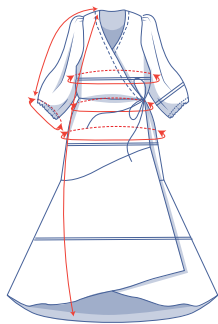
**Bust (B):** measure horizontally around the fullest part of the bust.

**Waist (W):** measure horizontally at the narrowest point of the body.

**Hip (H):** measure horizontally around the widest part of the lower body.

Choose your size based on your bust measurement. If your hips are wider than the stated hip measurements in the size chart, look at the chart below with hip measurements to see whether there's enough room at the hips or if the hip measurements will need to be altered. It's easy to do. If between sizes on the chart, blend the two sizes together by merging from one size line to the other when tracing the pattern.

## finished garment measurements (in inches)



This chart's measurements are based on the fabric type and serve as a reference. Ease has been added to the width measurements (on top of the exact body measurements) for a more comfortable fit and to achieve a particular cut (fitted, loose or oversized). Depending on the fit you want, you can choose to size up or down accordingly.

size	0	2	4	6	8	10	12	14	16	18	20	22	24	26
length	46.75	47	47.25	47.50	47.75	48	48.25	48.25	49	49.50	49.75	50	50.25	50.75
sleeve length*	21.25	21.50	21.75	21.75	22	22	22.25	22.25	22.50	22.75	23	23.25	23.25	23.50
chest	34.25	35.75	37.25	39	40.50	42	43.50	45.25	47.75	50	52.25	54.75	57	59.50
waistline	32	32.75	33.50	35.25	36.75	38.25	39	40.75	43.25	45.75	48.25	51	53.50	56
hips	36	37.75	39.25	40.50	41.75	42.75	44	45.25	47.25	49	51	53	55	57
sleeve hem circumference**	20.25	20.75	21	21.50	21.75	22.25	22.75	23.25	24.25	25	25.50	26.50	27.50	28.25

\* Including the shoulder length.

\*\* Without elastic.

Compare the stated lengths to the measured or desired lengths. **Lengthen** or **shorten** the dress and/or sleeves by cutting the pattern pieces at the place(s) indicated by a double line on the drawing and then spreading the pattern pieces out X inches from each other or overlapping them, where necessary. Make sure that the CF and CB lines and the side seams are always straight.



### IMPORTANT

Adjust the fabric to be used based on these alterations.

## supplies



- Thread
- Iron-on interfacing (facing): max. 0.6 yd
- Elastic band: see table
- Fabric: see table

elastic band	0	2	4	6	8	10	12	14	16	18	20	22	24	26
1/6" wide	2x 0.32	2x 0.32	2x 0.33	2x 0.33	2x 0.34	2x 0.35	2x 0.36	2x 0.36	2x 0.37	2x 0.39	2x 0.40	2x 0.41	2x 0.42	2x 0.43

fabric used (in yards) standard	0	2	4	6	8	10	12	14	16	18	20	22	24	26
fabric width 55"	3 ½	3 ¾	3 ¾	3 ¾	3 ¾	4	4	4	4 ¼	4 ¼	4 ¼	5 ¼	5 ½	5 ½

The corresponding fabric plan can be found on the last page of these sewing instructions.

## fabric advice



There are plenty of options when it comes to the Carole dress. Choose a fabric with a soft fluid drape, like a stretch velour or viscose jersey. If it's a statement you want to make, go for a fabric with volume and body, like a brocade.

# sewing instructions



The method used to finish the garment will depend on your chosen fabric. The pieces are always sewn together with right sides facing, unless stated otherwise.

F front

B back

RF right front 

LF left front 

CF centre front

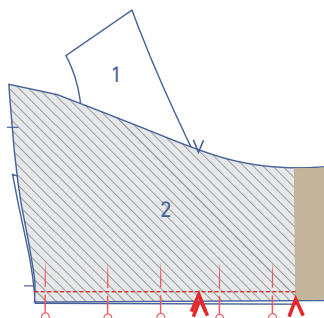
CB centre back

 right side

 wrong side

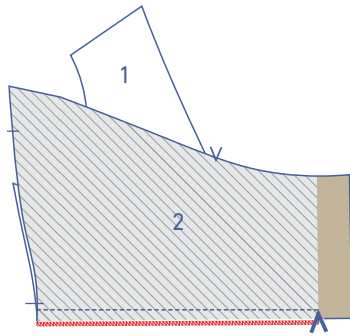
 iron-on interfacing

 elastic band

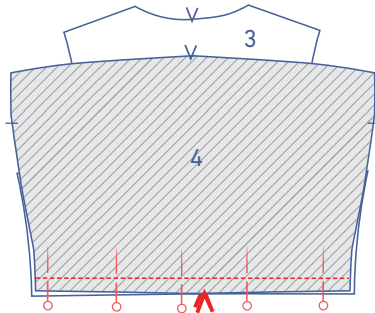


## 1

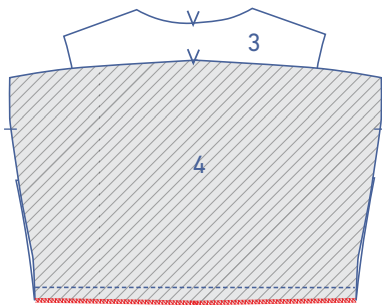
Pin the top front (1) and front centre piece (2) together with the V notches indicating the CF matching. Sew in place up to the V notch on the self-facing. There should be 1 cm of the top front's seam allowance remaining.



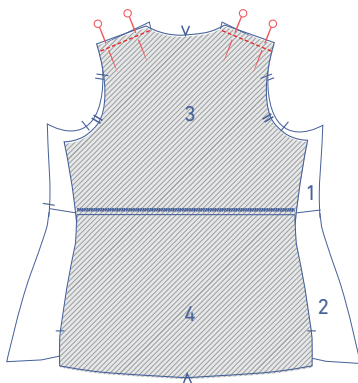
Finish the raw edges together with overlock stitching.



Pin and sew the top back (3) and back centre piece (4) together with the V notches matching.

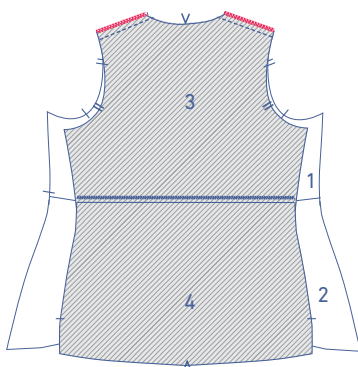


Finish the raw edges together with overlock stitching.

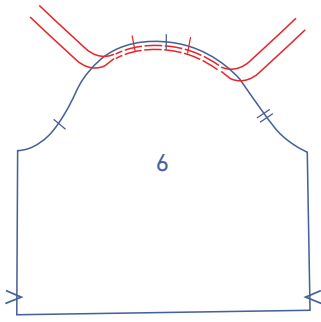


## 2

Pin and sew the shoulder seams.

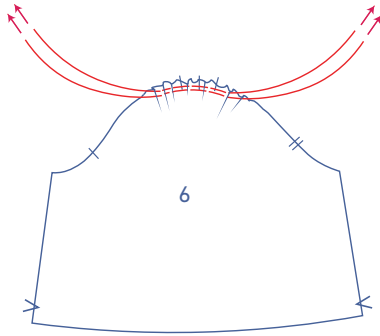


Finish the raw edges together with overlock stitching.

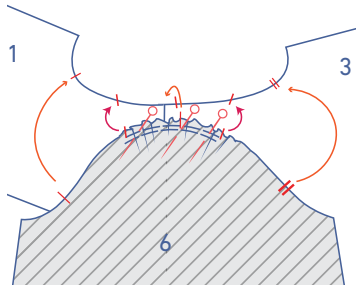
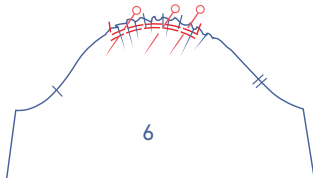


### 3

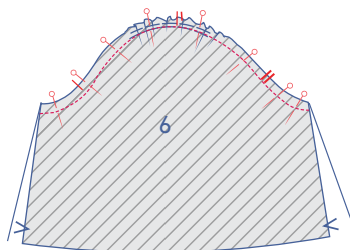
Sew 2 parallel rows of basting stitch along the top of the sleeve (6), using a long stitch length at a low thread tension. Sew just past the nicks on either side, without backstitching at the start or finish. Leave the thread tails long.



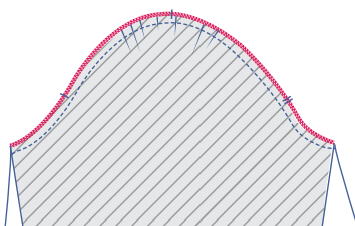
Carefully tug the ends of the threads to pull the fabric into gathers. Pin temporarily in place.

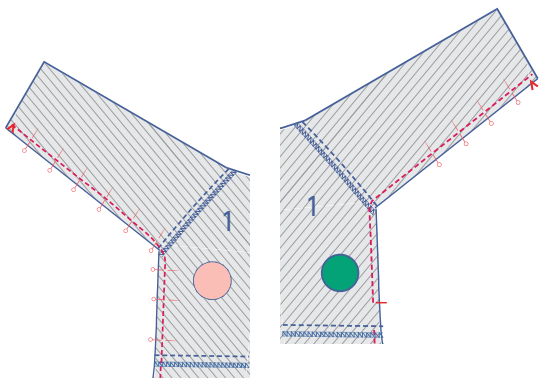


Pin and sew the top of the sleeve (= sleeve cap) to the armhole with the corresponding nicks matching. The single nick marks the front, while the double nicks mark the back. The single nick at the top should be perfectly aligned with the shoulder seam. Distribute the 'excess' fabric evenly between the nicks.



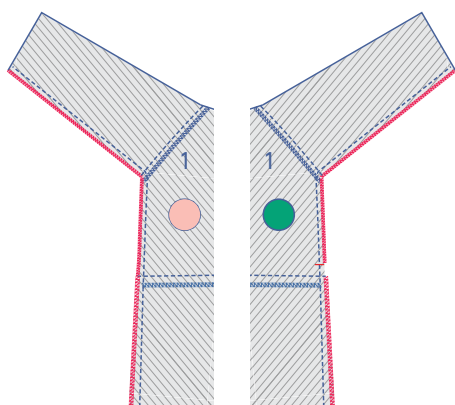
Finish the raw edges together with overlock stitching.



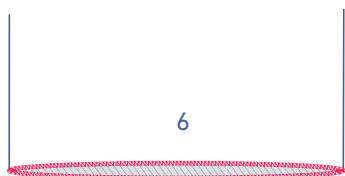


## 4

Pin and sew the side and underarm seams. Important: Leave an opening in the right side seam from the single nick up to the seam.

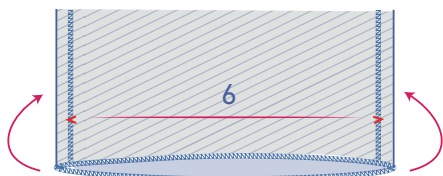


Finish the raw edges together with overlock stitching. Overlock the raw edges on the right side seam up to the opening and then continue overlocking below the dividing seam.

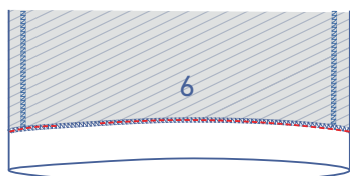
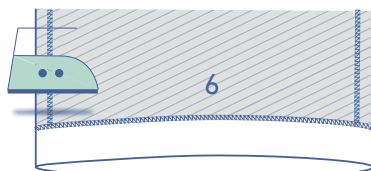


## 5

Finish the sleeve hem with overlock stitching.

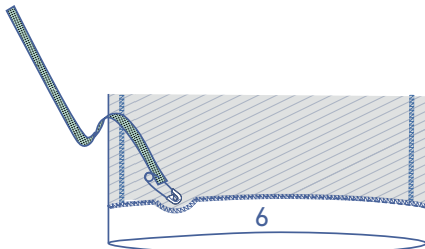


Press the hem allowance over at the V notches.

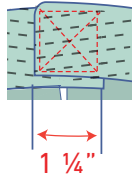


Sew into place at the overlock stitching, but leave a small opening so that the elastic band can be threaded through.

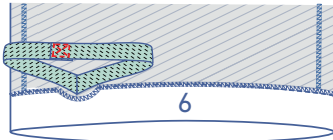




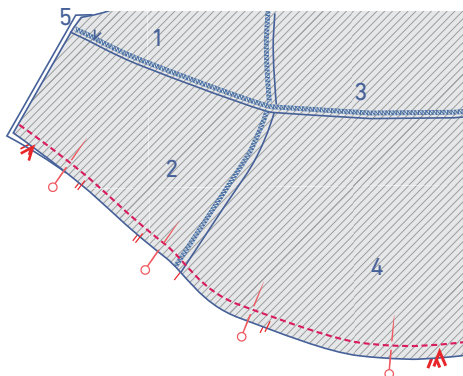
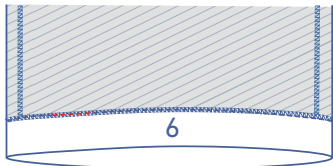
Thread the elastic through the opening.



Allow 4 1/4" of the ends of the elastic to overlap. Sew into place, making a Box X stitch.

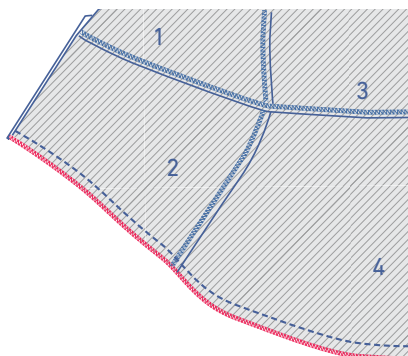
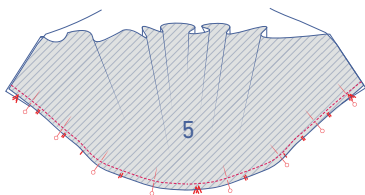


Pull the elastic through the tunnel completely and sew the opening closed.

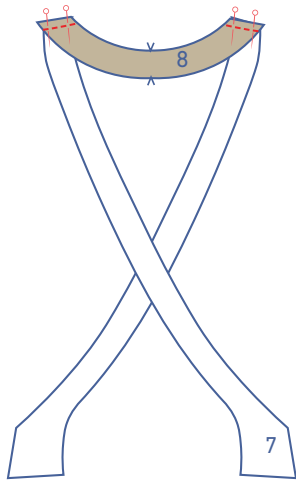


**6**

Pin and sew the skirt (5) to the top with the corresponding nicks matching.

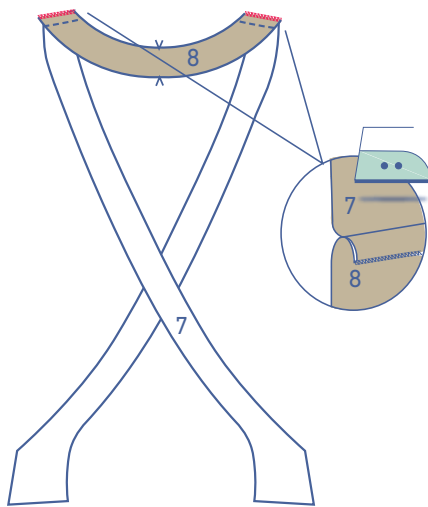


Finish the raw edges together with overlock stitching.

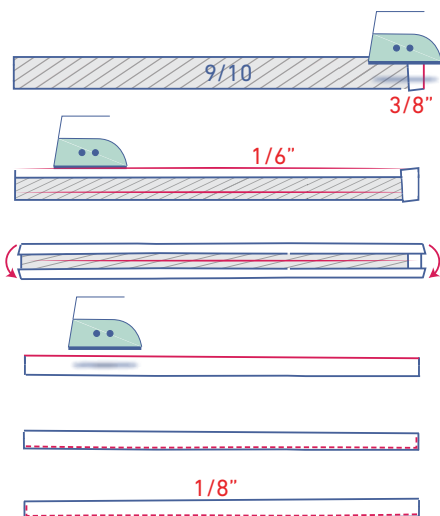


## 7

Pin and sew the shoulder seams of the neck facing front (7) and the neck facing back (8).

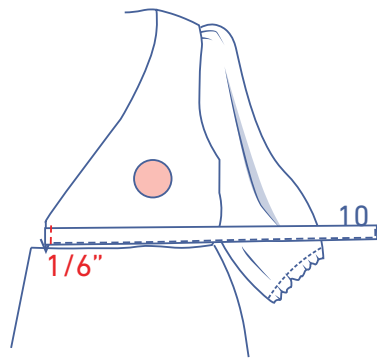


Finish the raw edges together with overlock stitching and press the seam allowance towards the back.

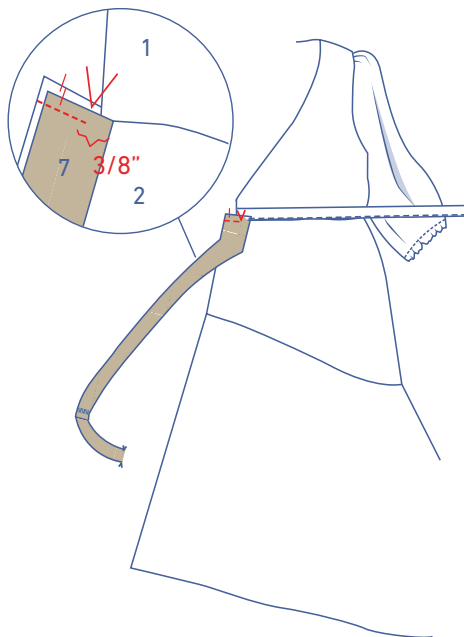
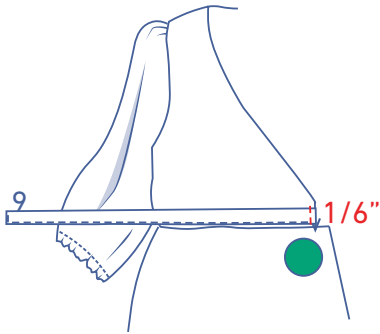


## 8

Press the short side of the LF ribbon (9) and RF ribbon (9) over  $\frac{3}{8}$ " to the wrong side. Then press the long sides  $\frac{1}{6}$ " cm over. Fold in half and stitch all the way around at  $\frac{1}{8}$ " from the edge.

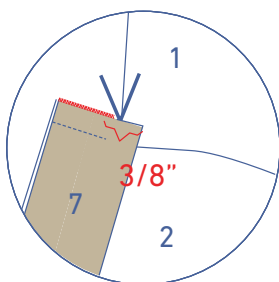


Pin the ribbons with the raw edges to the front. Sew in place at  $\frac{1}{6}$ " from the edge.

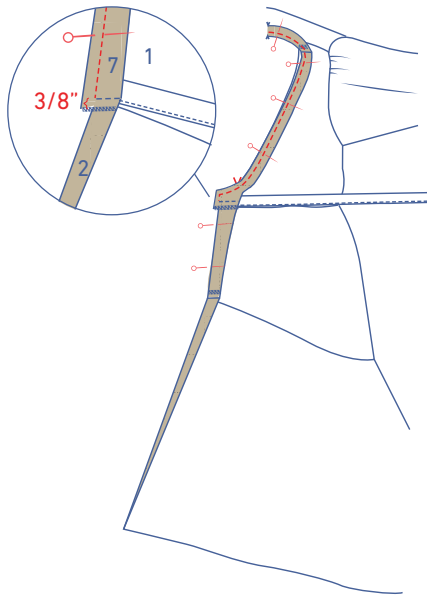


**9**

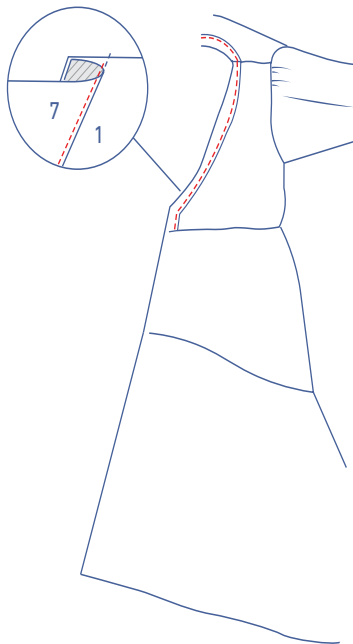
Pin and sew the bottom of the neck facing to the self-facing of the front centre piece up to the V notch, making sure the corresponding nicks are matching.



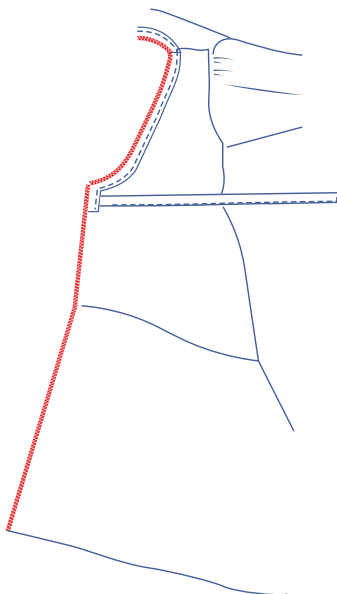
Finish the raw edges together with overlock stitching.



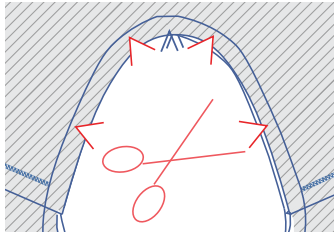
Fold the shaped facing of the front centre piece + skirt over to the V notch with the right side facing inwards. Pin and sew the neck facing to the top front piece.



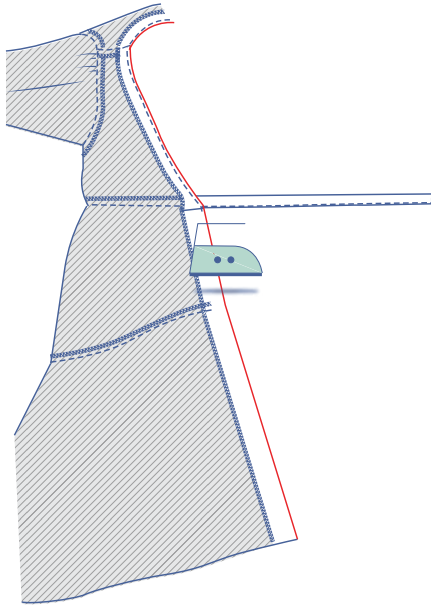
Fold the seam allowance towards the facing. Understitch the facing at  $\frac{1}{8}$ " from the seam allowance through all layers (facing+seam allowance).



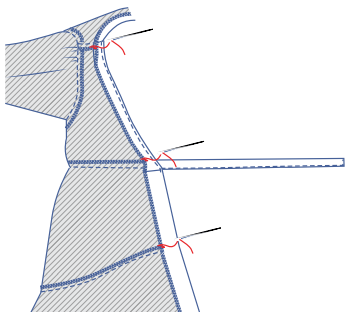
Finish the indicated raw edges with overlock stitching.



To create a smooth neckline curve, notch the seam allowances as shown.



Fold the facing to the wrong side of the garment.



Use a few stitches to sew the facing into place along the shoulder seams.

## pattern pieces & seam allowances (in inches)

To sew the garment together as described in the instructions, you must draw the illustrated seam allowances around the paper pattern pieces before cutting them out.

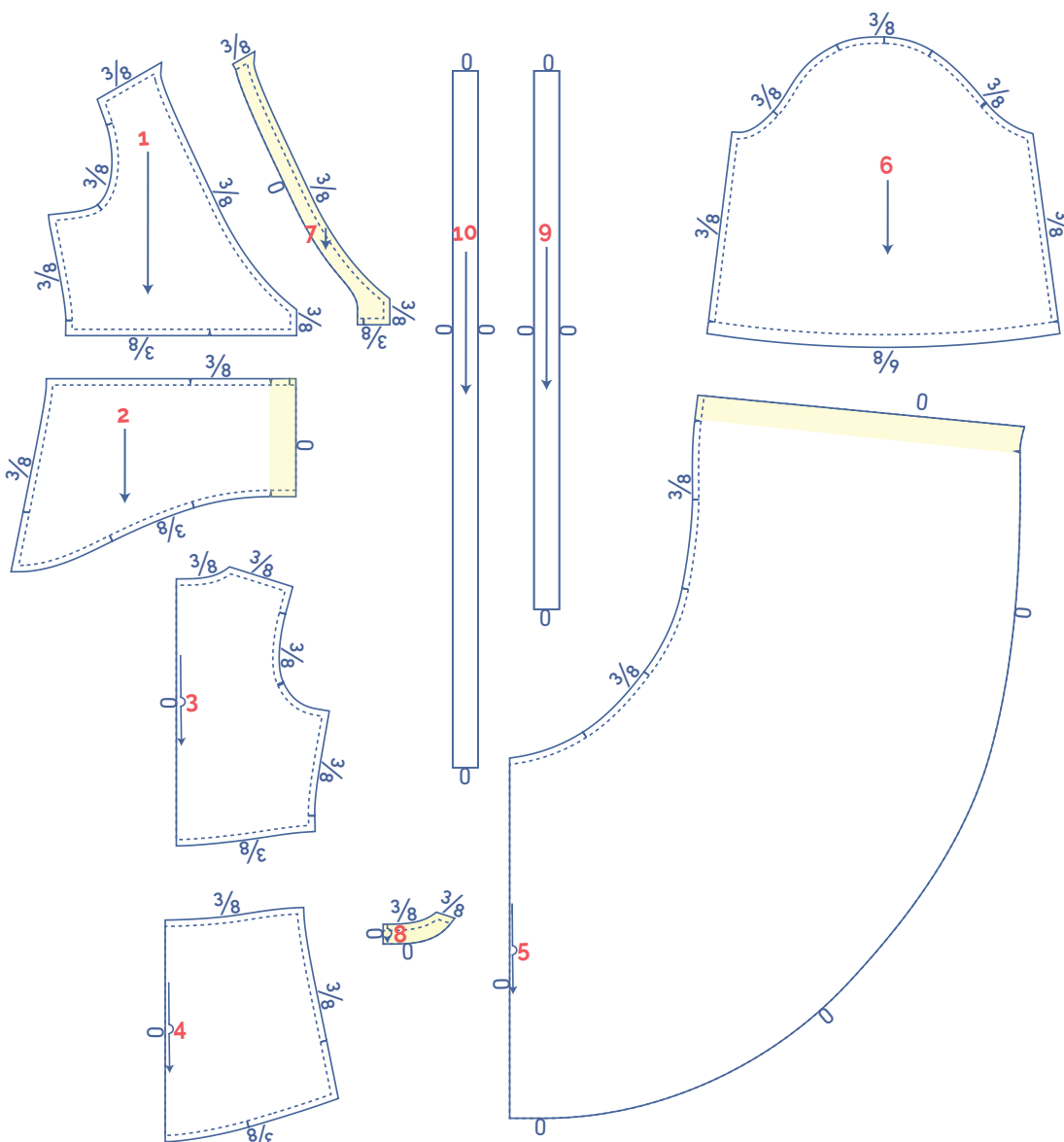
1. top front piece: 2x
2. front centre piece: 2x
3. top back piece: 1x on fabric fold
4. back centre piece: 1x on fabric fold
5. skirt: 1x on fabric fold
6. sleeve: 2x
7. facing front: 2x
8. facing back: 1x on fabric fold
9. ribbon RF: 1x. You will need to draw this pattern piece yourself. Draw a rectangle 85 x 1 1/4" (sz. 0-12), 100 x 1 1/4" (sz. 14-26).
10. ribbon LF: 1x. You will need to draw this pattern piece yourself. Draw a rectangle 110 x 1 1/4" (sz. 0-12), 125 x 1 1/4" (sz. 14-26).

### IMPORTANT

The edges of this fabric don't necessarily need to be finished since they don't fray. If you do go for a fabric that frays, make sure to include a hem allowance at pattern piece 5.

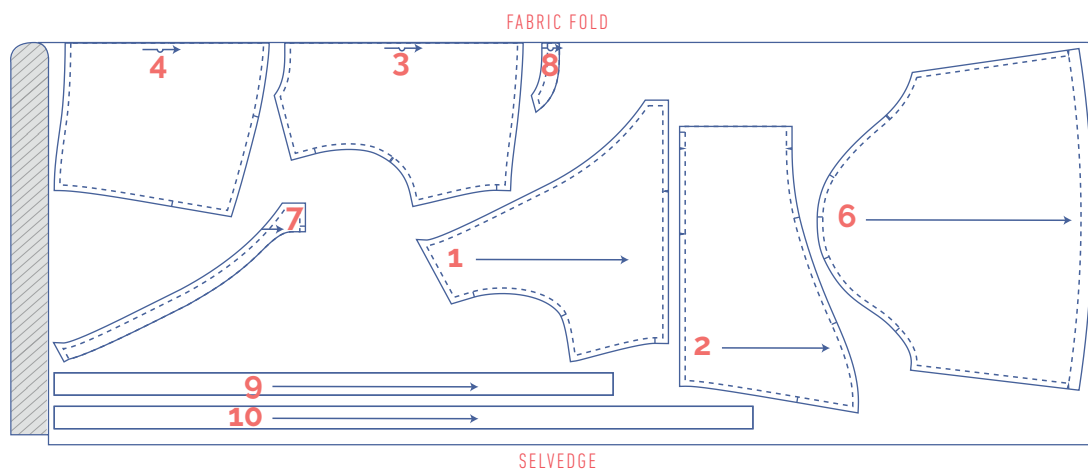
### IMPORTANT

The pieces highlighted in light yellow are attached along the wrong side using iron-on interfacing.



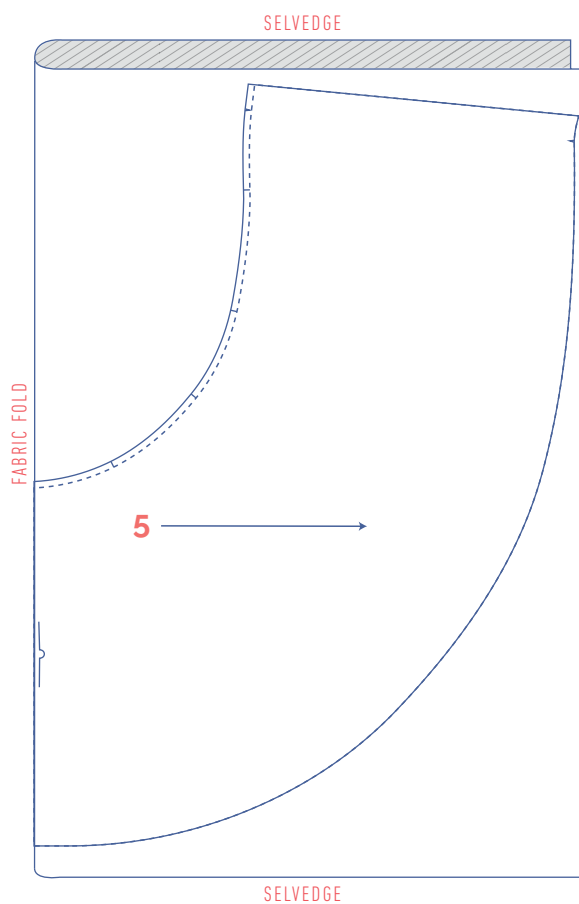
# fabric plan for fabrics 55" wide

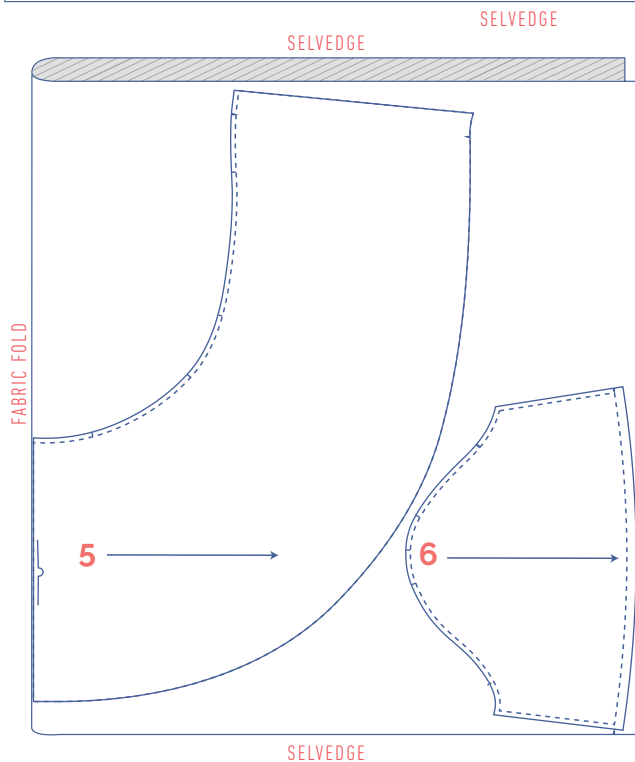
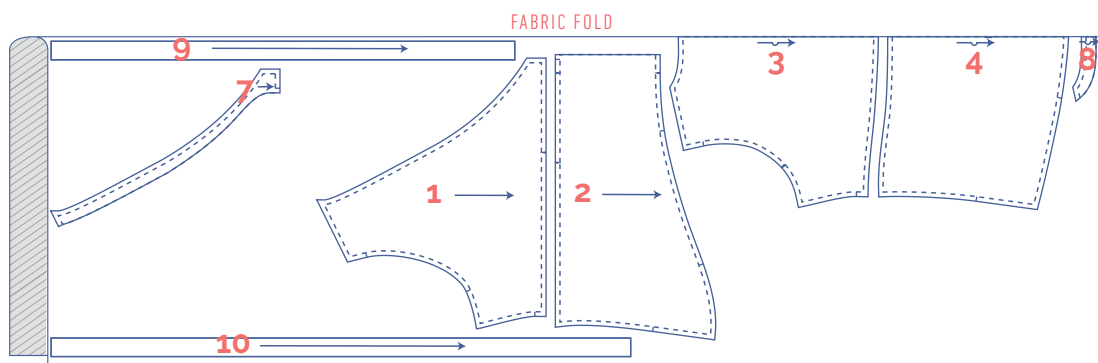
0 - 20



## IMPORTANT

You only need pattern pieces 9 and 10 once.





### IMPORTANT

You only need pattern pieces 9 and 10 once.

- Mark the following points using basting thread:
- Nick the pattern paper and fabric at the places where a single vertical line (I) and double vertical lines (II) are indicated.
- Cut a small corner out of the fabric at a V notch symbol or on the finished hemline.
- Cut a small corner (V notch) out of the pieces that lie on the fabric fold (—) to mark the middle of these pieces.