

Leah by Fibre ⚡ood



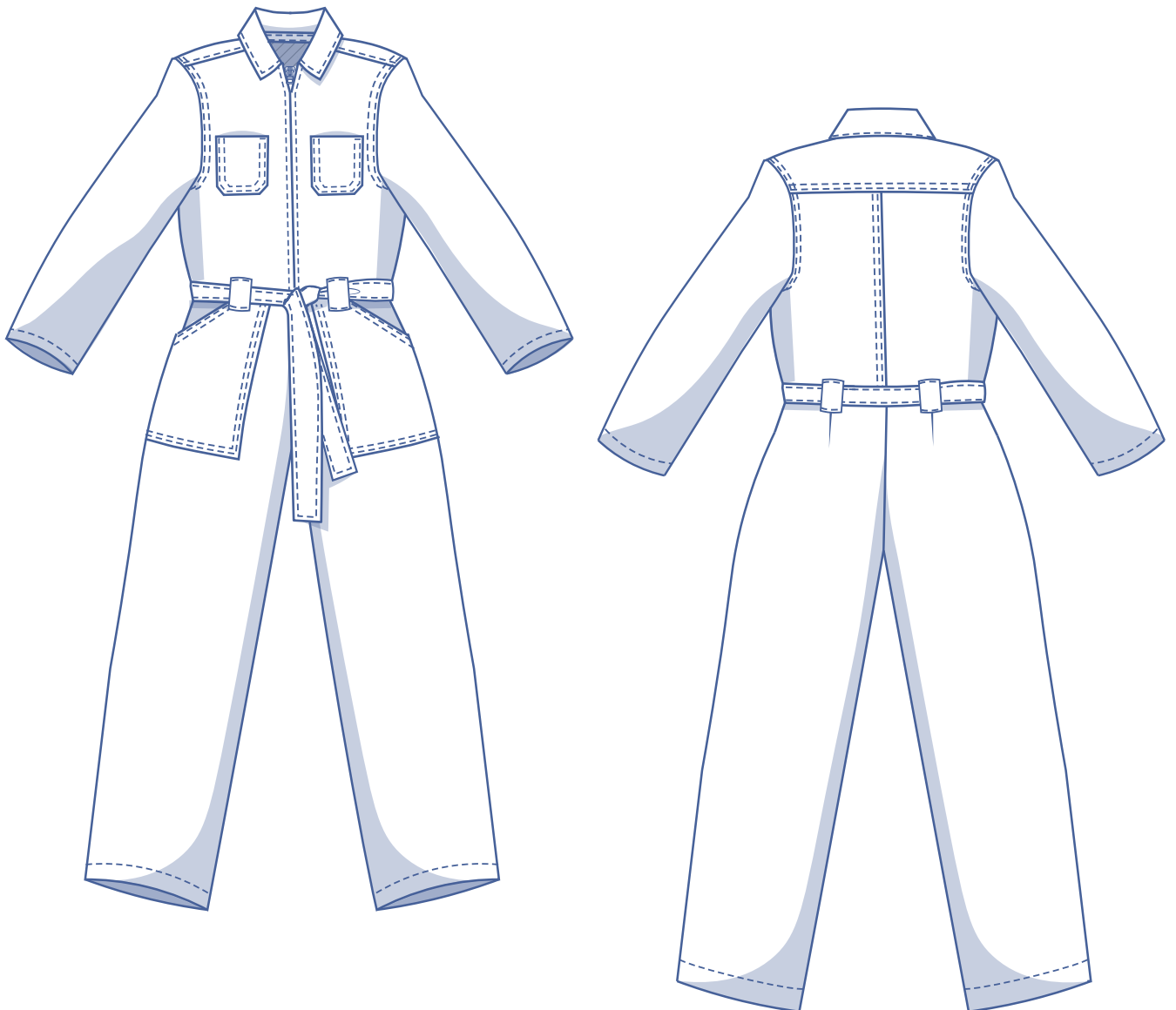
Leah by Fibre Mood



0 - 26

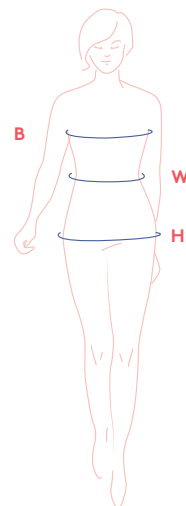
That's right, jumpsuits and boilersuits are still trending this season. Leah takes the classic workwear overalls and turns them into something special in the details with topstitching, chest pockets and commodious hip pockets.

Wear it loose and oversized or belted at the waist with the self-fabric tie, for a feminine touch.



size chart

size	0	2	4	6	8	10	12	14	16	18	20	22	24	26
US	0	2	4	6	8	10	12	14	16	18	20	22	24	26
B (inches)	29.9	31.5	33.1	34.6	36.2	37.8	39.4	40.9	43.3	45.7	48	50.4	52.8	55.1
W (inches)	26	26.8	27.6	29.1	30.7	32.3	33.1	34.6	37.2	39.8	42.3	44.9	47.4	50
H (inches)	33.9	35.4	37	38.2	39.4	40.6	41.7	42.9	45.3	47.2	49.2	51.2	53.1	55.1



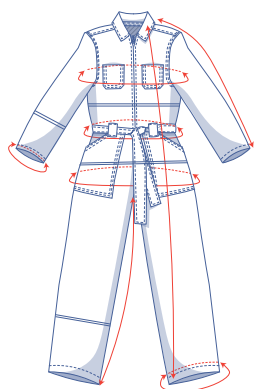
Bust (B): measure horizontally around the fullest part of the bust.

Waist (W): measure horizontally at the narrowest point of the body.

Hip (H): measure horizontally around the widest part of the lower body.

Choose your size based on your bust and hip measurements. If between sizes on the chart, blend the two sizes together by merging from one size line to the other when tracing the pattern.

finished garment measurements (in inches)



This chart's measurements are based on the fabric type and serve as a reference. For a more comfortable fit and to achieve a particular cut (fitted, loose or oversized), these measurements include an amount of 'ease' in the width. Depending on how you want your finished garment to fit, size up or down accordingly.

size	0	2	4	6	8	10	12	14	16	18	20	22	24	26
length	57.75	58.25	58.75	59.25	59.50	60	60.25	60.75	61.75	62.25	62.75	63.25	63.75	64.25
inseam length	27.75	28	28	28	28	28	28	28	28.25	28.25	28.25	28.25	28.25	28.50
sleeve length*	29.25	29.50	29.50	29.75	29.75	30	30	30	30.25	30.50	30.50	30.75	31	31
bust	35.50	37	38.50	40.25	41.75	43.50	45	46.50	49	51.25	53.75	56	58.50	60.75
waistline	34	34.75	35.50	37	38.75	40.25	41	42.50	45.25	47.75	50.25	52.75	55.50	58
hips	39	40.75	42.75	44	45.25	46.75	48	49.50	52.75	55	57	59.25	61.50	64
trouser hem circumference	17.25	18	18.50	19	19.75	20.25	20.75	21.50	22.25	23	23.75	24.50	25.50	26.25
sleeve hem circumference	11.50	11.75	12	12	12.25	12.50	12.75	13	13.25	13.50	13.75	14	14.25	14.75

* Including the shoulder length.

Compare the stated lengths to the measured or desired lengths. **Lengthen** or **shorten** the trouser legs, rise, top and/or the sleeves by cutting the pattern pieces at the place(s) indicated with double lines on the illustration and then spreading the pattern pieces out X inches from each other or overlapping them where needed. Make sure that the CF and CB lines and the side seams are always straight.



IMPORTANT

Adjust the amount of fabric to be used based on the alterations.

supplies



- Thread
- Closed-end zip: see table
- Iron-on interfacing: max. 1/2 yd
- Fabric: see table

closed-end zip (in inches)	0	2	4	6	8	10	12	14	16	18	20	22	24	26
length	20	20	20	20	20	20	20	20	22	22	22	22	22	22

fabric used (in yards) standard	0	2	4	6	8	10	12	14	16	18	20	22	24	26
fabric width 55"	3	3	3	3	3	3 ¾	3 ¾	3 ¾	4	4	4 ¼	4 ¼	4 ¼	4 ¼

The corresponding fabric layout can be found on the last page of these sewing instructions.

fabric advice




Leah works well in a variety of 'workwear' fabrics. Choose from a bottom-weight fabric like cotton, denim or corduroy.








This image shows a single sheet of white paper with horizontal blue ruling lines. The lines are evenly spaced and run across the width of the page. There are no margins, text, or other markings on the paper.

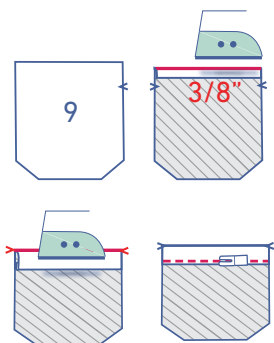
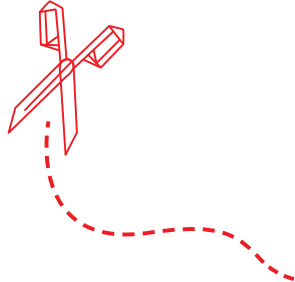
sewing instructions



The method used to finish the garment will depend on your chosen fabric. The pieces are always sewn together with right sides facing, unless stated otherwise.

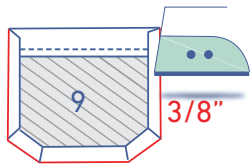


F	front	
B	back	
RF	right front	
LF	left front	
CF	centre front	
CB	centre back	
RBP	right back piece	
LBP	left back piece	
	right side	
	wrong side	
	iron-on interfacing	

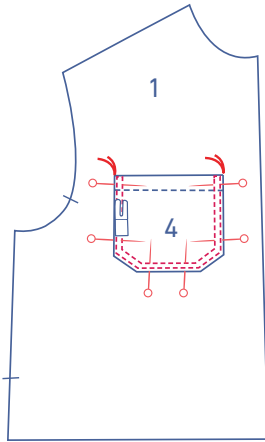


1

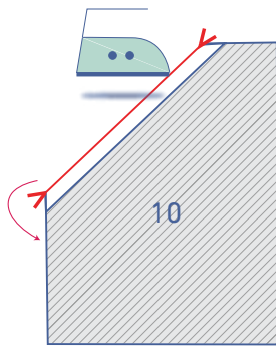
Press the top of the chest pocket (9) $\frac{3}{8}$ " over to the wrong side and press a second time, this time at the V notches. Sew into place right next to the edge.



Press the remaining edges $\frac{3}{8}$ " over to the wrong side.

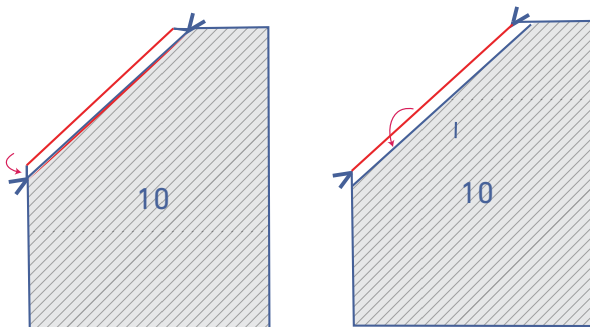
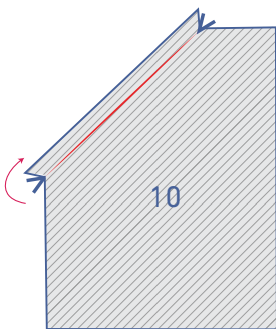


Pin the pocket to the front (1) at the indicated place. Sew into place right next to the edge. Topstitch next to the first line of stitching at presser foot width. Finish with horizontal reinforcement stitching between the two rows of topstitching.

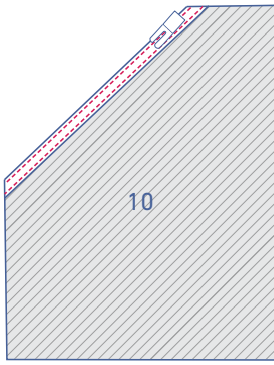


2

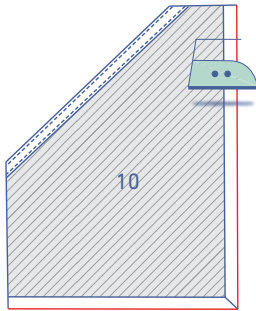
Press the top of the pocket (10) at the V notches over to the wrong side and open back out again.



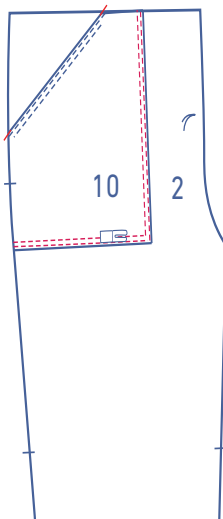
Fold the raw edge up to the pressed fold line and then fold again.



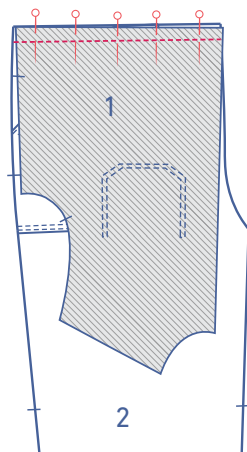
Sew into place right next to the edge. Topstitch next to the first line of stitching at presser foot width.



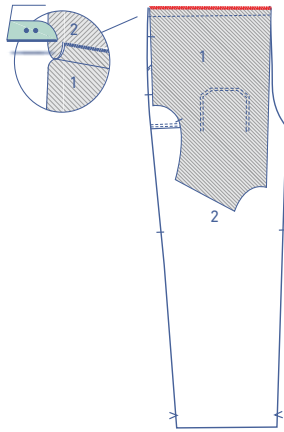
Press the marked edges $\frac{3}{8}$ " over to the wrong side.



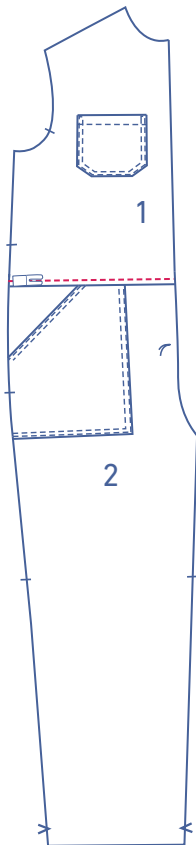
Pin the pocket to the trouser front piece (2) with the finished slanted edge of the pocket matching the nicks. Sew the sides indicated right next to the edge. Topstitch next to the first line of stitching at presser foot width.



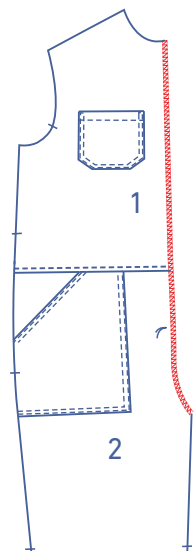
Pin and sew the front bodice to the front of the trousers.



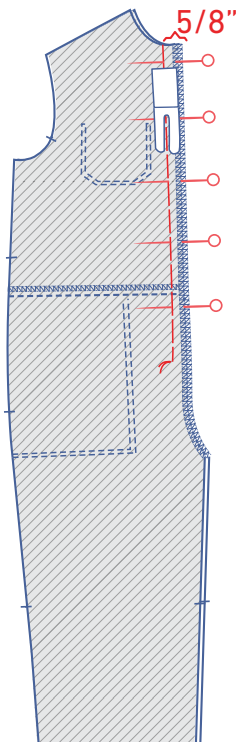
Finish the raw edges together with overlock stitching and press the seam towards the top.



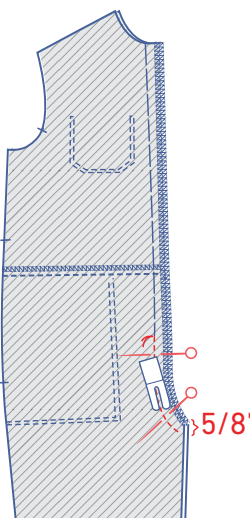
Now, topstitch the front bodice at presser foot width from the seam.



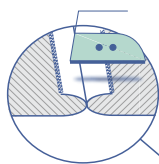
Finish the CF seams using an overlock stitch.



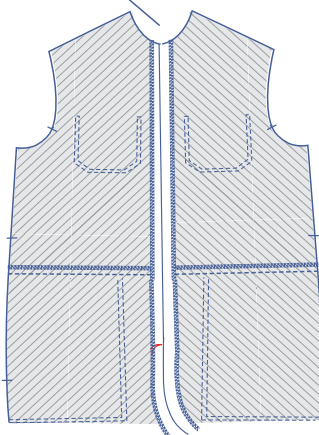
Pin the CF seams together. Make sure that the basting threads are matching. Sew from the top to the basting thread, $\frac{5}{8}$ " in from the edge, using a basting stitch length.

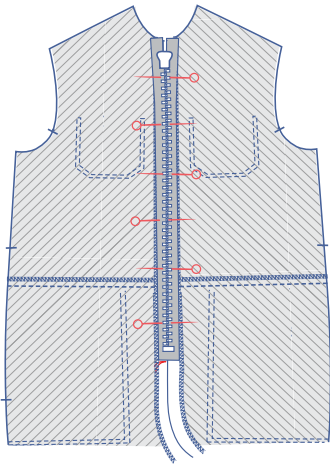


Pin the remainder of the CF seam together and sew with a regular stitch length.

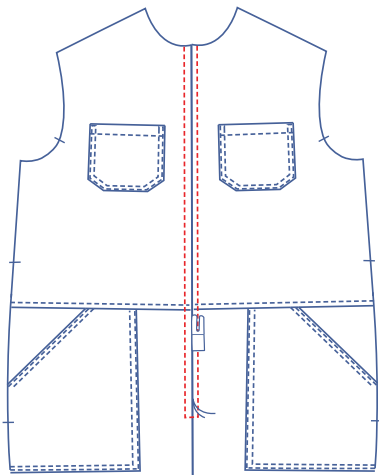


Press open the seam allowance.



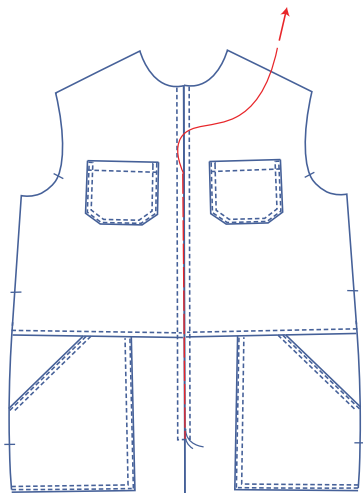


Place the zipper right side down with the middle of the zipper centred over the open seam allowance. Pin in place.

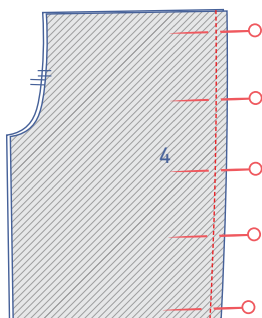


To attach the zipper, place the front right side facing up. Starting at the neckline, sew at presser foot width to just below the basting thread. Pivot the needle and sew across the bottom (you may need to move the zipper pull slightly), pivot again and sew back to the top at presser foot width.

If using a metal zip, be sure that you are past the bottom stop.

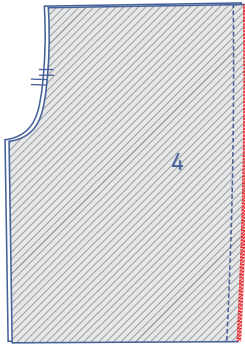


Remove the basting stitch from earlier.

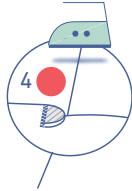


3

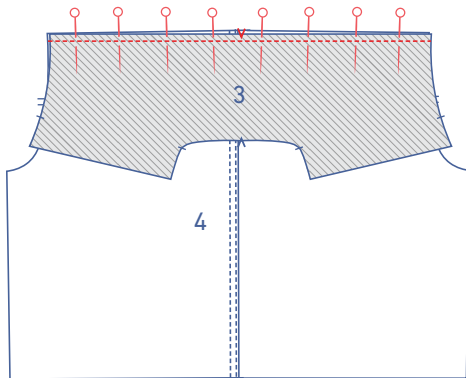
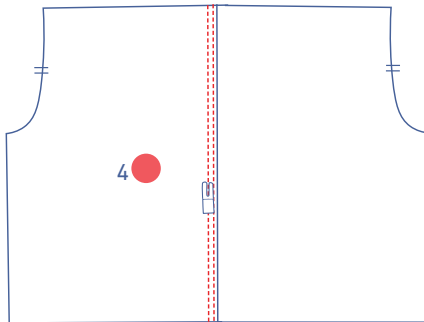
Pin and sew the CB seam of the back bodice (4) together.



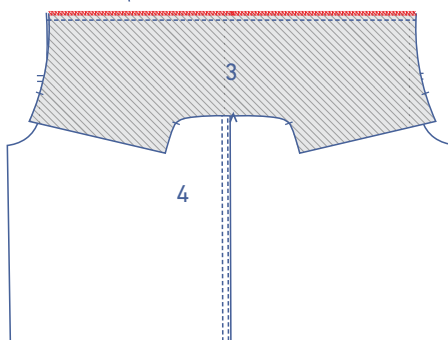
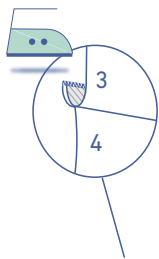
Finish the raw edges together with overlock stitching.



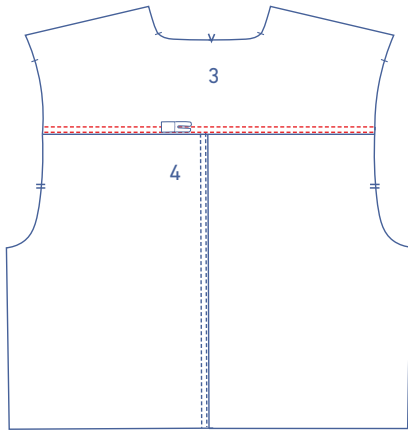
Press the seam allowance of the CB seam towards the RB. From the right side, sew two lines of topstitching on the LB next to the seam.



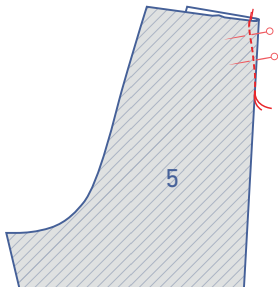
Pin and sew the yoke (3) and the top back together.



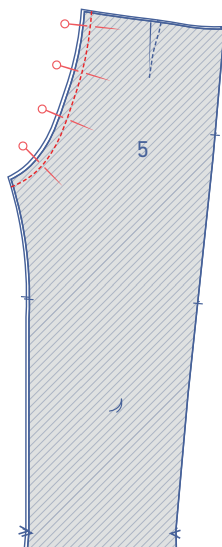
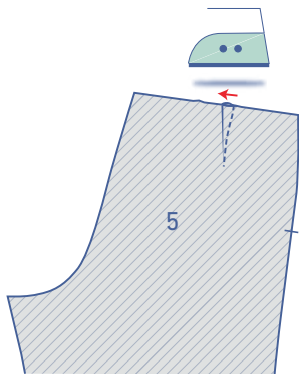
Finish the raw edges together with overlock stitching and press the seam allowance towards the yoke.



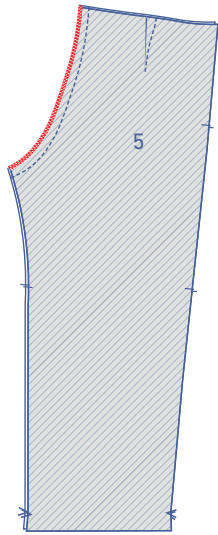
Sew two lines of topstitching on the yoke next to the seam.



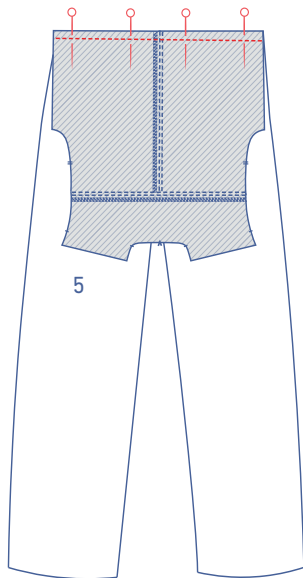
To create the darts, fold the trouser back piece (5) in half with right sides facing, matching the waistband nicks. Pin in place. Starting at the waistband, sew towards and past the basting thread, leaving a tail of thread to make a knot. Press the dart towards the CB.



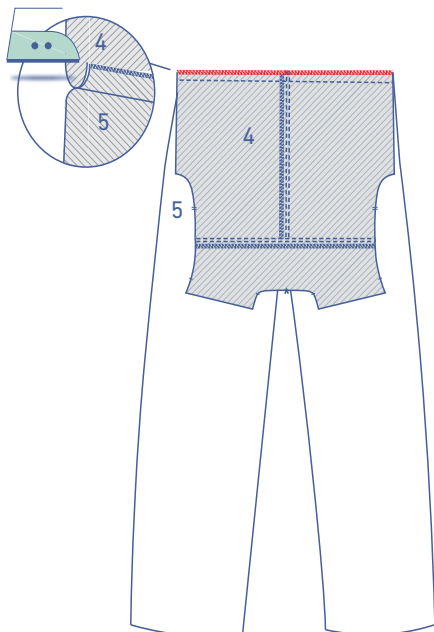
Pin and sew the CB seam of the trousers together.



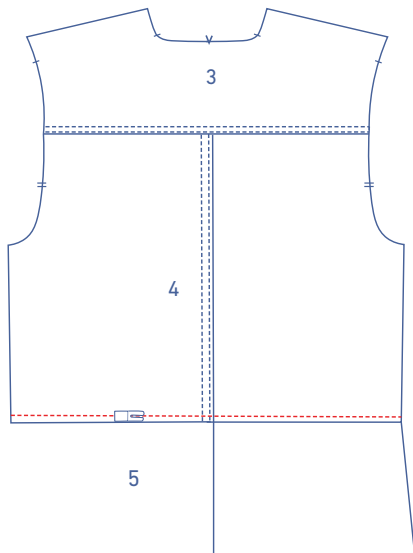
Finish the raw edges together with overlock stitching.



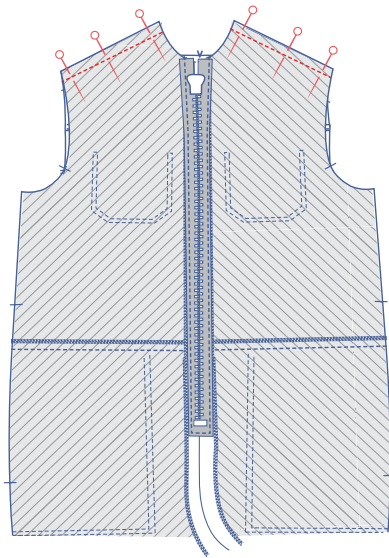
Pin and sew the bodice back to the back of the trousers.



Finish the raw edges together with overlock stitching and press the seam towards the top.

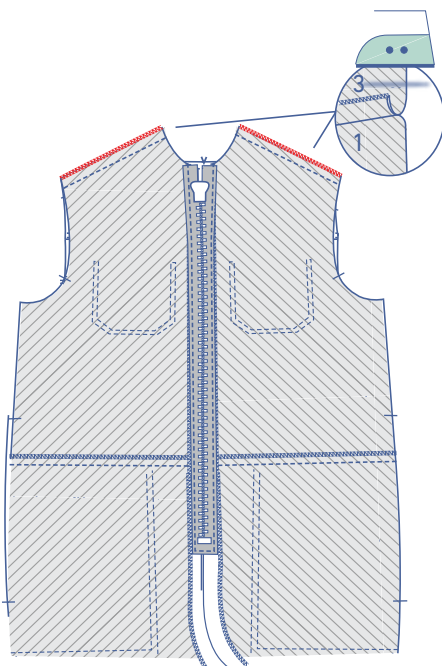


Sew two lines of topstitching on the back bodice at presser foot width.

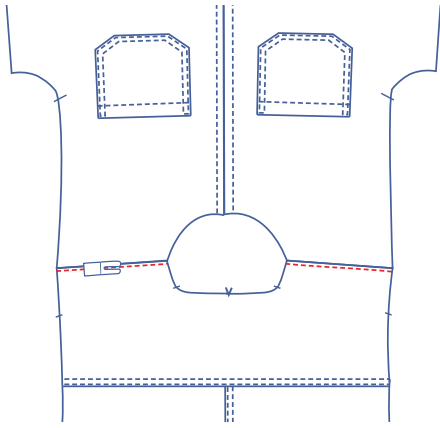


4

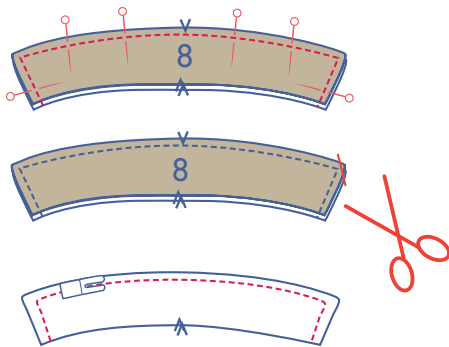
Pin and sew the shoulder seams together.



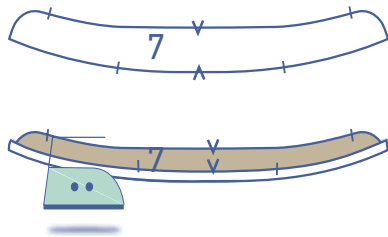
Finish the raw edges together with overlock stitching and press the seam allowance towards the yoke.



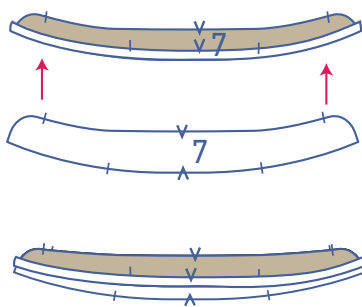
Topstitch the yoke right next to the seam with one line of stitching.



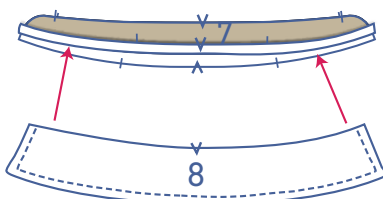
Pin and sew the edges of the collars (8) to each other, leaving the bottom free. Trim the seam allowance in the corners and turn the right way out. Topstitch at pressure foot width from the edge as shown in the illustration.



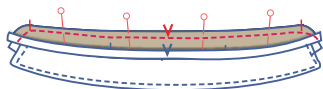
Take one of the two collar stands (7) and press $\frac{1}{2}$ cm over the the wrong side along the lower edge.



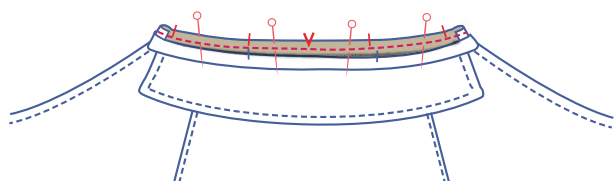
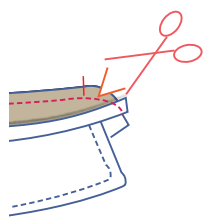
Place both collar stands with right sides facing; the collar stand with the pressed over bottom should be on top.



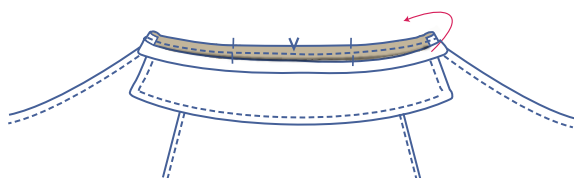
Slide the collar between the two collar stands and align the raw edges.



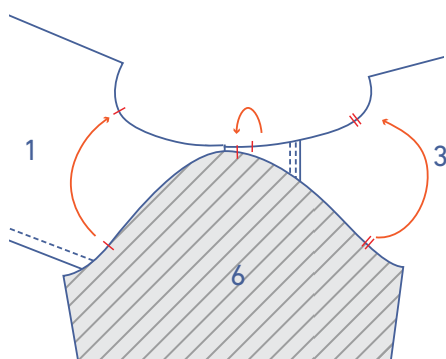
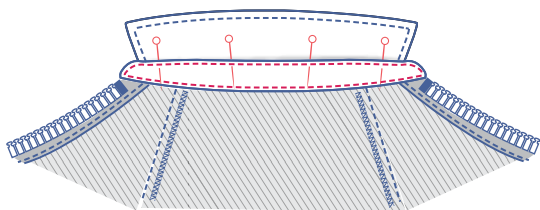
Pin and sew the pieces together. Grade and trim the seam allowance around the curves. Turn right side out.



Pin and sew the bottom of the collar stand that has not been pressed to the neckline along the right side of the jumpsuit.

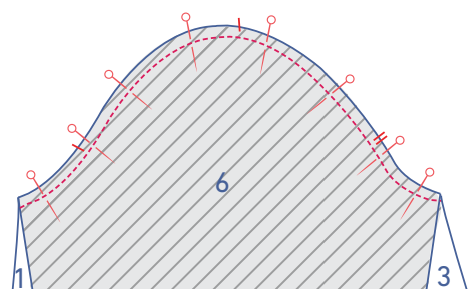


Fold the collar stand with the bottom that has been pressed over to the wrong side of the jumpsuit neckline. The fold line should lie precisely over the previous row of stitching. Pin and sew into place. Finish stitching the remainder of the collar stand.

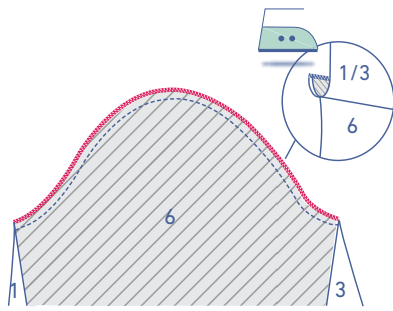


5

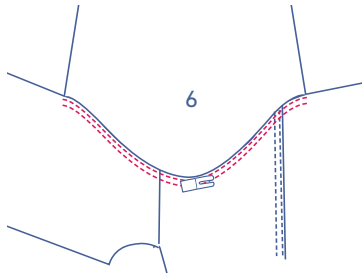
Pin and sew the sleeve cap (6) to the armhole, with the corresponding nicks matching. The single nick marks the front, the double nicks mark the back, and the top single nick matches the nick on the yoke indicating the true shoulder. Distribute the fabric evenly between the markings.



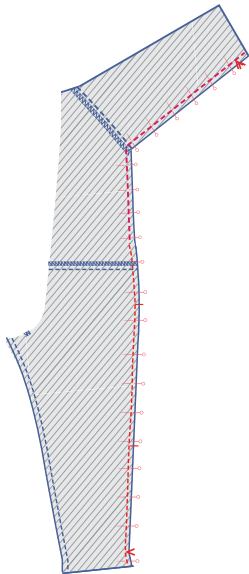
Sew into place.



Finish the raw edges together with overlock stitching.

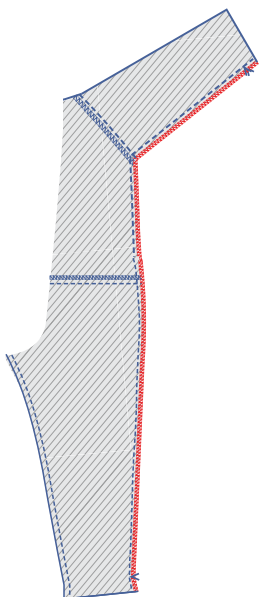


Press seam allowance towards the garment. Sew two rows of topstitching on the main piece right next to the seam.

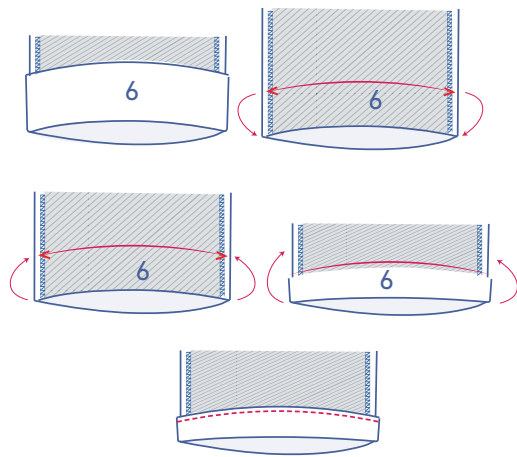


6

Fold the sleeve in half with right sides facing. Next, pin and sew the underarm and side seams.



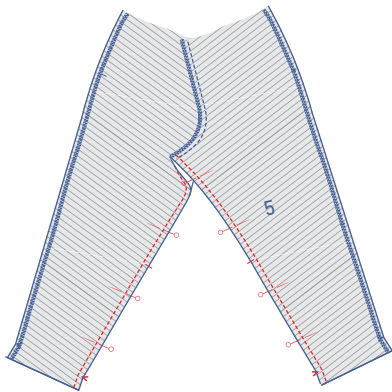
Finish the raw edges together with overlock stitching.



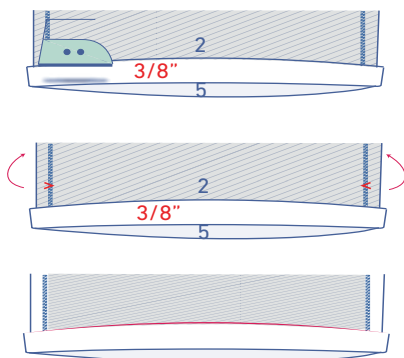
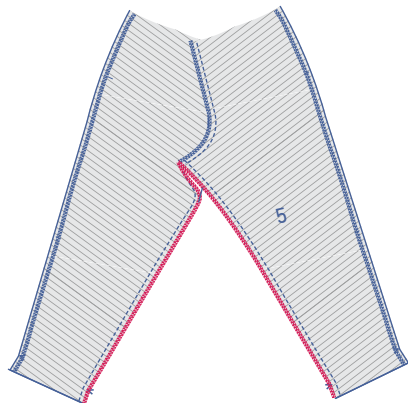
Press the sleeve's seam allowance over at the V notches and fold back down again. Fold the raw edge up to the pressed fold line and then fold again. Sew into place right next to the edge.

7

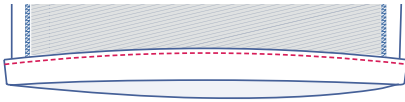
Pin and sew the inseams.



Finish the raw edges together with overlock stitching.



Press the hem $\frac{3}{8}$ " over to the wrong side and press a second time, this time at the V notches.



Sew into place right next to the edge.

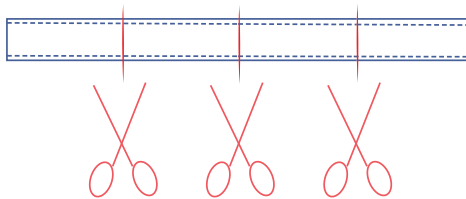


8

Fold the belt loops (11) in half lengthwise with the right side of the fabric facing inwards. Sew the long edge together.



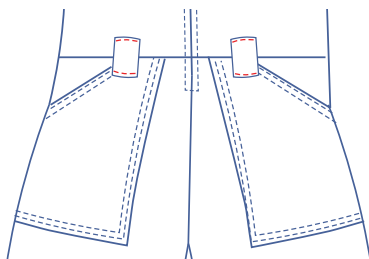
Turn the right way out and topstitch at $\frac{1}{8}$ " from the edge of both long sides.



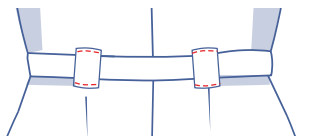
Cut the strip for the belt loops into 4 equal parts.



Fold each of the tops and bottoms $\frac{3}{8}$ " over and press.



Pin the belt loops to the jumpsuit at the following places:
 - On the front on either side, just next to the finished slanted edge of the patch pocket.
 - On the back on either side, over the dart. Sew into place along the short ends at $\frac{1}{8}$ " in from the edge.



9

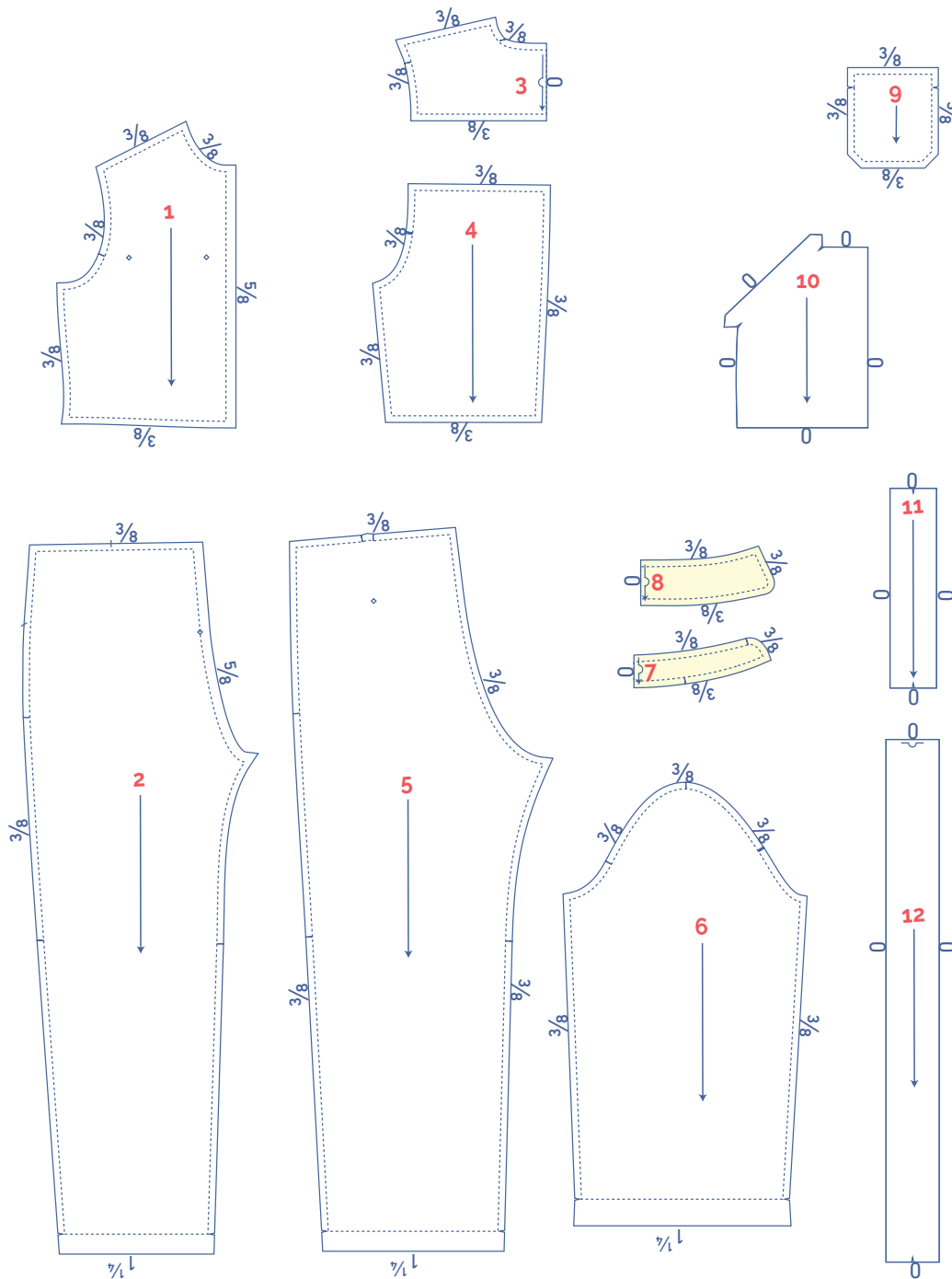
Fold the belt (12) in half lengthwise with the right side of the fabric facing inwards. Sew the indicated sides and leave an opening to turn the belt the right way out again.



Turn the belt right side out. Sew all the way around at $\frac{1}{8}$ " from the edge.

pattern pieces & seam allowances (in inches)

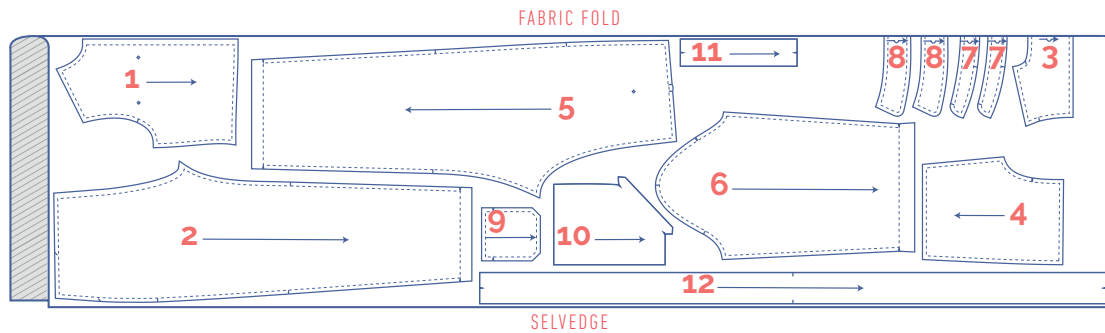
To sew the garment together as described in the instructions, you must draw the illustrated seam allowances around the paper pattern pieces before cutting them out.



1. top front piece: 2x
2. trouser front: 2x
3. yoke: 1x on fabric fold
4. top back piece: 2x
5. trouser back: 2x
6. sleeve: 2x
7. collar stand: 2x on fabric fold
8. collar: 2x on fabric fold
9. chest pocket: 2x
10. pocket: 2x
11. belt loops: 1x You will need to draw this pattern piece yourself. Draw a 11.8x2.75" rectangle.
12. belt: 1x on fabric fold You'll need to draw this pattern piece yourself. Draw a 4x31.5" (sz. 32-36), 4x35.5" (sz. 38-42), 4x37.8" (sz. 44-46), 4x43.3" (sz. 48-50), 4x55.1" (sz. 52-58) rectangle.

fabric layout for fabrics 55" wide

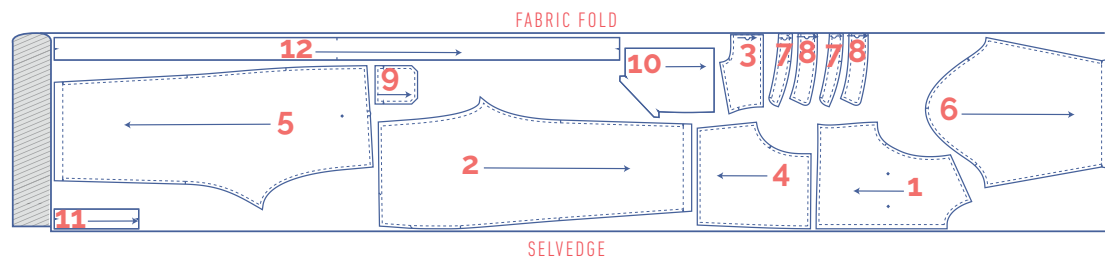
0 - 8



IMPORTANT

You only need pattern pieces 11 and 12 once.

10 - 26



IMPORTANT

You only need pattern pieces 11 and 12 once.

- Mark the next points with basting thread:



- Nick the pattern paper and fabric at the places where a single vertical line (I) and double vertical lines (II) are indicated.
- Cut a small corner out of the fabric at a V notch symbol or on the finished hemline.
- Cut a small corner (V notch) out of the pieces that lie on the fabric fold (—) to mark the middle of these pieces.