

Jackie by Fibre ⚡ood

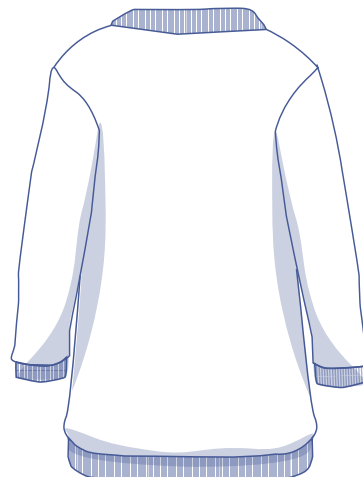
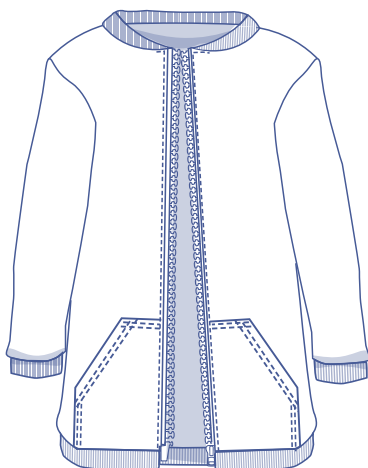
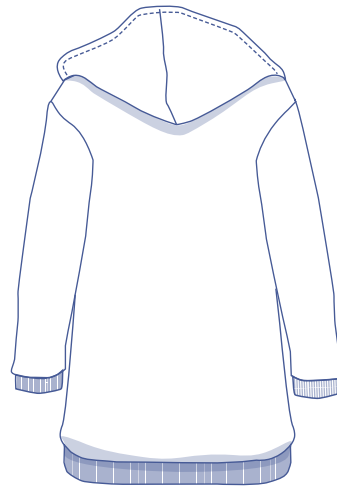
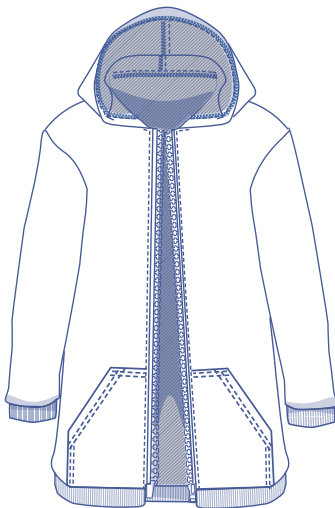


Jackie by Fibre ⚡ood



2 - 14 years

Hoodie lovers: anyone who's made the Hazel hoodie can testify to it's cuddle-factor. Which is why we've created the mini-me version for the kids: the Jackie hoodie. From cropped to full length, it's a snap to alter this pattern and super versatile too; make Jackie with a collar in binding fabric and it transforms into a bomber jacket. Sew it up in sweatshirting or jersey in prints or solid colours. How about a zebra stripe?



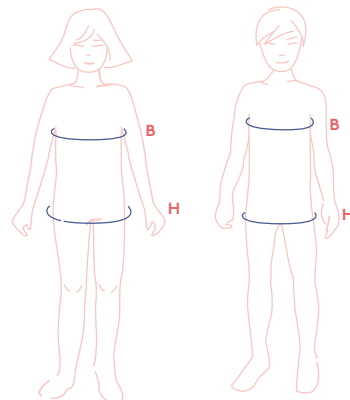
size chart

size (age)	2	3	4	5	6	8	10	12	14
B (inches)	20.5	21.3	22	22.8	23.6	25.2	26.8	28.3	29.9
H (inches)	22	22.8	23.6	24.4	25.2	26.8	28.3	29.9	31.5

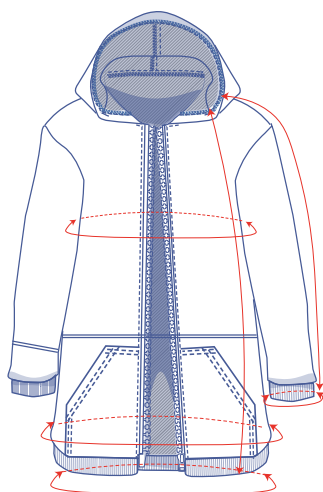
Bust (B): measure horizontally around the fullest part of the bust.

Hips (H): measure horizontally around the widest part of the lower body.

To select the right size for this pattern, the chest measurement should be your guideline. Pick the size that is the best match for the chest measurement.



finished garment measurements (in inches)



This chart's measurements are based on the fabric type and serve as a reference. Ease has been added to the width measurements (on top of the exact body measurements) for a more comfortable fit and to achieve a particular cut (fitted, loose or oversized). Depending on the preferred fit, you could size up or down accordingly.

size	2	3	4	5	6	8	10	12	14
length	21	21	23	23	25	26.75	28.75	30.75	32.75
sleeve length*	15.25	17	18	19.25	20	21.75	23.50	25.50	27.25
bust	26.50	27.25	28.25	29	29.75	31.25	32.75	34.50	36
circumference over the hem band	32.75	33.50	34.25	35.25	36	37.50	39	40.75	42.25
hem band circumference	22.75	23.25	23.75	24.50	25	26	27.25	28.25	29.25
wrist trim circumference	6	6	6.25	6.25	6.50	6.75	7	7.50	7.75

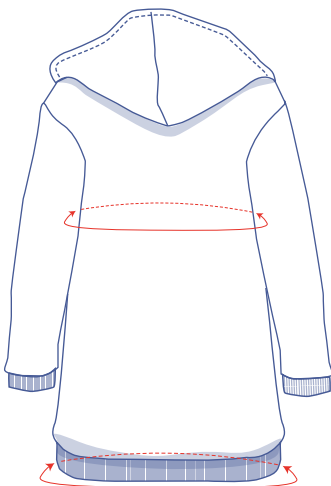
* Including the shoulder length and wrist trim.

Compare the stated lengths to the measured or desired lengths. **Lengthen** or **shorten** the jacket and/or sleeves by cutting the pattern pieces at the place(s) indicated by a double line on the drawing above and then spreading the pattern pieces out X inches from each other or overlapping them where necessary. Make sure that the CF and CB lines and the side seams are always straight.

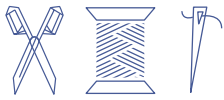


IMPORTANT

Adjust the fabric to be used based on these alterations.



supplies



- Thread
- Open-end zip: see table
- Cuff fabric (14" wide): see table
- Fabric: see table

open-end zip (in inches)	2	3	4	5	6	8	10	12	14
length	18	18	20	20	22	24	26	28	30

cuff fabric (in yards)	2	3	4	5	6	8	10	12	14
collar version	$\frac{1}{2}$	$\frac{1}{2}$	$\frac{1}{2}$	$\frac{1}{2}$	$\frac{1}{2}$	$\frac{3}{4}$	$\frac{3}{4}$	$\frac{3}{4}$	$\frac{3}{4}$
hoodie version	$\frac{1}{2}$	$\frac{1}{2}$	$\frac{1}{2}$	$\frac{1}{2}$	$\frac{1}{2}$	$\frac{1}{2}$	$\frac{1}{2}$	$\frac{1}{2}$	$\frac{1}{2}$

fabric used (in yards) standard	2	3	4	5	6	8	10	12	14
fabric width 55"	1	1	1	1	1	$1\frac{1}{4}$	$1\frac{1}{4}$	$1\frac{1}{2}$	$1\frac{3}{4}$

The corresponding fabric plan can be found on the last page of these sewing instructions.

fabric advice



Make the Jackie hoodie in a sweatshirt fabric, French terry or Ponte knit. You could also go for a jacquard jersey or a heavy textured knit. For the collar (optional), wrist and hem bands, choose a fabric that will maintain stretch like a sweatshirt ribbing. If using 100% cotton, pre-wash the fabric to allow for shrinkage!

sewing instructions



The method used to finish the garment will depend on your chosen fabric. The pieces are always sewn together with right sides facing, unless stated otherwise.

F front

B back

RF right front

LF left front

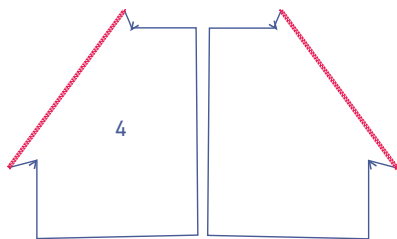
CF centre front

CB centre back

 right side

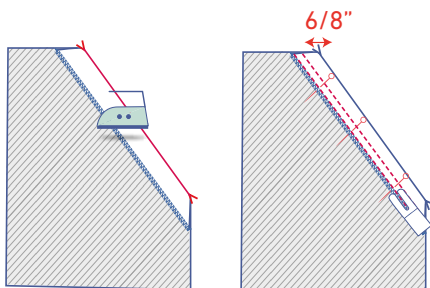
 wrong side

 cuff fabric

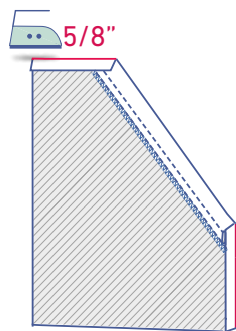


1

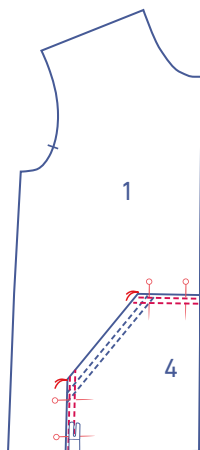
Finish the slanted sides of the pocket pieces (4) with overlock stitching.



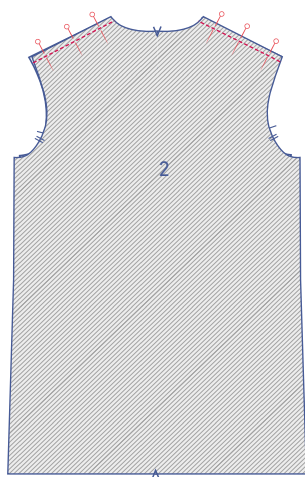
Press the slanted side at the V notches onto the wrong side and sew into place with two rows of top-stitching: the first row should be $\frac{6}{8}$ " away from the folded edge and the second should be at presser foot width from the first.



Press the indicated edges $\frac{5}{8}$ " cm onto the wrong side.

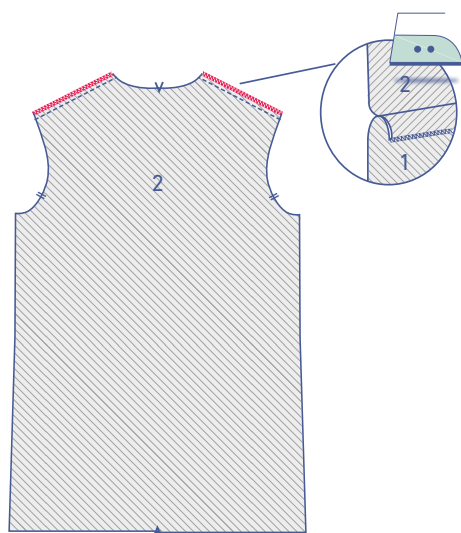


Pin the pocket to the front (1) at the designated place. Sew the pocket in place with two rows of top-stitching: the first row of stitching should be $\frac{1}{8}$ " from the edge and the second at presser foot width from the first row.



2

Pin and sew the shoulder seams of the front and back (2).



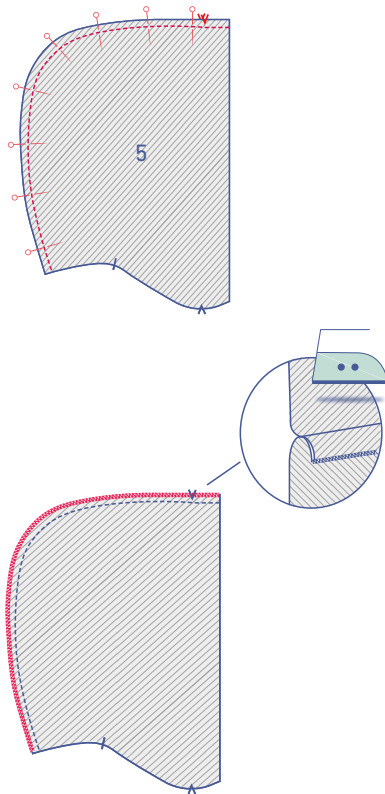
Finish the raw edges together with overlock stitching and press the seam to the front.

3

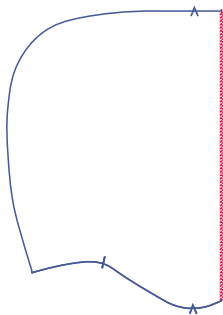
There are two options to finish with, a hood or a collar.

- **with hood**

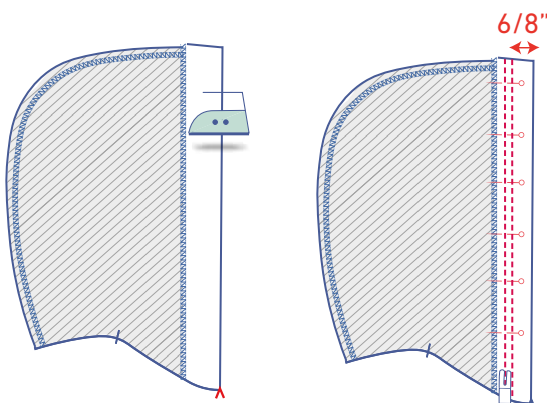
Pin and sew the curved edges of both hood pieces (5) together.



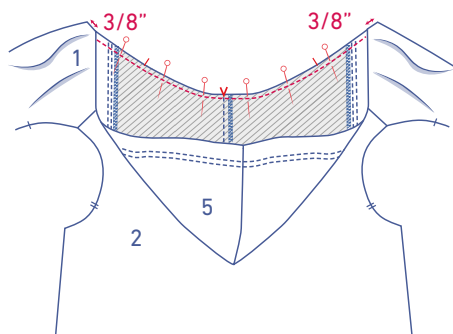
Finish the raw edges together with overlock stitching. Press the seam allowance to one side.



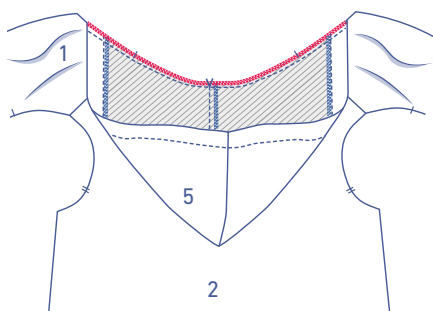
Finish the straight raw edge with overlock stitching.



Press the front overlocked edge to the wrong side of the hood at the V notches and sew into place with two rows of top stitching: the first row should be $\frac{6}{8}$ " away from the folded edge and the second at presser foot width from the first.

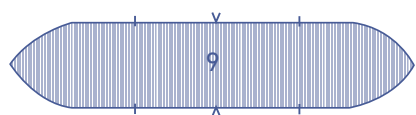


Pin and sew the hood to the neckline. The folded outer edges of the hood should sit $\frac{3}{8}$ " in from the CF. The hood centre seam aligns with the CB and the hood's nicks with the shoulder seams.

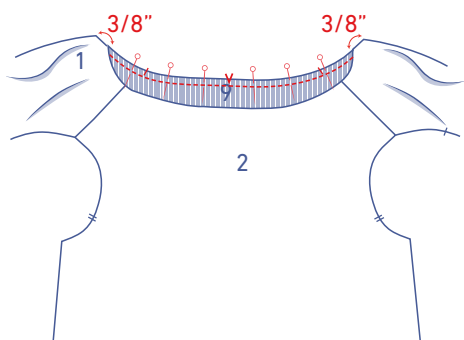
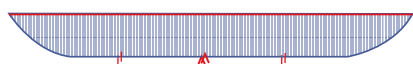


Finish the raw edges together with overlock stitching.

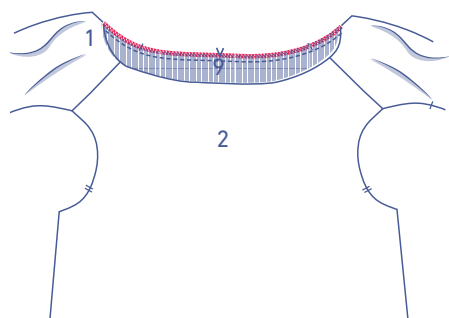
● with collar



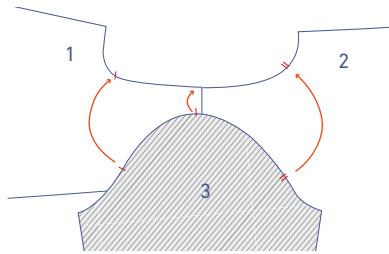
Press the collar (9) in half lengthwise with the right side of the fabric facing outwards.



Pin and sew both raw edges of the collar to the neckline, with corresponding nicks matching.

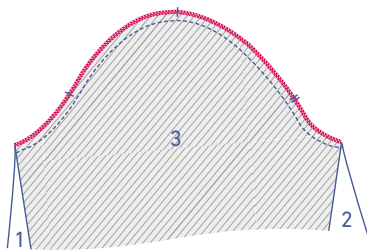
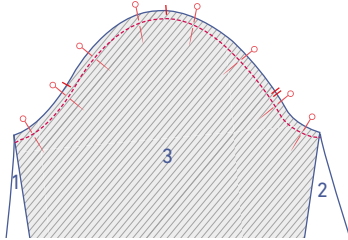


Finish the raw edges together with overlock stitching.



4

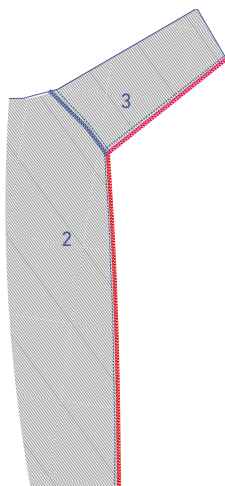
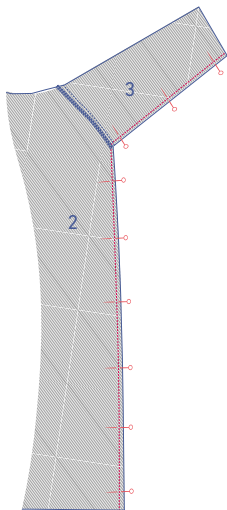
Pin and sew the top of the sleeve (3)(= the sleeve cap) to the armhole with the corresponding markings matching exactly. The single nick marks the front, while the double nicks mark the back. The upper-most nick should be aligned with the shoulder seam.



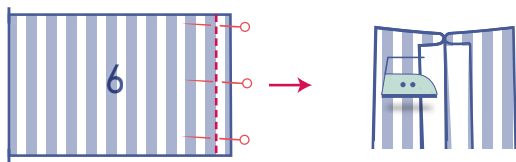
Finish the raw edges together with overlock stitching.

5

Pin and sew the side and underarm seams of the front and back.

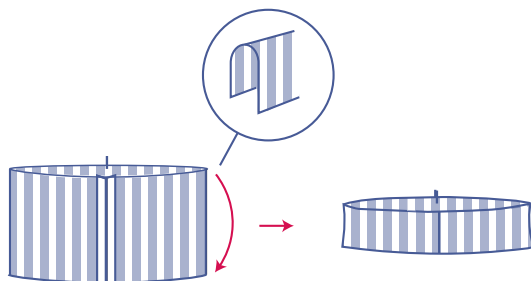


Finish the raw edges together with overlock stitching.

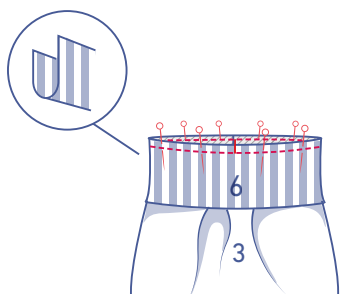


6

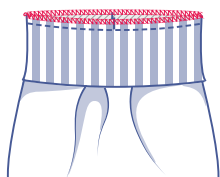
Sew the short ends of the wrist trim (6) and press the seam open.



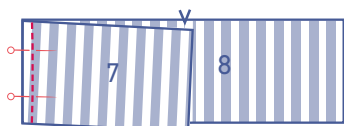
Press the wrist trim in half lengthwise with the right side facing outwards.



Pin and sew both raw edges of the wrist trim to the bottom of the sleeve. Make sure that the seams and nicks continue to match. The circumference of the wrist trim is smaller than the sleeve hem, so stretch the wrist trim to match the sleeve hem.



Finish the raw edges together with overlock stitching.



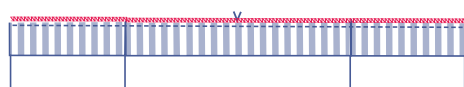
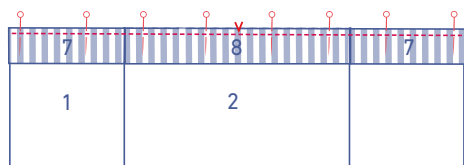
Pin and sew the side seams of the hem band front (7) and hem band back (8).



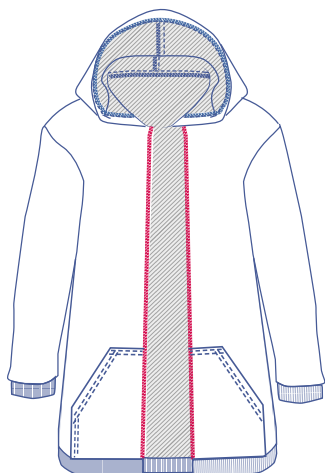
Press open the seams.



Fold the hem bands in half lengthwise with the right side of the fabric facing outwards and press.

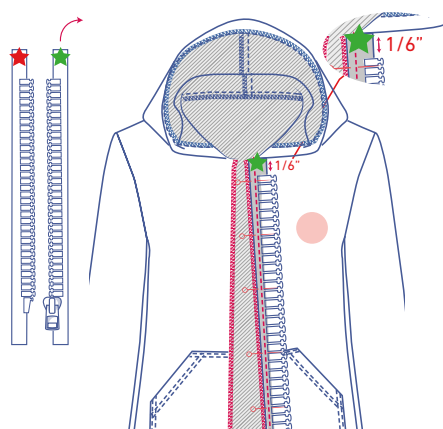


With raw edges together, pin and sew the hem bands to the bottom of the main piece, making sure that the seams align and markings match. The circumference of the hem band is smaller than the circumference of the piece, so stretch the hem band to the bottom of the piece.



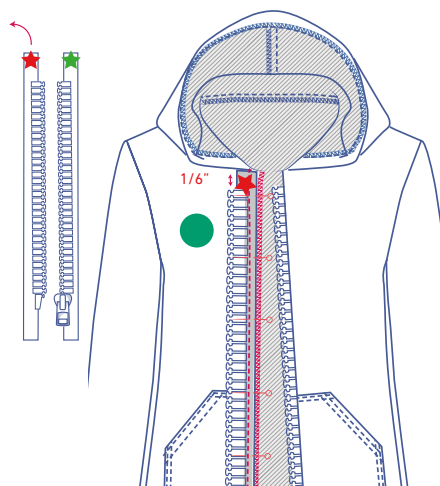
7

Finish the CF seam with overlock stitching.



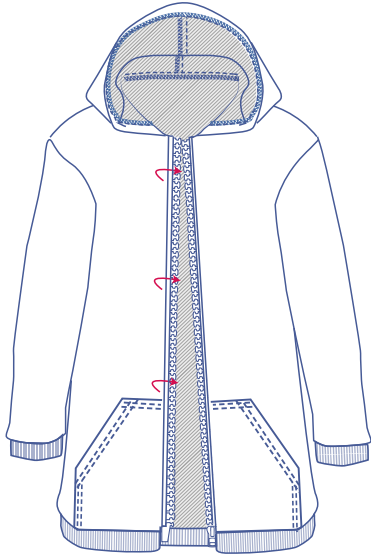
First lay the zip with the right side facing up. Turn the right side of the zip tape marked with a small green star over to face down on the LF.

Pin the zip tape in place with the edge next to the overlock stitch. The zip teeth should sit $\frac{1}{6}$ " below the neck seam. Sew in place at $\frac{3}{8}$ " from the CF seam (= down the middle of the zip tape).

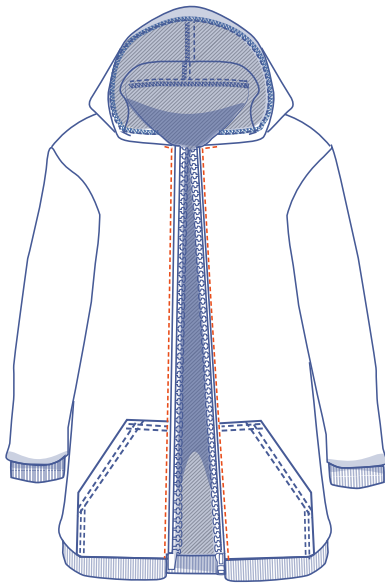


Flip the zip tape back over with the right side facing up and the zip teeth faced towards the CF.

Turn the right side of the zip tape marked with a small green star over to face down on the LF. Sew in place the same way you did with the other zip tape.



Flip the zip tape back over with the right side facing up and the zip teeth faced towards the CF.



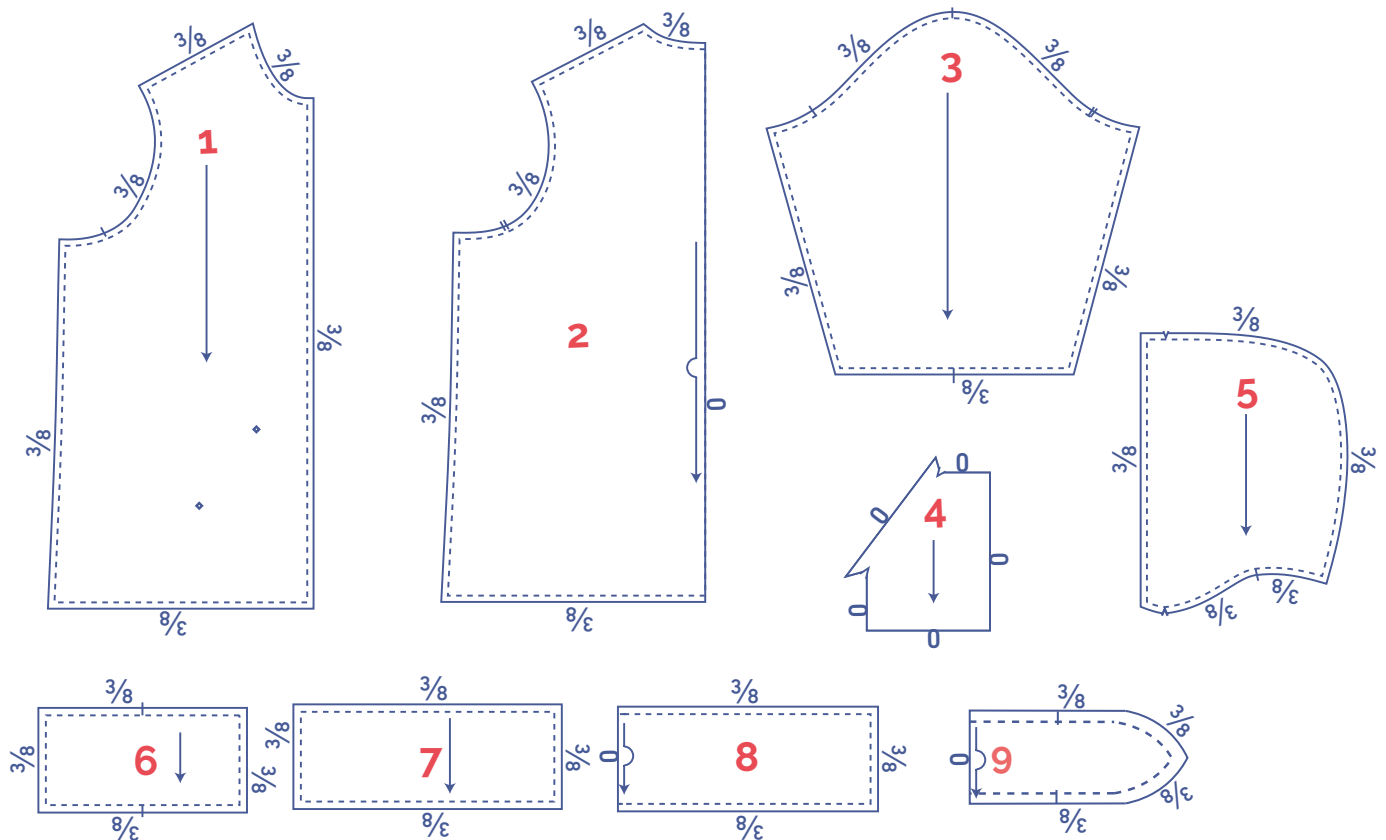
Topstitch at presser foot width from the CF seam and across the zip tape at the neckline using a narrow presser foot. This will keep the zip tape secured.

pattern pieces & seam allowances (in inches)

To sew the garment together as described in the instructions, you must draw the illustrated seam allowances around the paper pattern pieces before cutting them out.

1. front: 2x
2. back: 1x on fabric fold
3. sleeve: 2x
4. pocket: 2x
5. hood*: 2x
6. wrist trim: 2x (in cuff fabric)
7. hem band front: 2x (in cuff fabric)
8. hem band back: 1x on the fabric fold (in cuff fabric)
9. collar*: 1x on the fabric fold (in cuff fabric)

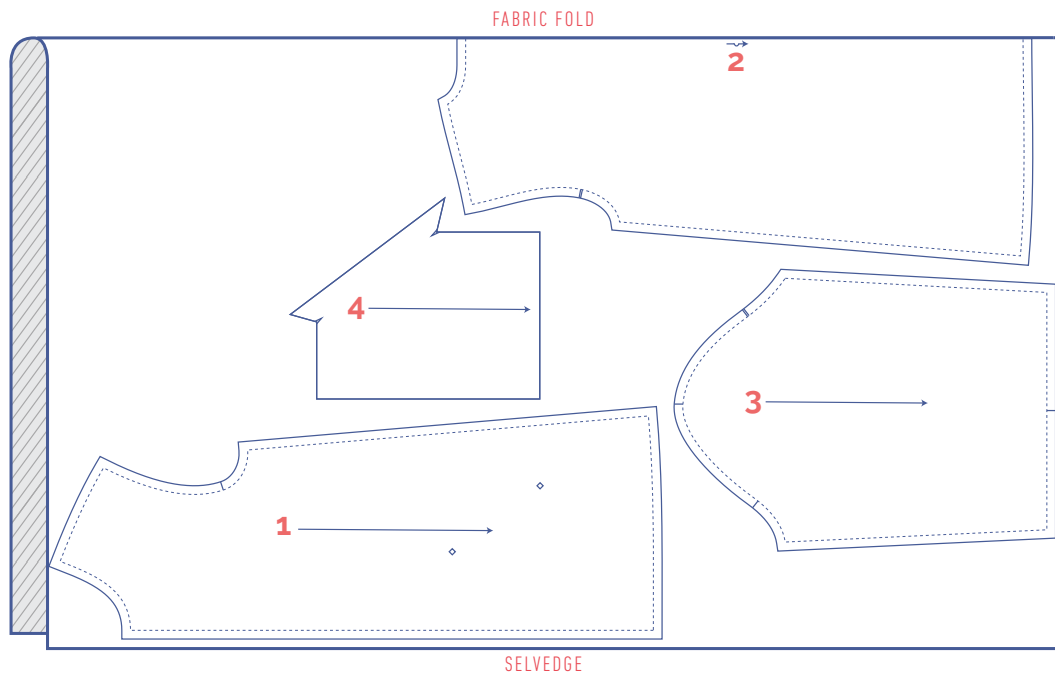
* Depending on the selected version (hood/collar) you will use pattern piece 5 (hood) or pattern piece 9 (collar).



fabric plan with collar

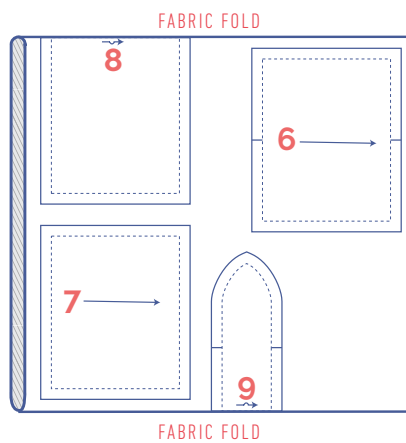
fabric 55" wide

2 - 14

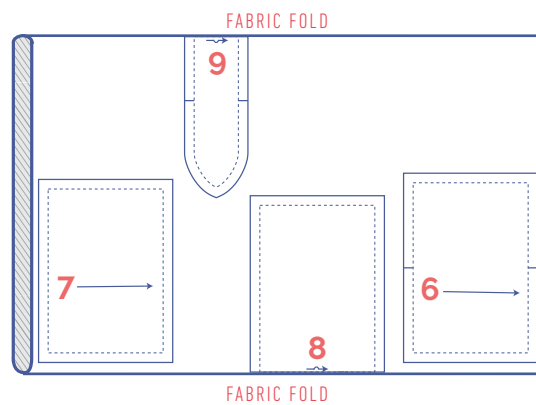


cuff fabric (knit 14" in the round)

2



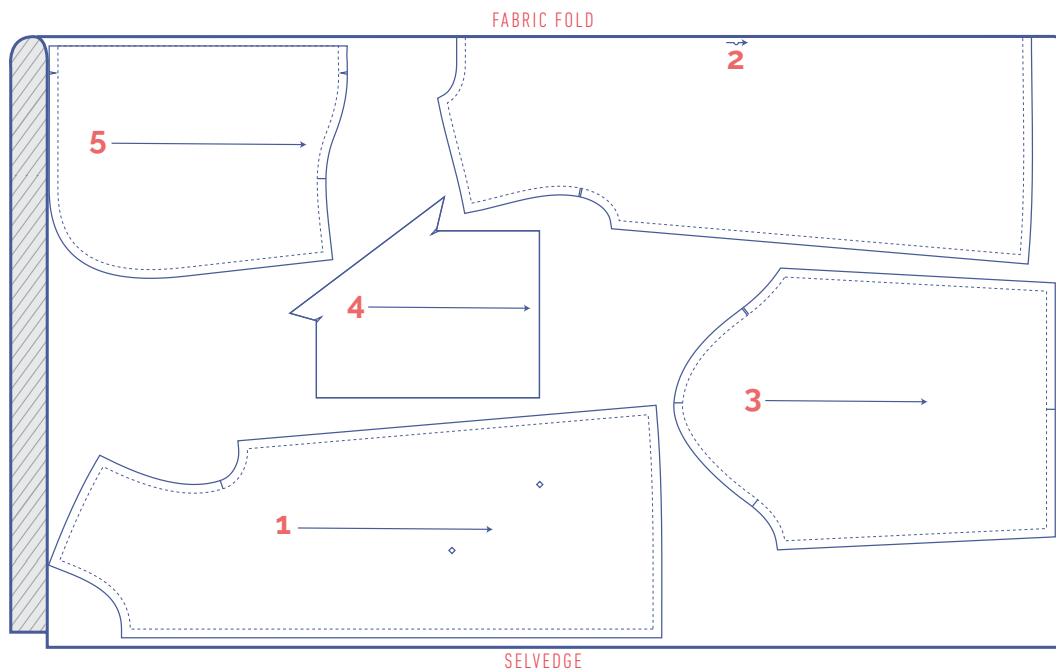
3 - 14



fabric plan for Jackie with hood

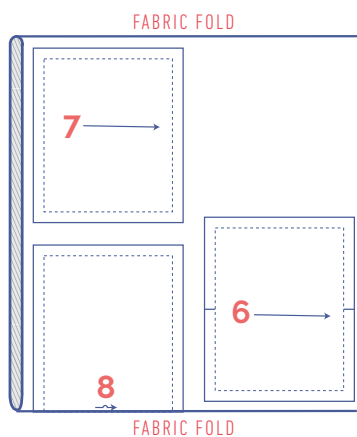
fabric 55" wide

2 - 14

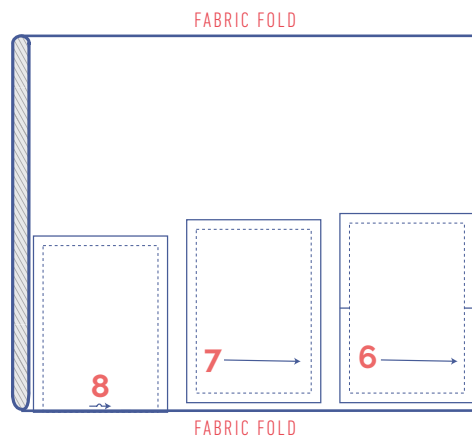


cuff fabric (knit 14" in the round)

2



3 - 14



marking pattern pieces after cutting

- Mark the following points using basting thread:



- Nick the pattern paper and fabric at the places where a single vertical line (I) and double vertical lines (II) are indicated.
- Cut a small corner out of the fabric at a V notch symbol or on the finished hemline.
- Cut a small corner (V notch) out of the pieces that lie on the fabric fold (—) to mark the middle of these pieces.