

# Indigo by Fibre ⚡ood

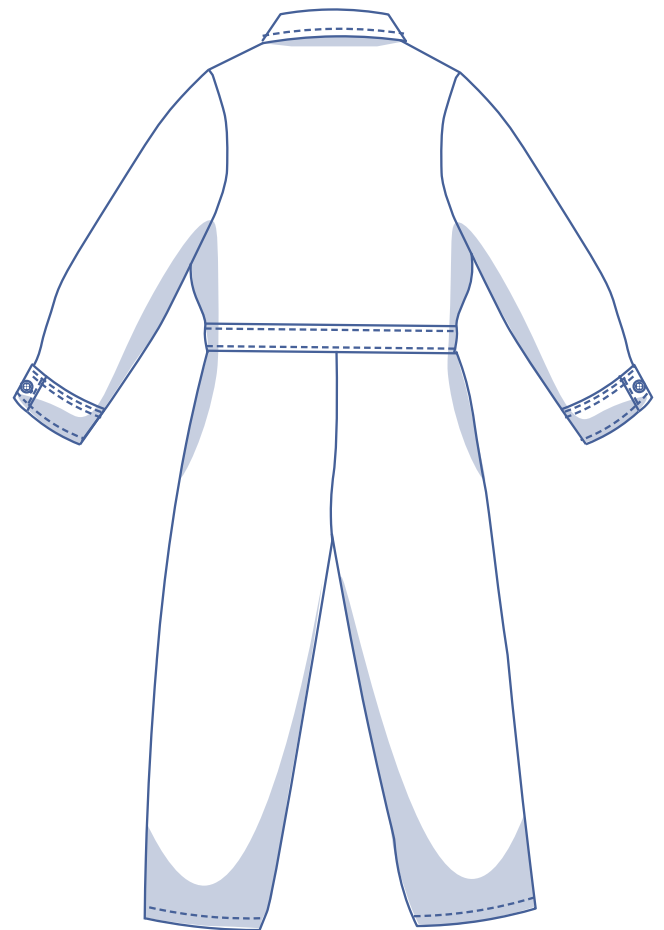
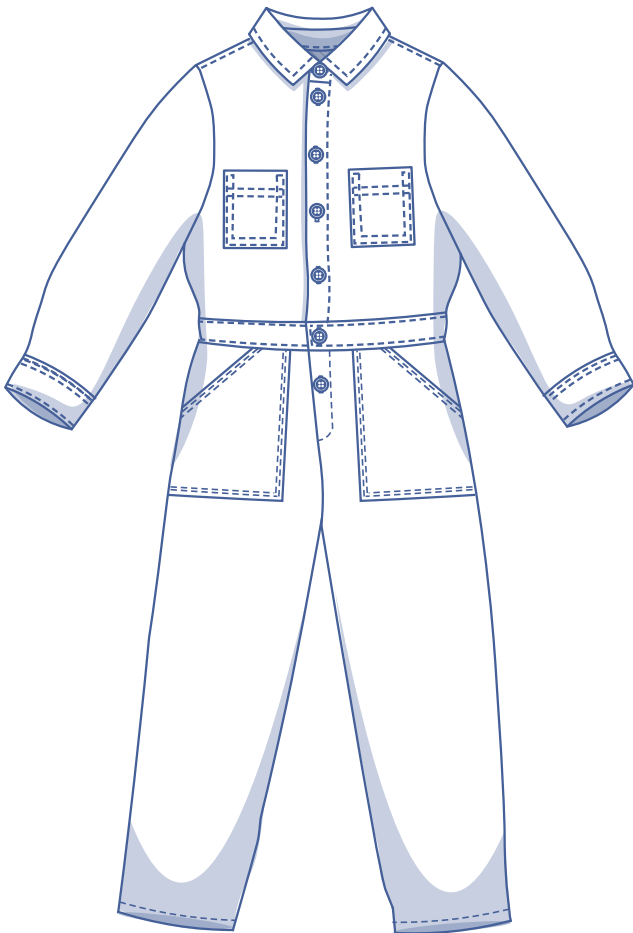


# Indigo by Fibre Mood



2 - 14 years

Matchy-matchy! The girls' Indigo jumpsuit is a sweet mini-me version of the Carmella boiler suit. On trend and capable of handling a jaunt through the woods, Indigo is pretty and practical. It features a collar and a button front closure. Make it up in a fun and trendy Gingham!



## size chart

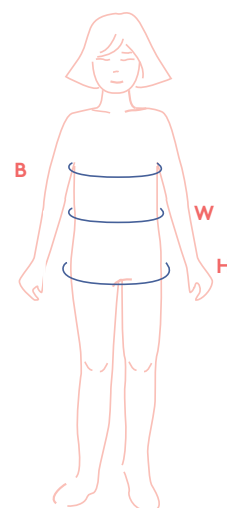
size (age)	2	3	4	5	6	8	10	12	14
B (inches)	20.5	21.3	22	22.8	23.6	25.2	26.8	28.3	29.9
W (inches)	19.7	20.5	20.9	21.3	21.7	22.4	23.6	24.4	26
H (inches)	22	22.8	23.6	24.4	25.2	26.8	28.3	29.9	31.5

**Bust (B):** measure horizontally around the fullest part of the bust.

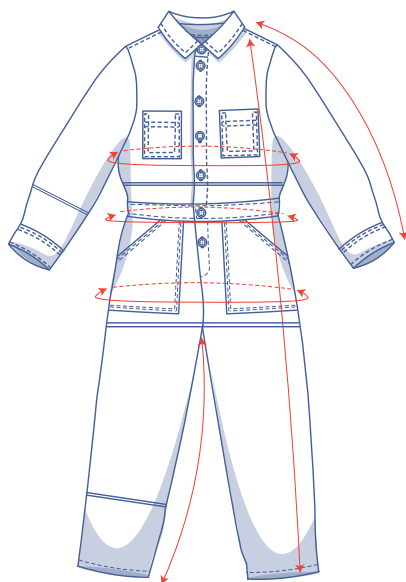
**Waist (W):** measure horizontally around the widest part of the waist.

**Hips (H):** measure horizontally around the widest part of the lower body.

To select the right size for this pattern, the bust measurement should be your guideline. Pick the size that best matches the chest. Altering the hips is easy. When you are tracing the waist, simply merge from one size to the other between the waist and hips.



## finished garment measurements (in inches)



This chart's measurements are based on the fabric type and serve as a reference. Ease has been added to the width measurements (on top of the exact body measurements) for a more comfortable fit and to achieve a particular cut (fitted, loose or oversized). Depending on how you want the garment to fit, you can size up or down accordingly.

size	2	3	4	5	6	8	10	12	14
length	31	33.50	36	38.25	40.25	44.50	49.50	54.50	59.50
sleeve length*	15.50	17.25	18.50	19.50	20.25	22	23.75	25.75	27.75
inseam length	11	12.50	14.25	15.75	17.50	19.75	23	26.25	29.25
bust	26.75	27.75	28.50	29.25	30	31.50	33.25	34.75	36.25
Waist	27.25	28.25	29	29.75	30.50	32	33.75	35.25	36.75
hips	29.50	30.50	31.25	32.25	33.25	35	36.25	38	40

\* Including the shoulder length and wrist trim.

Compare the stated lengths to the measured or desired lengths. **Lengthen** or **shorten** the body, trousers, rise and/or sleeves by cutting the pattern pieces at the place(s) indicated by a double line on the drawing above and then spreading the pattern pieces out X inches from each other or overlapping them, where necessary. Make sure that the CF and CB lines and the side seams are always straight.

### IMPORTANT

Adjust the fabric amount based on these alterations.



## supplies



- Thread
- Iron-on interfacing: max. 1/2 yd
- Buttons (Ø 3/8"): 8 (sz. 2-8y), 9 (sz. 10-14y)
- Fabric: see table

fabric used (in yards) standard	2	3	4	5	6	8	10	12	14
fabric width 55"	1 1/4	1 1/2	1 1/2	1 1/2	1 1/2	2	2 1/4	2 1/4	2 1/2

The corresponding fabric plan can be found on the last page of these sewing instructions.

## fabric advice






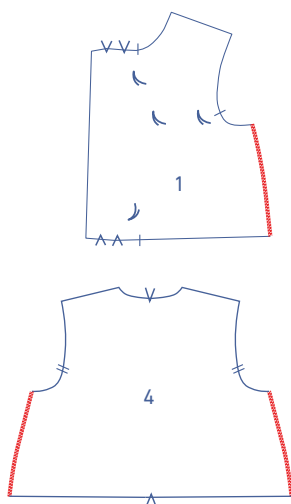
Go for a rough & tumble fabric, cotton, for example (stretch or no stretch), or viscose, wool, denim, etc.

# sewing instructions



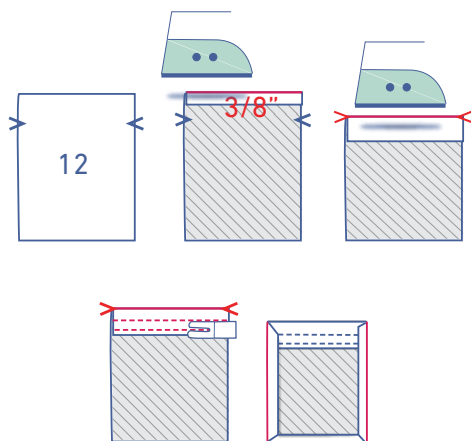
The method used to hem the garment will depend on your chosen fabric. The pieces are always sewn together with right sides facing, unless stated otherwise.

F	front	
B	back	
RF	right front	●
LF	left front	●
CF	centre front	
CB	centre back	
RBP	right back piece	●
LBP	left back piece	●
	right side	
	wrong side	
	iron-on interfacing	



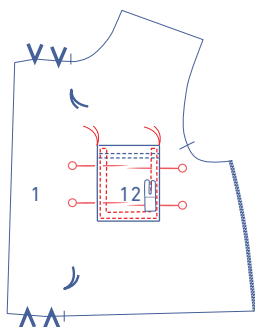
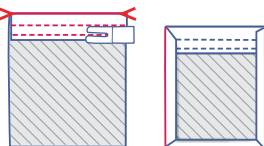
## 1

Finish the side seams of the top front (1) and the top back (4) with overlock stitching.

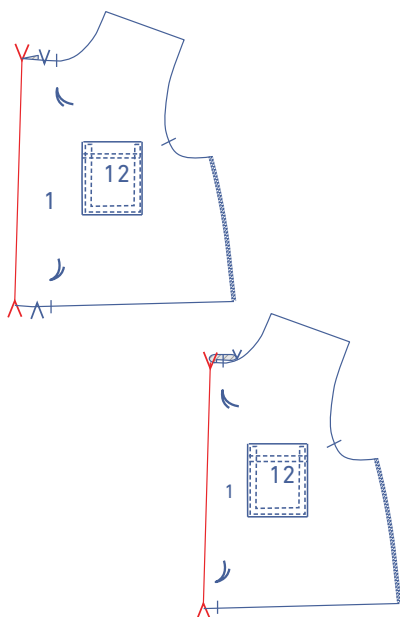


First, press the top edge of the pocket (12)  $\frac{3}{8}$ " onto the wrong side. Next, fold over to the V notches. Sew into place right next to the edge. Sew into place using two rows of topstitching.

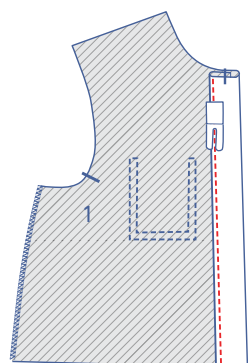
Press the seam allowance of the remaining 3 sides over to the wrong side.



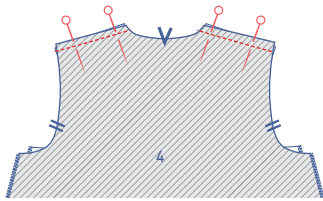
Pin the pocket at the place indicated on the top front. Sew into place right next to the edge. At the top, sew reinforcement triangles on both sides. Pin the pocket at the place indicated on the top front. Sew into place using two rows of topstitching. Sew a horizontal row at the top.



Press the shaped facing of both top front pieces over at each of the V notches.

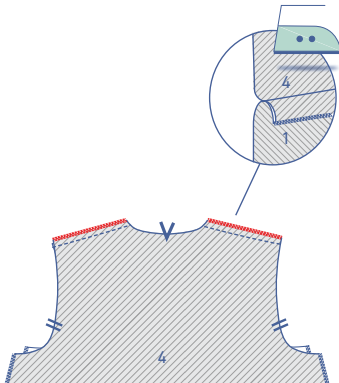


Sew into place right next to the edge.

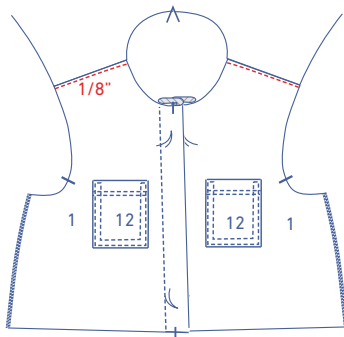


## 2

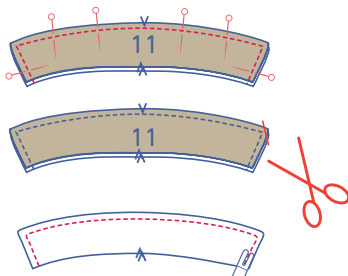
Pin and sew the shoulder seams of the top front to the top back.



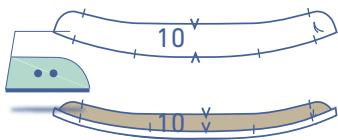
Finish the raw edges together with overlock stitching. Press the seam allowance toward the front of the top.



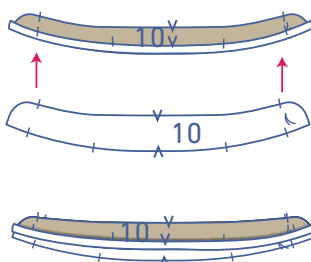
Top stitch these  $\frac{1}{8}$ " away from the seam.



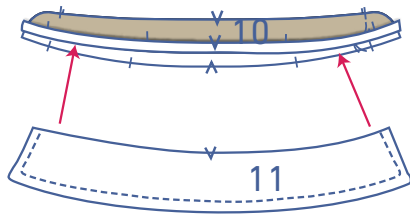
Pin and sew the contour of the collars (11) to each other, except for the bottom. Trim the seam allowance in the corners. Turn inside out and top stitch these away from the seam.



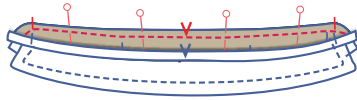
Press one of the two collar bands (10) at the bottom  $\frac{3}{8}$ " over to the wrong side.



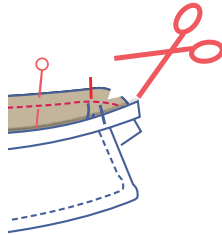
Stack both collar bands with the right sides facing each other. The collar band with the pressed over bottom should be on top.



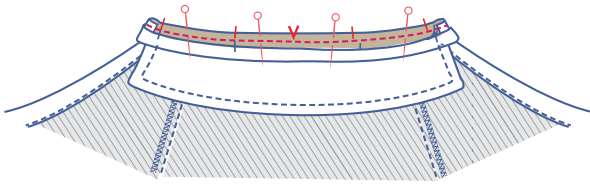
Slide the collar with the right side facing up between the two collar stands and align the raw edges.



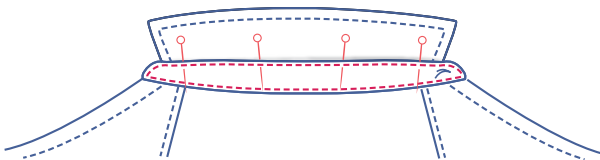
Pin and sew the pieces together.



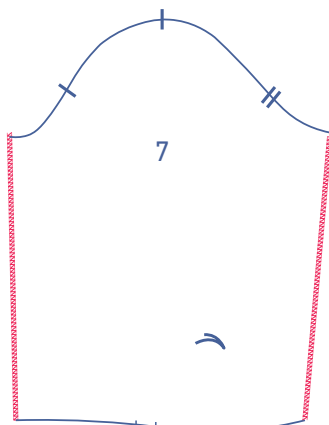
Grade and trim the seam allowances in the curves. Turn the collar bands inside out.



Pin and sew the bottom of the collar stand that has not been pressed to the neckline along the right side to the wrong side of the jumpsuit.



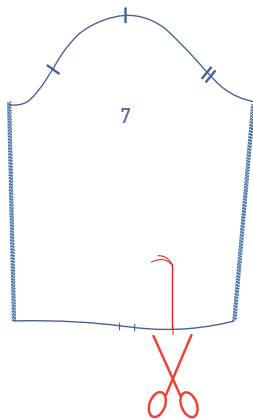
Fold the collar band with the bottom that has been pressed onto the wrong side of the jumpsuit neckline. The fold line should lie just on the previous stitching. Pin and sew in place. Finish the stitching around the collar band. Fold the collar stand with the bottom that has been pressed over to the right side of the jumpsuit neckline. The fold line should lie precisely over the previous row of stitching. Pin and sew into place. Finish the stitching around the collar stand.



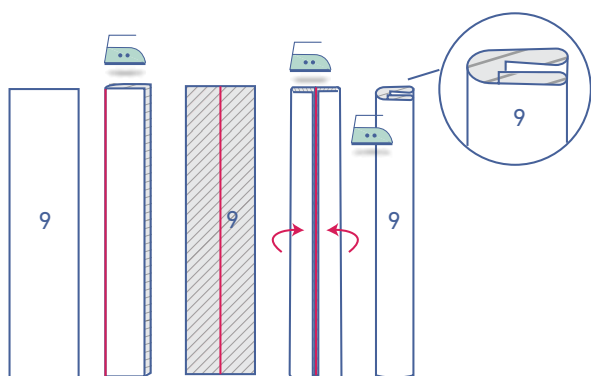
### 3

Finish the sides of the sleeve (7) with overlock stitching.



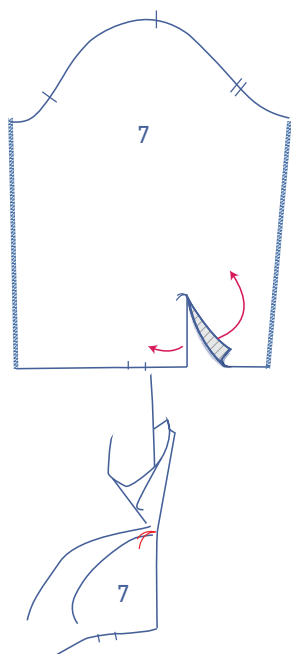


Cut the sleeve on the indicated line up to the basting thread.

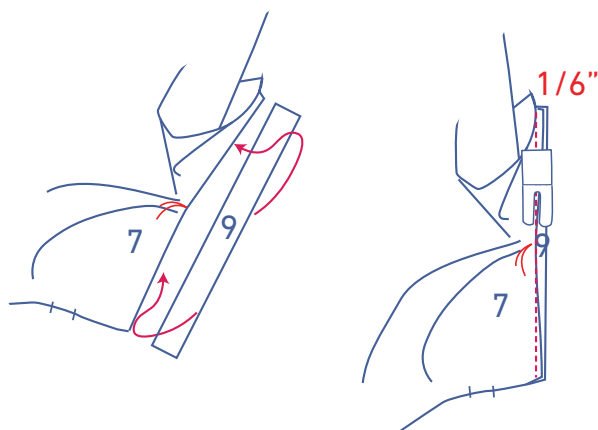


Press the trim (9) of the arm slit as follows:

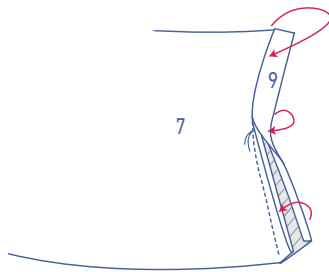
- Start by pressing the trim in half lengthwise all the way down and fold back open again.
- Next, press the long sides until the raw edges line up with the centre line.



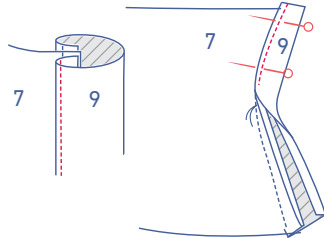
Open the sleeve split so that you end up with a single straight line.



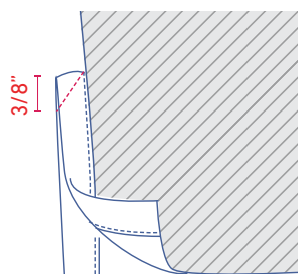
Slide the bias arm split under the sleeve with the right side facing up. Match the raw edges together and pull the sleeve a bit to the side at the basting thread. Sew a parallel line  $\frac{1}{6}$ " from the raw edge. Only a few fabric threads have been sewn in place at the basting thread.



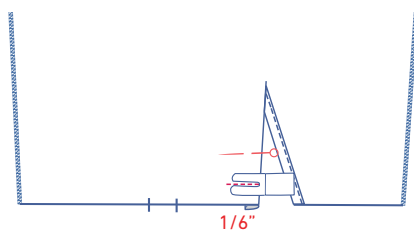
Fold the bias towards the right side of the sleeve and lay the fold line directly onto the previous stitching.



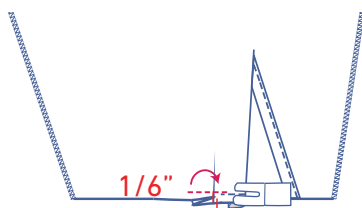
Sew into place right next to the edge.



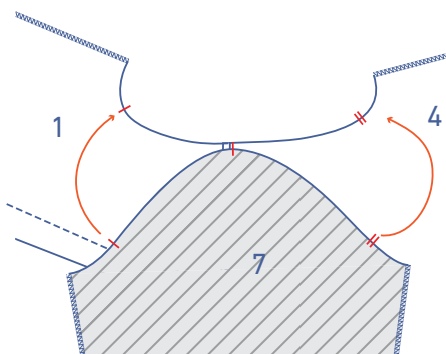
Fold the sleeve in half lengthwise, with the right side of the fabric facing inwards. Sew the tops of the biases together. Sew a diagonal line starting from the corner. Fold the sleeve back open.



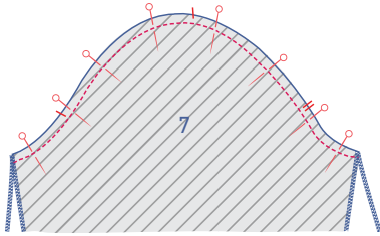
Fold the bias at the front of the sleeve (i.e., the widest side of the sleeve hem, i.e., the side where the nicks of the fold are) over to the wrong side of the sleeve and sew the bias in place at  $\frac{1}{6}$ " from the bottom.



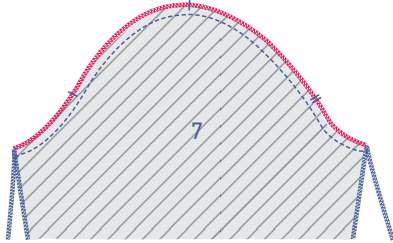
Create the fold by matching all of the nicks in the direction indicated. Sew the fold together  $\frac{1}{6}$ " from the edge.



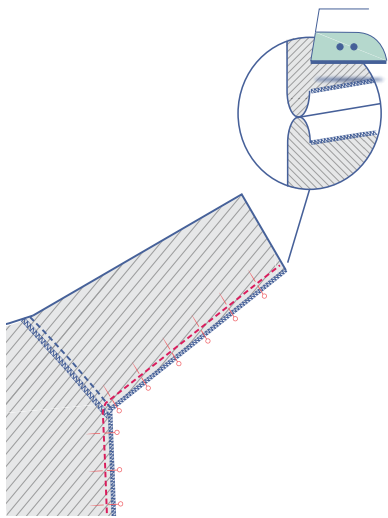
Line up the sleeve cap with the armhole, matching the corresponding marks. The single sleeve nick matches the single nick on the front and the double sleeve nicks with the double nicks on the back. The top single sleeve nick matches the shoulder seam.



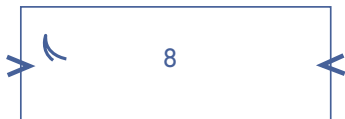
Pin and sew in place.



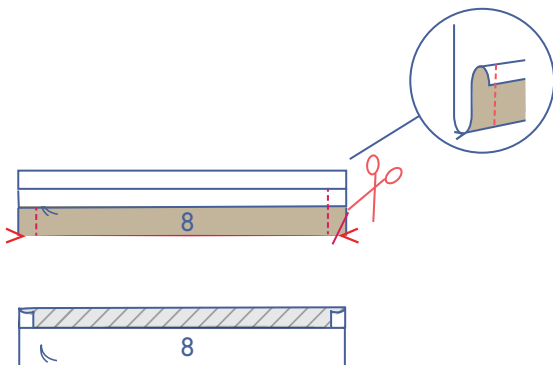
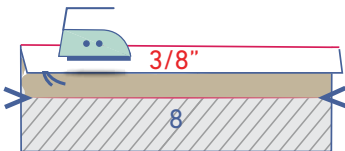
Finish the raw edges together with overlock stitching.



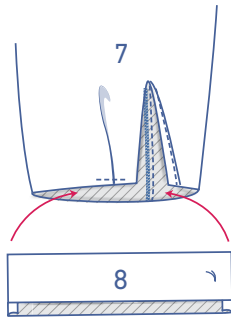
Pin and sew the underarm and side seam. Press open the seam allowance.



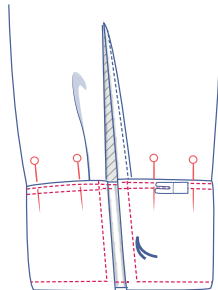
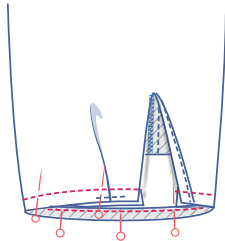
Press  $\frac{3}{8}$ " along the long side of the wrist trim (8) seam allowance (on the side where the buttons and buttonholes are located) over to the wrong side.



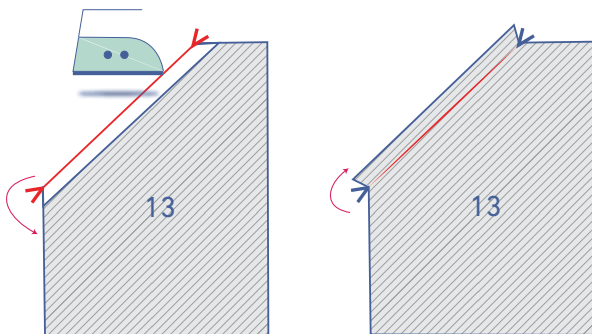
Fold the wrist trim in half at the V notches with the right side of the fabric facing inwards. Sew the short sides. Trim the seam allowance and turn the right way out.



Slide the wrist trim into the sleeve. Pin and sew the pressed over raw edge of the wrist trim to the bottom of the sleeve along the wrong side of the sleeve.

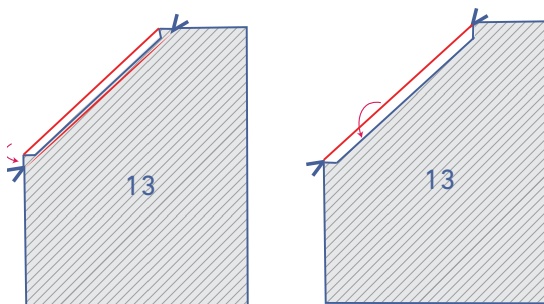


Fold the wrist trim towards the right side of the sleeve and place the fold line (of the pressed over seam allowance) directly over the previous stitching. Sew into place at  $\frac{1}{8}$ " from the fold line. Top stitch all the way around the wrist trim at  $\frac{1}{8}$ " from the edge. Fold the wrist trim towards the right side of the sleeve and place the fold line (of the pressed over seam allowance) directly over the previous stitching. Sew into place at  $\frac{1}{8}$ " from the fold line. Now, sew a second row of stitching at presser foot width from the first and continue sewing around the wrist trim at  $\frac{1}{8}$ " from the edge.

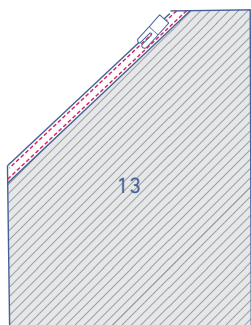


**4**

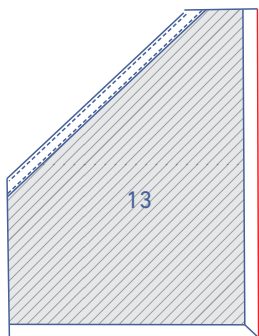
Press the slanted edge of the pocket (13) at the V notches over to the wrong side and fold back up again.



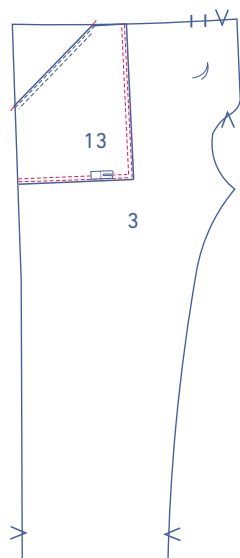
Fold the raw edge up to the pressed fold line and then fold again.



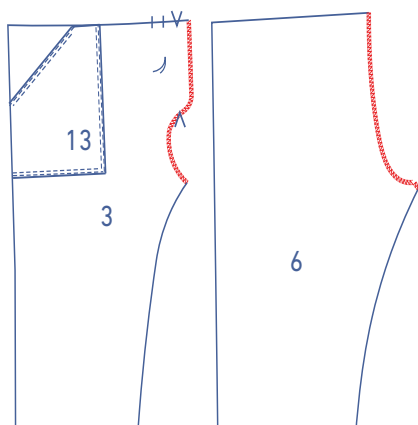
Sew into place using two rows of topstitching.



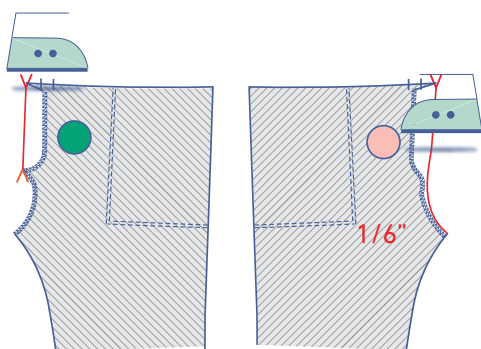
Press the marked edges  $\frac{3}{8}$ " over to the wrong side.



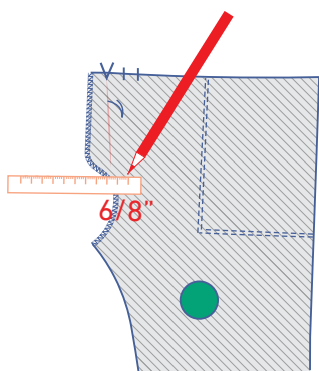
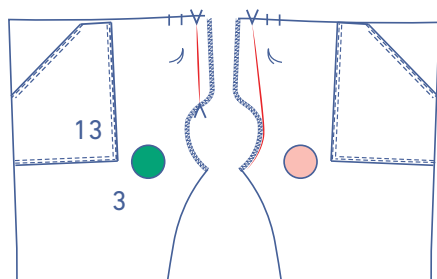
Pin the pocket to the trouser front piece (2) with the finished slanted edge of the pocket matching the nicks. Sew the sides indicated right next to the edge. Topstitch next to the first line of stitching at presser foot width.



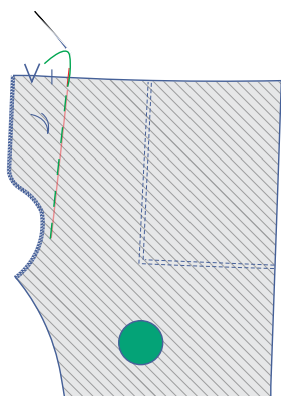
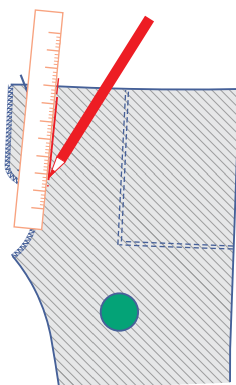
Finish the CF and CB seams with overlock stitching.



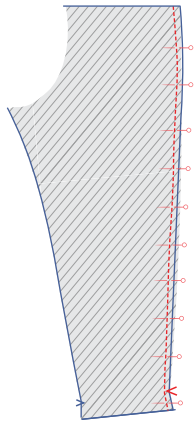
Press the shaped facing of the right front over at the V notches and then fold back open. Press the shaped facing of the left front over at the V notch at the top. Press the seam allowance over =  $\frac{1}{6}$ ". Fold back open again.



Turn the right front over with the wrong side facing up. Use tailor's chalk to make a mark  $\frac{6}{8}$ " to the right of the the CF. Connect this mark to the further single nick at the top and the stitching at the crotch seam. ( $\frac{3}{8}$ " away from the edge).

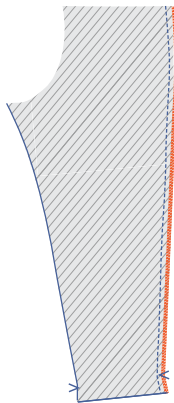


Thread along this line so that it is is easy to see on the right side of the RF.

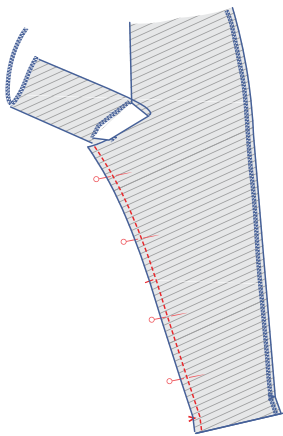


## 5

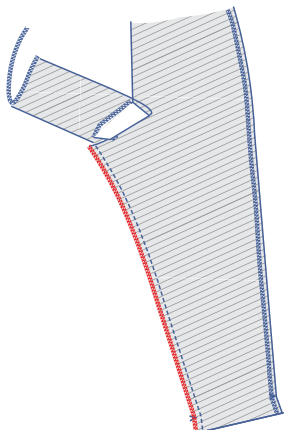
Pin and sew the side seams into place.



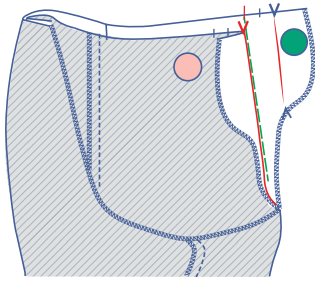
Finish the raw edges together with overlock stitching.



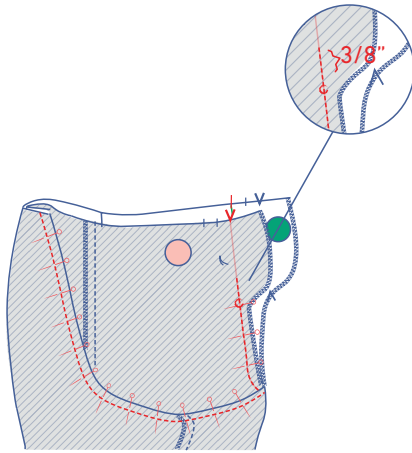
Pin and sew the inseams.



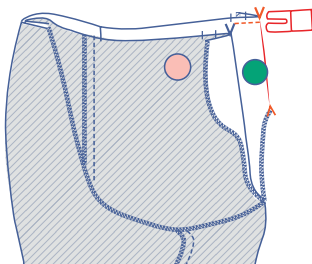
Finish the raw edges together with overlock stitching.



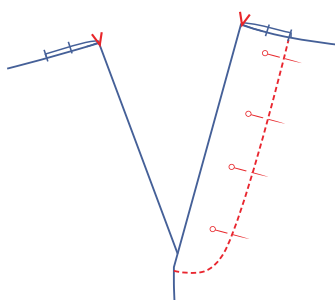
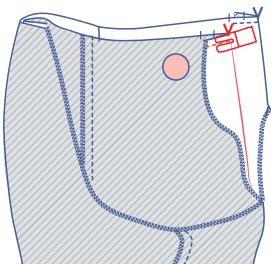
Slide the one trouser leg into the other. Place the pressed fold line of the LF against the marked line of the RF. The V notch of the LF should match the furthest single nick on the RF. The corners (of the crotch) and the raw edges of the inseams should match.



Press the crotch seam to  $\frac{3}{8}$ " above the mark.

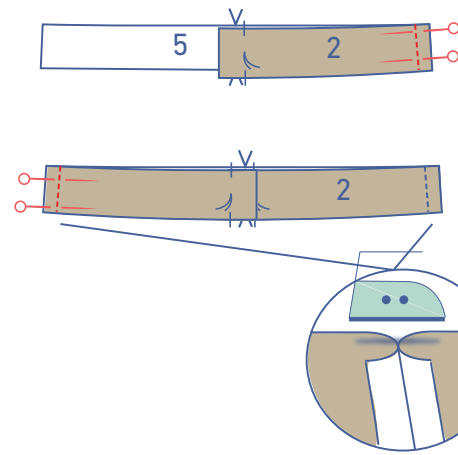


Press the shaped facing of the RF over and sew into place at  $\frac{1}{6}$ " cm from the edge. Press the shaped facing of the LF too over at the pressed fold line.



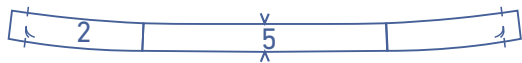
Sew into place with top stitching.



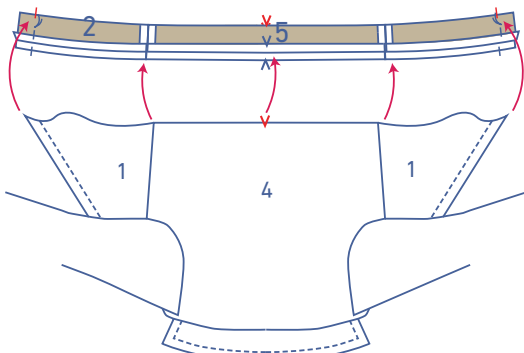
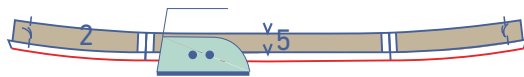


## 6

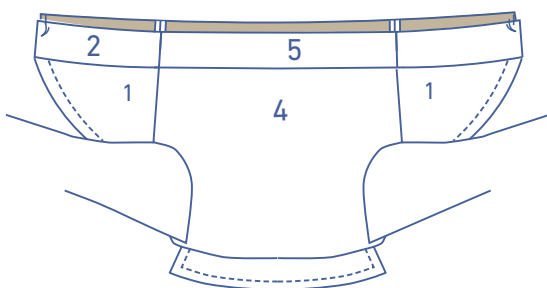
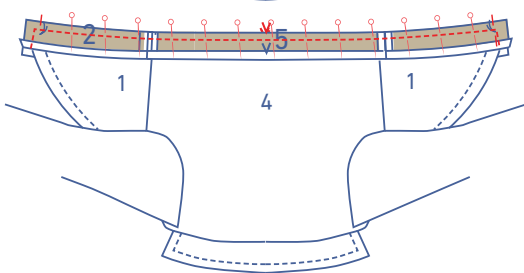
Pin and sew all of the side seams of the waistband front (2) and the waistband back (5). Press open the seam allowances.



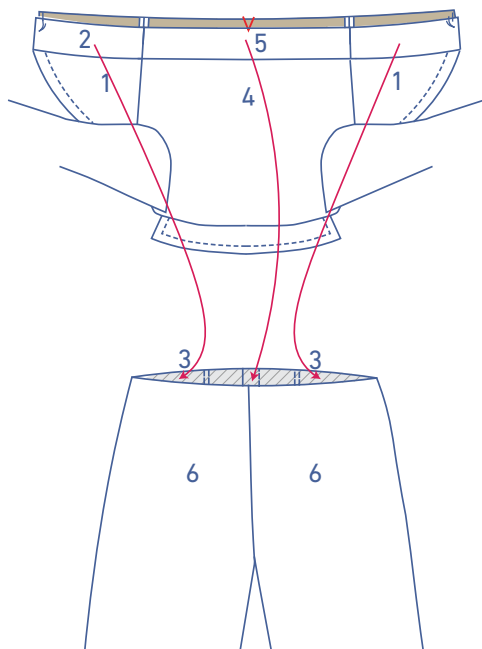
Press 1 waistband at the bottom  $\frac{3}{8}$ " onto the wrong side.



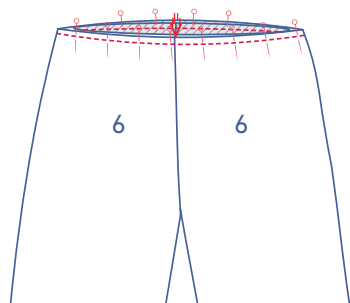
Place both waistbands with the right sides facing together and slide the top piece between. Match all seams and nicks. Pin and sew the short ends into place as indicated in the illustration.



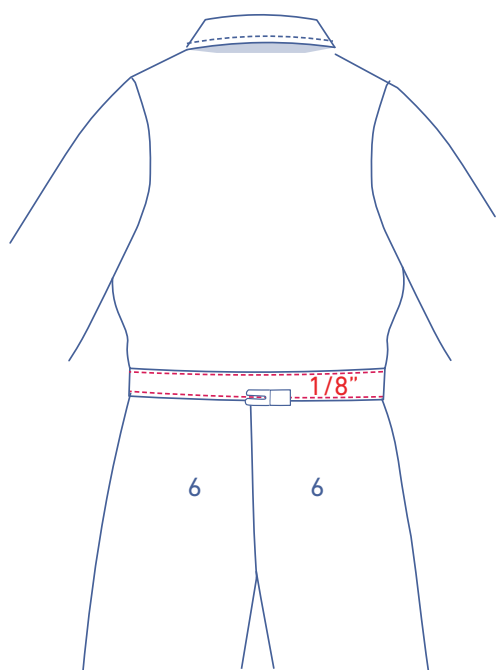
Turn the right way out.



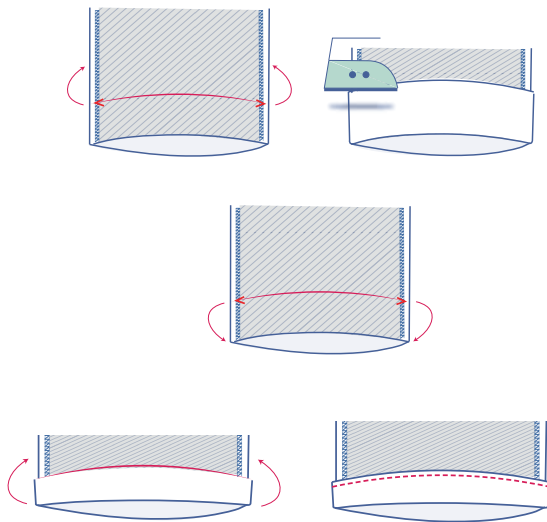
Pin the unpressed edge of the waistband to the wrong side of the trousers.



Neatly match all seams and nicks. Sew into place.



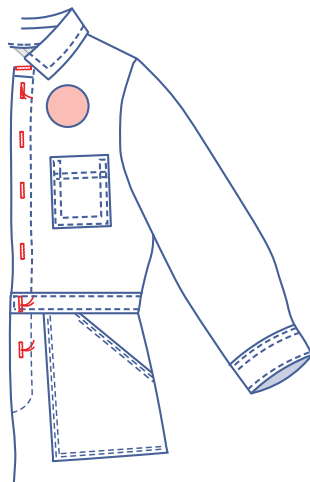
Fold the fold line of the pressed edge of the waistband just over the previous stitching and sew into place around the waistband at  $\frac{1}{8}$ " from the edge.



## 7

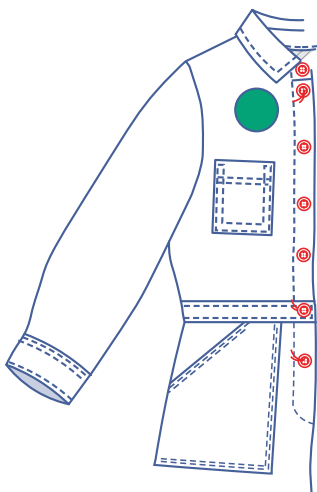
Press the hem allowance up to the V notches and then unfold.

Fold the raw edge up to the pressed fold line and then fold again. Sew into place.

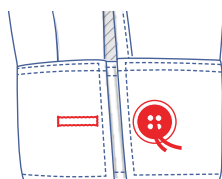


## 8

Make a horizontal buttonhole on the right end of the collar stand halfway up and  $\frac{3}{8}$ " from the end. Make vertical buttonholes on the RF based on the location of the buttons. The top and bottom button are marked on the pattern. Divide the distance equally to determine the position of the other buttons.



Sew the buttons to match the location of the buttonholes. The button should line up with the top  $\frac{1}{3}$  of the buttonhole.



Sew the buttons to the wrist trims. Based on the position of the button, make a horizontal buttonhole halfway up the side with the pleat and  $\frac{3}{8}$ " from the end.

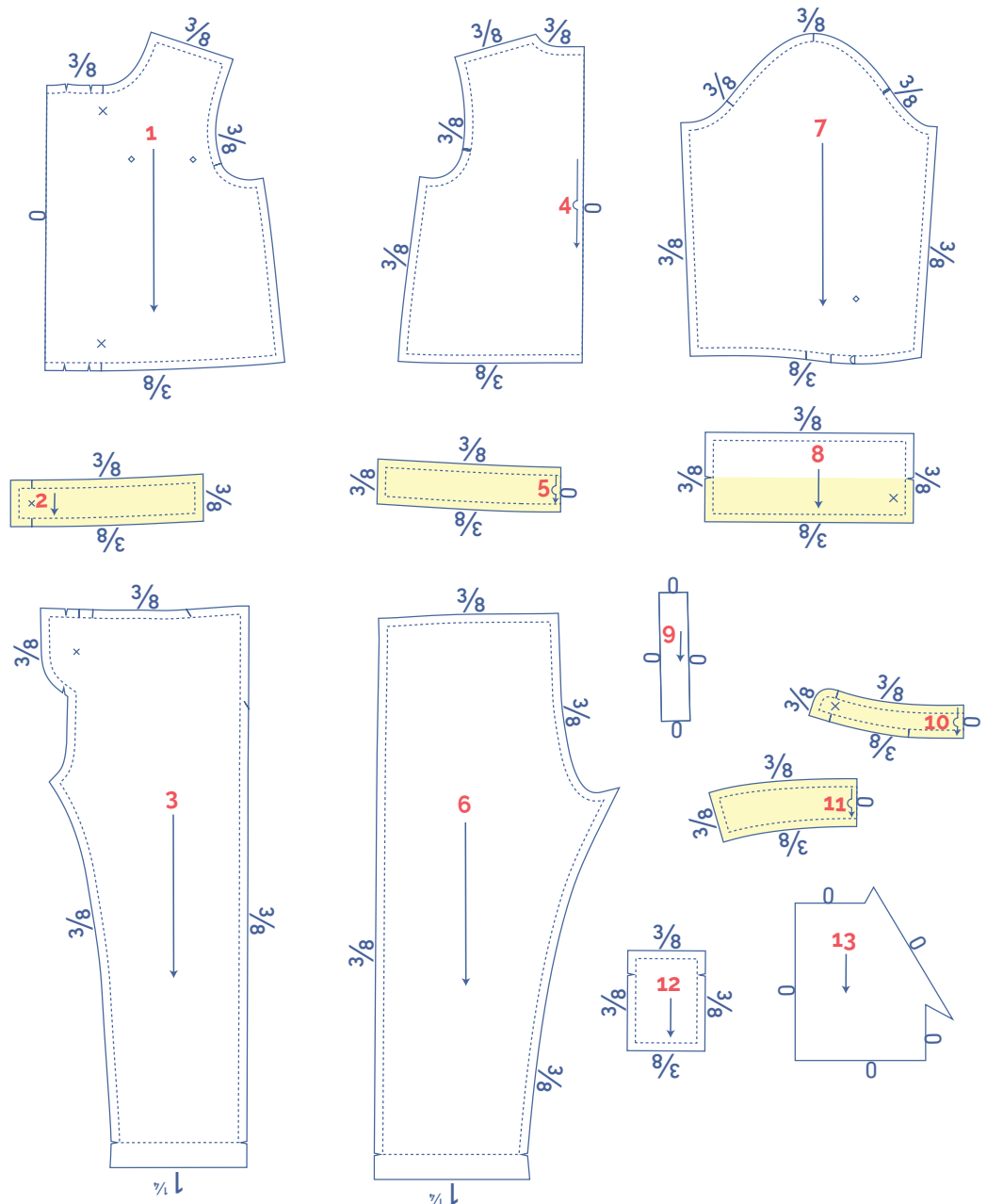
## pattern pieces & seam allowances (in inches)

To sew the garment together as described in the instructions, you must draw the illustrated seam allowances around the paper pattern pieces before cutting them out.

1. front bodice piece: 2x
2. waistband front: 4x
3. trouser front: 2x
4. back bodice piece: 1x on fabric fold
5. waistband back: 2x on fabric fold
6. trouser back: 2x
7. sleeve: 2x
8. wrist trim: 2x
9. sleeve trim: 2x
10. collar stand: 2x on fabric fold
11. collar: 2x on fabric fold
12. chest pocket: 2x
13. pocket: 4x

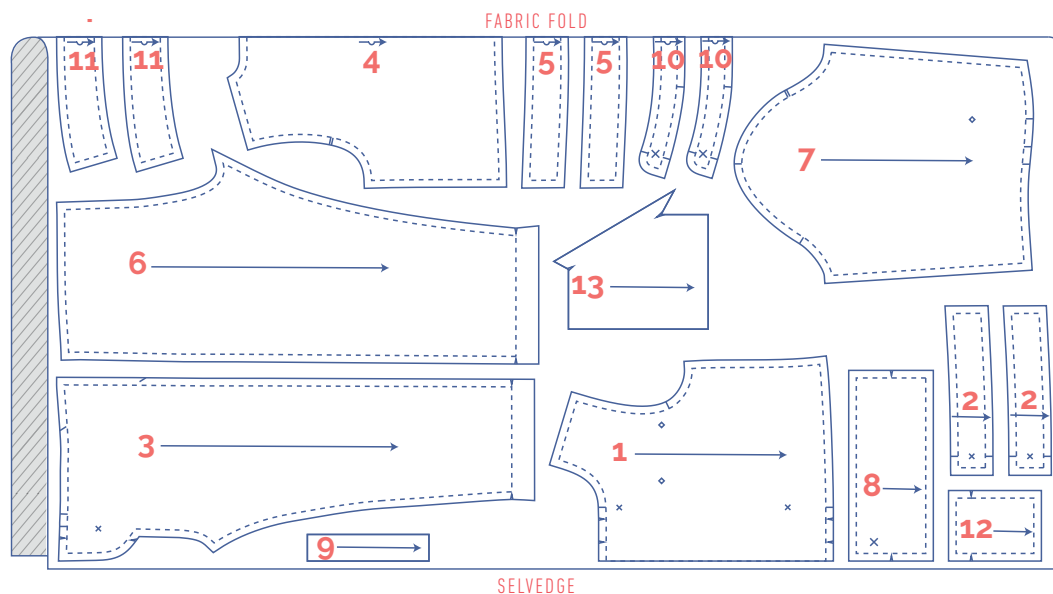
**IMPORTANT**

The pieces highlighted in light yellow are attached along the wrong side using iron-on interfacing.

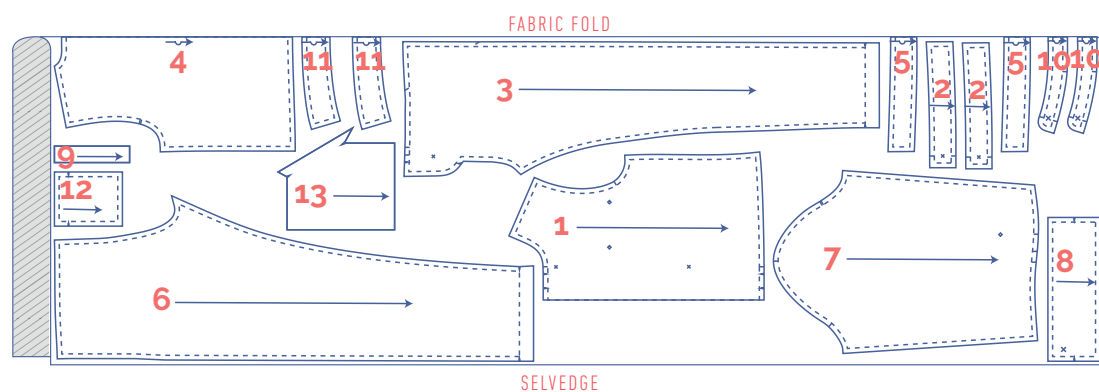


# fabric plan for fabrics 55" wide

2 - 6

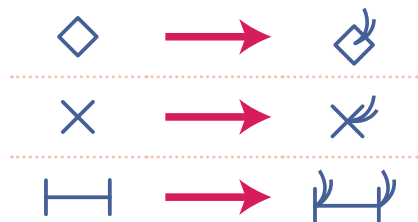


8 - 14



## marking pattern pieces after cutting

- Mark the following points using basting thread:



- Nick the pattern paper and fabric at the places where a single vertical line (I) and double vertical lines (II) are indicated.
- Cut a small corner out of the fabric at a V notch symbol or on the finished hemline.
- Cut a small corner (V notch) out of the pieces that lie on the fabric fold (—) to mark the middle of these pieces.