

Hunter by Fibre ⚡ood

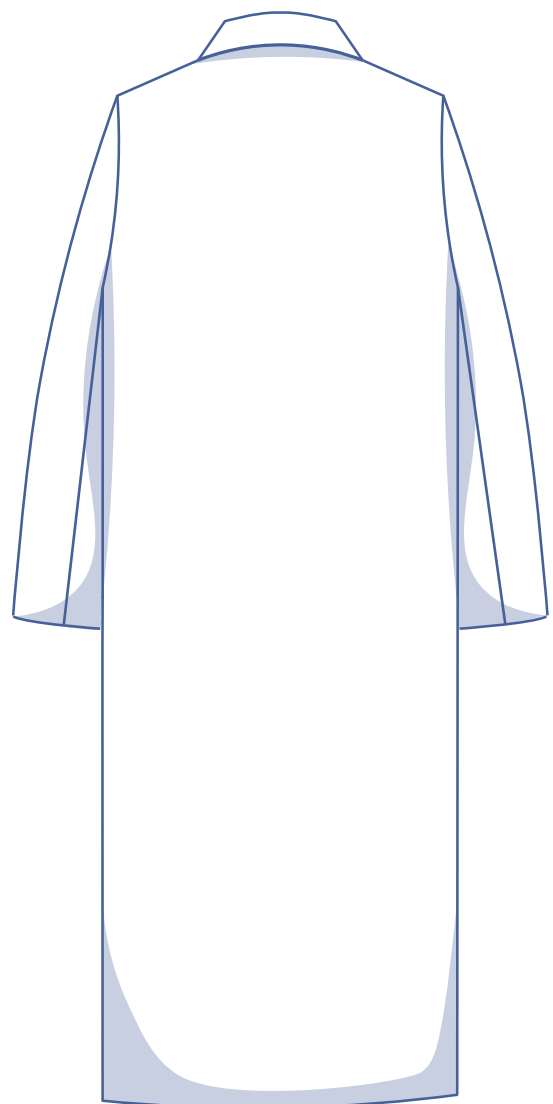
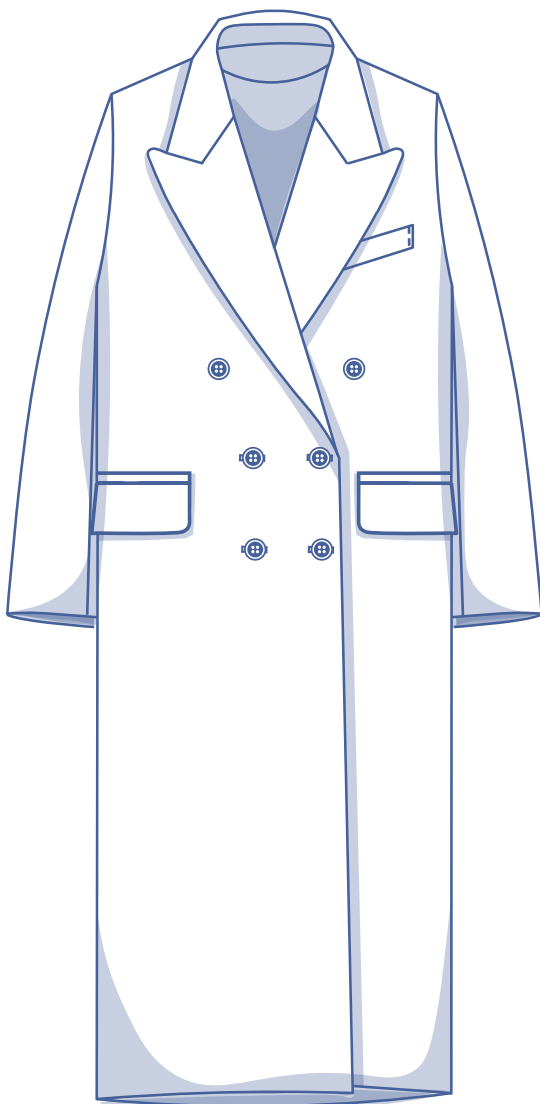


Hunter by Fibre Mood



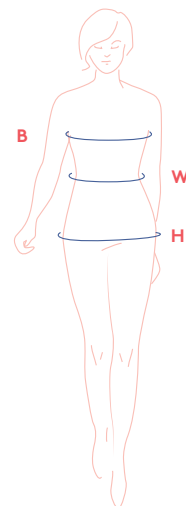
XS - XXXL

Long, longer, longest! Loose oversized coats are one of winter's cosiest trends and the Hunter is the perfect piece to wear over a long dress or skirt. It really does have it all: original collar and lapel, double row of buttons, a chest welt pocket and two welt pockets with a flap. Make this one up in a warm wool coating, trending gingham print or a classic solid - either way you'll be set for those chilly days ahead.



size chart

size	XS		S		M		L		XL		XXL		XXXL	
EU	32	34	36	38	40	42	44	46	48	50	52	54	56	58
UK	4	6	8	10	12	14	16	18	20	22	24	26	28	30
US	0	2	4	6	8	10	12	14	16	18	20	22	24	26
B (cm)	76	80	84	88	92	96	100	104	116	122	128	134	140	146
B (inches)	29.9	31.5	33.1	34.6	36.2	37.8	39.4	40.9	43.3	45.7	48	50.4	52.8	55.1
W (cm)	66	68	70	74	78	82	84	88	94.5	101	107.5	114	120.5	127
W (inches)	26	26.8	27.6	29.1	30.7	32.3	33.1	34.6	37.2	39.8	42.3	44.9	47.4	50
H (cm)	86	90	94	97	100	103	106	109	115	120	125	130	135	140
H (inches)	33.9	35.4	37	38.2	39.4	40.6	41.7	42.9	45.3	47.2	49.2	51.2	53.1	55.1



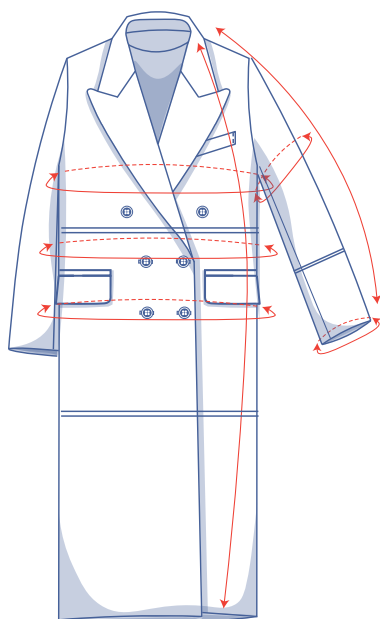
Bust (B): measure horizontally around the fullest part of the bust.

Waist (W): measure horizontally at the narrowest point of the body.

Hip (H): measure horizontally around the widest part of the lower body.

To select the right size for this pattern, the bust measurement should be your guideline. Pick the size that is the best match for your bust. Altering the hips is simple. When you are tracing the waist, simply merge the two lines together between the waist and hips.

finished garment measurements (in cm)



This chart's measurements are based on the fabric type and serve as a reference. Ease has been added to the width measurements (on top of the exact body measurements) for a more comfortable fit and to achieve a particular cut (fitted, loose or oversized). Depending on the fit you prefer, you could choose to size up or down accordingly.

size	XS	S	M	L	XL	XXL	XXXL
length	132	133	134,25	135,25	138	139,5	141
sleeve length*	72,75	74,5	76,25	77,75	80,25	82,25	84,25
bust	103,25	111,25	119,25	127,25	137,25	149,25	161,25
waistline	103,25	111,25	119,25	127,25	137,25	149,25	161,25
hips	108,5	116,5	124,5	133	143	155,5	167,5
upper arm circumference	34	36,75	39,75	42,75	45,5	50	54,5
sleeve hem circumference	25,5	27	28,5	30	31,5	33	34,5

* Including the shoulder length.

Compare the stated lengths to the measured or desired lengths. **Lengthen** or **shorten** the jacket and/or sleeves by cutting the pattern pieces at the place(s) indicated by a double line on the drawing above and then spreading the pattern pieces out X cm from each other or overlapping them, where necessary. Make sure that the CF and CB lines and the side seams are always straight.



IMPORTANT

Adjust the fabric amount based on these alterations.

supplies



- Thread
- Iron-on interfacing: max. 360 cm
- Buttons (Ø 2.5 cm): 8
- Shoulder pads
- Lining: see table
- Fabric: see table

lining amount (in cm)	XS	S	M	L	XL	XXL	XXXL
fabric width 140 cm	200	205	205	205	260	310	320

fabric used (in cm) F collection	XS	S	M	L	XL	XXL	XXXL
leopard print wool fabric fabric width 145 cm	310	315	325	335	390	395	400
check jacquard jersey fabric width 146 cm	435	440	445	450	455	465	475

Discover the Fibre Mood fabric collection and the accompanying fabric layouts [here](https://www.fibre mood.com/en/fabrics) or on www.fibre mood.com/en/fabrics.

fabric used (in cm) standard	XS	S	M	L	XL	XXL	XXXL
fabric width 140 cm	315	320	330	380	390	395	405

The corresponding fabric plan can be found on the last page of these sewing instructions.

fabric advice



All kinds of coating fabric work with for the Hunter coat. Wool and wool blends are ideal, but you could also use heavyweight stretch fabric like the one in our sample. Go for solid colours, prints or checks!

sewing instructions



The method used to finish the garment will depend on your chosen fabric. The pieces are always sewn together with right sides facing, unless stated otherwise.

F front

B back

RF right front ●

LF left front ●

CF centre front

CB centre back

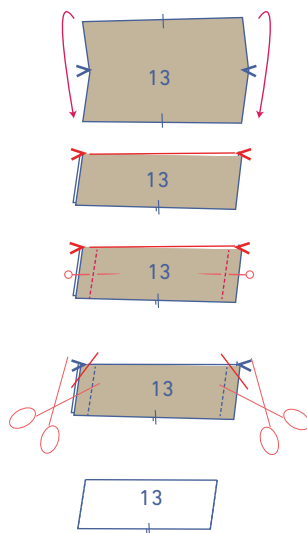
□ right side

▨ wrong side

□ lining right side

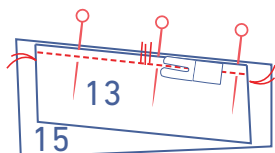
▨ lining wrong side

▨ iron-on interfacing

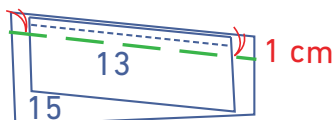


1

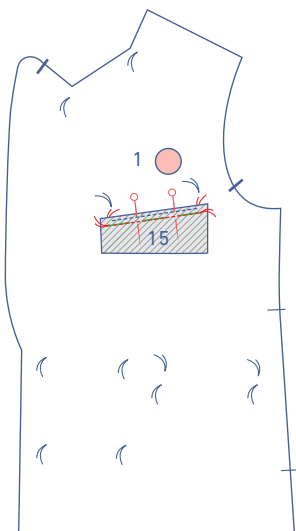
Fold the chest pocket welt (13) in half lengthwise with the right side of the fabric facing inwards and sew 1 cm parallel from the ends. Trim the corners and turn the right way out.



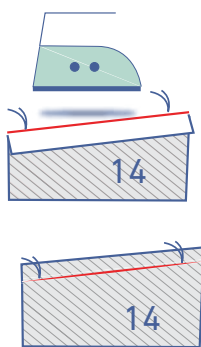
Pin the raw edges of the welt to the slanted side of the inner pocket bag (15) with the nicks matching. (**PLEASE NOTE:** if the nicks don't match, then you've lined up the welt with the wrong side up). The finished welt should fit between the basting threads, so that there is seam allowance left on both ends of the welt. Sew into place at presser foot width.



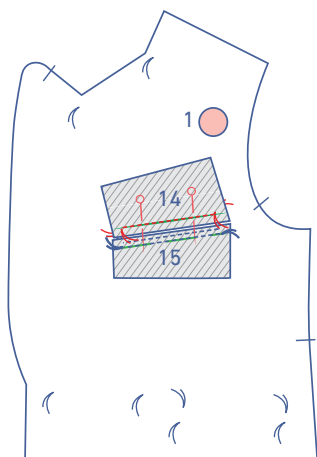
Using a basting stitch length, sew a guideline 1cm parallel to the raw edges up to and through the basted thread.



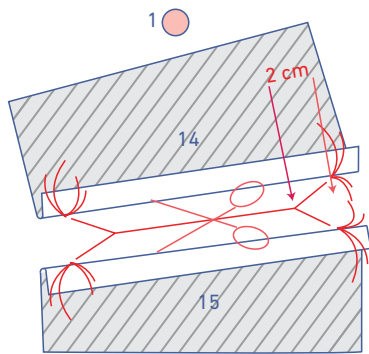
Lay the chest pocket welt + inner pocket bag on the LF (1) with the inner pocket bag basting matching the bottom basting on the front. The front of the welt should be facing the right side of the front with the straight side of the inner pocket bag facing the hem. Sew to the front along the basted guideline that you made earlier. Pin precisely from one end of the basting to the other.



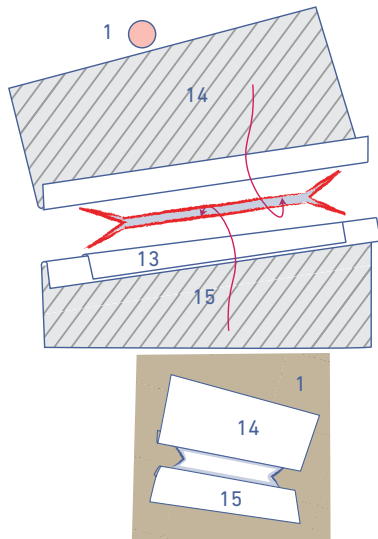
Press 1 cm of the outer pocket bag of the chest pocket (14) onto the wrong side to create a fold line. Now, open back out.



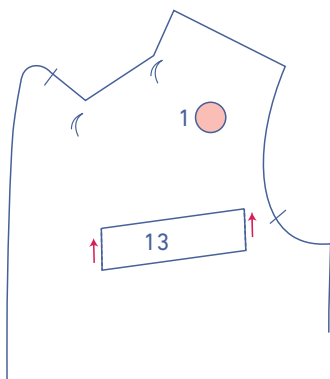
Place the outer pocket bag with the right side facing the front and with the basting matching the top basting on the front. The raw edge should be on the raw edge of the inner pocket bag. Sew right in the fold line on the front from one end of the basting to the other.



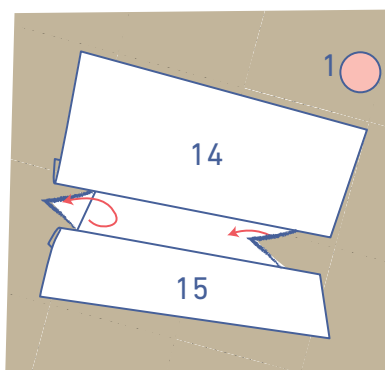
Carefully snip through the front between the 2 rows of stitching, stopping 2cm away from the basting thread. At both ends of the centre line, snip diagonally into the corners, stopping at the basting stitch and avoiding the pocket pieces.



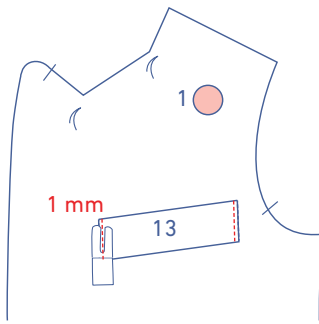
Fold the inner pocket bag and outer pocket bag through the cut opening to the wrong side.



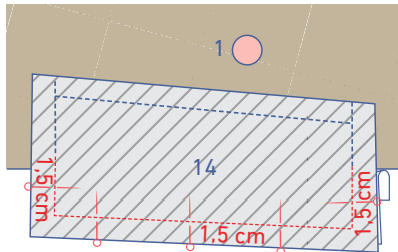
Place the right side of the welt against the right side of the LF.



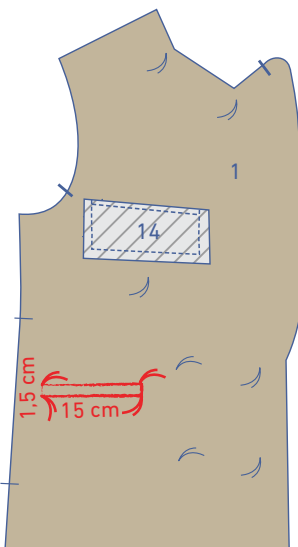
Fold the cut triangles (= the 4 diagonal lines cut) on either side of the pocket opening to the wrong side.



Sew the both ends of the welt in place on the right side of the front, at 1 mm from the edge.

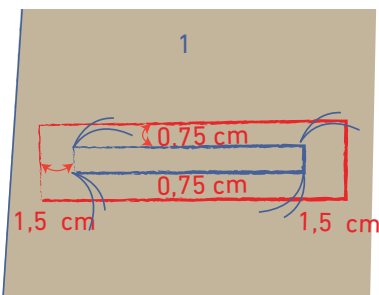


Fold the front over out of the way and sew the contours of the pocket pieces at 1.5 cm.

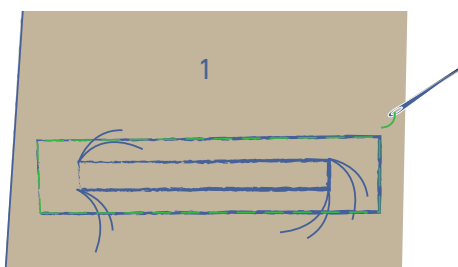


2

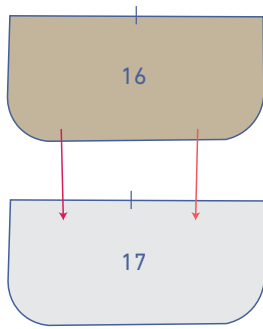
Connect the corners of the pocket opening (indicated by basting thread) along the wrong side of the front by drawing straight chalk lines. You should end up with a 1.5 x 15 cm rectangle.



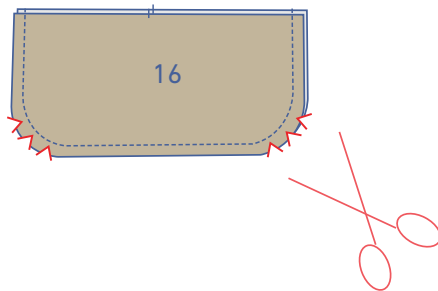
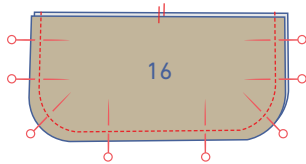
Draw parallel guidelines at 0.75 cm from the top and bottom and 1.5 cm in from the short ends of the rectangle.



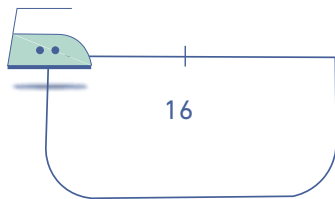
Use a brightly coloured thread to baste along these chalk lines, so that the guidelines are visible from the front.



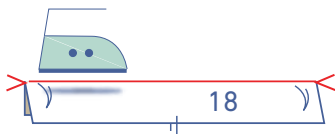
Pin and sew the contours of each flap piece (16) to each piece of flap lining (17), leaving the straight side free.



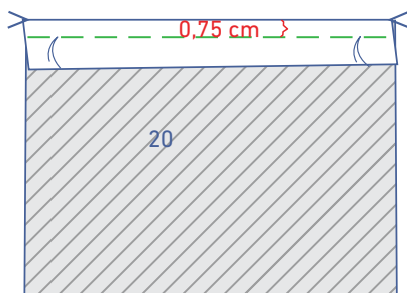
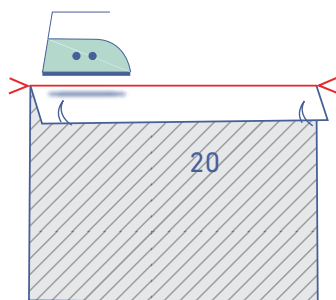
Cut triangles into the seam allowance around the curves.



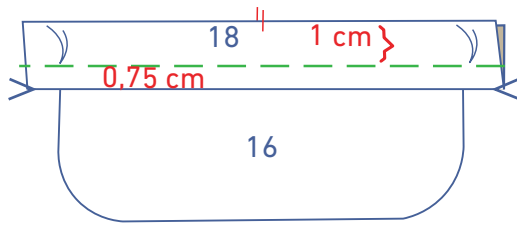
Turn right side out and neatly press flat.



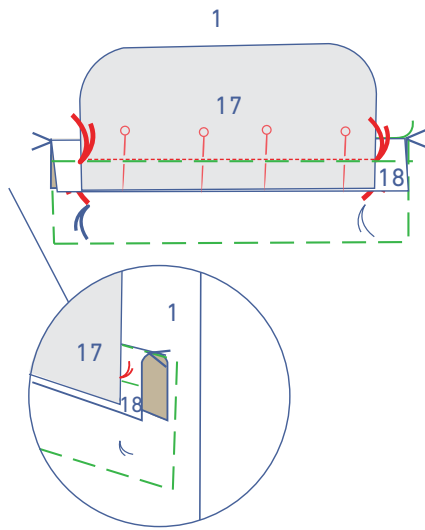
Press the welt (18) and welt + inner pocket bag (20) over at each of the V notches with the right side of the fabric facing outwards.



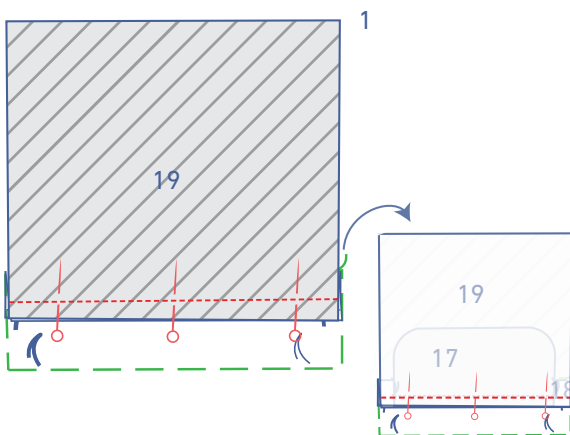
Stitch across the welt using a basting stitch length at 0.75 cm in from the edge.



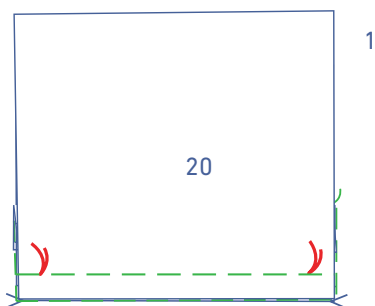
Slide the flap (16) under the welt and perfectly match the straight raw edge of the flap with the welt's raw edge, with nicks matching. Sew together using a basting stitch length.



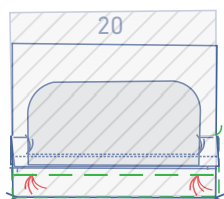
Place the welt's fold line (+ flap) on the marked line at the top of the rectangle and the edges of the pocket between the 2 vertical marked sides (the flap should be at the top). Pin the welt + flap to the front with the basting threads matching. Sew to the front along the basted guideline that you made earlier. Pin precisely from one end of the basting to the other.

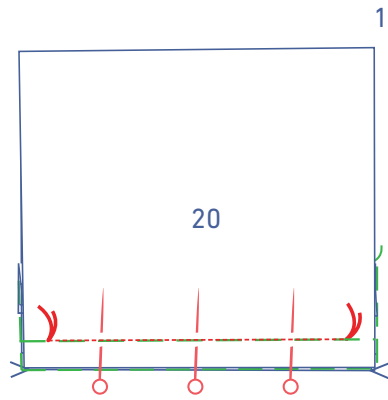


Pin and sew the outer pocket bag (19) to the raw edges of both flap and welt. Sew as close as possible to the previous row of stitching.

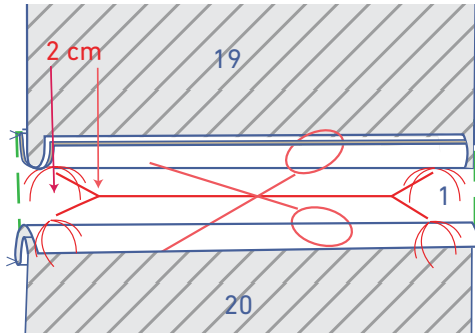


Place the fold line of the bottom welt + outer pocket bag on the marked line at the bottom of the rectangle and the edges of the pocket between the 2 vertical marked sides. Pin the welt + inner pocket bag to the front with the basting threads matching. Sew to the front along the basted guideline that you made earlier. Pin precisely from one end of the basting to the other.

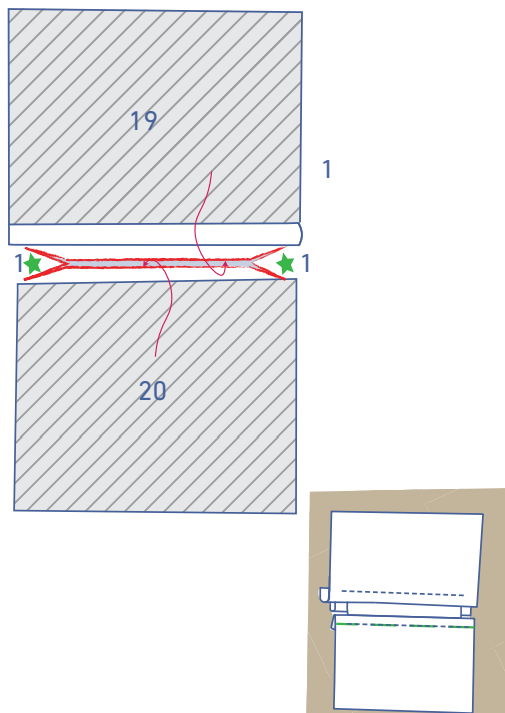




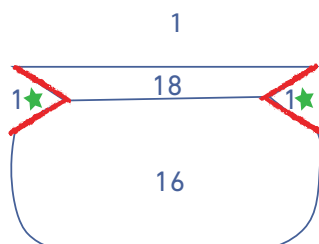
Pin the welt + inner pocket bag to the front along the basted guideline that you made earlier. Pin precisely from one end of the basting to the other.



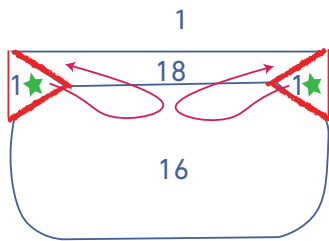
Carefully snip through the front between the 2 rows of stitching, stopping 2cm away from the basting thread. At both ends of the centre line, snip diagonally into the corners, stopping at the basting stitch and avoiding the other pieces.



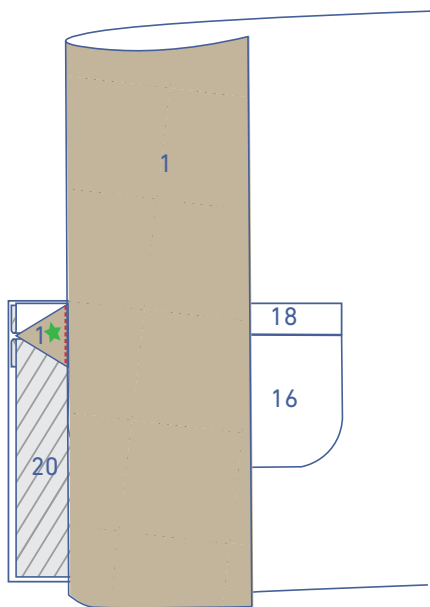
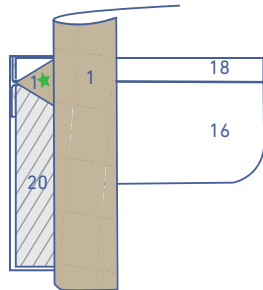
Fold the inner pocket bag and outer pocket bag through the cut opening to the wrong side.



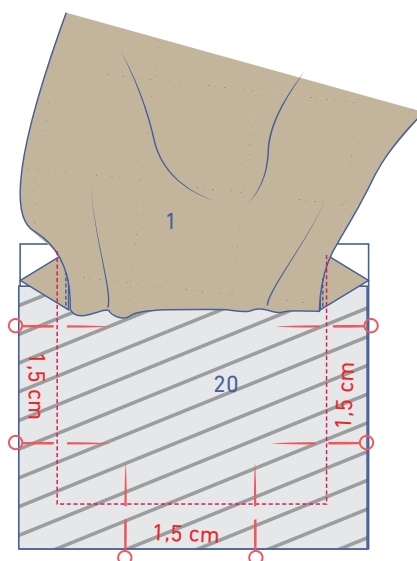
Neatly line up the right side of the top welt and the flap with the right side of the front.



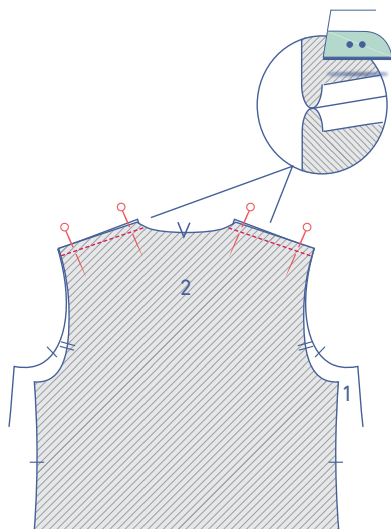
Fold the cut triangles (= the 4 diagonal lines cut) on either side of the pocket opening to the wrong side.



Lay both pocket pieces neatly flat, fold the front out of the way and sew the triangles to the pocket pieces, working from corner to corner. Make sure that you create neat right angles.

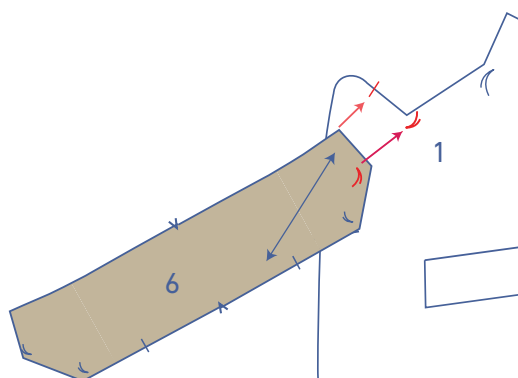


Pin and sew the contours of the pocket bags together at 1.5 cm.



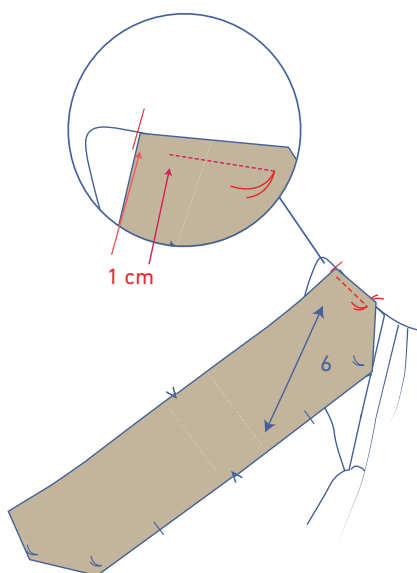
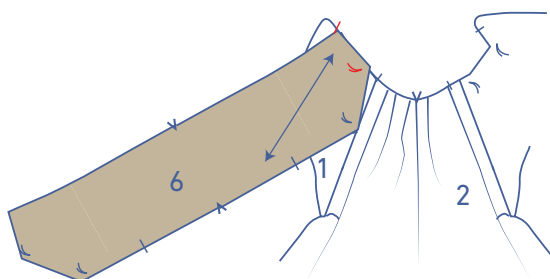
3

Pin and sew the shoulder seams of the front (1) and back (2) together and press the seam allowance open.

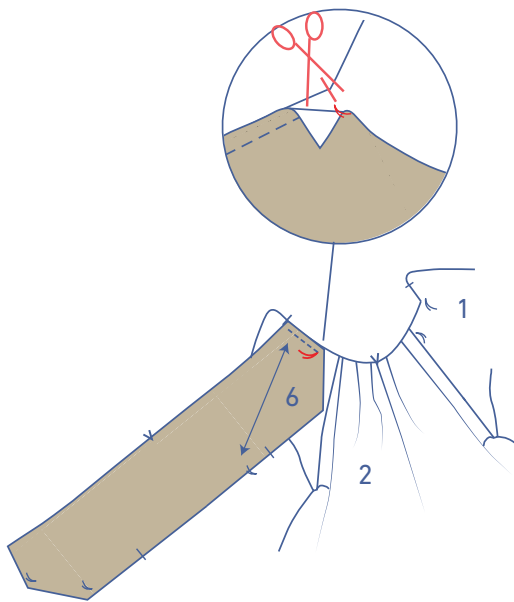


4

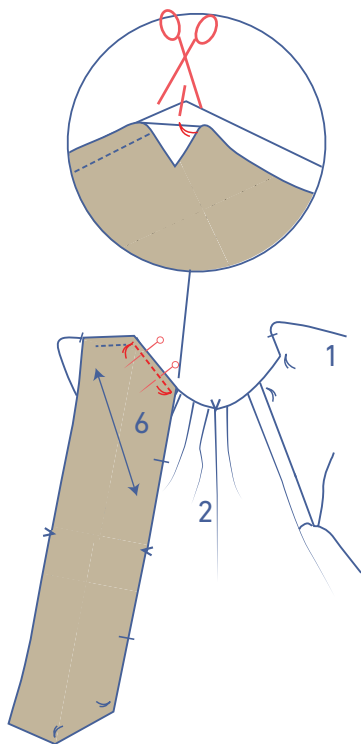
Line up one end of the under collar (6) (the collar piece that's been cut at an angle) with the diagonal nick on the front lapel. The remainder of the collar should be facing down. The first basting thread in the corner of the collar should be matching the first basting thread in the corner of the front.



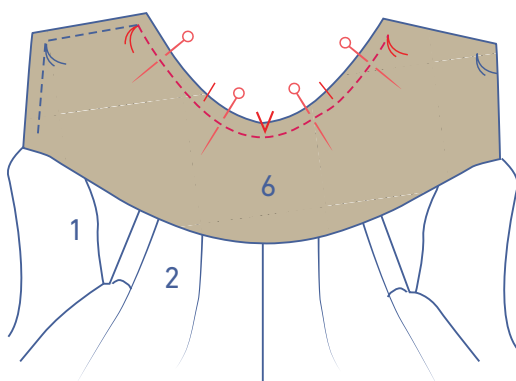
Pin and sew this end of the collar up to the first basting threads. Start sewing at 1 cm from the edge of the collar.



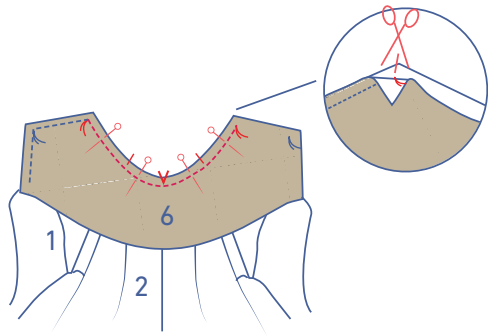
Leave the needle lowered in the fabric. Raise the presser foot and snip into the seam allowance until just before the needle. Turn the piece and lower the presser foot back down.



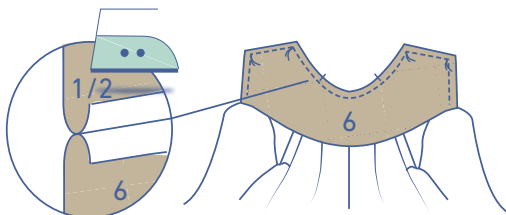
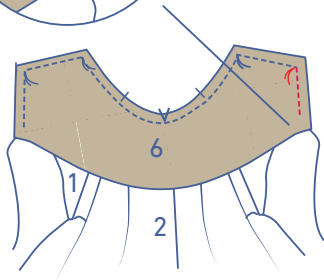
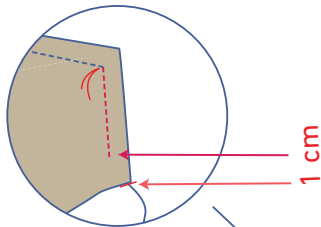
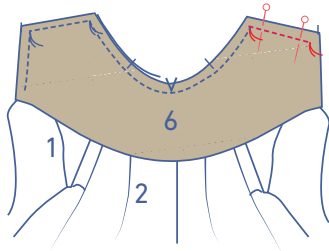
Now, sew the second part of the end between the basting threads. Leave the needle lowered in the fabric at the second basting thread. Raise the presser foot and snip into the seam allowance until just before the needle. Turn the piece and lower the presser foot back down.



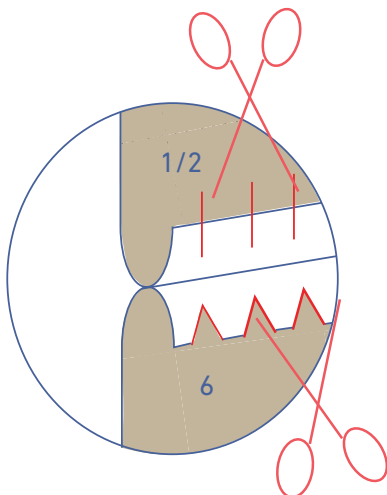
With the nicks matching, continue sewing the collar and the garment's neckline together until you reach the next basting thread.

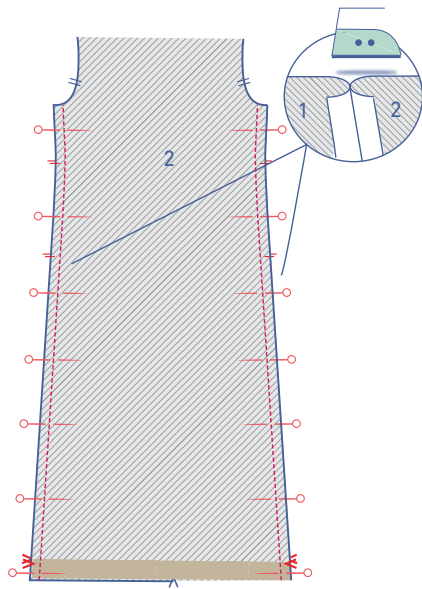


Repeat the same steps to sew the other end of the collar in place.



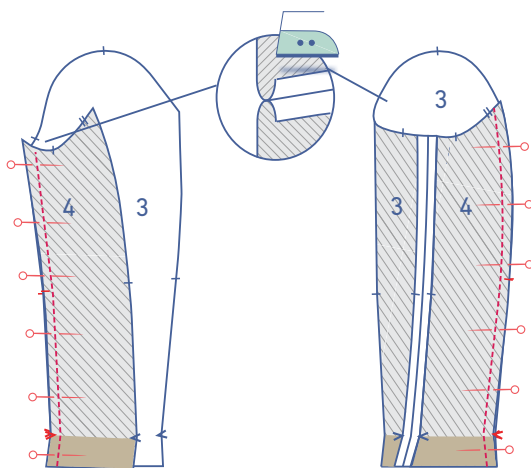
Press open the seam allowance. Cut notches out of the collar's seam allowance (there's a surplus of fabric) and snip into the seam allowance of the coat's neck (there isn't enough fabric, which means the collar won't drape neatly).





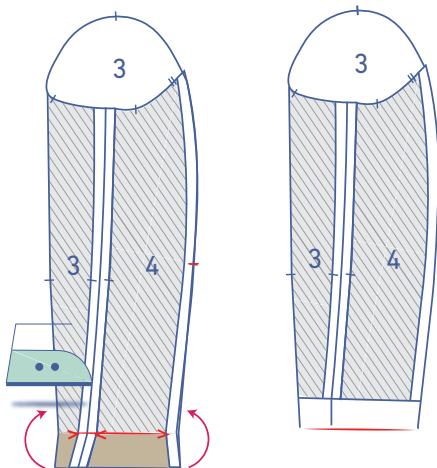
5

Pin and sew the side seams and press the seam allowance open.

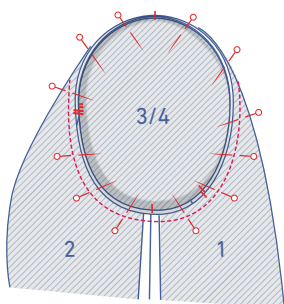


6

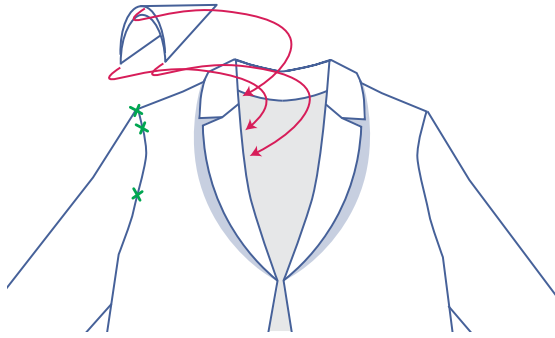
Pin and sew the underarm and seams of the top sleeve (3) and bottom sleeve (4). Press all of the seam allowance open.



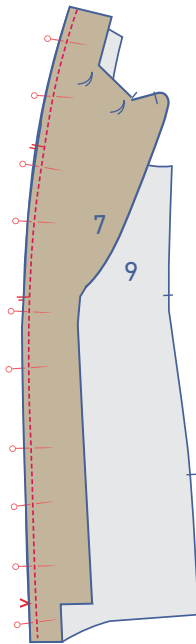
Press the seam allowance up to the V notches to create a crease.



Pin and sew the sleeve cap to the armhole, making sure that the corresponding nicks match perfectly. The single nick on the lower sleeve should line up with the side seam, with the single nick on the top sleeve lining up with the front, and the double nicks on the sleeve bottom with the back. The single nick at the top should be perfectly aligned with the shoulder seam. Distribute the excess fabric between the markings.

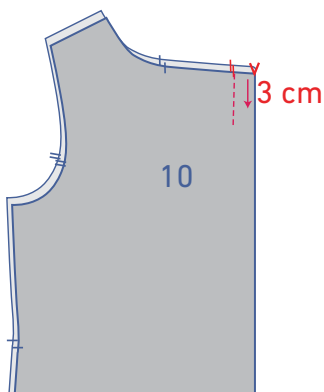


Sew the shoulder pads in.

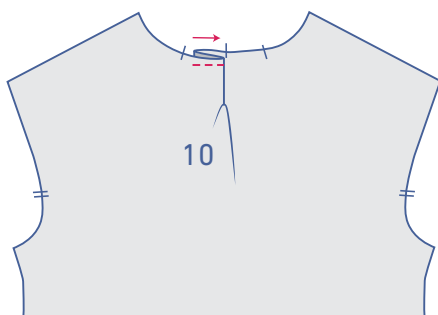


7

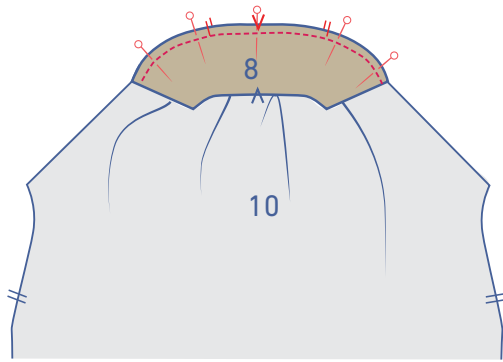
Pin and sew the front facing (7) to the front lining (9), making sure the nicks match perfectly.



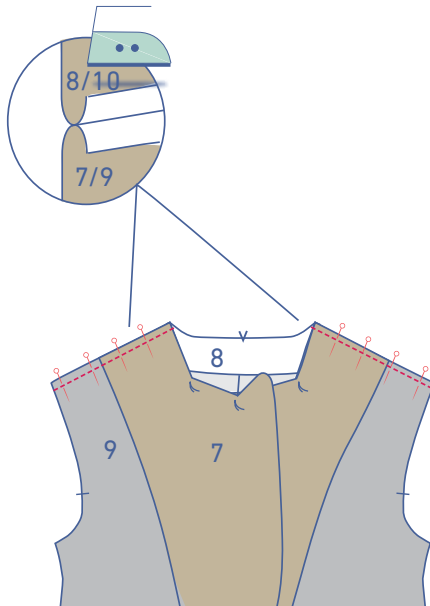
Shape a functional pleat by folding the nicks horizontally along the CB of the back lining (10) together with the right side of the fabric facing inwards. Starting at the nicks, sew a parallel line to the CB line approximately 3 cm long.



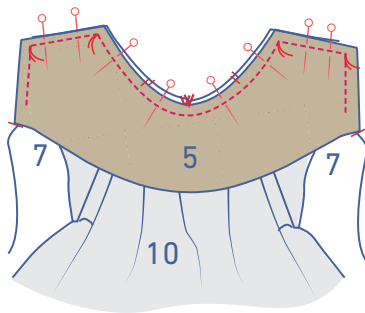
Fold the pleat allowance in half in the direction indicated.



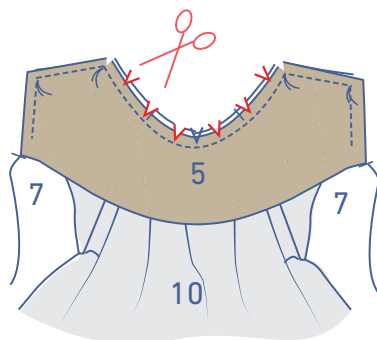
Pin the bottom of the back facing (8) to the top of the back lining with the nicks matching perfectly.

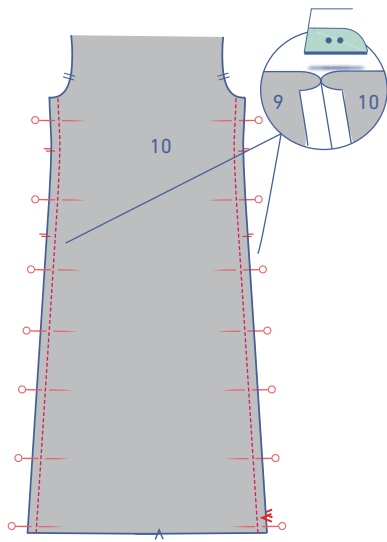


Pin and sew the shoulder seams and press open the seam allowance.



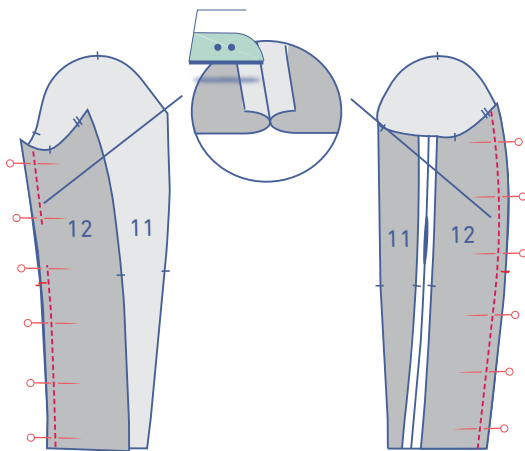
Now follow all the instructions in step 4 to sew the upper collar (5) to the coat lining.





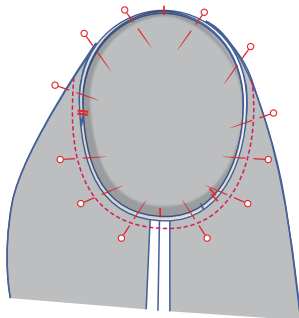
8

Pin and sew the side seams and press the seam allowance open.

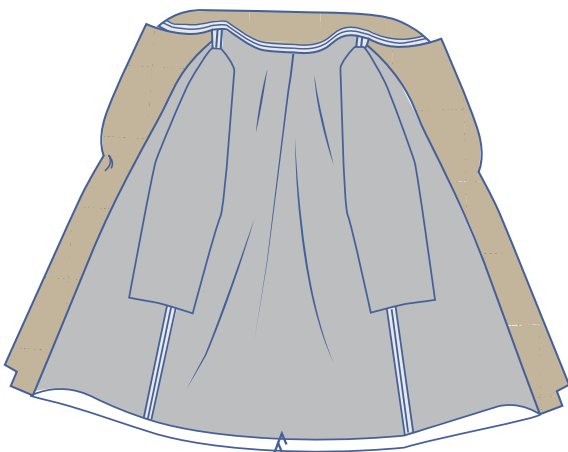


9

Follow all the instructions in step 6 to create the sleeve linings (top sleeve lining [11] and bottom sleeve lining [12]). However, leave an opening (approx 6-8 cm) in one of the sleeve linings so that you can turn the coat back the right way out.

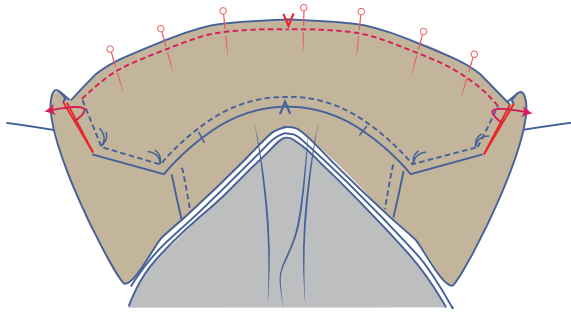


For the sleeve linings, sew the sleeve lining to the coat lining the same way you did in step 6.

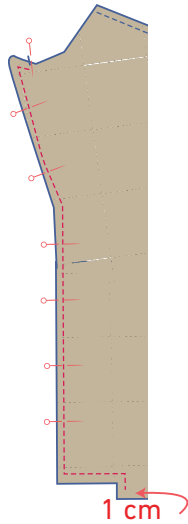


10

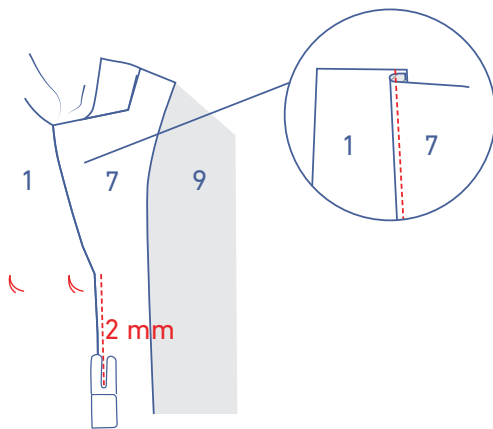
Place both coat and lining pieces with the right sides facing together.



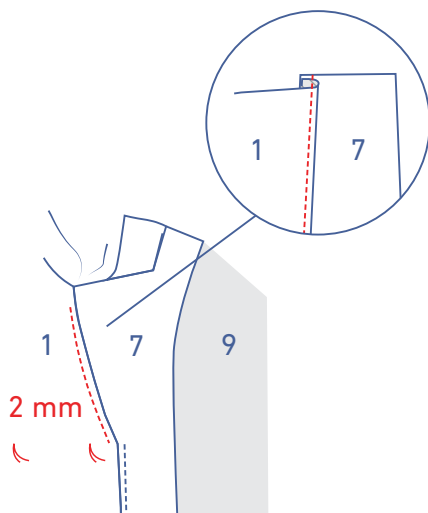
Start by sewing the collar pieces together: Pin the contours of both collars neatly together and sew in place at 1 cm (The under collar is smaller than the upper collar, but to sew, the contours must line up perfectly). When sewing the collar, lay the seam allowance of the indicated sides down or out of the way.



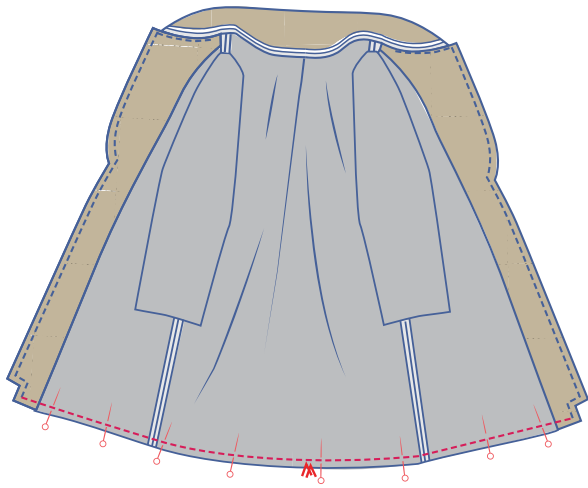
Pin and sew the lapel and the CF lines together. Start sewing the lapel from the nick to 1 cm from the raw edges of the hem. Move the seam allowance of the collar up or out of the way.



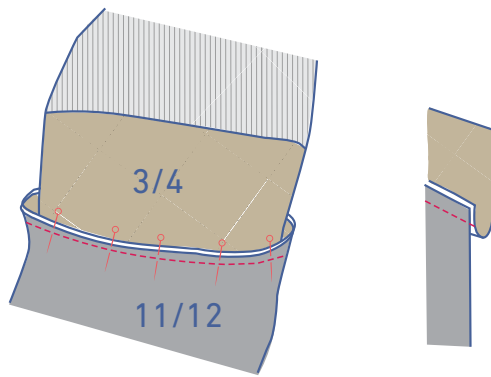
Next, turn the coat inside out. Fold the seam allowance towards the coat lining where the basting thread marks the top button. At 2mm from the edge, understitch through all layers (facing + underlying seam allowance) of the front facing up to the hem.



Fold the seam allowance above the basting thread marking the top button towards the front and understitch the front at 2mm from the edge through all layers (the front + the underlying seam allowance). Sew this as far as you can.



Turn the coat with the right side of the fabric facing inwards and sew the hems together.



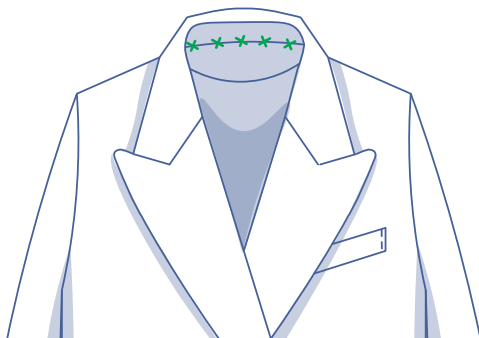
Slide the sleeve lining into the main sleeve so that everything lines up nicely. Pick up the sleeve hem and fold it onto the hem of the sleeve lining so that they're lined up with the right sides of the fabric facing each other.

Pin and sew the hems together.

11

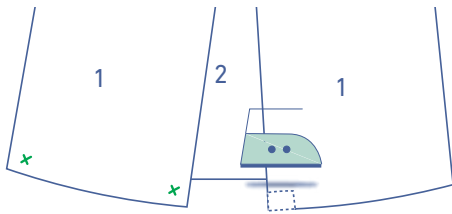
Next, turn the coat the right way out.

Hand sew or machine stitch the seam allowances on the necklines of both coats from shoulder to shoulder (along the inside of the coat, through the opening in the sleeve lining).

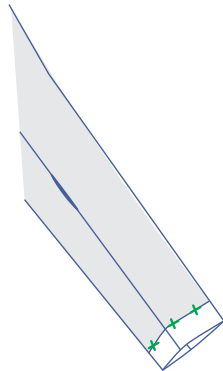


Hand sew or machine stitch the underarm seams of both coats from shoulder to shoulder (along the inside of the coat, through the opening in the sleeve lining).

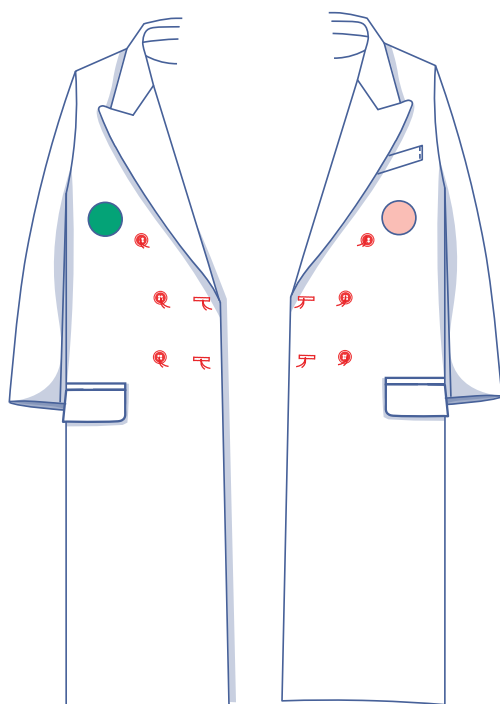
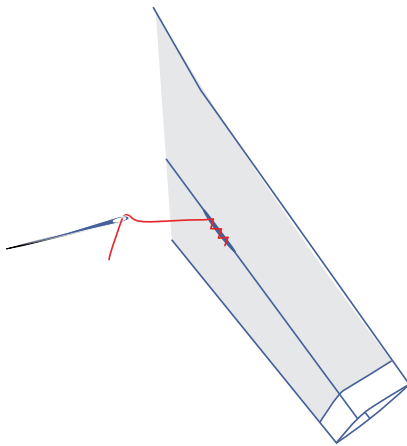




Press the seam allowance (+ the corner of the hem) over.
Hand sew or machine stitch the coat and the sleeves to
the seam allowances of the side seams/underarm seams.



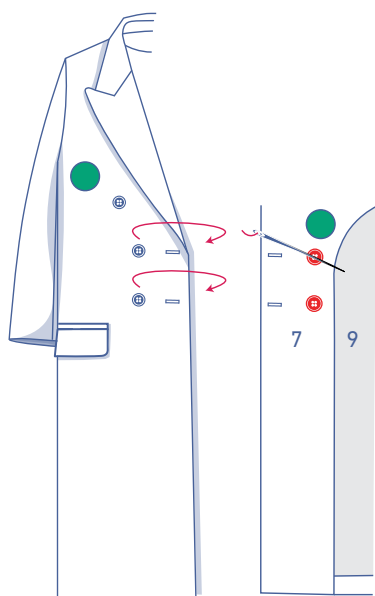
Hand sew or stitch the opening in the sleeve lining closed.



12

Sew the buttons on where indicated.
Make horizontal buttonholes based on the location of the
buttons, except for the top row of buttons (no buttonholes
are sewn for these).

Sew the buttons on where indicated.



pattern pieces & seam allowances (in cm)

To sew the garment together as described in the instructions, you must draw the illustrated seam allowances around the paper pattern pieces before cutting them out.

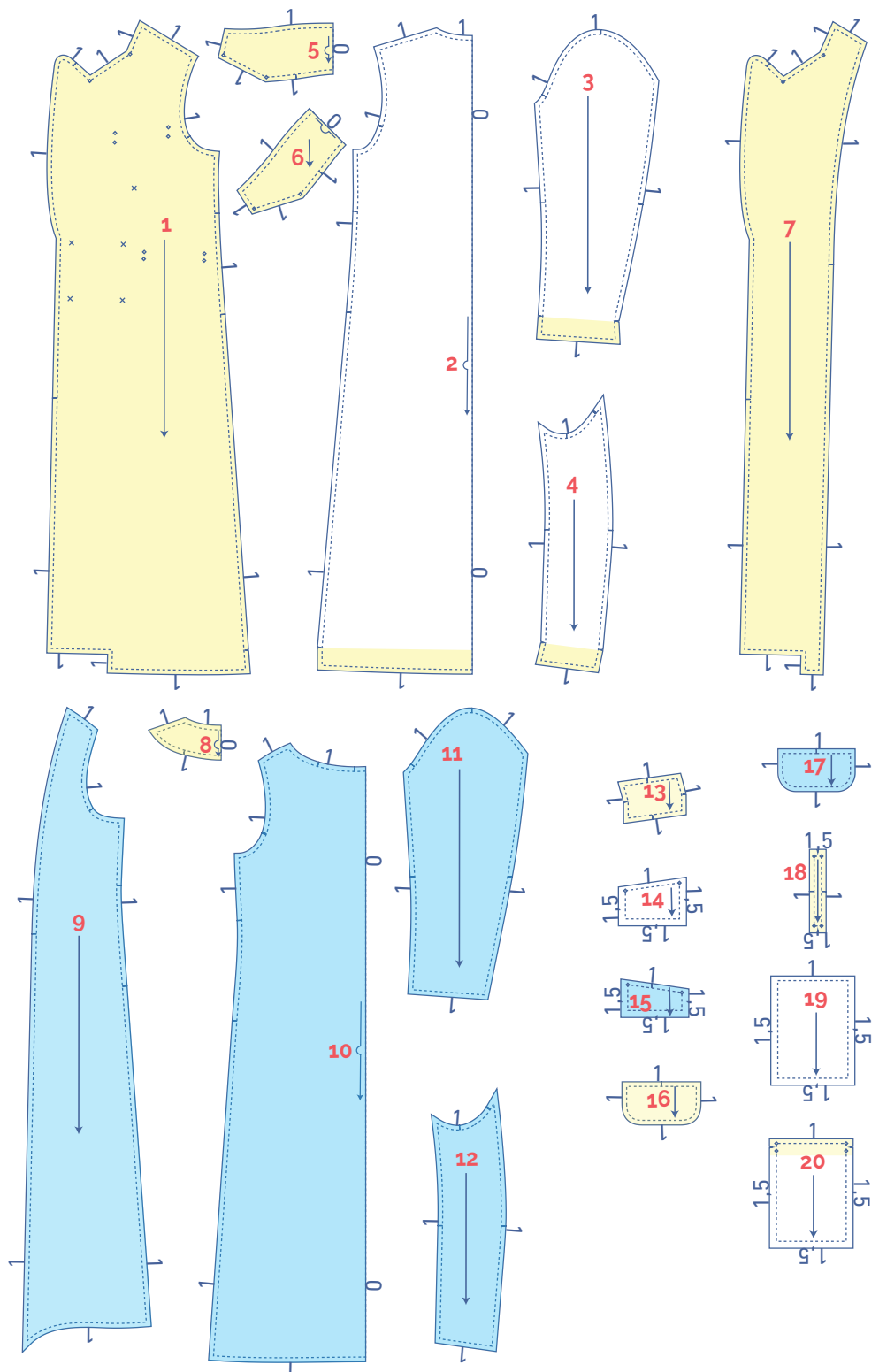
1. front: 2x
2. back: 1x on fabric fold
3. sleeve top: 2x
4. sleeve bottom: 2x
5. upper collar: 1x on fabric fold
6. under collar: 1x on fabric fold (on the bias)
7. facing front: 2x
8. facing back: 1x on fabric fold
9. FF interfacing: 2x
10. BF interfacing: 1x on fabric fold
11. top sleeve lining: 2x
12. bottom sleeve lining: 2x
13. chest pocket welt: 1x
14. pocket mouth, chest pocket: 1x
15. inner pocket bag: 1x
16. flap: 2x
17. flap lining: 2x
18. welt: 2x
19. pocket mouth: 2x
20. welt + inner pocket bag: 2x



lining



iron-on interfacing

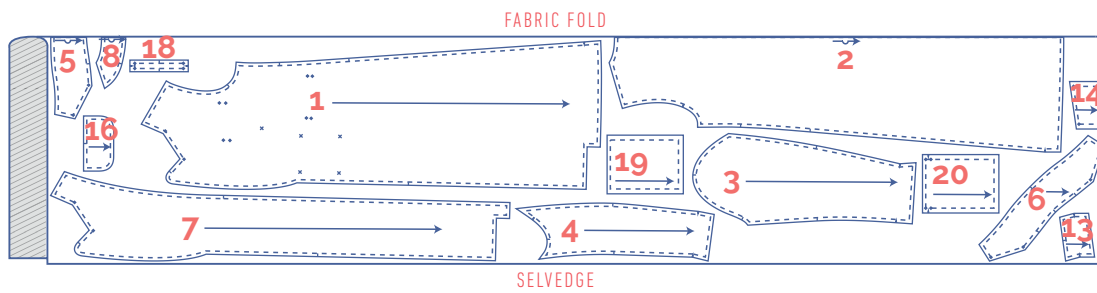


IMPORTANT

The pieces highlighted in light yellow are attached along the wrong side using iron-on interfacing.

fabric plan for fabrics 140 cm wide

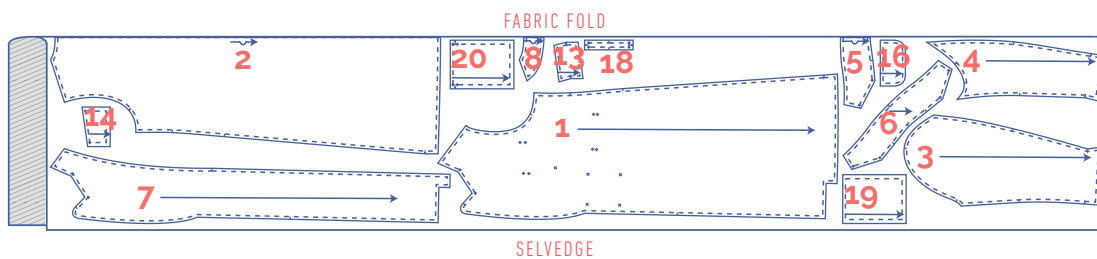
XS - M



IMPORTANT

You only need pattern pieces 6, 13 and 14 once.

L - XXXL

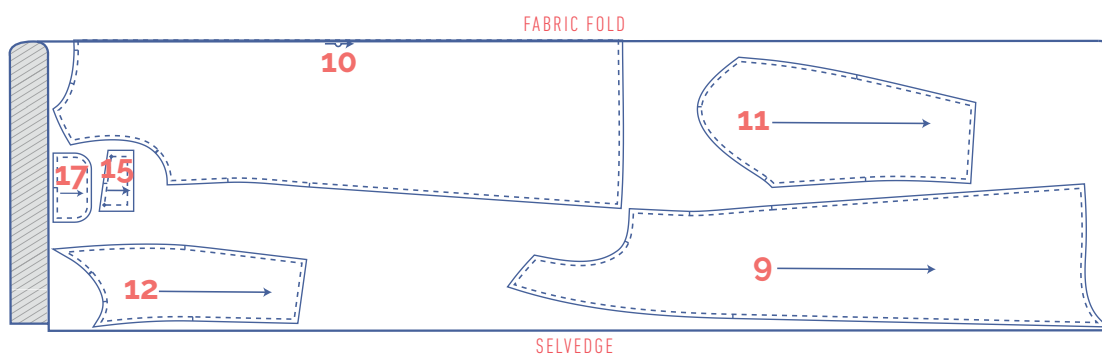


IMPORTANT

You only need pattern pieces 6, 13 and 14 once.

fabric plan for lining 140 cm wide

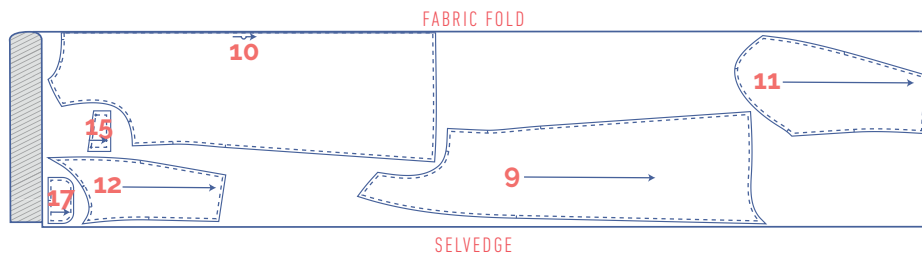
XS - L



IMPORTANT

You only need pattern piece 15 once.

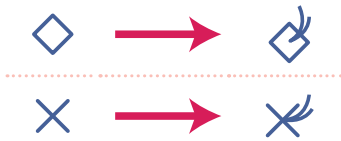
XL - XXXL



IMPORTANT

You only need pattern piece 15 once.

- Mark the following points using basting thread:



- Nick the pattern paper and fabric at the places where a single vertical line (I) and double vertical lines (II) are indicated.
- Cut a small corner out of the fabric at a V notch symbol or on the finished hemline.
- Cut a small corner (V notch) out of the pieces that lie on the fabric fold (—) to mark the middle of these pieces.