

Dagny by Fibre ⚡ood



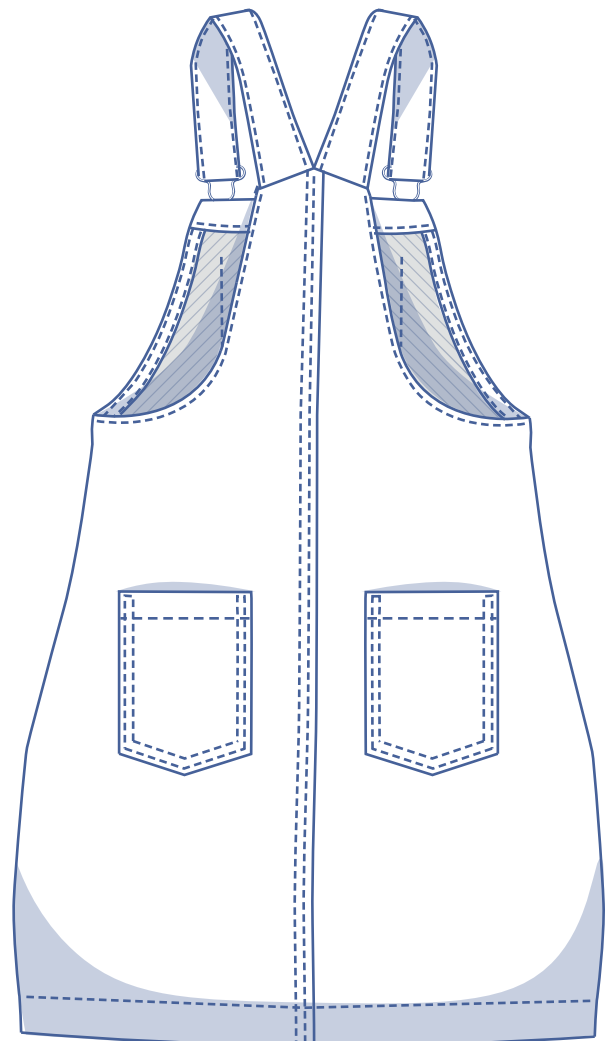
Dagny by Fibre ⚡ood

***✂✂



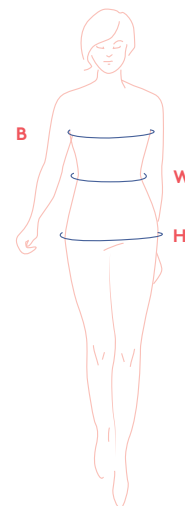
32 - 58

Dagny is a short overall dress that instantly gives those sixties vibes. It's a versatile garment that's fun to style: pair it with a turtleneck, a t-shirt or a romantic blouse like the [Victoria top](#). Make it up in a cosy corduroy or wool print such as a houndstooth and you'll make a statement. If the mini length is not for you, lengthening the Dagny is a piece of cake.



size chart

size (EU)	32	34	36	38	40	42	44	46	48	50	52	54	56	58
UK	4	6	8	10	12	14	16	18	20	22	24	26	28	30
US	0	2	4	6	8	10	12	14	16	18	20	22	24	26
B (cm)	76	80	84	88	92	96	100	104	116	122	128	134	140	146
B (inches)	29.9	31.5	33.1	34.6	36.2	37.8	39.4	40.9	43.3	45.7	48	50.4	52.8	55.1
W (cm)	66	68	70	74	78	82	84	88	94.5	101	107.5	114	120.5	127
W (inches)	26	26.8	27.6	29.1	30.7	32.3	33.1	34.6	37.2	39.8	42.3	44.9	47.4	50
H (cm)	86	90	94	97	100	103	106	109	115	120	125	130	135	140
H (inches)	33.9	35.4	37	38.2	39.4	40.6	41.7	42.9	45.3	47.2	49.2	51.2	53.1	55.1



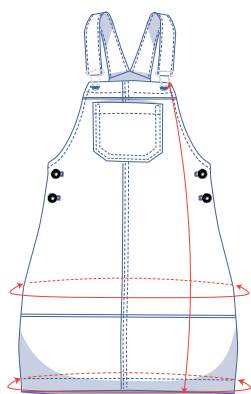
Bust (B): measure horizontally around the fullest part of the bust.

Waist (W): measure horizontally at the narrowest point of the waist.

Hip (H): measure horizontally around the widest part of the lower body.

Choose your size based on your hip measurement.

finished garment measurements (in cm)



This chart's measurements are based on the fabric type and serve as a reference. Ease has been added to the width measurements (on top of the exact body measurements) for a more comfortable fit and to achieve a particular cut (fitted, loose or oversized). Depending on your preferred cut, you could choose to size up or down accordingly.

size	32	34	36	38	40	42	44	46	48	50	52	54	56	58
length front	75.75	76.25	76.5	77	77.25	77.5	80	80.25	83.5	84	84.5	85.25	85.75	86.5
hips	91.5	95.5	99.5	103.5	107.5	111.5	115.5	119.5	125.75	131.75	137.75	143.75	149.75	155.75
hem circumference	99.5	103.5	107.5	111.5	115.5	119.5	123.5	127.5	133.75	139.75	145.75	151.75	157.75	163.75

Compare the stated lengths to the measured or desired lengths. **Lengthen** or **shorten** the dress by cutting the pattern pieces at the place(s) indicated by a double line on the drawing above and then spreading the pattern pieces out X cm from each other or overlapping them, where necessary. Make sure that the CF and CB lines and the side seams are always straight.



IMPORTANT

Adjust the fabric amount based on these alterations.

supplies



- Thread
- Iron-on interfacing: max. 25 cm
- Jeans button (Ø 2 cm): 6
- Overalls buckle (width 4 cm) 2
- Adjustable buckle (width 4 cm): 2
- Bias tape: see table
- Fabric: see table

bias tape (in cm)	32	34	36	38	40	42	44	46	48	50	52	54	56	58
length front	50	51	52	53	54	56	57	58	61	64	66	68	71	73
length back	66	68	70	72	74	76	78	80	85	88	91	94	97	101
total length	116	119	122	125	128	132	135	138	146	152	157	162	168	174

fabric used (in cm) F collection	32	34	36	38	40	42	44	46	48	50	52	54	56	58
corduroy fabric width 142 cm	120	120	120	120	145	150	155	160	165	165	165	165	165	165

Discover the Fibre Mood fabric collection and the accompanying fabric layouts [here](#)
or on www.fibremood.com/en/fabrics.

fabric used (in cm) standard	32	34	36	38	40	42	44	46	48	50	52	54	56	58
fabric width 140 cm	120	120	120	120	145	150	155	160	165	165	165	165	165	165

The corresponding fabric plan can be found on the last page of these sewing instructions.

fabric advice











Make up the Dagny dress in denim or corduroy for a casual on-trend look. You could also choose a printed wool suiting or faux leather. Options galore!

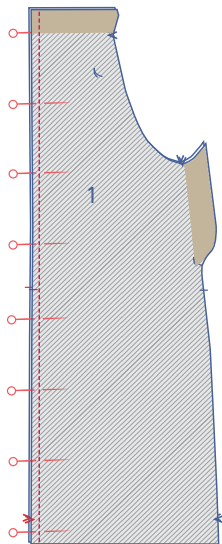
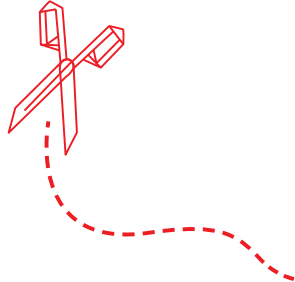
sewing instructions



The method used to finish the garment will depend on your chosen fabric. The pieces are always sewn together with right sides facing, unless stated otherwise.

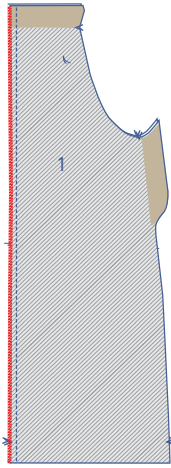


F	front	
B	back	
RF	right front	
LF	left front	
CF	centre front	
CB	centre back	
RBP	right back piece	
LBP	left back piece	
	right side	
	wrong side	
	iron-on interfacing	

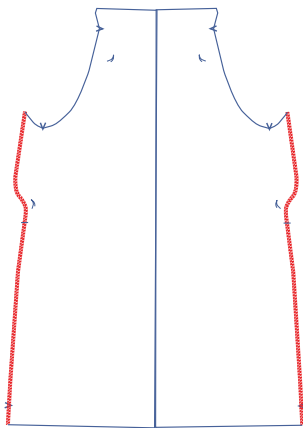


1

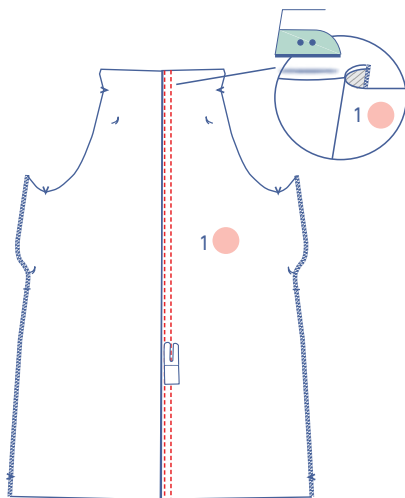
Pin and sew the CF seam of the front (1) together.



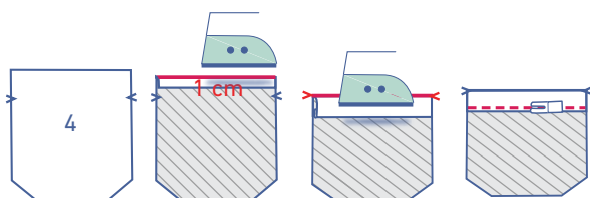
Finish the raw edges together with overlock stitching.



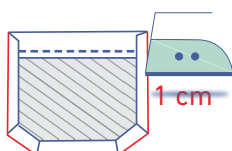
Finish the edges of the sides with overlock stitching too.



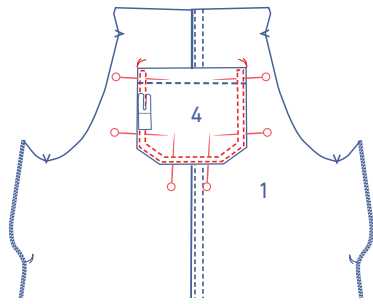
Press the seam allowance of the CF seam towards the LF. Now make two rows of top-stitching on the LF next to the seam at presser foot width.



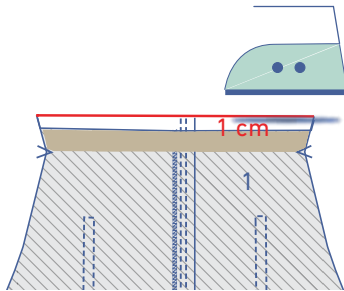
Press the top of the front pocket (4) 1 cm onto the wrong side and press a second time, this time at the V notches. Sew into place right next to the edge.



Press the remaining edges 1 cm onto the wrong side.

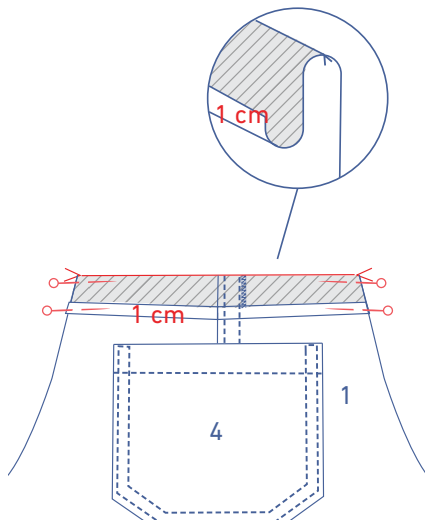


Pin the pocket to the front at the indicated place. Sew into place right next to the edge. Top stitch next to the first line of stitching at presser foot width. Finish with horizontal reinforcement stitching between the two lines of top-stitching.

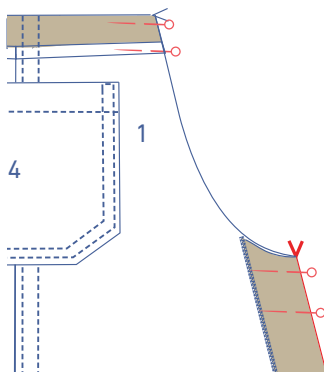


2

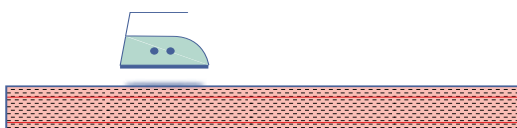
Press the long side of the self-facing 1 cm over to the wrong side.



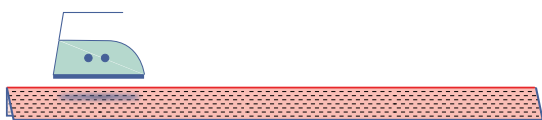
Now fold the self-facing over on itself with right sides facing, at the V notch. Pin in place.



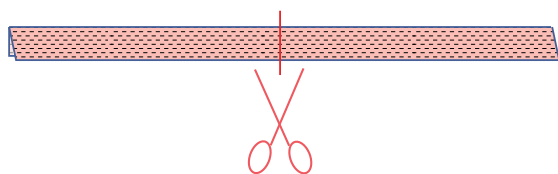
Fold the self-facing of the side seam at the V notch, over onto itself with right sides together. Pin in place.



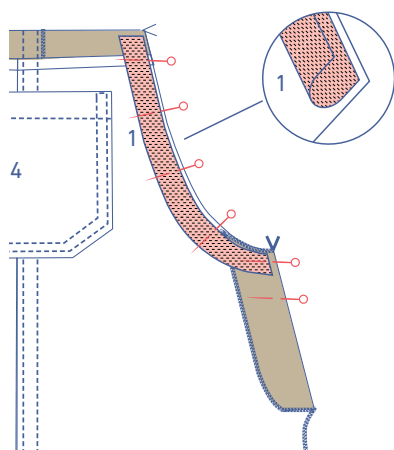
Press out the pre-pressed fold lines on the bias tape front.



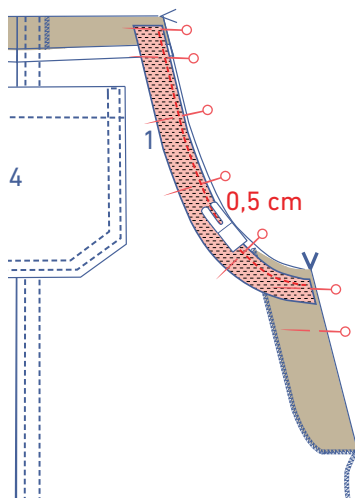
Then press the bias tape front in half lengthwise with the right side facing out.



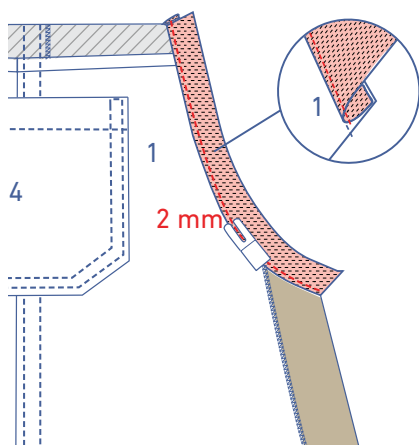
Cut the bias tape front down the middle, making 2 equal sections.



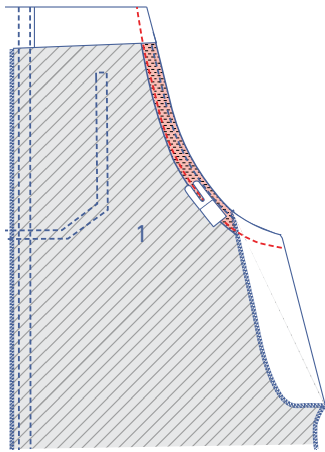
Pin both raw edges of the bias tape to the armhole along the right side of the work piece. The bias tape should be lying on top of the folded facings.



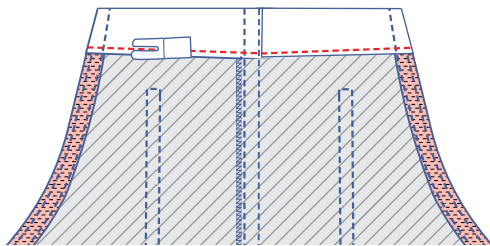
Sew into place at 0.5 cm.



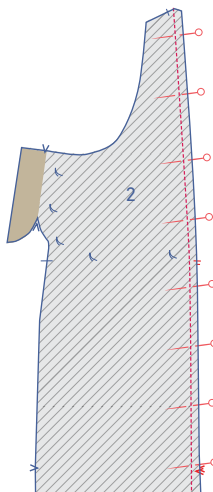
Fold the bias tape and the seam allowance away from the garment and understitch the tape in place at 2 mm from the seam through all layers (= the bias tape + the seam allowance underneath).



Fold the bias tape all the way over onto the wrong side, while turning the shaped facings the right way out. Sew everything into place along the edge of the bias tape. Continue sewing across the facings.

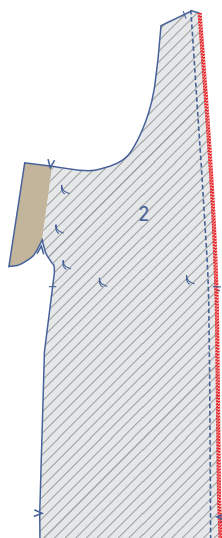


Sew the facing into place to the top of the front right next to the folded edge.

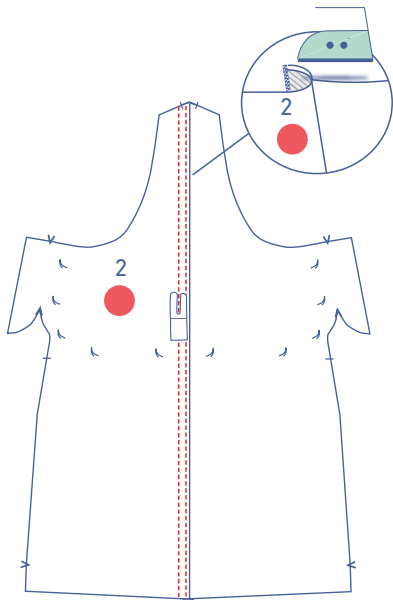


3

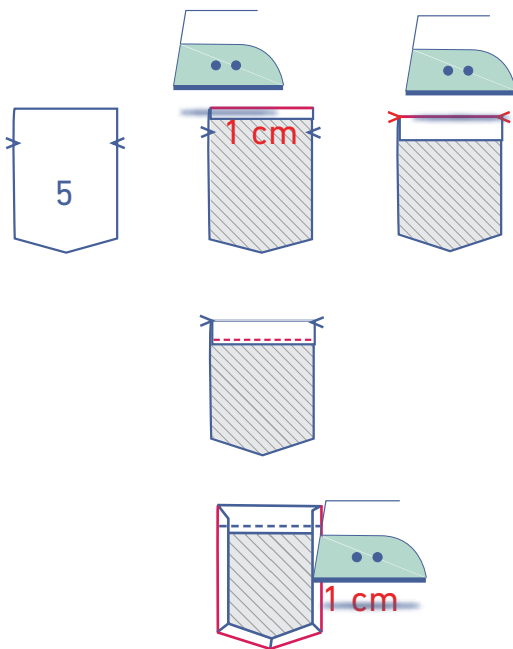
Pin and sew the CB seam of the back (2).



Finish the raw edges together with overlock stitching.

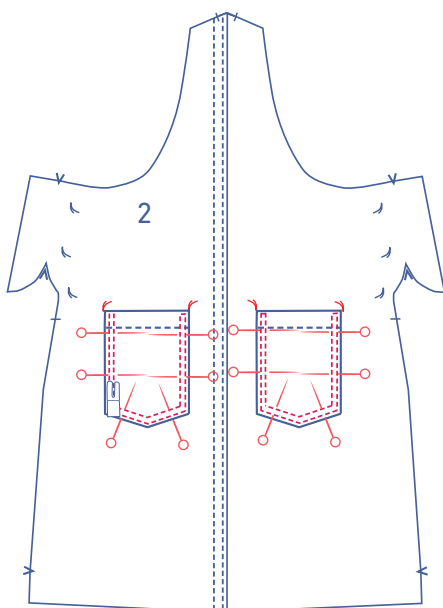


Press the seam allowance of the CB seam towards the LB. Now make two rows of top-stitching on the LB next to the seam at presser foot width.

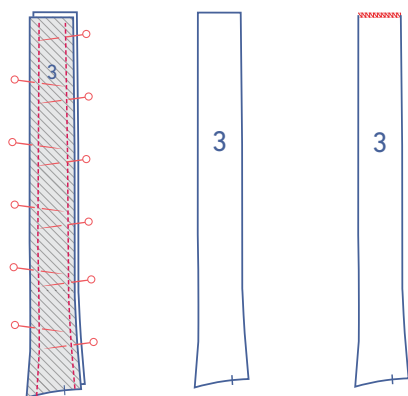


Press the top of the pockets (5) 1 cm onto the wrong side and press a second time, this time at the V notches. Sew into place right next to the edge.

Press the remaining edges 1 cm onto the wrong side.



Pin the pockets to both back pieces at the indicated place. Sew into place right next to the edge. Top stitch next to the first line of stitching at presser foot width. Finish with horizontal reinforcement stitching between the two lines of top-stitching.

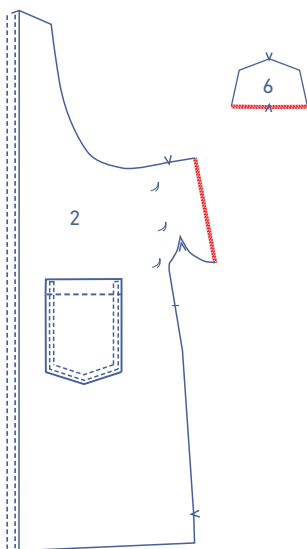


4

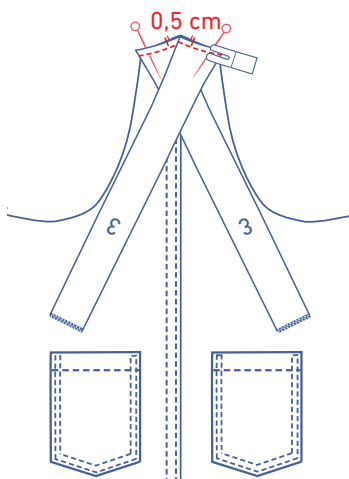
Pin and sew the sides of both shoulder straps (3) together.

Turn the right way out.

Finish the top of the shoulder straps with overlock stitching.

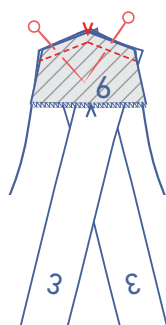


Finish the side of the back's self-facing and the bottom of the facing back (6) with overlock stitching.

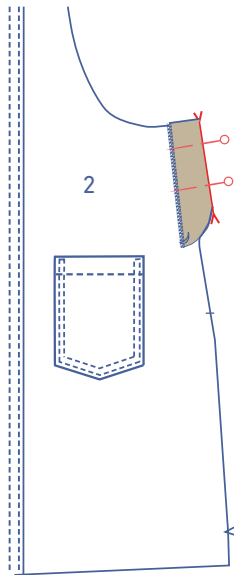


5

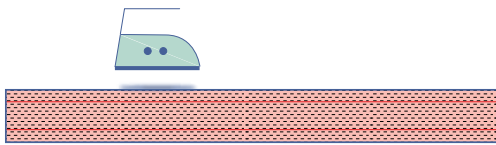
Pin the bottom of the shoulder straps at the top of the back with the nicks matching. Sew into place at 0.5 cm from the raw edge.



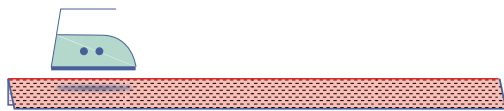
Pin and sew the top of the back facing to the top of the back.



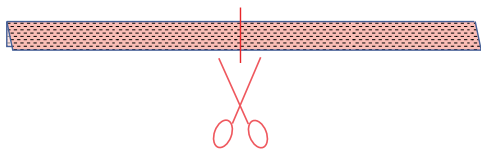
At the V notch, fold the self-facing over onto itself towards the back with the right sides together. Pin into place.



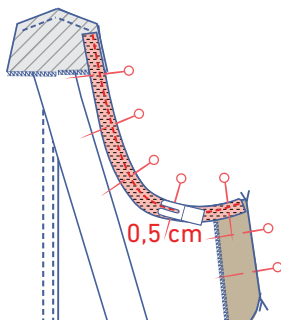
Press out the pre-pressed fold lines on the bias tape back.



Then press the bias tape back in half lengthwise with the right side facing out.

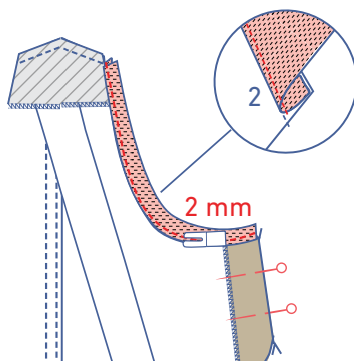


Cut the bias tape back down the middle, making 2 equal sections.

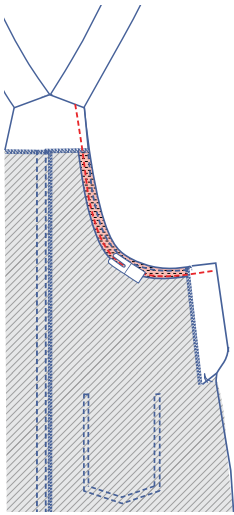


Pin both raw edges of the bias tape to the armhole along the right side of the work piece. The bias tape should be lying on top of the facings.

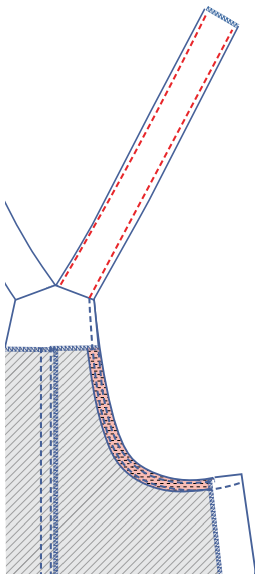
Sew into place at 0.5 cm.



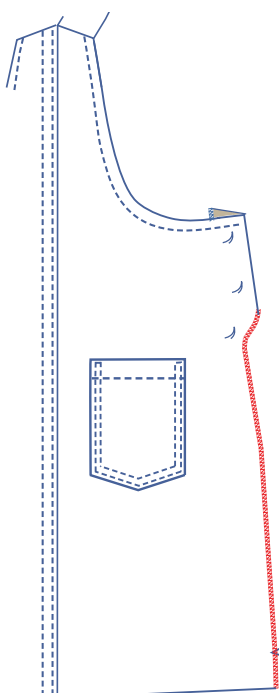
Fold the bias tape and the seam allowance away from the garment and understitch the tape in place at 2mm from the seam through all layers (= the bias tape + the seam allowance underneath).



Fold the bias tape all the way over onto the wrong side, while turning the self-facings the right way out. Sew everything into place along the edge of the bias tape. Continue sewing across the facings.

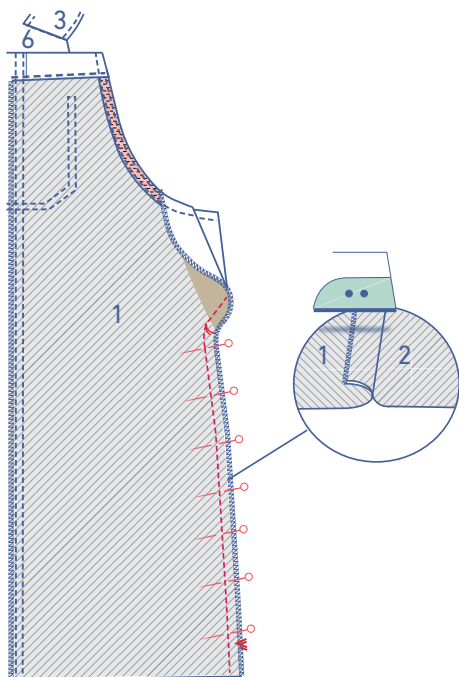


Finish the stitching, top-stitching the sides of the shoulder straps.

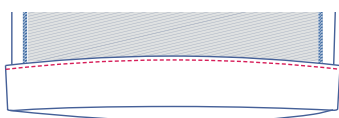
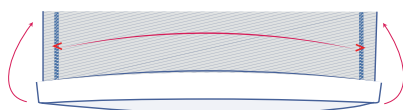
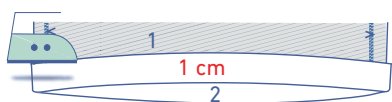


6

Finish the side seams of the back (with the folded self-facing) with overlock stitching.



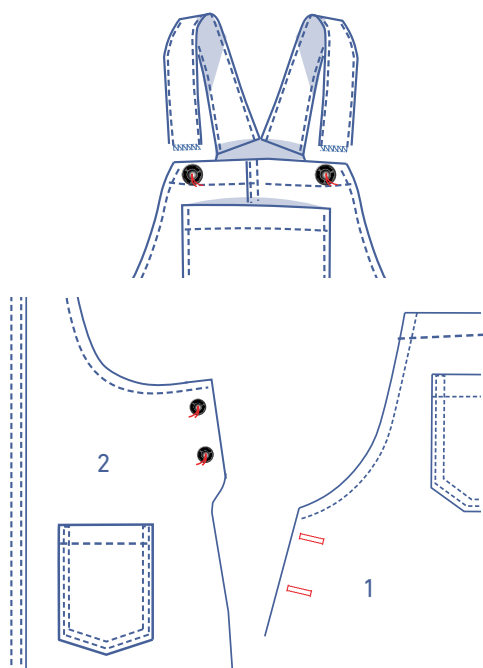
Pin and sew the side seams of the front and back towards the basting thread. From there, sew at an angle towards the edge of the shaped facing. Press the seam allowance and the facings towards the front.



7

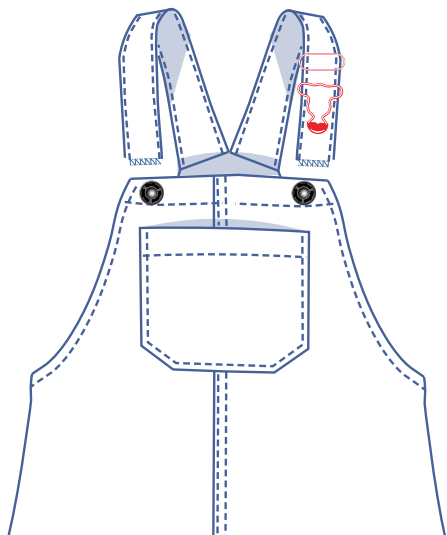
Press the hem 1 cm onto the wrong side and press a second time, this time to the V notches.

Sew into place right next to the edge.



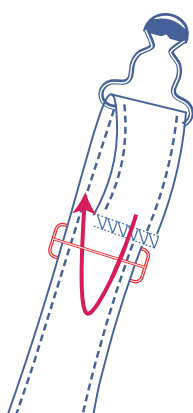
8

Attach the jeans buttons at the indicated places. Make horizontal buttonholes on the front based on the location of the jeans buttons.

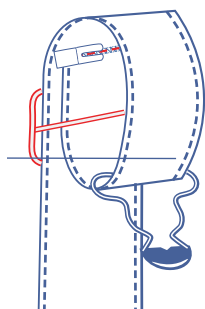


9

Pull the shoulder strap through the adjustable overall buckle.



Pull the end of the shoulder strap further and slide it through the underside of the adjustable buckle.



Fold the end of the shoulder strap over the bar of the adjustable buckle. Sew into place at the overlock stitching.

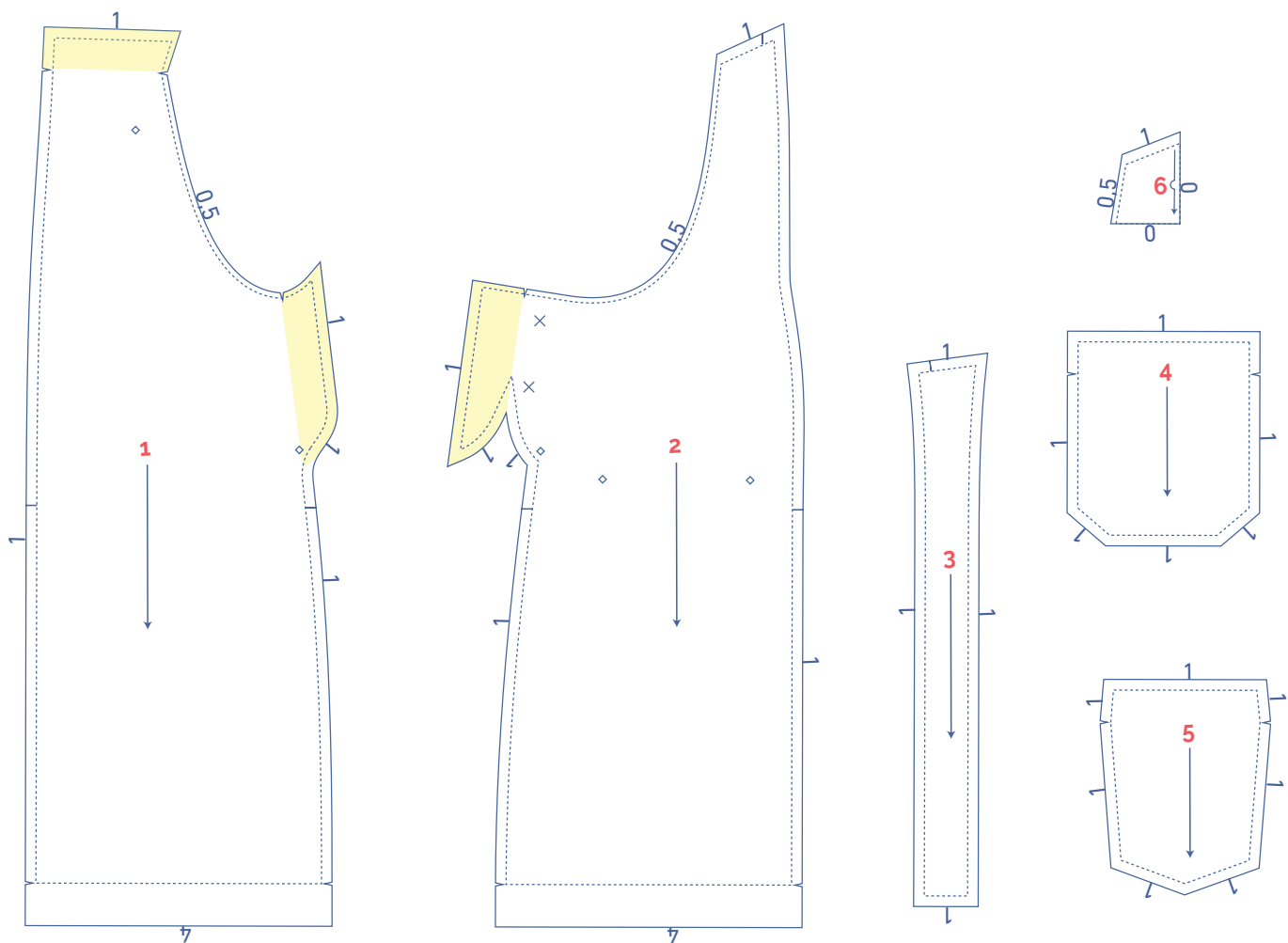
pattern pieces & seam allowances (in cm)

To sew the garment together as described in the instructions, you must draw the illustrated seam allowances around the paper pattern pieces before cutting them out.

1. front: 2x
2. back: 2x
3. shoulder strap: 4x
4. chest pocket: 1x
5. pocket: 2x
6. facing back: 1x on fabric fold

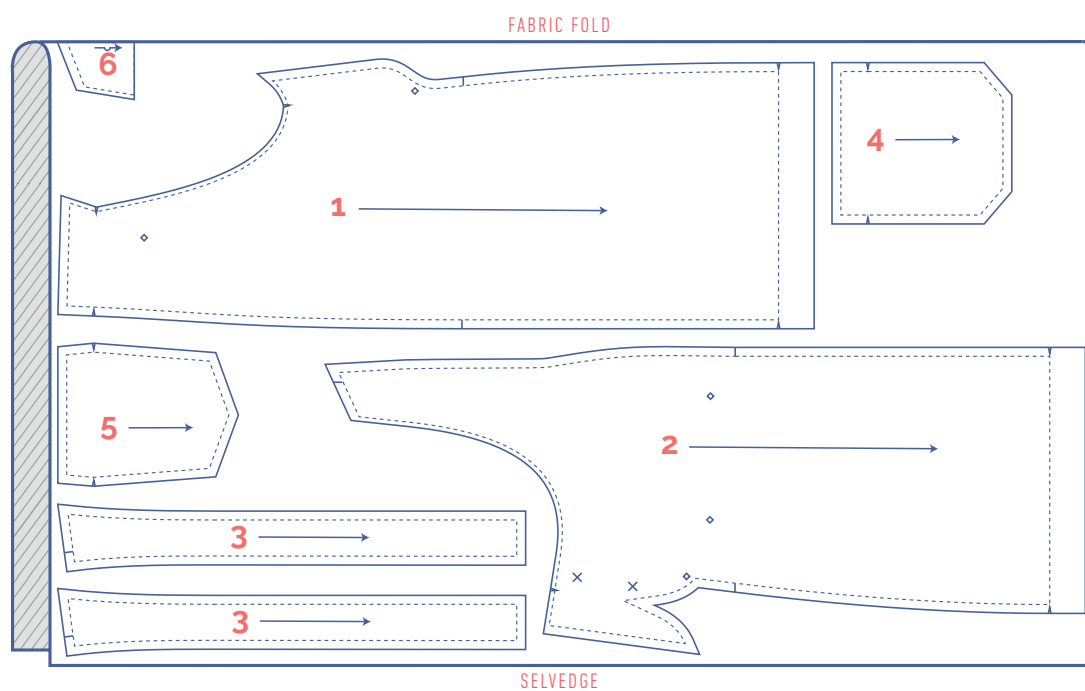
IMPORTANT

The pieces highlighted in light yellow are attached along the wrong side using iron-on interfacing.



fabric plan for fabrics 140 cm wide

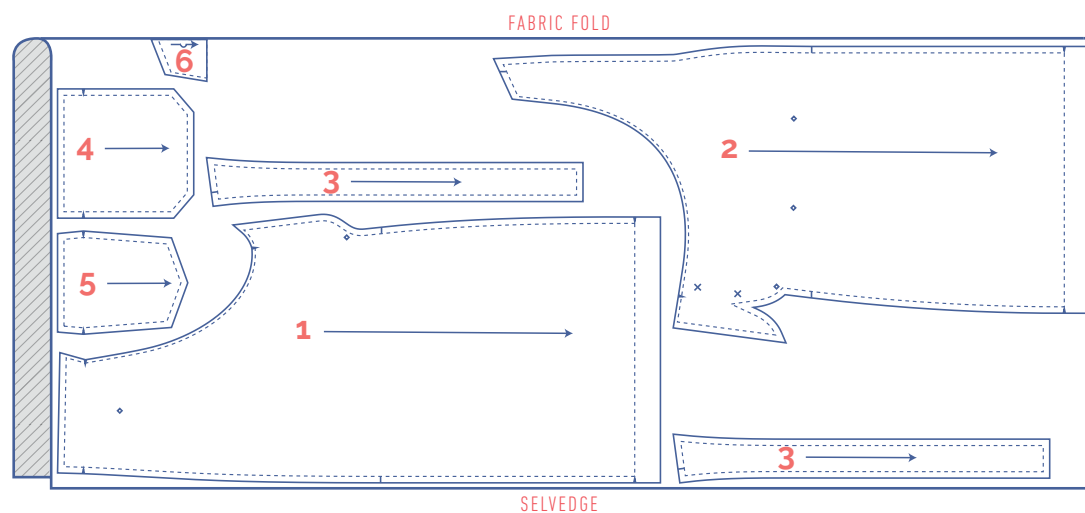
32 - 36



IMPORTANT

You only need pattern piece 4 once.

38 - 58

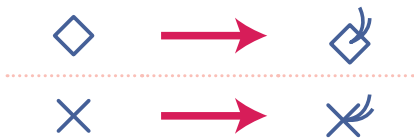


IMPORTANT

You only need pattern piece 4 once.

marking pattern pieces after cutting

- Mark the following points using basting thread:



- Nick the pattern paper and fabric at the places where a single vertical line (I) and double vertical lines (II) are indicated.
- Cut a small corner out of the fabric at a V notch symbol or on the finished hemline.
- Cut a small corner (V notch) out of the pieces that lie on the fabric fold (—) to mark the middle of these pieces.