

River by Fibre ⚡ood



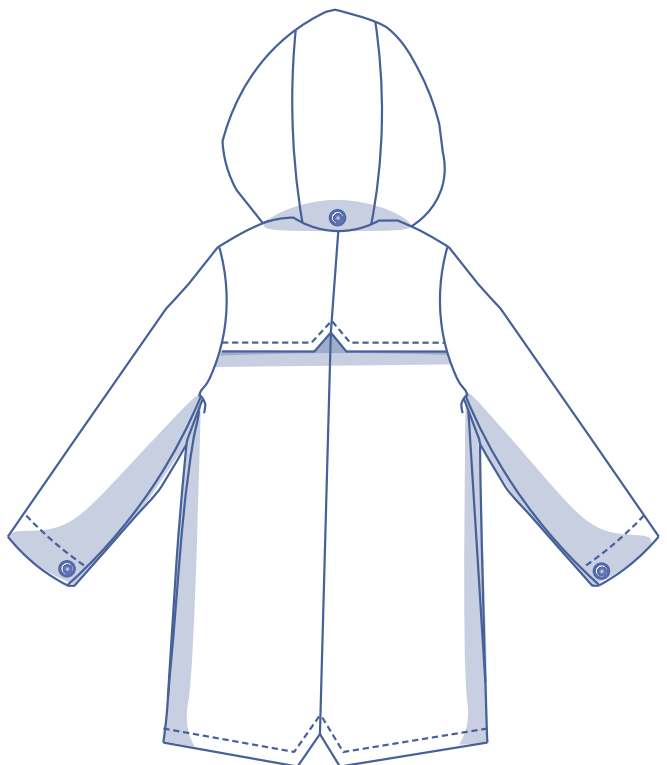
River by Fibre Mood



2 - 14 years

I'm singin' in the rain...and splashin' through the puddles!
River is a must-sew waterproof parka made out of raincoat fabric.

The detachable hood is an added bonus for rainy days.
River features two convenient pockets and can be closed
in a flash with handy snaps. You could even make
this pattern in cotton for a retro 'parka' look

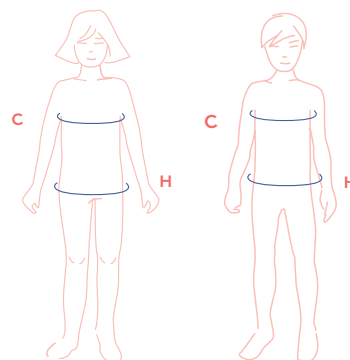


size chart

size (age)	2	3	4	5	6	8	10	12	14
C (cm)	52	54	56	58	60	64	68	72	76
C (inches)	20.5	21.3	22	22.8	23.6	25.2	26.8	28.3	29.9
H (cm)	56	58	60	62	64	68	72	76	80
H (inches)	22	22.8	23.6	24.4	25.2	26.8	28.3	29.9	31.5

Chest (C): measure horizontally around the widest part of the chest.

Hips (H): measure horizontally around the widest part of the lower body.



finished garment measurements (in cm)

This chart's measurements are the pattern measurements based on the fabric type and serve as a reference. Ease has been added to the width measurements (in addition to the exact body measurements) for a more comfortable fit and to achieve a particular cut (fitted, loose, oversized). Depending on what you prefer, you can go a size smaller or larger than the 'right' size according to the size chart.



size (year)	2	3	4	5	6	8	10	12	14
length	50	53.25	56.5	59.5	62.75	69	75.25	81.5	87.75
sleeve length*	40	44.5	47.5	50.25	52	56.25	61	66	70.75
chest	69	71	73	75	77	81	85	89	93
hem circumference	75.75	78.25	80.5	83	85.5	90	94.75	99.25	103.75
hem circumference sleeve	22.75	23.25	23.75	24.25	24.75	25.25	26.75	28.25	29.75

* Including the shoulder length.

Compare the stated lengths to the measured or desired lengths. **Lengthen** or **shorten** the coat and/or sleeves by cutting the pattern pieces at the indicated double lines and then spreading the pattern pieces out X cm from each other or overlapping them where necessary. Make sure that the CF and CB lines and the side seams are always straight.



IMPORTANT

Adjust the amount of fabric to be used based on these alterations.

fabric advice



Make the River coat in a coated fabric or waterproof raincoat fabric. Cotton twill is your best bet if you're thinking of making the coat in a parka style. However, keep in mind that you'll need to make a few alterations for the finishes. Find out all the facts about the Fibre Mood fabric collection and the accompanying fabric layouts [here](https://www.fibre mood.com/en/fabrics) or on www.fibre mood.com/en/fabrics.

supplies



- Thread
- Iron-on interfacing: max. 45 cm
- Snaps (Ø 1.5 cm): 12 (sz 2 – 4y), 13 (sz 5 – 6y), 14 (sz 8 – 10y) 15 (sz 12 – 14y)
- Double-sided tape (for taping seams)
- Lining fabric: max. 40 cm
- Fabric: see table

fabric used (in cm) F collection	2	3	4	5	6	8	10	12	14
blue raincoat fabric fabric width 147 cm	110	115	120	125	130	145	170	175	185

Discover the Fibre Mood fabric collection and the accompanying fabric layouts [here](https://www.fibre mood.com/en/fabrics) or on www.fibre mood.com/en/fabrics.

fabric used (in cm) standard	2	3	4	5	6	8	10	12	14
fabric width 140 cm	110	115	125	130	155	165	170	180	190

The corresponding fabric layout can be found on the last page of these sewing instructions.

sewing instructions



The method used to finish sewing the garment depends on the fabric used, i.e., raincoat fabric or coated fabric. This fabric doesn't fray, so there's no need for overlocking. However, if you do use a fabric that frays, be sure to overlock the raw edges.

Pins don't work well with raincoat fabric. Instead, use sewing clips or paper clips. If you end up using pins anyway, be sure to only pin in the seam allowance.

Use a Teflon presser foot or stick tape to the bottom of the presser foot to allow it to slide over the fabric easily.

Use a press cloth when pressing to avoid overheating the fabric.

The pieces are always sewn together with right sides facing, unless stated otherwise.

F front

B back

RF right front

LF left front

CF centre front

CB centre back

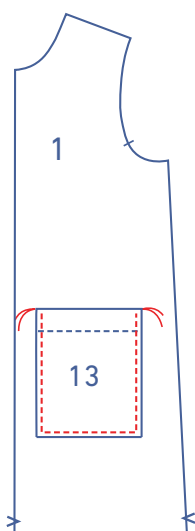
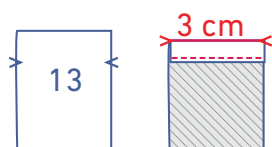
 right side

 wrong side

 lining right side

 lining wrong side

 iron-on interfacing

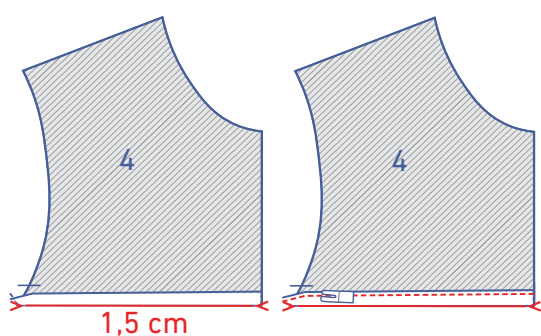


1

Press the top of the pocket (13) over at the V notches towards the wrong side. Sew into place right next to the edge.

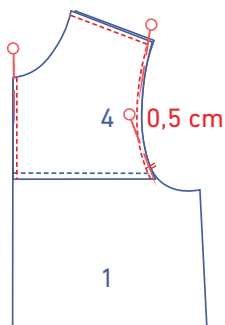
Press the seam allowance of the remaining three sides onto the wrong side.

Use double-sided tape to attach the pocket to the position indicated on the front (1). Sew into place right next to the edge.

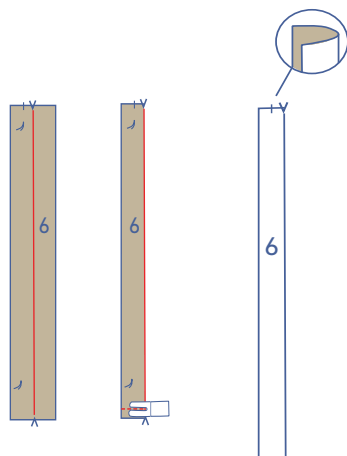


2

Press or tape the bottom of the front shoulder piece (4) onto the wrong side. Sew into place at presser foot width from the edge

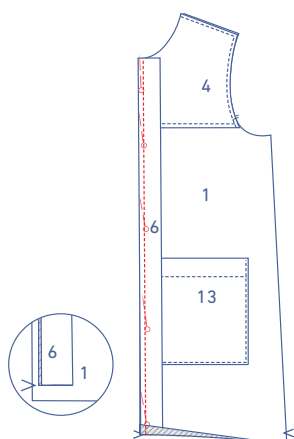


Pin the front yoke piece to the front with the corresponding markings matching. Sew both pieces together at the CF, the shoulder and the armhole, 0.5 cm away from the raw edges.

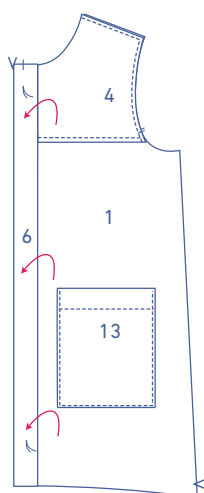


3

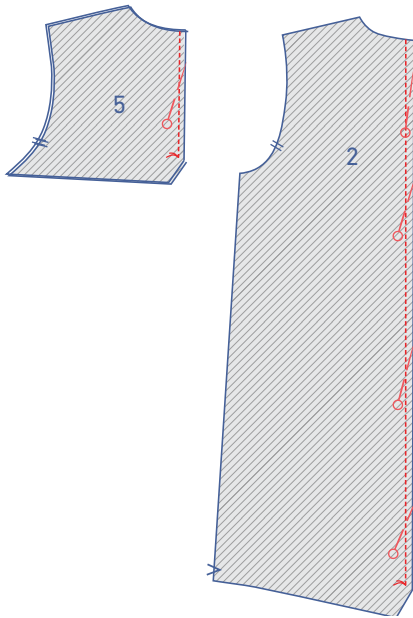
Fold the placket (6) in half on the fold line with the right side of the fabric facing inwards. Sew the short end across the bottom. Turn the right way out.



Pin and sew both raw edges of the placket to the CF along the right side of the garment. The finished edge of the placket should line up with the front V notch that marks the finished hem. At the V notch, fold the hem back over the placket with the right side facing inwards.

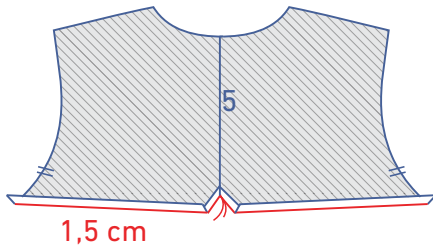


Next, fold the placket up and over and turn the hem back over to the wrong side. You may want to secure the placket seam allowance with some tape.

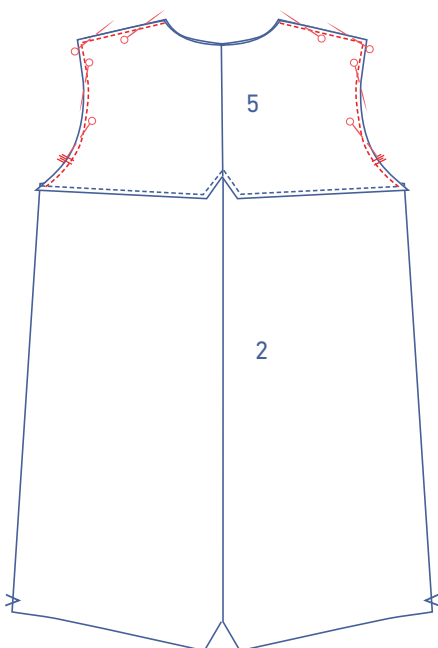
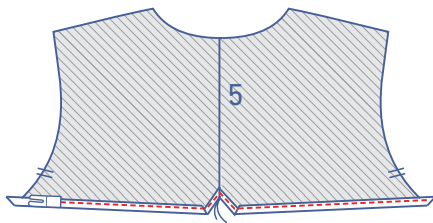


4

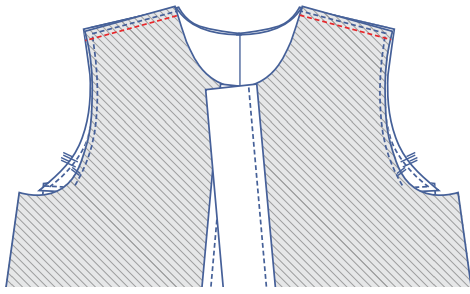
Pin and sew the CB seam of the back (2) and the back yoke piece (5) to the basting.



On the back yoke, press or tape the seam allowance onto the wrong side all along the bottom. Sew into place right next to the edge.

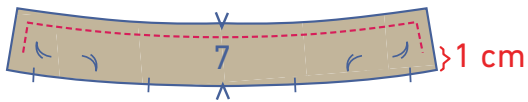


Pin the back yoke to the back (2) with the corresponding markings matching. Sew both pieces together at the shoulder and the armhole, 0.5 cm away from the raw edges.



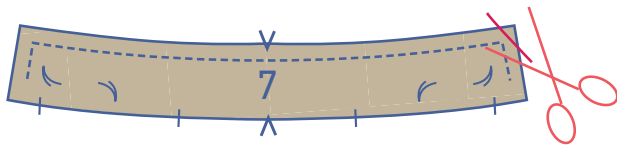
5

Pin and sew the shoulder seams. Press or tape open the seam allowance.

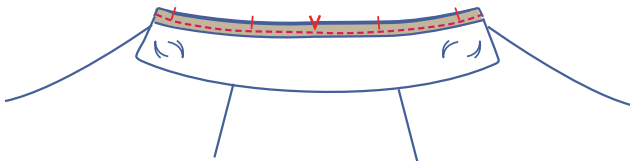


6

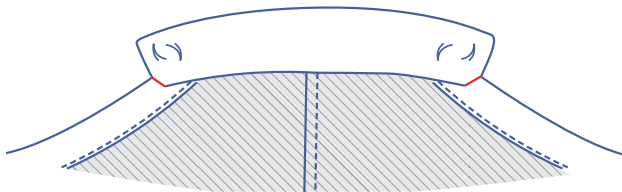
Pin and sew both collar pieces (7) together with the right sides matching. Start and finish 1 cm away from the bottom of the collar.



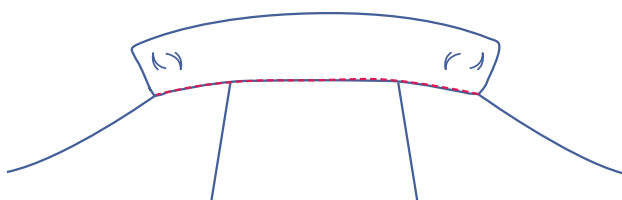
Grade and trim the seam allowance in the corners. Turn the collar inside out.



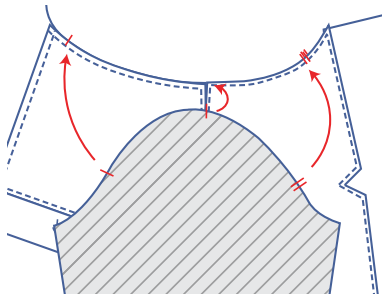
Pin and sew 1 raw edge of the collar to the neckline along the right side of the coat.



Fold the collar up and smooth the inside of the collar neatly flat. Tape or pin in place. At the CF, keep folding a small bit of the fabric over so that the seam allowance is no longer visible on the right side.

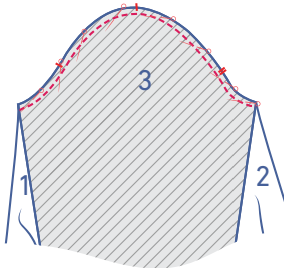


Stitch in the ditch along the right side of the garment.

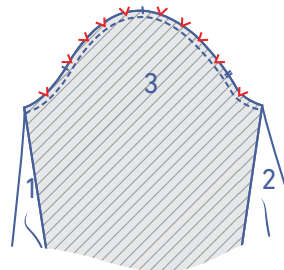


7

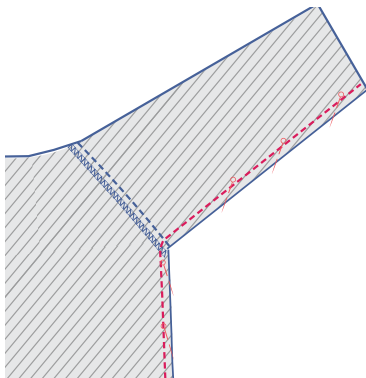
Pin the top of the sleeve (= the sleeve cap) (3) to the armhole with the corresponding markings matching. The single nick marks the front, while the double nicks mark the back. The single nick at the top should be perfectly aligned with the shoulder seam.



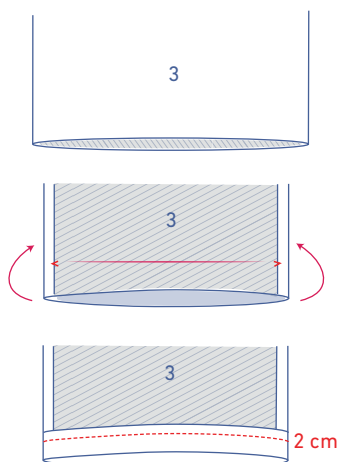
Grade the seams to create a smooth curve.

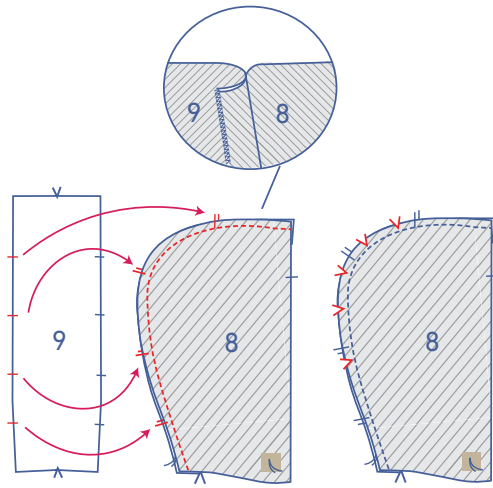


Fold the sleeve and the coat in half with the right side of the fabric facing inwards. Pin and sew the side and underarm seams.



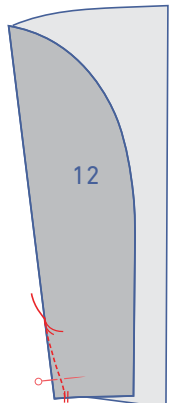
Press the sleeve hem at the V notches on the wrong side. Sew into place right next to the edge.



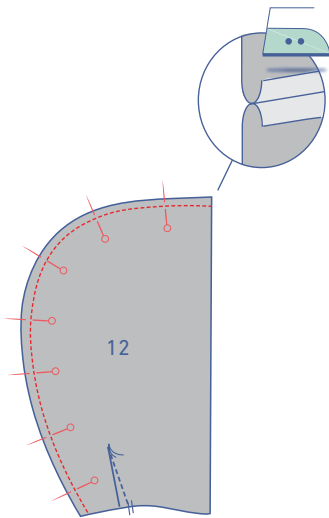


8

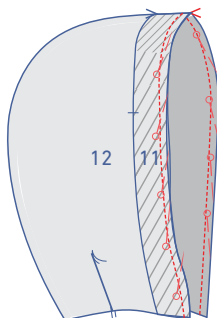
Pin and sew the hood pieces (8) to the hood center band (9) with the corresponding nicks matching. Grade the seams to create a nice curve. Press or tape the seam allowance towards the center band.



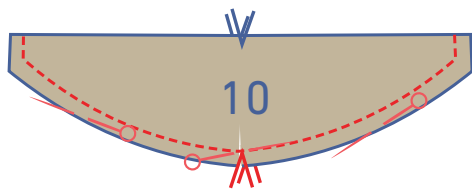
Fold the nicks at the bottom of the hood lining (12) together with the right side of the fabric facing inwards. Sew the dart at a slight angle and towards the basting thread. Stitch up to and just past the basting thread, so that you've sewn past the fabric. Snip the threads and make a knot.



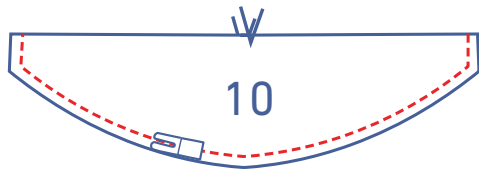
Pin and sew both hood lining pieces together. Press open the seam allowance.



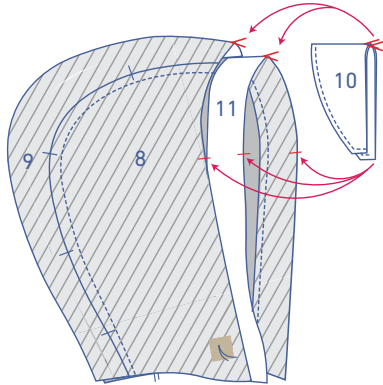
Pin and sew the hood lining to the hood facing (11) with the double nicks matching. The V notch on the facing should line up with the seam of the hood's lining.



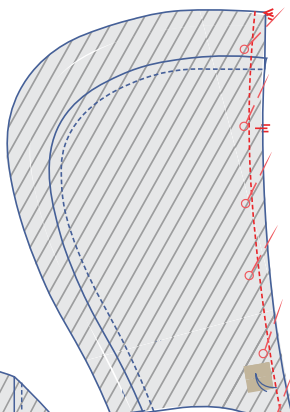
Pin and sew the curved edge of the hood's visor pieces (10) with the right sides matching.



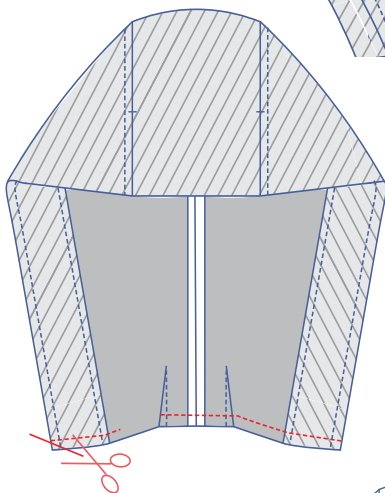
Next, turn the visor right side out. Top stitch around the edge at presser foot width.



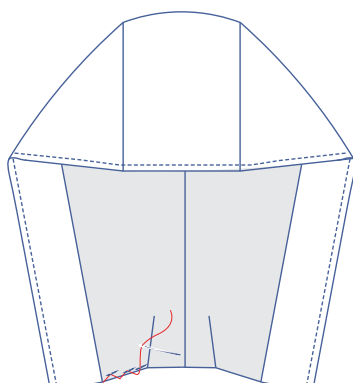
Place the edge of the hood lining on top of the hood with the right sides facing. Slide the visor between the two hood pieces, making sure to line up the raw edges. The finished edges of the visor should line up at the single nicks.



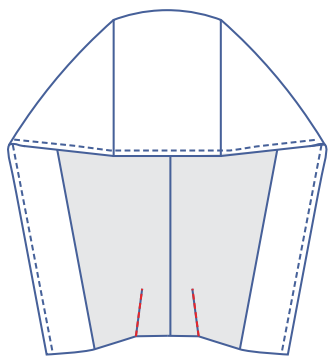
Pin and sew the pieces together.



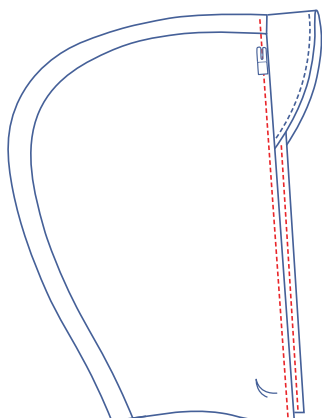
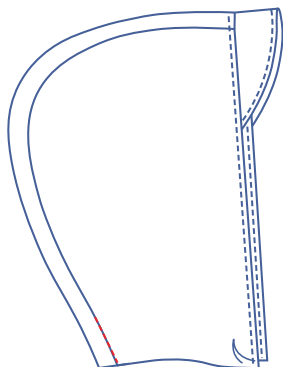
Pin and sew the bottom of the hood together (with the hood lining and hood still facing inwards). Leave an opening so that the hood can be turned right side out again. Trim the seam allowance in the corners and turn the hood back right side out.



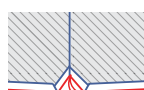
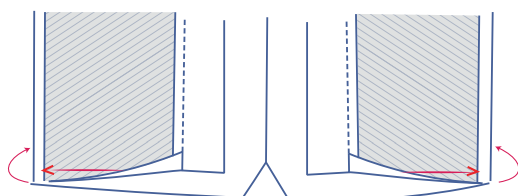
Hand sew or stitch the bottom of the hood closed.



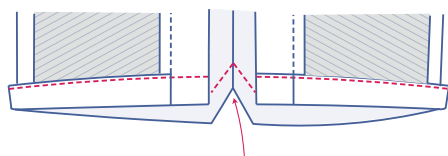
Secure both hood pieces together by stitching in the ditch of the midmost band along the right side of the garment at the dart.



Top stitch all the way the around at presser foot width from the edge.



1,5 cm



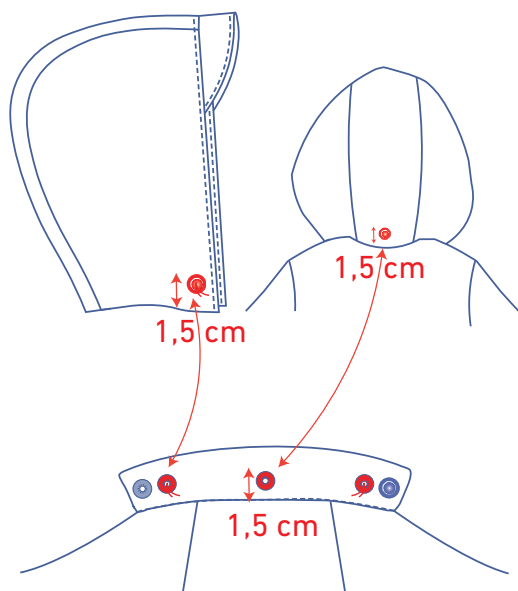
9

Continue finishing the hem. Fold the hem allowance 1.5 cm over and sew into place.

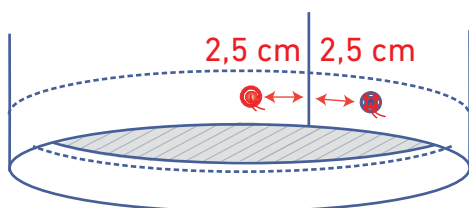


10

Attach a snap on either edge of the hood properly aligned with those on the collar.



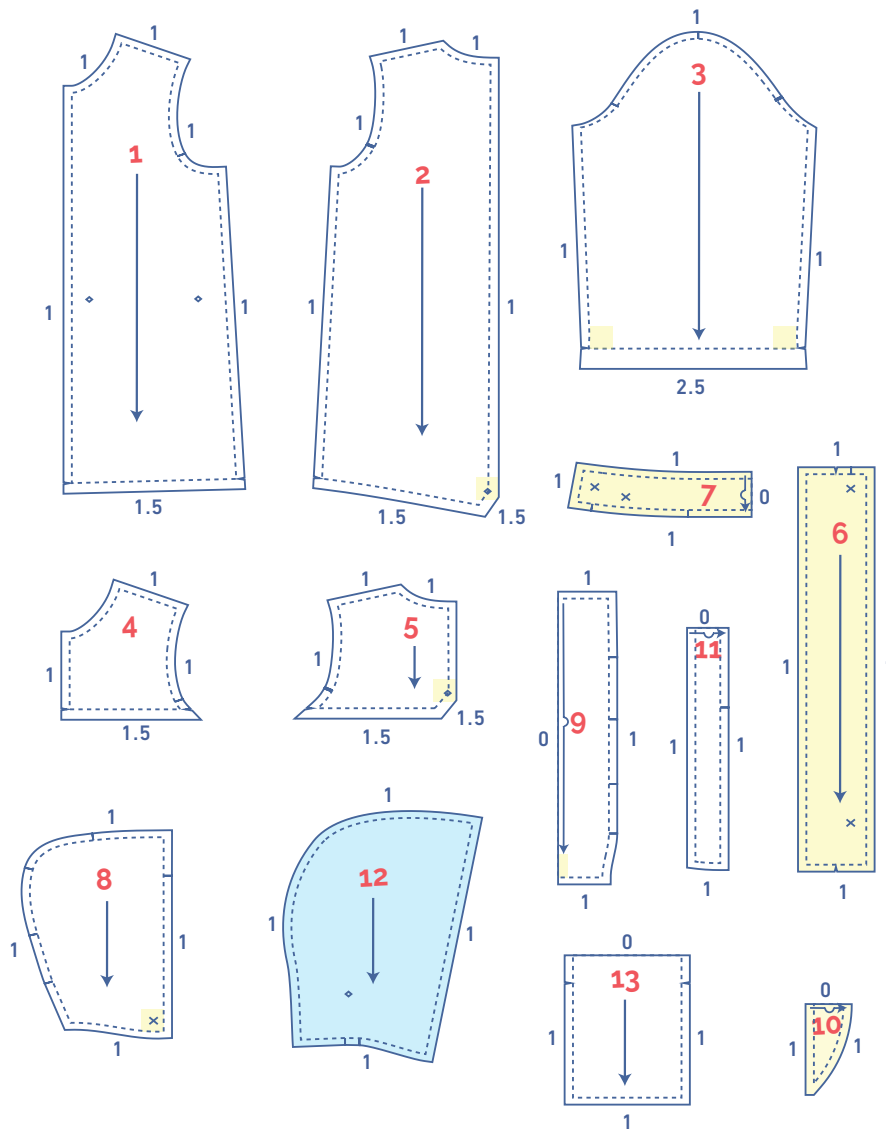
Attach a snap 1.5 cm higher than the bottom in the middle of the center hood band and the middle of the collar.



Attach snaps to the sleeve hem at 2.5 cm on either side of the bottom seams of the sleeve and in the middle of the stitched hem allowance.

pattern pieces & seam allowances (in cm)

To prepare the pattern before cutting you must first add the illustrated seam allowances around the paper pattern pieces as shown below.



1. front: 2x
2. back: 2x
3. sleeve: 2x
4. front yoke: 2x
5. back yoke: 2x
6. button placket: 2x
7. collar: 2x on fabric fold
8. hood: 2x
9. hood center band: 1x on fabric fold
10. hood visor: 2x on fabric fold
11. hood facing: 1x on the fabric fold
12. hood lining: 2x
13. pocket: 2x

IMPORTANT

The pieces highlighted in light yellow have iron-on interfacing attached to the wrong side.

fabric layout for fabrics 140 cm wide

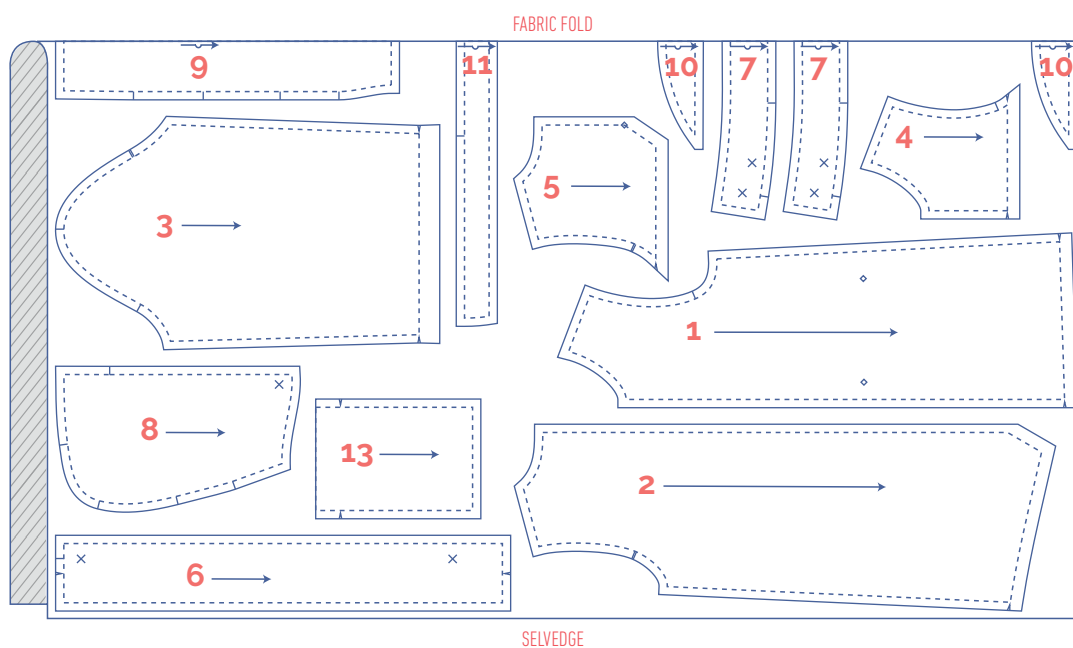
Before we begin sewing, make sure to transfer all markings onto your fabric:

- Nick the pattern paper and fabric at the places at the places with a single vertical line (I) or a double vertical lines (II).
- Cut a notch out of the fabric at a V symbol or on the finished hemline.
- Cut a notch (V notch) out of the pieces that lie on the fabric fold to mark the middle of these pieces.

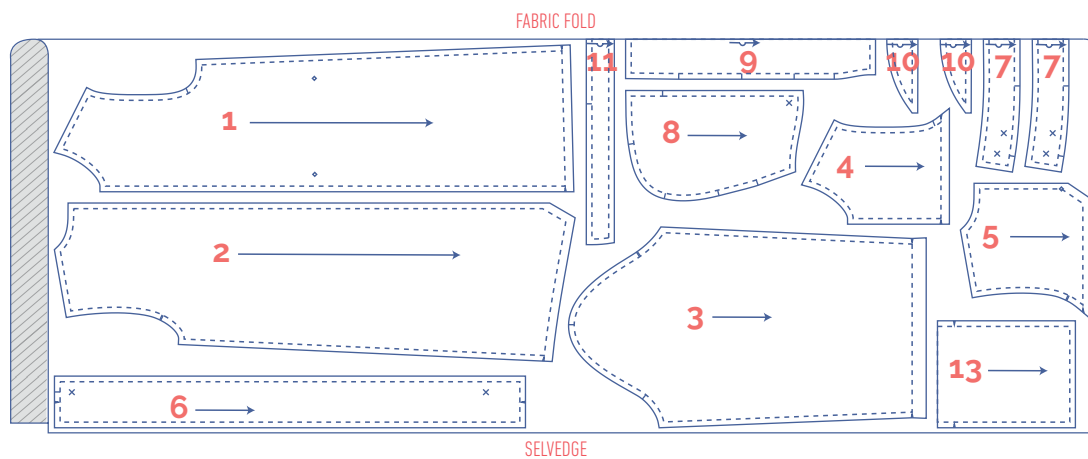
Indicate crucial points on the pattern:

- Mark the position of the snaps by hand with basting thread (↖) by basting through the middle of the (X).
- Mark the pocket and the pivot point of the dart/dart equivalent by hand with basting thread (↖) by basting through the middle of the (◇).

2 - 5 Y



6 - 14 Y



fabric plan for lining 140 cm wide (size 2 - 14 Y)

