

# Izzy by Fibre ood

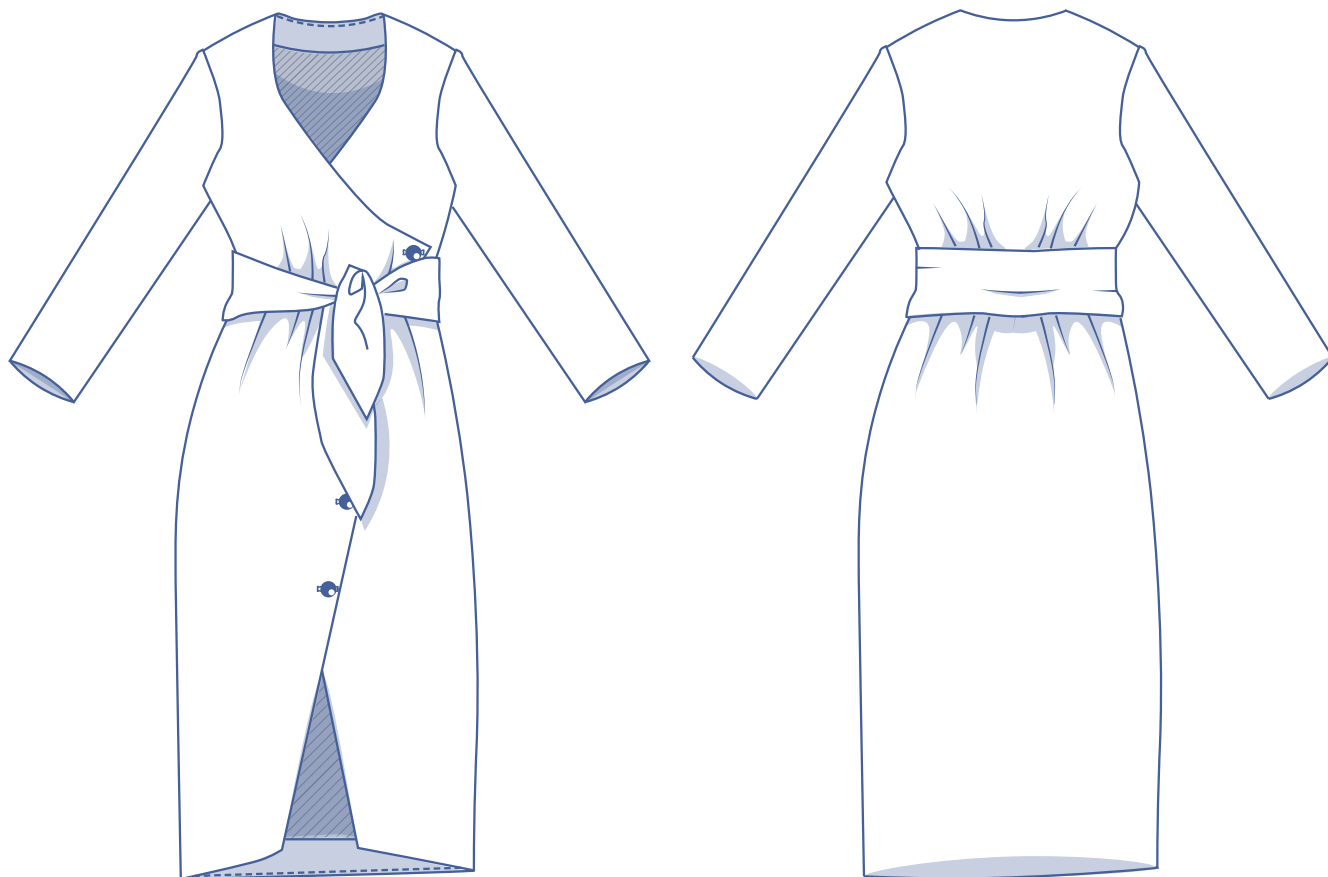


# Izzy by Fibre ood



32 - 58

A sewing shortcut here and there is okay every once in a while! And definitely if we're talking about the Izzy Dress! This dress looks like a bonafide wrap dress, but one 'wrap' is sewn securely into the side seam while the other closes with elegant fabric cover buttons. The waist is accentuated with a wide, loose belt that's easy to knot, long straight sleeves and the 'wrap' effect creates a V neck. It's very Autumn friendly.

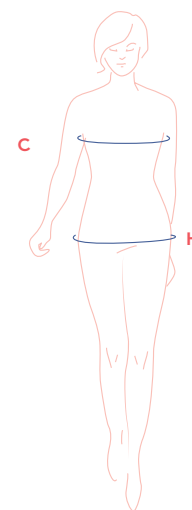


## size chart

size (EU)	32	34	36	38	40	42	44	46	48	50	52	54	56	58
UK	4	6	8	10	12	14	16	18	20	22	24	26	28	30
US	0	2	4	6	8	10	12	14	16	18	20	22	24	26
B (cm)	76	80	84	88	92	96	100	104	110	116	122	128	134	140
B (inches)	29.9	31.5	33.1	34.6	36.2	37.8	39.4	40.9	43.3	45.7	48	50.4	52.8	55.1
H (cm)	86	90	94	97	100	103	106	109	115	120	125	130	135	140
H (inches)	33.9	35.4	37	38.2	39.4	40.6	41.7	42.9	45.3	47.2	49.2	51.2	53.1	55.1

**Bust (B):** measure horizontally around the widest part of the bust.

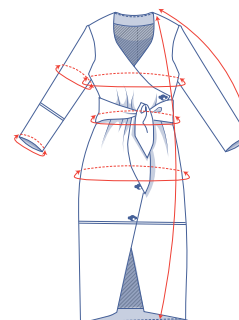
**Hips (H):** measure horizontally around the widest part of the lower body.



Choose your size based on your bust measurement. If your hips are wider than the corresponding hip measurements in the size chart, look at the chart below with hip measurements to see whether there's enough room at the hips or if the hip measurements will need to be altered. It's easy to do. Just trace the pattern, and instead of tracing the line for the smaller size, merge it with the line for the larger size.

## finished garment measurements (in cm)

This chart's measurements are based on the fabric type and serve as a reference. Ease has been added to the width measurements (in addition to the exact body measurements) for a more comfortable fit and to achieve a particular cut (fitted, loose, oversized). Depending on what you prefer, you can go a size smaller or larger than the 'right' size according to your body measurements.



size	32	34	36	38	40	42	44	46	48	50	52	54	56	58
length	123.5	124	124.5	125	125.75	126.25	126.75	127.25	129	130	130.75	131.5	132.25	133
sleeve length*	64.75	65	65.25	65.5	65.75	66.25	66.5	66.75	67.25	67.5	68	68.5	68.75	69.25
chest	85	89	93	97	101.25	105.25	109.25	113.25	119.25	125.25	131.25	137.5	143.5	149.5
waistline	85.5	87.5	89.5	93.5	97.5	101.5	103.5	107.5	113.5	119.5	125.5	131.5	137.5	143.5
hips	90.25	94.25	98.25	101.25	104.25	107.25	110.25	113.25	119.25	124.25	129.25	134.25	139.25	144.25
upper arm circumference	29.75	31	32	33.25	34.5	35.5	36.75	37.75	41.5	43.5	45.5	47.5	49.5	51.5
wrist circumference	25.5	26	26.5	27	27.5	28	28.5	29	29.75	30.5	31.25	31.75	32.5	33.25

\* Including the shoulder length.

Compare the stated lengths and widths to the measured or desired lengths and widths. **Lengthen** or **shorten** the dress and/or the sleeves by cutting the pattern pieces at the indicated double lines and then spreading the pattern pieces out X cm from each other or overlapping them where necessary. Make sure that the CF and CB lines and the side seams are always straight.



## IMPORTANT

Adjust the amount of fabric based on these alterations.

## fabric advice



Izzy works best in fabric with a slight drape and mid-weight. Knitted and woven fabrics both work well here. What's essential is that the fabric can fall softly. We used a fairly heavy, soft leather-look fabric. Find out all the facts about the Fibre Mood fabric collection and the accompanying fabric layouts [here](#) or on [www.fibre mood.com/en/fabrics](http://www.fibre mood.com/en/fabrics).

## supplies



- Thread
- Cover buttons (Ø 1.5 cm): 5
- Iron-on interfacing: max. 90 cm
- Fabric: see table

fabric used (in cm) F collection	32	34	36	38	40	42	44	46	48	50	52	54	56	58
Violet black leather look fabric fabric width 150 cm	320	320	325	330	330	335	340	345	350	375	390	395	410	425

Discover the Fibre Mood fabric collection and the accompanying fabric layouts [here](#) or on [www.fibre mood.com/en/fabrics](http://www.fibre mood.com/en/fabrics).

fabric used (in cm) standard	32	34	36	38	40	42	44	46	48	50	52	54	56	58
fabric width 140 cm	320	320	325	330	330	335	340	350	375	380	400	420	425	435

The corresponding fabric layout can be found on the last page of these sewing instructions.

# sewing instructions



The method used to finish sewing the garment depends on the fabric used.

This fabric used doesn't fray, so there's no need for overlocking. Don't forget to finish the raw edges with an overlock stitch if you do decide to use a fabric that frays.

The pieces are always sewn together with the right sides of the fabric facing together, unless stated otherwise.

F front

B back

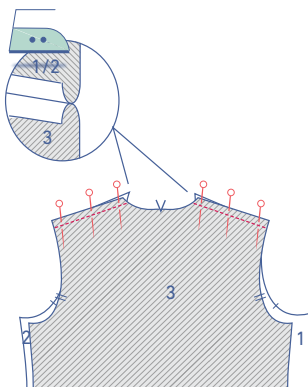
RF right front

LF left front

 right side

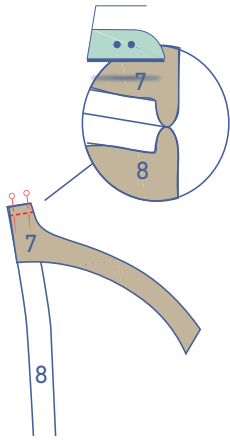
 wrong side

 iron-on interfacing



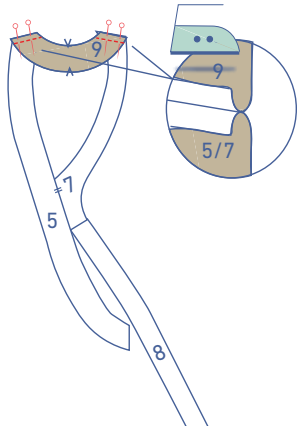
**1**

Pin and sew the shoulder seams of the LF (1), RF (2) and the back (3). Press open the shoulder seams.

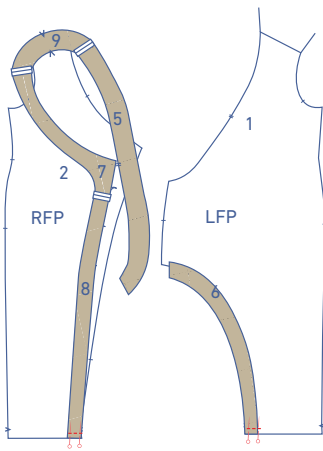


## 2

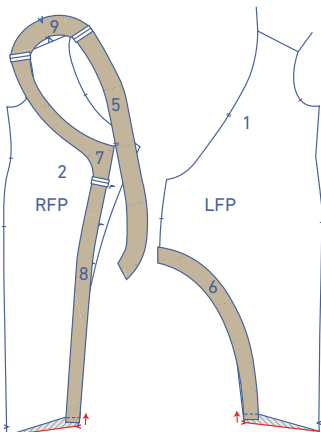
Pin and sew the seam of the neck facing RF (7) and facing RF (8) so that you create the complete facing for the RF. Press open the seam.



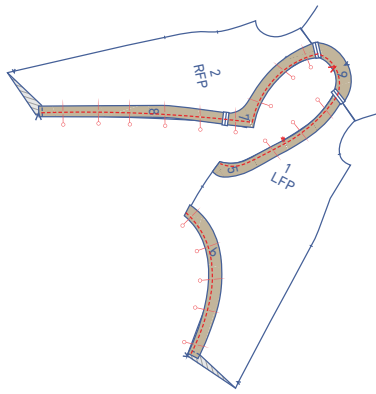
Pin and sew the shoulder seams of the neck facing LF (5) and the combined facing RF to each side of those on the back (9). Press open the seam allowance.



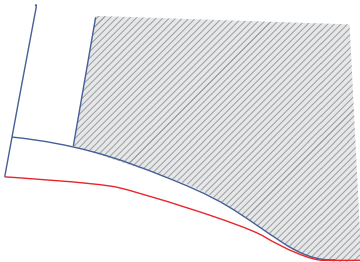
Pin and sew the bottom of the facing RF and the facing LF (6) to the hem allowance of the RF and LF.



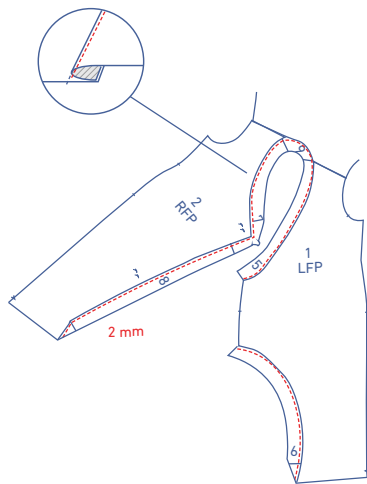
Now press the hem allowance + facing onto the V notches on the right side of the garment.



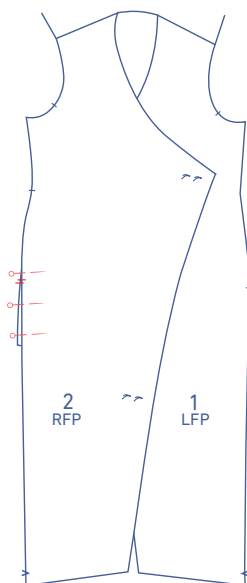
Pin and sew the garment's facings to the dress with the corresponding nicks matching.



On both sides of the hem, turn the corner out the right way.

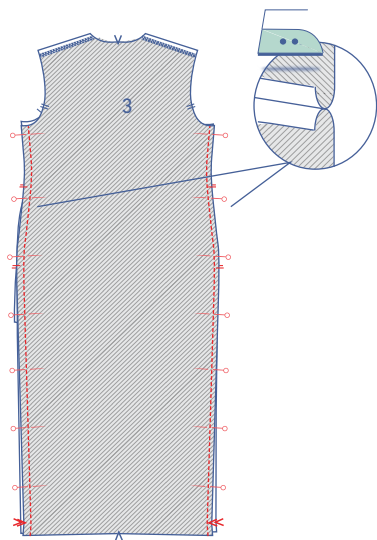


Fold the facing pieces and the seam allowance over towards the facing. At 2 mm from the seam, understitch through all layers (facing + underlying seam allowance) of the facing. Turn the facing over to the wrong side and press.

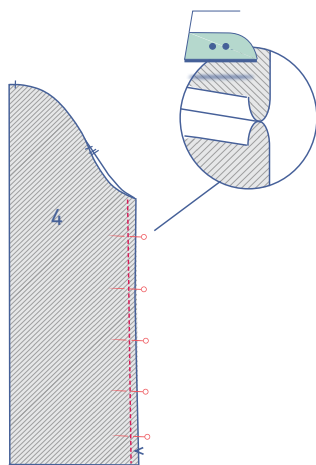


### 3

Fold the RF onto the LF and pin both pieces together along the side seam, with the nicks matching.

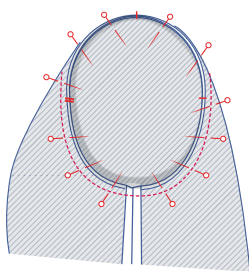


Now, pin and sew the side seams of the front and back. Press open the seam allowance.

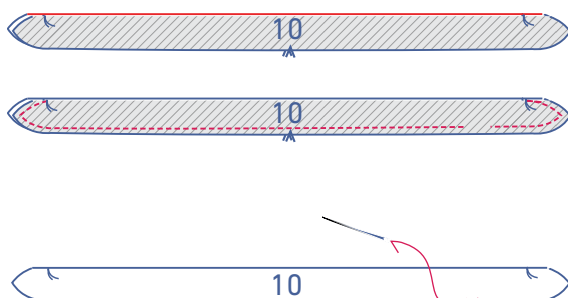


## 4

Pin and sew the sides of the sleeve (4). Press open the seams.



Pin and sew the top of the sleeve (= sleeve cap) to the armhole with the corresponding nicks matching. The single nick marks the front, while the double nicks mark the back. The single nick at the top should be perfectly aligned with the shoulder seam. Distribute the remaining fabric evenly between the nicks.

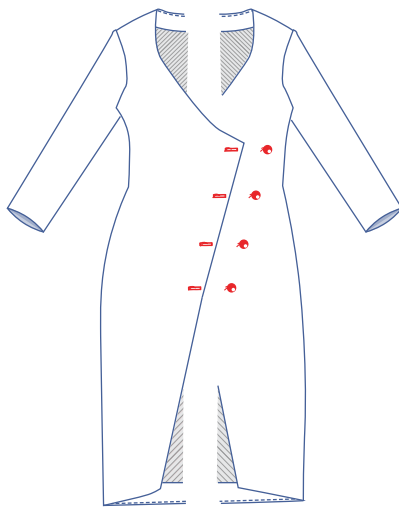
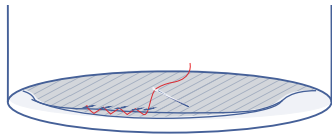
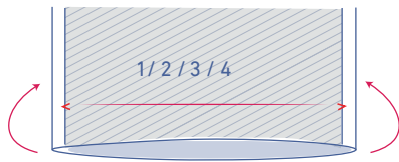


## 5

Fold the belt (10) in half lengthwise with the right side of the fabric facing inwards. Sew the indicated sides. Leave an opening so that the belt can be turned right side out again.

Next, turn the belt back right side out and hand-stitch the opening closed. Sew the opening closed.





## 6

Fold the hem allowance of the garment and the sleeves. Sew or tape the hems and facing pieces in place.

## 7

Make horizontal buttonholes in the RF. The top and bottom of the buttonhole are marked on the pattern. Measure and space the other buttons out equally from these points. Sew the buttons on the LF, so that they are aligned with the buttonholes on the RF.

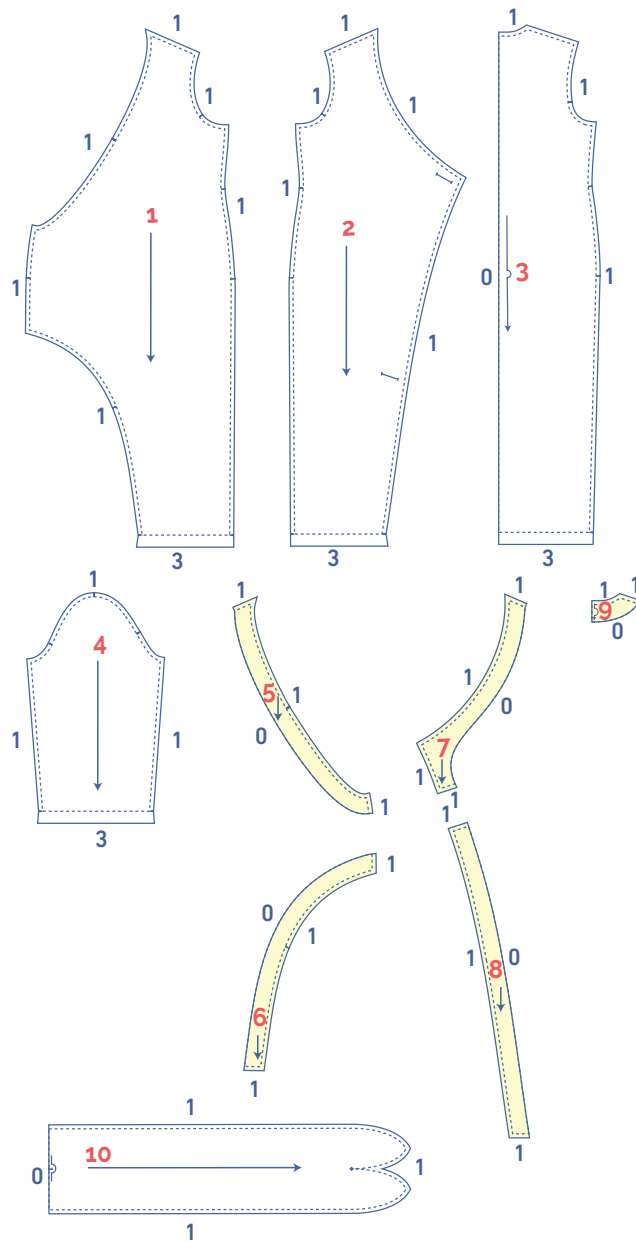
## pattern pieces & seam allowances (in cm)

To prepare the pattern before cutting you must first add the illustrated seam allowances around the paper pattern pieces as shown below.

1. left front: 1x
2. right front: 1x
3. back: 1x on fabric fold
4. sleeve: 2x
5. neckline facing LF: 1x
6. facing LF: 1x
7. neckline facing RF: 1x
8. facing RF: 1x
9. neckline facing back: 1x on fabric fold
10. belt: 1x on fabric fold

### IMPORTANT

The pieces highlighted in light yellow have iron-on interfacing attached to the wrong side.



### IMPORTANT

Pattern pieces 7 and 8 are actually one pattern piece. We split the piece into 2 pattern pieces to save on fabric. You can create 1 pattern piece by taping both pieces at the stitching line.

# fabric layout for fabrics 140 cm wide

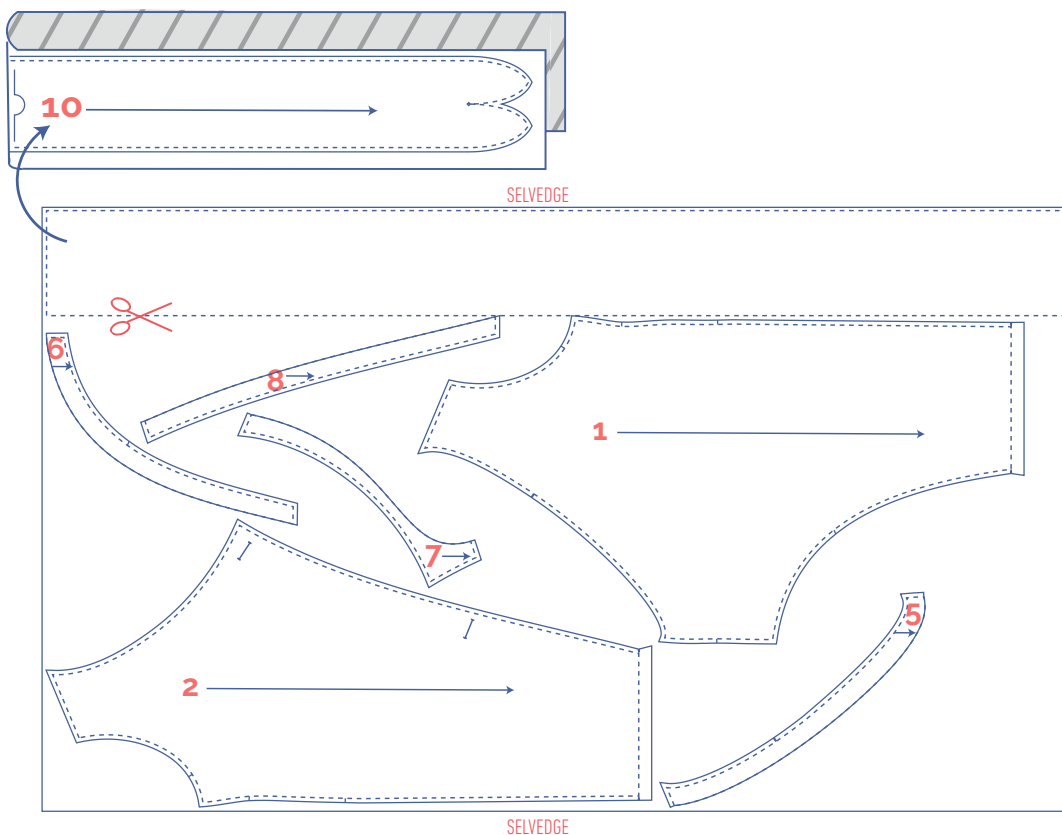
Before we begin sewing, make sure to transfer all markings onto your fabric:

- Mark the buttonholes (↔) by hand, indicating the sides with basting thread (↘).

Mark the following important points on the outline of the pattern:

- Nick the pattern paper and fabric at the places where a single vertical line (I) and double vertical lines (II) are indicated.
- Cut a notch out of the fabric at a V notch symbol or on the finished hemline.
- Cut a notch out of the pieces that lie on the fabric fold to mark the middle of these pieces.

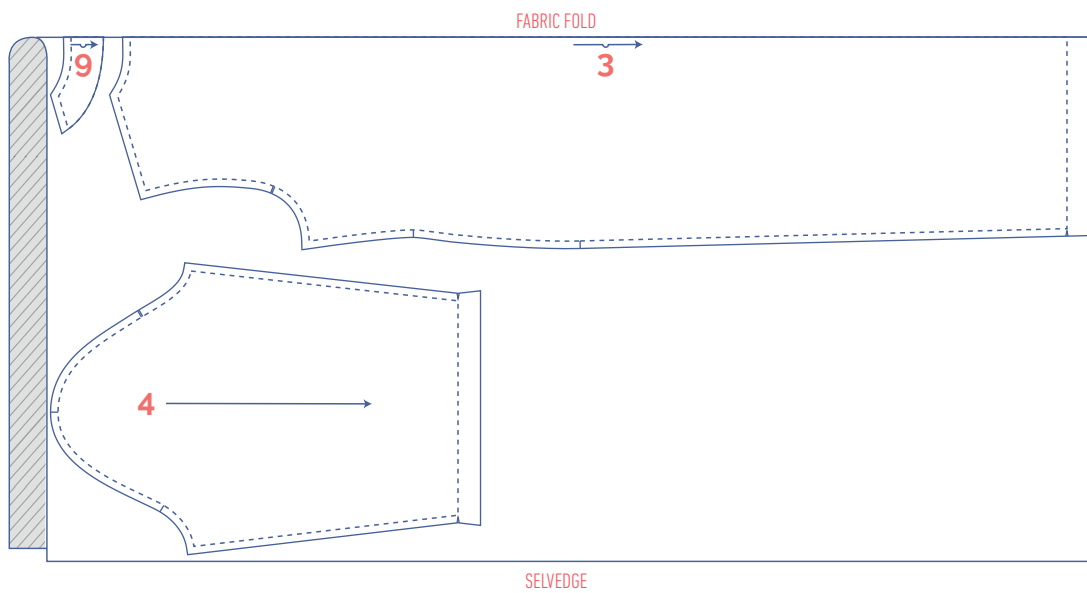
**32 - 58**



## KEEP IN MIND

You only need to cut pattern piece 1, 2, 5, 6, 7, 8 and 10 once.

32 - 46



48 - 58

