

Holly by Fibre ⚡ood

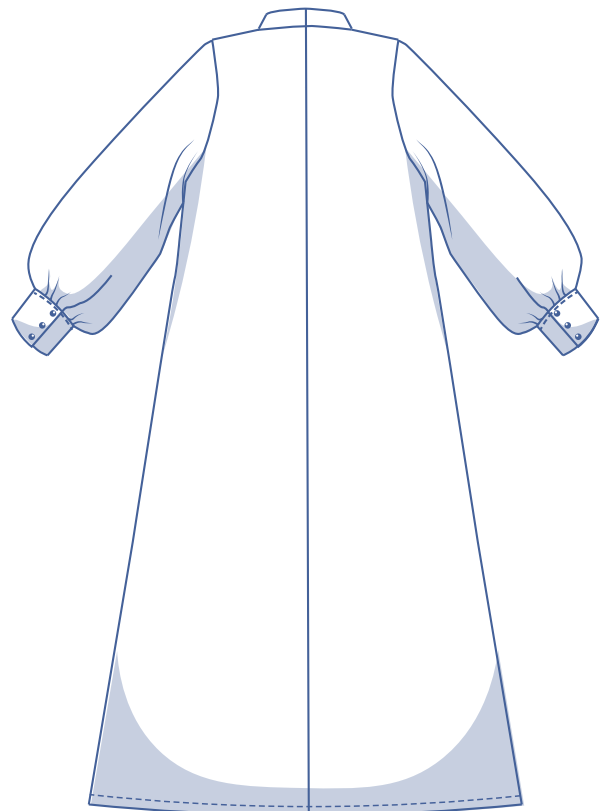
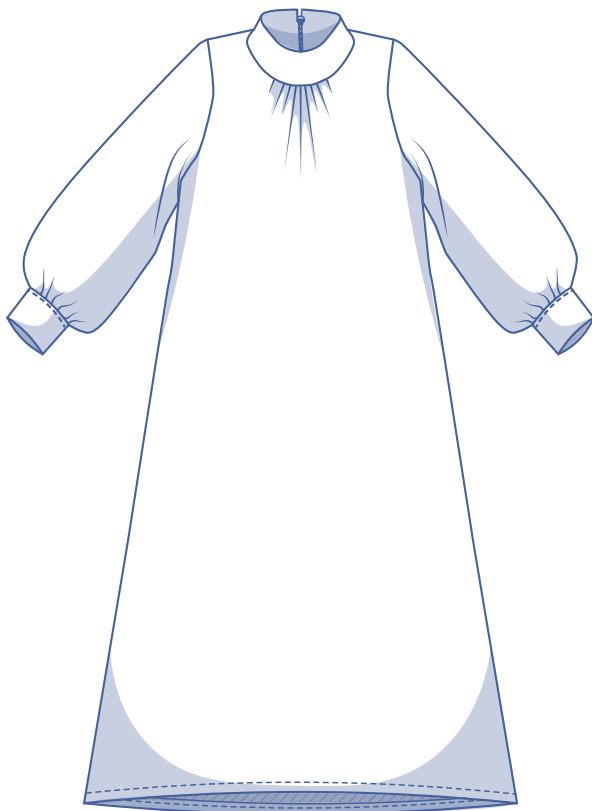


Holly by Fibre Mood



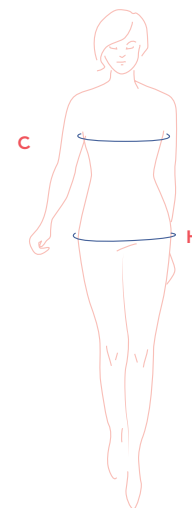
32 - 58

The ultra demure ankle length dress trend is far from over, and the Holly dress pays homage to this trend with perfection! This pattern just had to have a standing collar. In keeping with the style it features subtle gathers at the neckline and has been finished with an invisible zip. Not convinced about the length? Altering this pattern to your taste is easy!



size chart

| size | 32 | 34 | 36 | 38 | 40 | 42 | 44 | 46 | 48 | 50 | 52 | 54 | 56 | 58 |
|------------|------|------|------|------|------|------|------|------|------|------|------|------|------|------|
| UK | 4 | 6 | 8 | 10 | 12 | 14 | 16 | 18 | 20 | 22 | 24 | 26 | 28 | 30 |
| US | 0 | 2 | 4 | 6 | 8 | 10 | 12 | 14 | 16 | 18 | 20 | 22 | 24 | 26 |
| B (cm) | 76 | 80 | 84 | 88 | 92 | 96 | 100 | 104 | 110 | 116 | 122 | 128 | 134 | 140 |
| B (inches) | 29.9 | 31.5 | 33.1 | 34.6 | 36.2 | 37.8 | 39.4 | 40.9 | 43.3 | 45.7 | 48 | 50.4 | 52.8 | 55.1 |
| H (cm) | 86 | 90 | 94 | 97 | 100 | 103 | 106 | 109 | 115 | 120 | 125 | 130 | 135 | 140 |
| H (inches) | 33.9 | 35.4 | 37 | 38.2 | 39.4 | 40.6 | 41.7 | 42.9 | 45.3 | 47.2 | 49.2 | 51.2 | 53.1 | 55.1 |



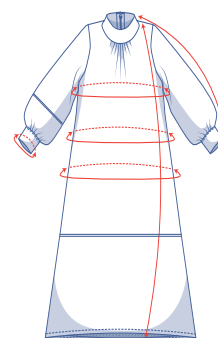
Bust (B): measure horizontally around the widest part of the bust.

Hips (H): measure horizontally around the widest part of the lower body.

Choose your size based on your bust measurement. If your hips are wider than the corresponding hip measurements in the size chart, look at the chart below with hip measurements to see whether there's enough room at the hips or if the hip measurements will need to be altered. It's easy to do. Just trace the pattern, and instead of tracing the line for the smaller size, merge it with the line for the larger size.

finished garment measurements(in cm)

This chart's measurements are fabric type and serve as a reference. Ease has been added to the width measurements (in addition to the exact body measurements) for a more comfortable fit and to achieve a particular cut (fitted, loose, oversized). The Holly Dress is made in a loose cut, without being oversized. Depending on what you prefer, you can go a size smaller or larger than the 'right' size according to your body measurements.



| size | 32 | 34 | 36 | 38 | 40 | 42 | 44 | 46 | 48 | 50 | 52 | 54 | 56 | 58 |
|--------------------------|-------|-------|--------|--------|--------|--------|--------|--------|--------|--------|--------|--------|--------|--------|
| length | 120.5 | 121 | 121.5 | 122 | 122.75 | 123.25 | 123.75 | 124.25 | 126 | 126.75 | 127.5 | 128.25 | 129 | 130 |
| sleeve length* | 71.75 | 72 | 72.25 | 72.5 | 73 | 73.25 | 73.5 | 73.75 | 74.25 | 74.75 | 75 | 75.5 | 75.75 | 76.25 |
| chest | 87.75 | 92 | 96.5 | 100.75 | 105.25 | 109.5 | 114 | 118.25 | 124.75 | 131.25 | 137.75 | 144.25 | 150.75 | 157.25 |
| waistline | 88 | 90.25 | 92.5 | 96.75 | 101 | 105.25 | 107.5 | 111.75 | 118.5 | 125.25 | 131.75 | 138.5 | 145.25 | 151.75 |
| hips | 98 | 102 | 106.25 | 109.5 | 112.75 | 116 | 119 | 122.25 | 128 | 133.5 | 138.75 | 144 | 149.25 | 154.5 |
| wrist trim circumference | 20 | 20.5 | 21 | 21.5 | 22 | 22.5 | 23 | 23.5 | 24 | 24.5 | 25 | 25.5 | 26 | 26.5 |

* Including the shoulder length.

Compare the stated lengths to the measured or desired lengths. **Lengthen** or **shorten** the dress and/or the sleeves by cutting the pattern pieces at the indicated double lines and then spreading the pattern pieces out X cm from each other or overlapping them where necessary. Make sure that the CF and CB lines and the side seams are always straight.



IMPORTANT

Adjust the amount of fabric based on these alterations.

fabric advice



If you want to do justice to the austere cut of this dress, make it in a fabric with a print – think ditsy florals. Use a fabric with a fluid drape that doesn't hang too heavily. That way you get a lovely 'puffed' effect at the wrist trim and the length won't be too bulky for the dress. We used a light, floral-print fabric made from viscose and wool. Find out all the facts about the Fibre Mood fabric collection and the accompanying fabric layouts [here](#) or on www.fibre mood.com/en/fabrics.

supplies



- Thread
- Invisible zip: 60 cm
- Iron-on interfacing: max. 60 cm
- Cover buttons (Ø 1.1 cm): 6
- Fabric: see table

| fabric used (in cm) F collection | 32 | 34 | 36 | 38 | 40 | 42 | 44 | 46 | 48 | 50 | 52 | 54 | 56 | 58 |
|--|-----|-----|-----|-----|-----|-----|-----|-----|-----|-----|-----|-----|-----|-----|
| floral print fabric fabric width 140 cm | 300 | 305 | 305 | 310 | 315 | 320 | 320 | 325 | 330 | 335 | 340 | 340 | 345 | 350 |

Discover the Fibre Mood fabric collection and the accompanying fabric layouts [here](#) or on www.fibre mood.com/en/fabrics.

| fabric used (in cm) standard | 32 | 34 | 36 | 38 | 40 | 42 | 44 | 46 | 48 | 50 | 52 | 54 | 56 | 58 |
|---------------------------------|-----|-----|-----|-----|-----|-----|-----|-----|-----|-----|-----|-----|-----|-----|
| fabric width 140 cm | 195 | 200 | 210 | 230 | 240 | 245 | 270 | 270 | 300 | 305 | 315 | 315 | 320 | 320 |

The corresponding fabric layout can be found on the last page of these sewing instructions.

sewing instructions



The method used to hem the garment will depend on your chosen fabric. The pieces are always sewn together with right sides facing, unless stated otherwise.

F front

B back

CB centre back

RBP right back piece

LBP left back piece



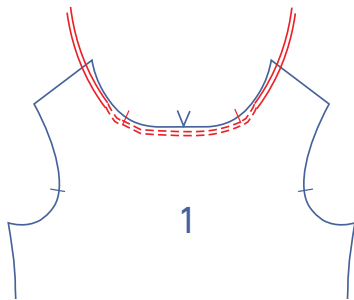
right side



wrong side

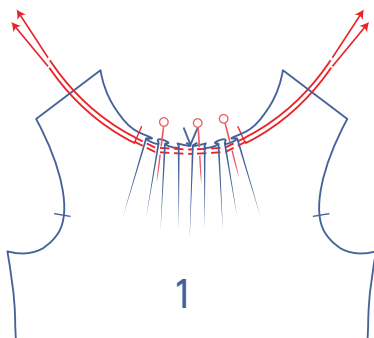


iron-on interfacing

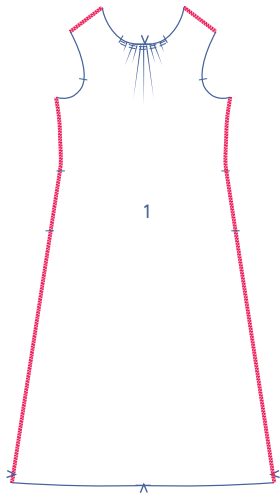


1

Sew 2 parallel rows of stitching on the front (1) neckline, within the seam allowance, using a long stitch length at a low thread tension. Sew just past the nicks on either side and don't backstitch.

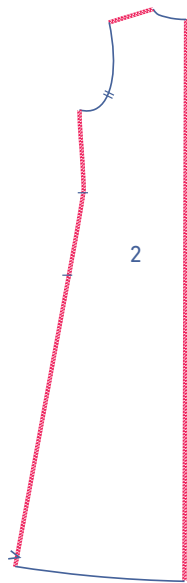


Carefully tug the ends of the threads to gather the fabric. Pin temporarily into place. Later, when it's time to sew the collar, you'll distribute the gathers into their final positions.

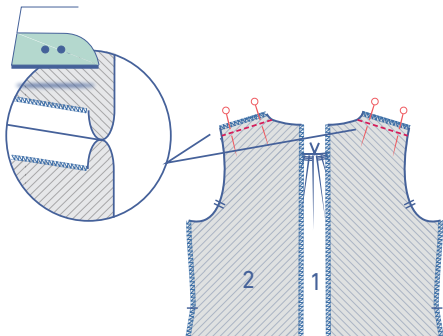


2

Finish the shoulder and side seams of the front with overlock stitching.

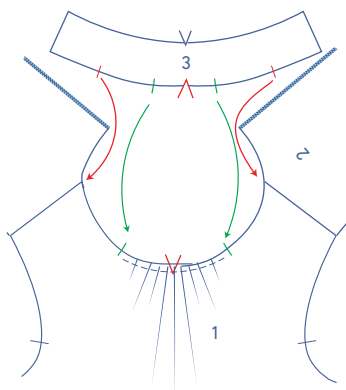


Finish the shoulder, side and CB seams of the back (2) with overlock stitching.



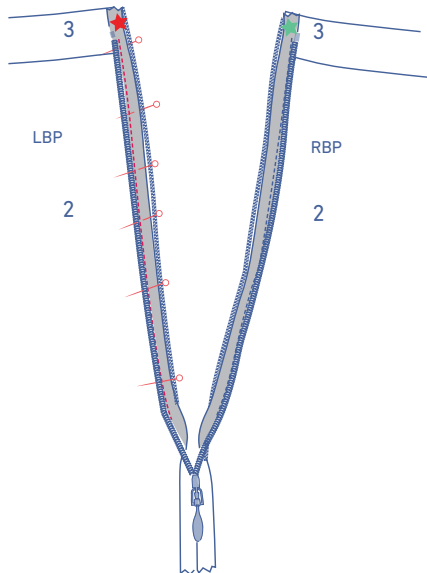
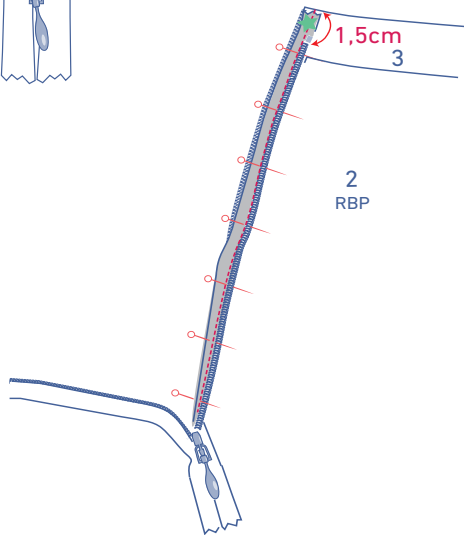
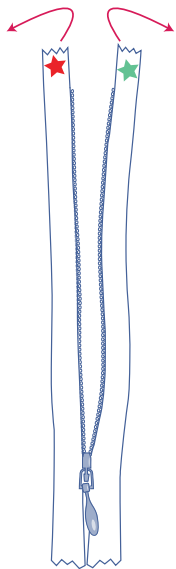
3

Pin and sew the shoulder seams and press open the seam allowance.



4

Pin one collar piece (3) to the neckline and while doing so, distribute the gathers so that the nicks on the front match the nicks on the collar (3). Sew into place.

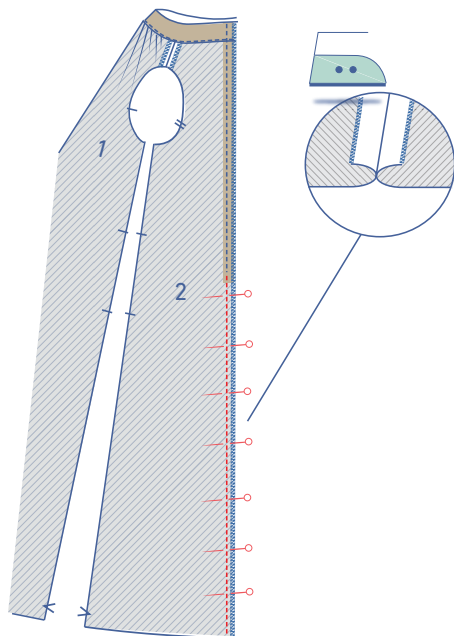


5

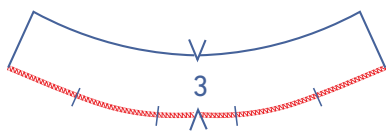
Place the invisible zip in front of you with the right side facing up. Open the zip.

Fold the zip tape marked with the green star to the right and pin it face down the RBP. The zip tape should line up with the edge of the fabric with the zip teeth 1.5 cm under of the collar's edge. Sew into place with the invisible zip-per foot.

Fold the zip tape marked with the red star to the left and pin it to the LBP. The zip tape should line up with the fabric edge with the zip teeth 1.5 cm under the collar's edge. Sew into place with the invisible zipper foot.

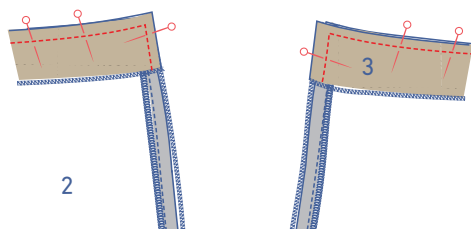


Close the zip and sew the rest of the CB seam with the narrow zipper foot. Start sewing a little above and just next to your previous row of stitching from sewing the zip tape. Press open the seam allowance.

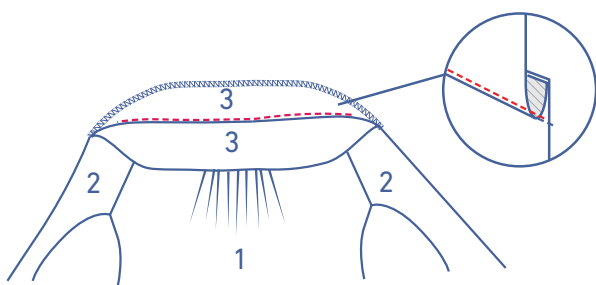


6

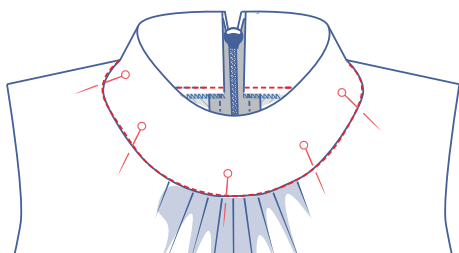
Finish the bottom of the remaining collar piece with overlock stitching.



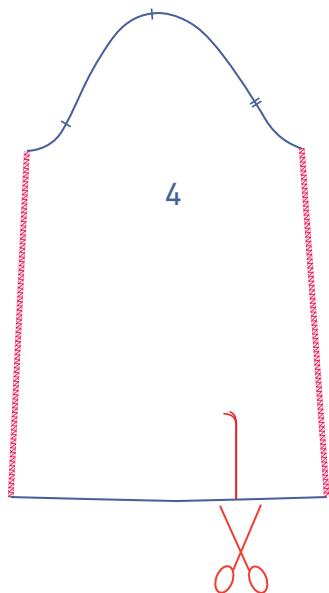
and sew the sides indicated.



Fold the collar piece (with the overlocked bottom) and the seam allowance towards that collar piece and sew the collar piece at 2 mm from the seam, through the layers. Sew as far as you can here.

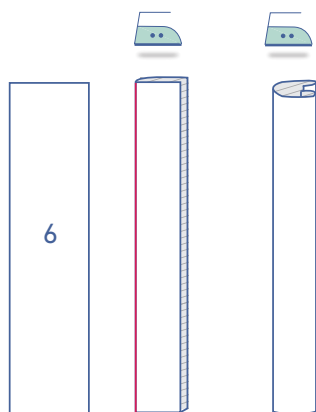


Neatly fold the collar piece to the wrong side and pin in place from the right side of the garment. Secure by stitching in the ditch, along the seam.



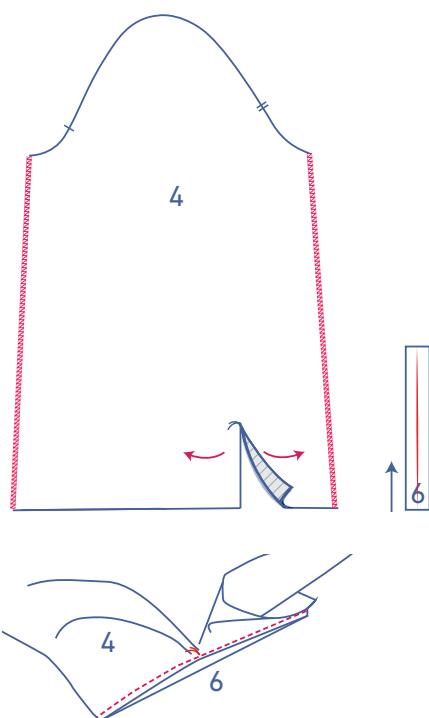
7

Finish the sides of the sleeve (4) with overlock stitching. Snip into the sleeve up to the basting thread.

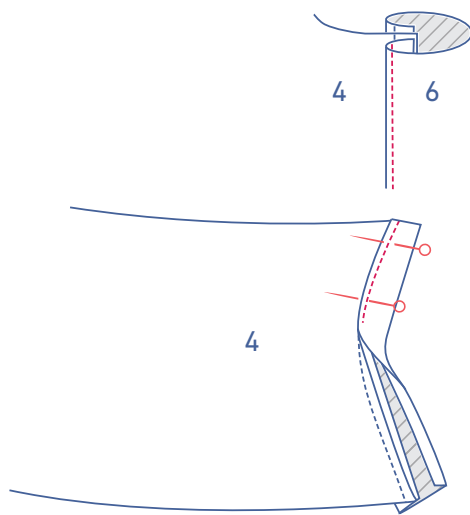


Press the bias sleeve placket (6) as follows:

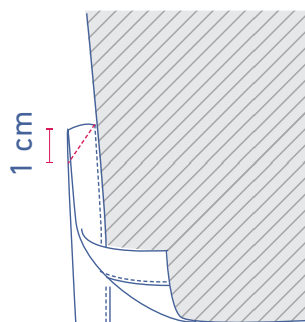
- Start by pressing the bias in half lengthwise all the way down to create a fold line.
- Next, fold the long sides inwards until the raw edges meet the fold line. Press. Open the bias back out.



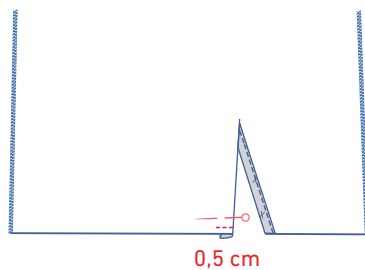
Open the sleeve split so that you are working with a single straight line. Slide the bias placket under the sleeve with the right side facing up. Match one long edge to the edge of the arm split and pull the sleeve a little to the side at the centre basting thread. Sew together along the pressed fold line. Only a few fabric threads have been sewn in place at the basting thread.



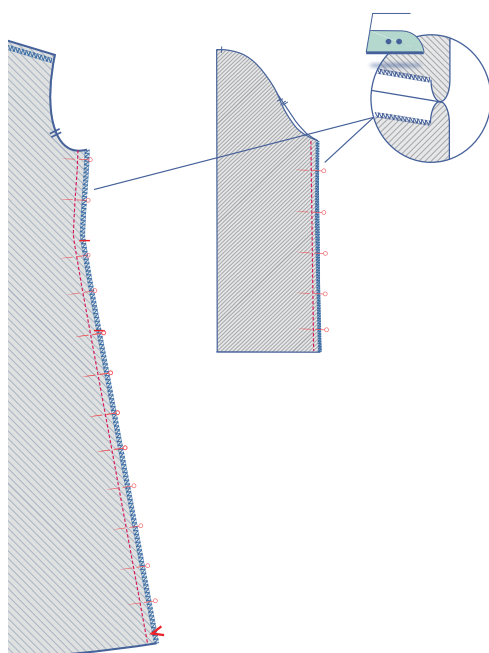
Fold the bias towards the right side of the sleeve and place the pressed fold line directly over the previous stitching. Sew into place right next to the edge.



Fold the sleeve in half widthwise, with the right side facing inwards. Sew the top edge of the bias together at an angle.



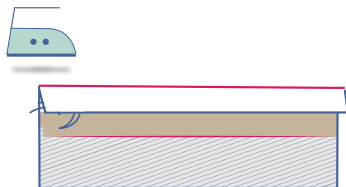
Fold the bias on the sleeve front (i.e., the widest side of the sleeve hem) onto the wrong side of the sleeve and sew the bias into place at 0.5 cm from the bottom.



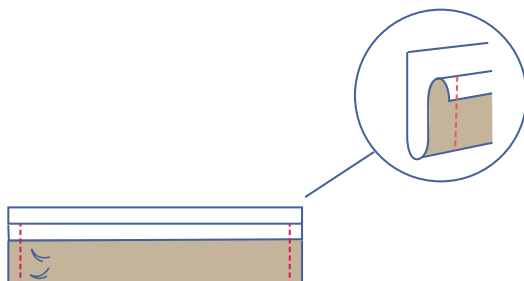
Pin and sew the side seams of the FP and BP and the sleeves. Press all of the seam allowance open.



Fold the wrist trim (5) in half lengthwise with the right side of the fabric facing towards to create a fold line.



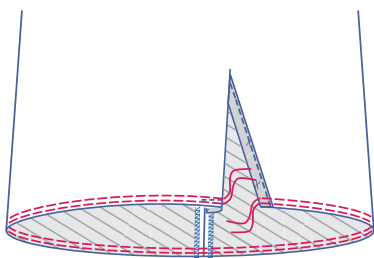
Press 1 cm of seam allowance along the long side of the wrist trim (the side with the basting) towards the wrong side.



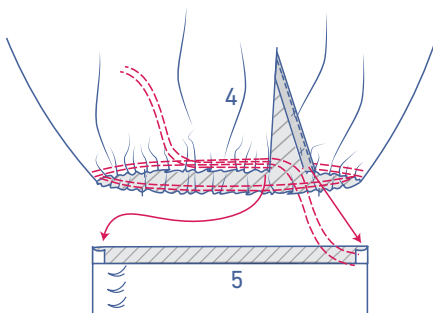
Fold the wrist trim in half at the pressed fold line with the right side of the fabric facing inwards. Sew the short ends.



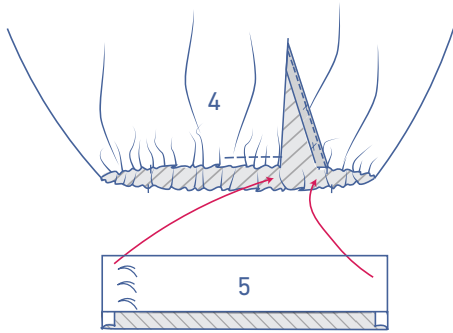
Turn the right way out.



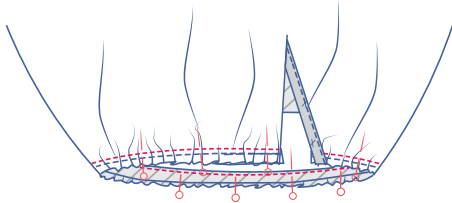
Using a long stitch length and a low thread tension, sew 2 parallel rows of stitching on the bottom of the sleeve within the seam allowance.



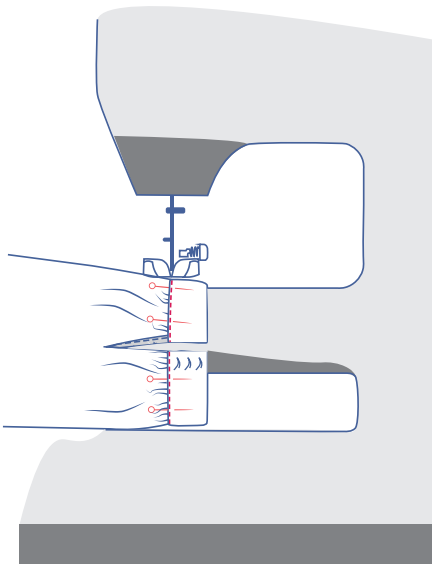
Carefully tug the ends of the threads to pull the fabric into gathers. The bottom of the sleeve needs to match the length of the wrist trim exactly.



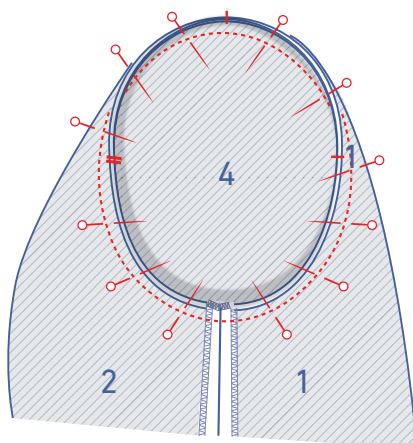
Slide the wrist trim into the sleeve.



Pin the right side of the aw edge of the wrist trim to the bottom of the sleeve along the inside (= the wrong side). Distribute the gathers evenly. Sew into place. Remove the gathering threads when you're done.

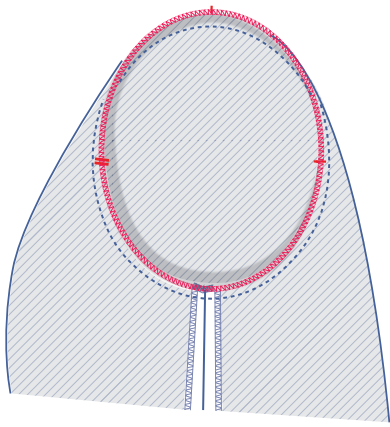


Turn the wrist trim over to the right side of the sleeve. Place the fold line directly over the previous stitching. Sew into place right next to the edge.

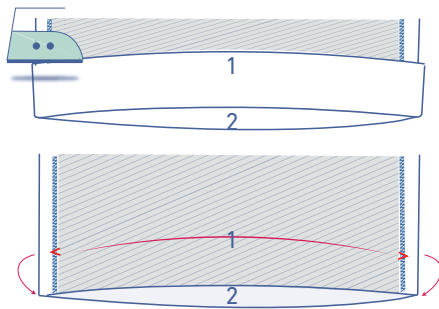


8

Pin the sleeve cap to the armhole with the corresponding nicks matching. The single sleeve nick should match the single nick on the front, and the double nicks on the sleeve should match the double nicks on the back. The top single sleeve nick matches the shoulder. Distribute the remaining fabric between the nicks. Sew into place.

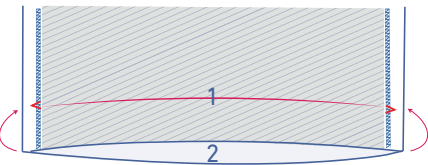
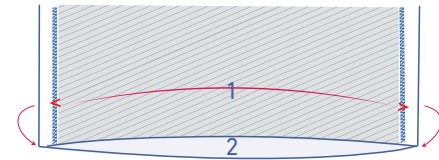


Finish the raw edges together with overlock stitching.

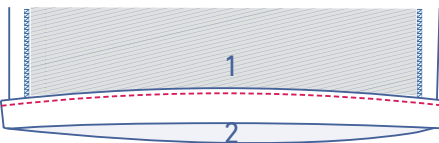
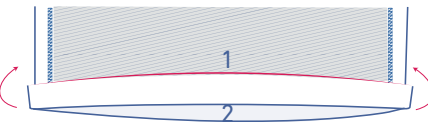


9

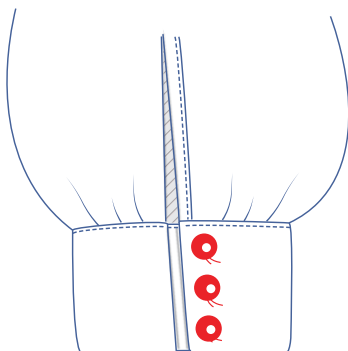
Press the hem allowance up at the V notches and then unfold.



Place the raw edge along the pressed fold line and then fold once again.

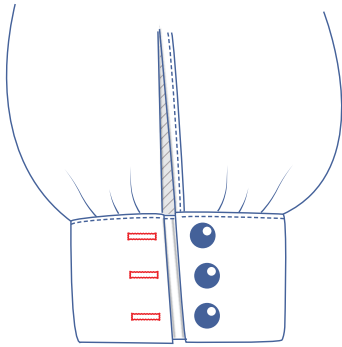


Sew into place next to the edge.



10

Sew the buttons on at the markings indicated on the wrist trim.



Make horizontal buttonholes that align with the buttons.

11

Optional



Fold the belt (7) in half lengthwise with the right side of the fabric facing inwards.



Sew the indicated sides and leave an opening to turn the belt right side out again.



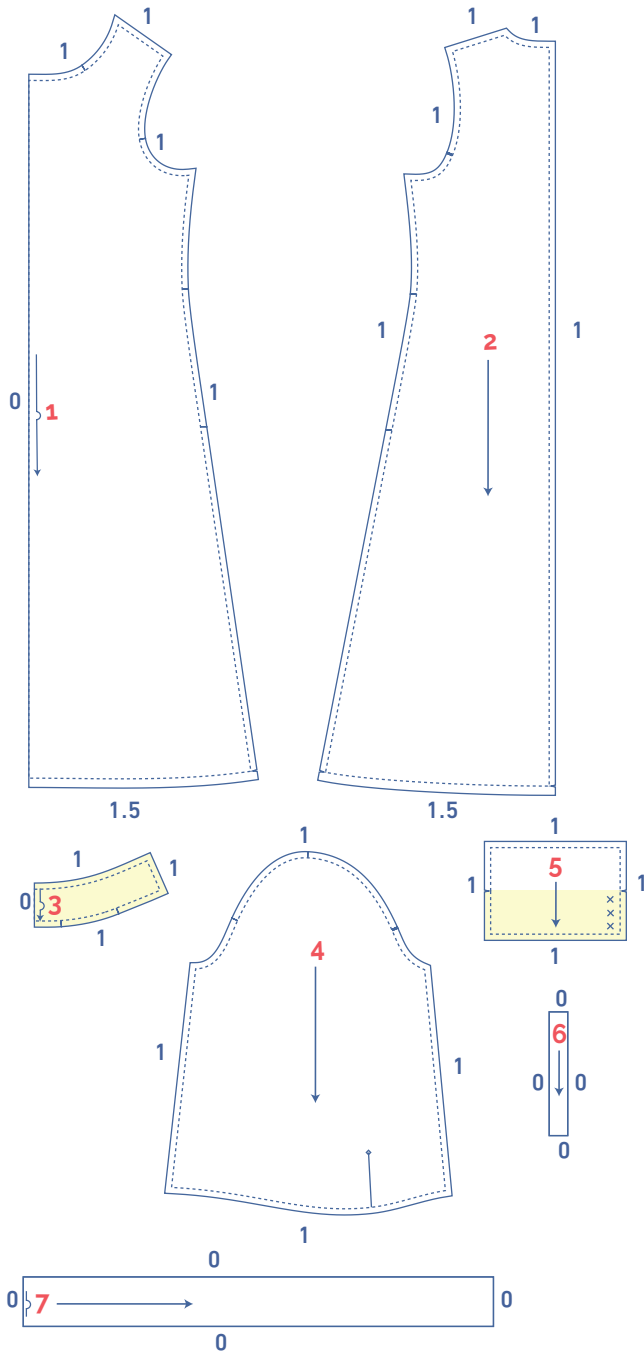
Turn the belt right side out.



Sew all the way around at 2 mm from the edge and press.

pattern pieces & seam allowances (in cm)

To prepare the pattern before cutting you must first add the illustrated seam allowances around the paper pattern pieces as shown below.



1. front: 1x on fabric fold
2. back: 2x
3. collar: 2x on fabric fold
4. sleeve: 2x
5. wrist trim: 2x
6. bias sleeve placket: 2x. You'll need to create this pattern piece yourself. Draw a 6x20 cm rectangle.
7. belt*: 1x on fabric fold. You'll need to create this pattern piece yourself. Draw a rectangle of 8x85 cm (size 32-46) or 8x105 cm (size 48-58).

* optional

IMPORTANT

The pieces highlighted in light yellow have iron-on interfacing attached to the wrong side.

fabric layout for fabrics 140 cm wide

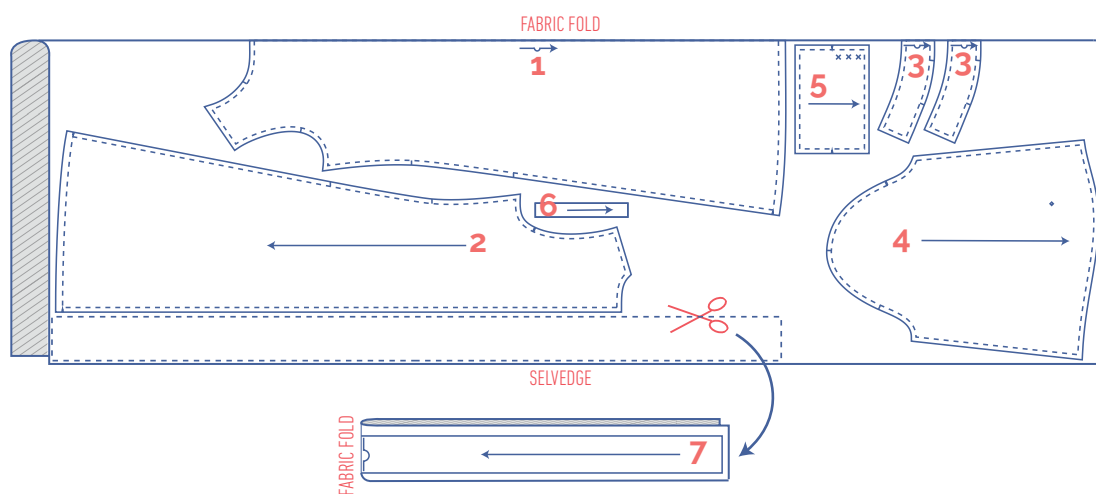
Before we begin sewing, make sure to transfer all markings onto your fabric:

- Nick the pattern paper and fabric at the places where a single vertical line (I) and double vertical lines (II) are indicated.
- Cut a notch out of the fabric at a V notch symbol or on the finished hemline.
- Cut a notch out of the pieces that lie on the fabric fold to mark the middle of these pieces.

Indicate crucial points on the pattern:

- Mark the position of the buttons by hand with basting thread (↵) by basting through the middle of the (X).
- Mark the tip of the sleeve split by hand with basting thread (↵) by basting through the middle of the (◇).

32 - 38



40 - 58

