

# Gusta by Fibre ⚡ood

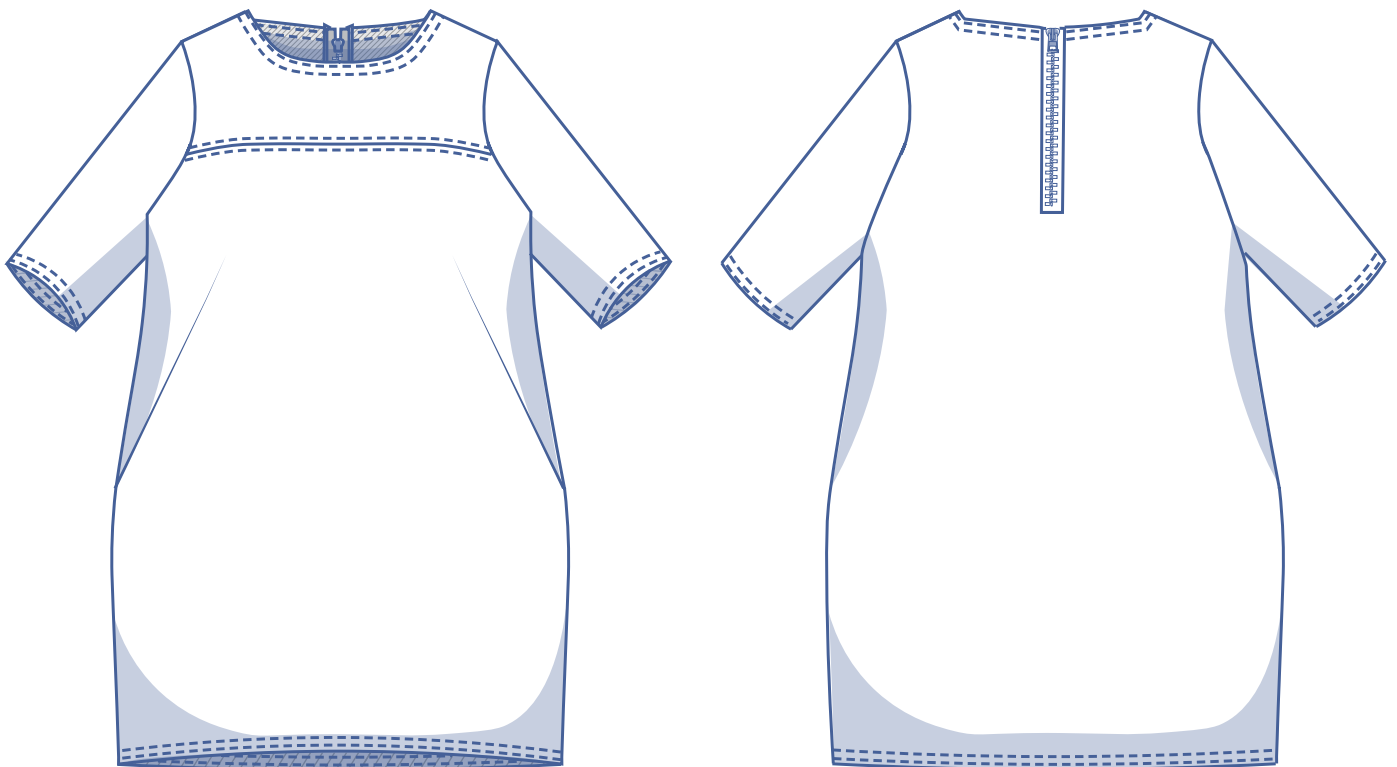


# Gusta by Fibre Mood



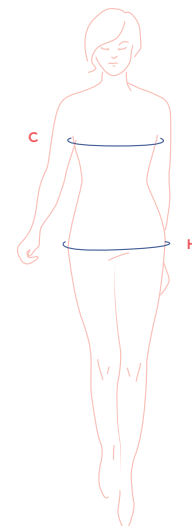
32 - 58

This suede, straight-cut dress with rounded neckline has convenient hidden seam pockets incorporated into the bust darts/French darts. Using suede means there's no need for overlocking the raw edges. If you do go for a fabric that frays, use the attached neckline facing pieces and finish the raw edges. Take a look at 'pattern pieces and seam allowances' to find out how you should get started.



## size chart

size (EU)	32	34	36	38	40	42	44	46	48	50	52	54	56	58
UK	4	6	8	10	12	14	16	18	20	22	24	26	28	30
US	0	2	4	6	8	10	12	14	16	18	20	22	24	26
B (cm)	76	80	84	88	92	96	100	104	110	116	122	128	134	140
B (inches)	29.9	31.5	33.1	34.6	36.2	37.8	39.4	40.9	43.3	45.7	48	50.4	52.8	55.1
H (cm)	86	90	94	97	100	103	106	109	115	120	125	130	135	140
H (inches)	33.9	35.4	37	38.2	39.4	40.6	41.7	42.9	45.3	47.2	49.2	51.2	53.1	55.1



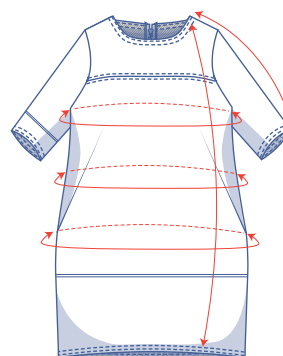
**Bust (B):** measure horizontally around the widest part of the bust.

**Hips (H):** measure horizontally around the widest part of the lower body.

Choose your size based on your bust measurement. If your hips are wider than the corresponding hip measurements in the size chart, look at the chart below with hip measurements to see whether there's enough room at the hips or if the hip measurements will need to be altered. It's easy to do. Just trace the pattern, and instead of tracing the line for the smaller size, trace the line for the larger size.

## finished garment measurements (in cm)

This chart's measurements are the pattern measurements based on the fabric type and serve as a reference. Ease has been added to the width measurements (in addition to the exact body measurements) for a more comfortable fit and to achieve a particular cut (fitted, loose, oversized). Depending on what you prefer, you could possibly go a size smaller or larger than the 'right' size according to your body measurements.



size	32	34	36	38	40	42	44	46	48	50	52	54	56	58
length	88.5	89.25	89.75	90.25	90.75	91.25	94	94.5	98.25	99	99.75	100.75	101.5	102.25
sleeve length*	41	41.75	42.25	43	43.5	44	44.75	45.25	47.5	48.25	48.75	49.5	50	50.75
chest	84.5	88.5	92.5	96.5	100.25	104.25	108.25	112	118.5	124.5	130.25	136.25	142	147.75
waistline	85.5	90	94	97.5	101.5	105	109	113	118.5	124	130	135.5	141	147
hips	92	96	100	103	106	109	112	115	119.75	124.75	129.75	134.75	140	145

\* Including the shoulder length.

Compare the stated lengths to the measured or desired lengths. **Lengthen** or **shorten** the dress and/or the sleeves by cutting the pattern pieces at the indicated double lines and then spreading the pattern pieces out X cm from each other or overlapping them where necessary. Make sure that the CF and CB lines and the side seams are always straight.



### IMPORTANT

Adjust the amount of fabric based on these alterations.

## fabric advice



Depending on the look you want, you can use various types of fabrics, including woven and knits. Interlock (e.g., Ponte Roma), jacquard jersey, and neoprene could also make for a lovely Gusta. We used a fairly heavy, soft sueded jersey. Find out all the facts about the Fibre Mood fabric collection and the accompanying fabric layouts [here](#) or on [www.fibre mood.com/en/fabrics](http://www.fibre mood.com/en/fabrics).

## supplies



- Thread
- Iron-on interfacing: 30 cm
- Zip: 25 cm
- Double-sided tape (for taping seams)
- Fabric: see table

fabric used (in cm) F collection	32	34	36	38	40	42	44	46	48	50	52	54	56	58
khaki suede fabric width 150 cm	135	135	140	140	140	145	150	155	165	210	215	220	225	225

Discover the Fibre Mood fabric collection and the accompanying fabric layouts [here](#) or on [www.fibre mood.com/en/fabrics](http://www.fibre mood.com/en/fabrics).

fabric used (in cm) standard	32	34	36	38	40	42	44	46	48	50	52	54	56	58
fabric width 140 cm	155	155	155	155	160	160	165	210	225	230	230	235	240	240

The corresponding fabric layout can be found on the last page of these sewing instructions.



# sewing instructions



The method used to finish sewing the garment depends on the fabric used.

This fabric used doesn't fray, so there's no need for finishing or overlocking. Don't forget to finish the raw edges with overlock stitching if you do decide to use a fabric that frays and use the attached neckline facing pattern pieces.

The pieces are always sewn together with the right sides of the fabric together, unless stated otherwise.

F front

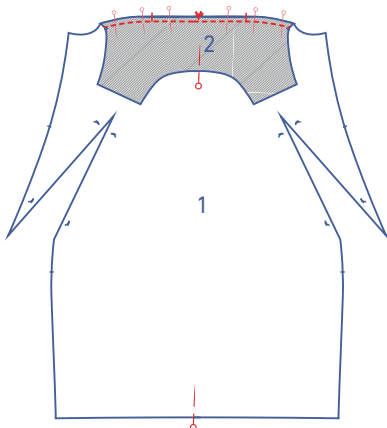
B back

CF centre front

CB centre back

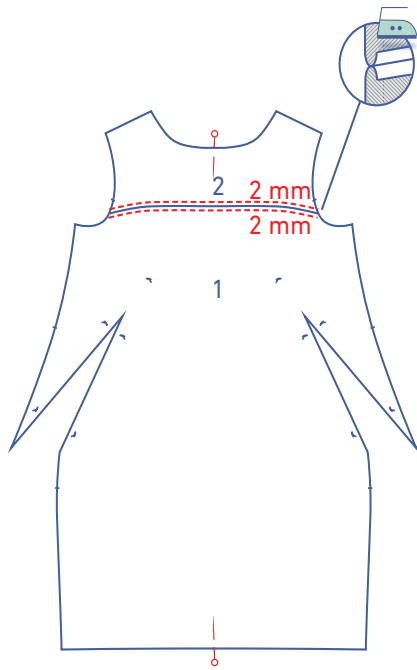
 right side

 wrong side

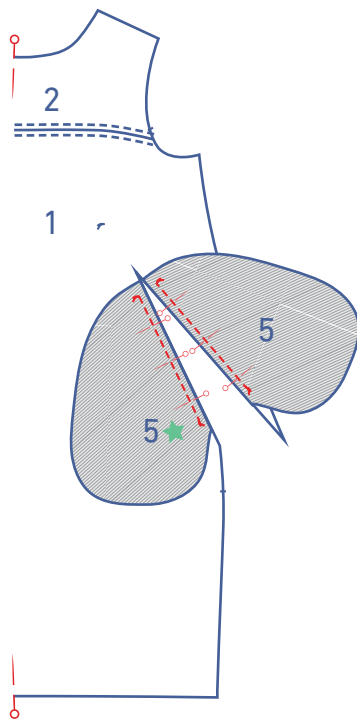


**1**

Pin and sew the top front piece (2) to the front (1) with the corresponding nicks matching.



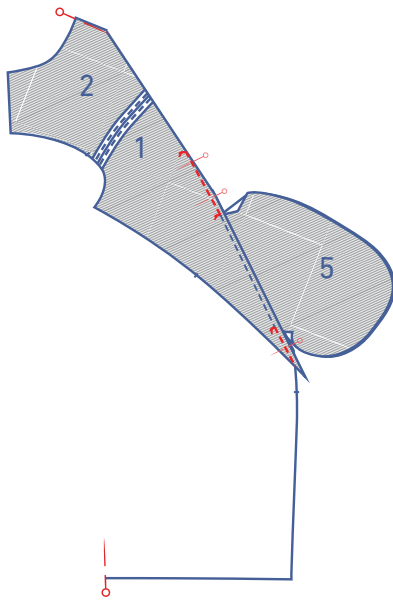
Press open the seam allowance and top stitch at 2 mm from the top and bottom of the seam.



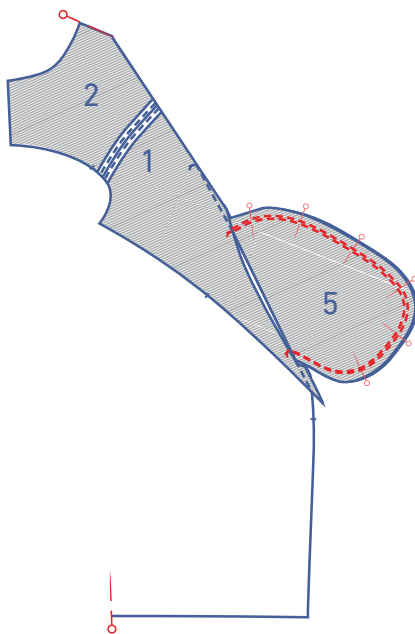
Pin the pocket pieces (5) to the front with the basting threads matching. Sew into place between the 2 basting threads.



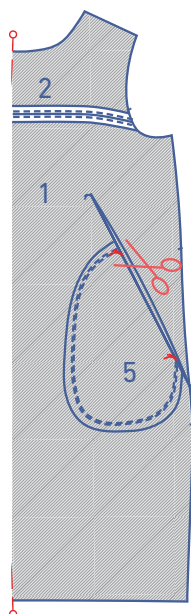
Fold the inner pocket bag (indicated with a green star) and the underlying seam allowance away from the dress and sew the inner pocket bag at 2 mm from the seam through all layers of fabric (inner pocket bag + underlying seam allowance).



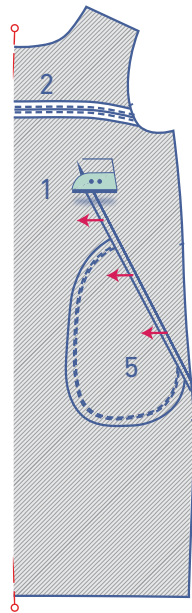
Fold the basting of the front (1) together. Sew the bust dart/French dart directly above and below the pocket opening always right up to the basting threads. Move the seam allowances of the pocket pieces out of the way, so that you can sew right to the basting threads.



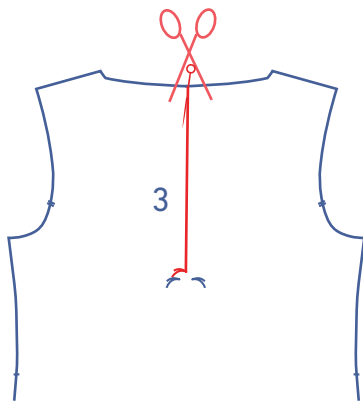
Pin and sew both pocket pieces together. To do this, move the seam allowance of the front out of the way. Add another row of stitching right next to the previous stitching.



Start cutting into the seam allowance from the top basting thread of the pocket to the basting thread of the bust dart/French dart, so that you can neatly press the seam allowance of the pocket flat.

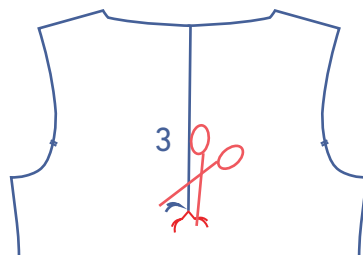


Afterwards, press the seam allowance of the pocket and the bust dart/French dart towards the CF.



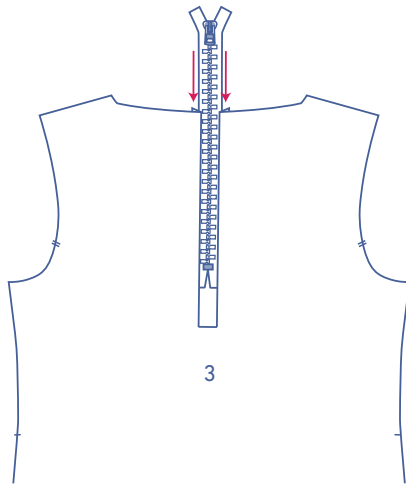
## 2

Cut along the CB line down to the basting thread. Next, snip two diagonal lines on either side of this point to the two bottom basting threads.

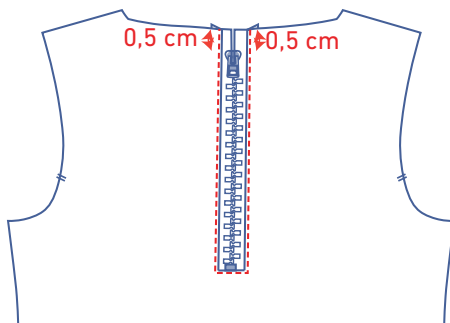


Fold and tape the seam allowance on either side 0.5 cm over to the wrong side using double-sided tape.

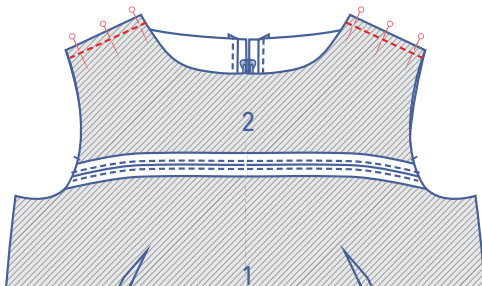




Place the back with the right side facing up towards you and slide the closed zip with the right side facing up under the back.

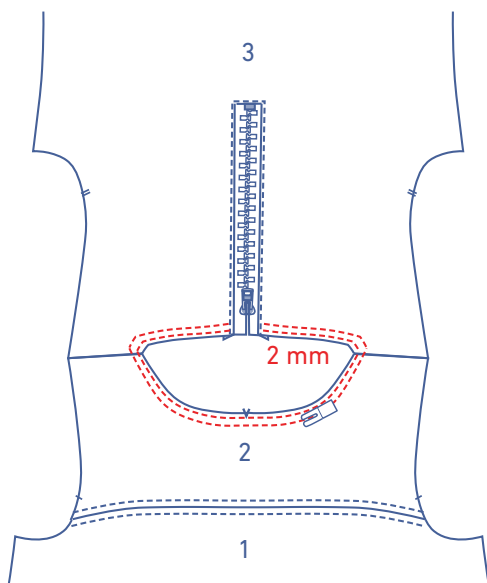


Place the zip teeth 0.5 cm (1.5 cm if you're using neckline facing) under the top edge of the back. Pin or tape the zip tape to the back. Sew the zip in place in a U shape with the narrow presser foot.

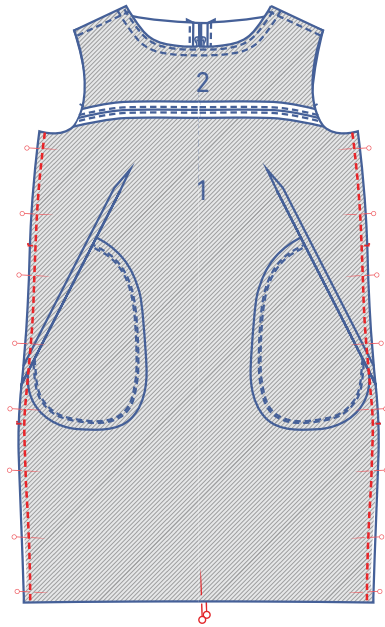


### 3

Pin and sew the shoulder seams. Press open the seam allowance.

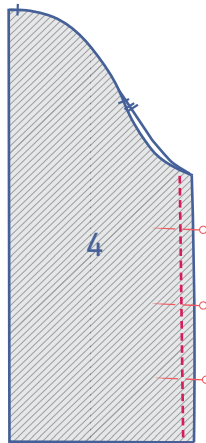


Finish the neckline right next to the edge using two rows of top-stitching. If you're using fabric that frays, finish the neckline off with neckline facing.



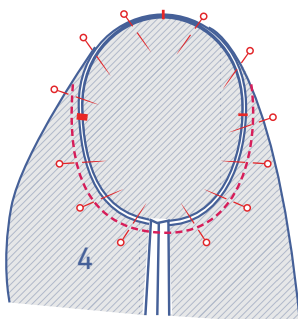
**4**

Pin and sew the side seams into place. Press open the seam allowance.

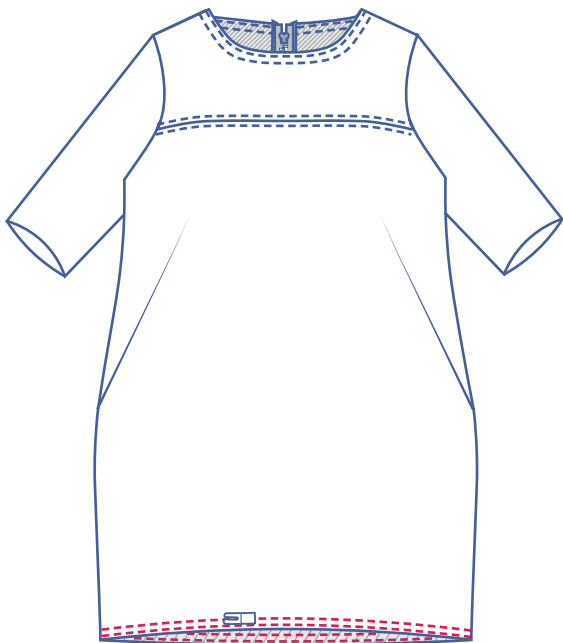


**5**

Fold the sleeve in half, with the right side facing inwards. Pin and sew the sleeve sides.

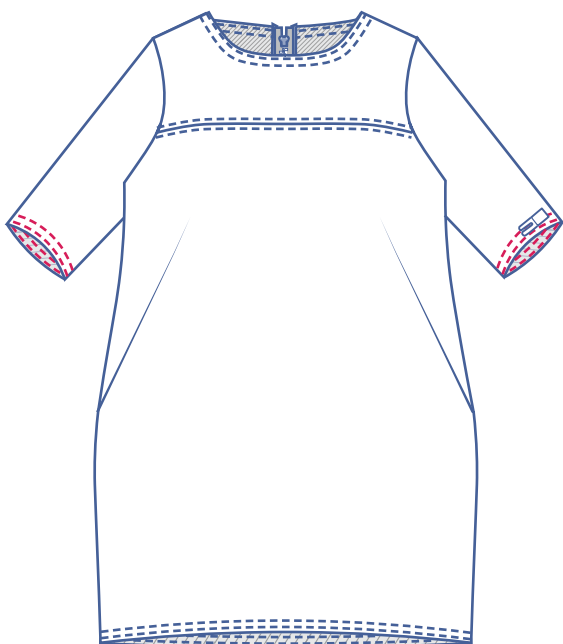


Pin the sleeve cap to the armhole with the corresponding nicks matching. The single sleeve nick should match the single nick on the front, and the double nicks on the sleeve should match the double nicks on the back. The top single sleeve nick matches the shoulder. Distribute the remaining fabric between the nicks. Sew into place.



## 6

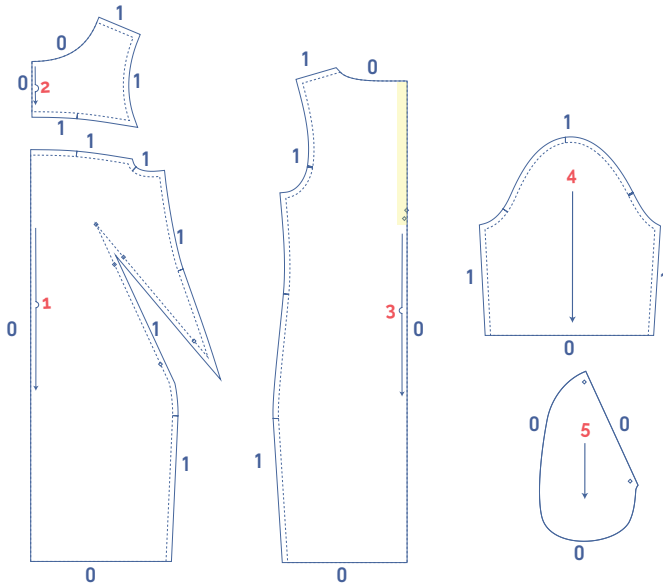
Use two rows of top-stitching to sew along the hems. If using fabric that frays, fold the hem allowance over at all the V notches and sew the hem allowance into place.



## pattern pieces & seam allowances (in cm)

To prepare the pattern before cutting you must first add the illustrated seam allowances around the paper pattern pieces as shown below.

### 1. for fabrics that don't fray

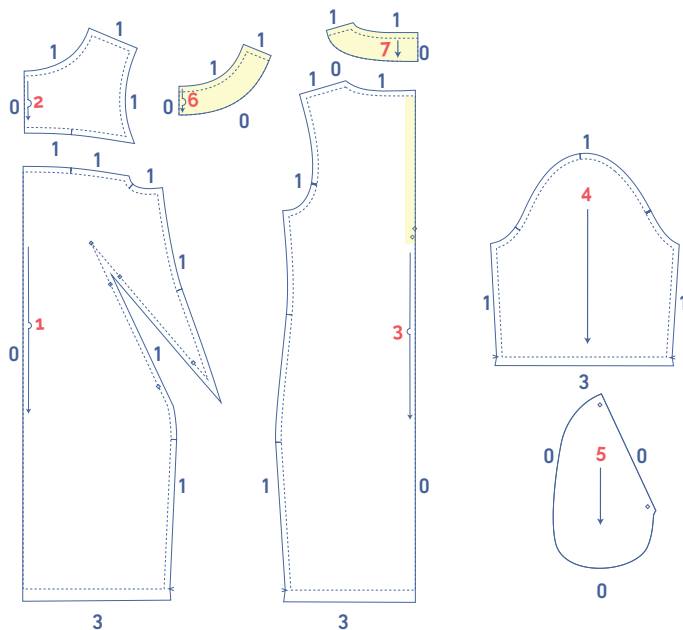


**IMPORTANT**

The pieces highlighted in light yellow have iron-on interfacing attached to the wrong side.

1. front: 1x on fabric fold
2. top front: 1x on fabric fold
3. back: 1x on fabric fold
4. sleeve: 2x
5. pocket: 4x

### 2. for fabrics that fray



1. front: 1x on fabric fold
2. top front: 1x on fabric fold
3. back: 1x on fabric fold
4. sleeve: 2x
5. pocket: 4x
6. facing front: 1x on fabric fold
7. facing back: 2x

# fabric layout for fabrics 140 cm wide

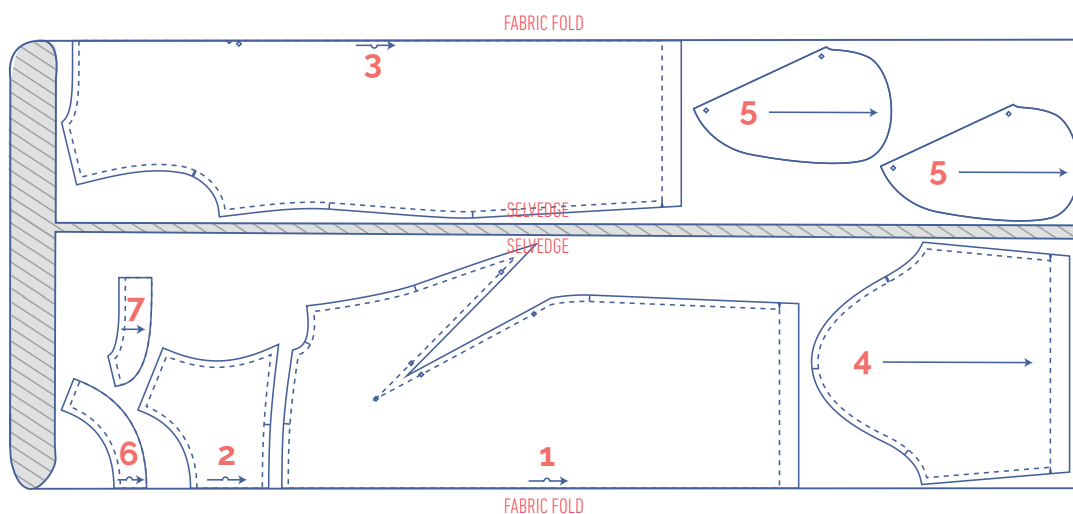
Before we begin sewing, make sure to transfer all markings onto your fabric:

- Nick the pattern paper and fabric at the places where a single vertical line (I) and double vertical lines (II) are indicated.
- Cut a notch out of the fabric at a V notch symbol or on the finished hemline.
- To mark the middle of the pieces, pin and sew the neckline and hem at the CF and CB.

Indicate crucial points on the pattern:

- Mark the pivot point of the bust dart/French dart, the location of the pockets and the tip of the cutting line on the CB line and the corners of the zip opening by hand with basting thread (↯) by basting through the middle of the (◊).

## 32 - 44



## 46 - 58

