

# Faye by Fibre ⚡ood

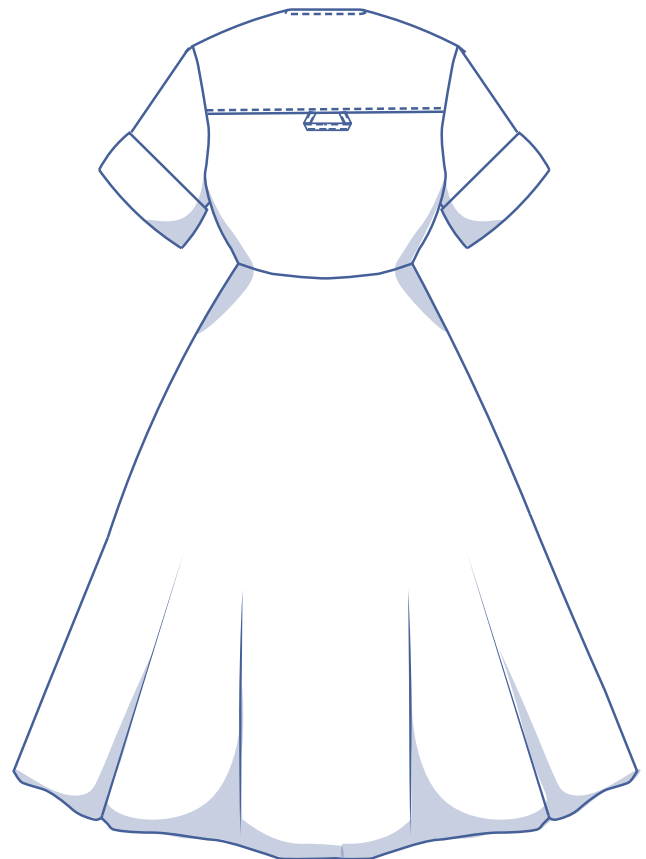
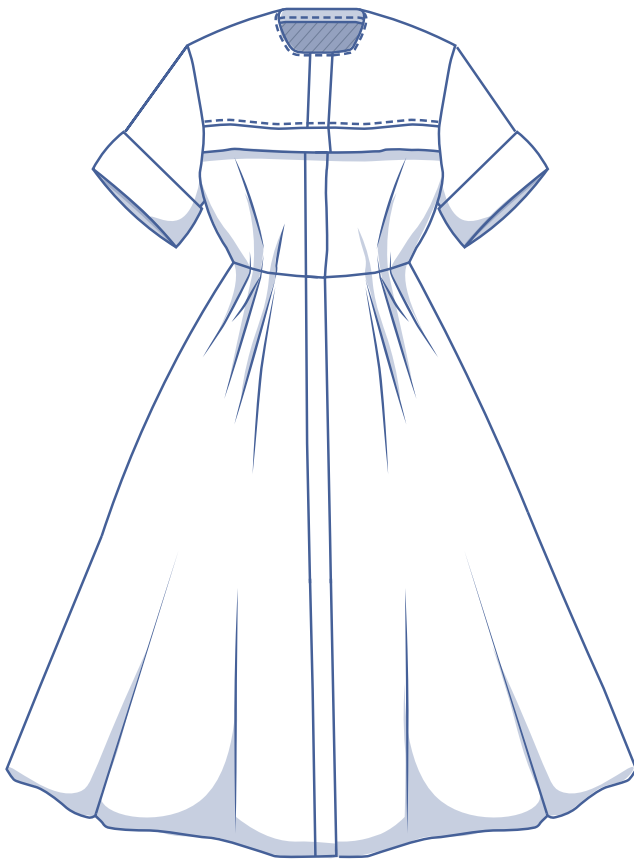


# Faye by Fibre ⚡ood



32 - 58

Day-dresses are not just for the Summer months! Make Faye in warm and earthy tones, like ochre and you have the perfect trans-seasonal dress! It features a hidden button placket, discreet pockets in the side seams and short flared sleeves with cuffs. Add the perfect circle skirt with front pleats and you have a classic day-dress. Horizontal front seams give it a workwear twist!



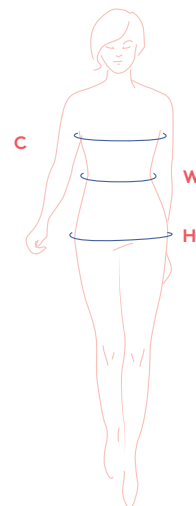
## size chart

size (EU)	32	34	36	38	40	42	44	46	48	50	52	54	56	58
UK	4	6	8	10	12	14	16	18	20	22	24	26	28	30
US	0	2	4	6	8	10	12	14	16	18	20	22	24	26
B (cm)	76	80	84	88	92	96	100	104	110	116	122	128	134	140
W (cm)	66	68	70	74	78	82	84	88	94.5	101	107.5	114	120.5	127
H (cm)	86	90	94	97	100	103	106	109	115	120	125	130	135	140

**Chest (C):** measure horizontally around the sm part of the chest.

**Waist (W):** measure horizontally at the smallest point of the waist.

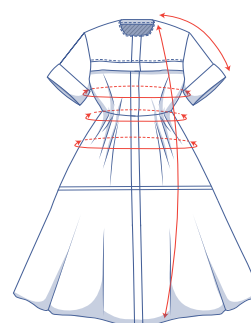
**Hip (H):** measure horizontally around the widest part of the lower body.



Choose your size based on your bust measurement. If your waist and hip measurements are wider than the corresponding measurements in the size chart, look at the chart below with waist and hip measurements to see whether there's room at the waist and hips or whether the measurements will need to be altered. It's easy to do. Just trace the pattern, and instead of tracing the line for the smaller size, merge it with the line for the larger size.

## finished garment measurements(in cm)

The measurements in this table are the pattern measurements and serve as a reference guide. Ease has been added to the width measurements (in addition to the exact body measurements) for a more comfortable fit and to achieve a particular cut (fitted, loose or oversized). Depending on the preferred cut, you could possibly go a size smaller or larger than the 'right' size according to your body measurements.



size	32	34	36	38	40	42	44	46	48	50	52	54	56	58
length	131	131.5	132	132.75	133.25	133.75	134.25	134.75	136.75	137.5	138.25	139	139.75	140.75
sleeve length*	40.5	41.25	41.75	42.5	43	43.5	44.25	44.75	45	45.75	46.5	47.25	48	48.5
chest	88.75	92.5	96.25	100	103.75	107.5	111.25	115	121.75	127.25	132.75	138.25	143.5	149
waistline**	66.25	68.25	70	74.25	78.5	82.5	84.5	88.75	94.5	101.25	108.25	115	121.5	128.25
hips***	131.25	133	134.75	138.5	142.25	146.25	148	151.75	157.25	163.5	169.5	175.75	181.5	187.5

\* Including the shoulder length.

\*\* Without pleats.

\*\*\* Including pleats.

Compare the stated lengths to the measured or desired lengths. **Lengthen** or **shorten** the dress and/or sleeves by cutting the pattern pieces at the indicated double lines and then spreading the pattern pieces out X cm from each other or overlapping them where necessary. Make sure that the CF and CB lines and the side seams are always straight.



### IMPORTANT

Adjust the amount of fabric based on these alterations.

## fabric advice



The Faye dress works best in a stable fabric like cotton that accentuates all the details. Find out all the facts about the Fibre Mood fabric collection and the accompanying fabric layouts [here](https://www.fibre mood.com/en/fabrics) or on [www.fibre mood.com/en/fabrics](https://www.fibre mood.com/en/fabrics).

## supplies



- Thread
- Iron-on interfacing: max 100 cm
- Buttons (Ø 1.1 cm): 8
- Fabric: see table

fabric used (in cm) F collection	32	34	36	38	40	42	44	46	48	50	52	54	56	58
ochre-coloured cotton fabric width 147 cm	345	350	355	365	370	380	395	400	425	445	455	470	475	485

Discover the Fibre Mood fabric collection and the accompanying fabric layouts [here](https://www.fibre mood.com/en/fabrics) or on [www.fibre mood.com/en/fabrics](https://www.fibre mood.com/en/fabrics).

fabric used (in cm) standard	32	34	36	38	40	42	44	46	48	50	52	54	56	58
fabric width 140 cm	360	365	370	380	395	400	410	420	445	455	465	480	490	500

The corresponding fabric layout can be found on the last page of these sewing instructions.

# sewing instructions



The method used to finish sewing the garment depends on the fabric used. The pieces are always sewn together with the right sides of the fabric facing together, unless stated otherwise.

F front

B back

RF right front

LF left front



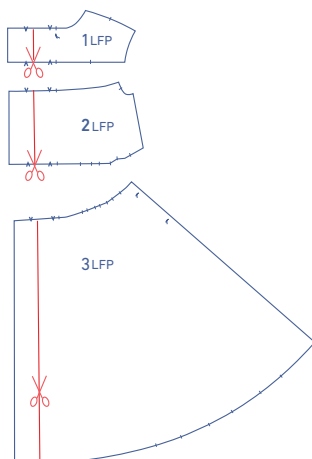
right side



wrong side

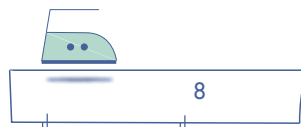
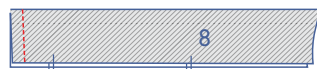
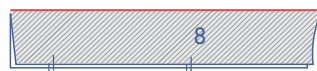


iron-on interfacing

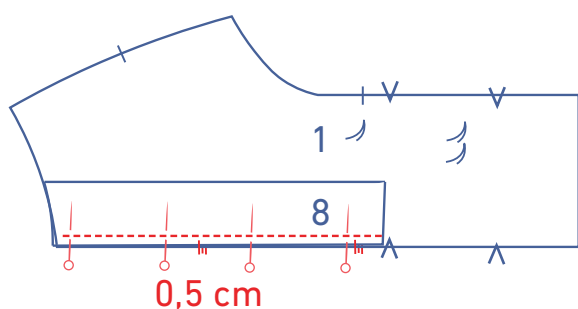


## 1

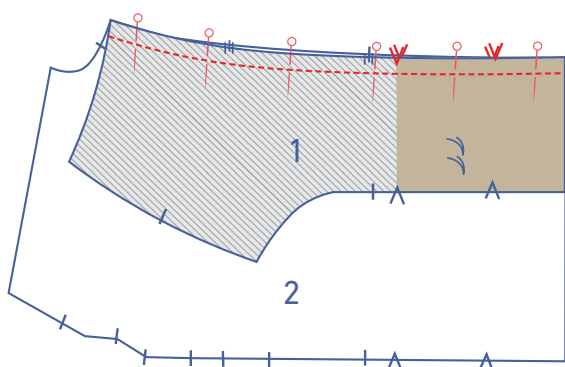
Cut off a section of all the pieces of the LF [top front (1), top front piece centre (2) and skirt front (3)] on the indicated cutting line.



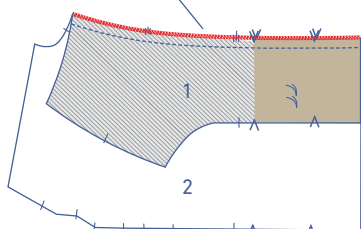
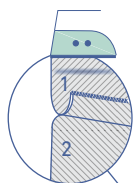
Fold the flap (8) in half lengthwise with the right side of the fabric facing inwards. Sew the short edge as indicated. Turn right side out and neatly press flat.



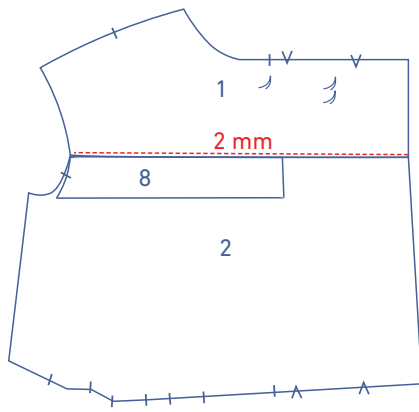
Pin and sew both raw edges of the flap to the bottom of the top front piece with the corresponding nicks matching. The finished edge of the flap should line up with the first V notch. Sew into place at 0.5 cm from the raw edge.



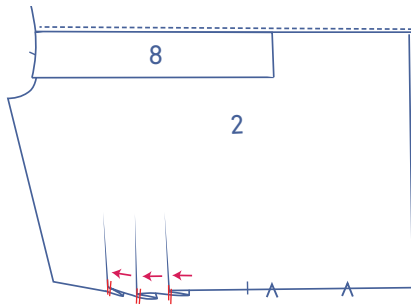
Pin and sew the top front piece centre to the top front piece with the corresponding nicks matching.



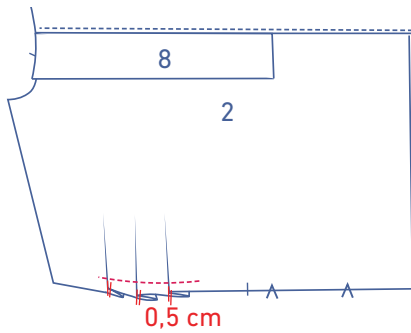
Finish the raw edges together with overlock stitching and press the seam allowance up.



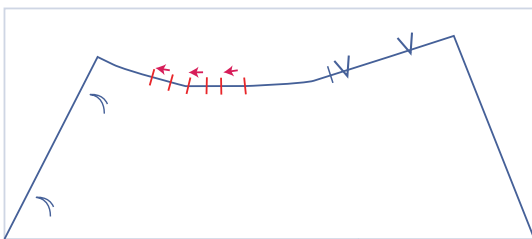
Top stitch the top front piece at 2 mm from the seam, sewing through all layers (top front piece + seam allowance).



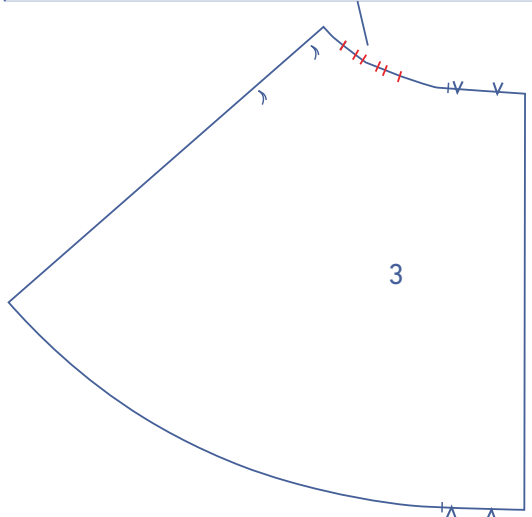
Shape the pleats of the top front piece by overlapping each of the nicks at the bottom towards the side seam.

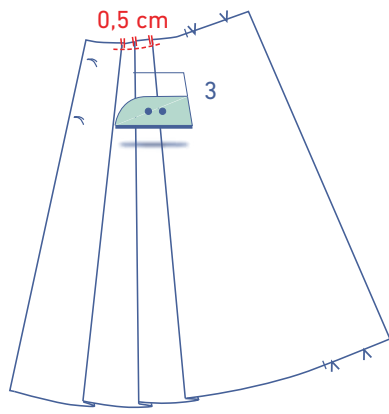


Sew the pleats horizontally into place at 0.5 cm from the raw edge.

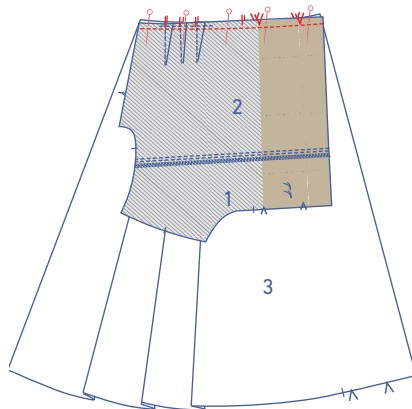


Shape the pleats of the skirt by overlapping each of the nicks at the top towards the side seam.

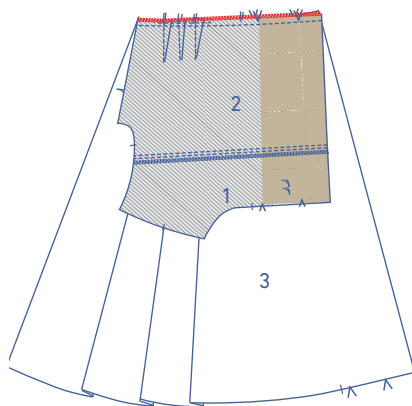




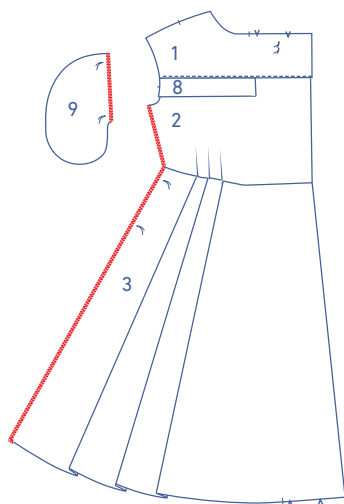
Sew the pleats at the top into place at 0.5 cm from the raw edge.



Pin and sew the top front piece to the skirt front with the corresponding nicks and pleats perfectly aligned.

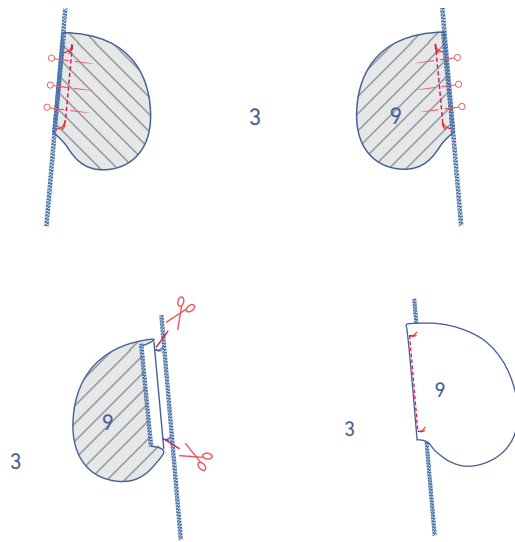


Finish the raw edges together with overlock stitching. Press the seam allowance towards the top.



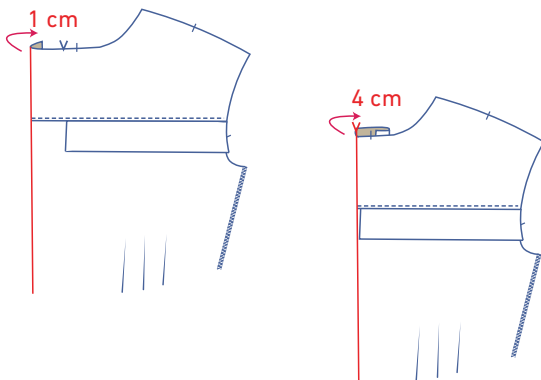
Finish the side seam and the right side of the pocket pieces (9) with overlock stitching.



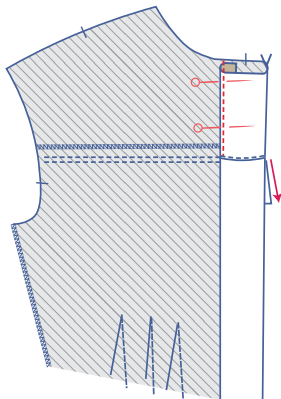


Pin the right-hand side of the pocket to the side seam of the skirt front with the basting threads matching. Sew into place between the basting threads.

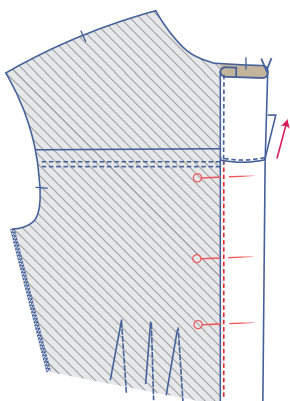
Fold the seam allowance of the pocket back over towards the pocket and cut diagonally into the seam allowance of the front up to the basting thread. Fold the pocket and the seam allowance away from the dress and understitch at 2 mm from the seam, sewing through the pocket and underlying seam allowances.



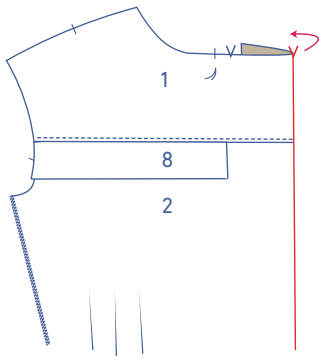
First, press the left front on the CF 1 cm over to the wrong side. Next, press a second time, this time to the V notches at the top and bottom.



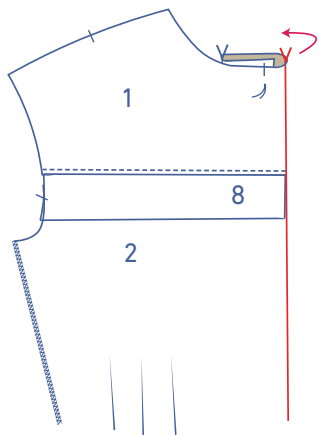
First, flip the flap down to sew the placket above the flap into place. Sew into place right next to the edge up to the flap stitching.



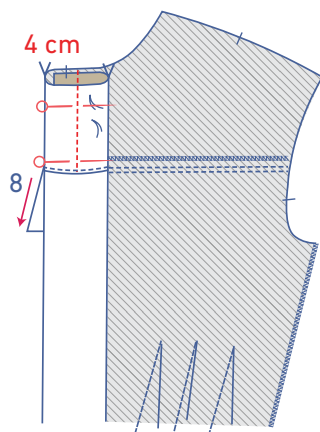
Next, flip the flap up. Continue sewing the placket into place right next to the edge up to the hem.



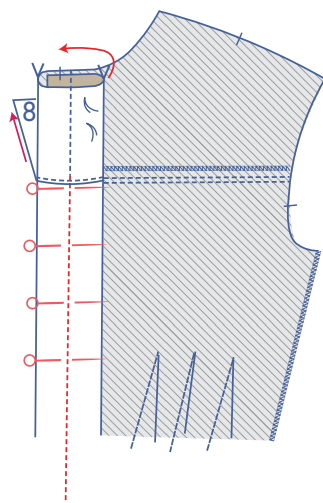
Press the RF over at the outermost V notches at the top and bottom.



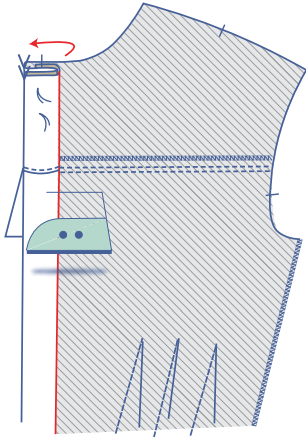
Press over again at the next v notch at the top and bottom



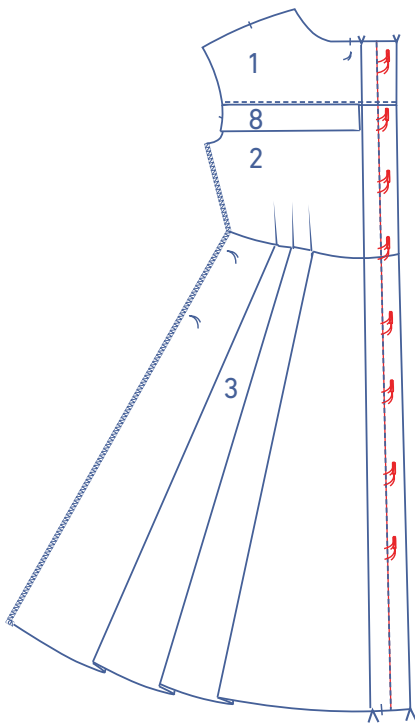
Flip the flap back down. Sew through all layers in the middle of the buttonhole placket (at 4 cm from the edge) until you reach the flap stitching.



Next, flip the flap up again and continue sewing through all the layers in the middle of the button placket (at 4 cm from the edge) until you've reached the hem.



Fold the buttonhole placket in half lengthwise at the stitching.



Create the buttonholes on the right section of the buttonhole placket. The top and bottom buttonholes are marked on the pattern. Distribute the remaining buttonholes evenly between the two.

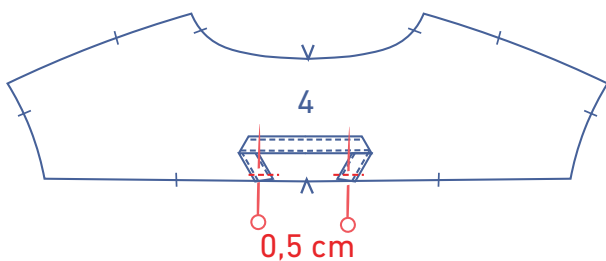


**2**

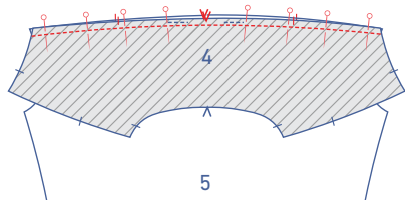
Fold the hanging loop (11) in half lengthwise with the right side of the fabric facing inwards. Sew the indicated side.



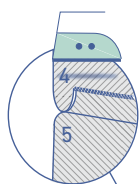
Turn the loop right side out. Top stitch the long sides right next to the edge.



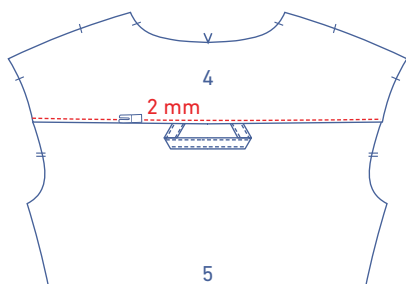
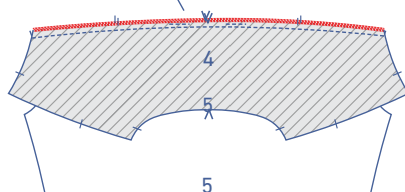
Pin the raw edges of the loop to the top back piece (4) at 3 cm either side of the V notch on the CB. Sew into place at 0.5 cm from the raw edge.



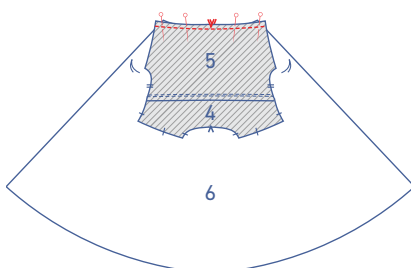
Pin and sew the back to the back top piece centre (5).



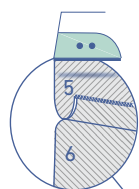
Finish the raw edges together with overlock stitching. Press the seam allowance towards the top back piece.



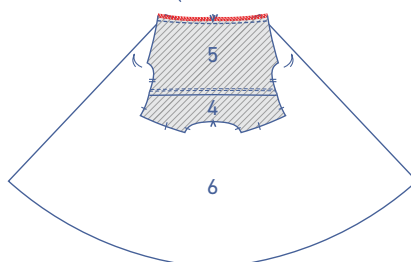
Top stitch the back top piece at 2 mm from the seam, sewing through all layers (back top piece + seam allowance). Flip the loop down.

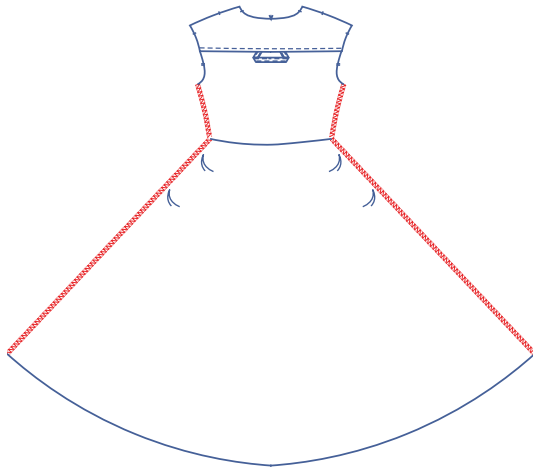


Pin and sew the back top piece to the skirt back (6).

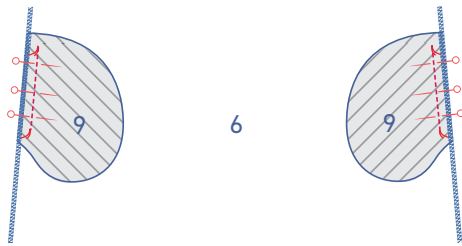


Finish the raw edges together with overlock stitching. Press the seam allowance towards the top.

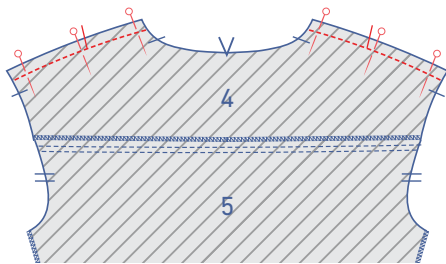




Finish the side seams of the back with overlock stitching.

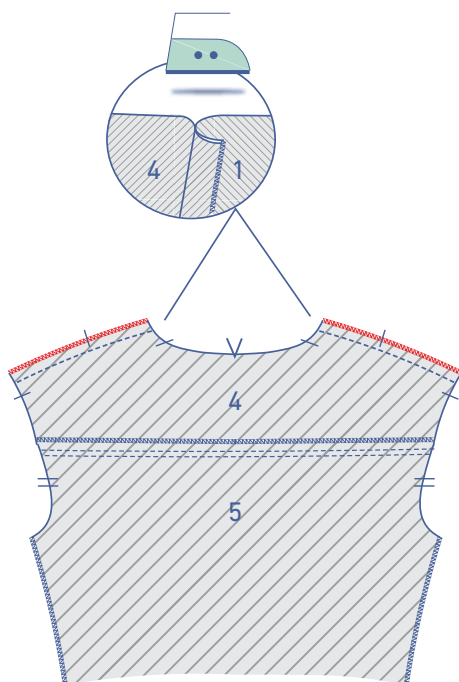


Pin the right-hand side of the pocket to the back with the basting threads matching. Sew into place between the basting threads.

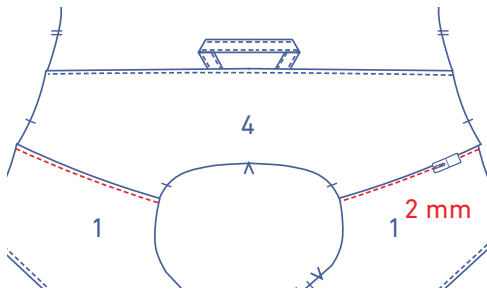


### 3

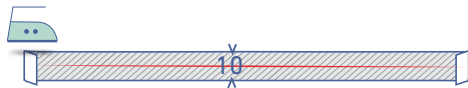
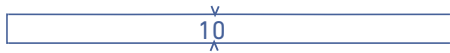
Pin and sew the shoulder seams.



Finish the raw edges together with overlock stitching and press the seam allowance towards the front.



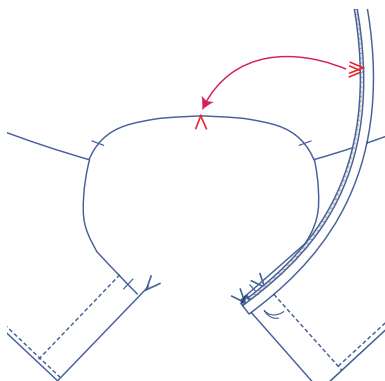
Top stitch the bodice p at 2 mm from the seam, sewing through all layers (top front piece + seam allowance).



## 4

Press the short ends of the neckline bias tape (10) 1 cm onto the wrong side.

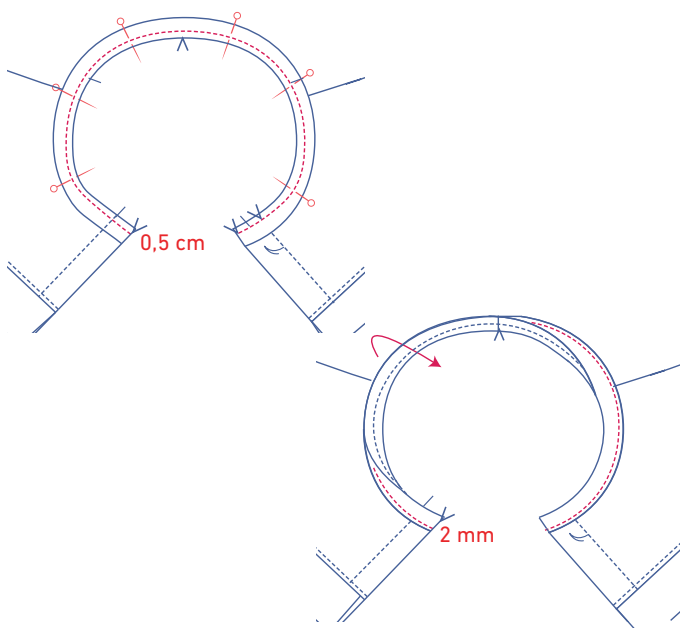
Press the bias tape in half lengthwise with the right side of the fabric facing outwards.



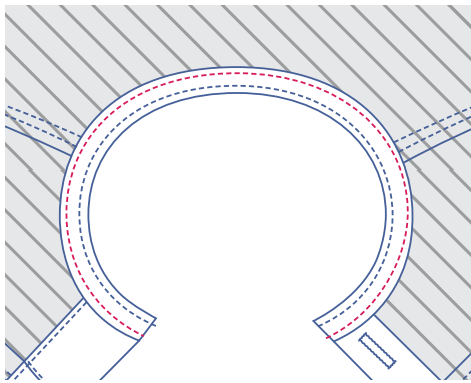
Pin both raw edges of the bias tape to the neckline along the right side of the dress with the V notches matching.

**PLEASE NOTE:** the stated bias tape lengths are merely indicative because the actual lengths depend on the fabric used. Pin the tape to the CB with the V notches matching and pin the rest of the tape around until you reach the CF, making sure all the while to tug lightly on the tape (gently stretching it). Be sure to add a 1 cm seam on either side of the CF. Trim the rest of the fabric and fold 1 cm of the seam allowance inwards all the way around.

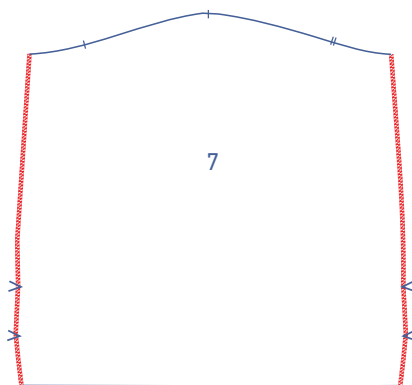
Sew into place at 0.5 cm from the raw edges.



Fold the bias tape and the seam allowance out of the way and sew the bias tape into place at 2 mm from the seam through all the layers of fabric.

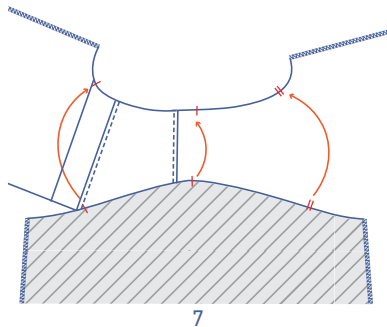


Fold the bias tape all the way over to the wrong side and sew into place right next to the fold line.

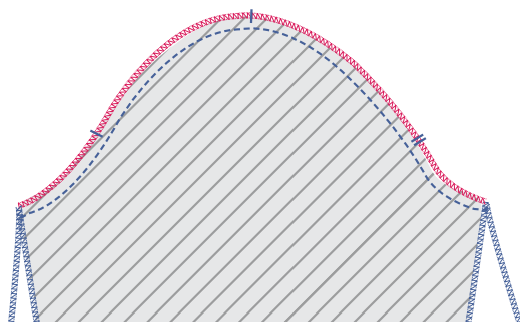
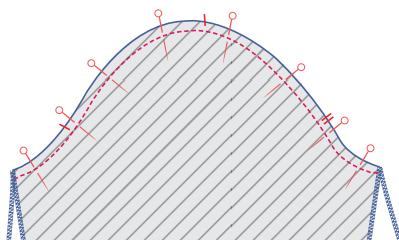


## 5

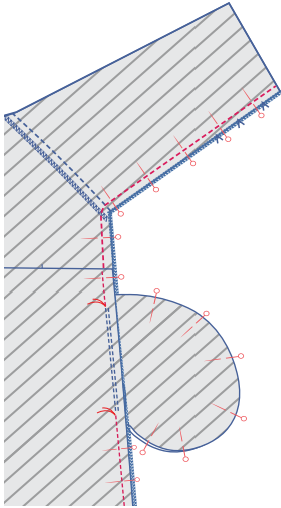
Finish the sides of the sleeve (7) with overlock stitching.



Pin and sew the top of the sleeve (= sleeve cap) to the armhole with the corresponding nicks matching. The single nick marks the front, while the double nicks mark the back. The central single nick should line up with the single nick on the back indicating the true shoulder. Distribute the remaining fabric evenly between the nicks.

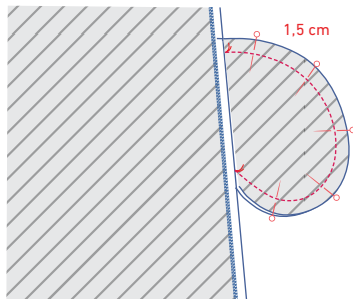


Finish both raw edges together with overlock stitching.

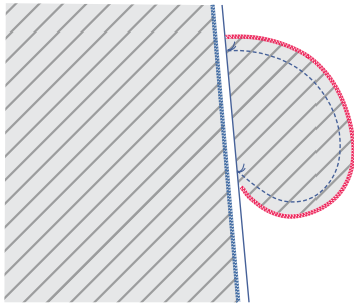


## 6

Pin the underarm and side seams into place. Sew right into the basting of the pocket, and then continue sewing from the second basting point to the hem.



Pin both pocket pieces together and sew at 1.5 cm from the raw edges. Move the seam allowances of the front and back out of the way, so that you can sew right to the basting threads.

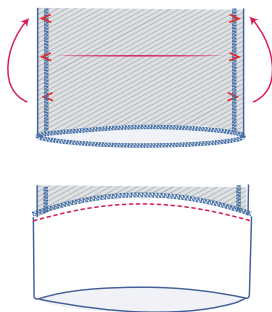


Finish the raw edges together with overlock stitching.



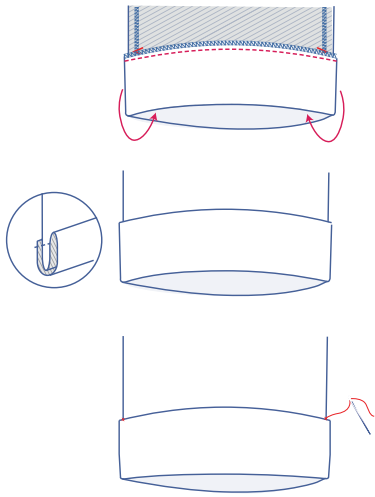
## 7

Finish the sleeve hem with overlock stitching.

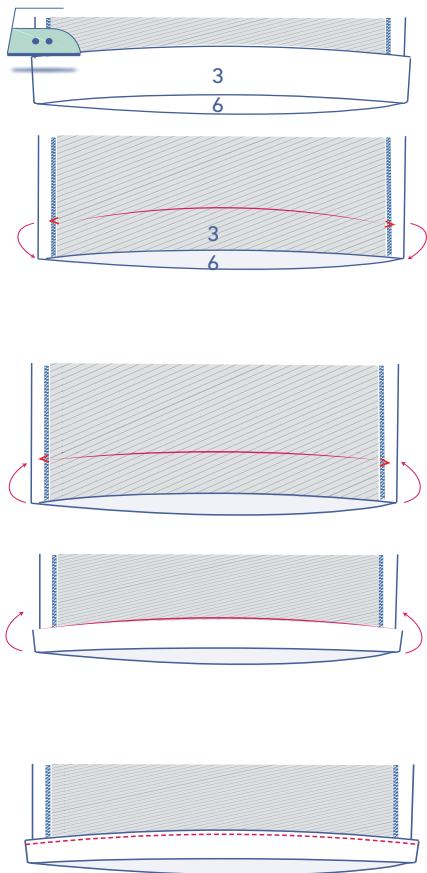


Press the hem over at the centre-most V notches and sew into place right next to the overlocked edge.





Fold the hem (= circumference) up and onto the right side of the sleeve to where the other V notches are and sew into place along the side seams.

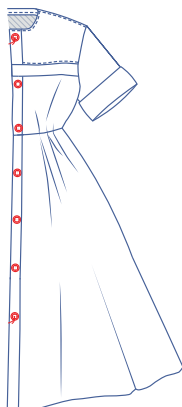


8

Press the hem allowance up at the V notches and then unfold.

Place the raw edge along the pressed fold line and then fold once again.

Sew into place next to the edge.

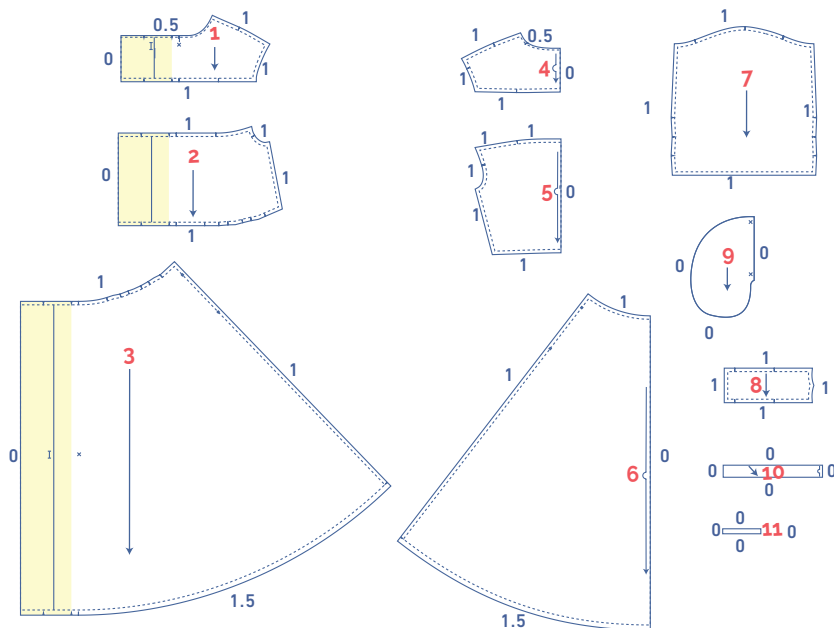


9

Sew the buttons on at the places indicated (properly aligned with the buttonholes). The buttons should be positioned at approximately the top 1/3 of the buttonholes.

## pattern pieces & seam allowances (in cm)

To prepare the pattern before cutting you must first add the illustrated seam allowances around the paper pattern pieces as shown below.



1. top front piece: 2x
2. top front piece centre: 2x
3. skirt front: 2x
4. top back piece: 1x on fabric fold
5. top back piece centre: 1x on fabric fold
6. skirt back: 1x on fabric fold
7. sleeve: 2x
8. flap: 2x
9. pocket: 4x
10. bias tape neck: 1x on fabric fold (on the bias)  
You will need to draw this pattern piece yourself using the measurements in the table (in cm).

**IMPORTANT**

The pieces highlighted in light yellow have iron-on interfacing attached to the wrong side.

size	32	34	36	38	40	42	44	46	48	50	52	54	56	58
height	3.5	3.5	3.5	3.5	3.5	3.5	3.5	3.5	3.5	3.5	3.5	3.5	3.5	3.5
width	27.5	28	28.5	29	29.5	30	30.5	31	31.75	32.5	33.25	34	34.75	35.5

11. hanging loop: 1x. Draw a 3x17 cm rectangle.

# fabric layout for fabrics 140 cm wide

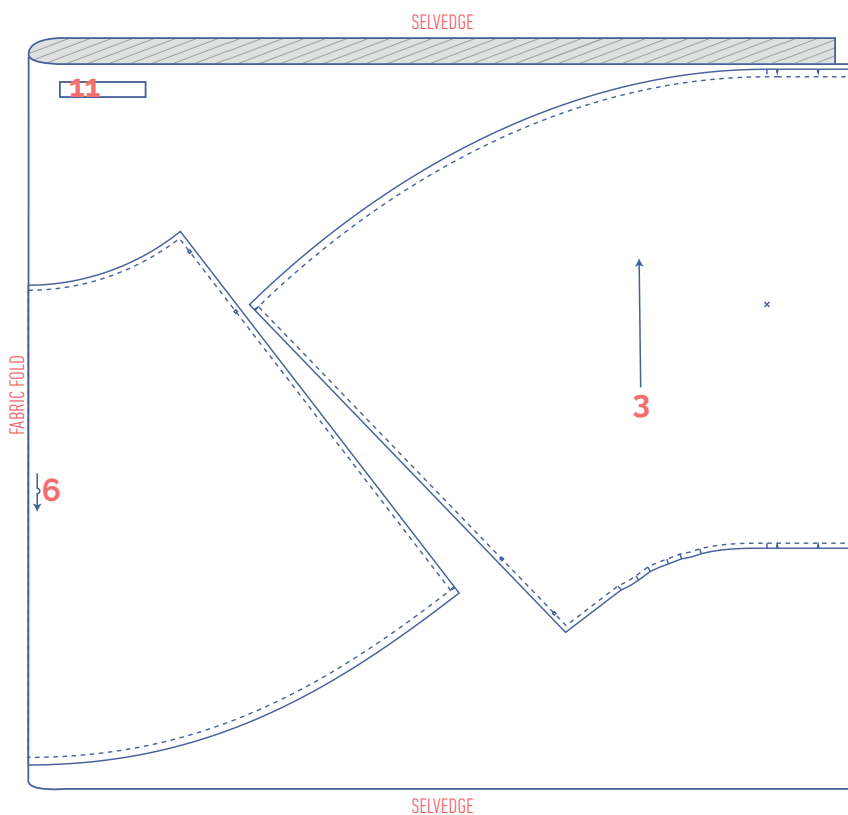
Before we begin sewing, make sure to transfer all markings onto your fabric:

- Mark the position of the buttons by hand with basting thread (↯) by basting through the middle of the (X).
- Mark the buttonholes ( ) with tacking thread ( ) by indicating the top and bottom with needle and thread.

Indicate crucial points on the outline of the pattern:

- Nick the pattern paper and fabric at the places where a single vertical line (I) and double vertical lines (II) are indicated.
- Cut a notch out of the fabric at a V notch symbol or on the finished hemline.
- Cut a notch out of the pieces that lie on the fabric fold to mark the middle of these pieces.

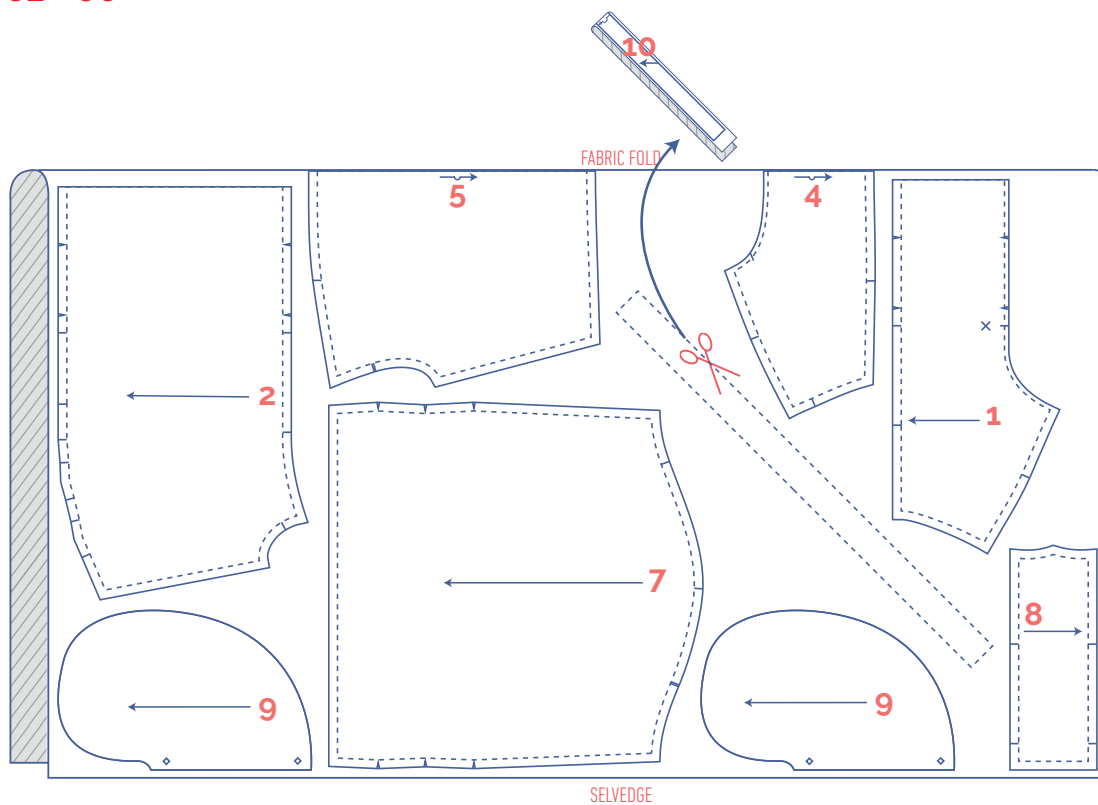
**32 - 58**



## IMPORTANT

You only need pattern pieces 11 once.

32 - 38



40 - 46

