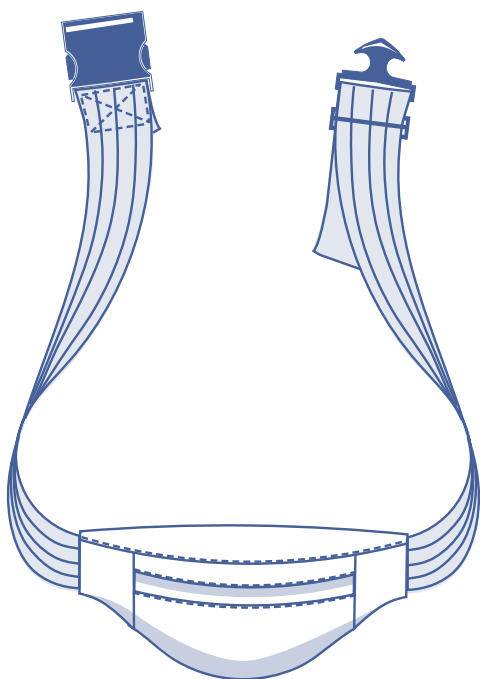


Etta by Fibre ood





Etta Bag by Fibre ⚡ood



Click and go! Bum bags are trending again! So you can say goodbye to heavy shoulder bags and hello to the hands-free bum bag. There is so much room for play when choosing fabric for your Etta! Sew it up in a earthy corduroy for Autumn or make a statement with printed raincoat fabric.

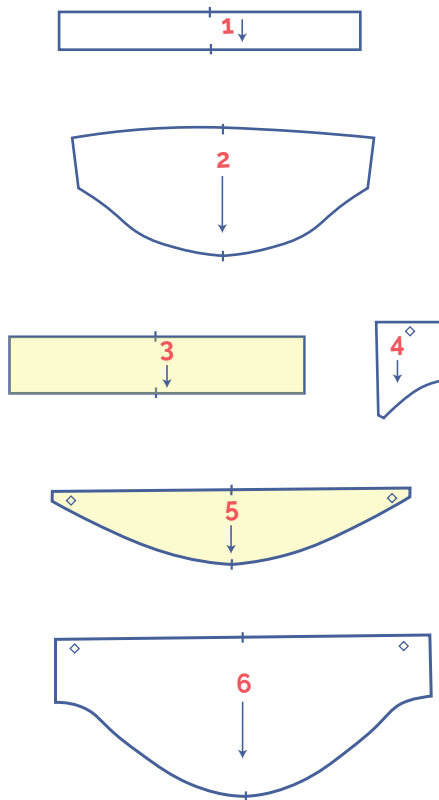
supplies



- Fabric: 25 cm
- Iron-on interfacing: 25 cm
- Zip: 30 cm
- Clip buckle (width 4 cm)
- Strap (4 cm wide): 95 cm
- Thread
- Pattern: find it in black on pattern sheet B blue or download it on www.fibremood.com



pattern pieces & seam allowances (in cm)



1. front top piece: 1x
2. bottom front piece: 1x
3. flap: 1x
4. side piece: 2x
5. top: 1x
6. back: 1x

IMPORTANT

The pieces highlighted in light yellow have iron-on interfacing attached to the wrong side.

NOTE

The pattern pieces include a 1 cm seam allowance unless shown as otherwise.

Mark the indicated points on the pattern by hand with a basting thread (↯).

Nick the pattern paper and fabric at the places with a single vertical line (|).

sewing instructions



Print the pattern at 100% resolution and assemble your pattern pieces together. The pieces are always sewn together with the right sides of the fabric matching, unless stated otherwise.



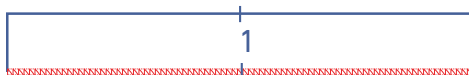
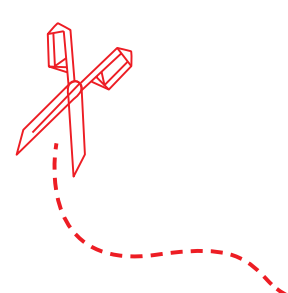
right side



wrong side



iron-on interfacing



1

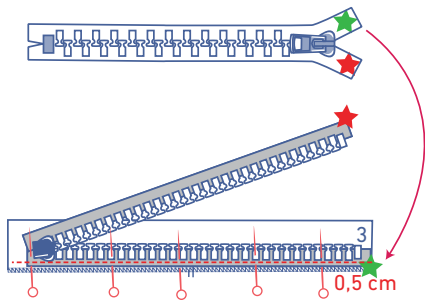
Finish the lower edge of the front top (1) with overlock stitching.



2

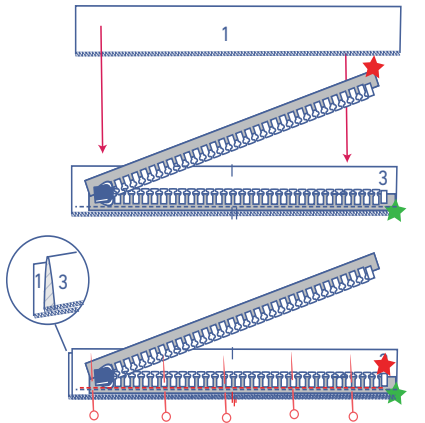
Fold the flap (3) in half lengthwise with the right side of the fabric facing inwards and stitch the short ends. Turn right side out and finish the raw edges together with overlock stitching.





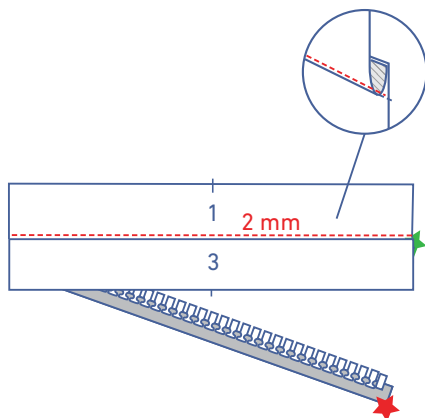
3

Pin and sew the edge of the zip tape indicated (green star) against the overlocked raw edges of the flap at 0.5 cm from the edge with the right sides facing. Make sure that the zip is nicely centred.



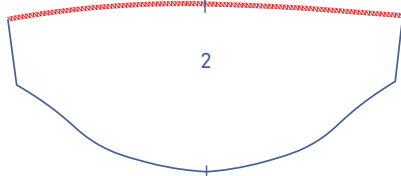
4

Pin and sew the flap + zip to the straight side on the bottom of the front top piece, making sure that the nicks are matching. You will have 1 cm of seam allowance left over on each side of the flap.



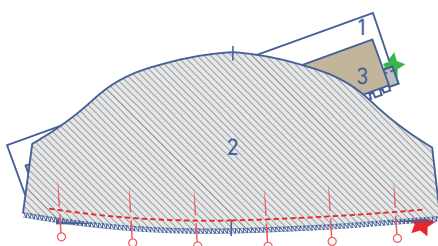
5

Fold the flap + zip down and fold the seam allowance of the front top piece up. At 2 mm from the seam, understitch through the layers of the top front piece and underlying seam allowance.



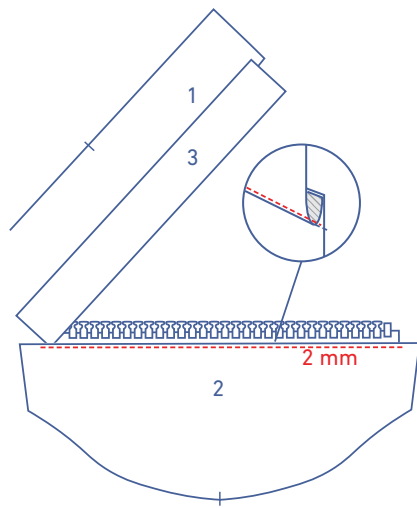
6

Finish the straight side of the top of the front (2) with overlock stitching.



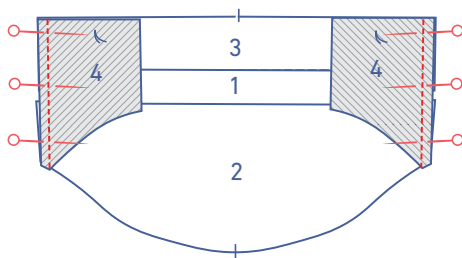
7

Pin and sew the other zip tape on this side of the front at the lower edge. You will have 1 cm of seam allowance left over on each side.



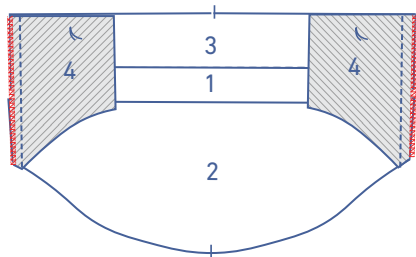
8

At 2 mm from the seam, sew through all layers (top front piece + underlying seam allowance) of the top front piece. Fold the zip teeth up and the seam allowance away from the zip and top-stitch the front at 2 mm through all layers.



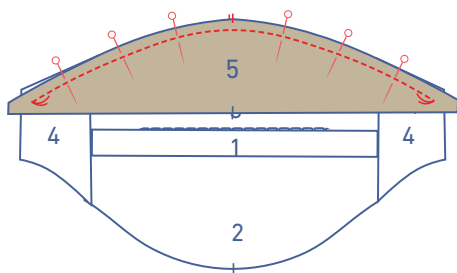
9

Pin and sew the side pieces (4) on both sides of the front.



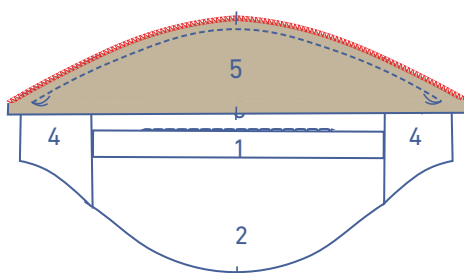
10

Finish the raw edges together with overlock stitching.



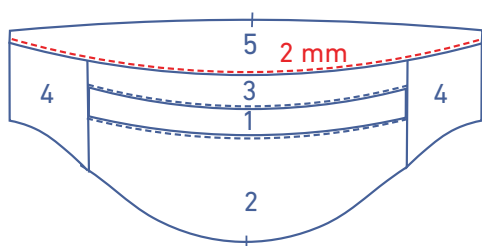
11

Pin the curved edge of the top (5) to the front + side pieces with the basting threads matching. Sew into place right up to the basting threads.



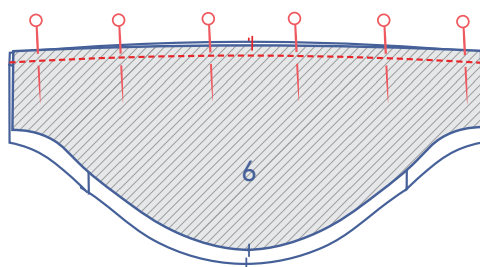
12

Finish the raw edges together with overlock stitching.



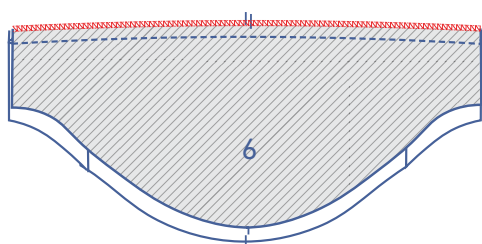
13

Fold the seam allowance upwards and stitch the top at 2 mm from the edge through all layers of fabric.



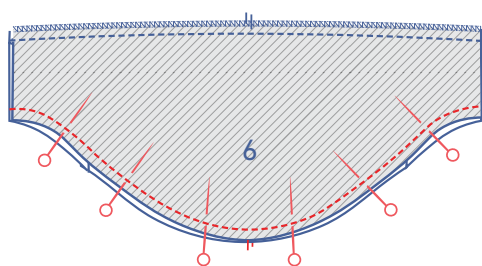
14

Pin and sew the straight side of the top to the top of the back (6).



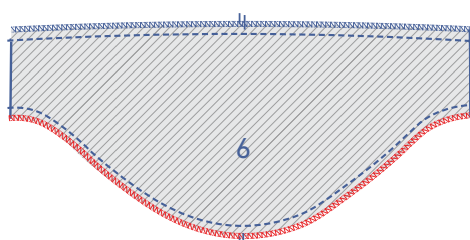
15

Finish the raw edges together with overlock stitching.



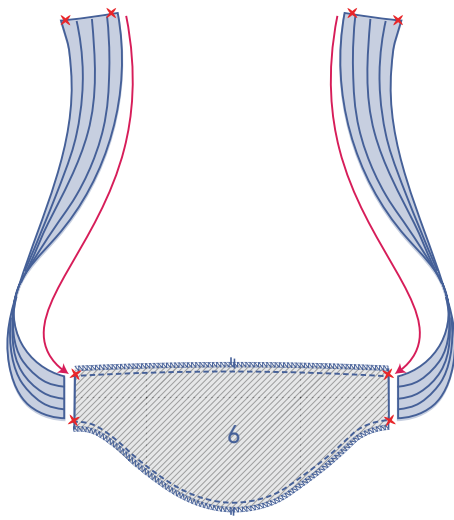
16

Pin and sew the curved edge of the back to the curved edge of the front.



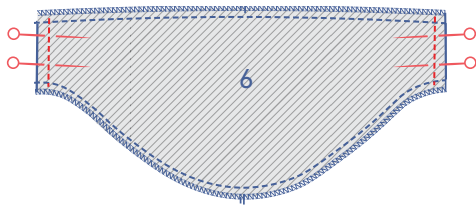
17

Finish the raw edges together with overlock stitching.



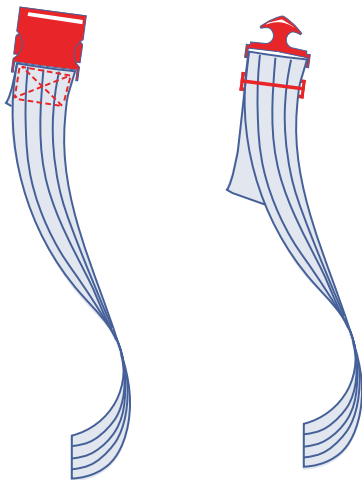
18

Slide the end of the each strap into the openings on the sides of the bag, so that the straps are sitting completely inside the bag. The raw edges of the fabric should be aligned with the ends of the straps.



19

Sew together through all layers of fabric. Turn right side out.



20

Cut the strap ends to the preferred length and fasten the clip buckle with a Box-X stitch to secure.