

Erin by Fibre ⚡ood

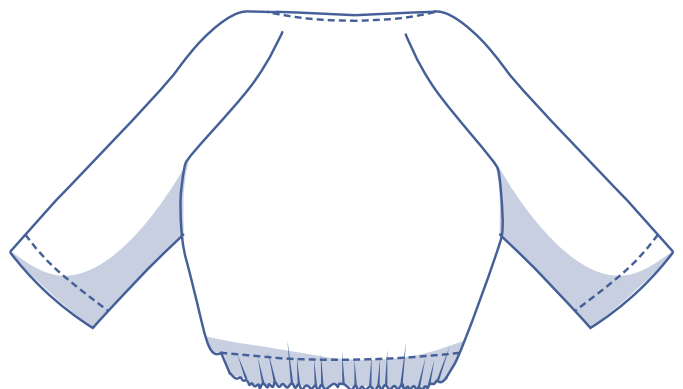
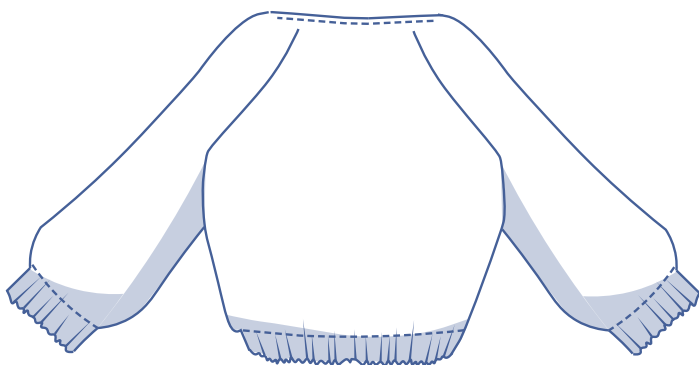
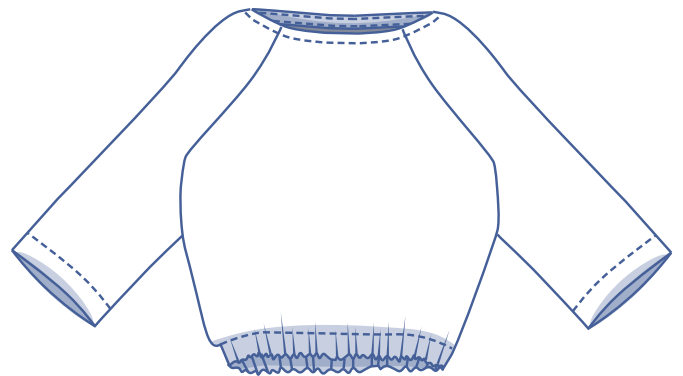
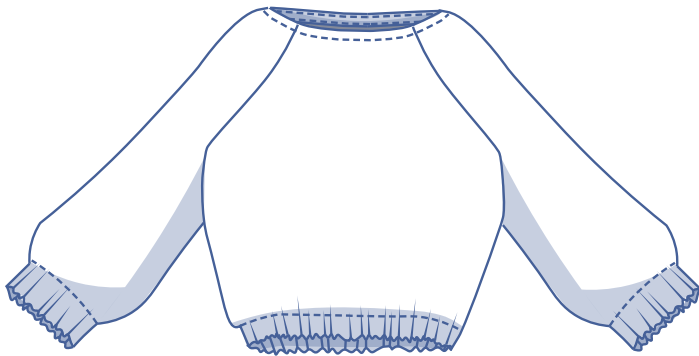


Erin by Fibre ⚡ood



XS - XXXL

You won't be having any more 'what to wear' moments with the Erin sweatshirt in your life! Pair this sweatshirt with your favourite pair of jeans and elegant ankle boots, and you're all set! Erin features straight, three-quarter raglan sleeves. There is also the option to choose the long sleeves and add an elasticated trim for a nice touch.

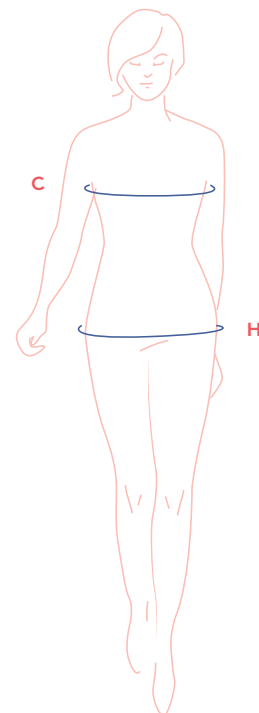


size chart

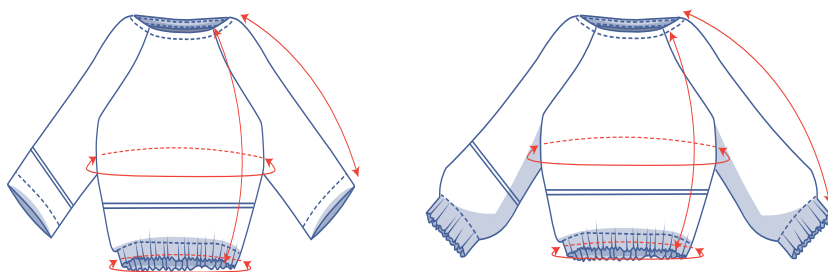
size	XS		S		M		L		XL		XXL		XXXL		
EU	32	34	36	38	40	42	44	46	48	50	52	54	56	58	60
UK	4	6	8	10	12	14	16	18	20	22	24	26	28	30	32
US	0	2	4	6	8	10	12	14	16	18	20	22	24	26	28
B (cm)	76	80	84	88	92	96	100	104	110	116	122	128	134	140	146
B (inches)	29.9	31.5	33.1	34.6	36.2	37.8	39.4	40.9	43.3	45.7	48	50.4	52.8	55.1	57.1
H (cm)	86	90	94	97	100	103	106	109	115	120	125	130	135	140	145
H (inches)	33.9	35.4	37	38.2	39.4	40.6	41.7	42.9	45.3	47.2	49.2	51.2	53.1	55.1	57.1

Chest (C): measure horizontally around the widest part of the chest.

Hip (H): measure horizontally around the widest part of the lower body.



finished garment measurements(in cm)



This chart's measurements serve as a reference. Ease has been added to the width measurements (in addition to the exact body measurements) for a more comfortable fit and to achieve a particular cut, which in this case is loose. Depending on what you prefer, you can go a size smaller or larger than the 'right' size according to your body measurements.

size	XS	S	M	L	XL	XXL	XXXL
length	56.5	58.5	60.75	62.75	66.5	69.5	72.5
sleeve length* (3/4 sleeve)	53	54	55.5	57	60.25	62.75	65.5
sleeve length (long sleeve)**	68	69	70.5	72	75.25	77.75	80.5
chest	90	98	106	114	124	136	148
hem circumference***	69.5	76.5	83.5	90.25	97.75	108.25	118.5

*Including the shoulder length.

**This is the length of the long sleeves and this is the length of the 3/4-length sleeves + 15 cm.

***With elastic

Compare the stated lengths to the measured or desired lengths. **Lengthen** or **shorten** the sweatshirt and/or sleeves by cutting the pattern pieces at the indicated double lines and then spreading the pattern pieces out X cm from each other or overlapping them where necessary. Make sure that the CF and CB lines and the side seams are always straight.



IMPORTANT

Adapt the amount of fabric based on these alterations.

fabric advice



Make the Erin sweatshirt in a sweatshirt or interlock fabric (such as Ponte Roma), neoprene or scuba. All kinds of knit fabrics work well here but a stable knit works best. We made one version in a zebra print jacquard knit. Find out all the facts about the Fibre Mood fabric collection and the accompanying fabric layouts [here](https://www.fibre mood.com/en/fabrics) or on www.fibre mood.com/en/fabrics.

supplies



- Thread
- Elastic bias tape: see table
- Elastic band (5 cm wide): see table
- Fabric: see table

elastic bias tape	XS	S	M	L	XL	XXL	XXXL
length	49	50	51	52.25	53.25	54.5	55.75

elastic (for the version without elasticised wrist trim)	XS	S	M	L	XL	XXL	XXXL
elastic hem	72.5	79.5	86.5	93.25	100.75	111.25	121.5

elastic (for the version with elasticised wrist trim)	XS	S	M	L	XL	XXL	XXXL
elastic hem	72.5	79.5	86.5	93.25	100.75	111.25	121.5
elastic sleeves	2x18	2x19	2x20	2x21	2x22	2x23	2x24
total length	108.5	117.5	126.5	135.25	144.75	157.25	169.5

fabric used (in cm) F collection	XS	S	M	L	XL	XXL	XXXL
zebra print jersey fabric width 145 cm	120	125	150	155	160	170	210

Discover the Fibre Mood fabric collection and the accompanying fabric layouts [here](https://www.fibre mood.com/en/fabrics) or on www.fibre mood.com/en/fabrics.

fabric used (in cm) standard	XS	S	M	L	XL	XXL	XXXL
fabric width 140 cm	120	125	150	155	160	205	215



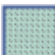
The corresponding fabric layout can be found on the last page of these sewing instructions.

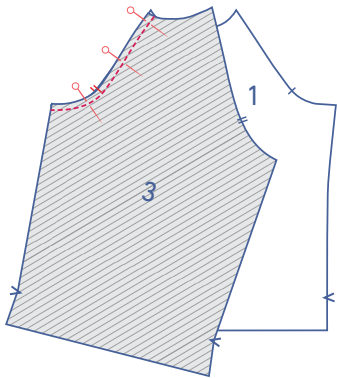
sewing instructions



The method used to hem the garment will depend on your chosen fabric. The pieces are always sewn together with right sides facing, unless stated otherwise.

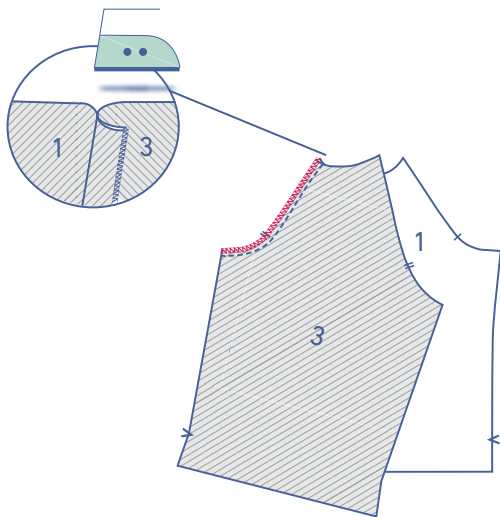


F	front
B	back
	right side
	wrong side
	elastic band

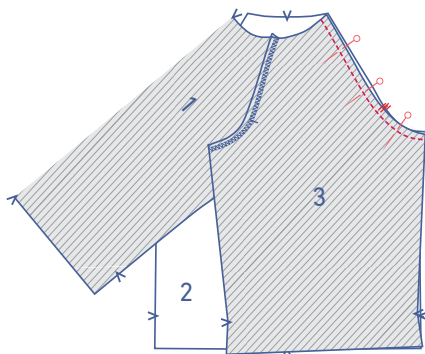


1

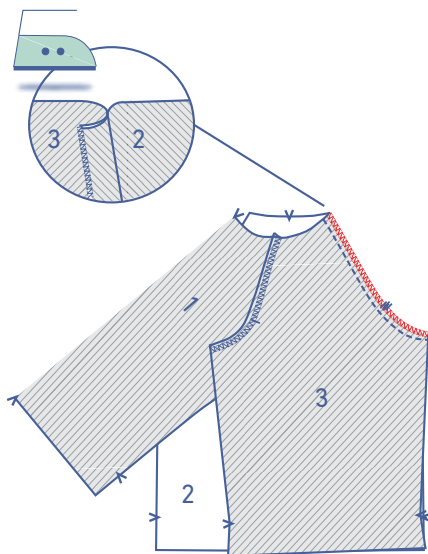
Pin and sew the side with the single sleeve nicks (3) to the front with the corresponding nicks matching.



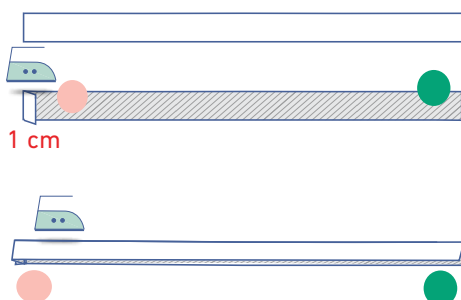
Finish the raw edges with overlock stitching and press the seam allowance towards the sleeve.



Pin and sew the side with the double sleeve nicks (3) to the back (2) with the corresponding nicks matching.

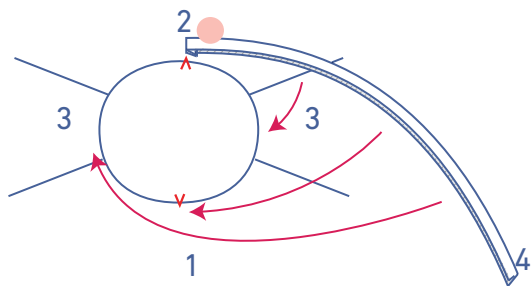


Finish the raw edges with overlock stitching and press the seam allowance towards the sleeve.

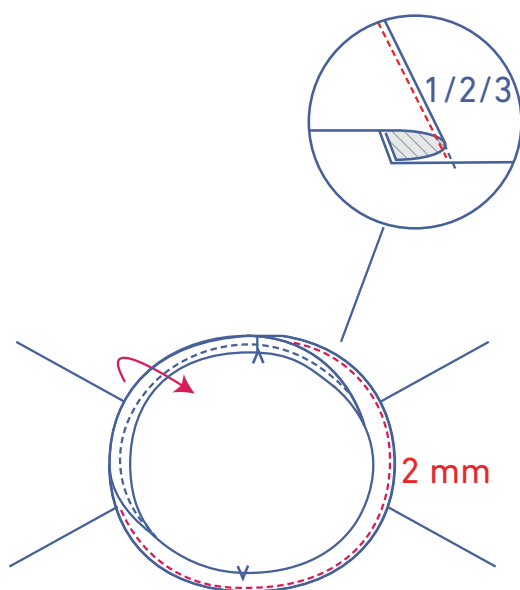
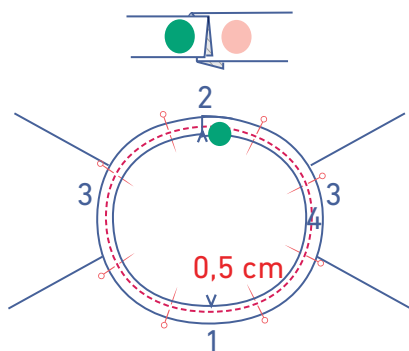


2

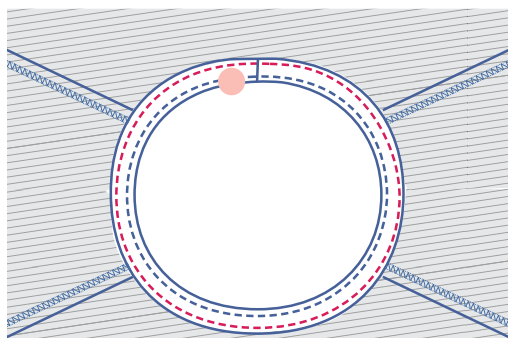
Press 1 short end of the bias tape 1 cm over to the wrong side. Press the bias tape in half lengthwise with the right side of the fabric facing outwards.



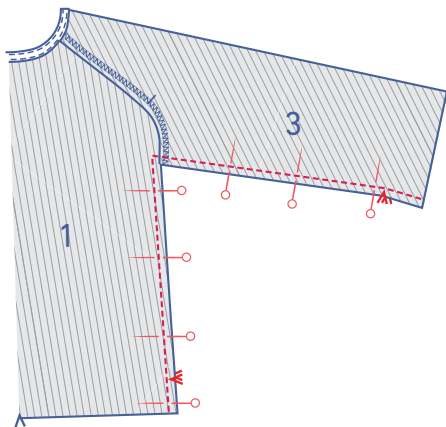
Pin both raw edges of the bias tape to the neckline along the right side with the folded over end matching the CB. The end of the bias tape that hasn't been folded should be on top of the folded end. Sew into place at 0.5 cm.



Fold the bias tape and the seam allowance away from the garment and understitch the bias tape into place at 2 mm from the seam through the bias and underlying seam allowance.

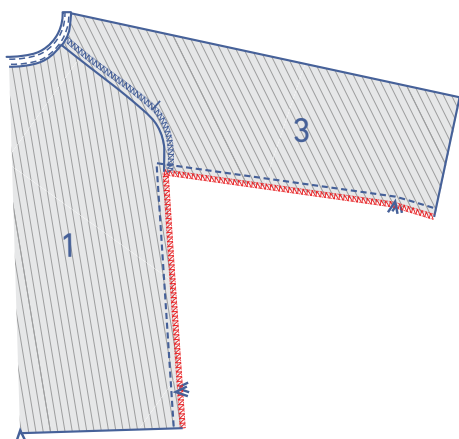


Fold the bias tape all the way over to the wrong side and sew it into place right next to the edge.

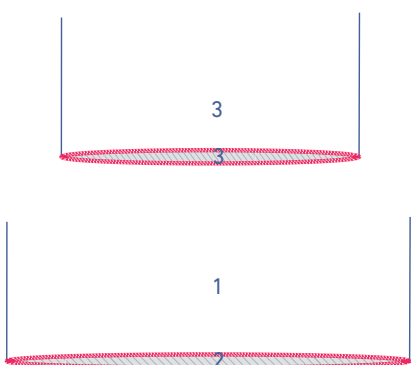


3

Pin and sew the side and underarm seams.

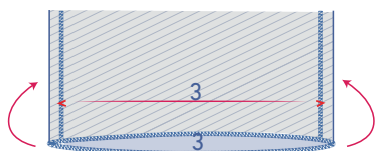


Finish the raw edges together with overlock stitching.

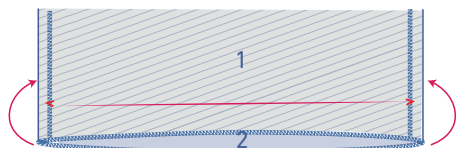


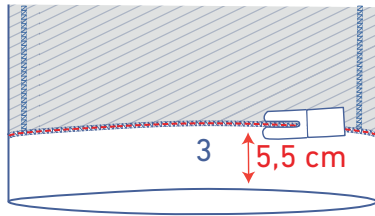
4

Finish the hem and sleeve hem with overlock stitching.

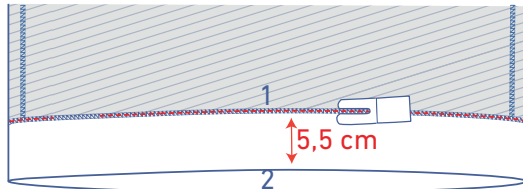


Press the hem and the sleeve hems over to the V notch.

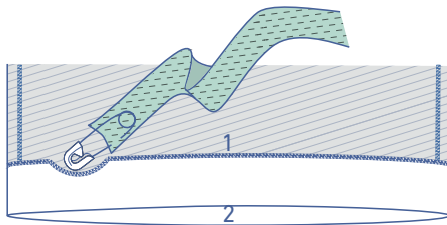




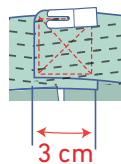
Sew the sleeve hems all the way around at the overlock stitching, at 5.5 cm from the bottom.



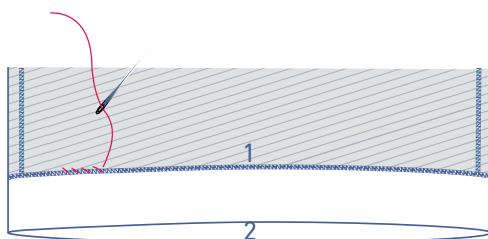
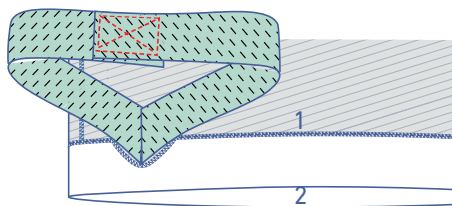
Sew the hem all the way around in the overlock stitching at 5.5 cm from the bottom, but leave an opening so that you can thread the elastic through later.



Thread the elastic through the opening in the casing.



Allow 3 cm of the ends to overlap and sew together using a Box X stitch. Spread the elastic evenly through the casing.

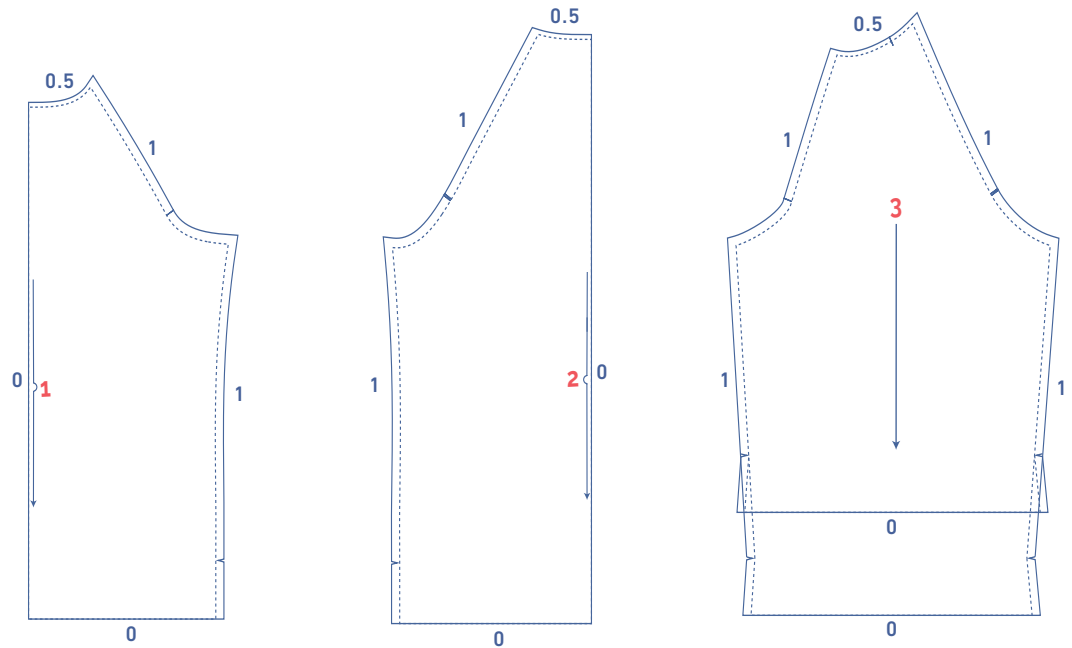


Hand sew or stitch the opening closed.

pattern pieces & seam allowances (in cm)

To prepare the pattern before cutting you must first add the illustrated seam allowances around the paper pattern pieces as shown below.

1. front: 1x on fabric fold
2. back: 1x on fabric fold
3. sleeve: 2x

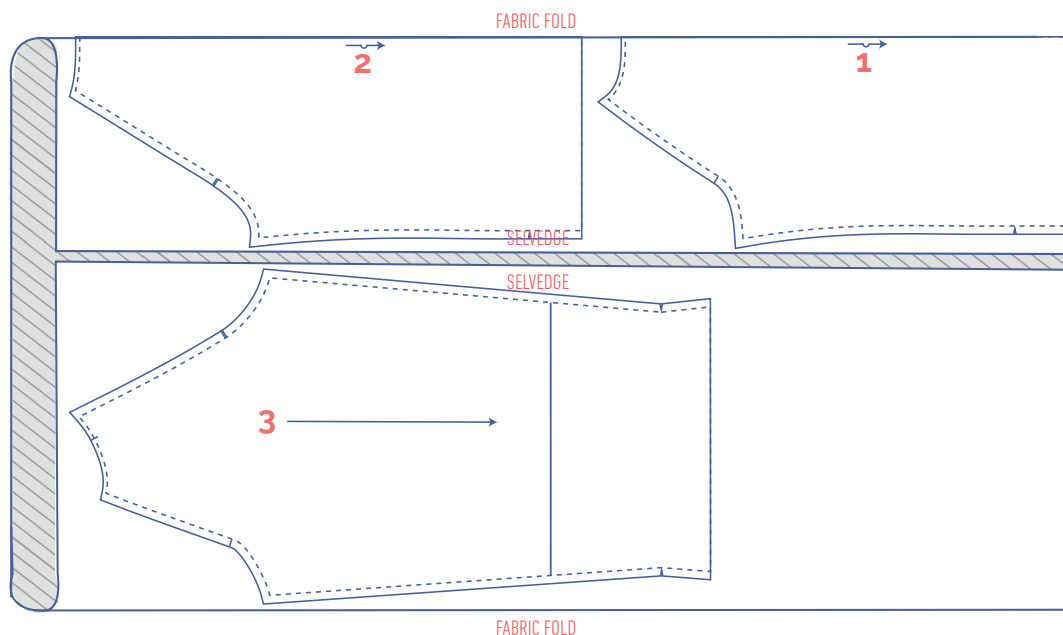


fabric layout for fabrics 140 cm wide

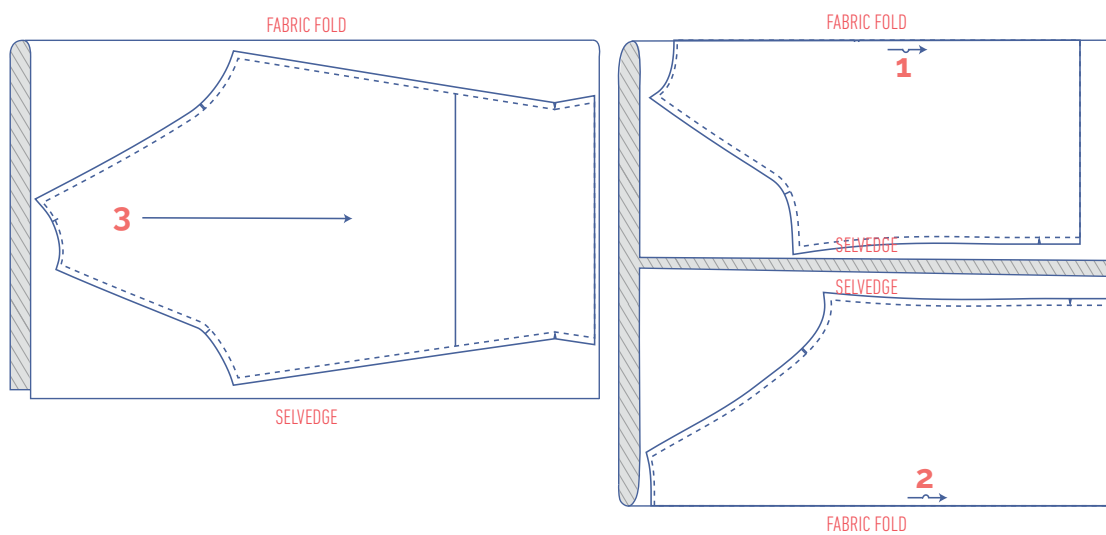
Mark crucial points on the outline of the pattern:

- Nick the pattern paper and fabric at the places where a single vertical line (I) and double vertical lines (II) are indicated.
- Cut a notch out of the fabric at a V notch symbol or on the finished hemline.
- Cut a notch out of the pieces that lie on the fabric fold to mark the middle of these pieces.

XS - S



M -XL



XXL - XXXL

