

Drew by Fibre ⚡ood

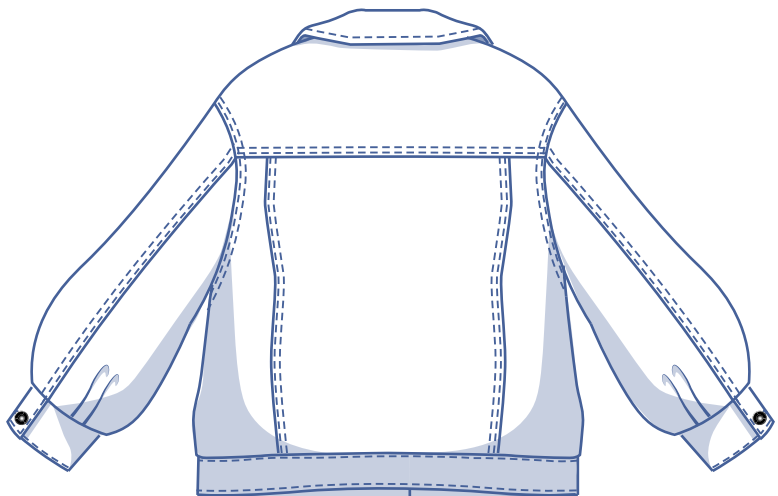
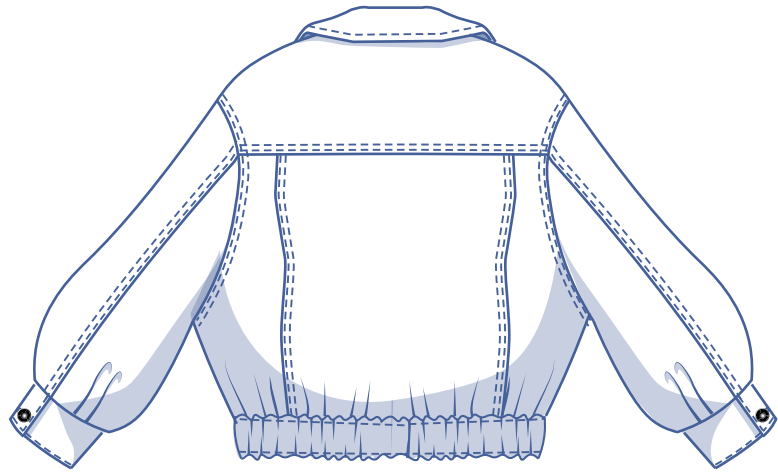


Drew by Fibre ood



XS - XXXL

Drew is an upgrade to the classic denim jacket: oversized jackets are all everywhere this season. This cropped style jacket features statement sleeves with two chest pockets, a traditional collar and decorative stitching. Elasticised waist or not – the choice is yours!

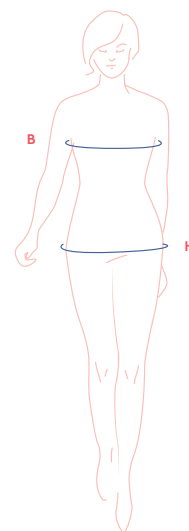


size chart

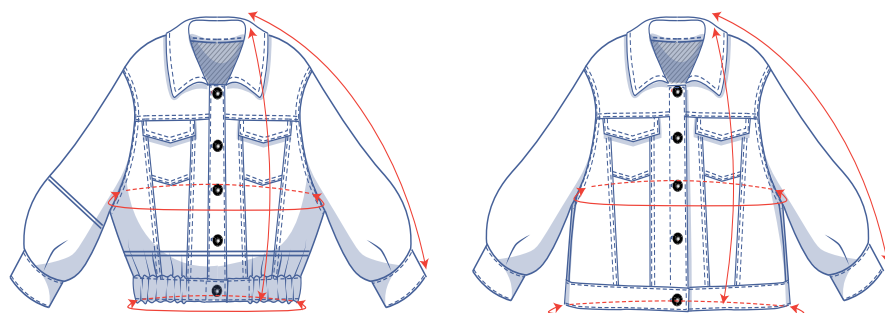
size	XS		S		M		L		XL		XXL		XXXL		
EU	32	34	36	38	40	42	44	46	48	50	52	54	56	58	60
UK	4	6	8	10	12	14	16	18	20	22	24	26	28	30	32
US	0	2	4	6	8	10	12	14	16	18	20	22	24	26	28
B (cm)	76	80	84	88	92	96	100	104	110	116	122	128	134	140	146
B (inches)	29.9	31.5	33.1	34.6	36.2	37.8	39.4	40.9	43.3	45.7	48	50.4	52.8	55.1	133.5
H (cm)	86	90	94	97	100	103	106	109	115	120	125	130	135	140	145
H (inches)	33.9	35.4	37	38.2	39.4	40.6	41.7	42.9	45.3	47.2	49.2	51.2	53.1	55.1	57.1

Bust (B): measure horizontally around the fullest part of the bust.

Hip (H): measure horizontally around the widest part of the lower body.



finished garment measurements(in cm)



This chart's measurements serve as a reference. Ease has been added to the width measurements (in addition to the exact body measurements) for a more comfortable fit and in this case to achieve a boxy oversized cut. . Depending on what you prefer, size up or down from the 'right' size according to your body measurements.

size	XS	S	M	L	XL	XXL	XXXL
length	51.5	52.75	53.75	55	57.5	59	60.75
sleeve length*	69.75	70.75	72	73	74.5	76	77.25
bust	103.25	111.25	119.25	127.25	137.25	149.25	161.25
hem circumference with elastic	53.25	58	62.75	67.5	72.5	79.5	86.5
hem circumference without elastic	94	102	110	118.25	128.25	140.25	152.25

* Including the shoulder length.

Compare the stated lengths to the measured or desired lengths. **Lengthen** or **shorten** the jacket and/or sleeves by cutting the pattern pieces at the indicated double lines and then spreading the pattern pieces out X cm from each other or overlapping them where necessary. Make sure that the CF and CB lines and the side seams are always straight.



IMPORTANT

Adapt the amount of fabric based on these alterations.

fabric advice



The Drew Jacket looks great in fabrics with body like corduroy, denim and cotton or even a wool coating. Find out all the facts about the Fibre Mood fabric collection and the accompanying fabric layouts [here](#) or on www.fibreemotion.com/en/fabrics.

supplies



- Thread
- Jeans buttons (Ø 1, 7 cm): 7 (XS – L), 8 (XL – XXXL)
- Elastic: see table (optional)
- Iron-on interfacing: max. 70 cm
- Fabric: see table

elastic (in cm)	XS	S	M	L	XL	XXL	XXXL
5 cm wide	55	60	65	70	75	82	89

fabric used (in cm) F collection	XS	S	M	L	XL	XXL	XXXL
light blue corduroy fabric width 142 cm	155	155	165	180	185	200	210
peach corduroy fabric width 142 cm	155	155	165	180	185	200	210

Discover the Fibre Mood fabric collection and the accompanying fabric layouts [here](#) or on www.fibreemotion.com/en/fabrics.

fabric used (in cm) standard	XS	S	M	L	XL	XXL	XXXL
fabric width 140 cm	155	155	165	180	185	200	210

The corresponding fabric layout can be found on the last page of these sewing instructions.

sewing instructions



The method used to finish sewing the garment depends on the fabric used. The pieces are always sewn together with the right sides of the fabric facing together, unless stated otherwise.

F front

B back

CF centre front



right side



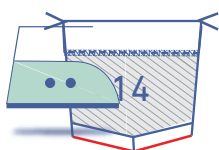
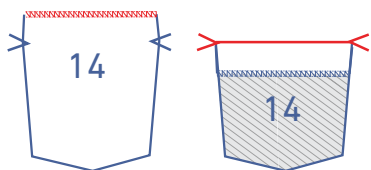
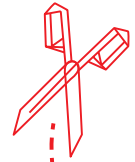
wrong side



iron-on interfacing



elastic band

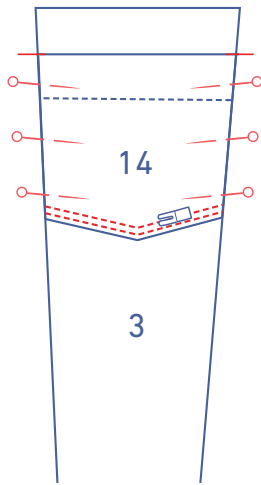


1 cm

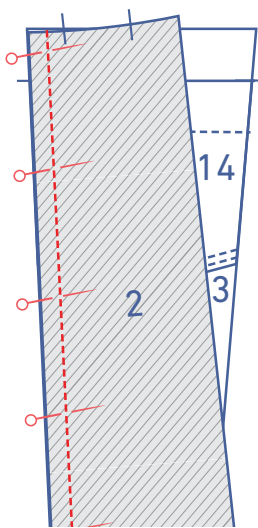
1

Finish the top of the pocket (14) with an overlock stitch. Press the seam allowance over to the V notches. Sew into place along the overlock stitching.

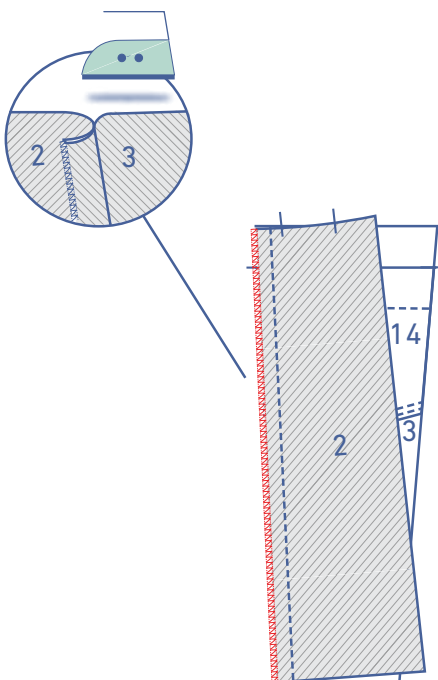
Press the seam allowance of the two slanted lower edges towards the wrong side.



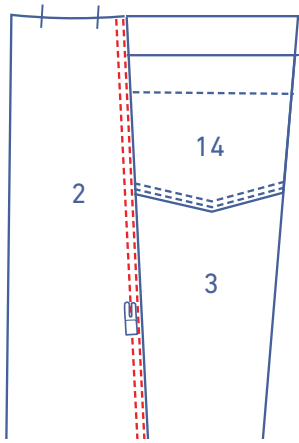
Pin the pocket to the centre front B (3) with the top of the pocket and the nicks matching. Sew the pocket into place right next to the edge with two rows of top-stitching, presser foot apart.



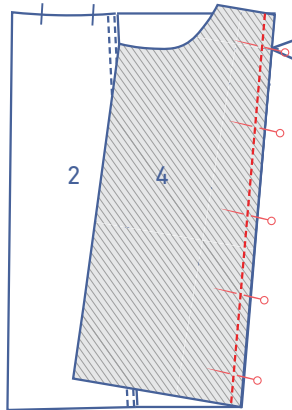
Pin and sew the centre front A (2) to the centre front B.



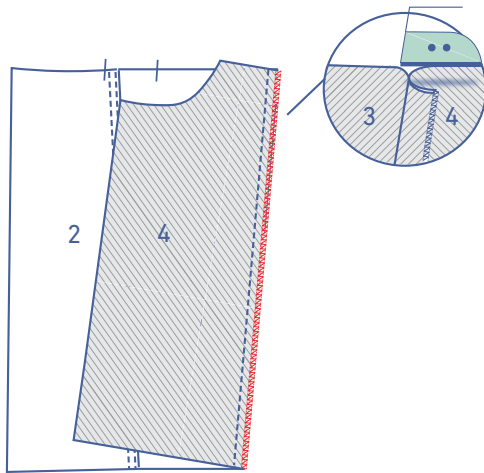
Finish the raw edges together with overlock stitching. Press the seam allowance towards the centre front A.



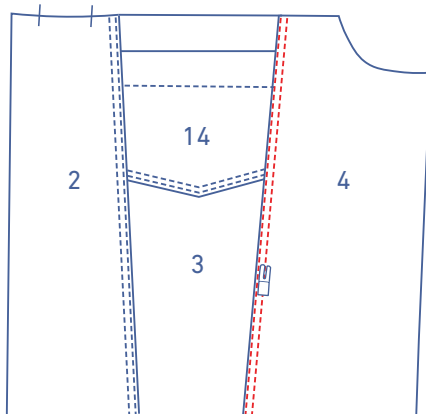
Sew two rows of top-stitching close to the seam.



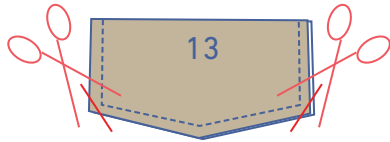
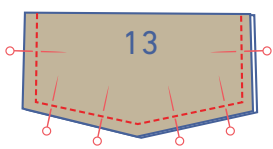
Pin and sew the front side (4) to the centre front B.



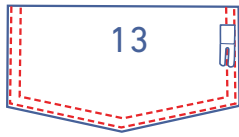
Finish the raw edges together with overlock stitching. Press the seam allowance towards the front side.



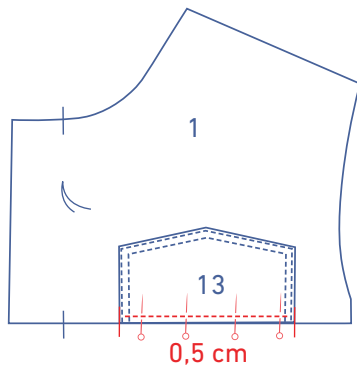
Sew two rows of top-stitching close to the seam.



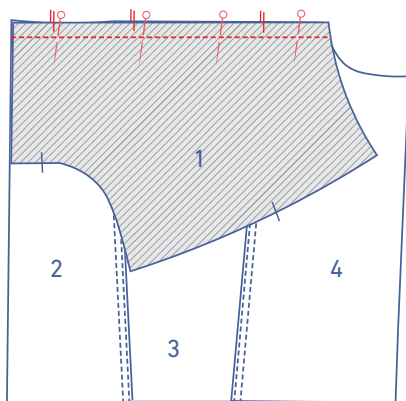
With right sides facing, pin and sew around the edges of both flaps (13) together, leaving the top open. Trim the corners.



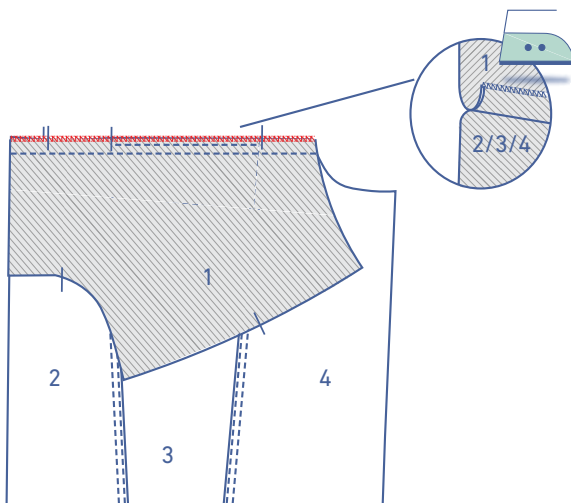
Turn the right way out. Sew a coverstitch right next to the edge.



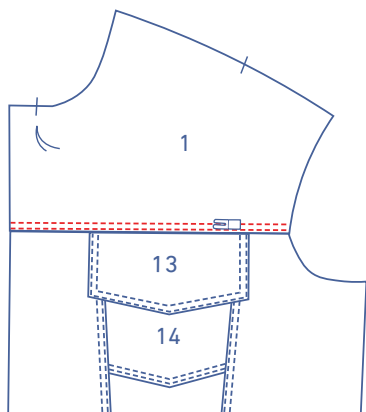
Pin the raw edges of the flap to the top front piece (1) between the nicks and sew into place at 0.5 cm from the raw edge.



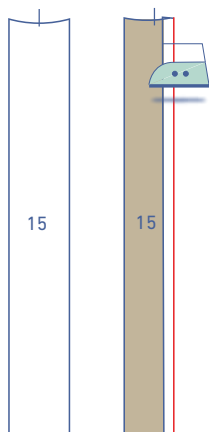
Pin and sew the top front piece to the front with the corresponding nicks matching.



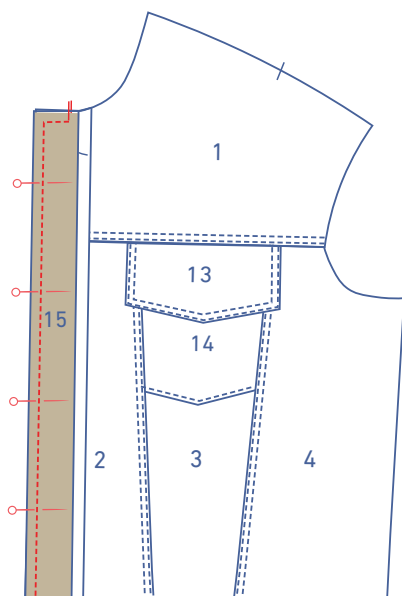
Finish the raw edges together with overlock stitching and press the seam allowance towards the top front piece.



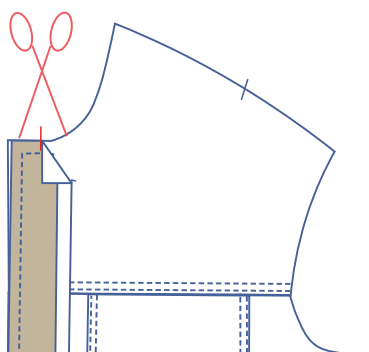
Sew two rows of top-stitching close to the seam.



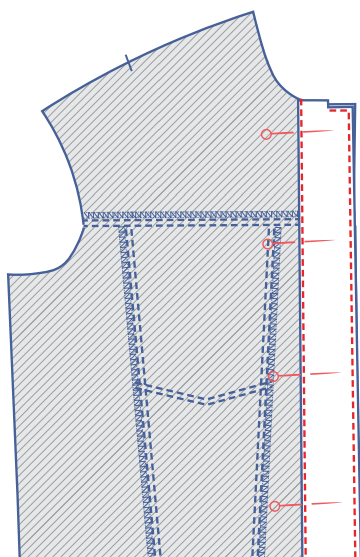
Press 1 long side of the facing front (15) towards the wrong side.



Pin and sew the facing front with the raw edge matching the raw edge of the front. Sew into place. At the top, sew a right angle up to the nick indicating the CF.



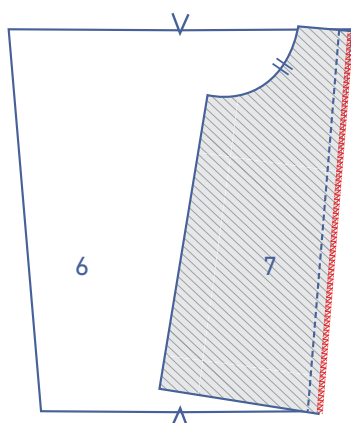
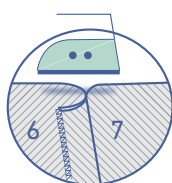
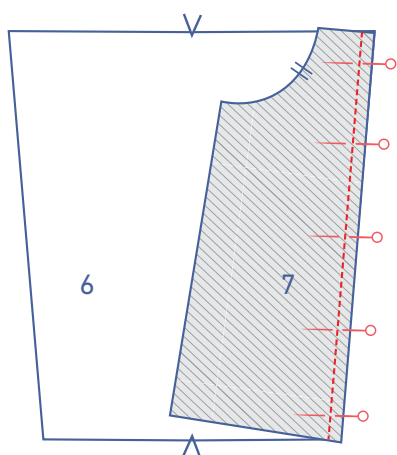
(Only) snip into the seam allowance of the front on the nick indicating the CF stopping right before the stitching. Trim the corner and turn out the right way.



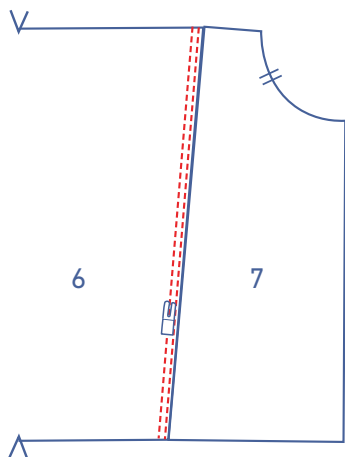
Sew the facing in place close to the folded edge and topstitch close to the CF edge.

2

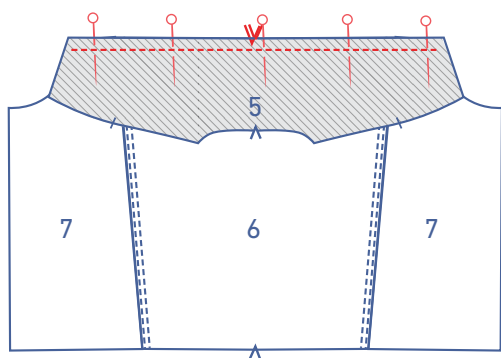
Pin and sew the back side (7) to the centre back (6).



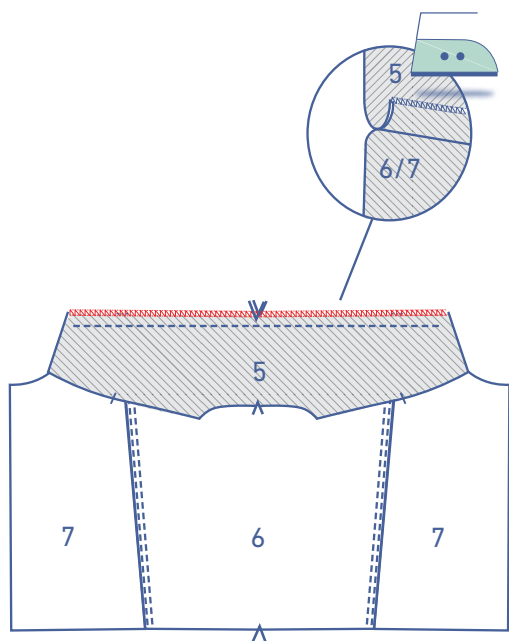
Finish the raw edges together with overlock stitching and press the seam allowance towards the CB.



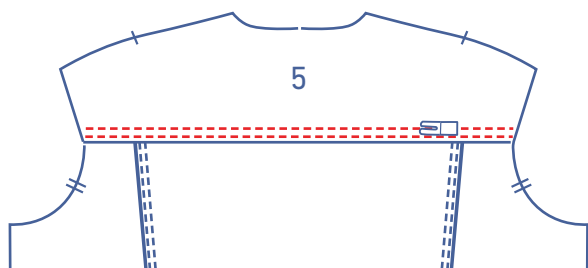
Sew a two rows of top-stitching close to the seam.



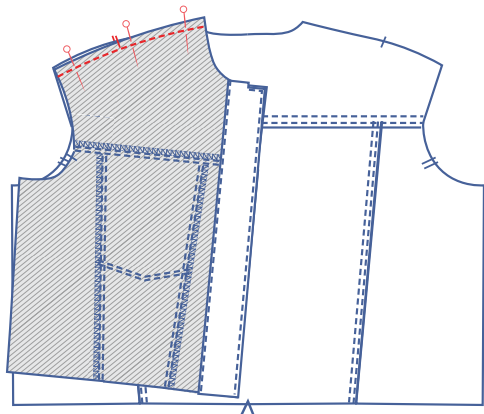
Pin and sew the top back piece (5) to the back.



Finish the raw edges together with overlock stitching and press the seam allowance towards the top back.

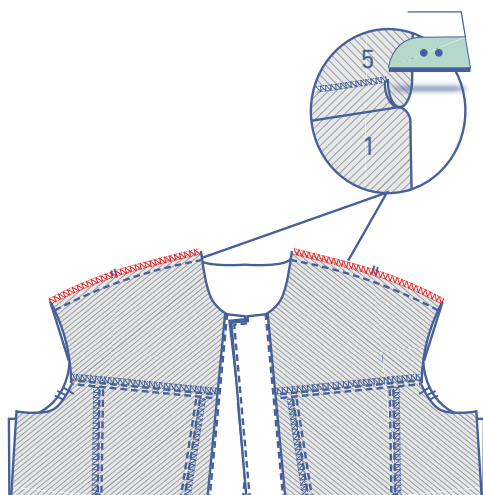


Sew two rows of top-stitching close to the edge.

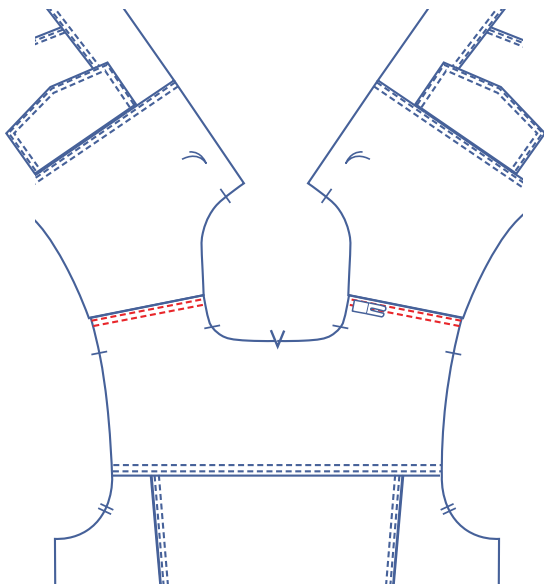


3

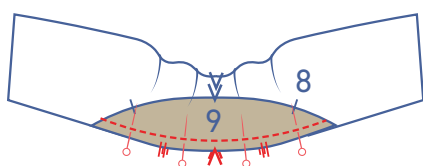
Pin and sew the shoulder seams with the corresponding nicks matching.



Finish the raw edges together with overlock stitching and press the seam allowance towards the back.

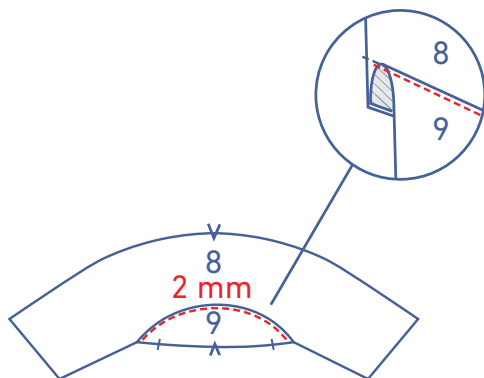


Sew a coverstitch right next to the edge.

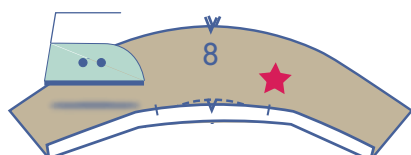


4

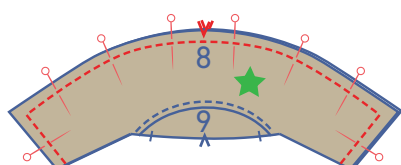
Pin and sew 1 collar (8) to 1 collar stand (9) with the corresponding nicks matching. Repeat for second collar and collar stand.



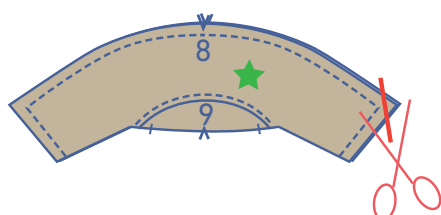
Press the seam allowance towards the collar stand. At 2 mm from the seam, understitch the collar stand through the stand and underlying seam allowance.



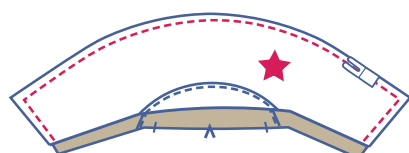
At the bottom of one of the collar sets, press 1 cm of seam allowance towards the wrong side.



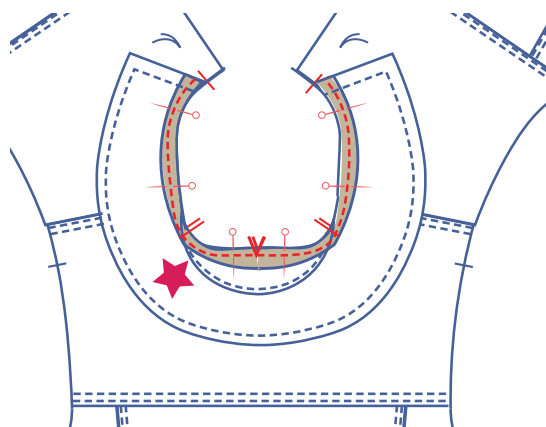
Place the second collar set on top with right sides together and pin and sew the edges of the collars to each other, leaving the lower edge free.



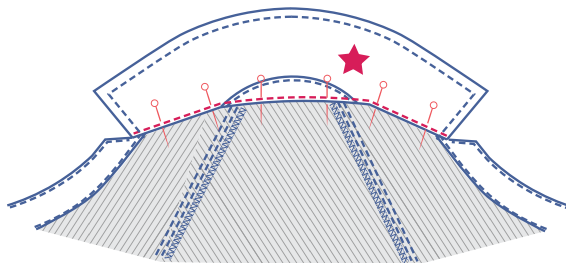
Trim the seam allowance in the corners. Turn the right way out.



Top stitch all way the around at presser foot width from the edge.



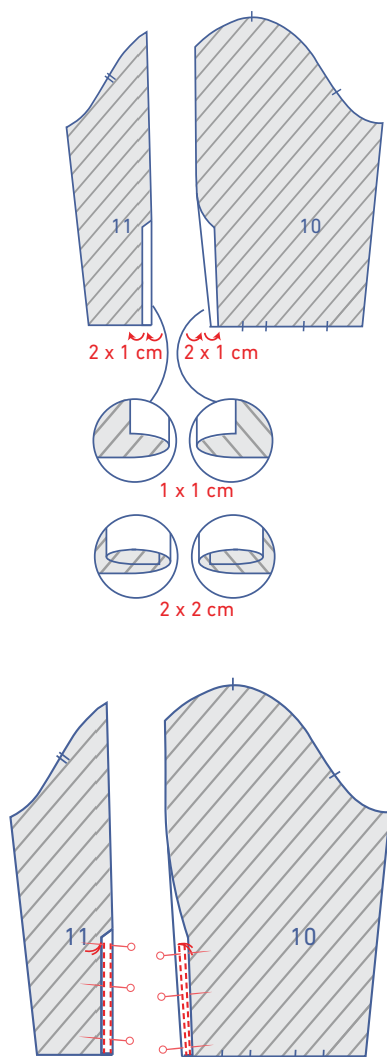
Pin and sew the unpressed edge of the collar to the neckline along the right side of the garment with the corresponding nicks matching. The finished side of the collar stand should match the CF nick, with the nick on the collar stand matching the nick on the back that indicates the actual shoulder and both V notches indicating the CB.



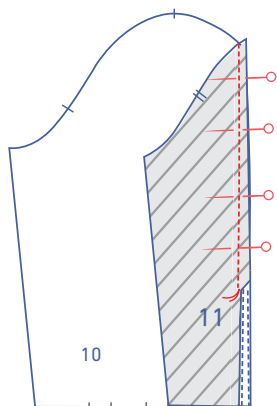
Flip the collar over so that the wrong side of the garment is facing you and place and place the fold line (of the pressed over seam allowance) directly over the previous stitching. Sew into place right next to the edge.

5

To create the two-piece sleeves: fold the the piece of shaped facing towards the wrong side at the slit of the sleeve top (10) and the sleeve bottom (11) by 1 cm and over once again.



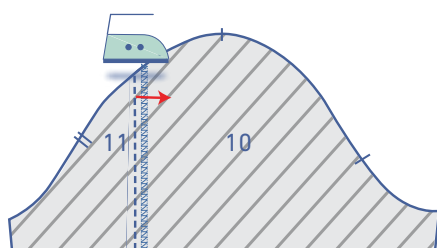
Sew into place up to the basting thread with two rows of top-stitching, presser foot width apart.



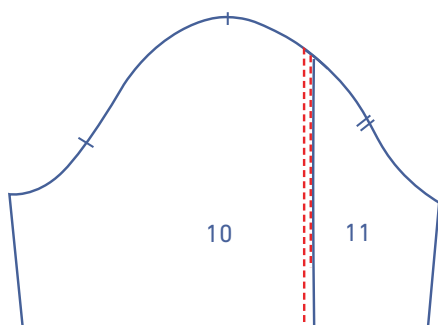
Pin and sew the two sleeve pieces together together up to the basting thread.



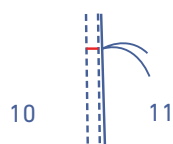
Finish the raw edges together with overlock stitching.



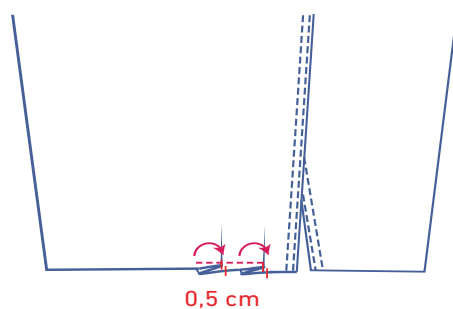
Press the seam allowance towards the sleeve top.



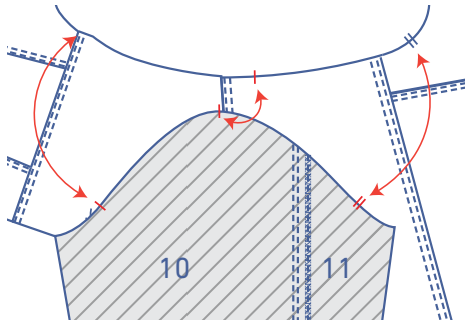
From the right side, sew two rows of top-stitching next to the seam and up to the slit.



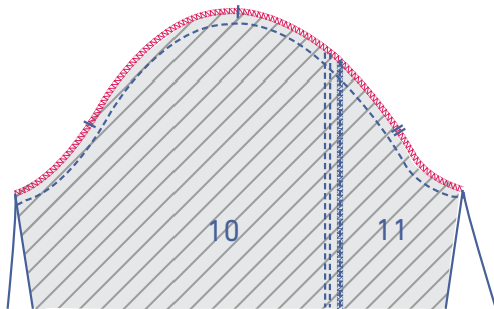
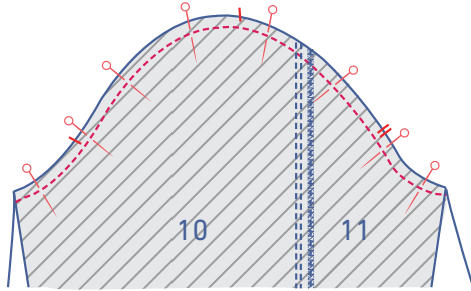
Sew a horizontal reinforcement stitch at the top of the slit between the two rows of top stitching.



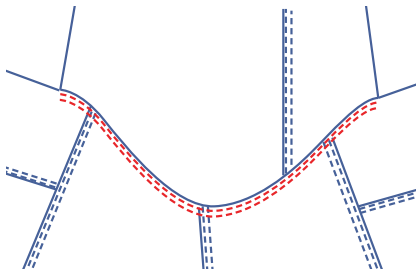
Create the pleats by overlapping the nicks in the direction indicated. Sew into place at 0.5 cm from the raw edge.



Pin and sew the sleeve cap to the armhole, making sure that the corresponding nicks match perfectly. The sleeve's single nick should match the nick on the front, with the sleeve's double nicks matching the double nicks on the back. The top single nick matches the the single nick that marks the true shoulder. Distribute the fabric between the markings and sew together.



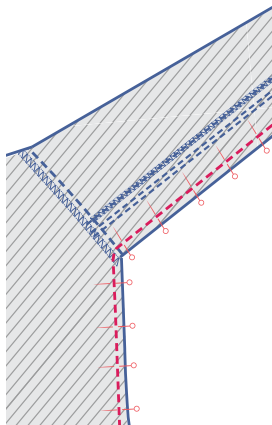
Finish the raw edges together with overlock stitching.

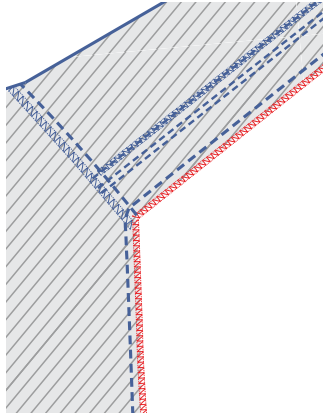


Press seam allowance towards the garment. Now, sew two rows of top-stitching along the edge of the garment, close to the seam.

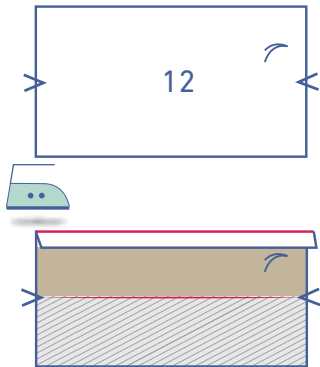
6

Next, pin and sew the underarm and side seams.





Finish the raw edges together with overlock stitching.

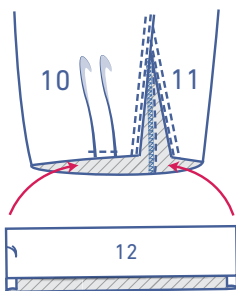


7

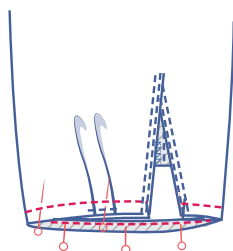
Press 1 cm of seam allowance along the long side of the wrist cuff (12) (the side with the basting) towards the wrong side.



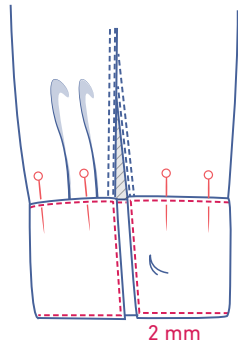
Fold the wrist trim in half at the V notches with the right side of the fabric facing inwards. Sew the short sides. Trim the seam allowance and turn the right way out.



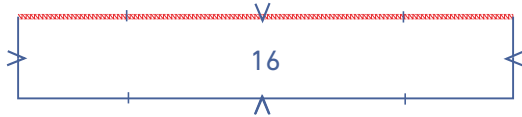
Slide the wrist trim into the sleeve.



Pin and sew the pressed raw edge of the wrist trim to the bottom of the sleeve along the wrong side of the sleeve.

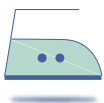


Fold the wrist trim towards the right side of the sleeve and place the fold line (of the pressed over seam allowance) directly over the previous stitching. Sew into place next to the edge. Finish the top stitching, sewing all the way around at 2 mm from the edge.

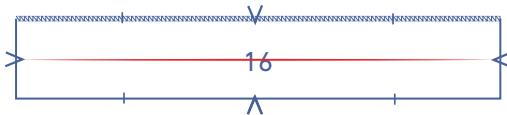


8

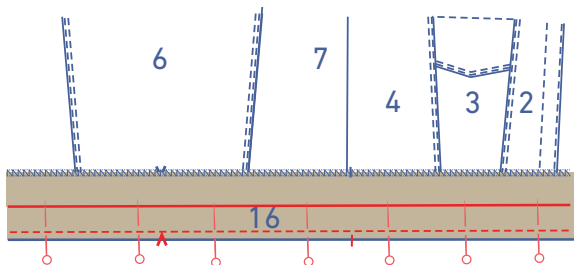
Finish the indicated side of the trim (16) with overlock stitching.



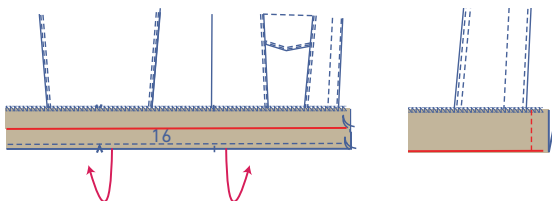
Fold the trim in half lengthwise with the right side of the fabric facing outwards to create a fold line.



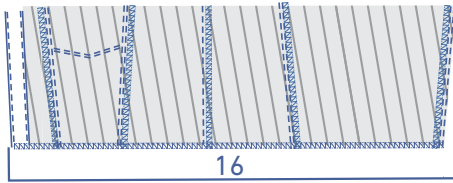
Open out again.



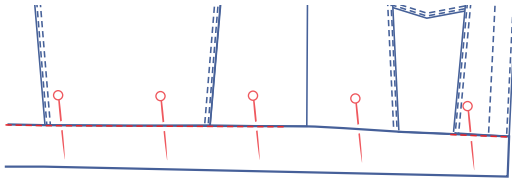
Pin and sew the non-overlocked side of the waistband to the bottom of the garment with the corresponding nicks and seams matching. The trim should extend 1 cm past each side of the finished piece.



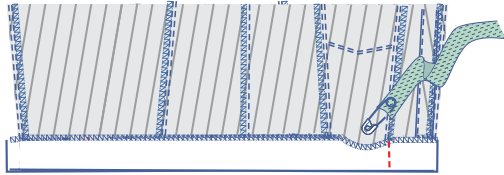
Fold the trim in half lengthwise at the pressed fold line with the right side of the fabric facing inwards. Sew the short sides.



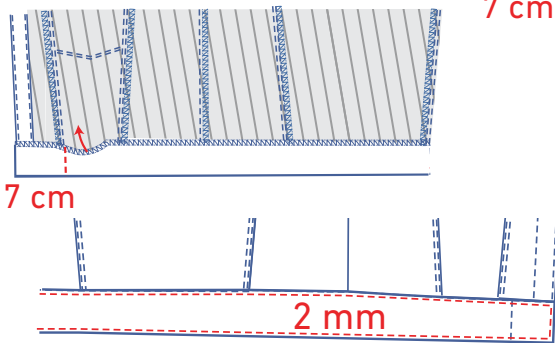
Turn out the right way.



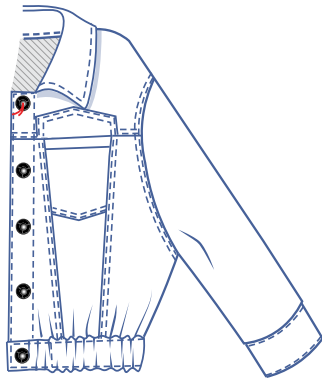
Neatly pin the waistband in place from the right side of the garment. Stitch in the ditch along the seam line. Leave a 4 cm opening in the seam so that the elastic band can be threaded through later.



Thread the elastic through the openings. Pin the short side of the elastic in place at 7 cm from the CF on both the left and the right sides.

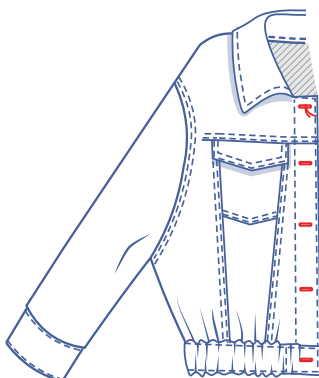


Top stitch all the way around at 2 mm from the edge.



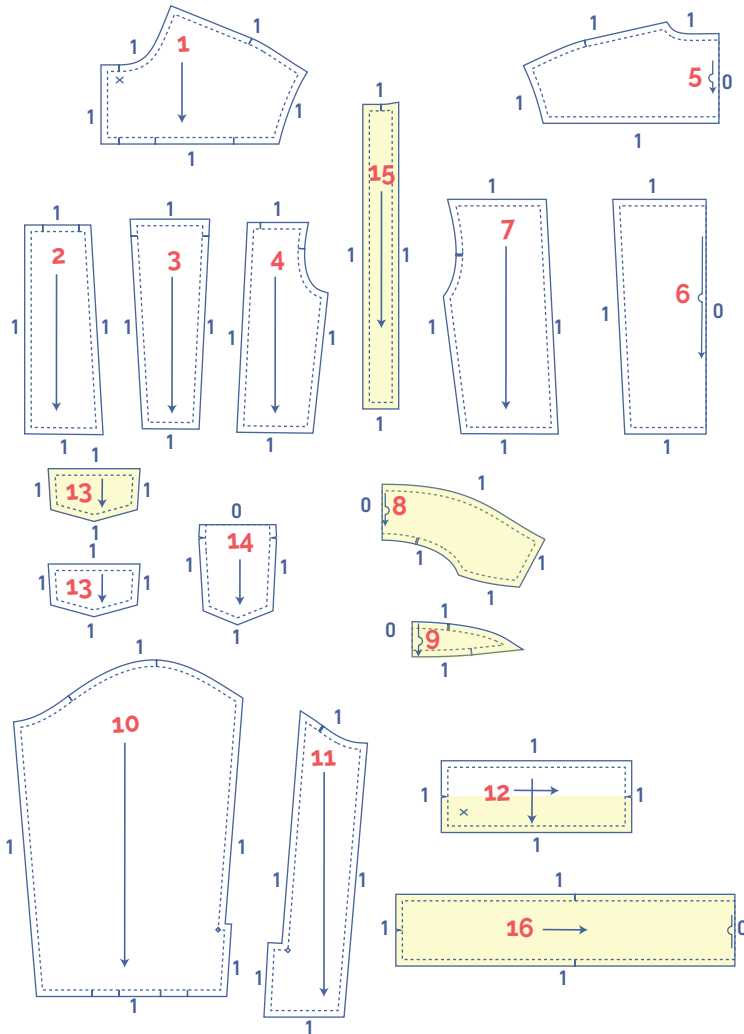
9

Attach the (jeans) buttons at the indicated places. The location of the top button is indicated on the pattern. The cuff button should be halfway up the cuff. Divide the distance between these buttons equally to place the other buttons. Make horizontal buttonholes at the corresponding places.



pattern pieces & seam allowances (in cm)

To sew the garment as described in the instructions, you need to draw the illustrated seam allowances around the paper pattern pieces before cutting them out.



1. Top front piece: 2x
2. centre front A: 2x
3. centre front B: 2x
4. front piece side: 2x
5. top back piece: 1x on fabric fold
6. back piece centre: 1x on fabric fold
7. right piece side: 2x
8. collar: 2x on fabric fold
9. collar stand: 2x on fabric fold
10. sleeve top: 2x
11. sleeve bottom: 2x
12. wrist cuff: 2x
13. flap: 4x
14. pocket: 2x
15. facing front: 2x
16. hem: 1x on fabric fold

IMPORTANT

The pieces highlighted in light yellow have iron-on interfacing attached to the wrong side.

fabric layout for fabrics 140 cm wide

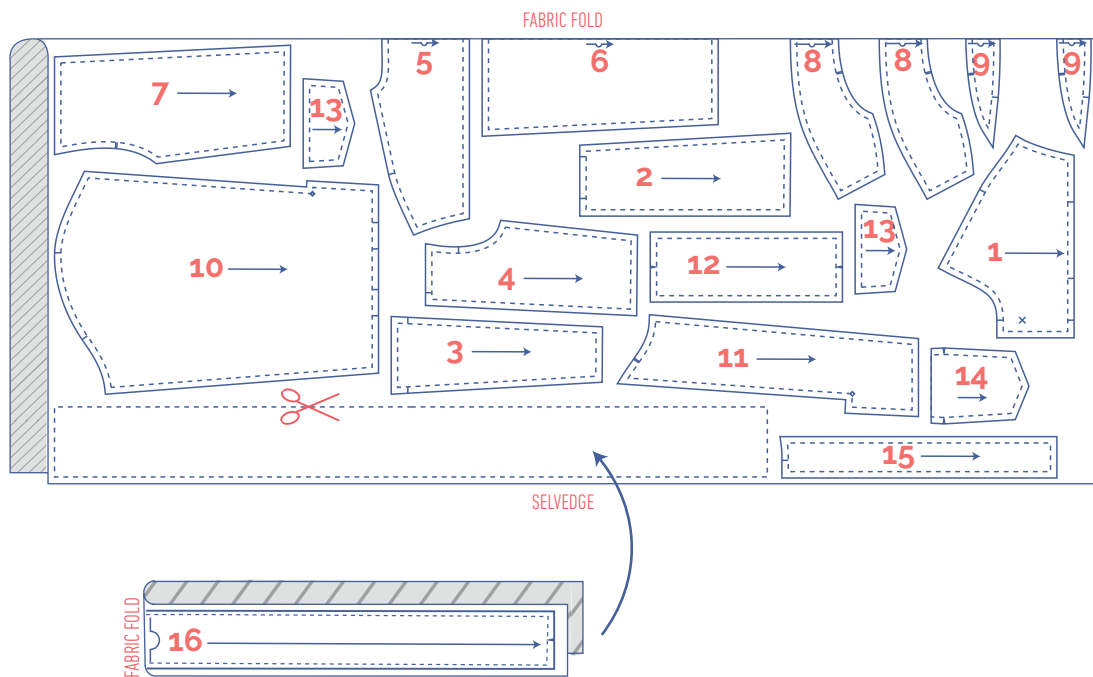
Before we begin sewing, make sure to transfer all markings onto your fabric:

- Nick the pattern paper and fabric at the places where a single vertical line (I) and double vertical lines (II) are indicated.
- Cut a notch out of the fabric at a V notch symbol or on the finished hemline.
- Cut a notch out of the pieces that lie on the fabric fold to mark the middle of these pieces.

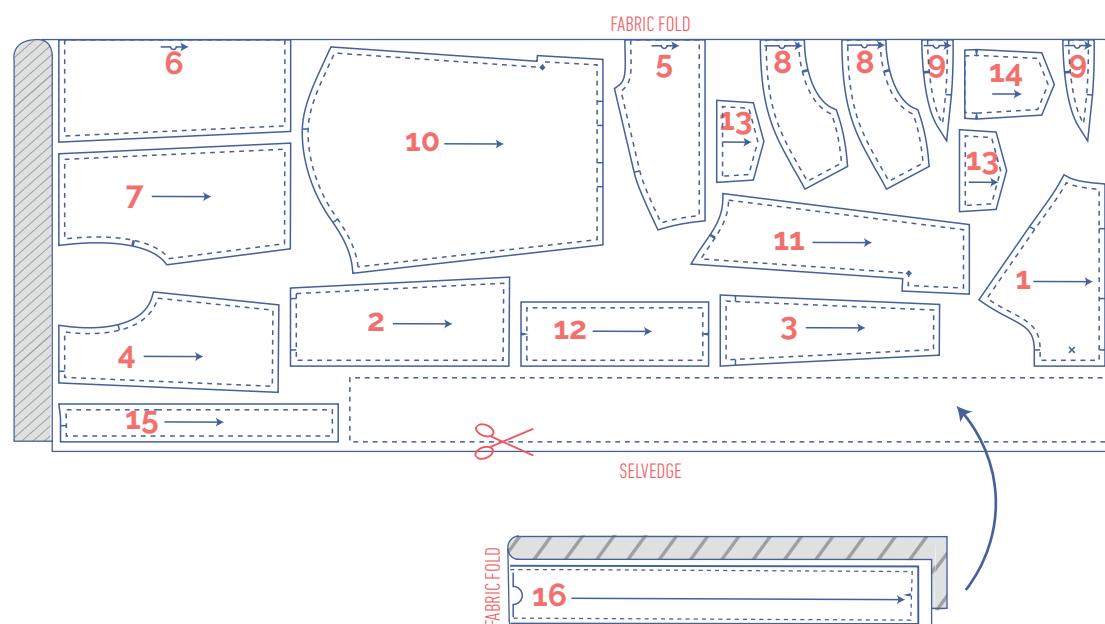
Indicate crucial points on the pattern:

- Mark the position of the button by hand with basting thread (↵) by basting through the middle of the (X).
- Mark the tip of the sleeve split by hand with basting thread (↵) by basting through the middle of the (◇).

XS - M



L - XL



XXL - XXXL

