

Vienna by Fibre ood

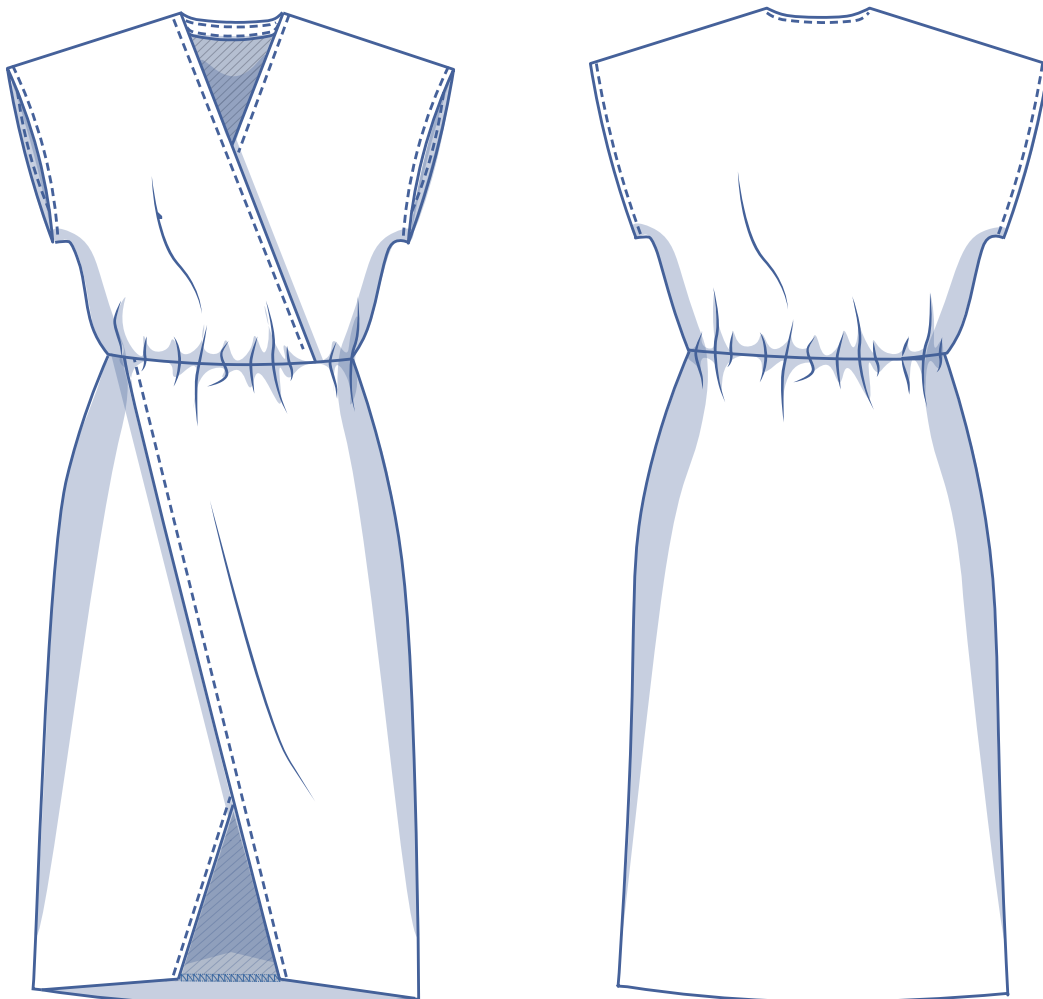


Vienna by Fibre Mood



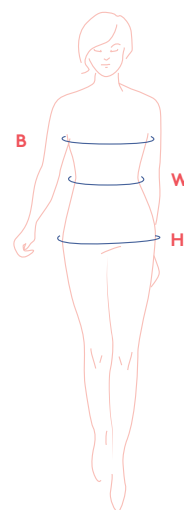
32 -58

Wrap dresses are an absolute must for this season! That means wearing the Vienna guarantees that you'll be well on top of this elegant trend. Even better, you don't have to wrap it every time you put it on, because the wrap has been stitched into place at the waist. It doesn't get more convenient than that. Vienna is a short sleeve, striped long dress.



size chart

size (EU)	32	34	36	38	40	42	44	46	48	50	52	54	56	58
UK	4	6	8	10	12	14	16	18	20	22	24	26	28	30
US	0	2	4	6	8	10	12	14	16	18	20	22	24	26
C (cm)	76	80	84	88	92	96	100	104	110	116	122	128	134	140
W (cm)	66	68	70	74	78	82	84	88	94.5	101	107.5	114	120.5	127
H (cm)	86	90	94	97	100	103	106	109	115	120	125	130	135	140

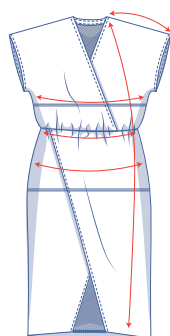


Bust (B): measure horizontally around the fullest part of the bust.

Waist (W): measure horizontally at the narrowest point of the body.

Hip (H): measure horizontally around the widest part of the lower body.

finished garment measurements (in cm)



size	32	34	36	38	40	42	44	46	48	50	52	54	56	58
length	132.5	133	133.25	133.75	134.25	134.5	135	135.25	136.75	137.25	137.5	138	138.25	138.75
sleeve length*	22	22.75	23.5	24.25	25	25.75	26.5	27.25	28.5	29.75	31	32.25	33.5	34.75
1/2 bust measurement	51.5	53.5	55.5	57.5	59.5	61.5	63.5	65.5	68.5	71.5	74.5	77.5	80.5	83.75
1/2 hip measurement	48.5	50.5	52.5	54	55.5	57	58.5	60	62.75	65.5	68.5	71.25	74	76.75
1/2 waistline measurement**	46.5	48.5	50.5	52.25	54	55.75	57.5	59.25	62	64.75	67.5	70.5	73.25	76

*. Including the shoulder length.

** Without elastic band.

Compare the stated lengths to the measured or desired lengths. **Lengthen** or **shorten** the dress and/or sleeves by cutting the pattern pieces at the indicated double lines and then spreading the pattern pieces out X cm from each other or overlapping them where needed. Make sure that the CF and CB lines and the side seams are always straight.



IMPORTANT

Adjust the fabric to be used based on these alterations.

supplies



- Thread
- Elastic band: see table
- Snap (Ø 0.5 cm): 1
- Fabric: see table

elastic band	32	34	36	38	40	42	44	46	48	50	52	54	56	58
0.5 cm wide	64.5	66.5	68.5	72.5	76.5	80.5	82.5	86.5	93	99.5	106	112.5	119	125.5

fabric used (in cm) F collection	32	34	36	38	40	42	44	46	48	50	52	54	56	58
white fabric with stripes fabric width 150 cm	180	180	185	210	215	225	230	235	245	255	265	275	290	300

Find out everything you need to know about the Fibre Mood fabric collection and the accompanying fabric plans [here](https://www.fibre mood.com/en/fabrics) or on www.fibre mood.com/en/fabrics.

fabric used (in cm) standard	32	34	36	38	40	42	44	46	48	50	52	54	56	58
fabric width 140 cm	255	255	270	290	290	290	295	295	300	305	325	330	345	355

The corresponding fabric plan can be found on the last page of these sewing instructions.

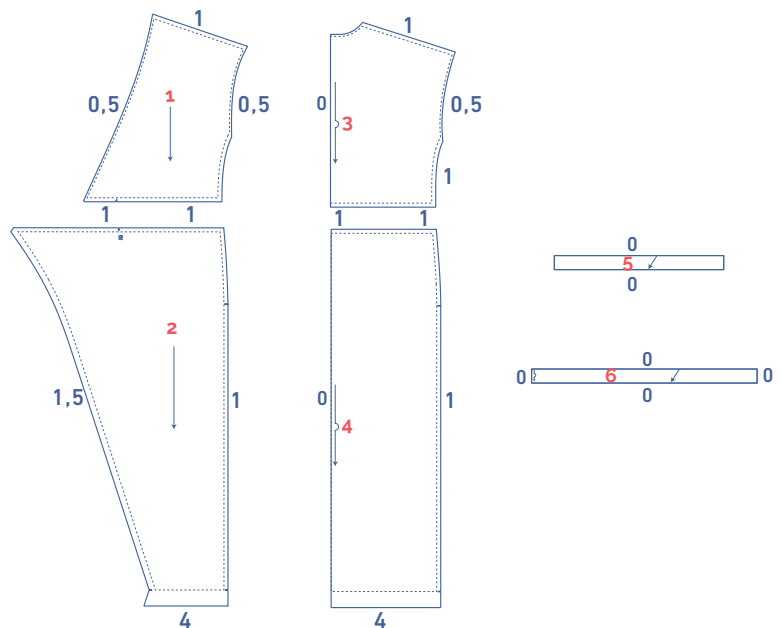
fabric advice



Use a fabric with a fluid drape for this dress and avoid stiff fabrics. Fabrics with a striped pattern make an even more interesting look. Find out all the facts about the Fibre Mood fabric collection [here](https://www.fibre mood.com/en/fabrics) or on www.fibre mood.com/en/fabrics.

pattern pieces & seam allowances (in cm)

To sew the garment as described in the instructions, you must draw the illustrated seam allowances around the paper pattern pieces before cutting them out.



1. top front: 2x
2. skirt front: 2x
3. top back: 1x on fabric fold
4. skirt back: 1x on fabric fold
5. bias tape armhole: 2x on the bias to the grain. You will have to draw this pattern yourself. Draw a rectangle using the measurements in the table (in cm).

size	32	34	36	38	40	42	44	46	48	50	52	54	56	58
width	41.5	42	42.25	42.5	42.75	43.25	43.5	43.75	46	46	46.25	46.5	46.75	47
height	3.5	3.5	3.5	3.5	3.5	3.5	3.5	3.5	3.5	3.5	3.5	3.5	3.5	3.5

6. bias tape neck: 1x on fabric fold (on the bias to the grain). You will need to draw this yourself. Draw a rectangle using the measurements in the table (in cm).

size	32	34	36	38	40	42	44	46	48	50	52	54	56	58
width	54.75	55.5	56.25	57	57.75	58.5	59.25	60	61.25	62.75	64	65.5	67	68.25
height	3.5	3.5	3.5	3.5	3.5	3.5	3.5	3.5	3.5	3.5	3.5	3.5	3.5	3.5

Indicate crucial points on the outline of the pattern:

- Nick the pattern paper and fabric at the places with a single vertical line (I).
- Cut a small corner out of the fabric at a V notch or at the finished hemline.
- Cut a small corner (V notch) out of the pieces that lie on the fabric fold to mark the middle of these pieces.

sewing instructions



The method used to finish sewing the garment depends on the fabric used. The pieces are always sewn together with the right sides of the fabric matching exactly, unless stated otherwise.

F front

B back

CF centre front

CB centre back

RFP right front panel

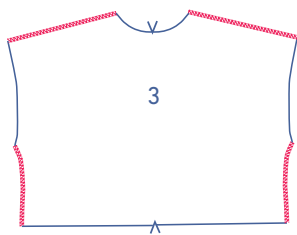
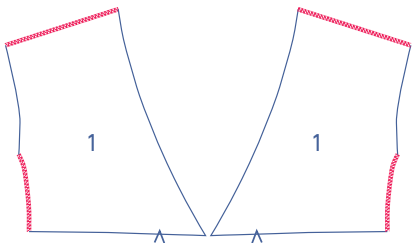
LFP left front panel



right side

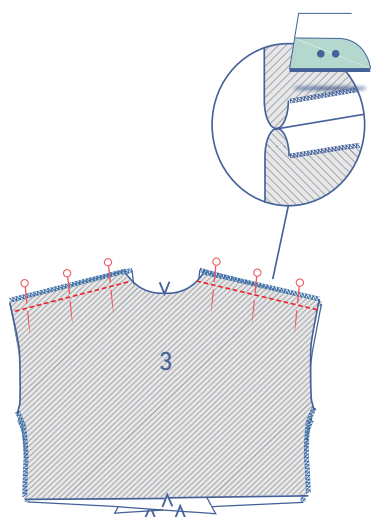


wrong side

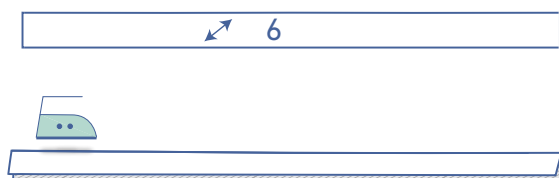


1

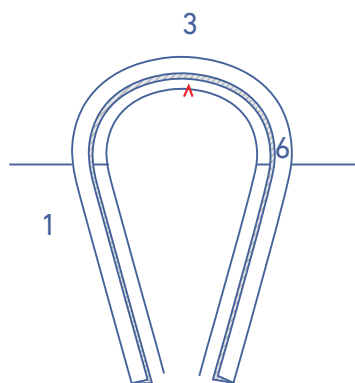
Finish the shoulder and side seams of the front top (1) and back top (3) using an overlock stitch.



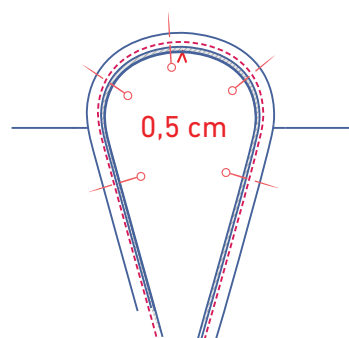
Pin and sew the shoulder seams and press the seam open.

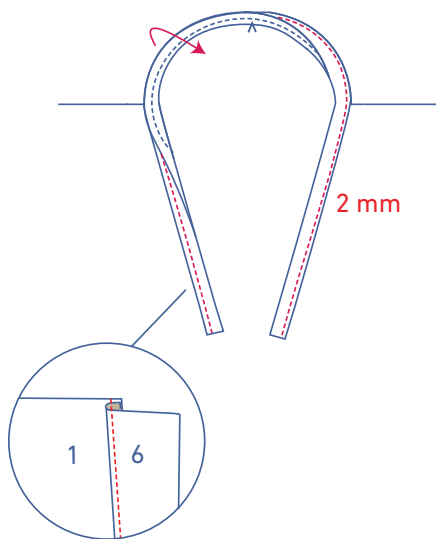


Press the neck bias tape (6) in half with the right side of the fabric turned outward.



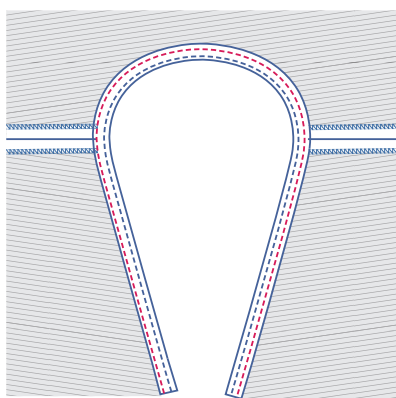
Pin both raw edges of the bias tape to the neckline along the right side of the work piece.



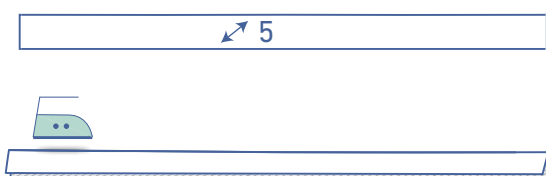


Sew into place at 0.5 cm.

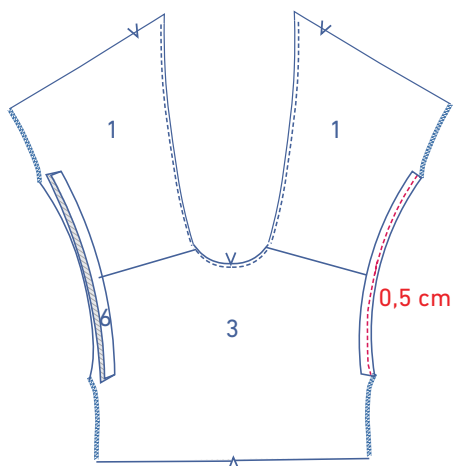
Fold the bias tape and the seam allowance out of the way and sew the bias tape into place at 2 mm from the seam through all layers (= the bias tape + the seam allowance underneath) of fabric.



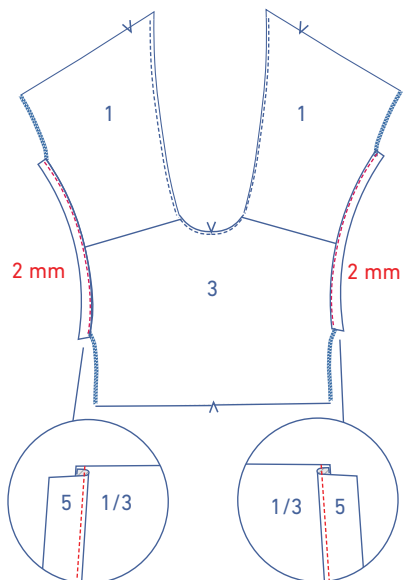
Fold the bias tape all the way over to the wrong side and sew it into place right next to the edge.



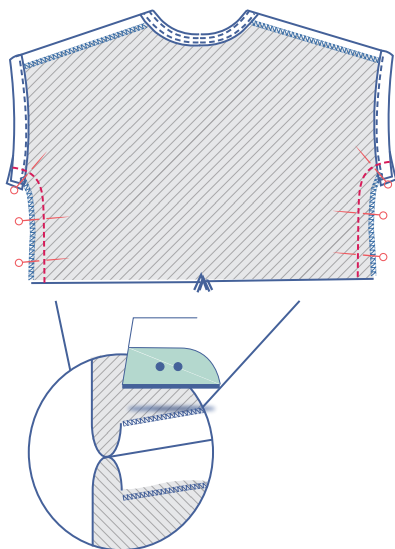
Press the armhole bias tape (5) in half with the right side of the fabric facing outwards.



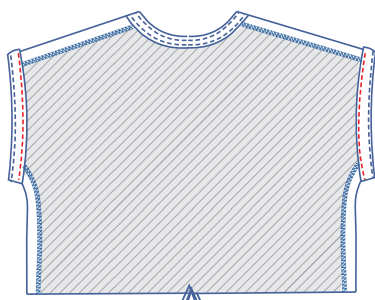
Pin both raw edges of the bias tape to the armhole along the right side of the work piece. Sew into place at 0.5 cm.



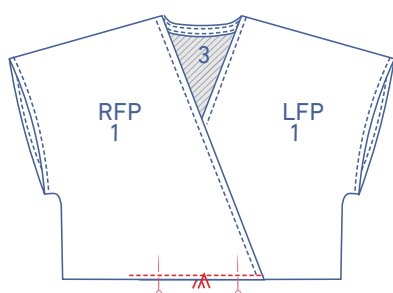
Fold the bias tape and the seam allowance out of the way and sew the bias tape into place at 2 mm from the seam through all layers (= the bias tape + the seam allowance underneath) of fabric.



Pin and sew the side seams (with the bias tape folded to the side throughout). Press the seam allowance open.



Fold the bias tape all the way over to the wrong side and sew it into place right next to the edge.

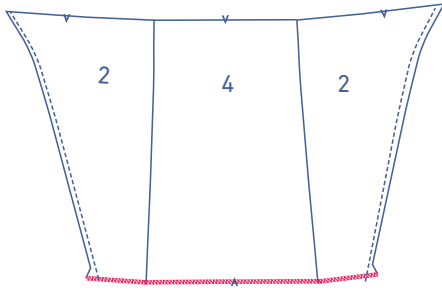


Pin the V notch that marks the CF of the RF to the matching V notch on the LF. Sew both pieces together, 0.5 cm from the bottom.

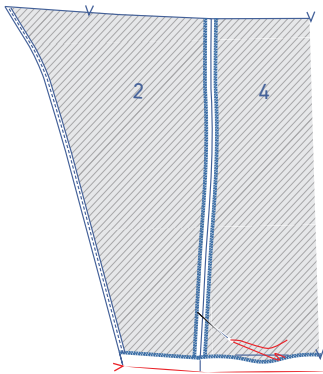


Technical drawing of a skirt. The main drawing shows a front view of a skirt with a waistband labeled 'W'. The skirt has a central crease and side pockets. Red dashed lines indicate the waistband and side pockets. Red circles with lines point to specific details. A circular inset shows a detail of the waistband, which is a green fabric with two buttons.

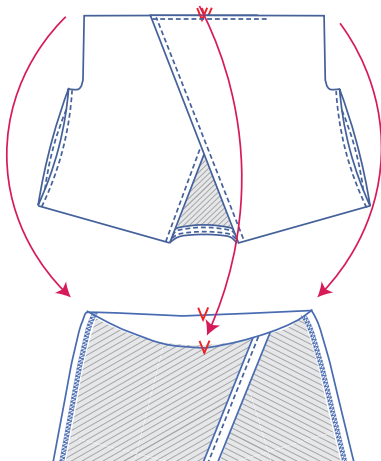
Fibre  ood #Vienna



Finish the hem using an overlock stitch.

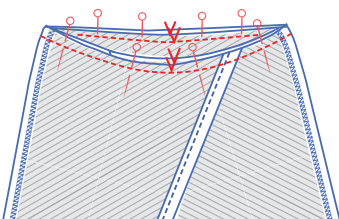


Press the seam allowance up to the V notches and sew in place.

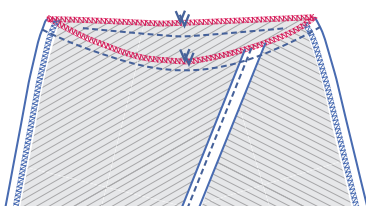


3

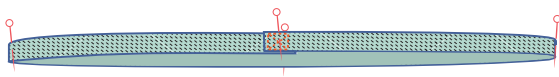
Slide the top into the skirt with the right sides facing, so that the waist seams line up.



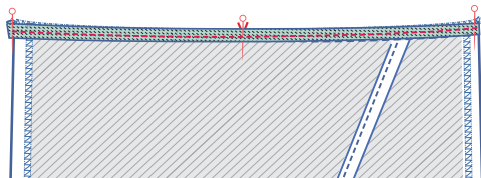
Pin and sew the top of the skirt to the bottom of the top, making sure that the nicks and side seams match perfectly.



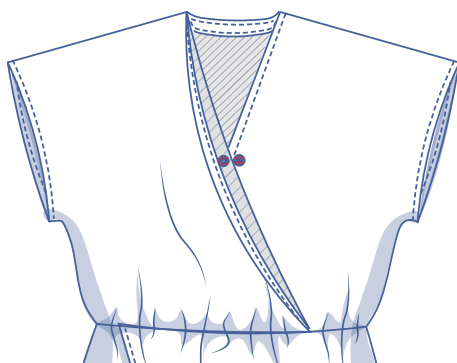
Finish the raw edges together using an overlock stitch.



Allow 3 cm of the ends of the elastic to overlap and sew in place. Divide the elastic band into 4 equal parts and pin each of these points.



Use the same pins to pin the elastic to the seam allowance at the CF, CB and side seams. Stretch the elastic out and sew in place on the seam allowance.

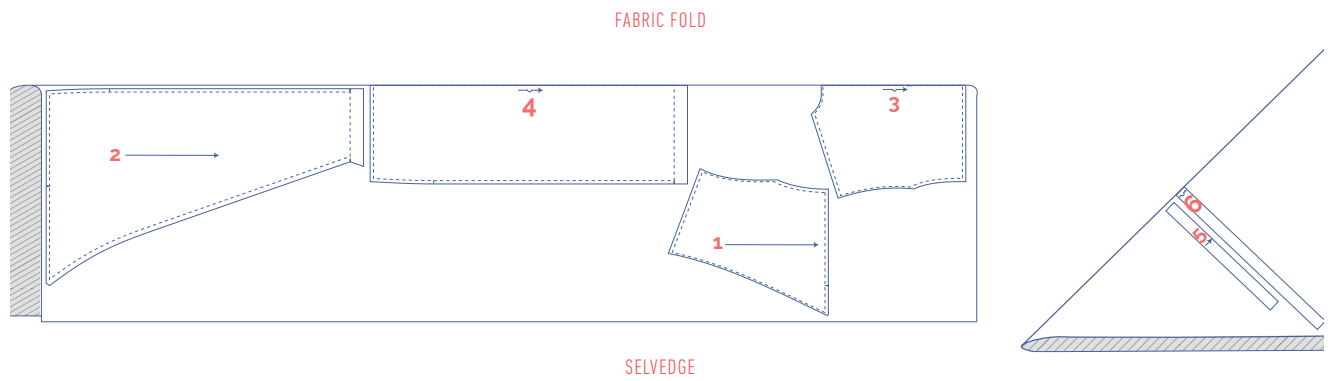


4

Sew a snap on if you like.

fabric plan for fabric 140 cm wide

for size 32 - 50



for size 52 - 58

