

Trish by Fibre ood

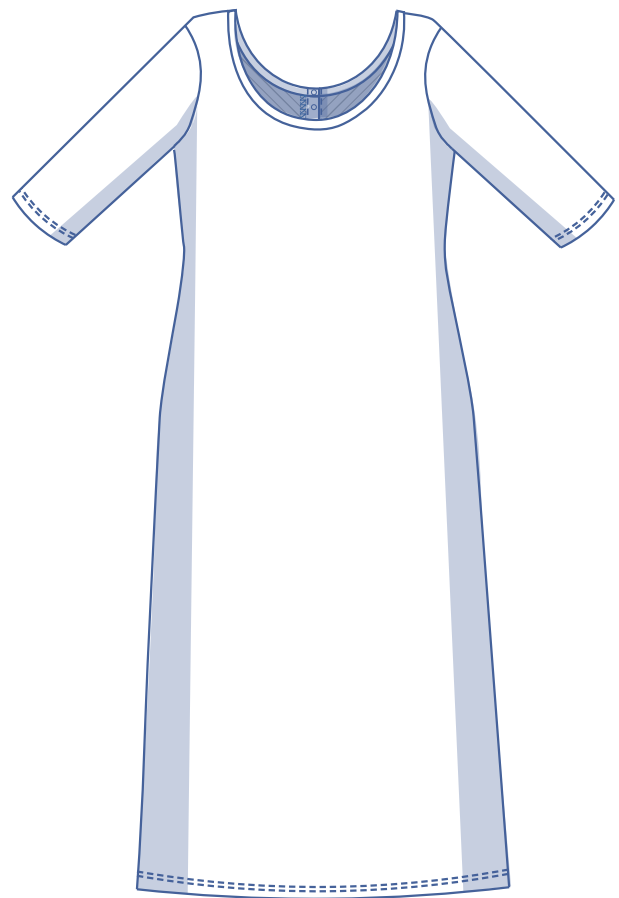
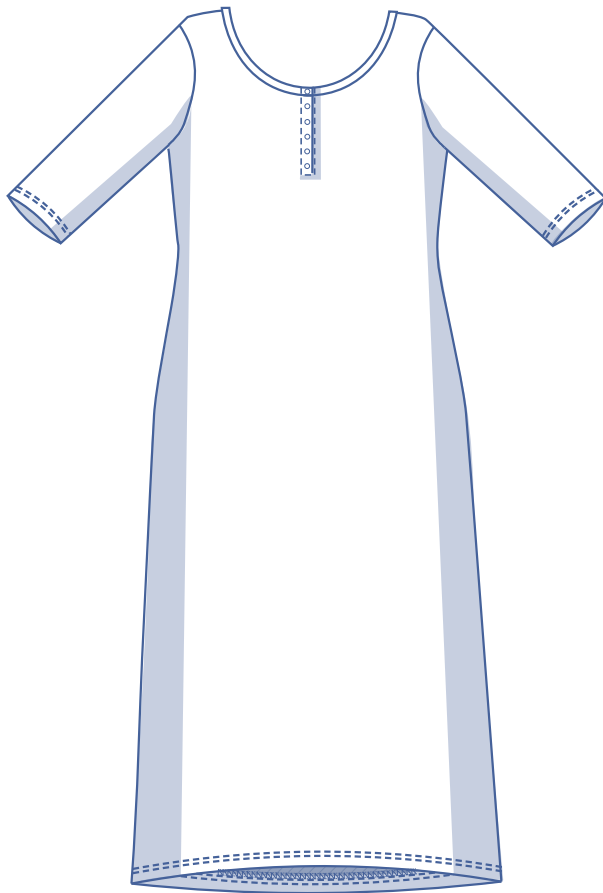


Trish by Fibre Mood



32 -58

Trish combines everything you love about the humble T-shirt into an easy-wearing midi length dress. The lovely scooped neckline sits lower at the back than the front and the polo closure adds a casual vibe. Semi-fitted and feminine, this dress can be worn with your favourite sneakers, sandals or heels.

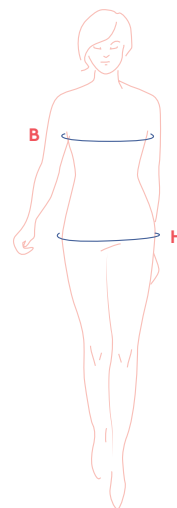


size chart

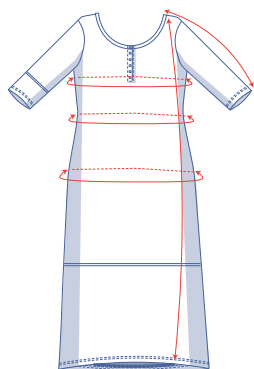
size (EU)	32	34	36	38	40	42	44	46	48	50	52	54	56	58
UK	4	6	8	10	12	14	16	18	20	22	24	26	28	30
US	0	2	4	6	8	10	12	14	16	18	20	22	24	26
B (cm)	76	80	84	88	92	96	100	104	110	116	122	128	134	140
H (cm)	86	90	94	97	100	103	106	109	115	120	125	130	135	140

Bust (B): measure horizontally around the fullest part of the bust.

Hips (H): Measure horizontally at the widest point of the lower body.



finished garment measurements(in cm)



Compare the stated lengths to the measured or desired lengths. **Lengthen** or **shorten** the dress and/or the sleeves by cutting the pattern pieces at the indicated double lines and then spreading the pattern pieces out X cm from each other or overlapping them where needed. Make sure that the CF and CB lines and the side seams are always straight.



IMPORTANT

Adapt the amount of fabric based on these alterations.

size	32	34	36	38	40	42	44	46	48	50	52	54	56	58
length	118	118.5	119	119.5	120	120.5	121	121.75	123.5	124.25	125	125.75	126.5	127.25
sleeve length*	36.75	37.5	38	38.5	39	39.75	40.25	40.75	41.75	42.5	43.25	44	44.75	45.5
bust	81	85	89	93	97	101	105	109	115.25	121.25	127.25	133.25	139.25	145.25
waistline measurement	77.5	79.5	81.5	85.5	89.5	93.5	95.5	99.5	106	112.5	119	125.5	132	138.5
hips	90.5	94.5	98.5	101.5	104.5	107.5	110.5	113.5	119.5	124.5	129.5	134.5	139.5	144.5

* Including the shoulder length.

supplies



- Thread
- Iron-on interfacing: max. 20 cm
- Jersey snaps (Ø 8 mm): 6
- Fabric: see table

fabric used (in cm) F collection	32	34	36	38	40	42	44	46	48	50	52	54	56	58
peach and khaki ribbed jersey fabric width 160 cm	165	165	165	170	170	170	175	175	180	180	180	180	185	185

Discover the Fibre Mood fabric collection and the accompanying fabric layouts [here](https://www.fibre mood.com/en/fabrics) or on www.fibre mood.com/en/fabrics.

fabric used (in cm) standard	32	34	36	38	40	42	44	46	48	50	52	54	56	58
fabric width 140 cm	165	165	165	170	170	170	175	175	180	280	290	300	310	315

The corresponding fabric layout can be found on the last page of these sewing instructions.

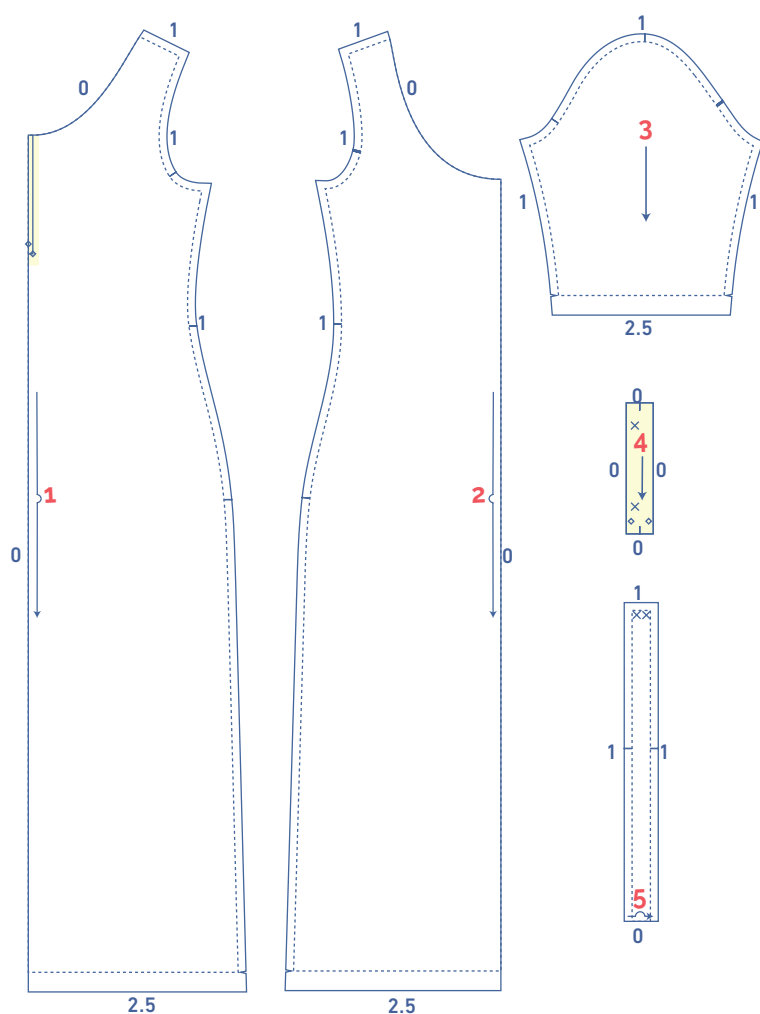
fabric advice



This pattern is suitable for stretch knits only. The ideal fabric for Trish has sufficient weight and won't cling too much, like this ribbed knit jersey. Discover the Fibre Mood fabric collection and the accompanying fabric layouts [here](#) or on www.fibre mood.com/en/fabrics.

pattern pieces & seam allowances (in cm)

To prepare the pattern before cutting you must first add the illustrated seam allowances around the paper pattern pieces as shown below.



1. front: 1x on fabric fold
2. back: 1x on fabric fold
3. sleeve: 2x
4. snap placket: 2x
5. neckline binding: 1x on fabric fold

IMPORTANT

The pieces highlighted in light yellow have iron-on interfacing attached to the wrong side.

Mark the following important points on the pattern:

- Mark the position of the snaps by using needle and basting thread (↪) to indicate the middle of the (X).

Mark the following important points on the outline of the pattern:

- Snip the pattern paper and fabric at the places where a single vertical line (I) and double vertical (II) lines are indicated.
- Cut a small corner out of the fabric at the V notch or on the finished hemline.
- Cut a small corner (V notch) out of the pieces that lie on the fabric fold to mark the middle of these pieces.

sewing instructions



The method used to finish sewing the garment seams depends on the fabric used. The pieces are always sewn together with right sides facing, unless stated otherwise.

F front

B back

RF right front

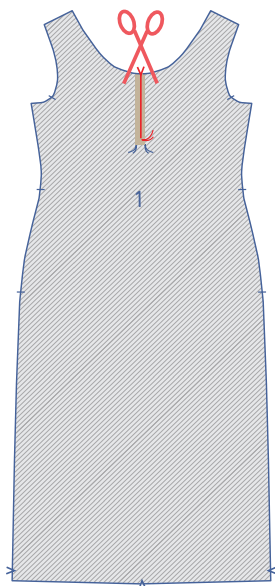
LF left front

CF centre front

CB centre back

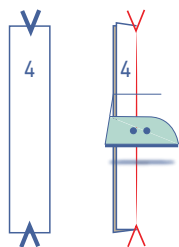
 right side

 wrong side



1

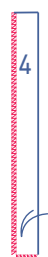
Carefully cut into the front (1) along the CF line stopping at the basting.



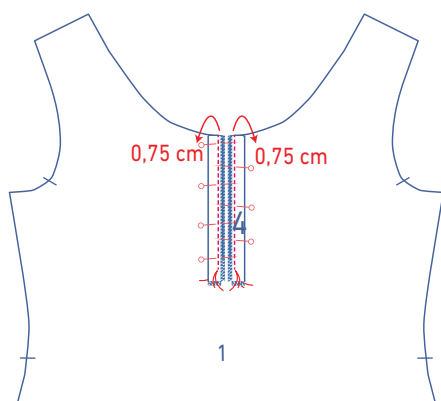
Press the plackets (4) in half lengthwise.



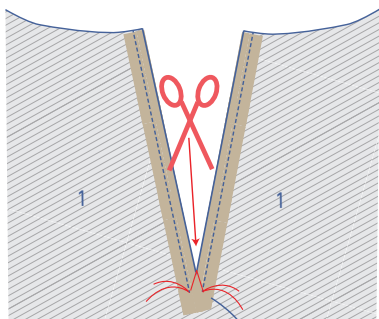
Use a basting thread (= double layer) to mark the indicated points.



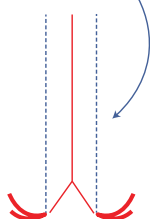
Finish the side and bottom using an overlock stitch. Repeat for the second placket.

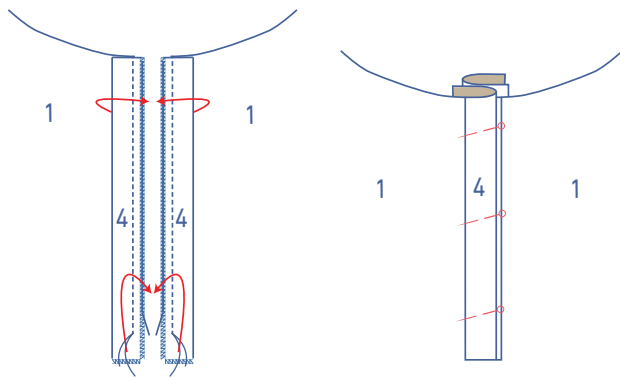


Pin the overlocked edges next to the CF line. Pin at 0.75 cm from the edge right up to the basting thread.

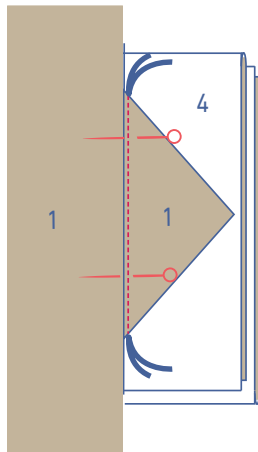


Starting from the CF line, cut diagonally until you've hit the basting. To do this, be sure to move the plackets out of the way.

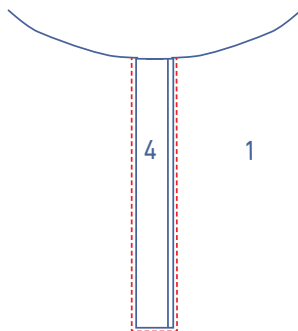




Fold the plackets towards the middle so that the folded edges are always facing the middle. The placket of the RF should be on top of the LF. Pin these together. Fold the bottoms and the triangle of the shaped front through to the inside.



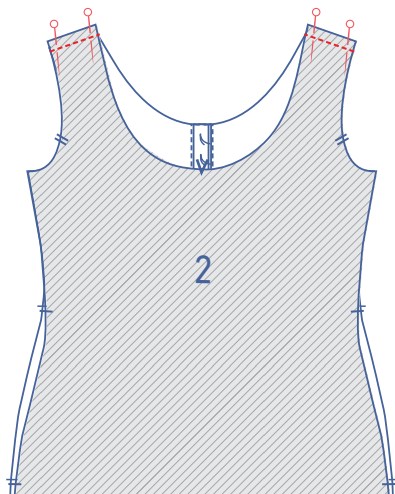
Secure the bottom of the placket by sewing a straight line through the horizontal edge of the triangle and both plackets.

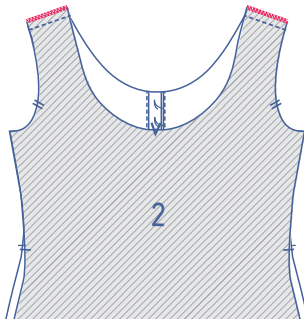


On the right side of the fabric, topstitch right next to the seam along the bottom and sides of the sewn plackets.

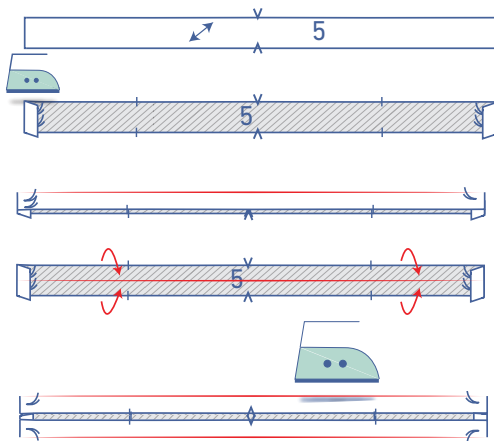
2

Pin and sew the shoulder seams.





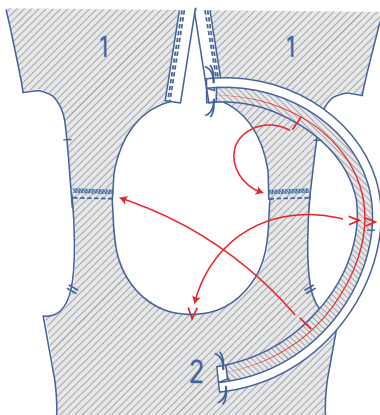
Finish the raw edges together using an overlock stitch.



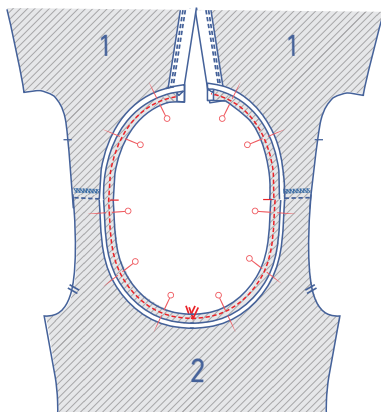
3

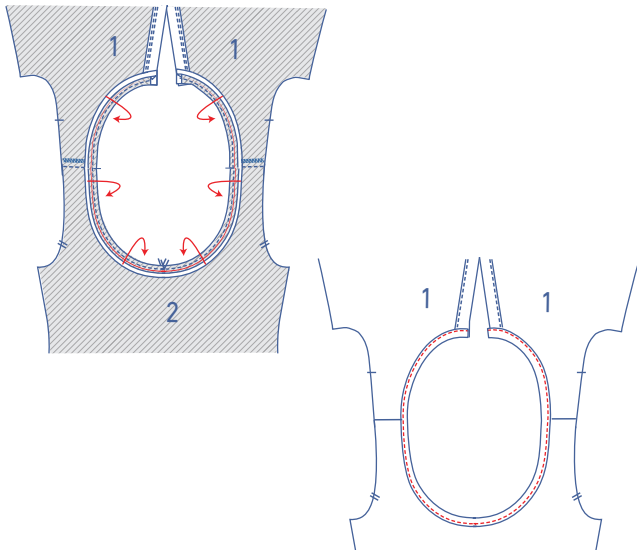
Press the short edges of the neckline binding (5) over to the wrong side by 1 cm.

Fold them in half lengthwise and press. Fold back open and press the raw edges to meet the centre most fold.

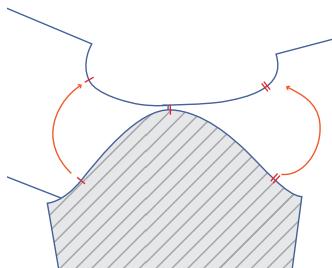


Pin and sew the right side of the binding to the wrong side of the neckline, with the markings matching. Note: the binding length is smaller than the neckline itself. That means you need to stretch the binding to fit the neckline.



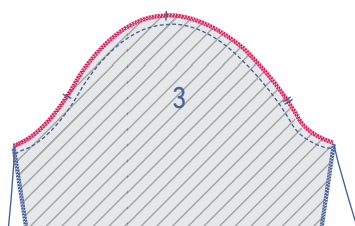
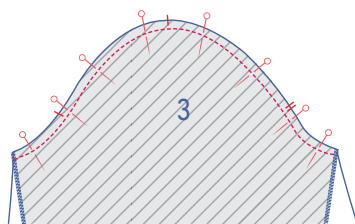


Fold the binding over to the right side of the work piece with the fold line right on top of the previous stitching. Pin and sew in place close to the edge.



4

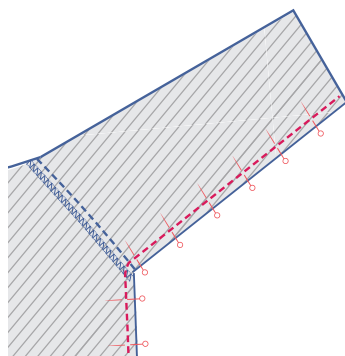
Pin and sew the top of the sleeve (3) (= the sleeve cap) to the armhole with the corresponding snips matching exactly. The single snip marks the front, while the double snips mark the back. The single snip at the top matches the shoulder seam exactly. Distribute the 'excess' fabric evenly between the snips and sew.

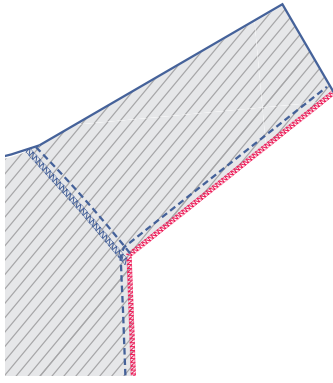


Finish the raw edges together using an overlock stitch.

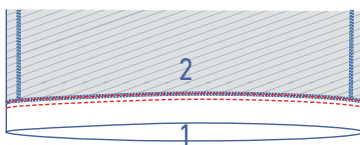
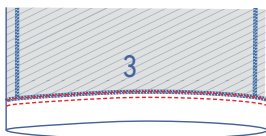
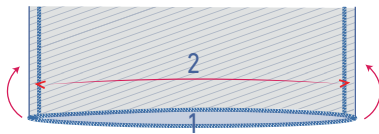
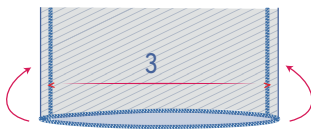
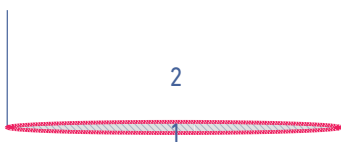
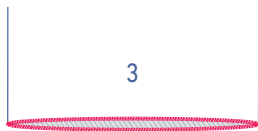
5

Pin and sew the underarm and side seams.





Finish both raw edges together using an overlock stitch.

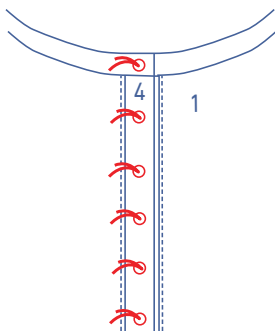


6

Finish the hems using an overlock stitch.

Press the hem allowance over to the V notches.

Sew in place with two rows of top-stitching.

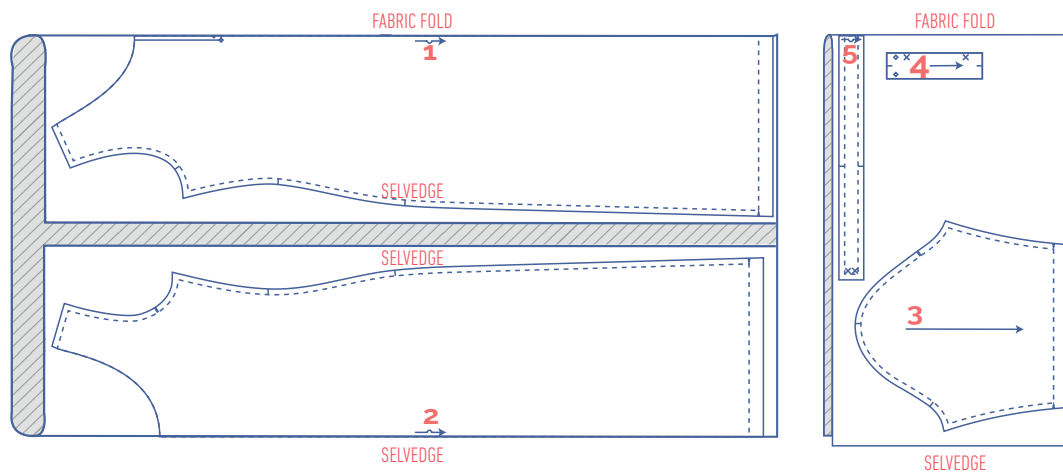


7

Attach the snaps at the indicated markings. The snap location on the neckline binding has been marked, along with the top and bottom snaps on the plackets. Divide the distance equally to determine the position of the other snaps.

fabric layout for fabrics 140 cm wide

size 32 - 48



size 50 - 58

