

Summer by Fibre ⚡ood

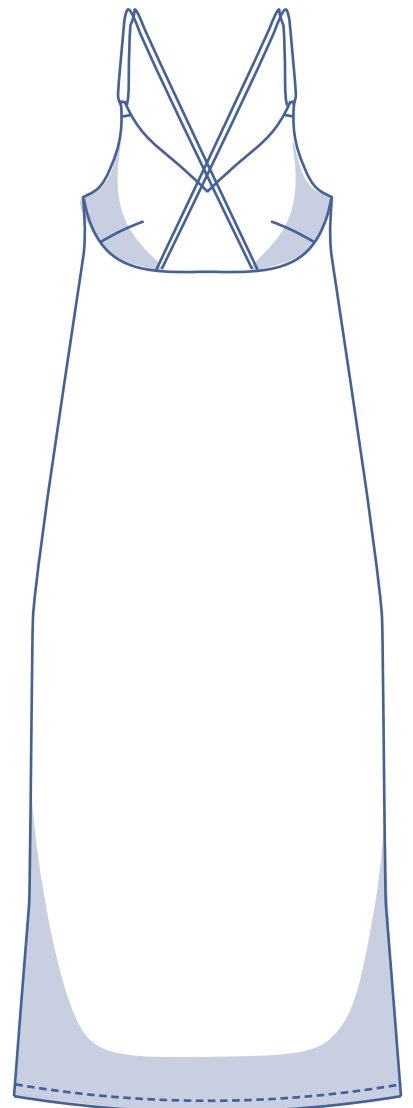
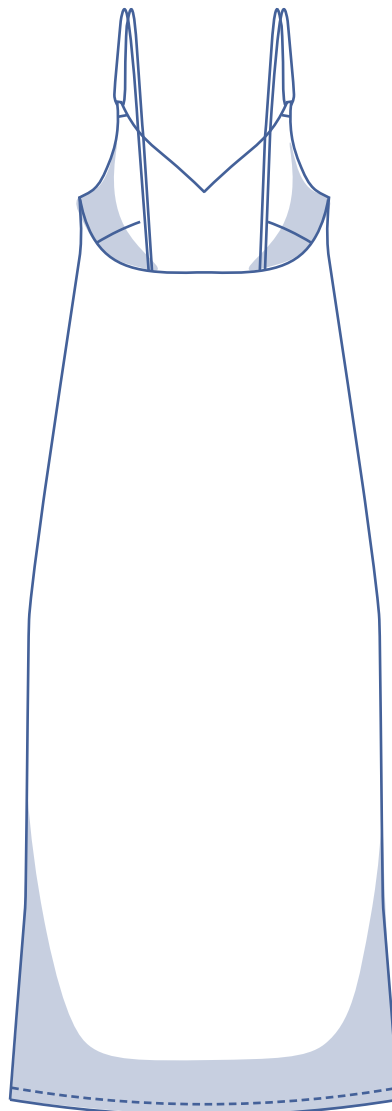
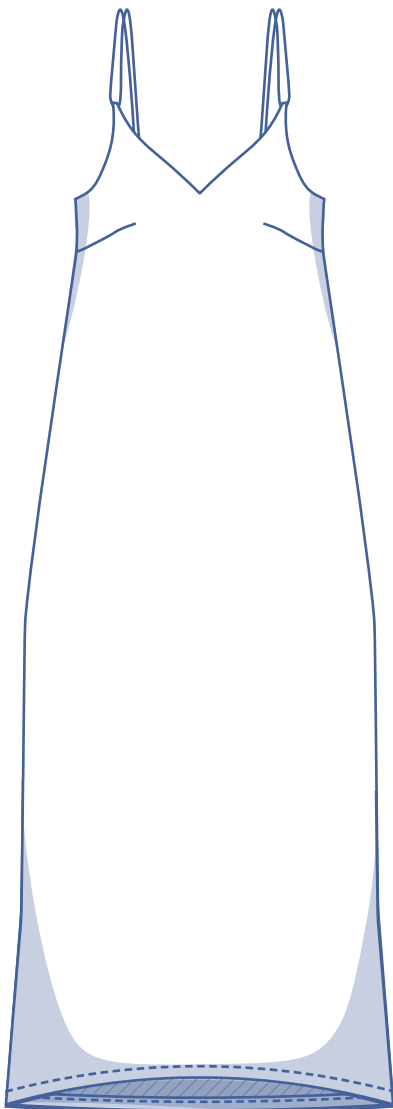


Summer by Fibre ⚡ood



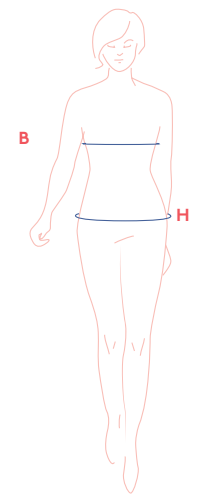
32 - 58

Slip dresses are having a moment in the spotlight and it's not hard to see why. The Summer Slip is an absolute must-sew that will become one of your wardrobe essentials this season. Versatile and easy to wear, you can style it for daywear with sneakers or heels for after 5pm. Make it midi or maxi length to suit you!



size chart

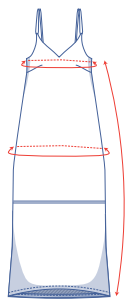
size (EU)	32	34	36	38	40	42	44	46	48	50	52	54	56	58
UK	4	6	8	10	12	14	16	18	20	22	24	26	28	30
US	0	2	4	6	8	10	12	14	16	18	20	22	24	26
B (cm)	76	80	84	88	92	96	100	104	110	116	122	128	134	140
H (cm)	86	90	94	97	100	103	106	109	115	120	125	130	135	140



Bust (B): measure horizontally around the widest part of the bust.

Hips (H): measure horizontally around the widest part of the lower body.

finished garment measurements(in cm)



Compare the stated lengths to the measured or desired lengths. **Lengthen** or **shorten** the dress by cutting the pattern pieces at the height of the indicated double lines and by moving the pattern pieces X cm apart or on top of each other as required. Make sure that the CF and CB lines and the side seams are always straight.



IMPORTANT

Adjust the fabric to be used based on these alterations.

size	32	34	36	38	40	42	44	46	48	50	52	54	56	58
side length	108	108	108	108	108	108	108	107.75	107.75	107.75	107.75	107.75	107.75	107.75
bust	75	78.75	82.5	86.25	90	93.75	97.5	101.25	108	113.5	119	124.5	129.75	135.25
hips	104.25	108.25	112.25	115.25	118.25	121.25	124.25	127.25	132.25	137.25	142.25	147.25	152.25	157.25

supplies



- Thread
- Scrap of iron-on interfacing
- Ribbon or braided cord: see table*
- Fabric: see table

IMPORTANT

* These are only suggested measurements for the length of the shoulder straps. The length depends on the material used and whether you go for standard shoulder straps or cross back straps. Try on the dress (make sure that the bust dart/dart is at the right height) and measure the length of the shoulder straps (based on your preferred style).

ribbon or braided cord (in cm)	32	34	36	38	40	42	44	46	48	50	52	54	56	58
straight back straps	2x 74	2x 75	2x 76	2x 77	2x 78	2x 79	2x 79.5	2x 80	2x 82	2x 83	2x 84	2x 85	2x 86	2x 87
crossed back straps	2x 90	2x 91	2x 92	2x 93	2x 94	2x 95	2 x 96	2x 97	2x 100	2x101	2x102	2x104	2x105	2x 106

fabric used (in cm) F collection	32	34	36	38	40	42	44	46	48	50	52	54	56	58
orange fabric fabric width 142 cm	145	145	145	240	245	245	245	245	250	300	300	305	305	310
blue fabric fabric width 140 cm	145	145	240	240	245	245	245	245	250	300	300	305	305	310

Discover the Fibre Mood fabric collection and the accompanying fabric layouts [here](https://www.fibremood.com/en/fabrics) or on www.fibremood.com/en/fabrics.

fabric used (in cm) standard	32	34	36	38	40	42	44	46	48	50	52	54	56	58
fabric width 140 cm	145	145	240	240	245	245	245	245	250	300	300	305	305	310

The corresponding fabric layout can be found on the last page of these sewing instructions.

fabric advice



This dress begs to be made in a beautiful woven fabric. Satin is a popular choice for slip dresses, you'll have seen it often. The list of options is endless: linen, viscose, polyester, silk, plain or print... they all work! Discover the Fibre Mood fabric collection and the accompanying fabric plans [here](#) or on www.fibremood.com/en/fabrics.

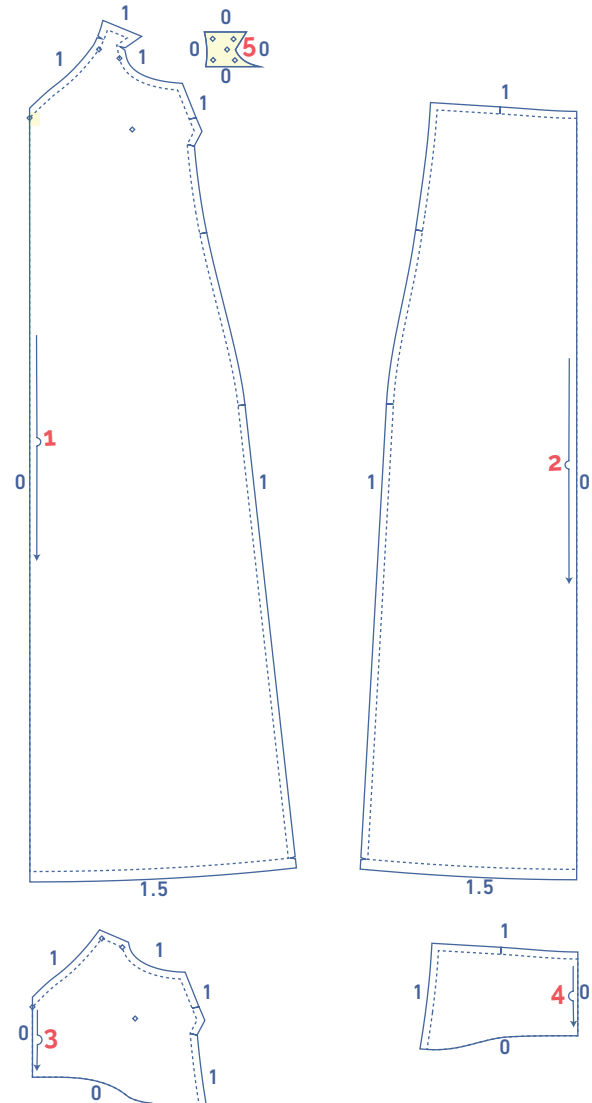
pattern pieces & seam allowances (in cm)

To prepare the pattern before cutting you must first add the illustrated seam allowances around the paper pattern pieces as shown below.

1. front: 2x
2. back: 1x on fabric fold
3. front facing: 1x on fabric fold
4. back facing: 1x on fabric fold
5. loop facing, front: 2x

IMPORTANT

The pieces highlighted in light yellow have iron-on interfacing attached to the wrong side.



Mark the following important points on the pattern.

- Mark the tip of the bust dart and the corners of the loop for the shoulder straps using needle and basting thread (↪) to mark the middle of the (◇).

Mark the following important points on the outline of the pattern.

- Snip the pattern paper and fabric at the places with a single vertical line (|).
- Cut a small corner out of the fabric at a V notch or at the finished hem-line.
- Cut a small corner (V notch) out of the pieces that lie on the fabric fold to mark the middle of these pieces.

sewing instructions



The method used to finish sewing the garment depends on the fabric used. The pieces are always sewn together with the right sides of the fabric matching exactly, unless stated otherwise.

F front

B back

CF centre front

CB centre back



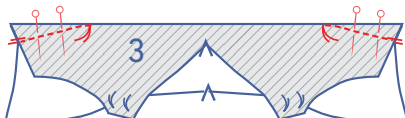
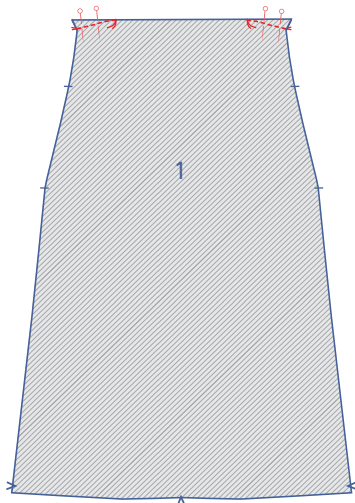
right side



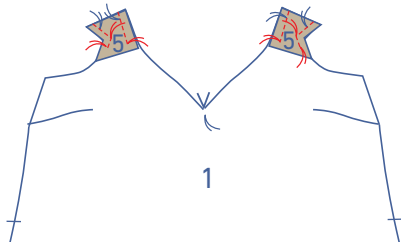
wrong side

1

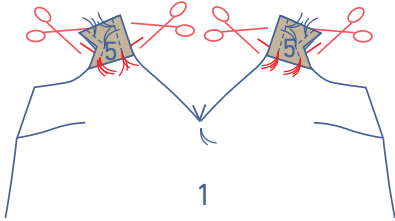
To create the bust darts: fold the fabric with right sides facing, matching the side seam markings. Pin and sew the darts towards the basting thread.



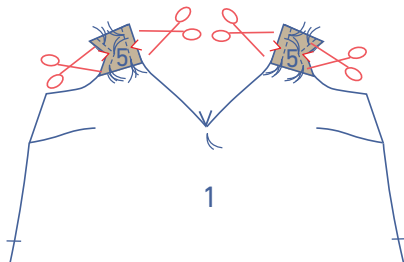
Repeat for the front facing (3).



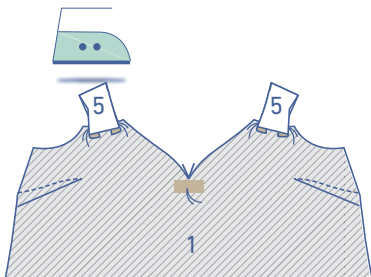
Lay the piece of front loop facing (5) on top of the front with the right sides together and the edges matching. This piece will be used to neatly finish the loop that the shoulder straps will be threaded through. Sew the two sides parallel to the edge. Start sewing at the raw edge (top) and continue until you've reached the basting.



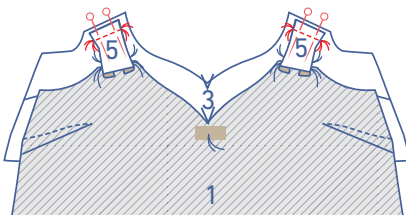
Snip into the seam allowance of the front until just before the basting so that you can turn the loop inside out.



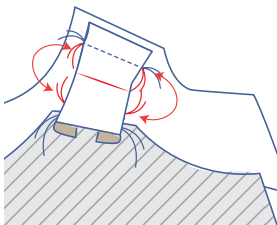
Trim the seam allowance at the middle of the loop.



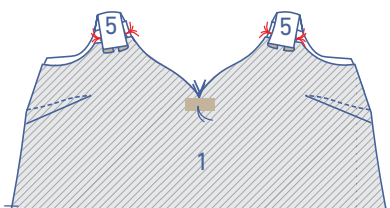
Turn the loop inside out.

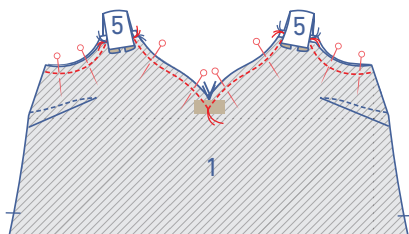


Pin and sew the short side of the loop to the short side of the facing. Sew in place between the basting threads.



Now, fold the loop in half lengthwise so that the basting threads are matched.





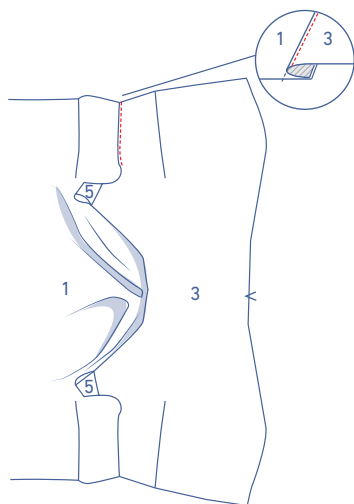
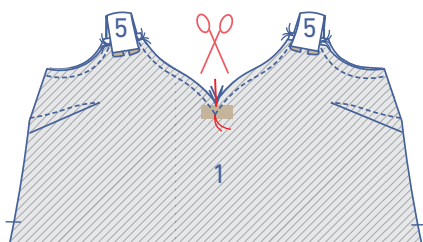
Pin the armhole up to the basting and sew in place. When doing this, be sure to move all of the seam allowances out of the way.

Snip off the excess seam allowance.

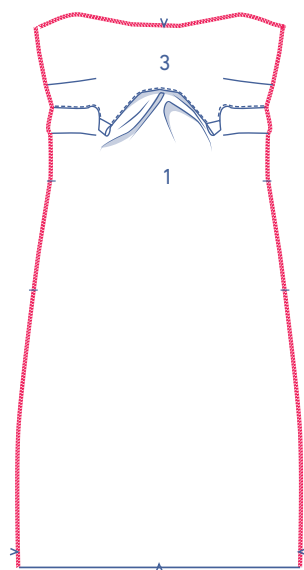
Pin and sew the neckline from the basting at the top until the lowest point of the basting that marks the deepest point. Allow the needle to remain in the fabric. Lift the presser foot, turn the piece and lower the presser foot back down. Sew the other piece of the neckline up to the basting. Always be sure that all seam allowances have been moved to the side.

Trim off the excess seam allowance.

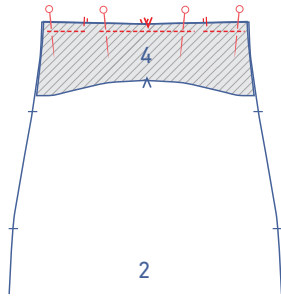
Trim into the tip through both seam allowances until just before the basting. This makes it possible to turn the dress out the right way.



Fold the facing and seam allowances away from the dress and understitch the facing through all layers, 2 mm from the seam.

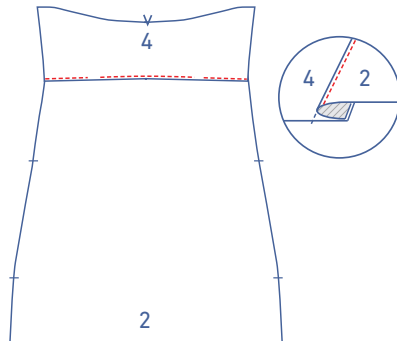


Finish the indicated edges using an overlock stitch.

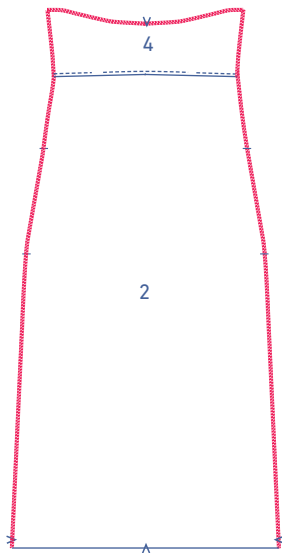


2

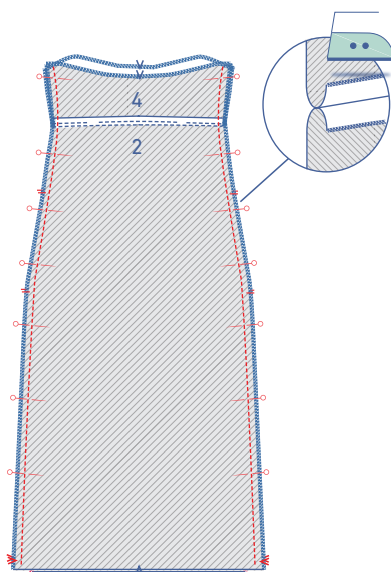
Pin and sew the top of the back facing (4) to the top of the back, but remember to leave an opening for the marked locations of the shoulder straps.



Fold the back facing and seam allowances away from the dress and understitch the facing through all layers, 2mm from the seam. Avoid the openings.



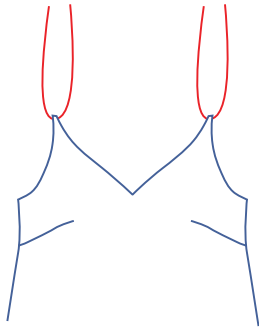
Finish the marked edges using an overlock stitch.



3

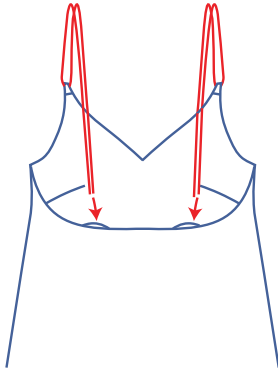
Pin and sew the side seams (with the facing folded up).

Press the seam allowance open.

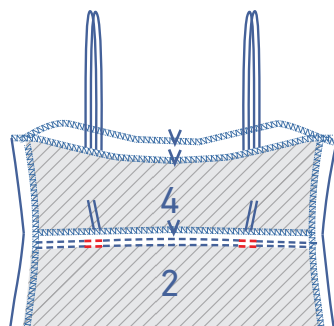
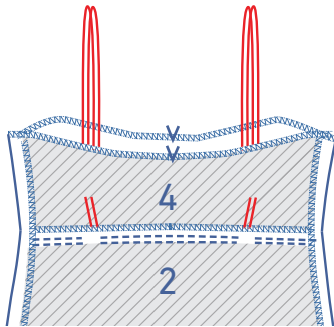


4

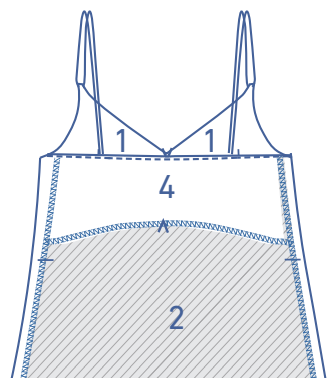
Slide the shoulder straps through the loops on the front.



Slide the ends through the openings in the back and try the dress on to double check straps are the correct length.

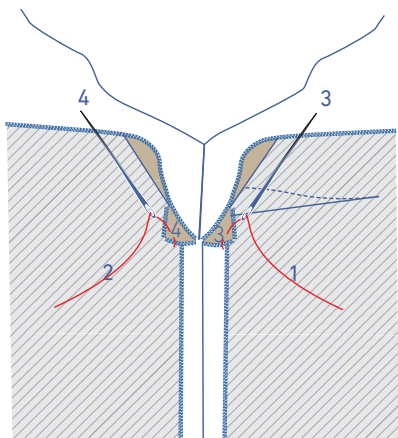


Sew the ends in place and finish the stitching on the facing (through all layers of fabric).

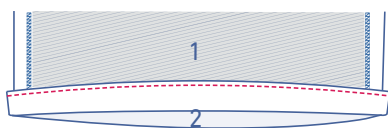
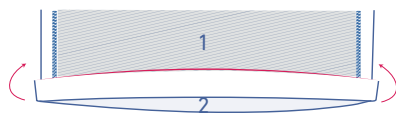
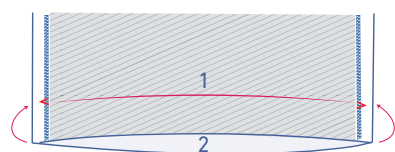
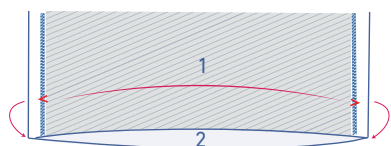
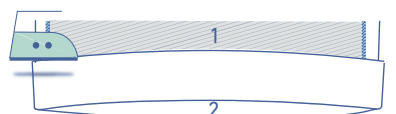


5

Fold the facing down.



Handstitch the side seams to the bust dart to secure in place.



6

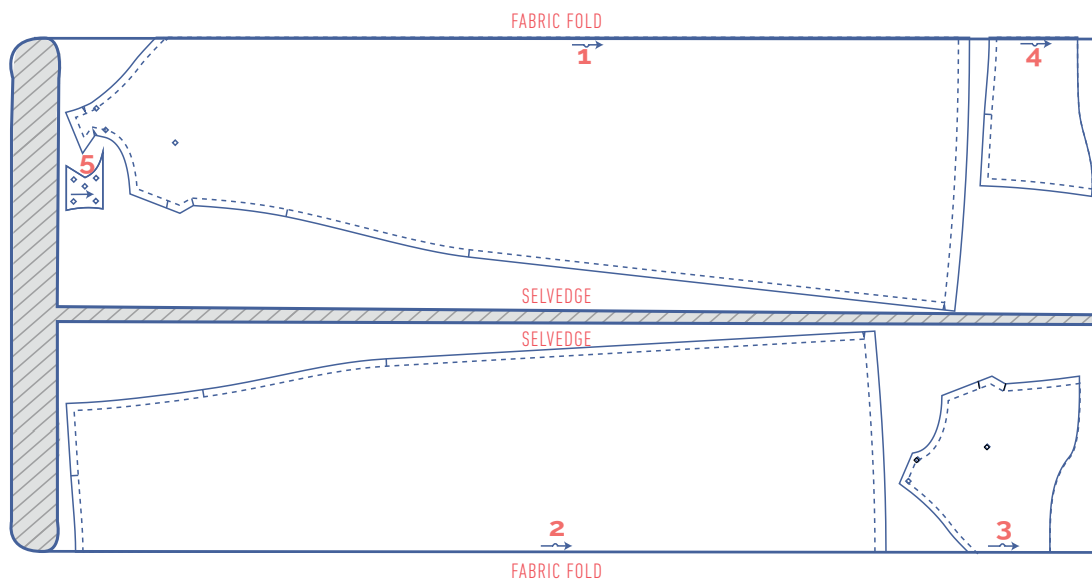
Press the hem allowance up to the V notches and then unfold.

Place the raw edge along the pressed crease and then fold once again.

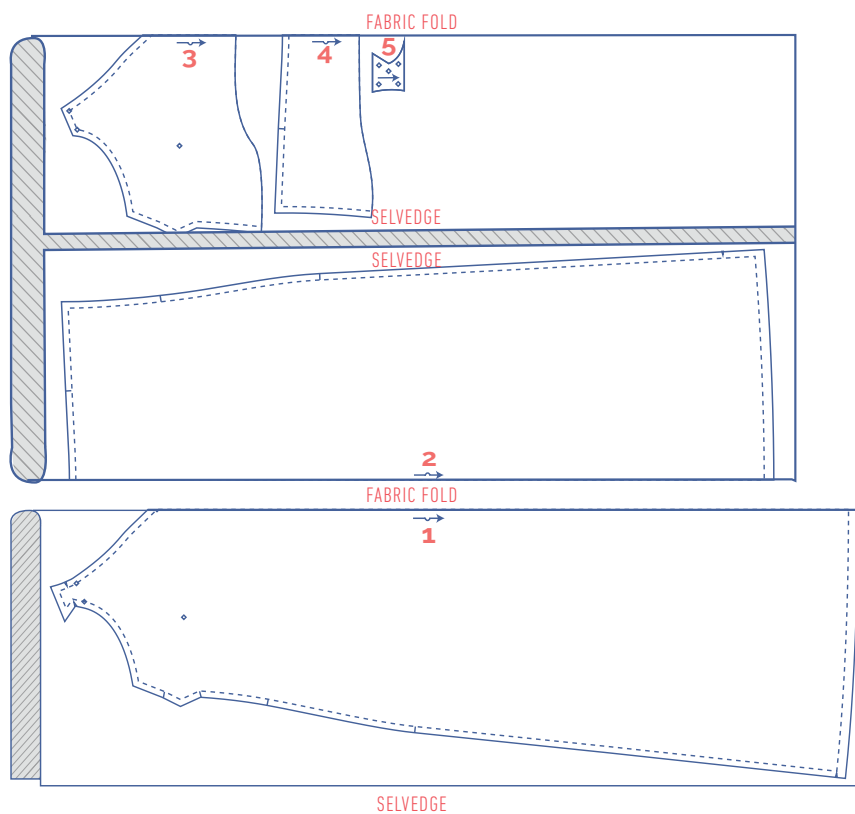
Sew in place next to the edge.

fabric layout for fabrics 140 cm wide

size 32- 34



size 36 - 48



size 50 - 58

