

Jutta by Fibre ⚡ood

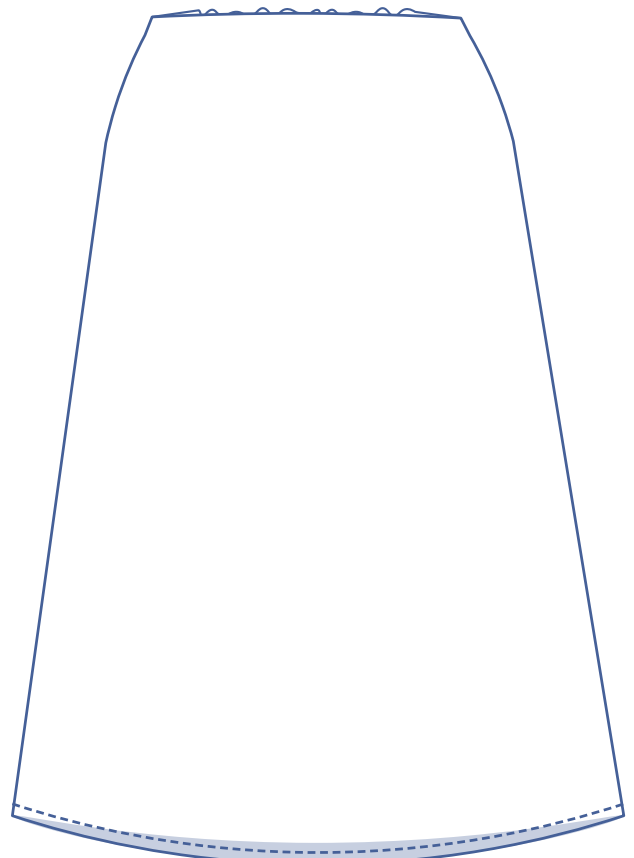
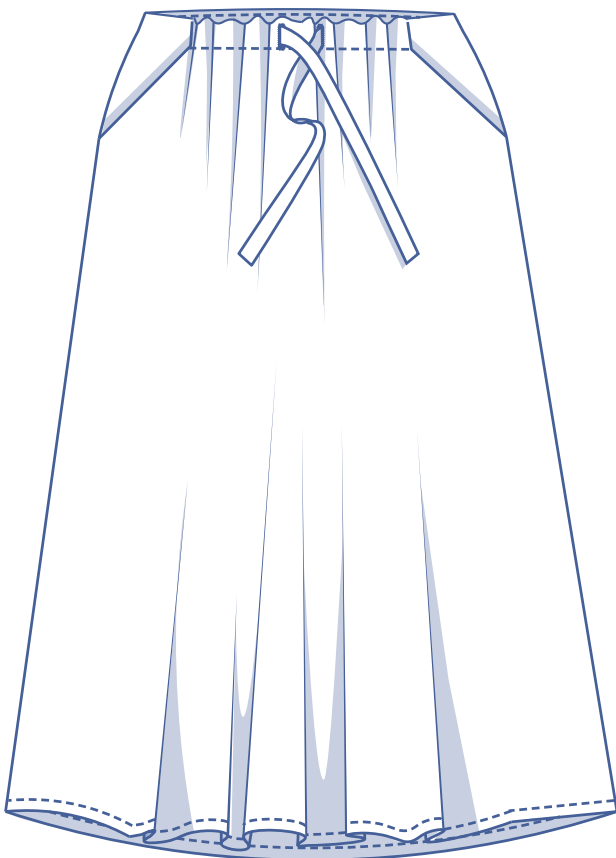


Jutta by Fibre ⚡ood



XS - XXXL

Jutta is an A-line skirt with very comfortable slit pockets. The chord used to close the skirt gives your waist a striking touch. It falls to just below the knee and has the option to be worn fitted on the waist or loose around the hips. Jutta will take you from beach to bar, all season long!

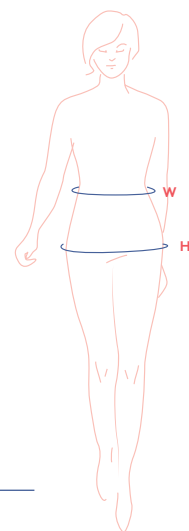


Size Chart

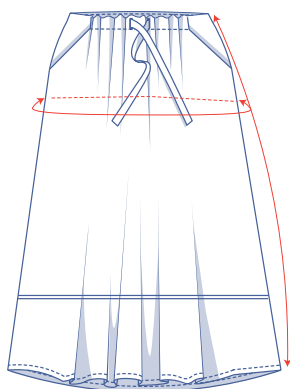
size	XS		S		M		L		XL		XXL		XXXL		
EU	32	34	36	38	40	42	44	46	48	50	52	54	56	58	60
UK	4	6	8	10	12	14	16	18	20	22	24	26	28	30	32
US	0	2	4	6	8	10	12	14	16	18	20	22	24	26	28
WM (cm)	66	68	70	74	78	82	84	88	94.5	101	107.5	114	120.5	127	133.5
H (cm)	86	90	94	97	100	103	106	109	115	120	125	130	135	140	145

Waist (W): measure horizontally at the narrowest point of the body.

Hip (H): measure horizontally around the widest part of the lower body.



measurements(in cm)



size	XS	S	M	L	XL	XXL	XXXL
length	74.75	75	75.5	77.75	80.25	80.75	81
hips	119.75	127.75	134	140.25	149.5	160.5	171.75

Compare the stated lengths to the measured or desired lengths. **Lengthen** or **shorten** the skirt by cutting the pattern pieces at the indicated double lines and then spreading the pattern pieces out X cm from each other or overlapping them, where necessary. Make sure that the CF and CB lines and the side seams are always straight.



IMPORTANT

Adapt the amount of fabric based on these alterations.

supplies



- Thread
- Iron-on interfacing: max. 20 cm
- Fabric: see table

fabric used (in cm) F collection	XS	S	M	L	XL	XXL	XXXL
white fabric fabric width 120 cm	210	210	215	215	220	240	245

Discover the Fibre Mood fabric collection and the accompanying fabric layouts [here](https://www.fibremood.com/en/fabrics) or on www.fibremood.com/en/fabrics.

fabric used (in cm) standard	XS	S	M	L	XL	XXL	XXXL
fabric width 140 cm	180	180	180	185	220	220	220

The corresponding fabric layout can be found on the last page of these sewing instructions.

fabric advice



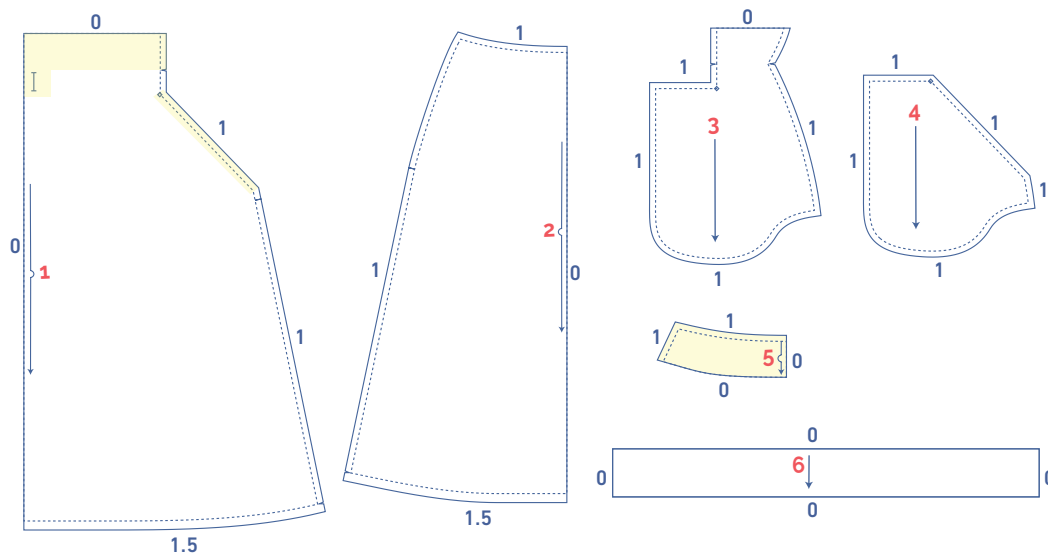
We made this skirt in a fabric with a fluid drape (viscose/crepe, silk, etc.). However, fabrics with some body such as cotton or linen work just as nicely and the extra volume will turn the skirt into a statement piece. Discover the Fibre Mood fabric collection and the accompanying fabric layouts [here](https://www.fibre mood.com/en/fabrics) or on www.fibre mood.com/en/fabrics.

pattern pieces & seam allowances (in cm)

To prepare the pattern before cutting you must first add the illustrated seam allowances around the paper pattern pieces as shown below.

1. front: 1x on fabric fold
2. back: 1x on fabric fold
3. pocket opening: 2x
4. inner pocket bag: 2x
5. back facing: 1x on fabric fold
6. ribbons: 2x. You will need to draw this pattern piece yourself using the measurements in the table (in cm):

size	XS	S	M	L	XL	XXL	XXXL
width	69	71	72.5	74	76.25	78.75	81.25
height	8	8	8	8	8	8	8



IMPORTANT

The pieces highlighted in light yellow have iron-on interfacing attached to the wrong side.

Mark the following important points on the pattern:

- Mark the position of the pocket with a basting thread (↖) by using a needle and thread to indicate the middle of the (◇).
- Mark the button hole (↔) by using needle and basting thread (↖) to indicate the tops and bottoms.

Mark the following important points on the outline of the pattern:

- Snip the pattern paper and fabric at the places where a single vertical line (I) and double vertical lines (II) are indicated.
- Cut a small corner out of the fabric where a V notch or at the finished hemline.
- Cut a small corner (V notch) out of the pieces that lie on the fabric fold to mark the middle of these pieces.

sewing instructions



The method used to finish sewing the garment seams depends on the fabric used. The pieces are always sewn together with right sides facing, unless stated otherwise.

F front

B back

CF centre front

CB centre back



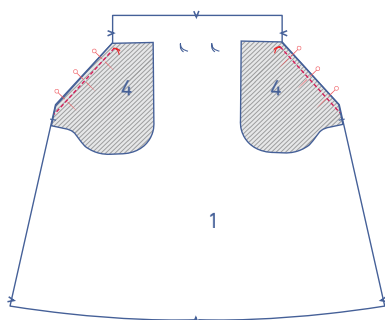
right side



wrong side

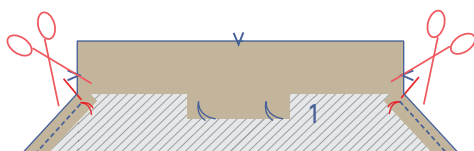


iron-on interfacing

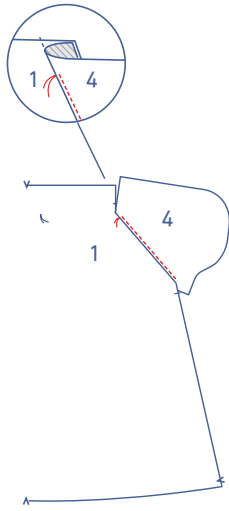


1

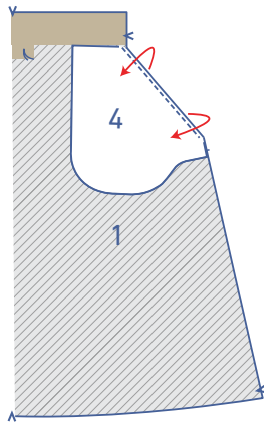
Pin the slanted side of the inner pocket bag (4) to the slanted side of the front (1). Stitch right into the basting.



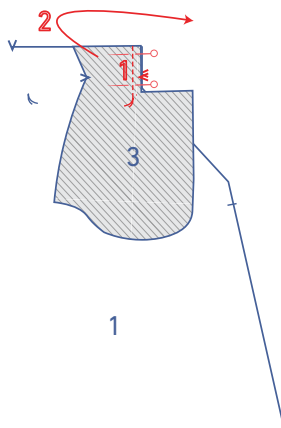
Carefully cut into the seam allowance at the basting threads, without cutting through them.



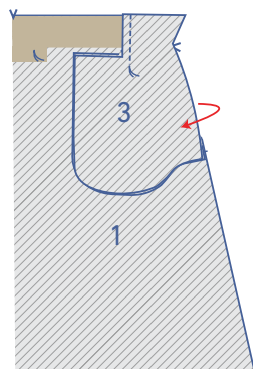
Fold the inner pocket lining and seam allowance away from the skirt and understitch the inner pocket lining at 2 mm from the edge, through both layers.



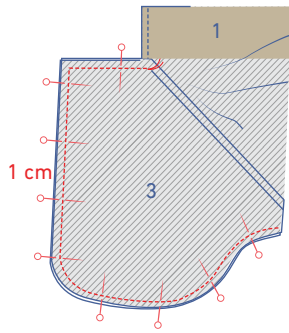
Press the pocket over to the inside of the front skirt.



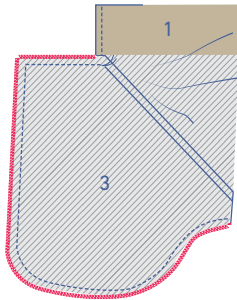
Pin the straight vertical side of the pocket opening (3) to the straight vertical side of the front and sew right up into the basting.



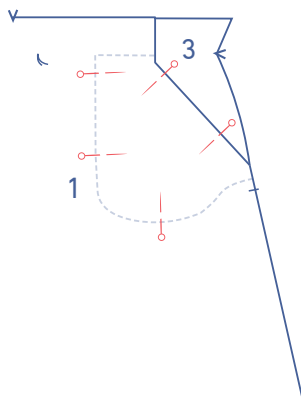
Fold the pocket opening back to the side so that the pocket pieces lie under the front.



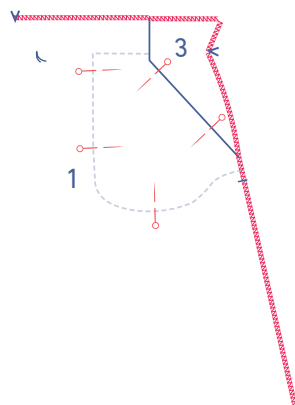
Pin the edges of the pocket pieces together and sew in place with a 1 cm seam.



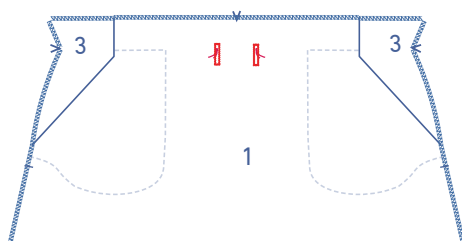
Finish the raw edges together using an overlock stitch.



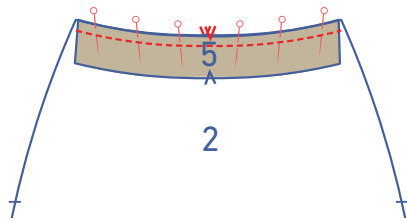
Pin the pocket pieces neatly in place to the front.



Finish the top and right raw edge of the shaped facing using an overlock stitch.

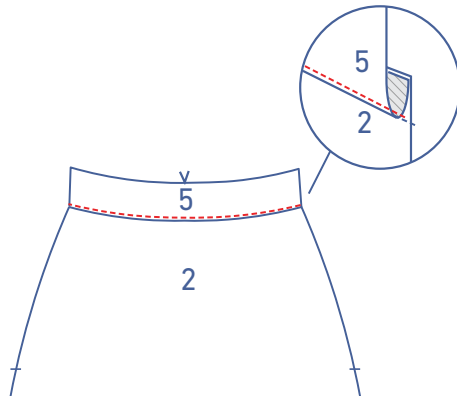


Make vertical buttonholes at the markings.

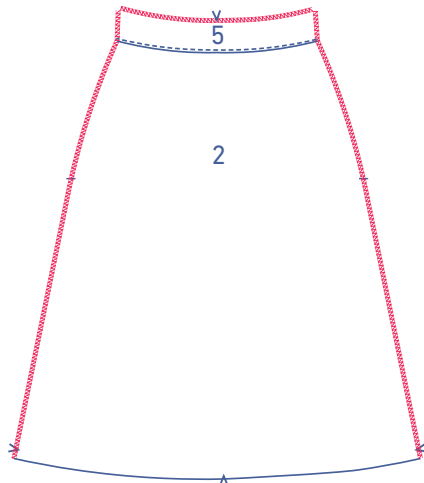


2

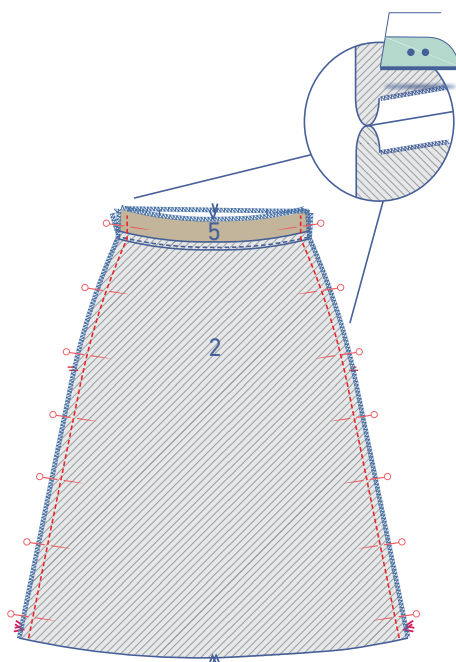
Pin the back skirt facing piece to the back skirt with right sides together, matching notches. Stitch.



Fold the seam allowances towards the facing and topstitch through all layers from the outside at 2 mm.

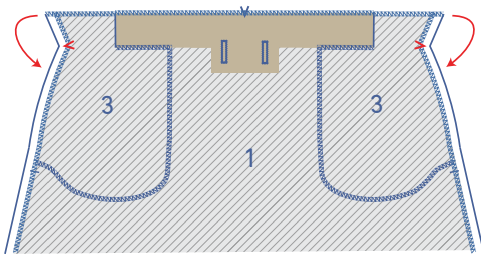


Finish the raw edge of the facing and skirt sides with an overlock stitch.



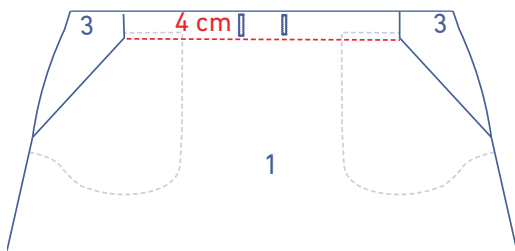
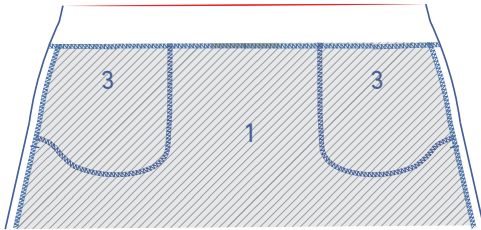
3

Pin and sew the side seams (with the facing folded up) and press the seam allowance open.



4

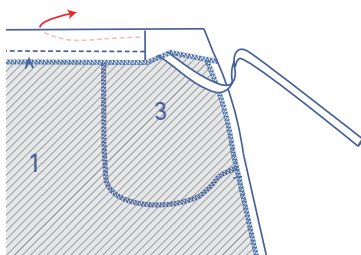
Press this side over to the V notches on the wrong side.



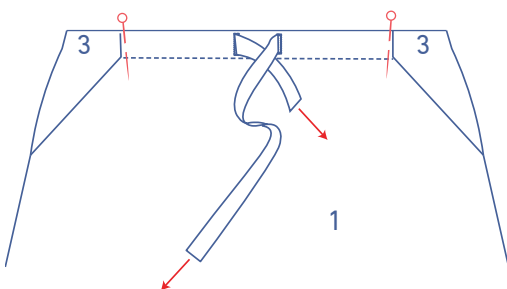
To create the drawstring casing, topstitch at 4 cm in from the edge, starting and finishing at the pocket corners. This will also secure the pocket pieces.

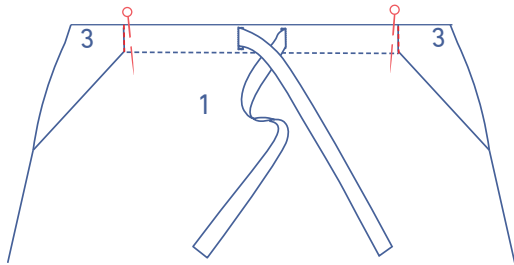


Fold the ties (5) in half lengthwise with the right side of the fabric facing and press. Sew the indicated sides and turn out the right way.

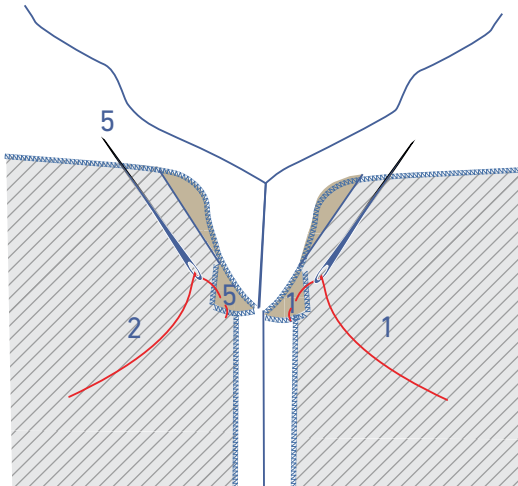


Thread the closed ends of the ties into the drawstring casing from the sides and out through the button holes in the CF. Pin the raw edges of the ties in place as shown.

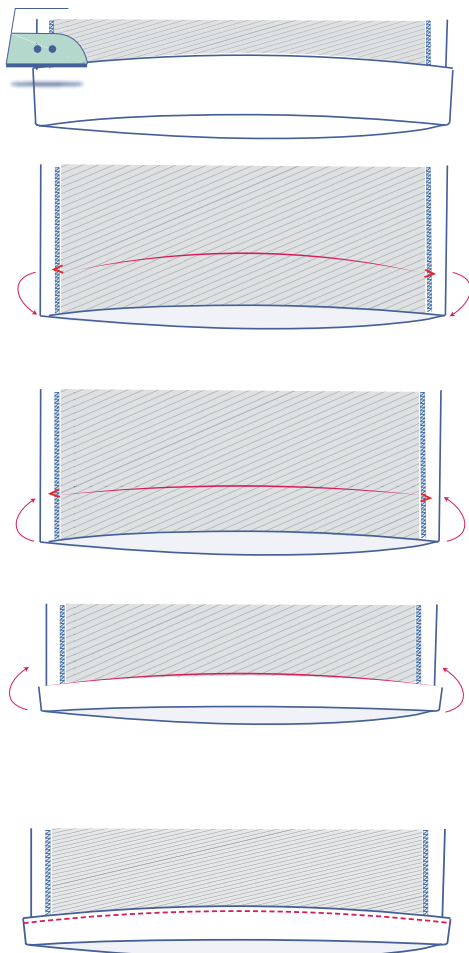




Sew the ties in place in the ditch of the vertical seam.



Hand stitch the skirt seam allowance and waist facing together to secure everything in place.



5

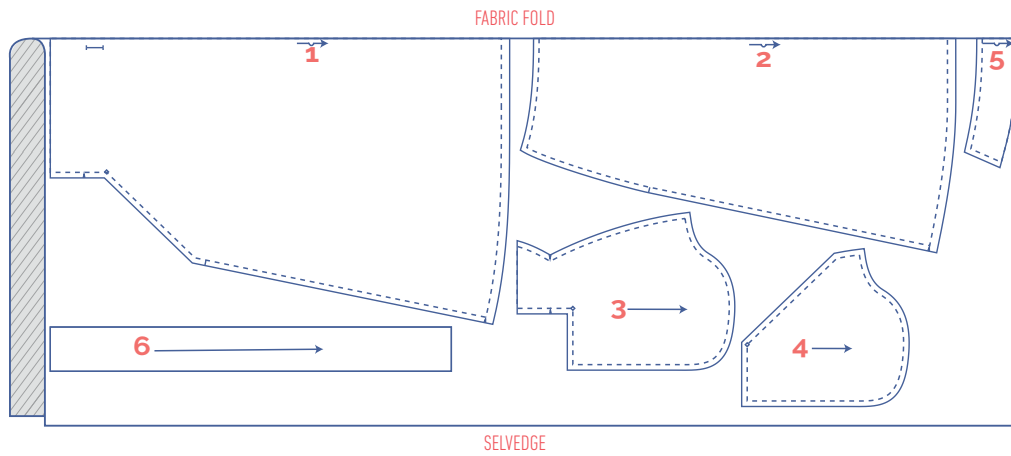
Press the hem allowance up to the V notches and then unfold.

Place the raw edge along the pressed crease and then fold once again.

Sew in place next to the edge.

fabric layout for fabrics 140 cm wide

for size XS - L



for size XL - XXXL

