

Cherry by Fibre ood

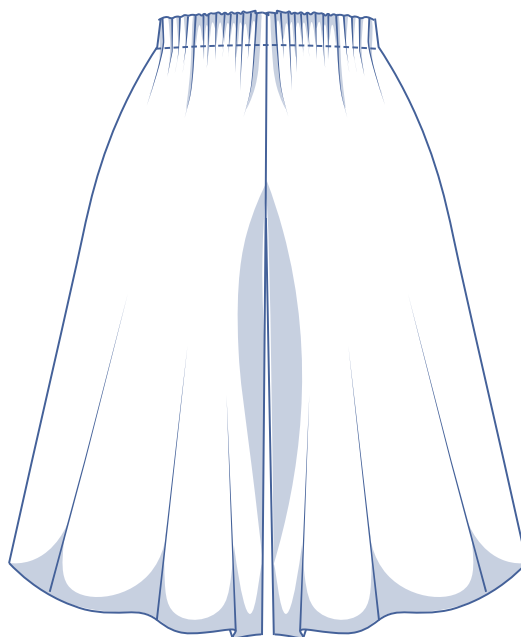
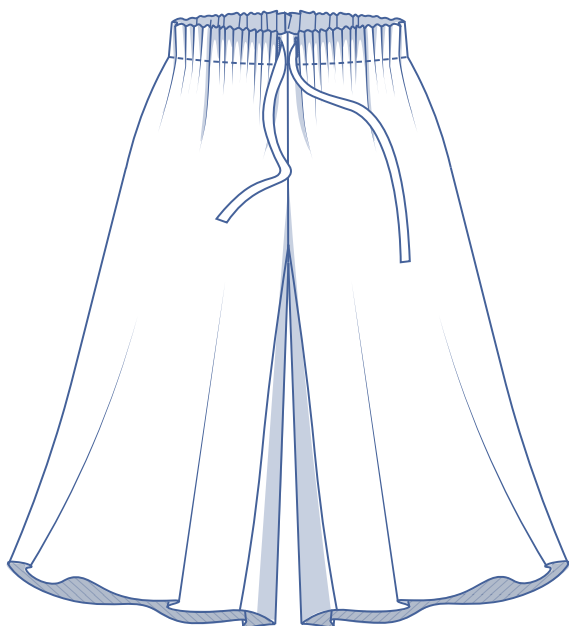
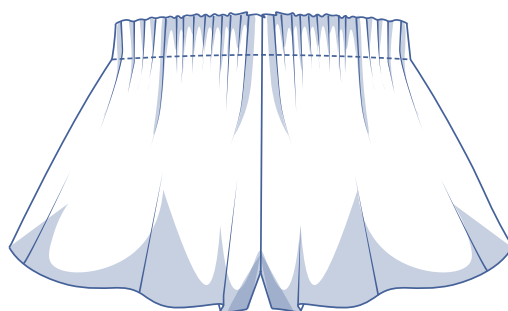
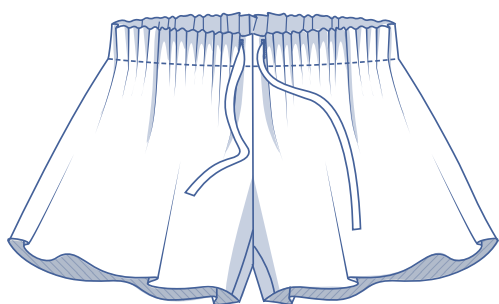


Cherry by Fibre ood



2 - 14 years

Ready for the sun and hours of fun playing in the sand?
Then the Cherry short for girls is the piece you are
looking for. With an elasticated waist and loose cut,
you have total comfort! The somewhat classier culottes
are perfect for an evening walk to your favourite
outdoor café for a delicious ice cream.

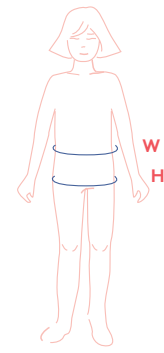


size chart

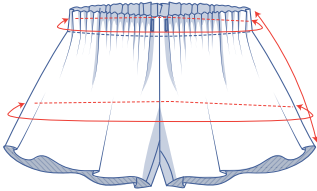
size (EU)	2	3	4	5	6	8	10	12	14
W (cm)	50	52	53	54	55	57	60	63	66
H (cm)	56	58	60	62	64	68	72	76	80

Waist (W): measure horizontally at the narrowest point of the body.

Hip (H): Measure horizontally at the widest point of the lower body.



finished garment measurements (in cm)



size	2	3	4	5	6	8	10	12	14
Side length (short)	22.75	23.75	24.75	25.75	26.75	28.75	30.75	32.75	34.75
Side length (culottes)	38.25	40.75	43.25	45.75	48.25	52	57	62	67.25
Waist without elastic	83.5	85.5	87	88.5	90	93	96.5	100	103.5
Waist with elastic	47	49	50	51	52	54	57	60	63
Hips	88.5	91	93	94.5	96.5	100	104.5	109	113.5

Compare the stated lengths to the measured or desired lengths. **Shorten** or **lengthen** the trouser legs and rise by cutting the pattern pieces at the indicated double lines and then spreading the pattern pieces out X cm from each other or overlapping them, where necessary. Make sure that the CF and CB lines and the side seams are always straight.



IMPORTANT

Adapt the amount of fabric based on these alterations.

supplies



- Thread
- Scrap of iron-on interfacing
- Elastic band: see table
- Ribbon or cord: see table (optional)
- Fabric: see table

elastic (in cm)	2	3	4	5	6	8	10	12	14
3.5 cm wide	50	52	53	54	55	57	60	63	66

Ribbon or cord (in cm)	2	3	4	5	6	8	10	12	14
	110	112	113	114	115	117	120	123	126

fabric used (in cm) F collection	2	3	4	5	6	8	10	12	14
green coloured crêpe tricot short, fabric width 140 cm	35	35	35	35	40	45	50	55	60
red or blue terrycloth short, fabric width 150 cm	35	35	35	35	40	40	40	45	55
rust coloured fabric culottes, fabric width 140 cm	50	50	55	70	85	95	105	120	140

Discover the Fibre Mood fabric collection and the accompanying fabric layouts [here](https://www.fibremood.com/en/fabrics) or on www.fibremood.com/en/fabrics.

fabric used (in cm) standard	2	3	4	5	6	8	10	12	14
shorts fabric width 140 cm	35	35	35	35	40	45	50	55	60
culottes fabric width 140 cm	50	50	55	70	85	95	105	120	140

The corresponding fabric layout can be found on the last page of these sewing instructions.

fabric advice

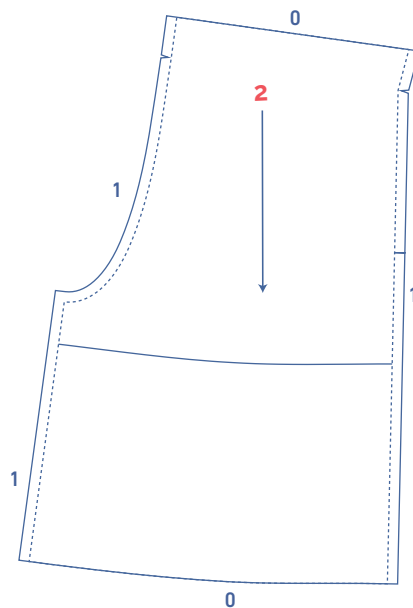
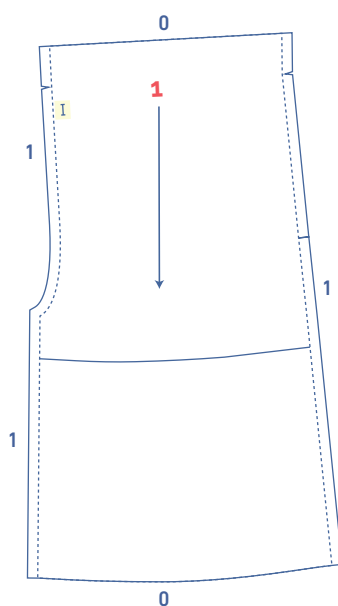


You can use a variety of fabrics for the Cherry shorts or culottes, from stretch to woven fabrics and from fabrics with drape to somewhat stiffer fabrics. Cotton, viscose, crêpe, terrycloth, linen, French Terry ... the possibilities are endless. Create a different look depending on which fabric you use. Discover the Fibre Mood fabric collection and the accompanying fabric plans [here](#) or on www.fibremood.com/en/fabrics.

pattern pieces & seam allowances (in cm)

To prepare the pattern before cutting you must first add the illustrated seam allowances around the paper pattern pieces as shown below.

1. front: 2x
2. back: 2x



IMPORTANT

The pieces highlighted in light yellow have iron-on interfacing attached to the wrong side.

IMPORTANT

We used a non-fray fabric and left the hem raw. If you go for a fabric that frays, be sure to include a hem allowance.

Before we begin sewing, make sure to transfer all markings onto your fabric:

- Mark the buttonholes (↔) with tacking thread (↪) by indicating the top and bottom with needle and thread.

Mark the following important points on the outline of the pattern:

- Nick the pattern paper and fabric at the places with a single vertical line (|).
- Cut a notch out of the fabric at the V symbol.

sewing instructions



The method used to hem the garment will depend on your chosen fabric. The pieces are always sewn together with right sides facing, unless stated otherwise.

FP front panel

BP back panel

RFP right front panel

LFP left front panel

CF centre front

CB centre back



right side



reverse side



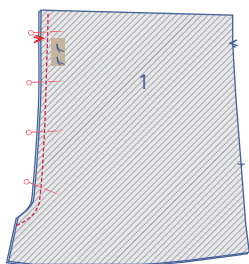
right side lining



iron on interfacing

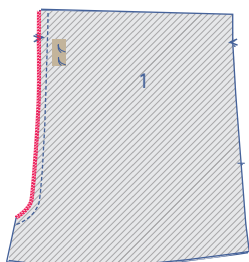


elastic

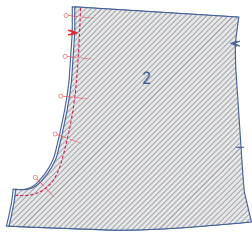


1

Pin and sew the CF seam of the F sections (1)

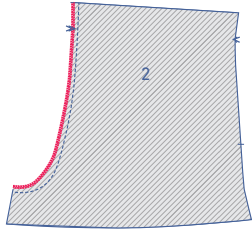


Finish the raw edges together using an overlock stitch.

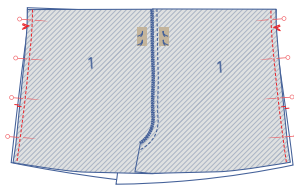


2

Pin and sew the CB seams of the B sections (2).

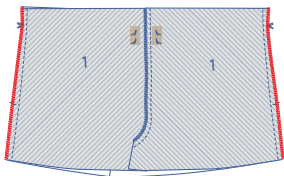
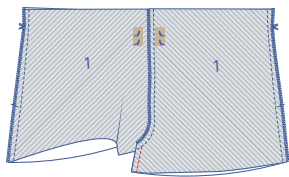


Finish the raw edges together using an overlock stitch.

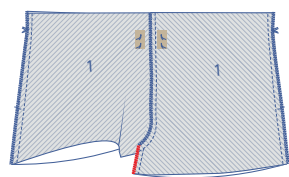


3

Pin and sew the side and inside leg seams.

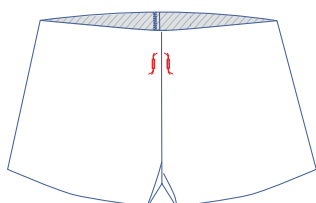


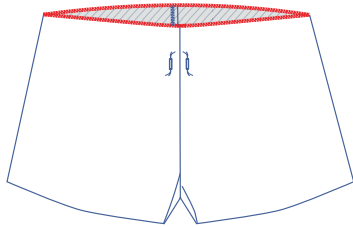
Finish the raw edges together using an overlock stitch.



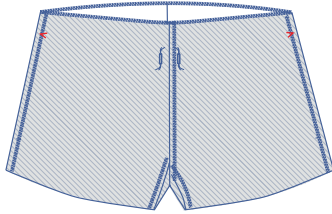
4

Create the vertical buttonholes on the indicated markings.

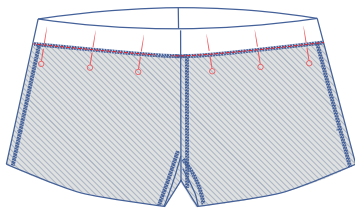
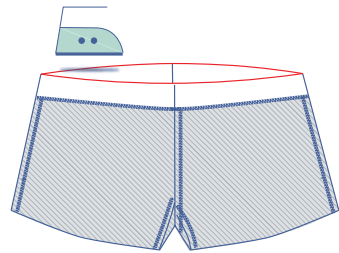




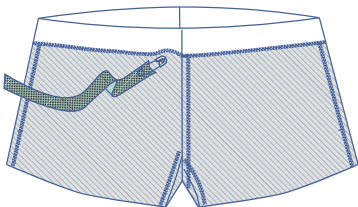
Finish the indicated side of the extended waist facing with an overlock stitch.



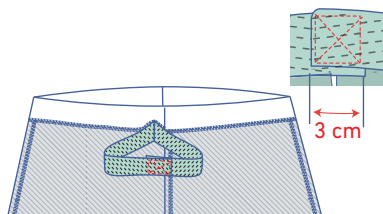
Iron the extended waist facing to the wrong side at the V nicks.



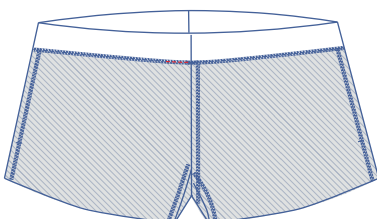
Pin and sew the facing to create the casing but leave an opening of several cm so you can thread the elastic through later on.



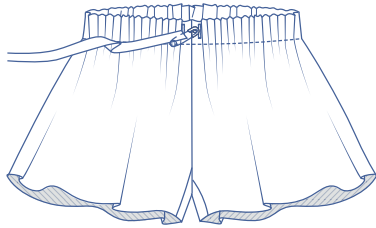
Thread the elastic through the casing.



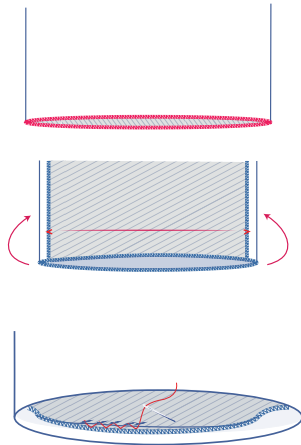
Allow 3 cm of the ends to overlap and sew into place using an X shape.



Pull the elastic through the casing completely and sew the opening closed.



Thread the ribbon or cord through the casing.



5

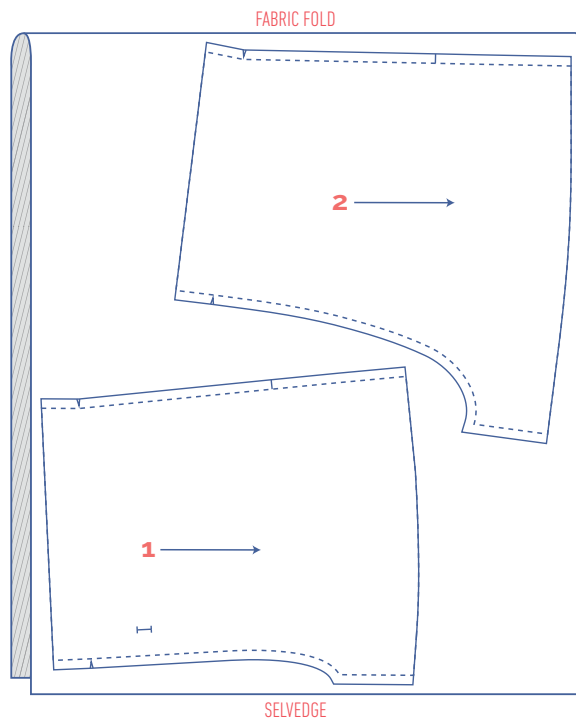
We used a fabric that doesn't fray so the hem does not need finishing.

If you use a fabric that frays, stitch or sew a hem allowance.

fabric layout for fabrics 140 cm wide

shorts

size 2 - 14y



culottes

size 2 - 14y

