

Arlette pattern hack by Fibre ⚡ood



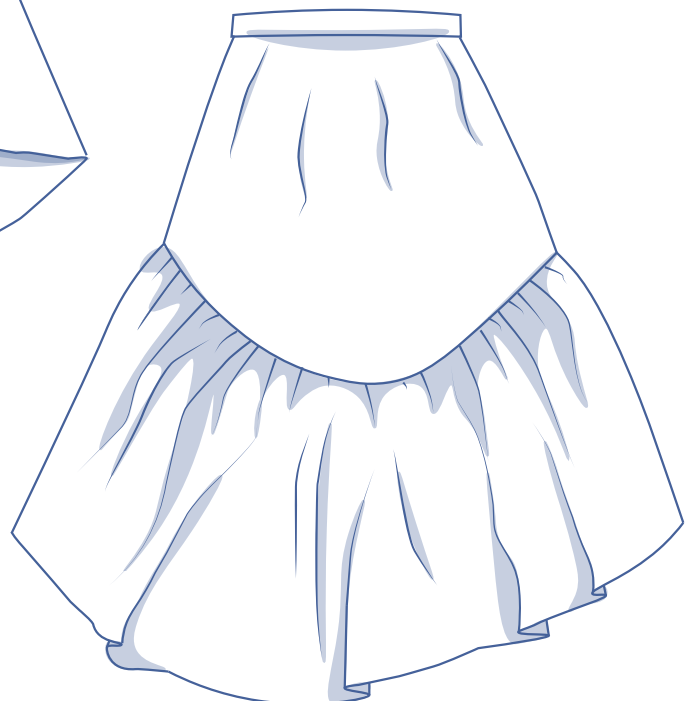
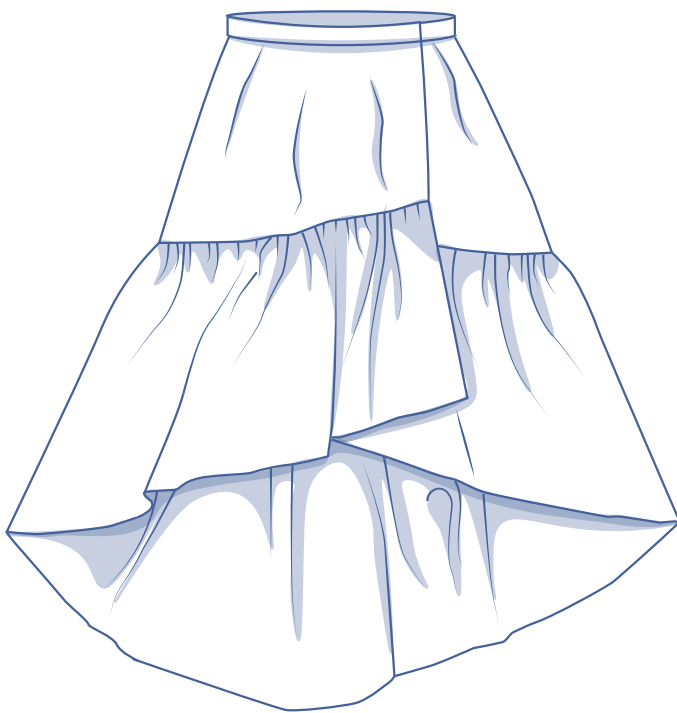
Arlette pattern hack by Fibre ⚡ood



32 - 58

Our Arlette skirt from the Spring issue was such a success that we decided to add a fresh new option to alter the pattern for you!

Here you will find a simple way to make the wrap skirt with larger flounces or ruffles. Pair it with a cropped boxy top and sandals and you're ready for the sultry days of Summer ahead.

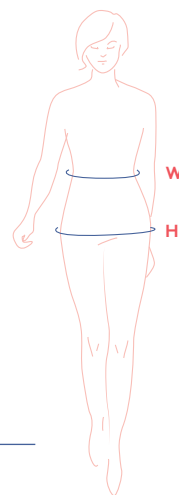


size chart

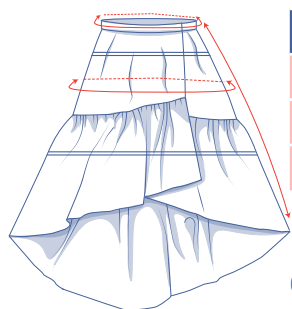
size (EU)	32	34	36	38	40	42	44	46	48	50	52	54	56	58
UK	4	6	8	10	12	14	16	18	20	22	24	26	28	30
US	0	2	4	6	8	10	12	14	16	18	20	22	24	26
W (cm)	66	68	70	74	78	82	84	88	94.5	101	107.5	114	120.5	127
H (cm)	86	90	94	97	100	103	106	109	115	120	125	130	135	140

Waist (W): measure horizontally at the narrowest point of the body.

Hip (H): measure horizontally at the widest point of the lower body.



finished garment measurements(in cm)



size	32	34	36	38	40	42	44	46	48	50	52	54	56	58
side length	85.25	85.25	85.25	85.25	85.25	85.25	87.25	87.25	89.25	89.25	89.25	89.25	89.25	89.25
waistline	72	74	76	80	84	88	90	94	100.5	107	113.5	120	126.5	133
hips	105.5	107.5	109.5	113.5	117	121	123	127	133.5	140	146.5	153	159	165.5

Compare the stated lengths to the measured or desired lengths. **Lengthen** or **shorten** the skirt by cutting the pattern pieces at the indicated double lines and then spreading the pattern pieces out X cm from each other or overlapping them, where necessary. Make sure that the CF and CB lines and the side seams are always straight.



IMPORTANT

Adapt the use of fabric based on these alterations.

supplies



- Thread
- Iron-on interfacing: max. 20 cm
- Snap (Ø 2 cm): 2
- Fabric: see table

fabric used (in cm) F collection	32	34	36	38	40	42	44	46	48	50	52	54	56	58
blue fabric fabric width 140	235	240	240	245	250	255	260	265	275	285	295	305	315	320

Discover the Fibre Mood fabric collection and the accompanying fabric layouts [here](https://www.fibre mood.com/en/fabrics) or on www.fibre mood.com/en/fabrics.

fabric used (in cm) standard	32	34	36	38	40	42	44	46	48	50	52	54	56	58
fabric width 140 cm	235	240	240	245	250	255	260	265	275	285	295	305	315	320

The corresponding fabric plan can be found on the last page of these sewing instructions.

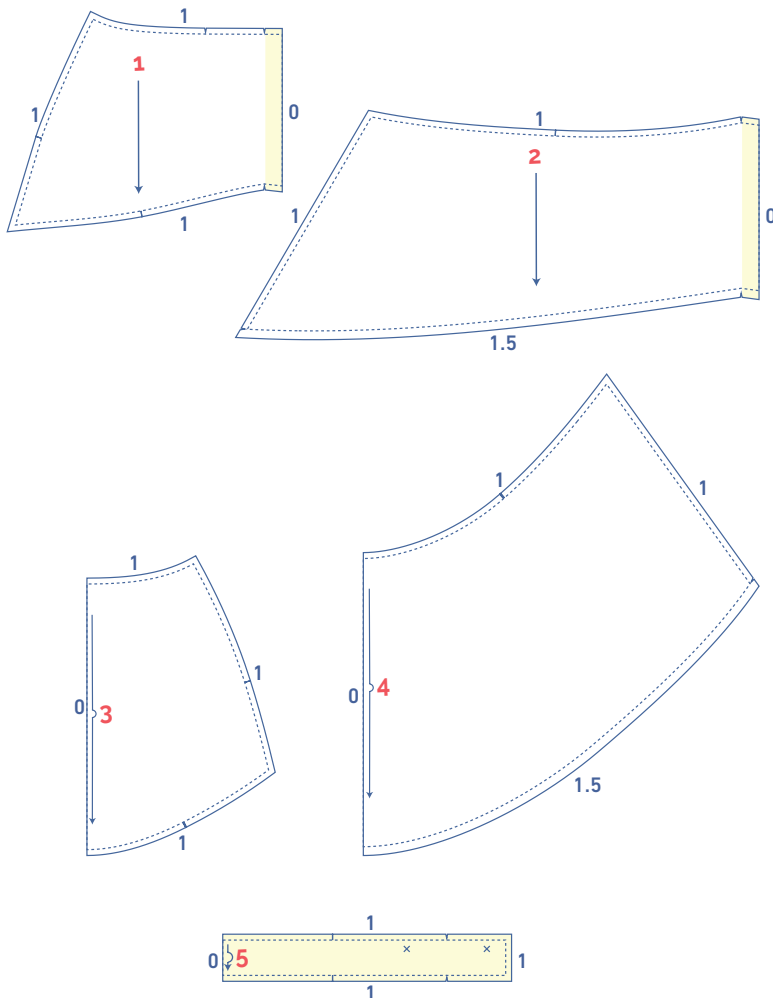
fabric advice



Opt for a fabric with drape and movement such as viscose (crepe) or polyester-crepe in a ditsy floral, leopard or a sweet pastel shade. Fabrics with more body such as cotton, denim or linen also work nicely here, but will add a more dramatic effect. All the information about the Fibre Mood fabric collection can be found on www.fibre mood.com/en/fabrics.

pattern pieces & seam allowances (in cm)

To prepare the pattern before cutting you must first add the illustrated seam allowances around the paper pattern pieces as shown below.



1. top front: 2x
2. skirt front: 2x
3. top back: 1x on fabric fold
4. skirt back: 1x on fabric fold
5. waistband: 1x on fabric fold

IMPORTANT

The pieces highlighted in light yellow are attached along the wrong side using iron-on interfacing.

Mark the following important points on the pattern:

- Mark the position of the snaps by sewing through the centre of the (X) by hand.

Mark the following important points on the outline of the pattern:

- Snip the pattern paper and fabric at the places where a single vertical line (I) and double vertical lines (II) are indicated.
- Cut a small corner out of the fabric where a V notch or at the finished hemline.
- Cut a small corner (V notch) out of the pieces that lie on the fabric fold to mark the middle of these pieces.

sewing instructions



The method used to finish sewing the garment seams depends on the fabric used. The pieces are always sewn together with right sides facing, unless stated otherwise.

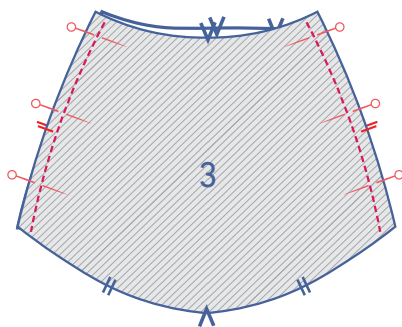
F front

B back

 right side

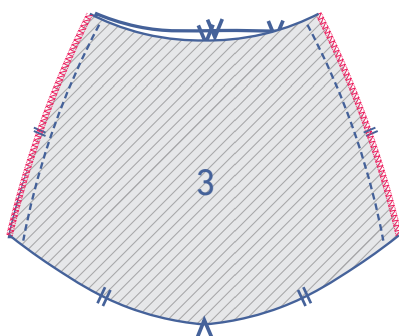
 wrong side

 iron-on interfacing

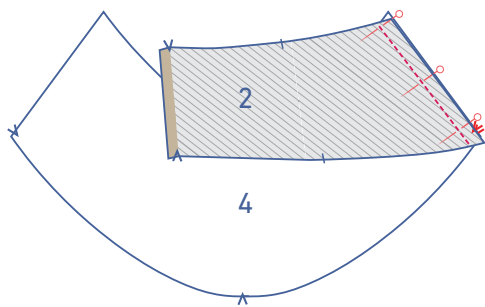


1

Pin and sew the side seams of the top front (1) to the top back (3).

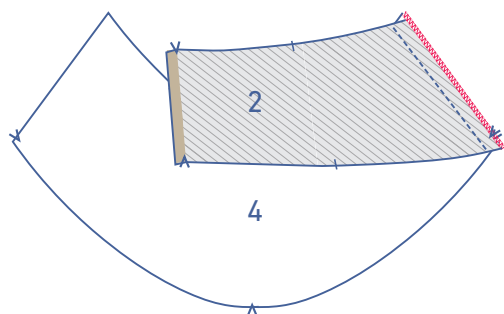


Finish the raw edges together using an overlock stitch.

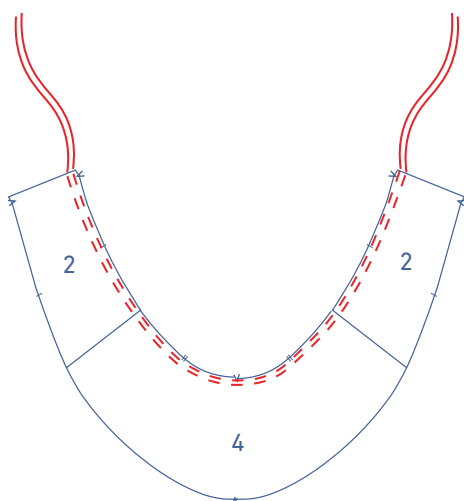


2

Pin and sew the side seams of the skirt front (2) and skirt back (4).

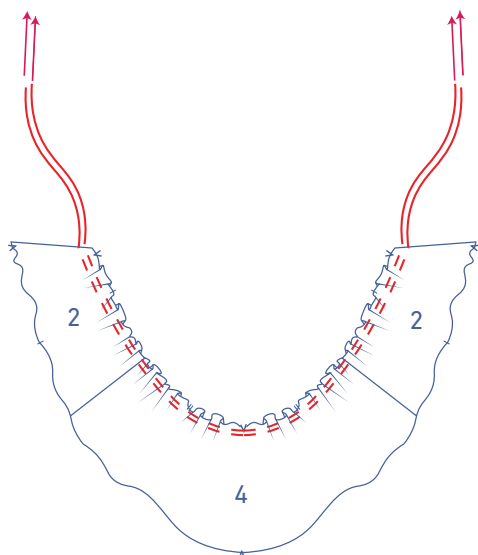


Finish the raw edges together using an overlock stitch.

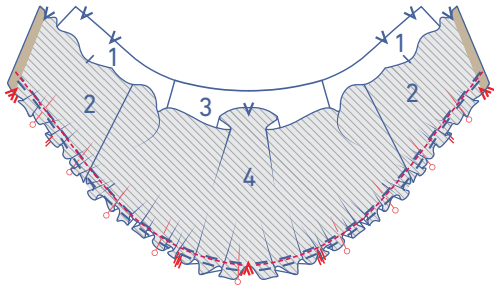


3

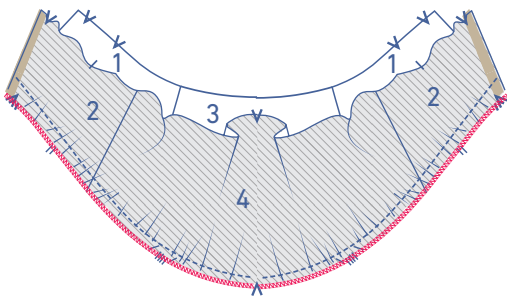
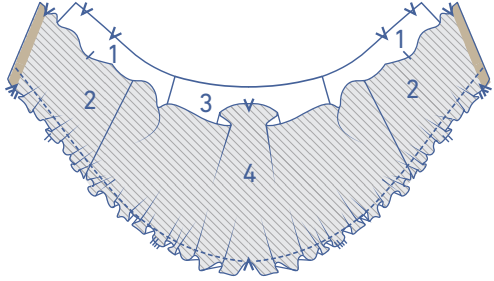
Use a length to basting stitch two parallel lines of stitching along the top of the skirt piece, without backstitching. Leave the thread tails long enough to hold onto.



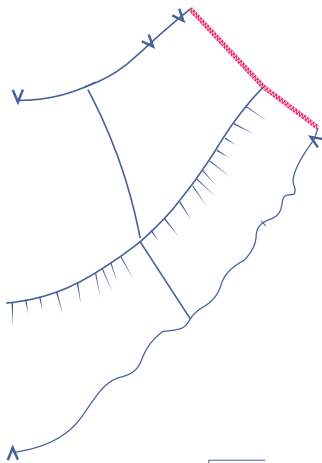
Carefully pull the ends of the threads to gather the fabric into ruffles.



Distribute the gathered fabric evenly until the top of the skirt piece lines up with the bottom of the skirt's top piece. Match the corresponding snips, pin together and sew in place. Remove the basting threads.

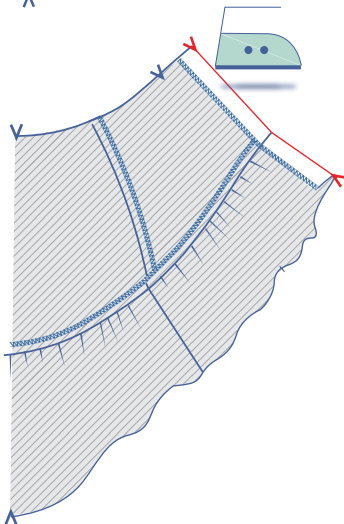


Finish the raw edges together using an overlock stitch.



4

Finish the vertical edge of the shaped facing using an overlock stitch.



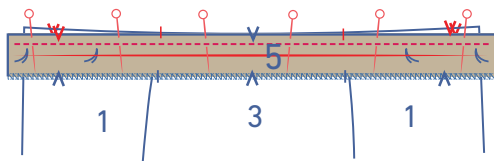
Press the shaped facing at the V notches towards the wrong side.



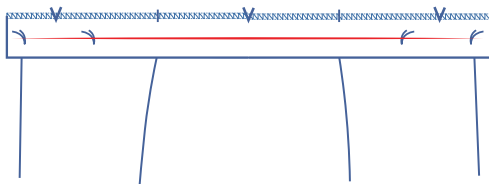
Finish the indicated side of the waistband (5) using an overlock stitch.



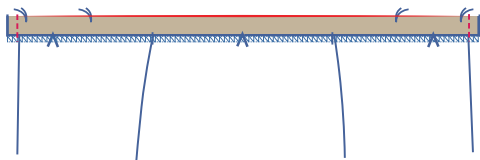
Press the waistband in half lengthwise to create a fold line. Open back outwards.



Pin the raw edge of the waistband to the waistline along the right side of the skirt with the snips matched perfectly. There should be 1 cm of seam allowance remaining on both sides. Sew in place.



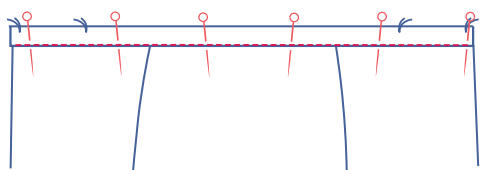
First, fold the waistband up and away from the skirt.



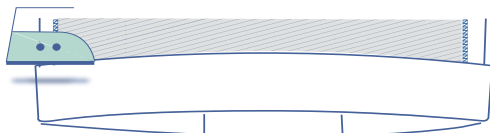
Fold the waistband in half lengthwise along the fold line with the right side facing inwards and sew the 2 short ends.



Turn the waistband back right side out.

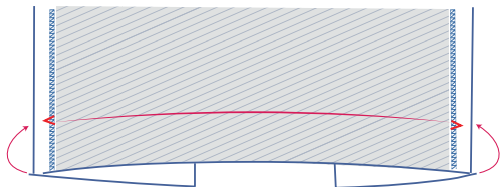


Pin the waistband in place along the right side of the skirt and stitch in place, 'in the ditch'.

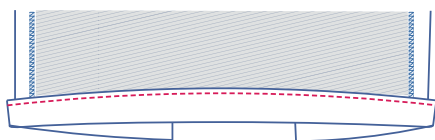
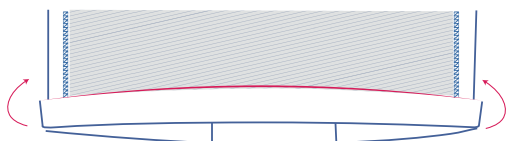


6

Press the hem allowance (= 1.5 cm) up to the V notches and then unfold.



Fold the raw edge to the pressed fold line and then fold again.



Sew in place right next to the edge.



7

Sew the snaps on at the designated places.

fabric plan
 for standard fabrics 140 cm wide

32 - 58

