

# Victoria by Fibre ƛood



# Victoria by Fibre Mood



32 - 54

Don't be afraid to take the leap and dress up with the Victoria top, a romantic vision of Victorian fashion. This top is an absolute must, with its long sleeves and a ruffle collar.

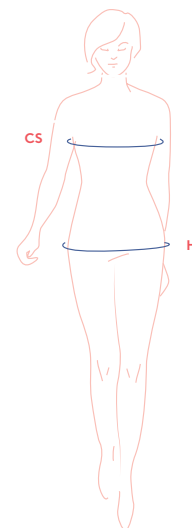


## size chart

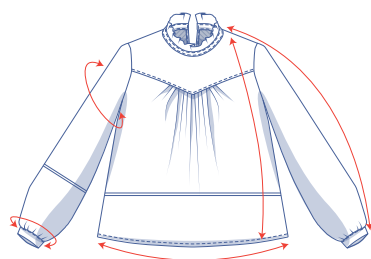
size (EU)	32	34	36	38	40	42	44	46	48	50	52	54
UK	4	6	8	10	12	14	16	18	20	22	24	26
US	0	2	4	6	8	10	12	14	16	18	20	22
CS (cm)	76	80	84	88	92	96	100	104	110	116	122	128
H (cm)	86	90	94	97	100	103	106	109	115	120	125	130

**Chest (CS):** measure horizontally around the fullest part of the chest.

**Hip (H):** measure horizontally around the widest part of the lower body.



## measurements (in cm)



size	32	34	36	38	40	42	44	46	48	50	52	54
length	60.25	60.75	62.25	62.75	64.25	65	66.5	67	70.25	71	73.25	74
sleeve length*	69.25	69.75	70.5	71	71.5	72.25	72.75	73.5	74.25	74.75	75.5	76.25
1/2 bust**	40,25	42,25	44,25	46,25	48,25	50,5	52,5	54,5	57,5	60,5	63,5	66,5
1/2 hem circumference	51.5	53.5	55.5	57.5	59.5	61.5	63.5	65.5	71.5	74.5	77.75	80.75
upper arm circumference	30	31	32	33,25	34,25	35,5	36,5	37,5	40,25	41,75	43,25	44,75
cuff circumference	22	22.5	23	23.5	24	24.5	25	25.5	26	26.5	27	27.5

\* Includes the shoulder length.

\*\* Measured along the back.

Compare the stated lengths to the measured or desired lengths. **Lengthen** or **shorten** the top and/or the sleeves by cutting the pattern pieces at the indicated double lines and then spreading the pattern pieces out X cm from each other or overlapping them where needed. Make sure that the CF and CB lines and the side seams are always straight.



## IMPORTANT

Adapt the use of fabric based on these alterations.

## supplies



- Thread
- Iron-on interfacing: 25 cm
- Hook-and-eye closure: 2
- Snap (Ø 0.8 cm): 1
- Fabric: see table

fabric used (in cm) F collection	32	34	36	38	40	42	44	46	48	50	52	54
white fabric with motif fabric width 140 cm	135	140	140	145	145	150	150	160	195	195	200	200

Comprehensive information about the fabrics in the Fibre Mood collection along with the accompanying fabric plans can be found [here](https://www.fibre mood.com/en/fabrics) or on [www.fibre mood.com/en/fabrics](https://www.fibre mood.com/en/fabrics).

fabric used (in cm)	32	34	36	38	40	42	44	46	48	50	52	54
standard fabric fabric width 140 cm	135	140	140	145	145	150	150	160	195	195	200	200

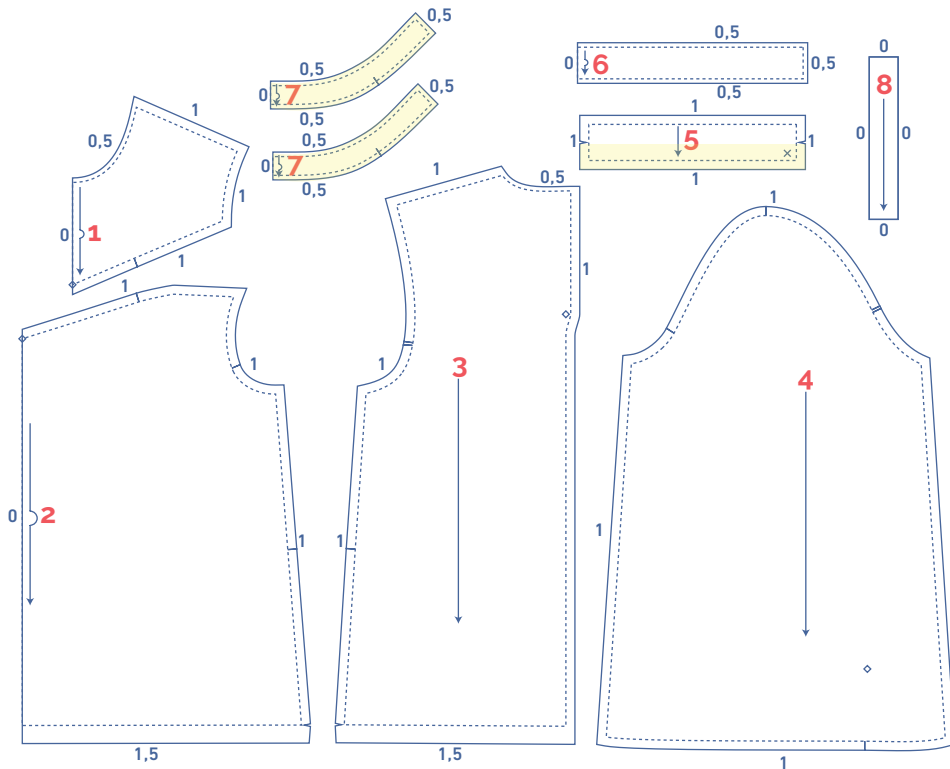
The corresponding fabric plan can be found on the last page.

**fabric advice** Embroidered fabric (= whitework embroidered fabric in cotton or cotton-polyester mix) is the perfect complement to the Victoria top. The gentle, airy and natural look of this fabric matches the top's romantic style exquisitely. You could also go for a cotton solid or a viscose fabric in a light, bright colour or combine one of these fabrics with lace. Comprehensive information about the fabrics in the Fibre Mood collection can be found [here](https://www.fibre mood.com/en/fabrics) or on [www.fibre mood.com/en/fabrics](https://www.fibre mood.com/en/fabrics).



## pattern pieces & seam allowances (in cm)

To sew the garment as described in the instructions, you must draw the illustrated seam allowances around the paper pattern pieces before cutting them out.



1. top front: 1x on fabric fold
2. front: 1x on fabric fold
3. back: 2x
4. sleeve: 2x
5. wrist trim: 2x
6. collar: 1x on fabric fold
7. collar band: 2x on fabric fold
8. bias arm split: 2x

**IMPORTANT**

The pieces highlighted in light yellow have iron-on interfacing attached to the wrong side.

Indicate crucial points on the outline of the pattern:

- Nick the pattern paper and fabric at the places where a single vertical line (I) and double vertical lines (II) are indicated.
- Cut a small corner out of the fabric where a V notch or at the finished hemline.
- Cut a small corner (V notch) out of the pieces that lie on the fabric fold to mark the middle of these pieces.

Mark crucial points on the pattern piece using needle and thread.

- Mark the tip of the V, where the tip of the arm slit intersects with the tip of the neck slit marking the centre of the (◇).
- Mark the centre of the (X).

# sewing instructions



The method used to finish sewing the garment depends on the fabric used.

The pieces are always sewn together with the right sides of the fabric matching exactly, unless stated otherwise.

F front

B back



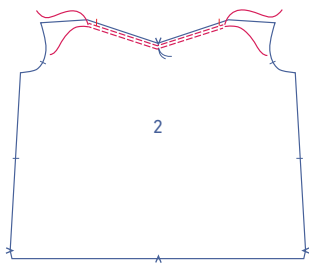
right side



wrong side

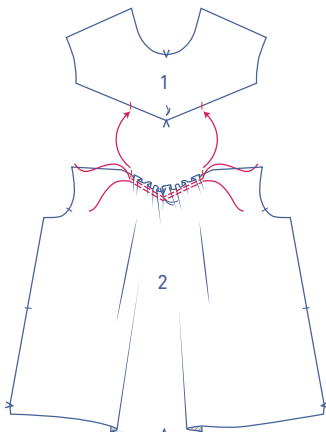


iron-on interfacing



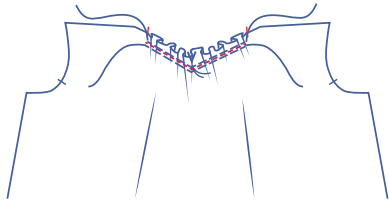
**1**

Use a long stitch at a low thread tension to sew 2 parallel lines of stitching at the top side of the front (2) on the left and right sides of the V notch until just before the nick.

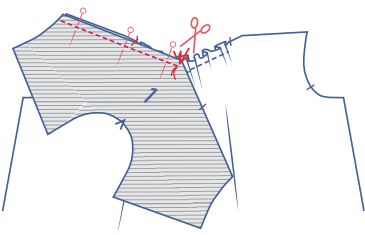
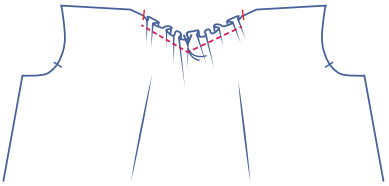


Carefully tug the ends of the threads to gather the fabric into ruffles.

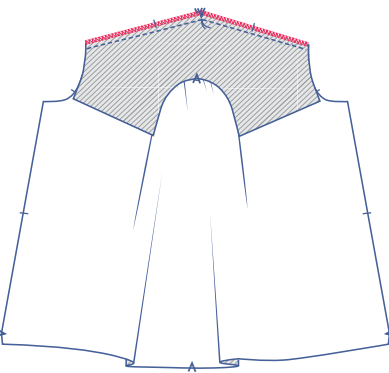
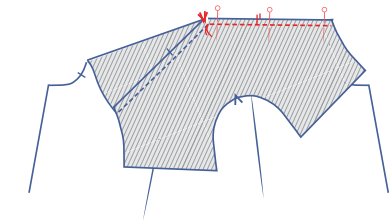
Distribute the gathered fabric (ruffles) until the nicks of the front line up with the front top nicks (1).



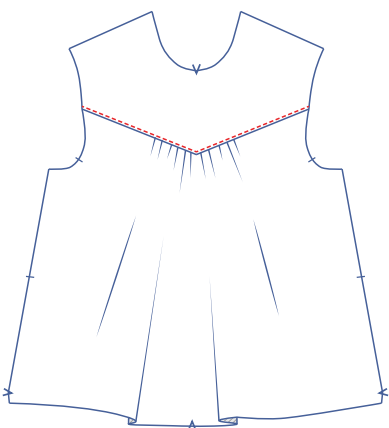
Sew the ruffles in place between the two gathering threads. Then remove the gathering threads.



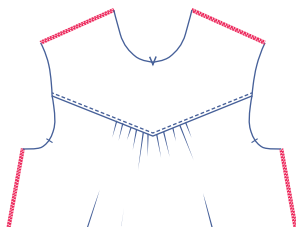
Pin the bottom of the top front to the top of the front. Sew together up to the basting thread. Allow the needle to remain in the fabric, lift the presser foot, and snip into the seam allowance of the front (2) (= the bottom-most layer). Turn the work piece so that the other side of the top front can be placed onto the other side of the front. Allow the presser foot to descend and sew in place.



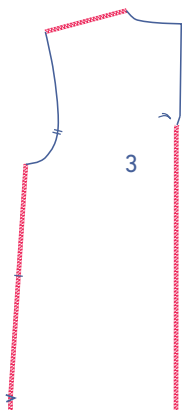
Finish the raw edges together using an overlock stitch. Press the seam allowance to the top.



Top stitch 2 mm away from the seam to the top front.

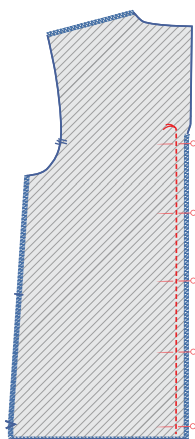


Finish the side and shoulder seams using an overlock stitch.

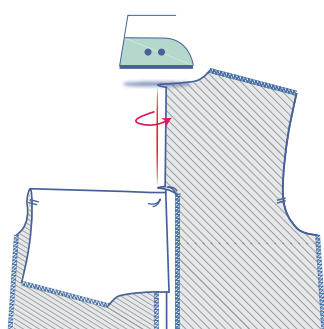


## 2

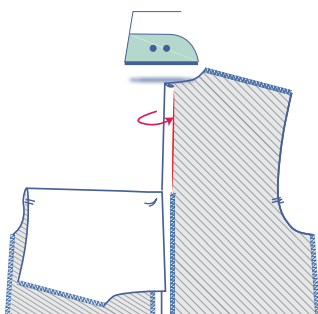
Finish the side, shoulder and CB seams (up to the basting thread) of the back (3) using an overlock stitch.

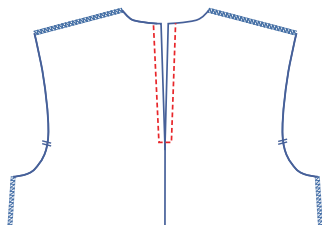


Pin and sew both pieces together, from the hem up to the basting thread. Press the seam allowance open.

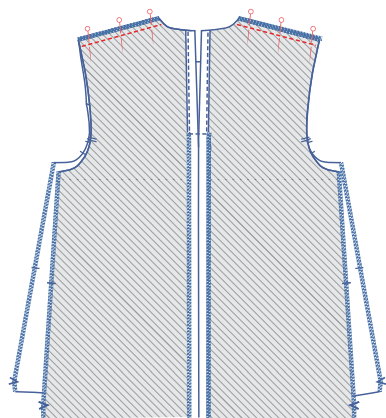


Alternate in pressing each of the sides above the basting thread.





Sew together at .5 cm from the edge. Sew in a U shape (at right angles).



### 3

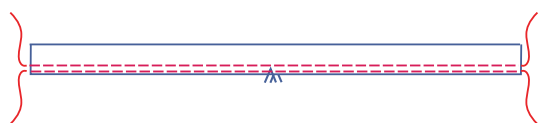
Pin and sew the shoulder seams. Press the seam allowance open.



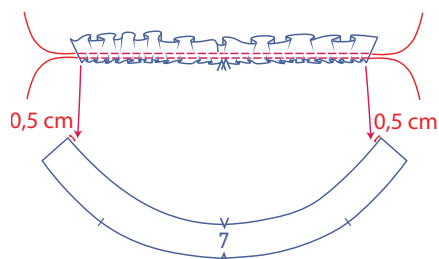
### 4

Fold the collar (6) in half lengthwise with the right side of the fabric turned inward.

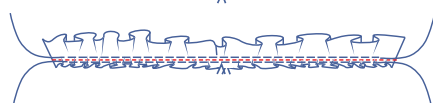
Sew the short sides at 0.5 cm from the edge and then turn inside out.



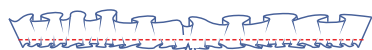
Use a long stitch at a low thread tension to sew 2 parallel lines of stitching along the bottom of the collar.



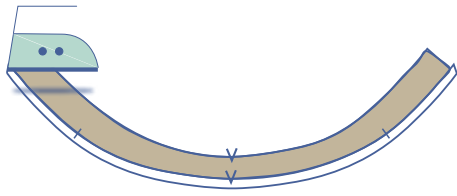
Carefully tug the ends of the gathering threads to gather the fabric into ruffles. The V notches on the collar and collar band (7) should line up perfectly and the finished sides of the collar must be at 0.5 cm from the edge of the collar band.



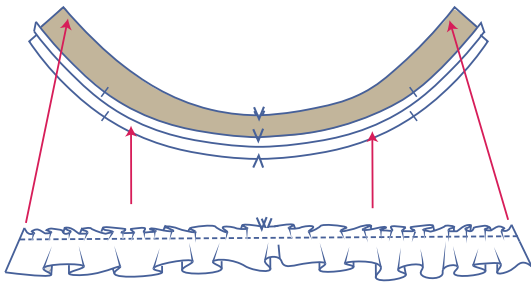
Sew the ruffles in place. Then remove the gathering threads.





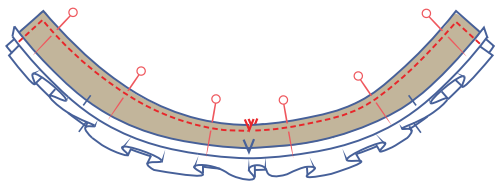


Press the seam allowance of one of the two collar bands (7) at the bottom over to the wrong side.

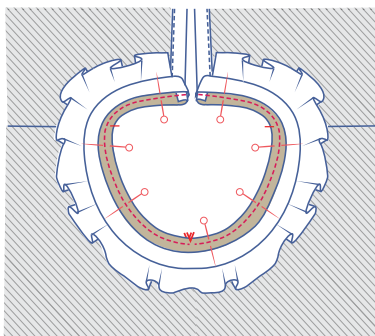


Stack the collar bands with the right sides and nicks matching exactly.

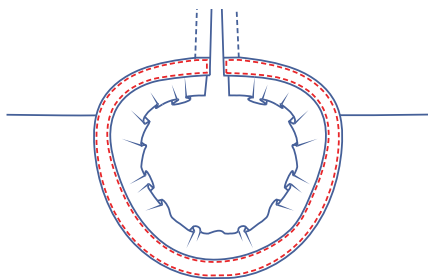
Slide the collar between with the raw edges toward the top. The finished edges of the collar should be 0.5 cm from the edge of the collar band.



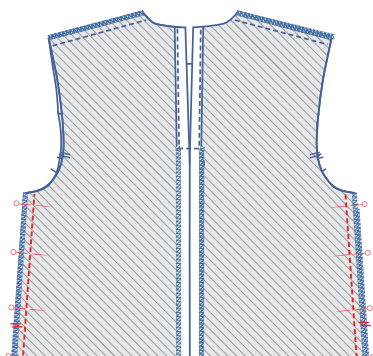
Pin and sew the edges together at 0.5 cm. Turn inside out.



Pin and sew the bottom of the collar band that has not been pressed to the neckline along the inside (= the wrong side) of the work piece.

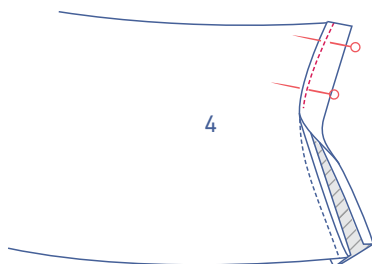
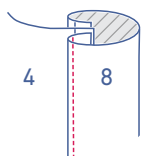
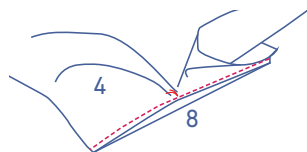
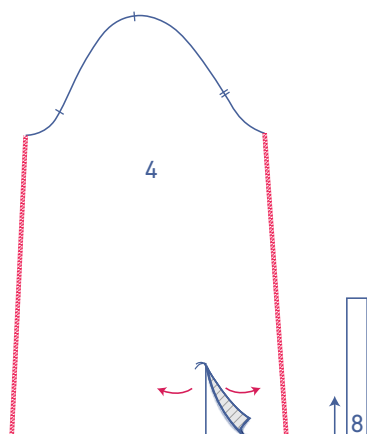
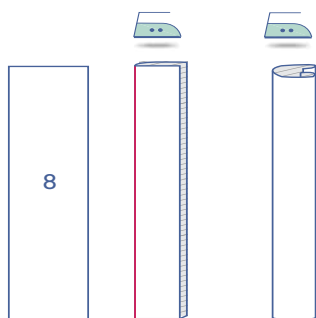
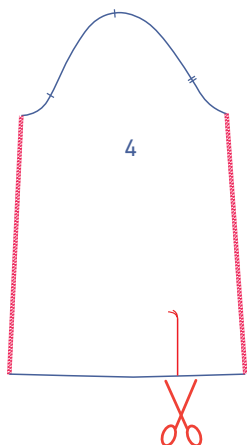


Fold the collar and the collar band over to the neckline at the right side of the work piece and place the fold line of the pressed over collar band directly on the seam. Pin and sew the collar band in place. Finish the stitching around the collar band.



## 5

Pin and sew the side seams of the front and back. Press the seam allowance open.



## 6

Finish the sides of the sleeve (4) using an overlock stitch.

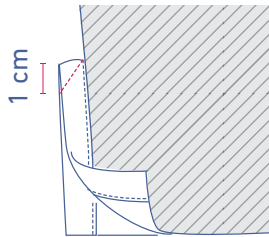
Cut the sleeve on the indicated line up to the basting thread.

Press the bias arm split (8) as follows: first press in half and then open back up. Next press both long sides double (= to the centre-most fold line).

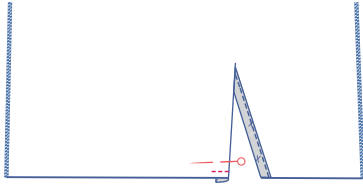
Open the sleeve split so that you end up with a single straight line.

Slide the bias arm split under the sleeve with the right side facing up. Match a long edge to the edge of the arm slit and pull the sleeve a bit to the side at the basting thread. Sew into place at 0.5 cm. Only a few fabric threads have been sewn in place at the basting thread.

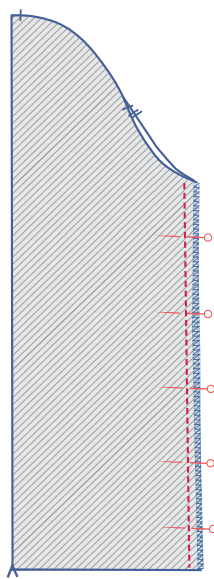
Fold the bias toward the right side of the sleeve and place the pressed fold line directly on the stitching. Sew in place right next to the edge.



Fold the sleeve in half crosswise, with the right side facing in. Sew the top of the bias together at an angle.



Fold the bias at the front of the sleeve back toward the wrong side of the sleeve and sew in place. Note: the side of the sleeve that is widest next to the slit is the front of the sleeve.



Pin and sew the sleeve sides. Press the seam allowance open everywhere.



Press the long side of the wrist trim (at the basting threads) 1 cm.

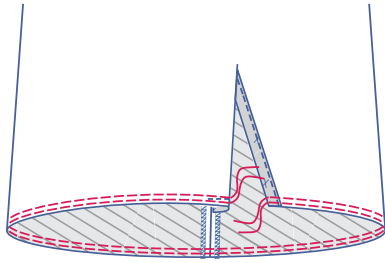


Fold the wrist trim in half lengthwise to where the V notches are located with the right side of the fabric faced inwards. Sew the short sides.

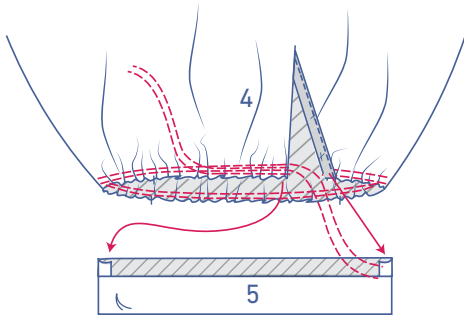


Turn inside out.

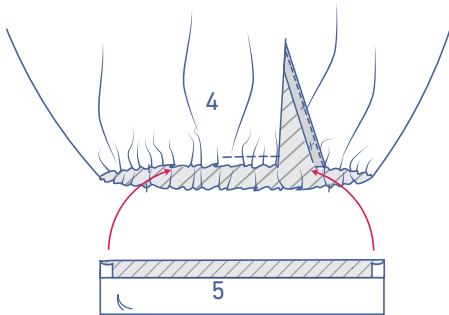




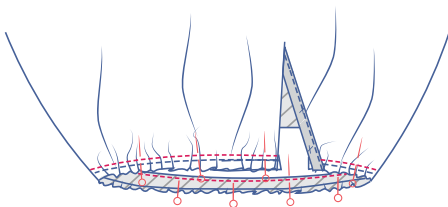
Use a long stitch with a low thread tension to sew 2 parallel lines of stitching along the bottom of the sleeve.



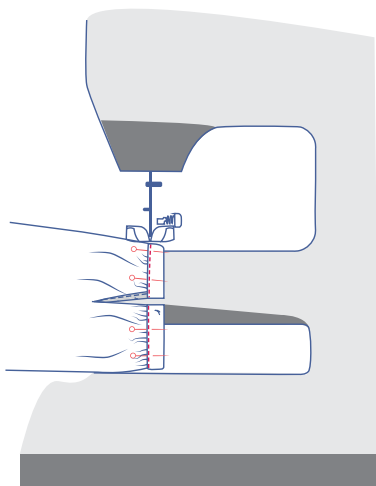
Carefully tug the ends of the gathering threads to gather the fabric into ruffles.  
The bottom of the sleeve must be aligned with the wrist trim (5).



Pin the raw edge of the wrist trim that has not been pressed to the bottom of the sleeve along the wrong side of the sleeve.

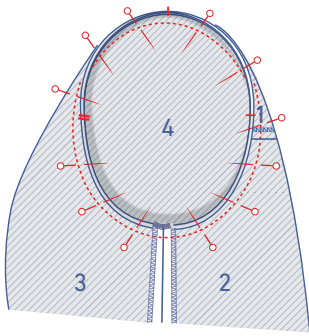


Distribute the ruffles evenly and sew them in place between the gathering threads.  
Next remove the gathering threads.

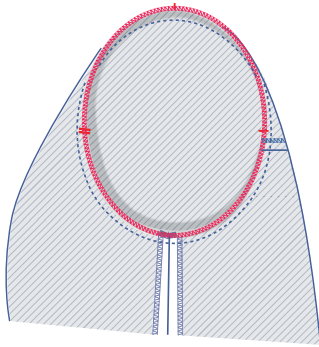


Turn the wrist trim over to the right side of the sleeve. Lay the fold line directly onto the stitching. Sew in place right next to the edge.

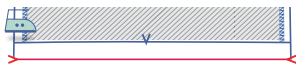
Sew the snap on.



Pin the sleeve cap to the armhole, matching the corresponding nicks. The single sleeve nick matches the single front nick, the double sleeve nick lines up with the double nick on the back. The top single sleeve nick matches the shoulder. Distribute the 'excess' fabric between the nicks. Sew in place.

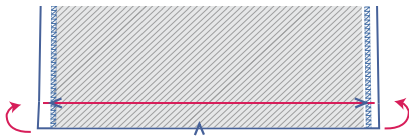


Finish the raw edges together using an overlock stitch.

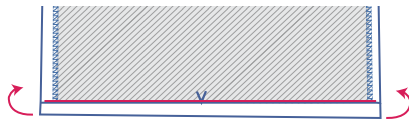


## 7

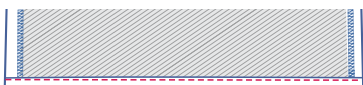
Press the hem 1.5 cm over to the V notches.



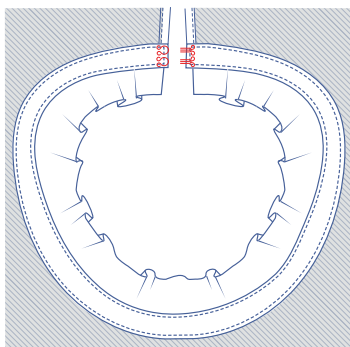
Fold the hem allowance back down.



Place the raw edge along the pressed fold line and then fold once again.



Sew in place next to the edge.

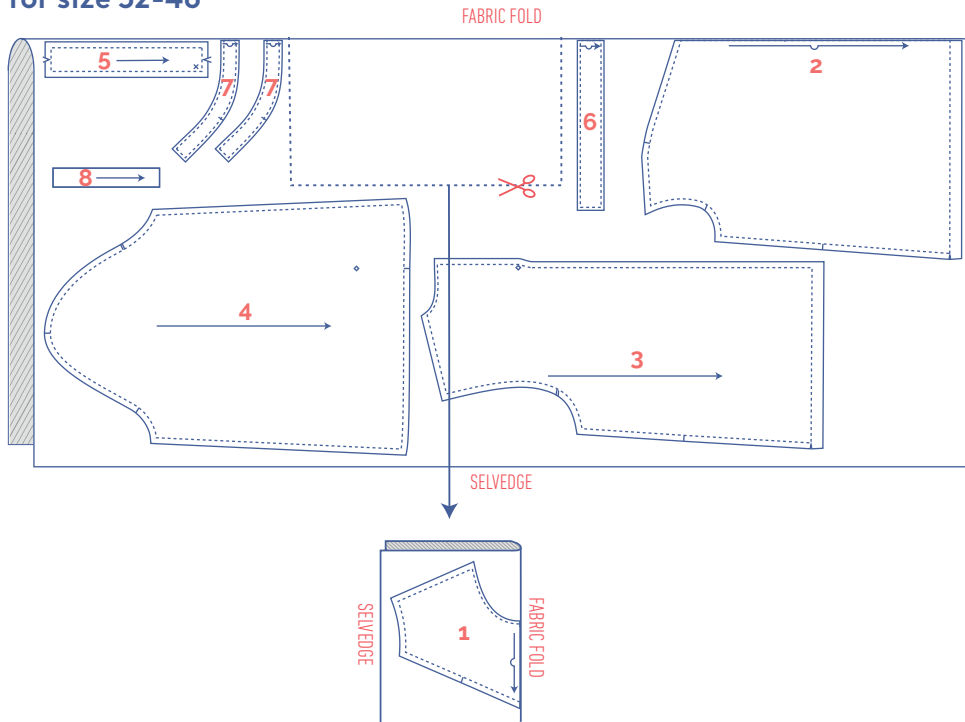


## 8

Sew on the hook-and-eye closure at the place indicated to finish the garment.

# fabric plan for fabric 140 cm wide

for size 32-46



for size 48-54

