

## Mira by Fibre ⚡ood



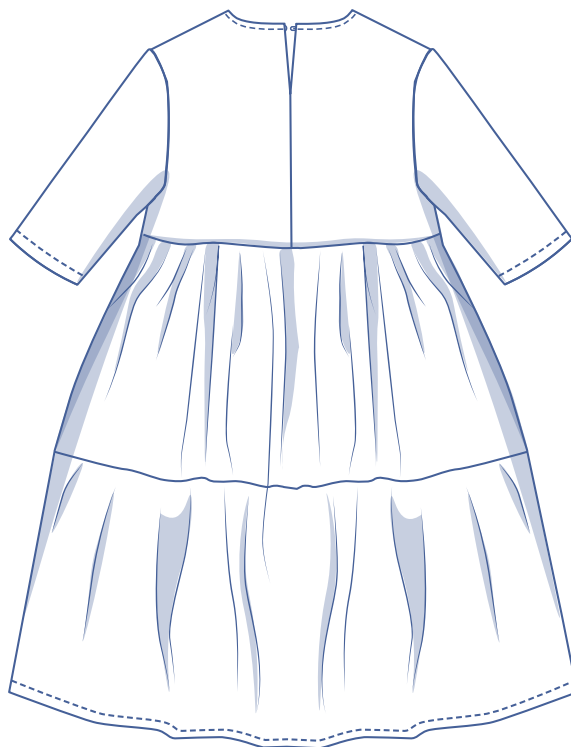
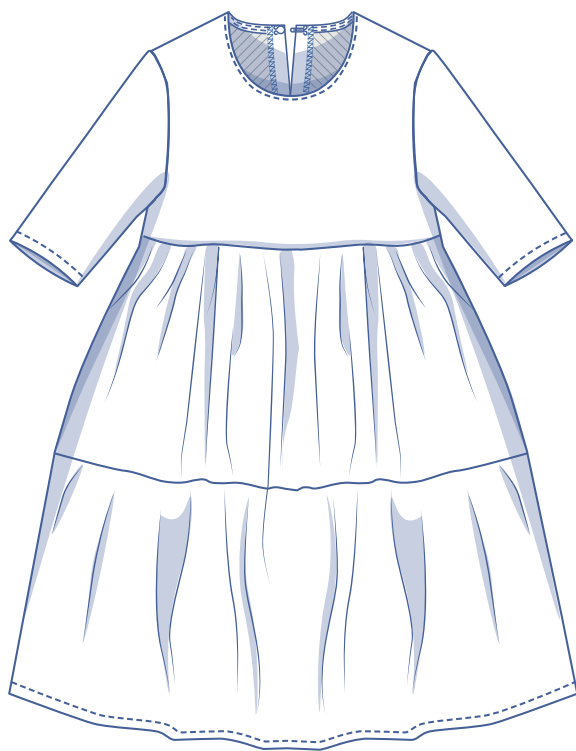
# Mira by Fibre ood

\*\*\*



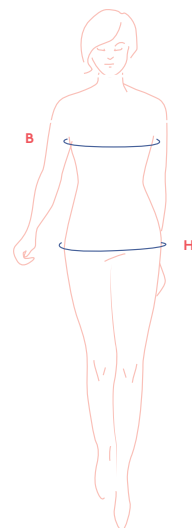
32 - 58

Mira is a hip little, loose-cut A-line summer dress. Interested in something a little more form-fitting? Make the bands slightly narrower so that there's less fabric to ruffle. Do you dream about romantic dresses? Try sewing decorative ribbons between the seams. Or go for a longer version using our [no-hassle technique for lengthening patterns](#).



## size chart

size (EU)	32	34	36	38	40	42	44	46	48	50	52	54	56	58
UK	4	6	8	10	12	14	16	18	20	22	24	26	28	30
US	0	2	4	6	8	10	12	14	16	18	20	22	24	26
B (cm)	76	80	84	88	92	96	100	104	110	116	122	128	134	140
H (cm)	86	90	94	97	100	103	106	109	115	120	125	130	135	140



**Bust (B):** measure horizontally around the fullest part of the bust.

**Hip (H):** measure horizontally around the widest part of the lower body.

## measurements (in cm)

size	32	34	36	38	40	42	44	46	48	50	52	54	56	58
length	86.75	87.25	87.75	88.5	89	89.5	90.5	91.5	92.75	94	95.25	96.5	97.75	98.75
sleeve length*	52.5	53	53.5	54	54.5	55	55.75	56.25	56.75	57.5	58.25	58.75	59.5	60.25
1/2 bust	43.75	45.75	47.75	49.75	51.75	53.75	55.75	57.75	60.75	63.75	66.75	69.75	72.75	75.75
upper arm circumference	30	31.25	32.5	33.75	35	36.25	37.5	38.75	42.25	44	46	48	50	52
sleeve hem	32.5	33.75	34.75	36	37	38.25	39.5	40.5	44	46	47.5	49.75	51.75	53.75

\* Including the shoulder length.



Compare the stated lengths to the measured or desired lengths. **Lengthen** or **shorten** the dress and/or the sleeves by cutting the pattern pieces at the indicated double lines and then spreading the pattern pieces out X cm from each other or overlapping them where needed. Make sure that the CF and CB lines and the side seams are always straight.



### IMPORTANT

Adapt the use of fabric based on these alterations.

## supplies



- Thread
- Hook and eye: 1
- Iron-on interfacing: max. 15 cm
- Decorative ribbons\* (optional): max. 350 cm
- Fabric: see table

\* You can sew the ribbons between the different pattern pieces. To sew the ribbon onto the sleeve, cut through the pattern piece and be sure to leave a seam allowance on both pieces.

fabric used (in cm) F collection	32	34	36	38	40	42	44	46	48	50	52	54	56	58
embroidered blue fabric fabric width 160 cm	275	280	280	285	290	290	300	310	325	340	350	365	375	390
white textured fabric fabric width 130 cm	250	260	265	275	280	285	295	380	390	410	425	455	470	485

Find out everything you need to know about the Fibre Mood fabric collection and the accompanying fabric plans [here](https://www.fibremood.com/en/fabrics) or on [www.fibremood.com/en/fabrics](https://www.fibremood.com/en/fabrics).

fabric used (in cm) standard	32	34	36	38	40	42	44	46	48	50	52	54	56	58
fabric width 140 cm	250	255	265	270	280	285	295	300	310	330	340	355	370	395

The corresponding fabric plan can be found on the last page of these sewing instructions.

## fabric advice



Use a light fabric for the Mira dress such as a cotton (either textured or with a subtle print) or go for something ultra feminine with lace, broderie anglaise, voile, etc. Pick something white to add an extra romantic touch. Find out everything you need to know about the Fibre Mood fabric collection [here](https://www.fibre mood.com/en/fabrics) or on [www.fibre mood.com/en/fabrics](https://www.fibre mood.com/en/fabrics).

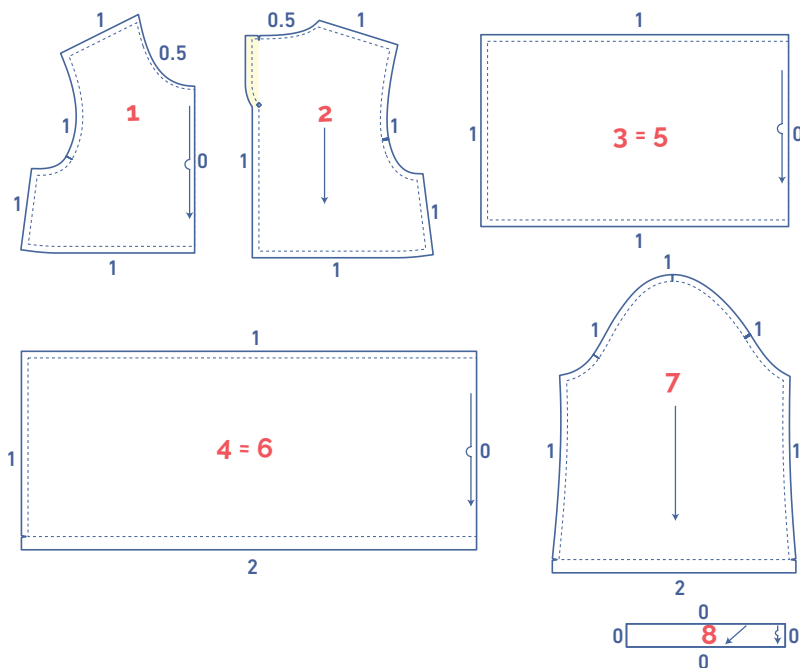
## pattern pieces & seam allowances (in cm)

To sew the garment as described in the instructions, you must draw the illustrated seam allowances around the paper pattern pieces before cutting them out.

### IMPORTANT

Pattern pieces 3 and 5, 4 and 6 are the same pattern pieces.

1. front: 1x on fabric fold
2. back: 2x
3. skirt upper band front: 1x on fabric fold
4. skirt lower band front: 1x on fabric fold
5. skirt upper band back: 1x on fabric fold
6. skirt lower band back: 1x on fabric fold
7. sleeve: 2x
8. bias tape neck: 1x on fabric fold (on the bias to the grain). You will have to draw this pattern yourself. Draw a rectangle using the measurements in the table (in cm):



size	32	34	36	38	40	42	44	46	48	50	52	54	56	58
height	3.5	3.5	3.5	3.5	3.5	3.5	3.5	3.5	3.5	3.5	3.5	3.5	3.5	3.5
width	23	23.5	24	24.5	25	25.5	26	26.5	27.25	28	28.75	29.5	30.25	31

### Mark key points on the pattern piece:

- Mark the tip of the nip of the back neck opening by sewing through the centre of the (◇) with needle and basting thread (↺).

### Indicate crucial points on the outline of the pattern:

- Nick the pattern paper and fabric at the places where a single vertical line (I) and double vertical lines (II) have been indicated.
- Cut a small corner out of the fabric where a V notch or at the finished hemline.
- Cut a small corner (V notch) out of the pieces that lie on the fabric fold to mark the middle of these pieces.

### IMPORTANT

The pieces highlighted in light yellow have iron-on interfacing attached to the wrong side.

# sewing instructions



The method used to finish sewing the garment depends on the fabric used. The pieces are always sewn together with the right sides of the fabric matching exactly, unless stated otherwise.

F front

B back



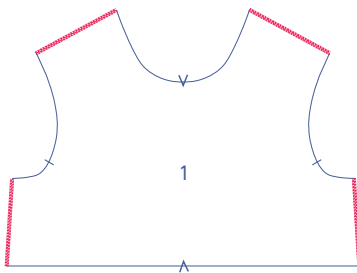
right side



wrong side

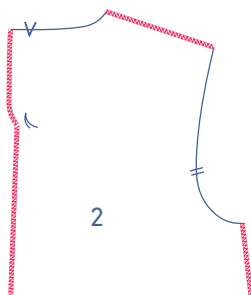


iron-on interfacing



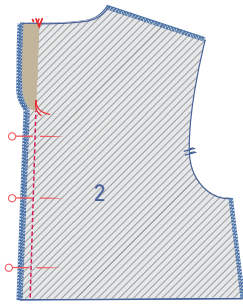
**1**

Finish the shoulder and side seams of the front (1) using an overlock stitch.

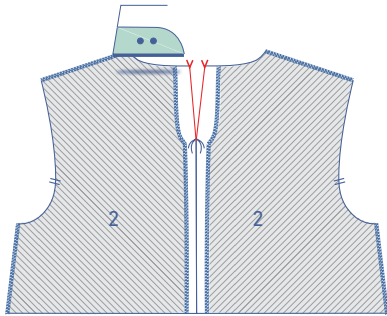


**2**

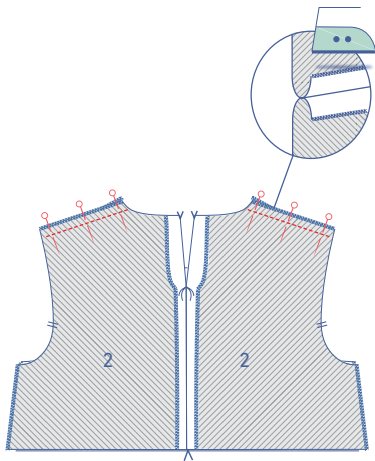
Finish the shoulder, side and CB seams of the back (2) using an overlock stitch.



Pin and sew both pieces together up to the basting thread.

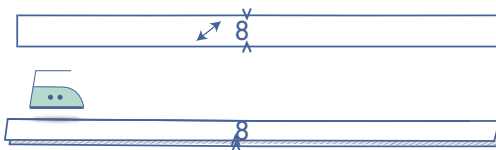


Press the seam allowance of the CB open and the facings of the slit over to the V notch to create a crease.



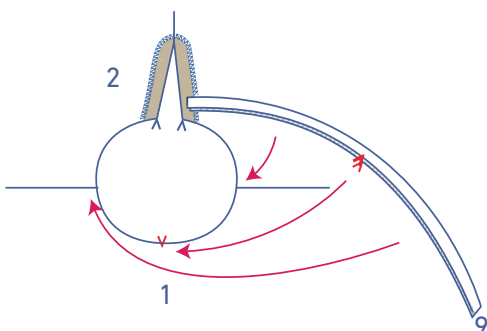
**3**

Pin and sew the shoulder seams and press the seam open.

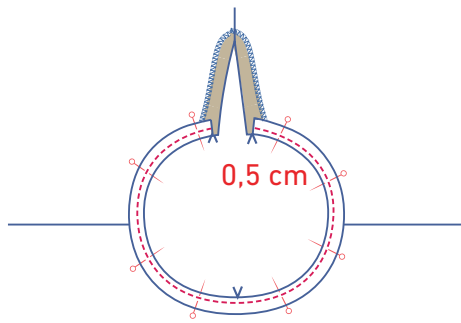


**4**

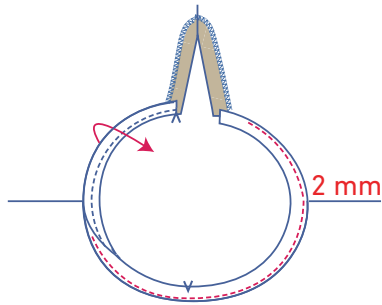
Press the bias tape for the neck (8) in half lengthwise with the right side of the fabric facing outwards.



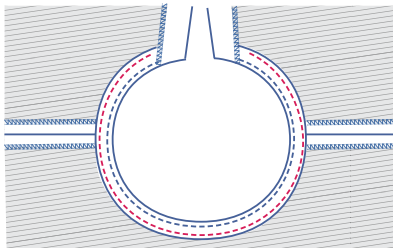
Now press the facing over to the right side of the back at the V notches.



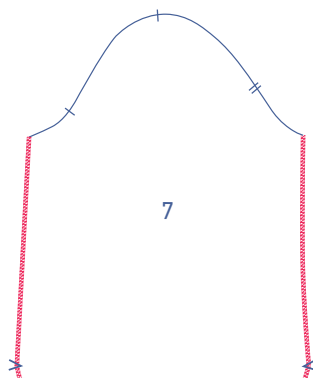
Pin and sew both raw edges of the bias tape to the neckline. The bias tape is on top of the folded facing. Sew into place at 0.5 cm.



Fold the bias tape and the seam allowance out of the way and sew the bias tape into place at 2 mm from the seam through all the layers of fabric.

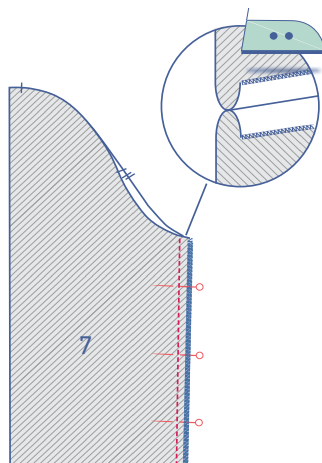


Fold the bias tape all the way over to the wrong side and sew it into place right next to the edge.

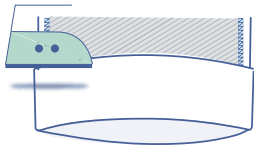


## 5

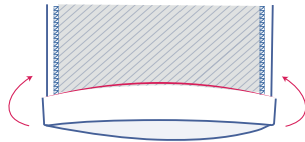
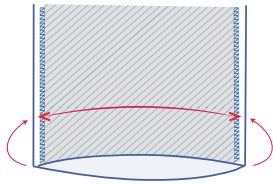
Finish the sides of the sleeve (7) using an overlock stitch.



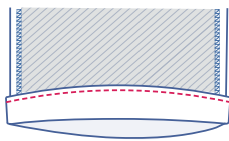
Pin and sew the sleeves closed and press the seams open.



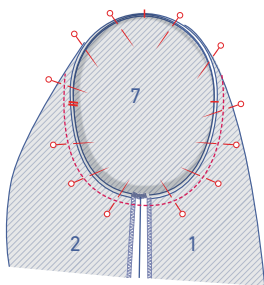
Finish the sleeve hem: press the seam allowance over to the V notch and fold back open.



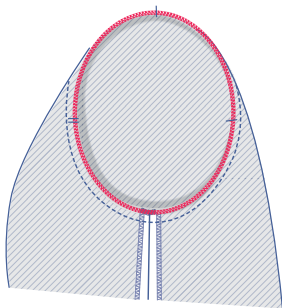
Place the raw edge along the pressed crease and then fold once again.



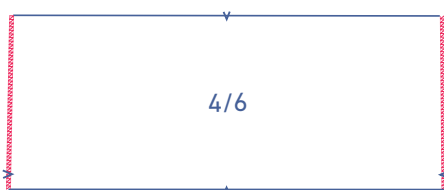
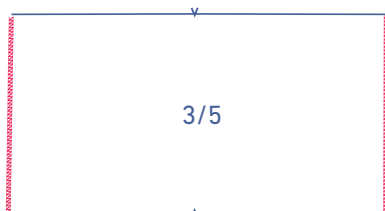
Sew in place next to the edge.



Pin the sleeve to the armhole, matching the corresponding nicks. The single nick matches the front, while the double matches the back, and the single nick at the top matches the shoulder seam. Distribute the fabric between the markings. Sew in place.



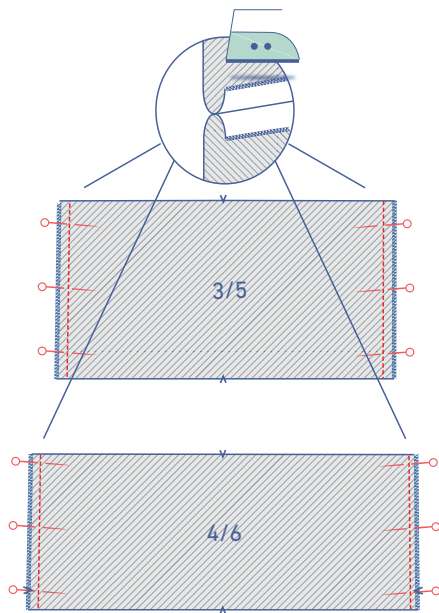
Finish the raw edges together using an overlock stitch.



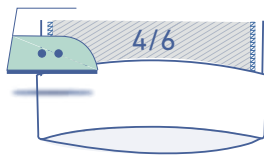
## 6

Finish the side seams of all the skirt pieces (3/5, 4/6) using an overlock stitch.

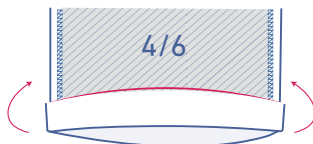
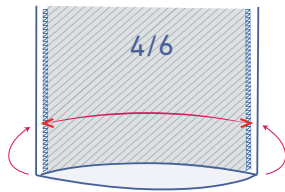




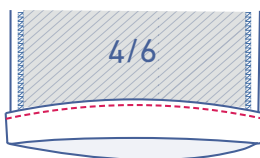
Pin and sew the side seams and press them open.



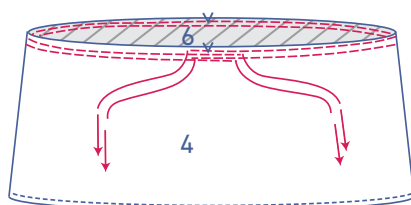
Finish the hem of the lower band (4/6): press the seam allowance over to the V notch and fold back open.



Place the raw edge along the pressed crease and then fold once again.

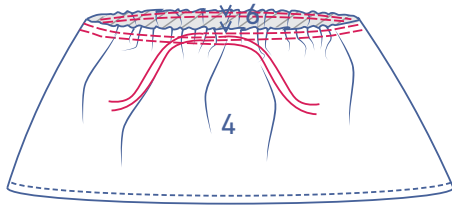


Sew in place next to the edge.

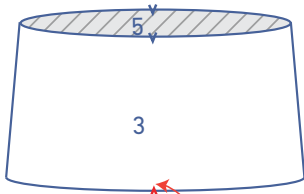


**7**

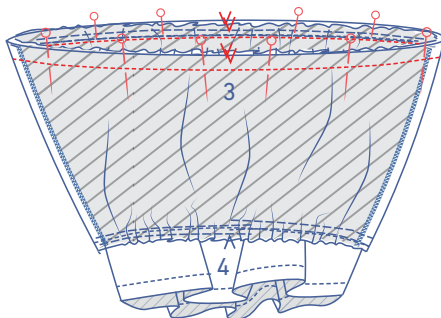
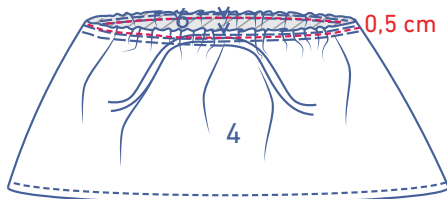
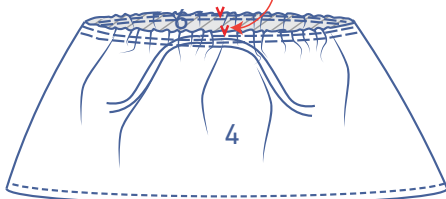
Using a long stitch length and add a lower thread tension, sew two parallel stitches along the top of the lower band.



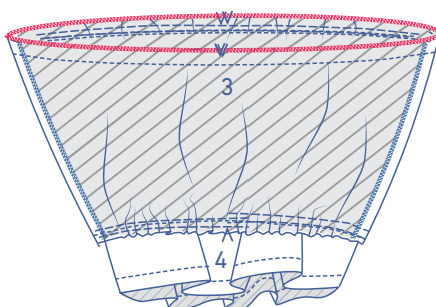
Carefully tug the ends of the threads to gather the fabric into ruffles.



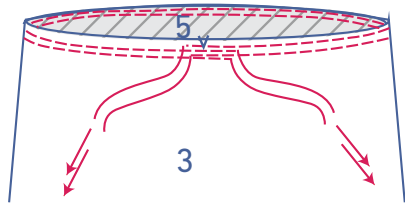
Distribute the gathered fabric until the V notches line up with the V notches of the upper band. Sew the ruffles in place at 0.5 cm away from the top edge.



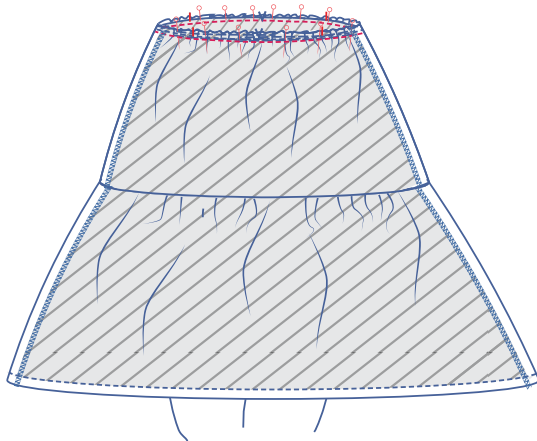
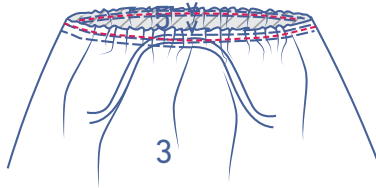
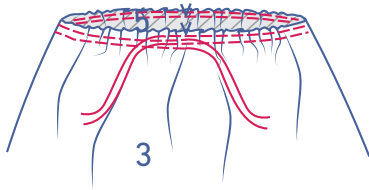
Pin and sew the top of the upper band to the bottom of the lower band and remove the gathering threads.



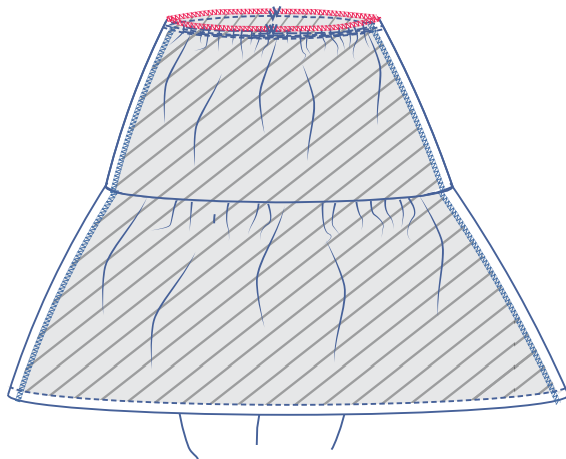
Finish the seam using an overlock stitch.



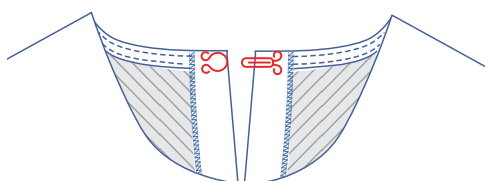
Gather the top of the upper band the same way you did for the top of the lower band until it lines up with the bottom of the top.



Pin and sew the top of the upper band (+ lower band) to the bottom of the top.



Finish the seam using an overlock stitch.

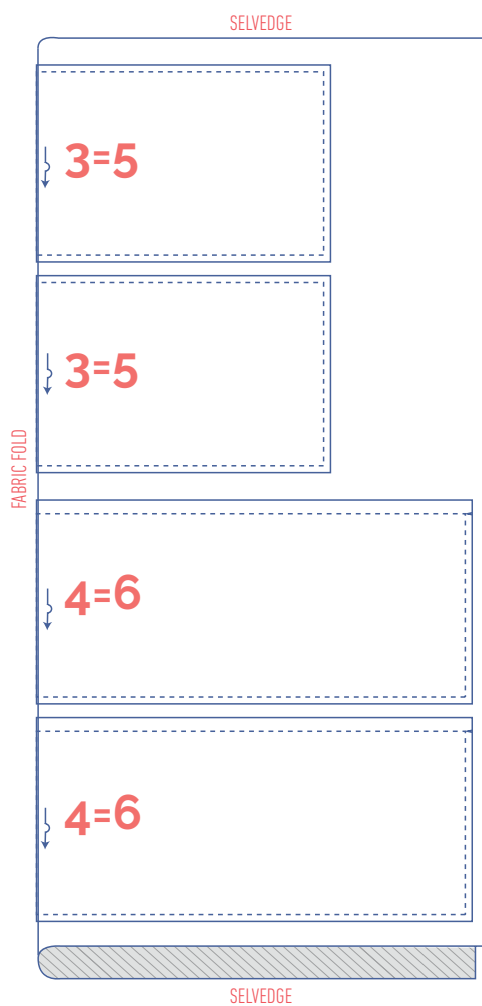
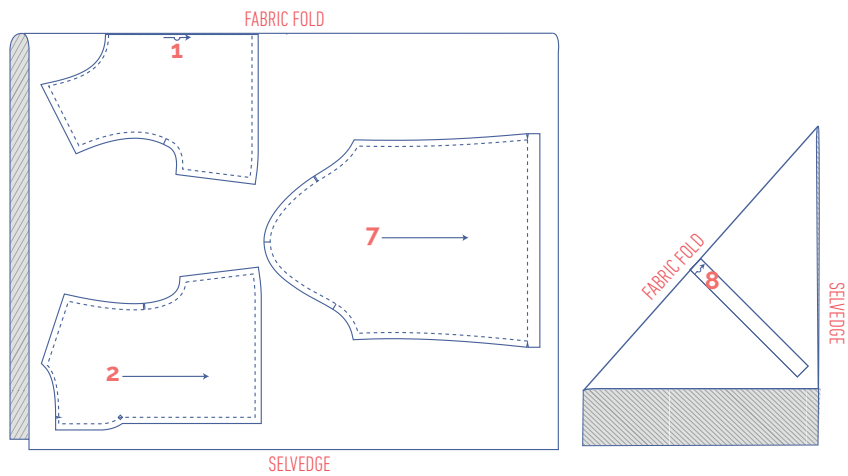


**8**

Sew on the hook-and-eye closure at the place indicated to finish the garment.

# fabric plan for standard fabrics 140 cm wide

size 32 - 56



size 58

