

# Taylor by Fibre ⚡ood



# Taylor by Fibre Mood



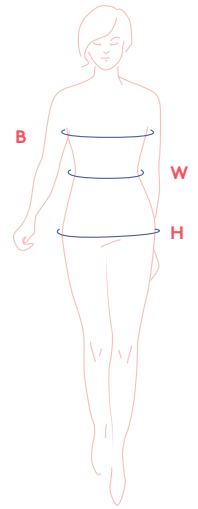
**XS - XXXL**

If elegant dresses are totally your thing, then the Taylor dress in your wardrobe is an absolute must. Taylor has shaped sleeves, sleeve trim and a slot neckline with a slight fold. The dress is cut in an A-line and has an elasticised waistline. It's sure to be a hit!



## size chart

| maat    | XS |    | S  |    | M   |     | L   |     | XL  |     | XXL |     | XXXL |     |     |
|---------|----|----|----|----|-----|-----|-----|-----|-----|-----|-----|-----|------|-----|-----|
| EU      | 32 | 34 | 36 | 38 | 40  | 42  | 44  | 46  | 48  | 50  | 52  | 54  | 56   | 58  | 60  |
| UK      | 4  | 6  | 8  | 10 | 12  | 14  | 16  | 18  | 20  | 22  | 24  | 26  | 28   | 30  | 32  |
| US      | 0  | 2  | 4  | 6  | 8   | 10  | 12  | 14  | 16  | 18  | 20  | 22  | 24   | 26  | 28  |
| BO (cm) | 76 | 80 | 84 | 88 | 92  | 96  | 100 | 104 | 110 | 116 | 122 | 128 | 134  | 140 | 146 |
| HO (cm) | 86 | 90 | 94 | 97 | 100 | 103 | 106 | 109 | 115 | 120 | 125 | 130 | 135  | 140 | 145 |

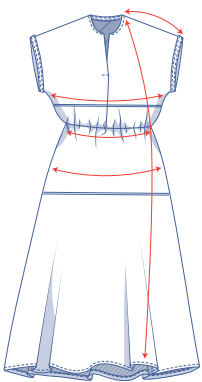


**Bust (B):** measure horizontally around the fullest part of the bust.

**Waist (W):** measure horizontally at the narrowest point of the body.

**Hip (H):** measure horizontally around the widest part of the lower body.

## finished garment measurements (in cm)



| size                        | XS    | S      | M      | L      | XL    | XXL   | XXXL   |
|-----------------------------|-------|--------|--------|--------|-------|-------|--------|
| length                      | 115   | 116.25 | 117.25 | 119.25 | 121   | 123.5 | 125.25 |
| sleeve length*              | 28    | 29     | 30.25  | 31.25  | 33    | 35.25 | 37.5   |
| 1/2 bust measurement        | 65.25 | 69.25  | 73.25  | 77.25  | 82.25 | 88.25 | 94.25  |
| 1/2 hip measurement         | 66.75 | 68.75  | 70.75  | 72.5   | 75    | 78    | 81     |
| 1/2 waistline measurement** | 57.25 | 61.25  | 65.25  | 69.25  | 74.25 | 80.25 | 86.25  |

\* Including the shoulder length.

\*\* Without elastic band.

### IMPORTANT

Adjust the fabric to be used based on these alterations.



Compare the stated lengths to the measured or desired lengths. **Lengthen** or **shorten** the dress and/or sleeves by cutting the pattern pieces at the indicated double lines and then spreading the pattern pieces out X cm from each other or overlapping them where needed. Make sure that the CF and CB lines and the side seams are always straight.

## supplies



- Thread
- Iron-on interfacing: max. 35 cm
- Elastic band: see table
- Fabric: see table

| elastic band | XS | S  | M  | L  | XL | XXL | XXXL |
|--------------|----|----|----|----|----|-----|------|
| 0.5 cm wide  | 66 | 70 | 78 | 84 | 96 | 109 | 121  |

| fabric used (in cm)<br>F collection | XS  | S   | M   | L   | XL  | XXL | XXXL |
|-------------------------------------|-----|-----|-----|-----|-----|-----|------|
| blue fabric fabric width 145 cm     | 260 | 265 | 265 | 275 | 285 | 290 | 295  |

Find out everything you need to know about the Fibre Mood fabric collection and the accompanying fabric plans [here](https://www.fibre mood.com/en/fabrics) or on [www.fibre mood.com/en/fabrics](https://www.fibre mood.com/en/fabrics).

| fabric used (in cm)<br>standard | XS  | S   | M   | L   | XL  | XXL | XXXL |
|---------------------------------|-----|-----|-----|-----|-----|-----|------|
| fabric width 140 cm             | 260 | 265 | 270 | 280 | 285 | 295 | 295  |

The corresponding fabric plan can be found on the last page of these sewing instructions.

## fabric advice



Make the Taylor dress in cotton, viscose, linen, a polyester blend, light wool, etc. Find out everything you need to know about the Fibre Mood fabric collection [here](http://www.fibre mood.com/en/fabrics) or on [www.fibre mood.com/en/fabrics](http://www.fibre mood.com/en/fabrics).

## pattern pieces & seam allowances (in cm)

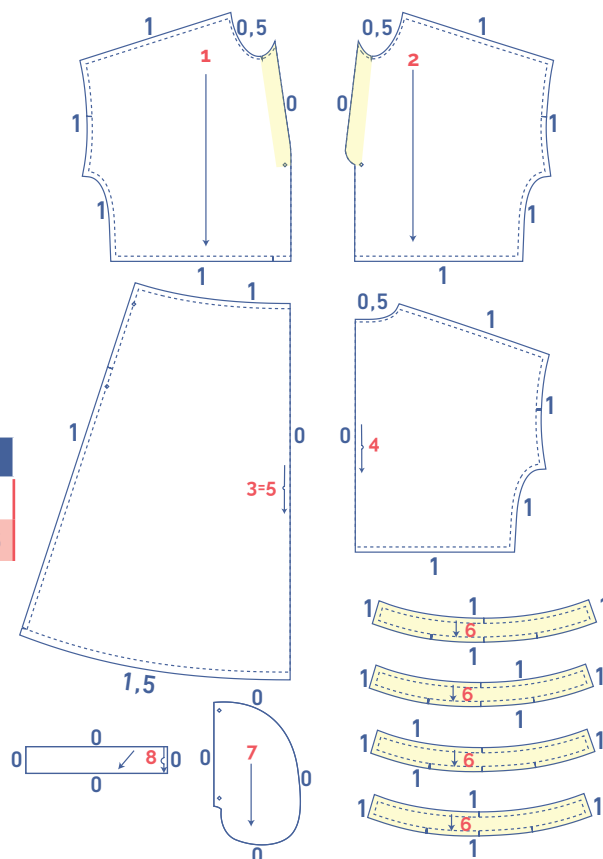
To sew the garment together as described in the instructions, you must draw the illustrated seam allowances around the paper pattern pieces before cutting them out.

1. right front piece of top: 1x
2. left front piece of top: 1x
3. skirt front: 1x on fabric fold
4. top back: 1x on fabric fold
5. skirt back: 1x on fabric fold
6. sleeve trim: 4x
7. pocket: 4x
8. bias tape neck: 1x on fabric fold (on the bias to the grain), you will need to draw this pattern piece yourself. Draw a rectangle using the measurements in the table (in cm).

| size   | XS   | S    | M     | L   | XL    | XXL   | XXXL  |
|--------|------|------|-------|-----|-------|-------|-------|
| height | 3,5  | 3,5  | 3,5   | 3,5 | 3,5   | 3,5   | 3,5   |
| width  | 17,5 | 18,5 | 19,25 | 20  | 21,75 | 22,25 | 22,75 |

### IMPORTANT

Pattern pieces 3 and 5 are the same pattern piece.



Indicate crucial points on the pattern:

- Mark the pocket opening and the tip of the slot in the neckline by sewing through the centre of the (◇) with needle and basting thread (↖).

Indicate crucial points on the outline of the pattern:

- Neatly nick the pattern paper and fabric at the places where a single vertical line (I) or double vertical lines (II) have been indicated.
- Cut a small corner out of the fabric where a V symbol has been made and on the finished hemline.
- Cut a small corner (V notch) out of the pieces that lie on the fabric fold to mark the middle of these pieces.

### IMPORTANT

The pieces highlighted in light yellow have iron-on interfacing attached to the wrong side.

# knitting instructions



The method used to finish sewing the garment depends on the fabric used. The pieces are always sewn together with the right sides of the fabric matching exactly, unless stated otherwise.

FP front panel

BP back panel

RFP right front panel

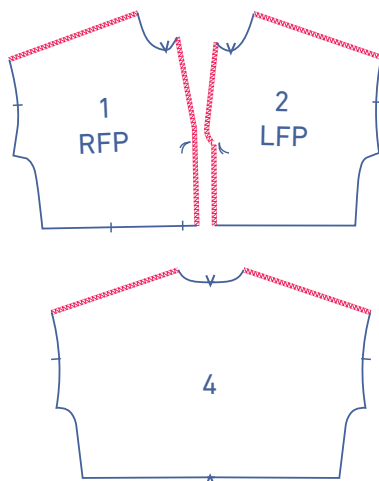
LFP left front panel

□ right side

▨ reverse side

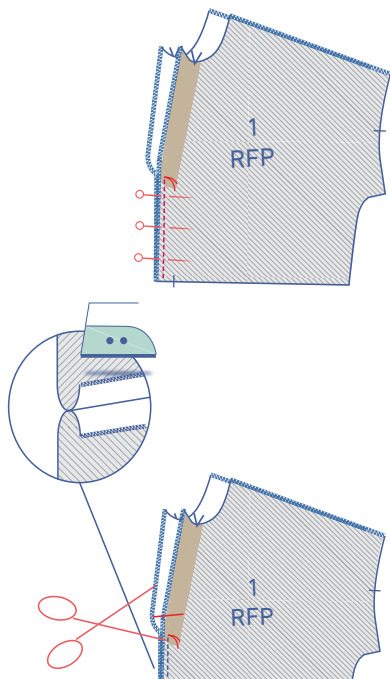
▤ iron on interfacing

▥ elastic



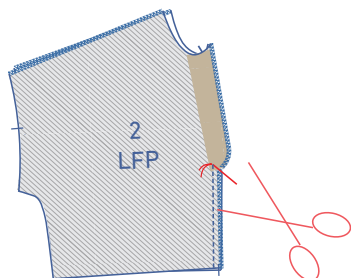
## 1

Finish the shoulder and CF seams of the RF top (1) and the LF top (2) and the shoulder seams of the top's back (4) using an overlock stitch.

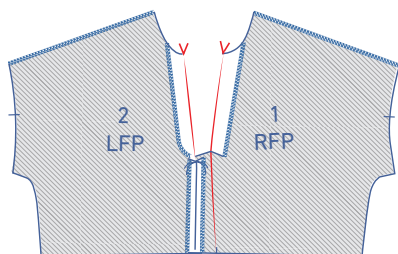


Pin the CF seams together from the bottom up to the basting thread and sew in place.

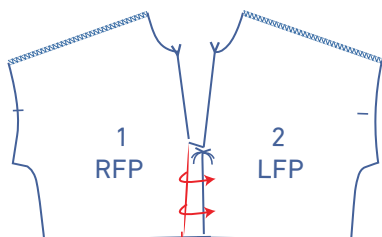
Snip into the shaped facing of the RF so that you can press it over to the V notch.



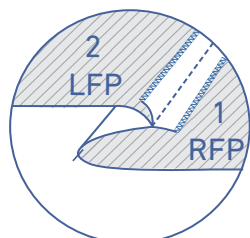
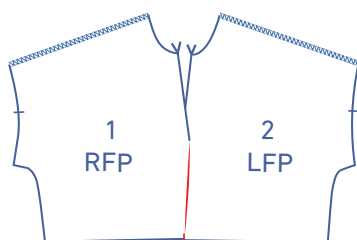
Snip diagonally into the seam allowance of the LF until just before the basting thread.

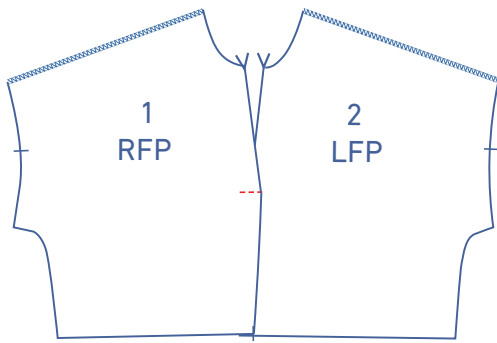


Press the shaped facings over to the V notches.

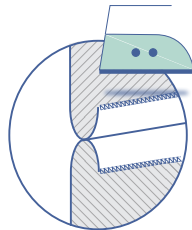


Fold the RF onto the LF to the nick at the bottom. This creates a tiny crease down the front.



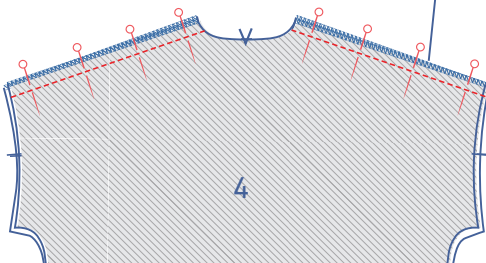


Sew both pieces together.



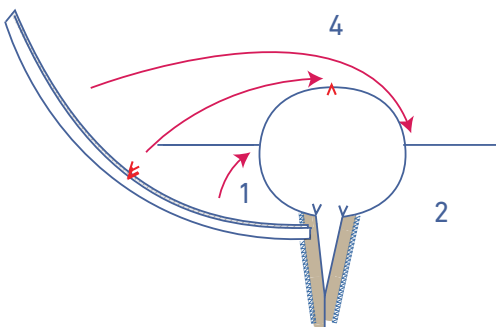
**2**

Pin and sew the shoulder seams and press the seam allowance open.

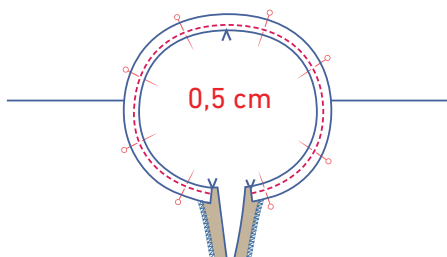


**3**

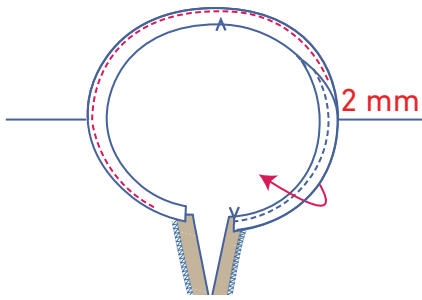
Press the bias tape for the neck (8) in half lengthwise with the right side of the fabric facing outwards.



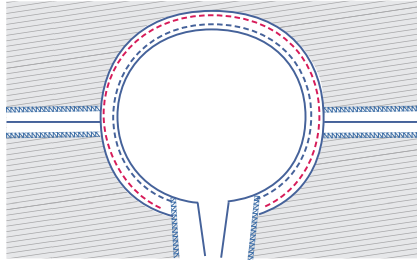
Pin both raw edges of the bias tape to the neckline along the right side of the work piece and on the folded shaped facings.



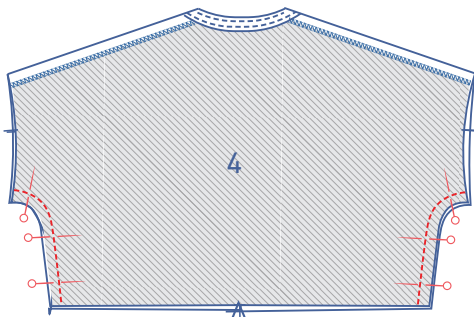
Sew into place at 0.5 cm.



Fold the bias tape and the seam allowance out of the way and sew the bias tape in place at 2 mm from the seam through all layers (= the bias tape + the seam allowance underneath) of fabric.

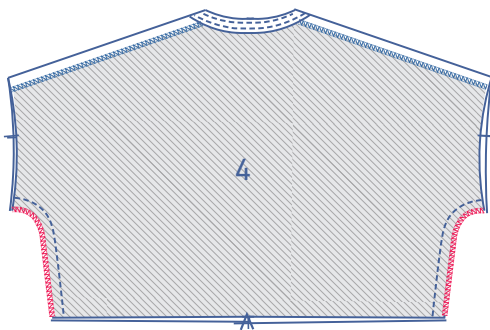


Fold the bias tape all the way over to the wrong side and sew it into place right next to the edge.

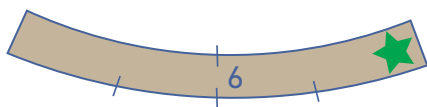


**4**

Pin and sew the side seams into place.

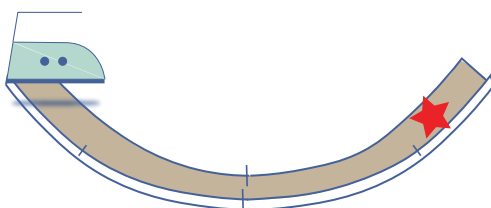


Finish the raw edges together using an overlock stitch.

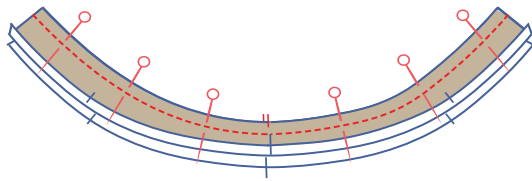


**5**

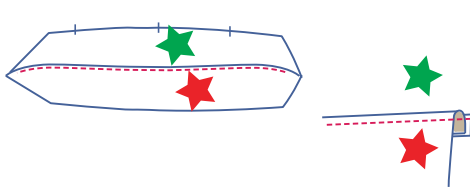
Press 2 of the 4 pieces of sleeve trim (6) at the bottom 1cm over to the wrong side. The pieces with the pressed sides are marked with a red star. The pieces with pressed sleeve trim are marked with a green star.



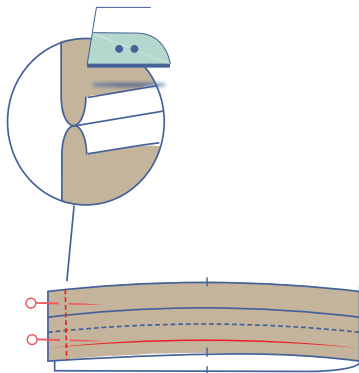




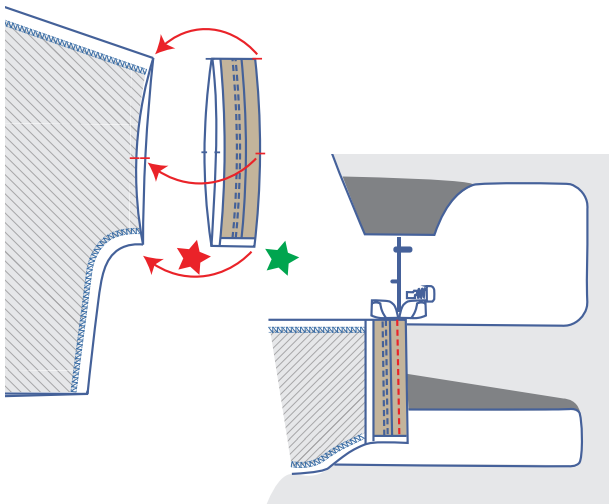
Stack both pieces of sleeve trim with the right sides facing each time. Pin and sew the uppermost long sides to each other.



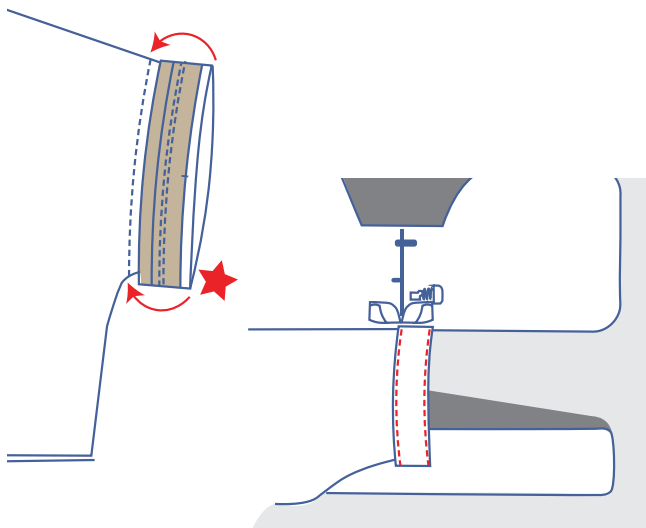
Fold the sleeve trim with the pressed side (= red star) up with the underlying seam allowance and sew this sleeve trim at 2 mm from the seam.



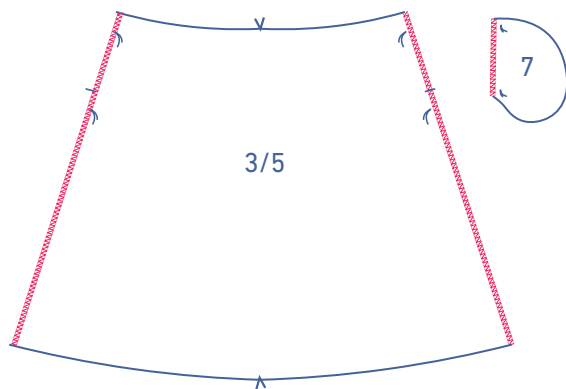
Fold the sleeve trim in half crosswise and sew the seam. Press the seam allowance open.



Pin and sew the sleeve trim with the green star to the armhole along the back of the piece.

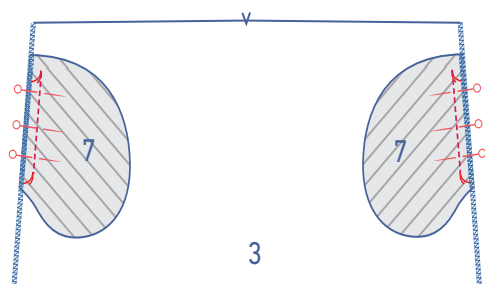


Fold the sleeve trim with the pressed bottom (= red star) over to the right side of the armhole. The fold like should lie just on the previous stitching. Pin and sew in place. Top stitch right next to the other edge of the sleeve trim too.

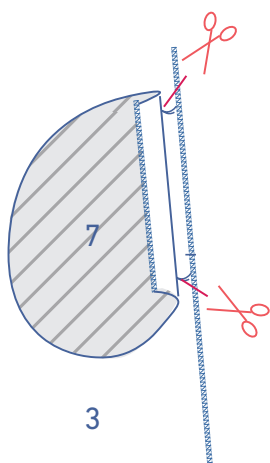


## 6

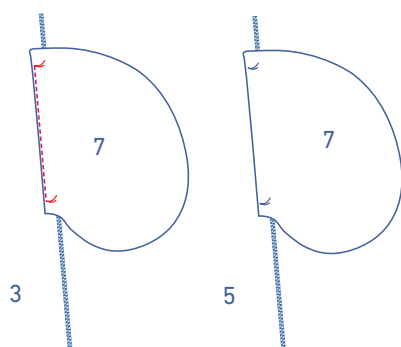
Finish the side seams of skirt front (3) and skirt back (5) and the right side of all the pocket pieces (7) using an overlock stitch.



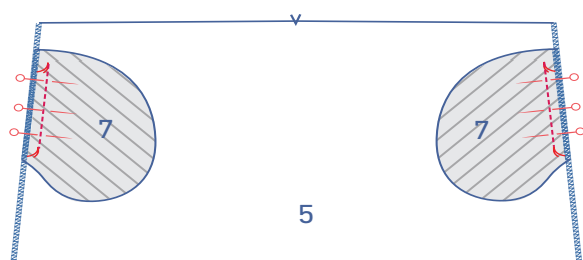
Pin the right-hand side of the pocket to the side seam of skirt front (3) with basting threads matching perfectly. Sew between the basting threads.



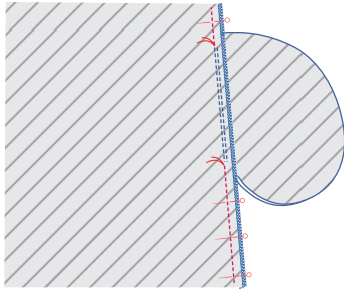
Fold the seam allowance of the pocket to the side and cut diagonally into the seam allowance of the front up to the basting thread.



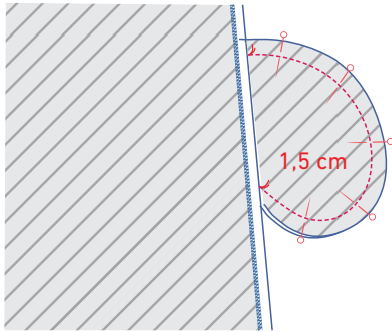
Fold the pocket and the seam allowance to the side and stitch at 2mm from the seam, sewing through all layers (= the pocket + the seam allowance folded over to the side of the pocket).



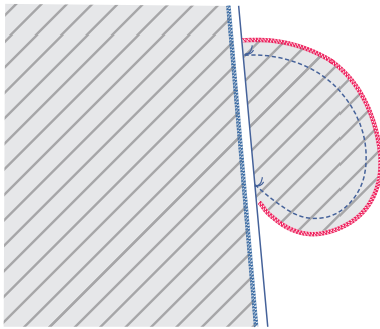
Pin the right side of the other pocket piece to the side seam of skirt back (5). Sew in place between the basting threads.



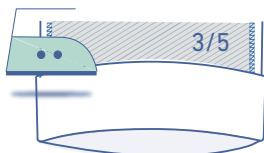
Pin and sew the side seams together above and below the pocket opening, always sewing right up to the basting threads. Make sure to lay the pocket pieces to the side when sewing the seam allowance. Press the seam allowance open.



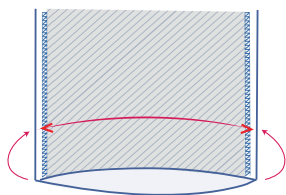
Pin the contours of the pocket pieces. Sew in place, starting right from and up to the basting threads at 1.5 cm from the contours. To do this, lay the seam allowance of the skirt to the side.



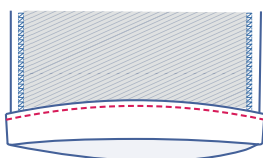
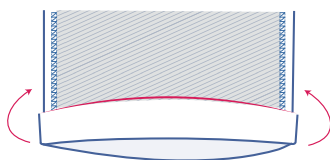
Finish the raw edges using an overlock stitch.



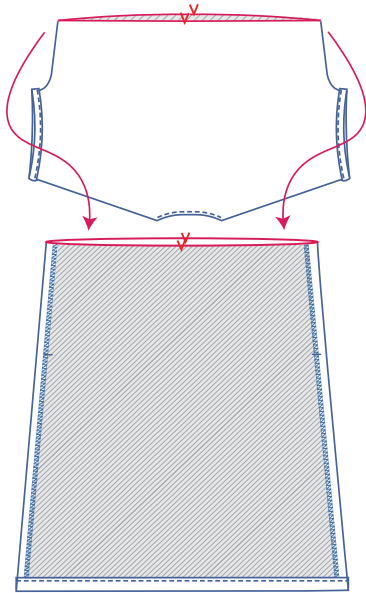
Press the hem allowance over to the V nicks and fold back open.



Fold the raw edge of the hem onto the pre-pressed fold line and then fold over a second time.

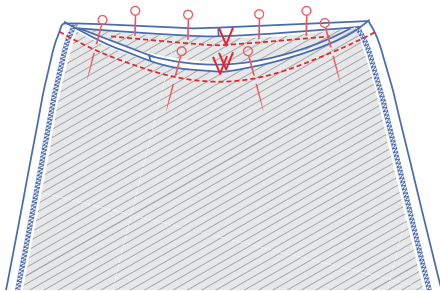


Sew in place right next to the edge.

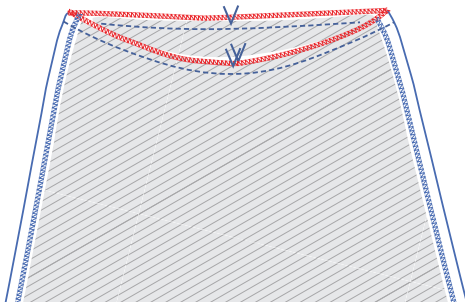


## 7

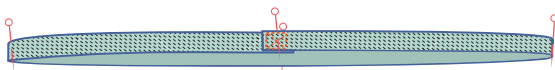
Slide the top into the skirt with the right sides facing, so that the waist seams line up.



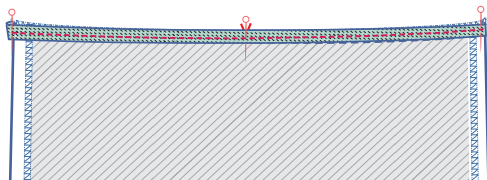
Pin and sew the top of the skirt to the bottom of the top, making sure that the nicks and side seams match perfectly.



Finish the raw edges together using an overlock stitch.



Allow 3 cm of the ends of the elastic to overlap and sew in place. Divide the elastic band into 4 equal parts and pin each of these points.



Use the same pins to pin the elastic to the seam allowance at the CF, CB and side seams. Stretch the elastic out and sew in place on the seam allowance.

**fabric plan for fabric 140 cm wide**

**for size XS - XXXL**

