

# Simon by Fibre ⚡ood



# Simon by Fibre ood

\*\*\*✂✂



**2 - 14 years**

Simon is a trendy hip-length spring jacket in a straight cut. It has a collar and a button closure and large patch pockets. If you'd like a funky, contrasting effect, you can make the breast pocket in a different colour or print.

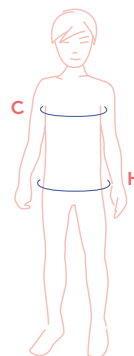


## size Chart

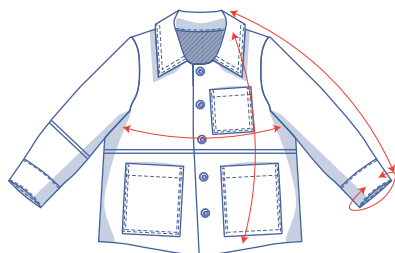
size (age)	2	3	4	5	6	8	10	12	14
<b>C (cm)</b>	52	54	56	58	60	64	68	72	76
<b>H (cm)</b>	56	58	60	62	64	68	72	76	80

**Chest (C):** measure horizontally around the fullest part of the chest.

**Hip (H):** measure horizontally around the widest part of the lower body.



## finished garment measurements (in cm)



size (age)	2	3	4	5	6	8	10	12	14
<b>length</b>	42.5	44.5	46.75	47.75	49	53.25	57.5	61.75	66
<b>sleeve length*</b>	31	35.5	38.25	41	42.75	46.75	51.5	56.25	61
<b>1/2 chest measurement</b>	33.5	34.5	35.5	36.5	37.5	39.5	41.5	43.5	45.5
<b>wrist trim circumference</b>	21.5	22	22.5	22.75	23.25	23.75	25	26.5	27.75

\* Including the shoulder length.

Compare the stated lengths to the measured or desired lengths. **Lengthen** or **shorten** the jacket and/or sleeves by cutting the pattern pieces at the indicated double lines and then spreading the pattern pieces out X cm from each other or overlapping them where needed. Make sure that the CF and CB lines and the side seams are always straight.



### IMPORTANT

Adapt the use of fabric based on these alterations.

## supplies



- Thread
- Iron-on interfacing: max. 70 cm
- Snaps or (jeans) buttons (Ø 1.2 cm): 7 (sz 2-6 y), 8 (sz 8-10 y) and 9 (sz 12-14 y)
- Fabric: see table

fabric used (in cm) F collection	2	3	4	5	6	8	10	12	14
<b>black &amp; white jacquard</b> fabric width 165 cm	75	75	80	80	80	100	105	115	125

Find out everything you need to know about the Fibre Mood fabric collection and the accompanying fabric plans [here](https://www.fibre mood.com/en/fabrics) or on [www.fibre mood.com/en/fabrics](https://www.fibre mood.com/en/fabrics).

fabric used (in cm) standard	2	3	4	5	6	8	10	12	14
<b>fabric width 140 cm</b>	85	85	90	90	95	105	125	135	140

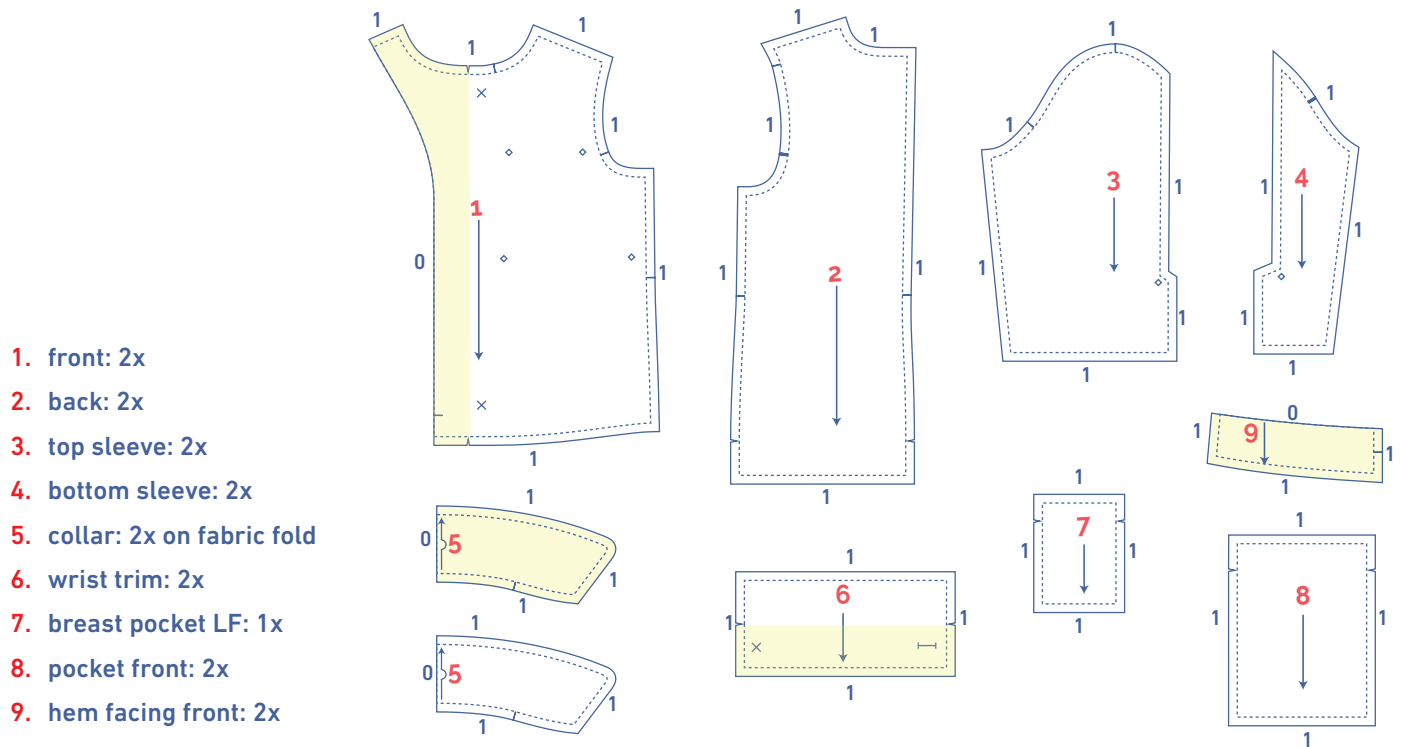
The corresponding fabric plan can be found on the last page of these sewing instructions.

**fabric advice** This kind of jacket should be made out of stiff fabric. Go for cotton twill for a 'workwear' look. You can also make it in a jacquard fabric for a fancier look. Find out all the facts about the Fibre Mood fabric collection [here](http://www.fibre mood.com/en/fabrics) or on [www.fibre mood.com/en/fabrics](http://www.fibre mood.com/en/fabrics).



## pattern pieces & seam allowances (in cm)

To sew the garment together as described in the instructions, you must draw the illustrated seam allowances around the paper pattern pieces before cutting them out.



1. front: 2x
2. back: 2x
3. top sleeve: 2x
4. bottom sleeve: 2x
5. collar: 2x on fabric fold
6. wrist trim: 2x
7. breast pocket LF: 1x
8. pocket front: 2x
9. hem facing front: 2x

### Indicate crucial points on the pattern:

- Mark the breast pocket, pockets and the tip of the sleeve slit by sewing through the centre of the (◇) with needle and basting thread (↱).
- Mark the location of the buttons by sewing through the centre of the (X) with needle and basting thread (↱).
- Mark the button holes by using needle and basting thread (↱) to indicate the sides (↔).

### Indicate crucial points on the outline of the pattern:

- Neatly nick the pattern paper and fabric at the places where a single vertical line (|) and double vertical lines (||) have been indicated.
- Cut a small corner out of the fabric where a V symbol is or on the finished hemline.
- Cut a small corner (V notch) out of the pieces that lie on the fabric fold to mark the middle of these pieces.

**IMPORTANT**

The pieces highlighted in light yellow have iron-on interfacing attached to the wrong side.

# knitting instructions



The method used to finish sewing the garment depends on the fabric used. The pieces are always sewn together with the right sides of the fabric matching exactly, unless stated otherwise.

F front

B back

RF right front

LF left front

RBP right back piece

LBP left back piece



right side



wrong side



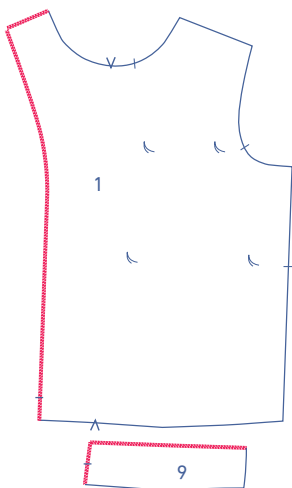
lining right side



lining wrong side

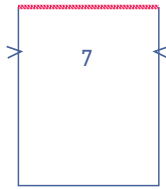


iron-on interfacing

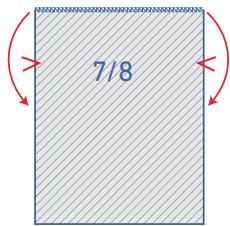
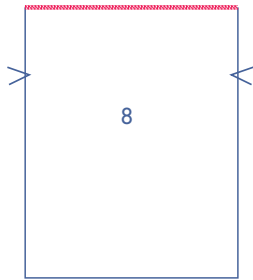


## 1

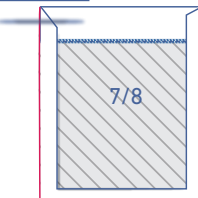
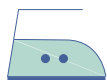
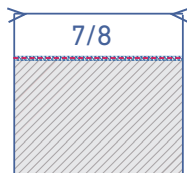
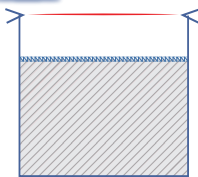
Finish the shoulder seam and the marked edge of the shaped facing of the front (1) and the short side with the nick and the top side of the hem facing front (9) using an overlock stitch.



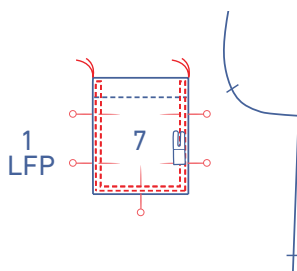
Finish the LF breast pocket (7) and the pocket (8) using an overlock stitch.



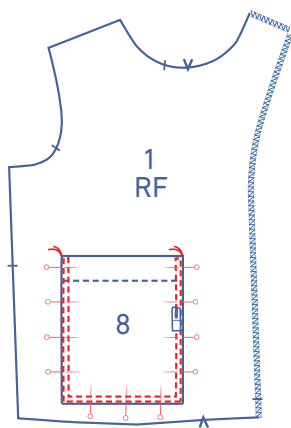
Always fold the top of the pocket down to the V notch. Sew the facing of the small pocket in place at 2.5 cm and the bigger pocket at 3 cm.



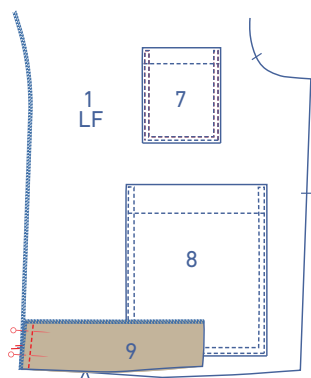
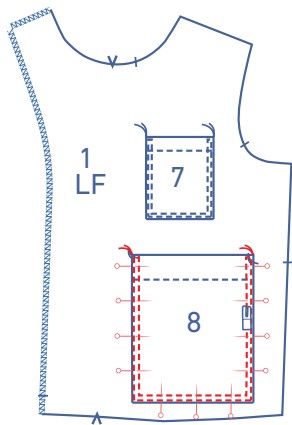
Press the seam allowance of the remaining 3 sides over to the wrong side.



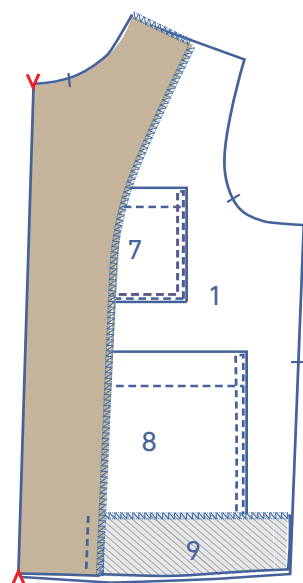
Pin the chest pocket to the LF (1) at the place marked. Sew in place right next to the edge. Top stitch next to the first line of stitching at presser foot width. Finish with horizontal reinforcement stitching between the two lines of top stitching.



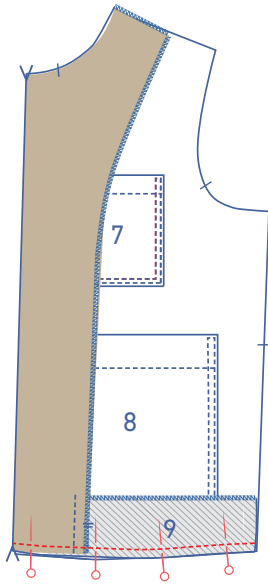
Pin the other pockets at the indicated locations. Sew in place right next to the edge. Top stitch at 0.5 cm from the first line of stitching. Finish with horizontal reinforcement stitching between the two lines of top stitching.



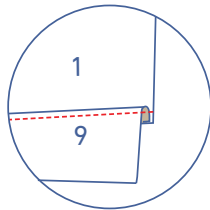
Pin and sew the short side of the front hem facing with the nick to the shaped facing of the front with the nicks matching perfectly.



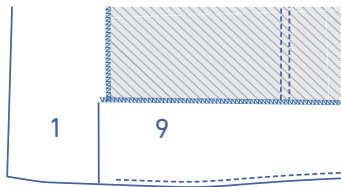
Fold the the shaped facing of the front over to the V notch at the hem, towards the right side. Press the seam allowance towards the hem facing.



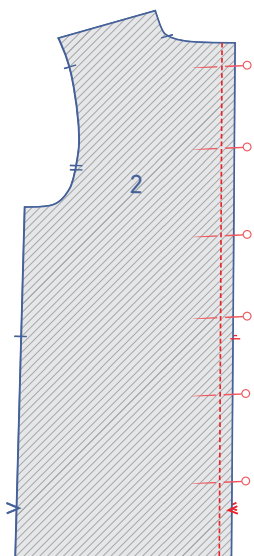
Pin and sew the bottom of the shaped facing and the hem facing to the bottom of the front.



Fold the hem facing and the seam allowance down and sew the hem facing at 2 mm from the seam through all layers of fabric.



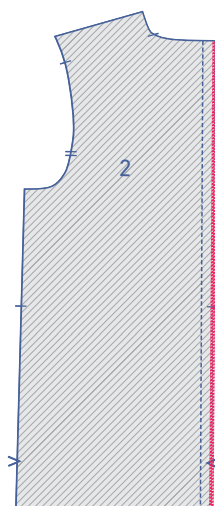
Fold back right side out.



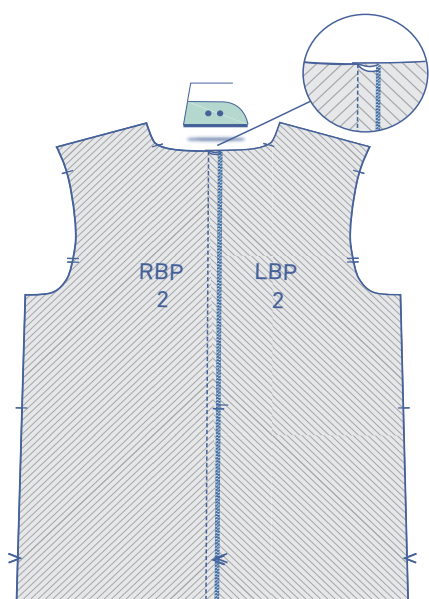
## 2

Pin and sew the CB seams of both back pieces (2) together.

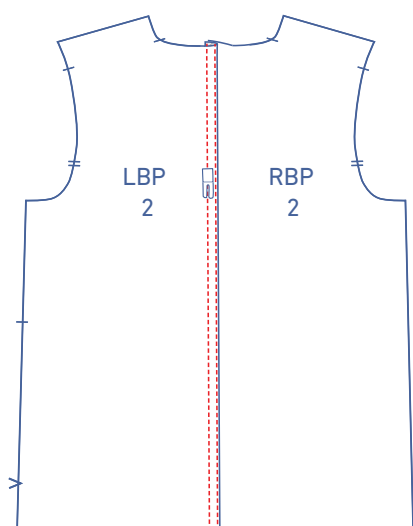




Finish the raw edges using an overlock stitch.



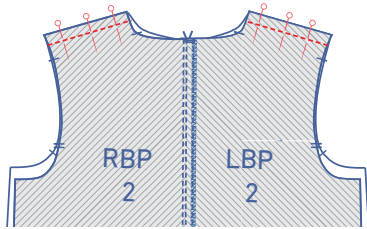
Press the seam allowance towards the LB.



Now double needle stitch or cover stitch the LB right next to the seam.

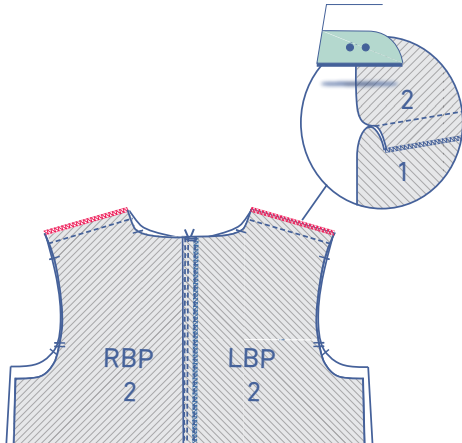


Finish the hem using an overlock stitch.

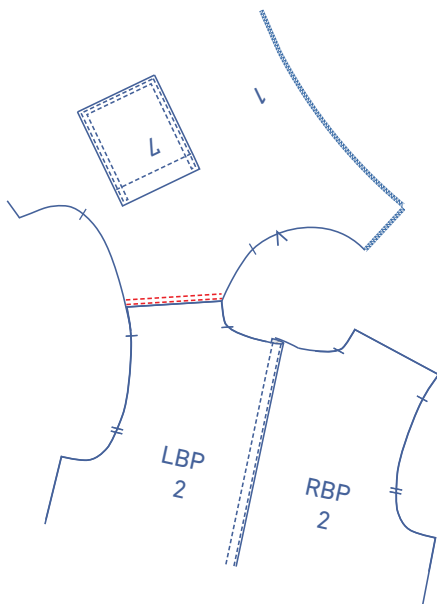


### 3

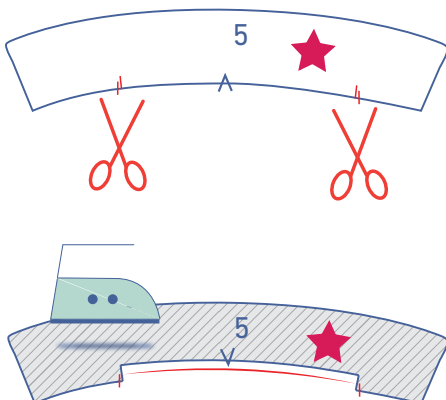
Pin and sew the shoulder seams.



Finish the raw edges together using an overlock stitch and press the seam allowance to the front.



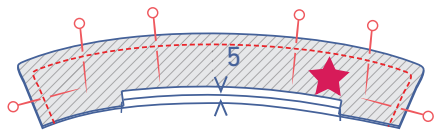
Now double needle stitch or cover stitch the front right along the edge of the shoulder seam.



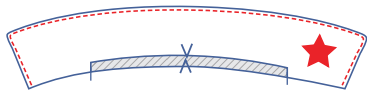
### 4

Snip into the top collar (= hasn't been sewn yet, marked with a red star) where indicated.

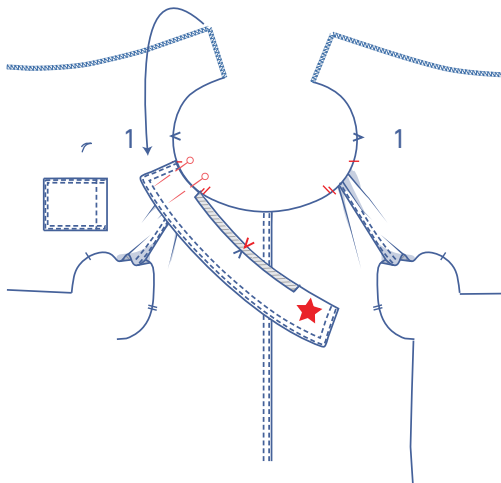
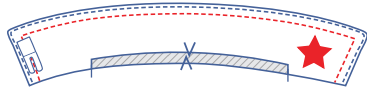
Press the seam allowance between these 2 nicks over to the wrong side.



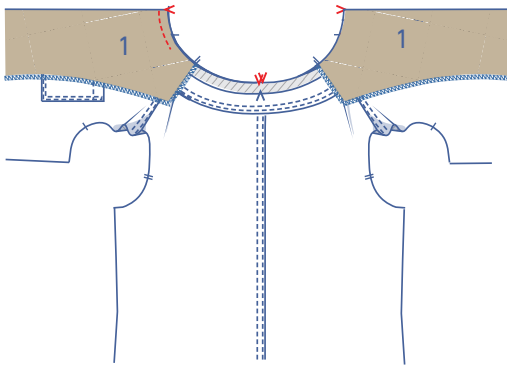
Pin and sew the contour of the 2 collars together, except for the bottom. Grade and trim the corner seam allowances. Turn inside out.



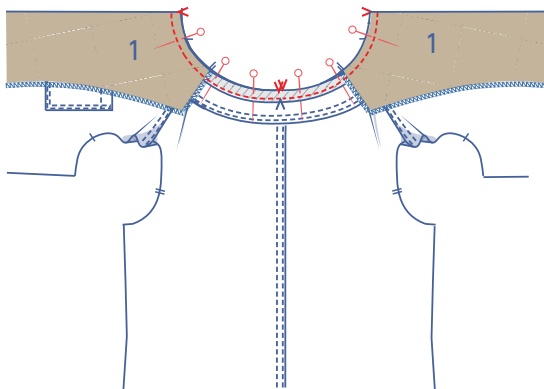
Double needle stitch or cover stitch right next to the edge. The collar with the red star should be facing up.



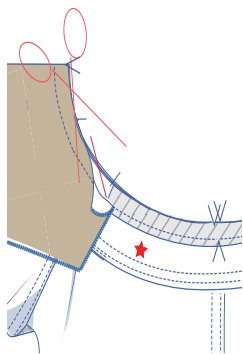
Pin the unfinished raw edges of the collar to the neckline. The top collar (collar piece with the red star) should be at the top. The single nick on the collar should align with the shoulder seam. The V notch indicating the middle of the collar should match the CB seam perfectly.



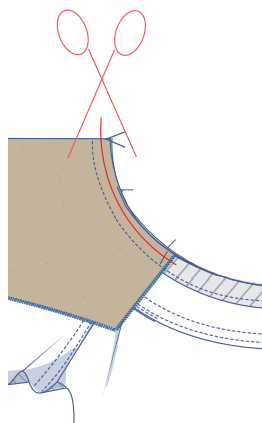
Now press the shaped facing over to the V notches on the right side. The facing is lined up with the collar.



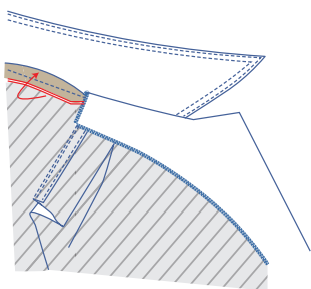
Sew the necklines together and move the piece of the top collar to the side at the neckline stitching on the back.



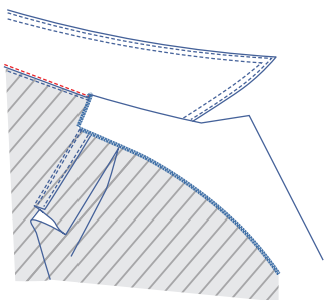
Cut diagonally into the seam allowance of the neckline starting from the shoulder seam up to the edge of the short side of the shaped facing. To do this, fold the shaping's seam allowance out of the way.



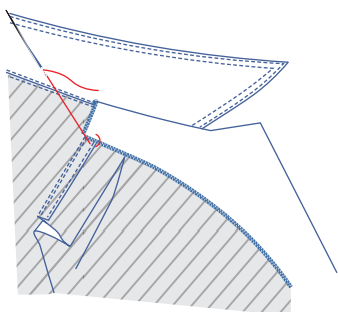
Cut out half of the neckline's seam allowance to create a nice round neckline.



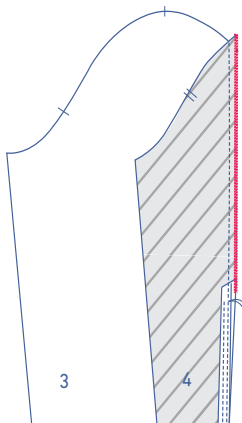
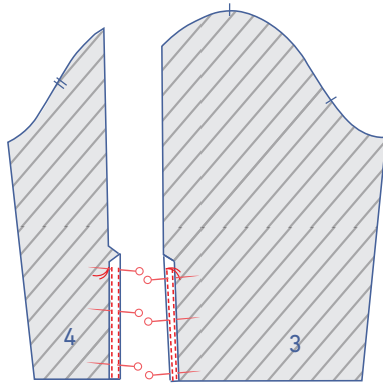
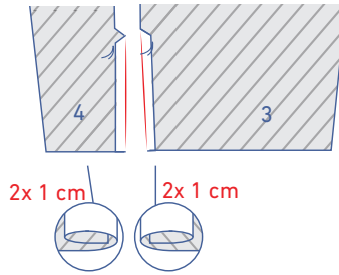
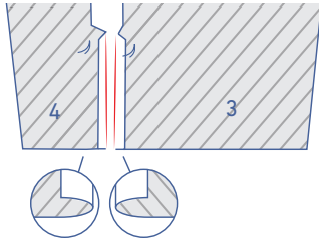
Turn inside out and fold the neckline's seam allowance of the back up, so that these 2 collars are tucked in place.



Sew in place right next to the folded edge of the top collar.



Sew the short side of the shaped facing, perhaps with just a few stitches.



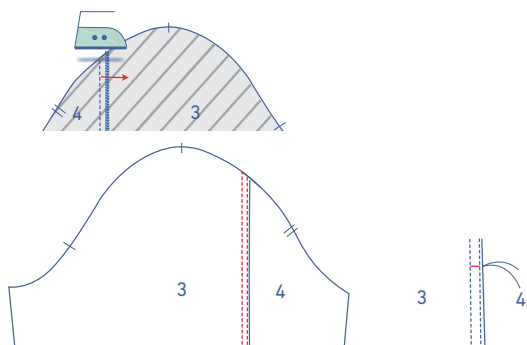
## 5

Fold the cut piece of facing over to the top sleeve slit (3) and the bottom sleeve (4) 2x 1 cm.

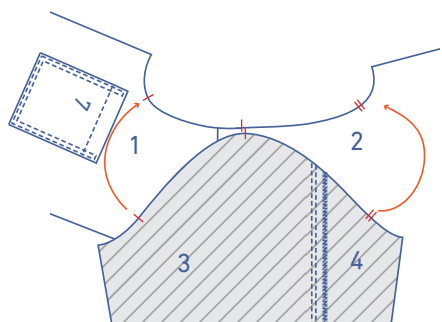
Sew in place up to the basting thread using a double needle stitch.

Pin the dart seams together up to the basting thread and sew in place.

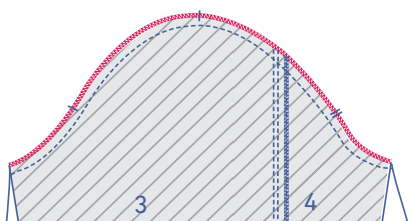
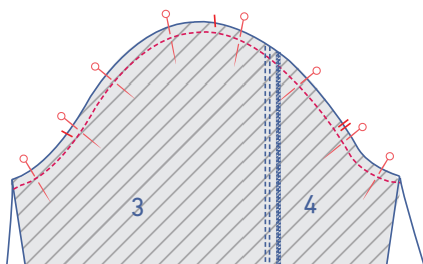
Finish the raw edges together using an overlock stitch.



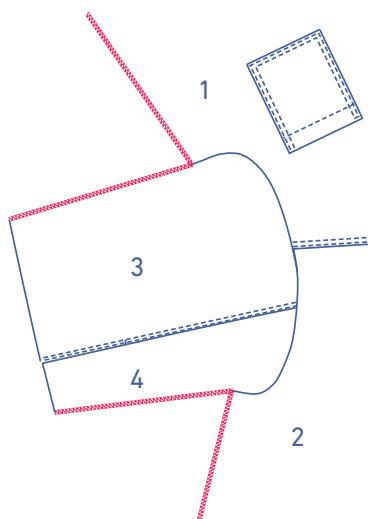
Press the seam allowance towards the top sleeve. Double needle stitch the top sleeve right next to the seam up to the slit. Sew a horizontal reinforcement stitch at the top of the slit between the double needle stitching.



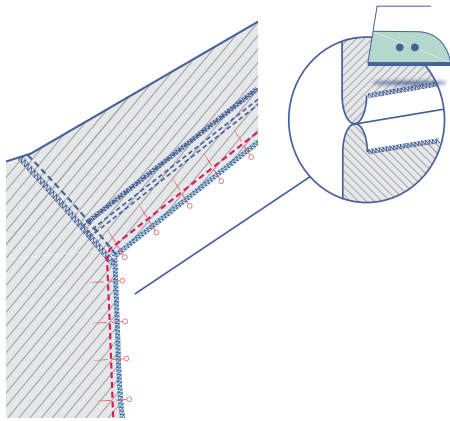
Pin and sew the sleeve cap to the armhole, making sure that the corresponding nicks match perfectly. The sleeve's single nick should match the single nick on the front, with the sleeve's double nicks matching the double nicks on the back, and the top single nick matched to the single nick marking the middle of the true shoulder. Distribute the fabric between the markings.



Finish the raw edges together using an overlock stitch.

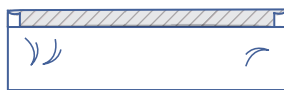
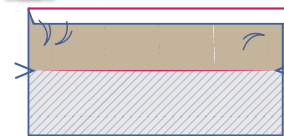


Also use an overlock stitch to finish the sides of the sleeves and the side seams.



## 6

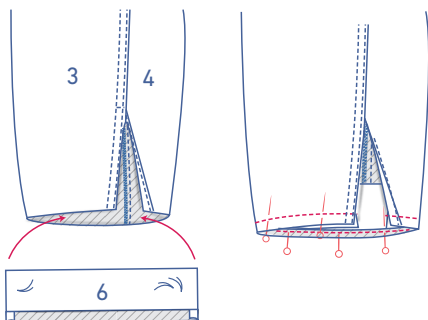
Fold the sleeve in half with the front and back together and pin and sew the underarm and side seams. The front's piece of hem facing should also be folded down. Press the seam allowance open.



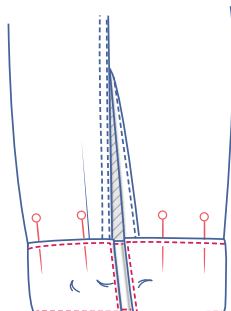
## 7

Press 1 cm along the long side of the wrist trim (6) seam allowance (on the side where the buttons and buttonholes are located) over to the wrong side.

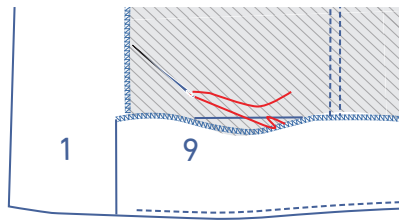
Fold the wrist trim in half lengthwise to where the V notches are located with the right side of the fabric faced inwards. Sew the short sides. Trim the seam allowance and turn inside out.



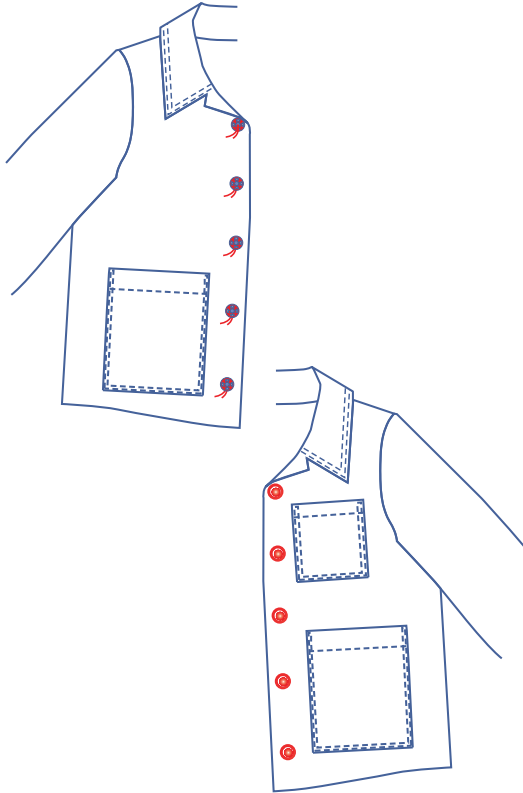
Slide the wrist trim into the sleeve. Pin and sew the pressed over raw edge of the wrist trim to the bottom of the sleeve along the wrong side of the sleeve.



Fold the wrist trim towards the right side of the sleeve and lay the fold line (of the pressed over seam allowance) directly onto the previous stitching. Sew in place next to the edge. Top stitch all the way around at 2 mm from the edge.

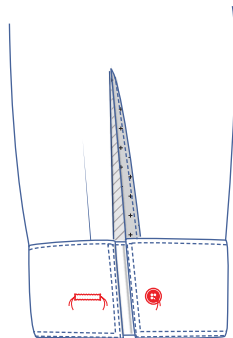


Press the hem allowance over and sew in place.



**9**

Attach the snaps or (jeans) buttons at the indicated places. Make button holes if you're using (jeans) buttons.

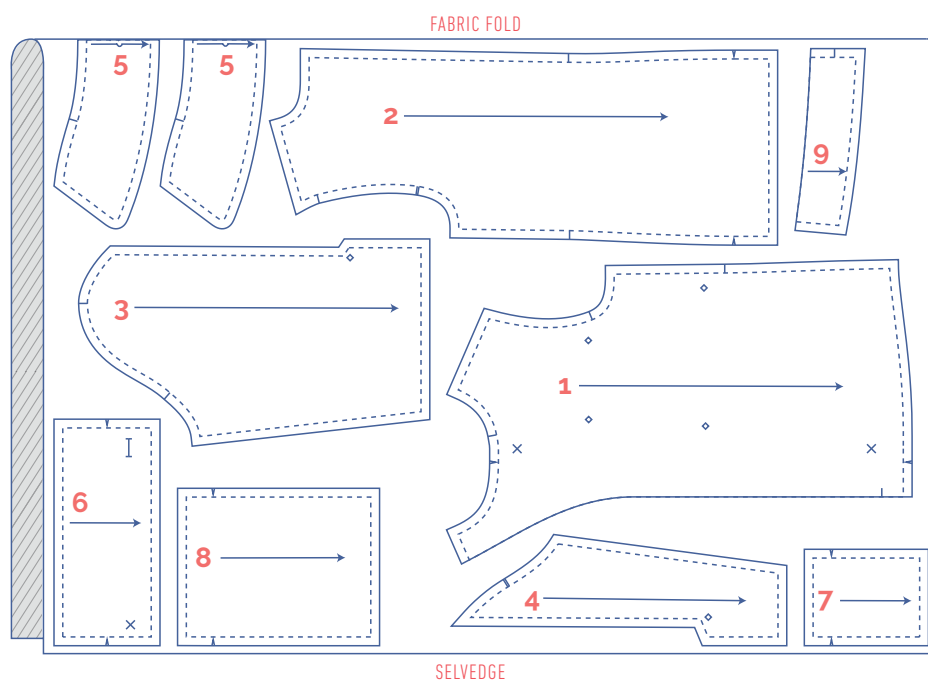


Attach the snaps or (jeans) buttons at the indicated places. Make a button hole in the wrist trim if you're using (jeans) buttons.



# fabric plan for standard fabrics 140 cm wide

for size 2 - 8 y



for size 10 - 14 y

