

## Josie dress by Fibre ⚡ood



# Josie dress by Fibre ⚡ood



32 - 58

The Josie dress is an offshoot or pattern hack of the [Josie top](#). It's been turned into a classic sixties style A-line dress: narrower at the top with a skirt that widens out a bit towards the hem.

This model has remained a hit over the years because every body shape looks just as good in it.

It's the perfect dress for a summer day.

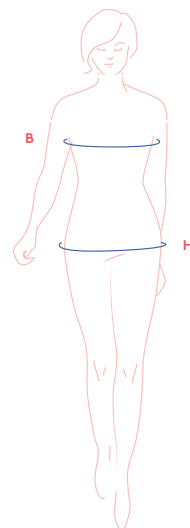


## size chart

size (EU)	32	34	36	38	40	42	44	46	48	50	52	54	56	58
UK	4	6	8	10	12	14	16	18	20	22	24	26	28	30
US	0	2	4	6	8	10	12	14	16	18	20	22	24	26
B (cm)	76	80	84	88	92	96	100	104	110	116	122	128	134	140
H (cm)	86	90	94	97	100	103	106	109	115	120	125	130	135	140

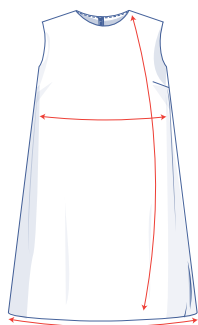
**Bust (B):** measure horizontally around the fullest part of the chest.

**Hip (H):** measure horizontally around the widest part of the lower body.



## finished garment measurements (in cm)

size	32	34	36	38	40	42	44	46	48	50	52	54	56	58
length	87,75	88,5	89	89,5	90	90,5	93,25	94,75	99,5	100,5	101	102	102,75	103,5
1/2 bust measurement	41.75	43.5	45.5	47.25	49.25	51	53	54.75	58.25	61	63.75	66.5	69	71.75
1/2 hem circumference	56.5	58.5	60.5	62.5	64.5	66.5	69	71	74.5	77.25	80.25	83.25	86.25	89.25



Compare the stated lengths to the measured or desired lengths. **Lengthen** or **shorten** the dress by cutting the pattern pieces at the indicated double lines and then spreading the pattern pieces out X cm from each other or overlapping them, where necessary. Make sure that the CF and CB lines and the side seams are always straight.



### IMPORTANT

Adjust the fabric to be used based on these alterations.

## supplies



- Thread
- Iron-on interfacing: max. 45 cm
- Invisible zip: 60 cm
- Fabric: see table

fabric used (in cm) F collection	32	34	36	38	40	42	44	46	48	50	52	54	56	58
striped fabric fabric width 170 cm	120	120	120	125	125	125	130	130	140	140	140	155	220	225

Find out everything you need to know about the Fibre Mood fabric collection and the accompanying fabric plans [here](https://www.fibre mood.com/en/fabrics) or on [www.fibre mood.com/en/fabrics](https://www.fibre mood.com/en/fabrics).

fabric used (in cm) standard	32	34	36	38	40	42	44	46	48	50	52	54	56	58
fabric width 140 cm	125	125	125	125	125	125	145	200	220	220	225	245	250	250

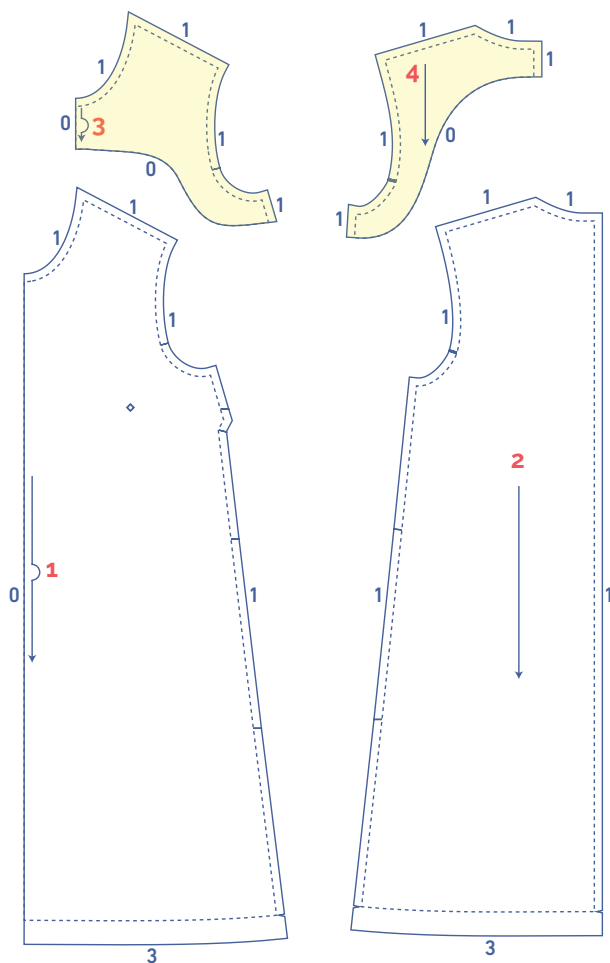
The corresponding fabric plan can be found on the last page of these sewing instructions.

**fabric advice** The fabric choice is largely what determines the look of your A-line dress. If you go for a stiff fabric, then the A-line effect will be more pronounced. If you go for a fabric with a fluid drape, then your dress will have a more billowy effect, and 'cling' just a bit more. Good fabric choices: cotton, linen, jacquard and woollen fabrics or interlock (jersey), etc. Find out everything you need to know about the Fibre Mood fabric collection [here](https://www.fibre mood.com/en/fabrics) or on [www.fibre mood.com/en/fabrics](https://www.fibre mood.com/en/fabrics).



## pattern pieces & seam allowances (in cm)

To sew the garment as described in the instructions, you must draw the illustrated seam allowances around the paper pattern pieces before cutting them out.



- 1. front: 1x on fabric fold
- 2. back: 2x
- 3. front facing: 1x on fabric fold
- 4. back facing: 2x

**IMPORTANT**

The pieces highlighted in light yellow have iron-on interfacing attached to the wrong side.

**Mark key points on the pattern piece using a basting thread:**

- Mark the tip of the dart/dart intake by sewing through the centre of the (◇) with needle and basting thread (↱).

**Indicate crucial points on the outline of the pattern:**

- Nick the pattern paper and fabric at the places where a single vertical line (I) and double vertical lines (II) are indicated.
- Cut a small corner out of the fabric at a V symbol or on the finished hemline.
- Cut a small corner (V notch) out of the pieces that lie on the fabric fold to mark the middle of these pieces.



# sewing instructions



The method used to finish sewing the garment depends on the fabric used. The pieces are always sewn together with the right sides of the fabric matching exactly, unless stated otherwise.

FP front panel

BP back panel

CB centre back

LBP left back panel

RBP right back panel

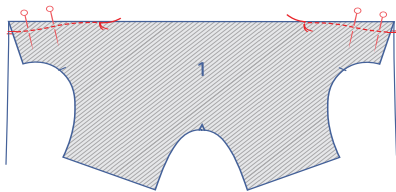


right side

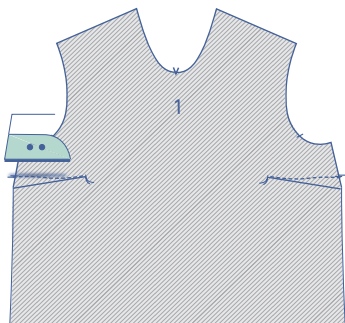


wrong side

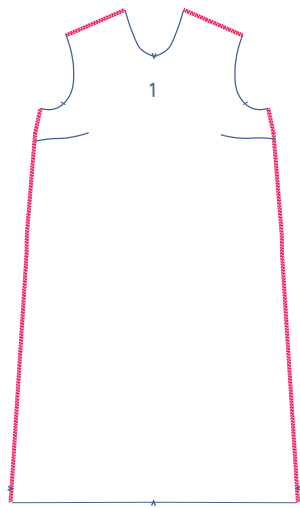
**1**



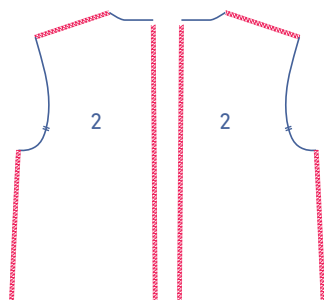
Fold the nicks on the side seam of the front (1) in half with the right side of the fabric facing inwards. From the dart/dart intake, stitch in a slightly curved line towards the basting thread. Stitch up to and just past the basting thread, so that you've sewn past the fabric. Snip the threads and make a knot.



Turn the front over so that the wrong side is facing up. Press the dart/dart intake over and down.

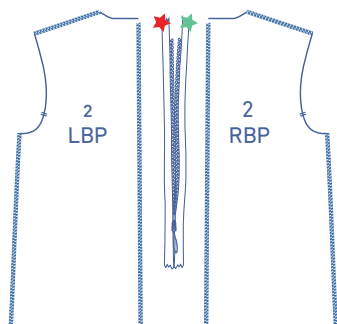


Use an overlock stitch to finish the shoulder and side seams.

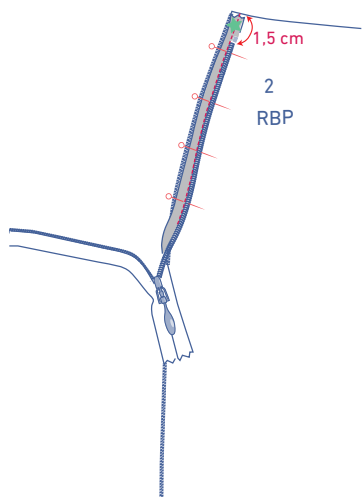


**2**

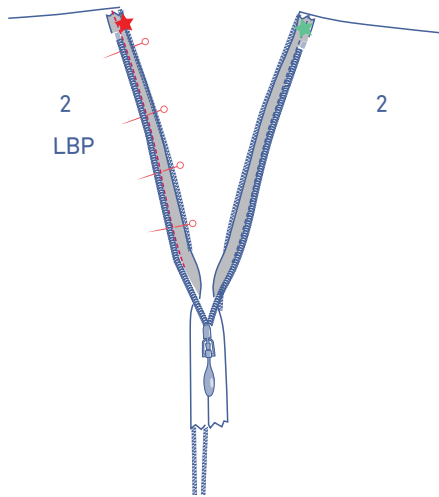
Finish the shoulder, side and CB seams of the back (2) using an overlock stitch.



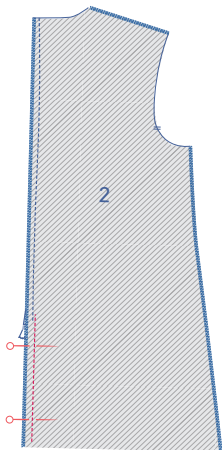
Set the zip and both back pieces in front of you with the right sides facing up.



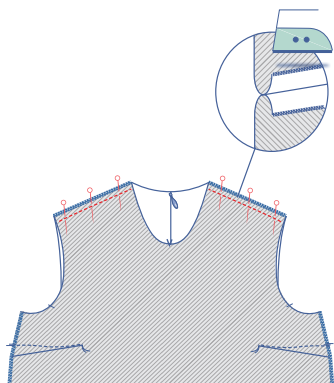
Fold the zip tape marked with a green star over to the right so that the right sides of the zip tape and the RBP are facing. Sew in place using an invisible zipper foot. Sew up to where the presser foot hits the zip pull.



Fold the other zip tape marked with a red star over to the left so that the right sides of the zip tape and the LBP are facing. Sew in place using the invisible zipper foot. Sew up to where the presser foot hits the zip pull.

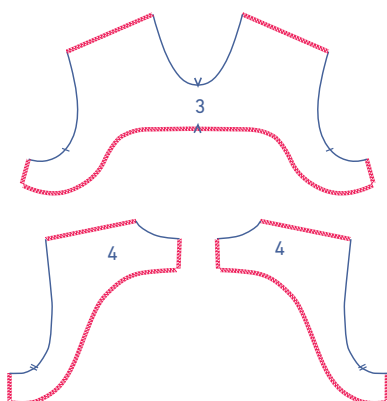


Close the zip and fold both back pieces together with the right sides of the fabric facing inwards. Sew the remaining part of the CB seam. Start sewing just next to and above the previous stitching (= from where you just sewed the zip in place). Use a narrow presser foot for this. Press the seam allowance open.



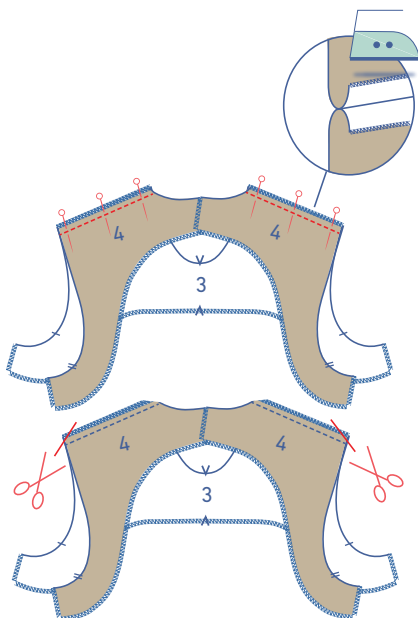
### 3

Pin and sew the shoulder seams. Press the seam allowance open.

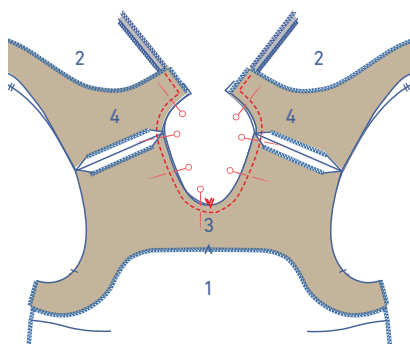


### 4

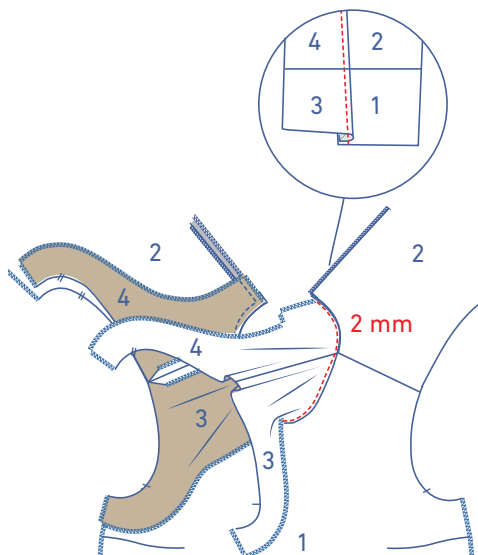
Overlock the shoulder, side seams and the bottom of the front facing (3) and the shoulder, side and CB seams and the bottom of the back facing (4).



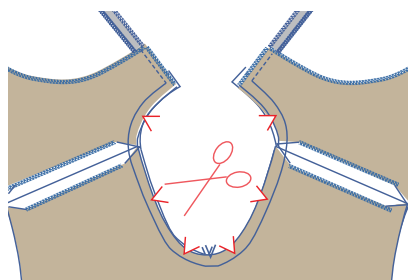
Sew the shoulder seams of the facing and press the seam allowance open. Snip off the seam allowance at the ends.



Pin and sew the neckline of the facing to the neckline of the top, making sure that the V notches and shoulder seams match.

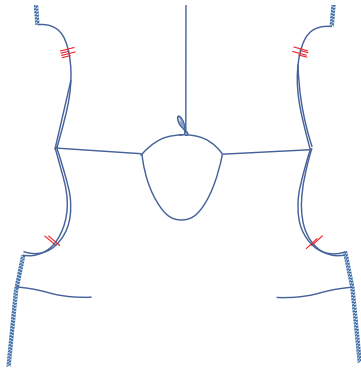


Fold the facing and the seam allowance over towards the facing. At 2 mm from the seam, sew through all layers (facing + underlying seam allowance) of the facing.



If you'd like a nicer curve to your neckline, you can snip notches out of the neckline's remaining seam allowance.

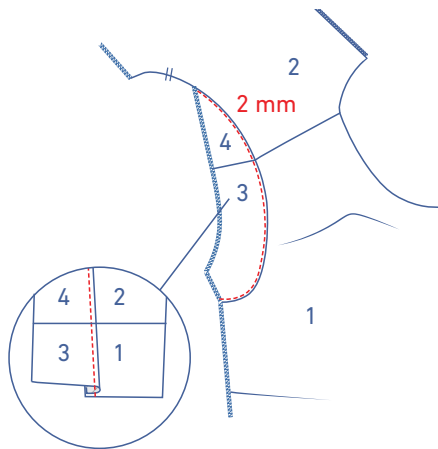
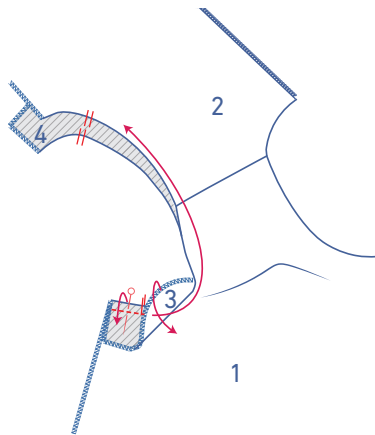




Fold the facing over to the wrong side of the top.

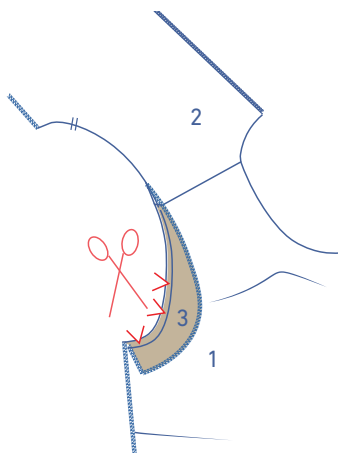
## 5

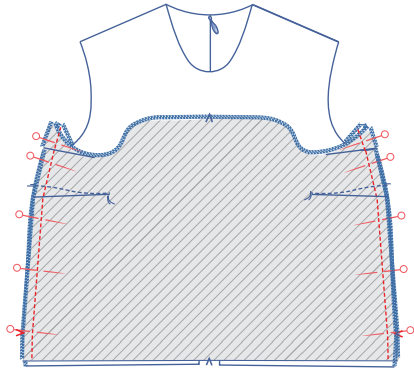
Fold the right side of the facing so that it's facing the right side of the armholes. Be sure that the nicks and shoulder seams match. Sew the armholes together.



Fold the facing and the seam allowance over towards the facing. At 2 mm from the seam, sew through all layers (facing + underlying seam allowance) of the facing. Always sew off as far as you can. Once done, do the same for the other side of the armhole.

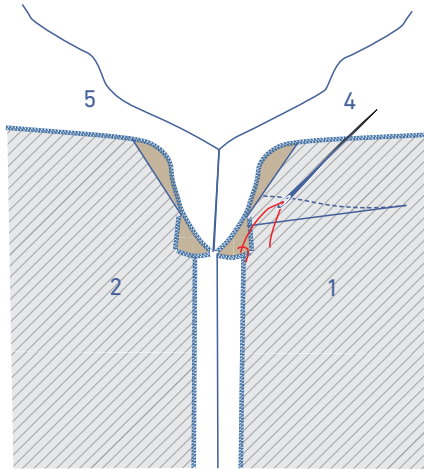
Depending on your preference, snip notches out of the remaining seam allowance.





## 6

Pin and sew the side seams of the F + front facing and the back + back facing. Press the seams open. The facing should still be folded up towards the top of the dress.



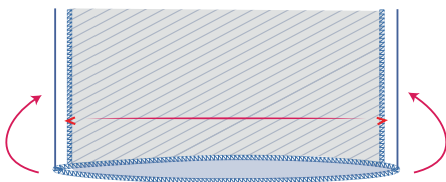
Fold the facing down.

Sew or stitch the seam allowance of the facing's side seams to the top's side seams, and sew or stitch the seam allowance of the facing's CB to the seam allowance of the top's CB.

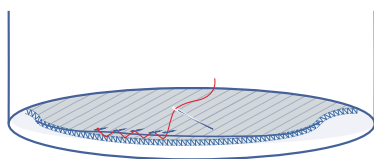


## 7

Finish the hem using an overlock stitch.



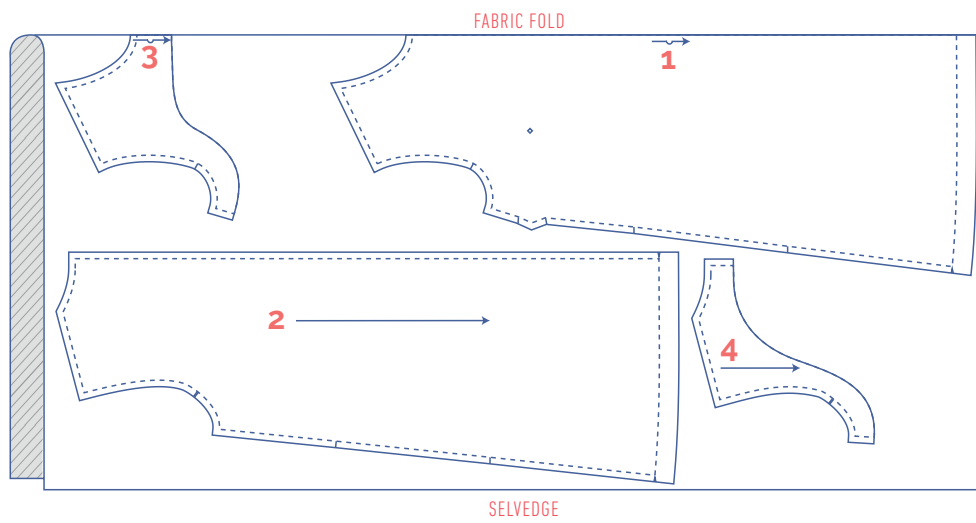
Press the hem allowance up to the V notch.



Sew the hem allowance in place.

# fabric plan for fabric 140 cm wide

for size 32 - 44



for size 46 -58

