

Josie boxy top by Fibre ⚡ood

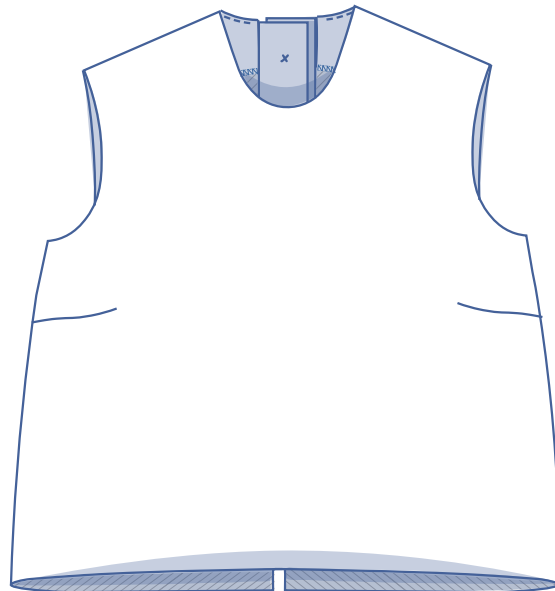


Josie boxy top by Fibre ood



32 - 48

The Josie boxy top is an offshoot/pattern hack of the [Josie top](#). As the name suggests, this top is a shorter, looser version of the basic model. Pair it with a skirt or a pair of high-waisted trousers. And there's even a second pattern hack, the A-line dress. You can check out the pattern for sale [here](#).

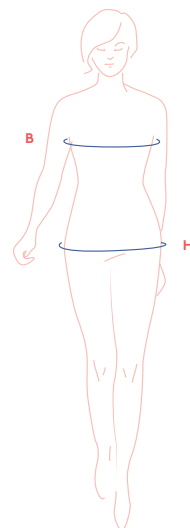


size chart

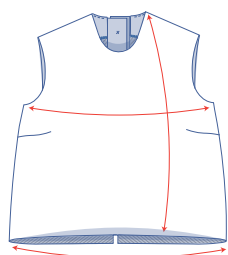
size (EU)	32	34	36	38	40	42	44	46	48
UK	4	6	8	10	12	14	16	18	20
US	0	2	4	6	8	10	12	14	16
B (cm)	76	80	84	88	92	96	100	104	110
H (cm)	86	90	94	97	100	103	106	109	115

Bust (B): measure horizontally around the fullest part of the chest.

Hip (H): measure horizontally around the widest part of the lower body.



measurements(in cm)



size	32	34	36	38	40	42	44	46	48
length	48.25	48.5	48.75	49	49.25	49.5	49.75	50	50.5
1/2 bust measurement	43.25	45	47	48.75	50.75	52.5	54.5	56.25	59.75
1/2 hem circumference	43.25	45.25	47.25	49	51	52.75	54.5	56.25	59.25

Compare the stated lengths to the measured or desired lengths. **Lengthen** or **shorten** the top by cutting the pattern pieces at the indicated double lines and then spreading the pattern pieces out X cm from each other or overlapping them, where necessary. Make sure that the CF and CB lines and the side seams are always straight.



IMPORTANT

Adapt the use of fabric based on these alterations.

supplies



- Thread
- Iron-on interfacing: max. 60 cm
- Buttons (Ø 1.1 cm): 5
- Fabric: see table

fabric used (in cm) F collection	32	34	36	38	40	42	44	46	48
jacquard fabric width 148 cm	80	80	85	90	90	90	90	95	95

Find out everything you need to know about the Fibre Mood fabric collection and the accompanying fabric plans [here](https://www.fibre mood.com/en/fabrics) or on www.fibre mood.com/en/fabrics

fabric used (in cm) standard	32	34	36	38	40	42	44	46	48
fabric width 140 cm	80	80	85	90	90	90	90	95	95

The corresponding fabric plan can be found on the last page of these sewing instructions.

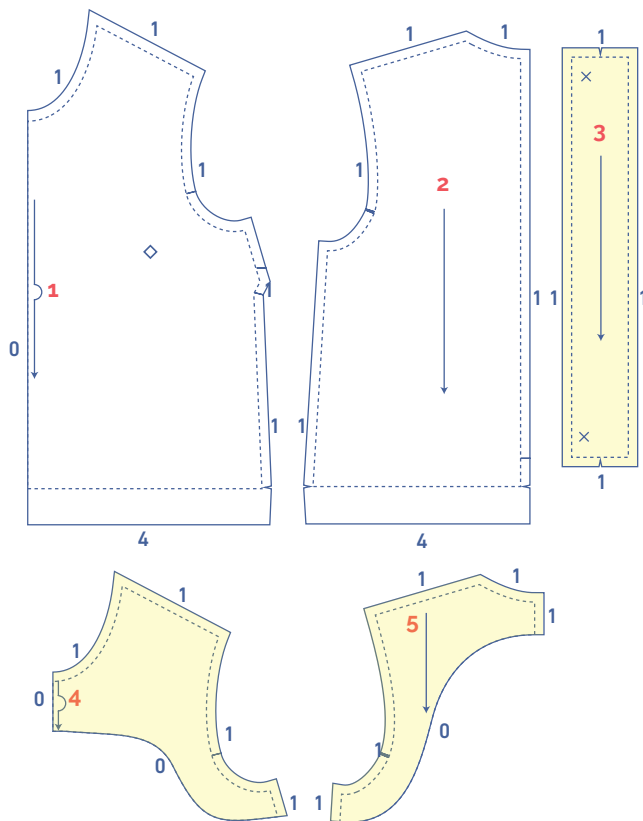
fabric advice



Whether you make the Josie top short in a stiff fabric or one with a fluid drape will depend on your body shape and the look you're going for. Women with a 'curvy' body shape ought to retain those soft lines and go for fabric textures that aren't too bulky or heavy. Fabrics that 'drape', such as wool, silk and viscose blends are the most flattering options. Women with a 'straight' body shape should go for stiffer fabrics that retain their shape and create clean, straight lines, for example a jacquard, cotton, linen, brocade, etc. Look [here](#) to find more on Josie top short that's perfect for your body shape. Find out everything you need to know about the Fibre Mood fabric collection [here](#) or on www.fibre mood.com/en/fabrics.

pattern pieces & seam allowances (in cm)

To sew the garment as described in the instructions, you must draw the illustrated seam allowances around the paper pattern pieces before cutting them out.



1. front: 1x on fabric fold
2. back: 2x
3. buttons/buttonhole placket: 2x
4. front facing: 1x on fabric fold
5. back facing: 2x

IMPORTANT

The pieces highlighted in light yellow have iron-on interfacing attached to the wrong side.

Mark key points on the pattern piece using a basting thread:

- Mark the tip of the dart/dart intake by sewing through the centre of the (◇) with needle and basting thread (↱).
- Mark the location of the buttons by sewing through the centre of the (X) with needle and basting thread (↱).

Indicate crucial points on the outline of the pattern:

- Nick the pattern paper and fabric at the places where a single vertical line (I) and double vertical lines (II) are indicated.
- Cut a small corner out of the fabric at a V symbol or on the finished hemline.
- Cut a small corner (V notch) out of the pieces that lie on the fabric fold to mark the middle of these pieces.

sewing instructions



The method used to finish sewing the garment depends on the fabric used. The pieces are always sewn together with the right sides of the fabric matching exactly, unless stated otherwise.

F front

B back

RF right front

LF left front

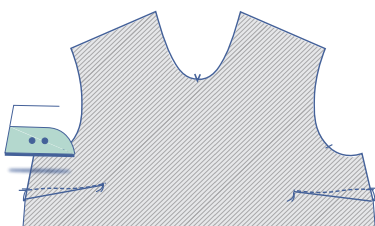
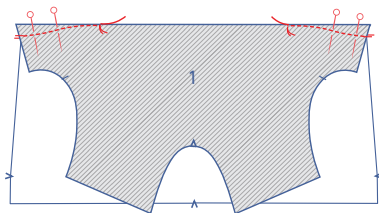
RBP right back piece

LBP left back piece

 right side

 wrong side

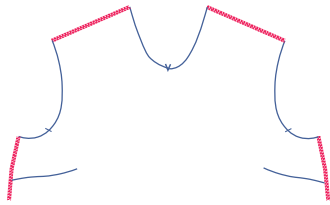
 iron-on interfacing



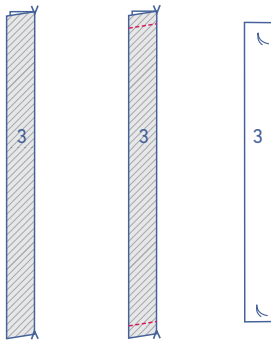
1

Fold the nicks on the side seam of the front (1) in half with the right side of the fabric facing inwards. From the dart/dart intake, stitch in a slightly curved line towards the basting thread. Stitch up to and just past the basting thread, so that you've sewn past the fabric. Snip the threads and make a knot.

Turn the front over so that the wrong side is facing up. Press the dart allowance down.

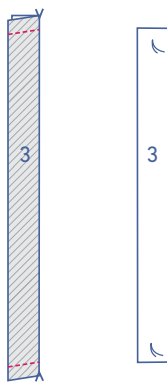


Use an overlock stitch to finish the shoulder and side seams.

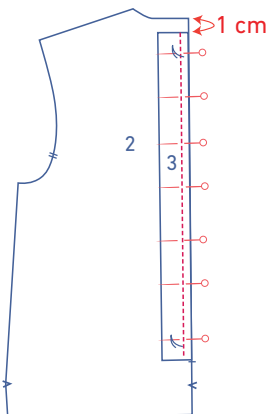


2

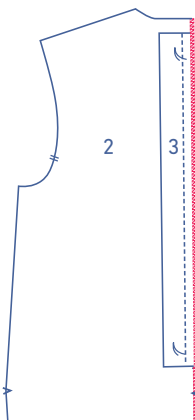
Fold the buttons/buttonhole placket (3) in half lengthwise with the right side facing inwards.



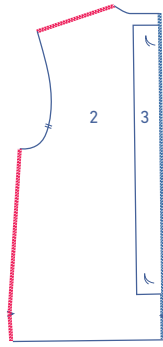
Stitch the top and bottom. Turn inside out.



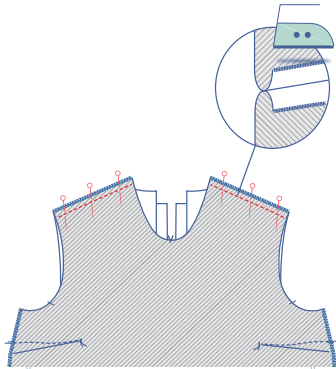
Pin and sew the raw edges of the buttons/buttonhole placket to the CB seam of the back (2). The top of the placket should be 1 cm under the edge, while the bottom should line up with the nick.



Finish the edges together using an overlock stitch.

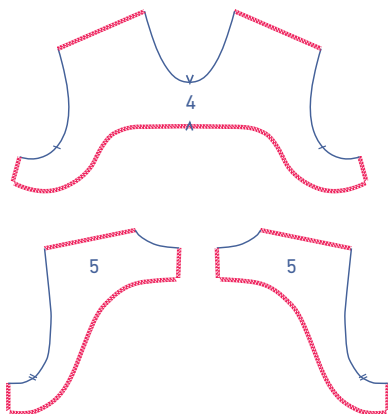


Finish the shoulder and side seams of the back using an overlock stitch.



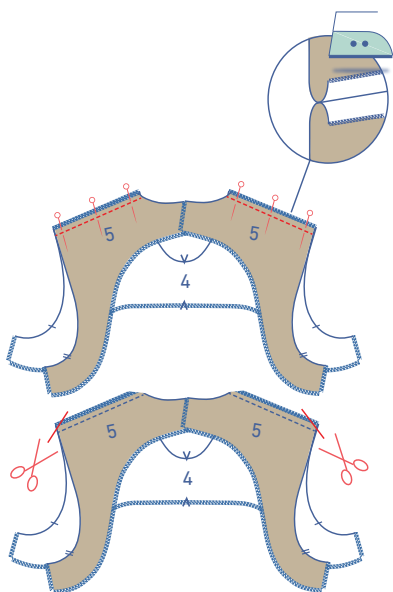
3

Pin and sew the shoulder seams. Press the seam allowance open.

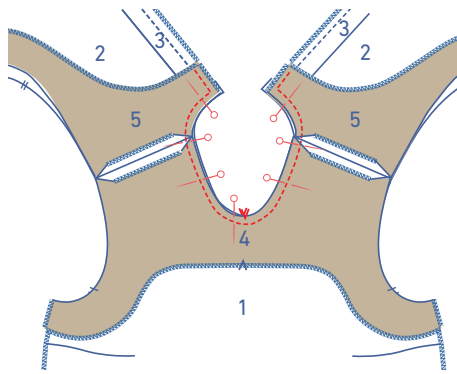


4

Overlock the shoulder, side seams and the bottom of the front facing (4) and the shoulder, side and CB seams and the bottom of the back facing (5).

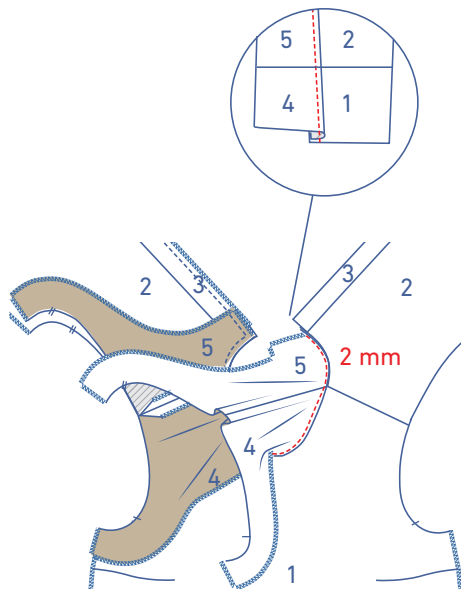


Sew the shoulder seams of the facing and press the seam allowance open. Snip off the seam allowance at the ends.

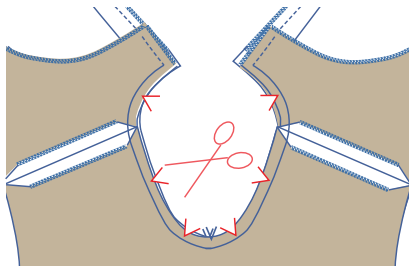


Pin and sew the neckline of the facing to the neckline of the top, making sure that the V notches and shoulder seams match.

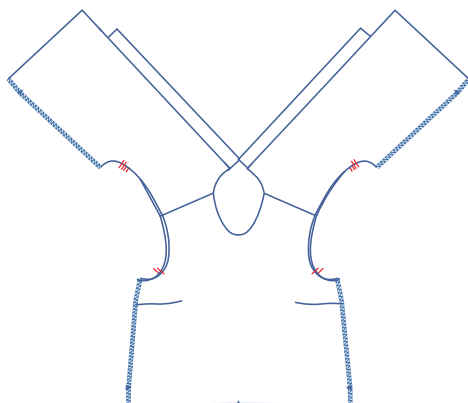
Stitch the CB seam. The fold line of the buttons/buttonhole placket should be angled in the direction of the armholes.



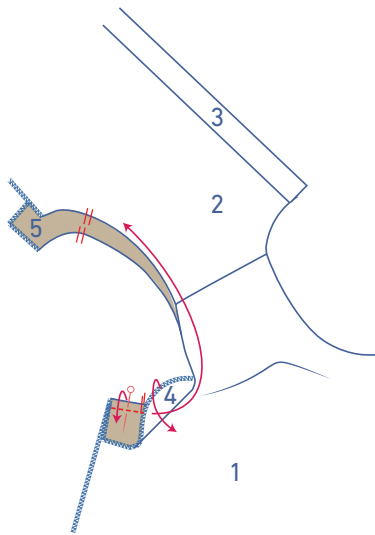
Fold the facing and the seam allowance over towards the facing. At 2 mm from the seam, sew through all layers (facing + underlying seam allowance) of the facing.



If you'd like a nicer curve to your neckline, you can snip notches out of the neckline's remaining seam allowance.

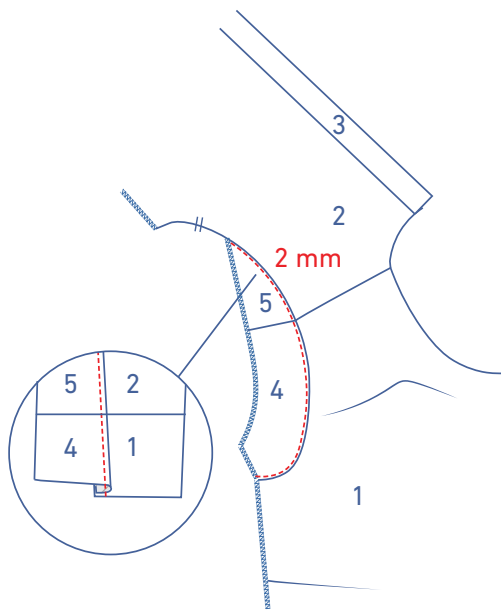


Fold the facing over to the wrong side of the top.

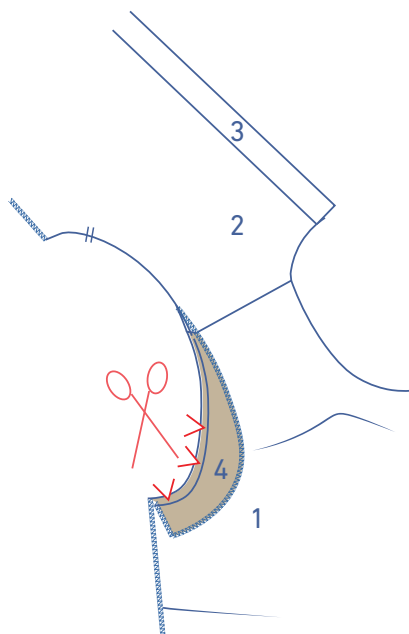


5

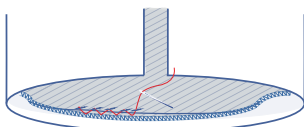
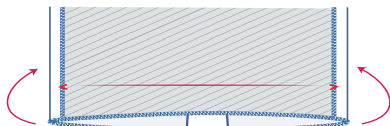
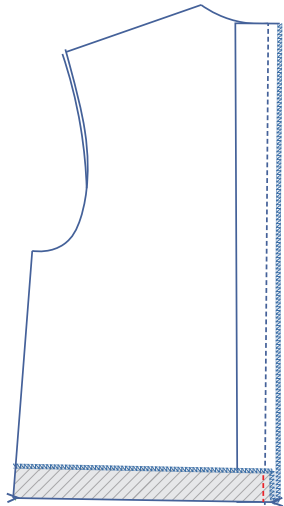
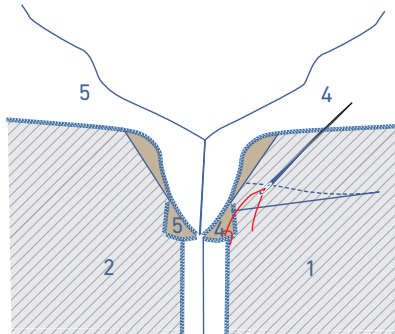
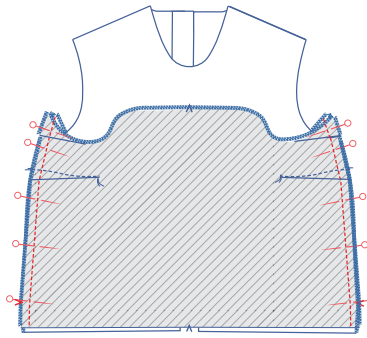
Fold the right side of the facing so that it's facing the right side of the armholes. Be sure that the nicks and shoulder seams match. Sew the armholes together.



Fold the facing and the seam allowance over towards the facing. At 2 mm from the seam, sew through all layers (facing + underlying seam allowance) of the facing. Always sew off as far as you can. Once done, do the same for the other side of the armhole.



Fold the facing over to the side. Depending on your preference, you can snip notches out of the remaining seam allowance.



6

Pin and sew the side seams of the F + front facing and the back + back facing. Press the seams open. The facing should still be folded up towards the top of the dress.

Fold the facing down.

Sew or stitch the seam allowance of the facing's side seams to the top's side seams.

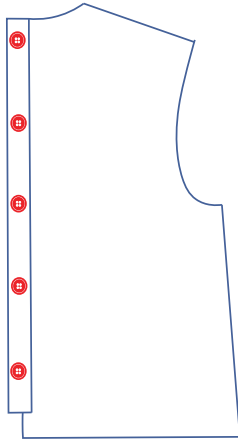
7

Finish the hem using an overlock stitch.

Fold the hem allowance towards the right side of the top, up to the V notch and CB. Sew the short sides in place. Now, turn back right side out.

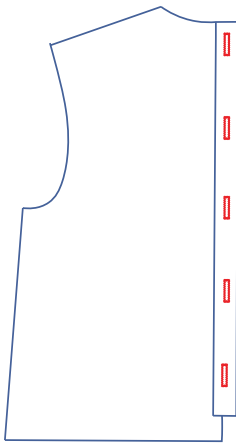
Press the hem allowance over to the V notches.

Sew in place.



8

Sew the buttons on. The location of the top and bottom-most buttons have been marked on the pattern for you. Divide the distance evenly between the two to determine the locations of the other buttons.



Make the buttonholes based on the location of the buttons. The button should line up with the top 1/3 of the buttonhole.

fabric plan

1. for standard fabrics 140 cm wide

for size 32 - 48

