

Dixie by Fibre ⚡ood

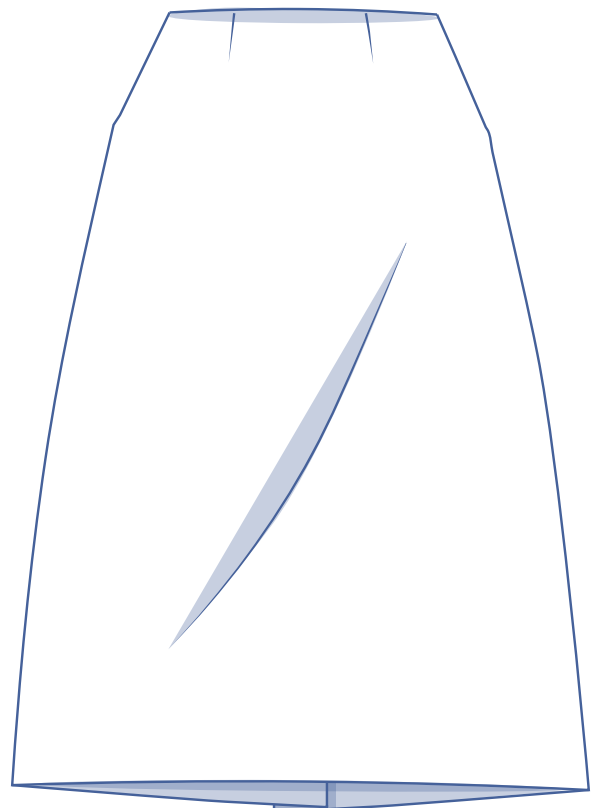
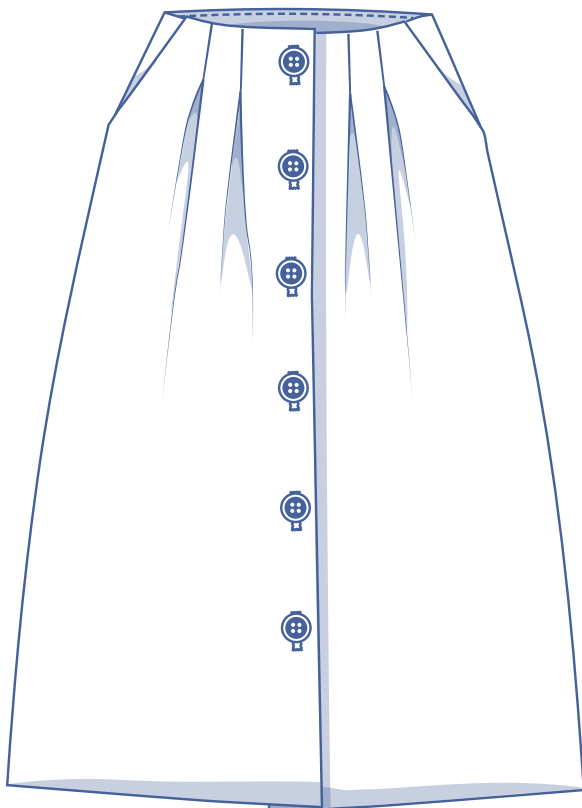


Dixie by Fibre Mood



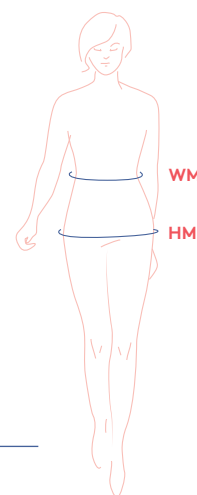
32 - 58

Long skirts will be sticking around on the fashion scene for this season too. Dixie has facing and a long row of buttons down the front of the skirt to close it. The skirt also features convenient side pockets. Not the biggest fan of long ankle length skirts? No problem. You can easily play with the length of the pattern, turning it into a trendy calf length skirt or perhaps something a touch shorter. Knee length is also an option. You can find out all about the right length for your body shape [here](#).



size chart

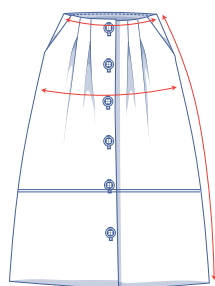
size (EU)	32	34	36	38	40	42	44	46	48	50	52	54	56	58
UK	4	6	8	10	12	14	16	18	20	22	24	26	28	30
US	0	2	4	6	8	10	12	14	16	18	20	22	24	26
WM (cm)	66	68	70	74	78	82	84	88	94.5	101	107.5	114	120.5	127
HM (cm)	86	90	94	97	100	103	106	109	115	120	125	130	135	140



Waist (WM): measure horizontally at the narrowest point of the body.

Hip (HM): measure horizontally around the widest part of the lower body.

finished garment measurements (in cm)



size	32	34	36	38	40	42	44	46	48	50	52	54	56	58
side length	94.75	95	95.25	95.5	95.75	96.25	96.5	96.75	98	98.25	98.75	99	99.25	99.5
1/2 waistline measurement*	32.5	33.5	34.5	36.5	38.5	40.5	41.5	43.5	46.75	50	53.25	56.5	59.75	63
1/2 hip measurement*	47.25	48	48.75	50.5	52	53.5	54.5	56	58.75	61.25	64	66.5	69.25	71.75

* Pleating allowance not included in the calculations.

Compare the stated lengths to the measured or desired lengths. **Lengthen** or **shorten** the skirt by cutting the pattern pieces at the indicated double lines and then spreading the pattern pieces out X cm from each other or overlapping them where needed. Make sure that the CF and CB lines and the side seams are always straight.



IMPORTANT

Adjust the fabric to be used based on these alterations.

supplies



- Thread
- Iron-on interfacing: max. 105 cm
- Buttons (Ø 2.5 cm): 6
- Fabric: see table

fabric used (in cm) F collection	32	34	36	38	40	42	44	46	48	50	52	54	56	58
khaki-coloured fabric fabric width 140 cm	190	195	205	205	205	210	215	220	225	225	225	225	225	240
russet-coloured fabric fabric width 140 cm	190	195	205	205	205	210	215	220	225	225	225	225	225	240

Comprehensive information about the fabrics in the Fibre Mood collection along with the accompanying fabric plans can be found [here](https://www.fibremood.com/en/fabrics) or on www.fibremood.com/en/fabrics.

fabric used (in cm) standard	32	34	36	38	40	42	44	46	48	50	52	54	56	58
fabric width 140 cm	190	195	205	205	205	210	215	220	225	225	225	225	225	240

The corresponding fabric plan can be found on the last page.

fabric advice



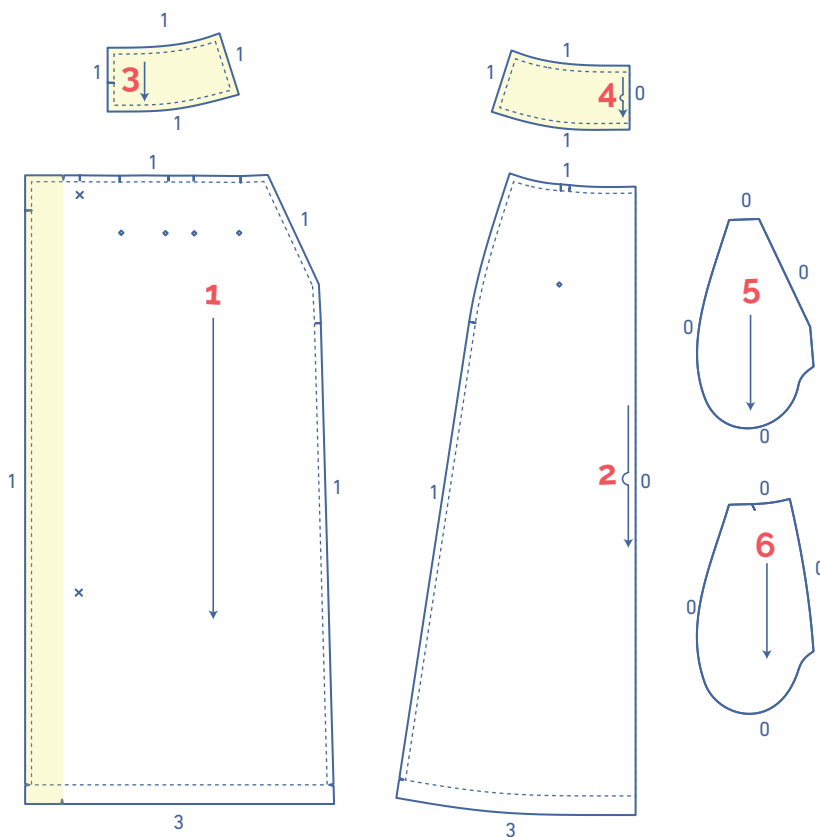
The Dixie skirt can be sewn in a fabric with a fluid drape, such as a crepe (made of viscose, polyester or wool), or in a stiff fabric, such as a cotton (double gauze, poplin, cotton satin, stretch cotton, denim, etc.) or a mix with cotton, linen, etc. The fabric choice will determine whether your Dixie will be a graceful, airy skirt, or more of a 'statement' skirt.

Curvy figures should go for fabrics with a fluid drape, in contrast with straight body shapes that look nicer in stiffer fabrics. When it comes to prints you can also take it in any direction: stripes, a floral or check pattern or a plain fabric in a spicy, warm colour or a shade of pastel.

Find out all the facts about the Fibre Mood fabric collection [here](https://www.fibre mood.com/en/fabrics) or on www.fibre mood.com/en/fabrics.

pattern pieces & seam allowances (in cm)

To sew the garment as described in the instructions, you need to draw the illustrated seam allowances around the paper pattern pieces before cutting them out.



1. front: 2x
2. back: 1x on fabric fold
3. waist facing front: 2x
4. waist facing back: 1x on fabric fold
5. inner pocket lining: 2x
6. pocket: 2x

IMPORTANT

The pieces highlighted in light yellow have iron-on interfacing attached to the wrong side.

Mark the following key points on the pattern piece using a basting thread:

- Mark the end of the dart/dart intake and the pleats with a basting thread (↪) by using a needle and thread to mark the middle of the (◇).
- Mark the position of the buttons with a basting thread (↪) by using a needle and thread to indicate the middle of the (X).

Indicate crucial points on the outline of the pattern:

- Nick the pattern paper and fabric at the places with a single vertical line (|).
- Cut a small corner out of the fabric where a V symbol has been made and on the finished hemline.
- Cut a small corner (V notch) out of the pieces that lie on the fabric fold to mark the middle of these pieces.

sewing instructions



The method used to finish sewing the garment depends on the fabric used. The pieces are always sewn together with the right sides of the fabric matching exactly, unless stated otherwise.

F front

B back

CF centre front

CB centre back



right side



wrong side

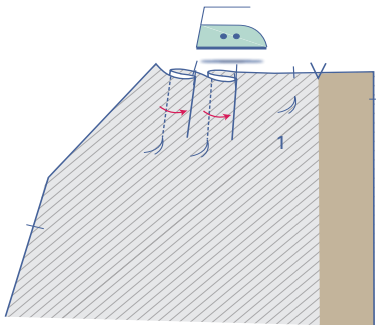
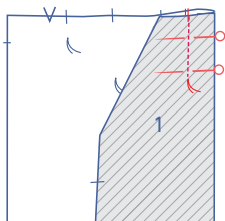


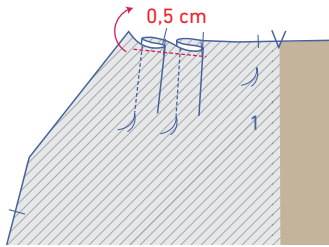
iron-on interfacing

1

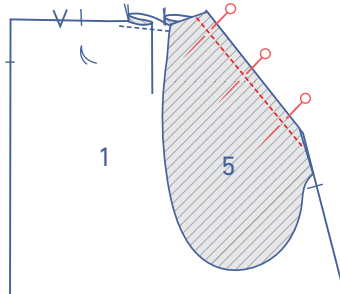
Shape the pleats of the front (1) by matching the nicks of the waist seam to each other with the right side of the fabric facing inwards. Sew the pleats in place vertically up to the basting thread.

Turn the front over so that the back side is facing up. Press the pleat allowance towards the CF.

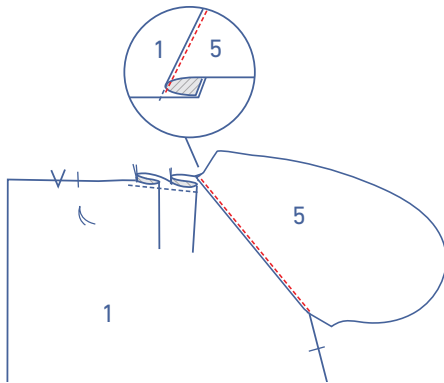




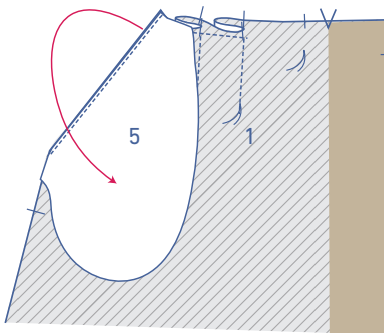
Sew the pleats together at 0.5 cm from the waist seam.



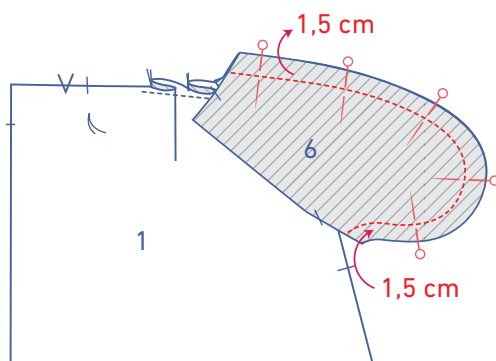
Pin the slanted side of the inner pocket lining (5) and the front together and sew in place.



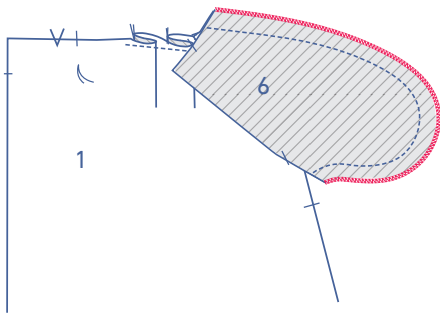
Fold the inner pocket lining and the seam allowance out of the way and sew the inner pocket lining into place at 2 mm from the seam through all layers of fabric (inner pocket lining + underlying seam allowance).



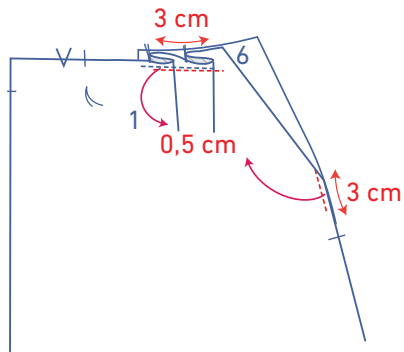
Fold the pocket all the way over to the wrong side.



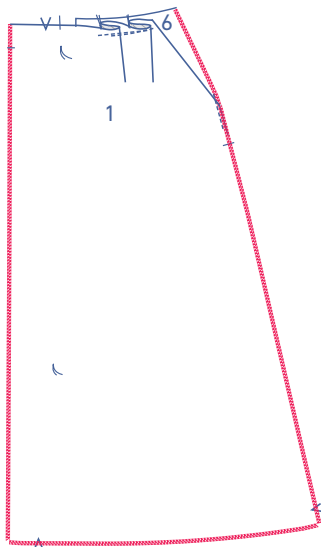
Pin the contours of the bottom of the pocket and the inner pocket lining together. Sew into place at 1.5 cm.



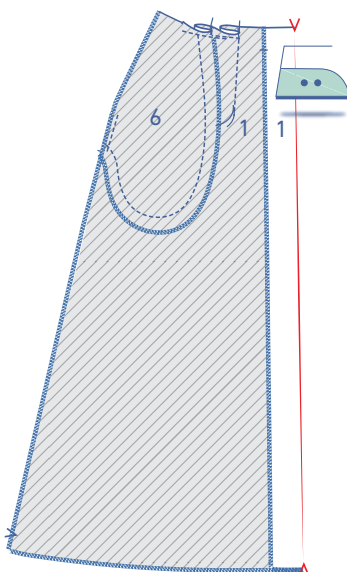
Finish the raw edges of the pocket pieces together using an overlock stitch.



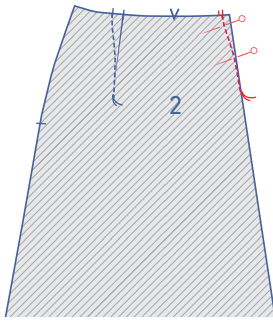
Fold the pocket over so that it's in the right place. Sew the pocket pieces to the front at the top and side, 0.5 cm away from the raw edges.



Finish the side seams, the hem and CF using an overlock stitch.

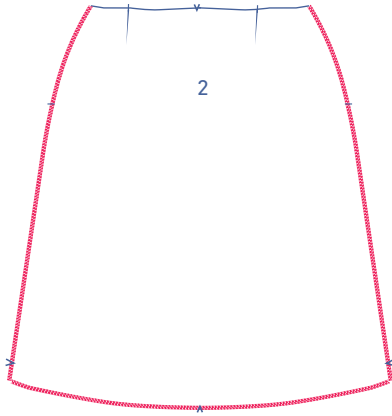


Press the shaped facing of the front over to the wrong side to the V notches at the top and bottom.

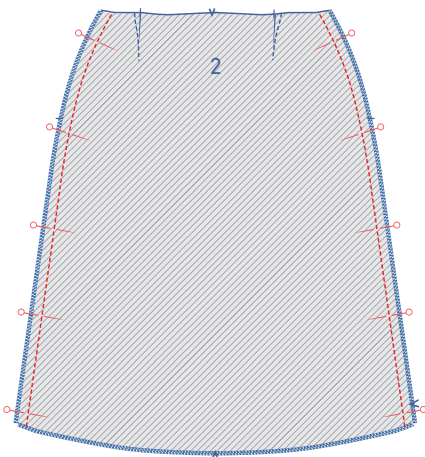


2

Fold the back (2) in half with the right side of the fabric turned inward. Precisely match the nicks at the waist seam. Sew the dart off towards the basting thread. Press the darts intake toward the CB.

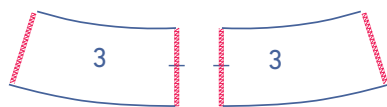


Finish the side seams and the hem using an overlock stitch.



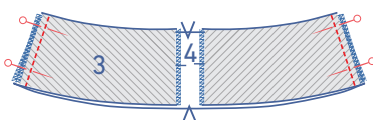
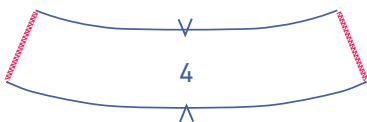
3

Pin and sew the side seams of the front and back. Press the seams open.

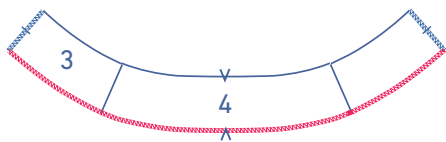


4

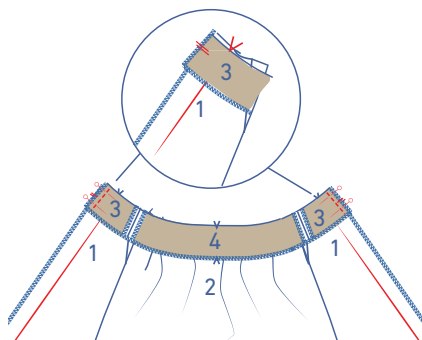
Finish the short sides of the front waist facing pieces (3) and the back waist facing (4) using an overlock stitch.



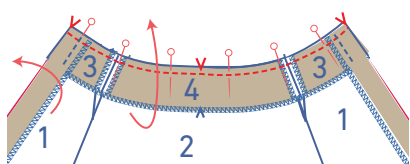
Pin and sew the sides seams (for the front, that's the side without the nick) of the front waist facing and the back waist facing. Press the seams open.



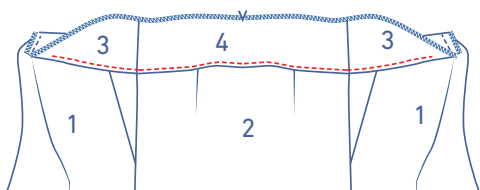
Finish the bottom of the facing using an overlock stitch.



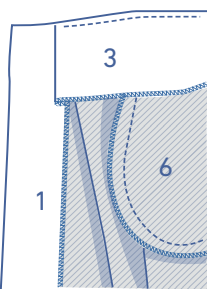
Pin and sew the short side of the front waist facing to the side of the shaped facing with the nicks matching (both for the LF and RF). Press the seam allowance in one direction.



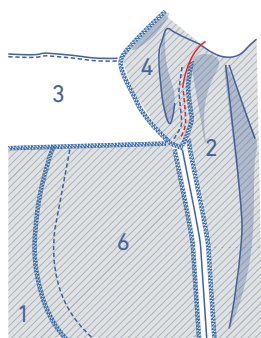
Now press the shaped facing of the CF to the right side of the skirt at the V notches. Pin and sew the unfinished top of the waist facing to the top of the skirt (making sure that the side seams and the V notches at the CB are matching).



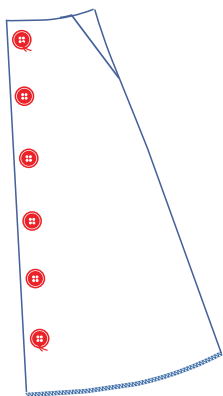
Fold the waist facing and the underlying seam allowance up and sew the waist facing into place 2 mm away from the seam and through all layers of fabric (waist facing + underlying seam allowance). Sew this as far as you can.



Turn the shaped facing and the waist facing back to the wrong side of the front.

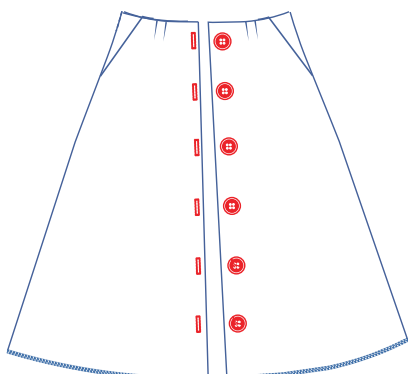


Stitch the skirt's seam allowances and facing together to firmly secure the waist facing.



5

Sew the buttons on the RF at the indicated places. The location of the top and bottom-most buttons have been indicated on the pattern for you. Determine the position of the other buttons by making sure that there is an equal amount of space between each button.



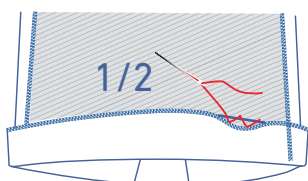
Make vertical button holes on the RF based on the position of the buttons on the LF.



6



Press the hem allowance over to the V notch.



Sew the seam allowance in place.

fabric plan for fabric 140 cm wide

for size 32 - 58

