

Charlie by Fibre ⚡ood



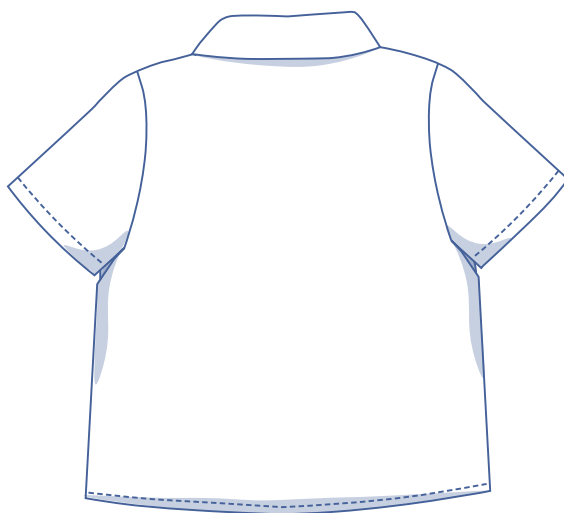
Charlie by Fibre Mood



1 - 18 months

2 - 12 year

Charlie is a short sleeve, airy shirt for children with a collar and patch pockets. The straight fitting model is perfect for your little rascal's first spring. The Charlie can be made in a classic check fabric, a plain fabric, or a fabric with a playful print.

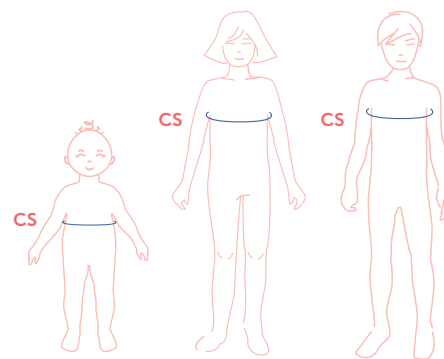


size chart

size (months)	1m	3m	6m	9m	12m	18m
CS (cm)	45	46	47	48	49	50

size (year)	2y	3y	4y	5y	6y	8y	10y	12y
CS (cm)	52	54	56	58	60	64	68	72

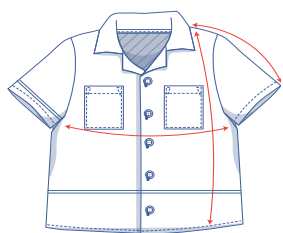
Chest (CS): measure horizontally around the fullest part of the chest.



measurements (in cm)

size	1m	3m	6m	9m	12m	18m	2y	3y	4y	5y	6y	8y	10y	12y
length	24.5	26.5	28.5	30.5	32.5	34.5	38.25	40.25	42.25	43.25	44.25	50.5	54.5	58.75
1/2 bust	27	28	29	30	31	32	32	33	34	35	36	39	41	43
sleeve length*	14.75	15.5	16.25	16.75	17.5	18.25	20.5	22	23.5	24.75	26	28.75	31.5	34.25

* Includes the shoulder length.



Compare the stated lengths to the measured or desired lengths. **Lengthen** or **shorten** the shirt and/or the sleeves by cutting the pattern pieces at the indicated double lines and then spreading the pattern pieces out X cm from each other or overlapping them where needed. Make sure that the CF and CB lines and the side seams are always straight.



IMPORTANT

Adjust the fabric to be used based on these alterations.

supplies



- Thread
- Iron-on interfacing: max. 65 cm
- Buttons (Ø 1.1 cm): 4 (1m - 6y), 5 (8 - 10y), 6 (12y)
- Fabric: see table

fabric used (in cm) F collection	1m	3m	6m	9m	12m	18m	2y	3y	4y	5y	6y	8y	10y	12y
green and white check fabric fabric width 150 cm	50	50	55	55	55	60	65	65	70	70	75	85	90	95
botanical print fabric fabric width 140 cm	50	50	55	55	55	60	65	65	70	75	75	85	90	95

Comprehensive information about the fabrics in the Fibre Mood collection along with the accompanying fabric plans can be found [here](https://www.fibre mood.com/en/fabrics) or on www.fibre mood.com/en/fabrics.

fabric used (in cm) standard	1m	3m	6m	9m	12m	18m	2y	3y	4y	5y	6y	8y	10y	12y
fabric width 140 cm	50	50	55	55	55	60	65	65	70	75	75	85	90	95

The corresponding fabric plan can be found on the last page.

fabric advice



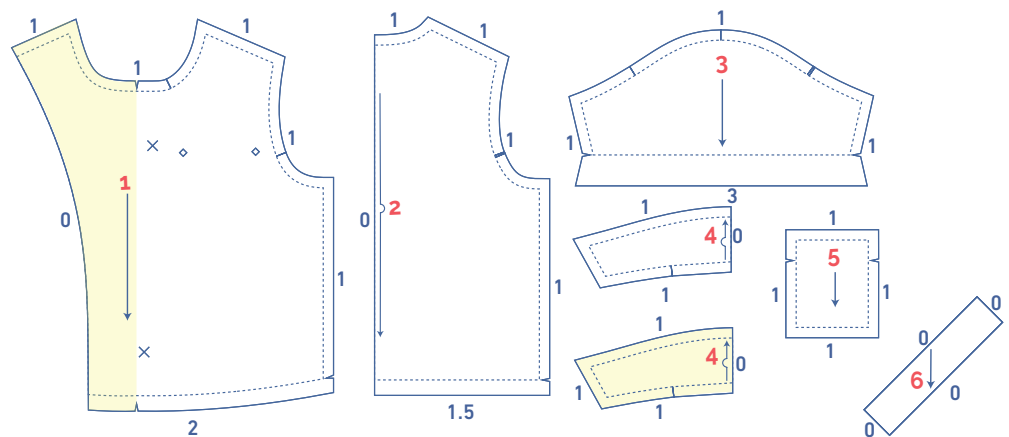
A cotton weave (such as poplin, stretch cotton, denim, twill, etc.) works best for this shirt. Cotton is a sturdy fibre that easily absorbs moisture and is easy to dye or print. The dye penetrates deep into the fabric meaning that it will retain its colour for quite some time. Cotton breathes well and is easy to maintain.

Viscose is also an option. Like cotton, viscose is a versatile material, it's a breathable fabric that absorbs moisture well. Moreover, viscose is incredibly soft against the skin making it really comfortable to wear. Viscose is slightly less easy to care for than cotton: it's not suitable for washing or ironing at higher temperatures. Find out all the facts about the Fibre Mood fabric collection [here](https://www.fibreemotion.com/en/fabrics) or on www.fibreemotion.com/en/fabrics.

finished garment measurements (in cm)

To sew the garment as described in the instructions, you need to draw the illustrated seam allowances around the paper pattern pieces before cutting them out.

1. front: 2x
2. back: 1x at fabric fold
3. sleeve: 2x
4. collar: 2x at fabric fold
5. pocket: 2x
6. neck bias tape: 1x on the bias to the grain, you'll need to draw this pattern part yourself. Draw a rectangle with the following measurements (in cm):



size	1m	3m	6m	9m	12m	18m	2y	3y	4y	5y	6y	8y	10y	12y
height	3.5	3.5	3.5	3.5	3.5	3.5	3.5	3.5	3.5	3.5	3.5	3.5	3.5	3.5
width	15	15	15.25	15.25	15.5	15.5	16.25	16.5	16.75	16.75	17	17.25	17.5	17.5

Indicate crucial points on the pattern:

- Mark the position of the buttons with a basting thread (↖) by using a needle and thread to indicate the middle of the (X).
- Mark the position of the breast pocket with a basting thread (↖) by using a needle and thread to indicate the middle of the (◇).

Indicate crucial points on the outline of the pattern:

- Nick the pattern paper and fabric at the places where a single vertical line (I) and double vertical lines (II) are indicated.
- Cut a small corner out of the fabric where a V symbol is or on the finished hemline.
- Cut a small corner (V notch) out of the pieces that lie on the fabric fold to mark the middle of these pieces.

IMPORTANT

The pieces highlighted in light yellow have iron-on interfacing attached to the wrong side.

sewing instructions



The method used to finish sewing the garment depends on the fabric used. The pieces are always sewn together with the right sides of the fabric matching exactly, unless stated otherwise.

F front

B back



right side

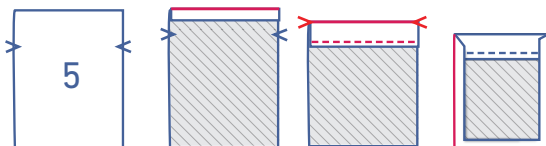


wrong side

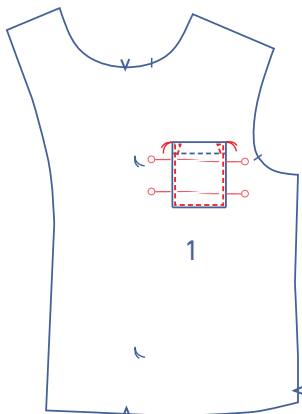


iron-on interfacing

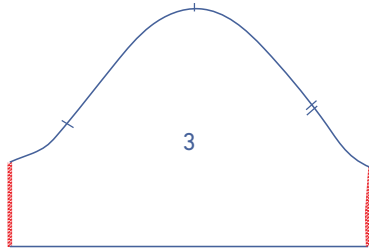
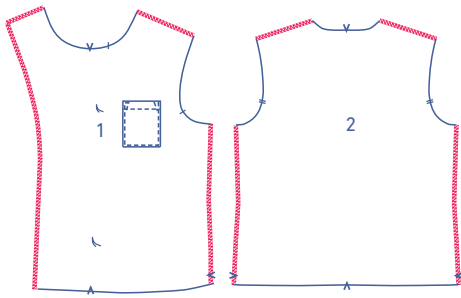
1



Start by pressing the top of the pocket (5) 1 cm over, followed by pressing it a second time over to the V notches. Next, sew in place right next to the edge. Press the seam allowance of the remaining 3 sides over to the wrong side.

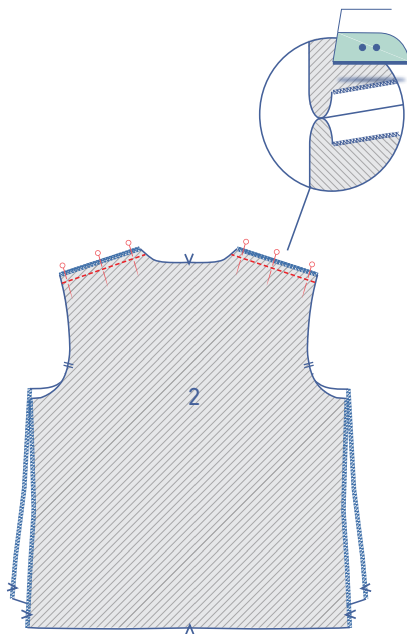


Pin the pocket at the place indicated on the front (1). Sew in place right next to the edge. At the top, sew reinforcement triangles on both sides.

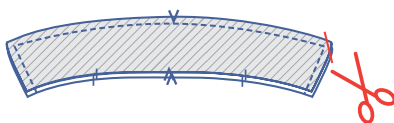
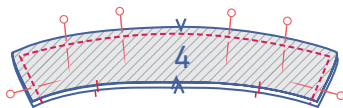


2

Overlock the side and shoulder seams and the marked raw edge of the front's shaped facing, the side and shoulder seams of the back (2) and the sides of the sleeve (3).

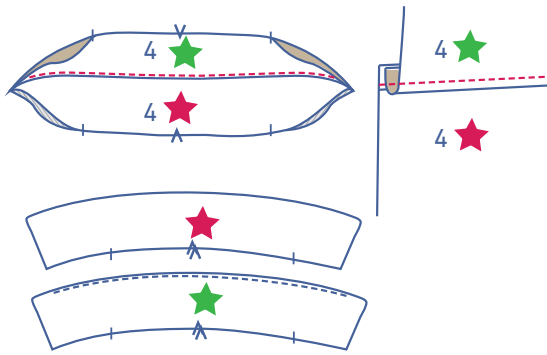


Pin and sew the shoulder seams of the front and back and press the seam allowance open.

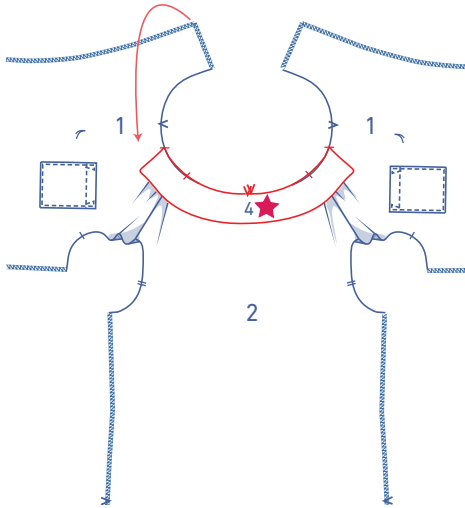


3

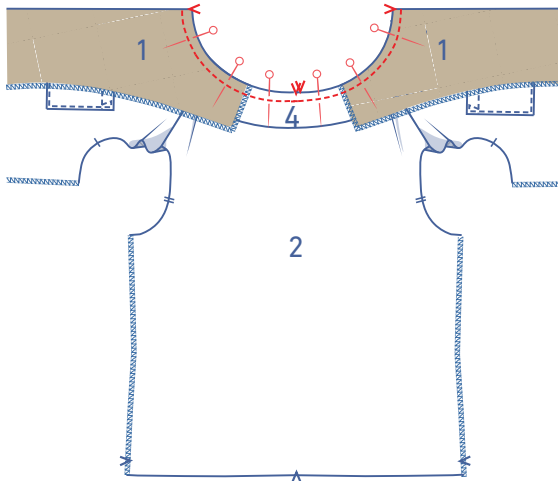
Pin and sew the contour of the collars (4) to each other, with the exception of the bottom. Grade and trim the corner seam allowances. Turn inside out.



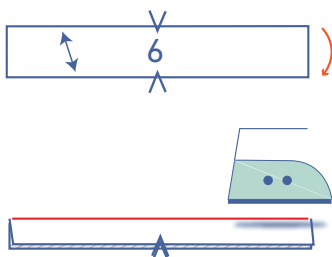
Fold both collar pieces open, so that the right sides are facing up. The top collar (= visible when you're wearing the shirt) has been indicated with a small red star, while the sewn undercollar has been indicated with a small green star. Fold the seam allowance towards the sewn undercollar (= small green star). Sew the undercollar at 2 mm from the seam through all layers (undercollar + seam allowance). Next, neatly press the seams together.



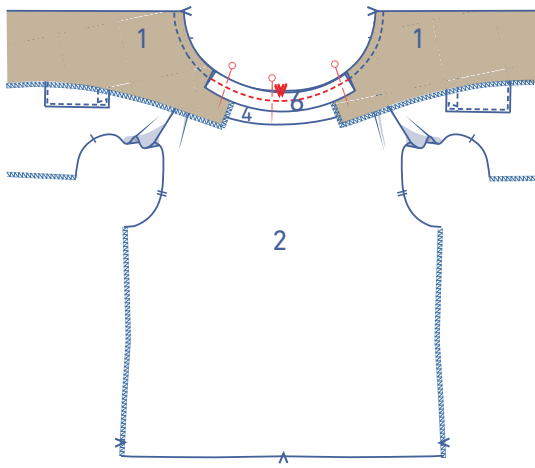
Pin the unfinished raw edges of the collar to the neckline. The upper collar should be on top. The finished side of the collar should line up with the nick on the neckline. The nick on the collar should line up with the shoulder seam. The V notch indicating the middle of the collar should line up with the V notch indicating the middle of the back.



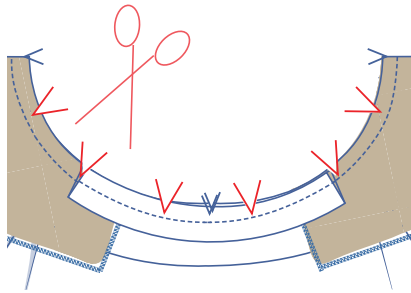
Fold the shaped facing of the front over to the V notch with the right side of the fabric facing inwards. Line up the raw edges of the front's neckline with the raw edges of the shaped facing's neckline so that they match perfectly. Sew the neckline in place from V notch to V notch.



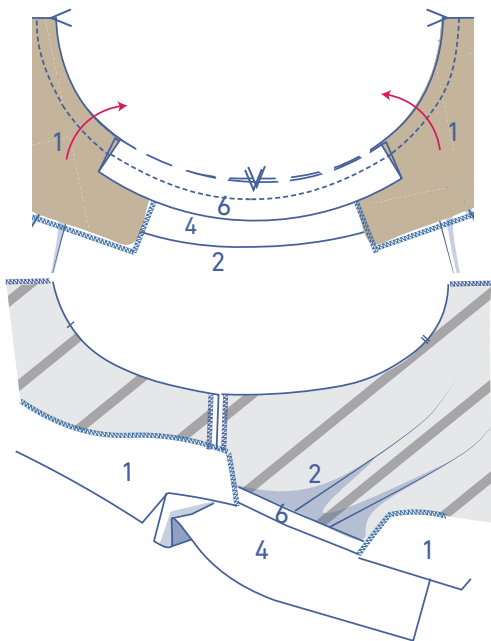
Press the bias tape for the neck (6) in half lengthwise with the right side of the fabric facing outwards.



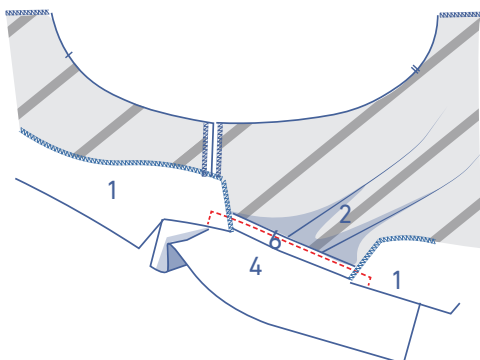
Line up the unfinished raw edges of the bias tape with the neckline. The bias tape should be at the top of the collar and the folded over shaped facing of the front. Pin and sew in place.



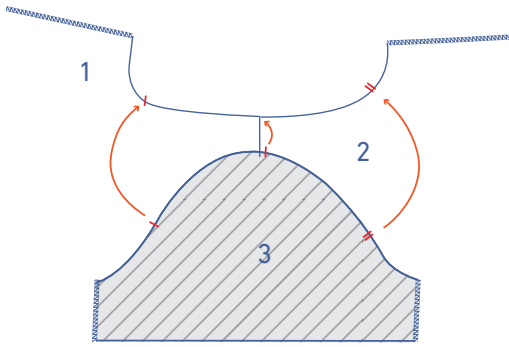
In the curve of the neckline, cut V notches out of the seam allowance and trim the seam allowance to make it a little smaller.



Turn the shaped facing and the bias tape back to the wrong side.

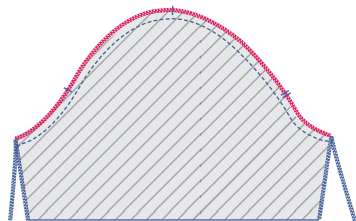
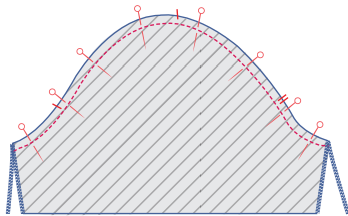


Sew the bias tape right next to the edge folded double, sewing from shoulder seam to shoulder seam. Sew at an angle up to the neckline.

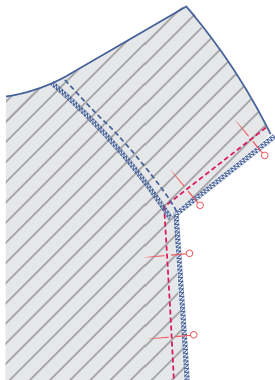


4

Pin and sew the top of the sleeve (3) (= the sleeve cap) to the armhole with the corresponding nicks matching exactly. The single nick marks the front, while the double nicks mark the back. The single nick at the top matches the shoulder seam exactly. Distribute the 'excess' fabric evenly between the nicks.

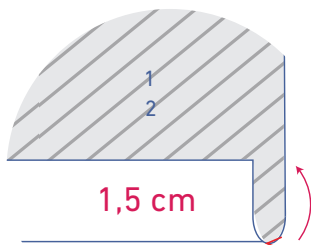


Finish the raw edges together using an overlock stitch.



5

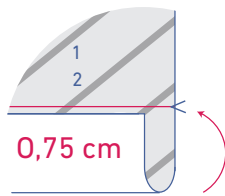
Fold the sleeve and the shirt in half with the right side of the fabric facing inwards. Pin and sew the side and underarm seams in place. Press the seam allowance open.



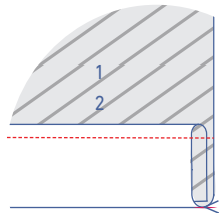
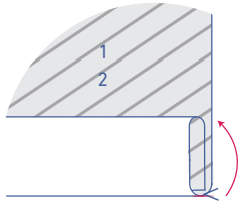
6

Fold the hem 1.5 cm over and fold back open.

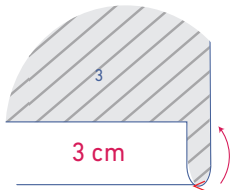




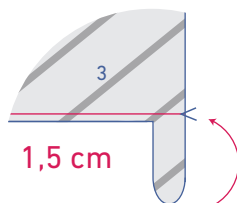
Fold the raw edge of the hem onto the pre-pressed fold line and then fold over a second time.



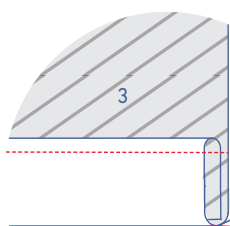
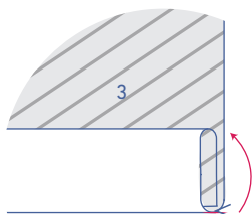
Sew in place right next to the edge.



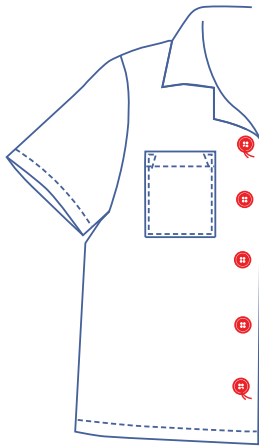
Fold the sleeve hem 3 cm over and press back open.



Fold the raw edge of the sleeve hem onto the pre-pressed fold line and then fold over a second time.

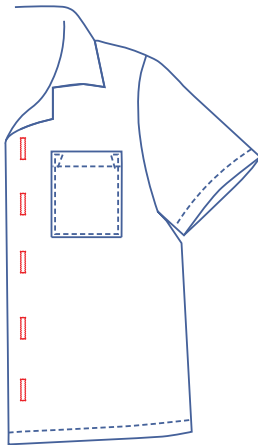


Sew in place right next to the edge.



7

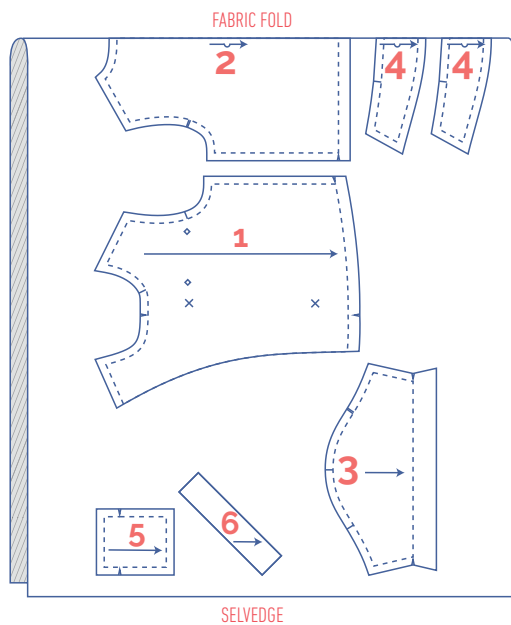
Sew the buttons on at the indicated places. The top and bottom button are marked on the pattern. Divide the distance equally to determine the position of the other buttons.



Make the button holes on the LF (for boys or for a unisex model) or on the RF (for girls) so that they are lined up with the position of the buttons. The button should align with the top 1/3 of the button hole.

fabric plan for fabric 140 cm wide

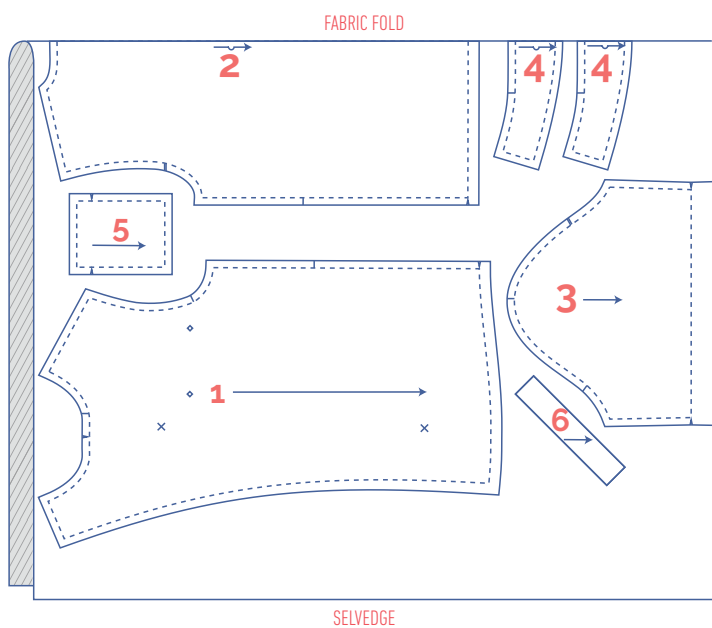
for size 1 - 18m



KEEP IN MIND

You only need to cut pattern piece 6 only once.

for size 2 - 12y



KEEP IN MIND

You only need to cut pattern piece 6 only once.