

# Hazel by Fibre ⚡ood



# Hazel by Fibre Mood



**XS - XXXL**

The Hazel hoodie will make you come across as cool and hip. This longer women's hoodie has a kangaroo pocket where you can store anything and everything. Make the hoodie as long or short as you like; you can find out how to easily alter the pattern [here](#).

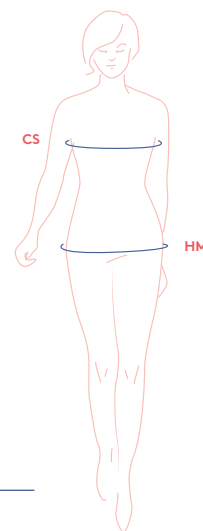


## size chart

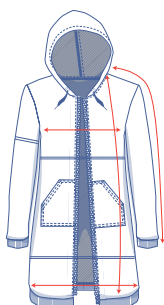
size	XS		S		M		L		XL		XXL		XXXL		
EU	32	34	36	38	40	42	44	46	48	50	52	54	56	58	60
UK	4	6	8	10	12	14	16	18	20	22	24	26	28	30	32
US	0	2	4	6	8	10	12	14	16	18	20	22	24	26	28
CS (cm)	76	80	84	88	92	96	100	104	110	116	122	128	134	140	146
HM (cm)	86	90	94	97	100	103	106	109	115	120	125	130	135	140	145

**Chest (CS):** measure horizontally around the fullest part of the chest.

**Hip (HM):** measure horizontally around the widest part of the lower body.



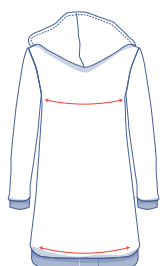
## measurements (in cm)



size	XS	S	M	L	XL	XXL	XXXL
length	90.5	90.75	91	92.25	95.5	95.75	96
sleeve length*	69	70.25	71.75	73.5	76	78	80
1/2 bust**	48.25	52.25	56.25	60.25	65.25	71.25	77.25
1/2 hem circumference**	51.5	55.5	59.5	63.75	68.75	75	81

\* Includes the shoulder length.

\*\* Average of the front and back.



Compare the stated lengths to the measured or desired lengths. **Lengthen** or **shorten** the hoodie and/or the sleeves by cutting the pattern pieces at the indicated double lines and then spreading the pattern pieces out X cm from each other or overlapping them where needed. Make sure that the CF and CB lines and the side seams are always straight.



### IMPORTANT

Adjust the fabric to be used based on these alterations. Be sure to take the available zip lengths into account when lengthening or shortening.

## supplies



- Thread
- Open-end zip: see table
- Scrap of iron-on interfacing
- Metal grommet (Ø 1.1 cm): 2 (optional, because you can also make a buttonhole)
- Cord (hood): 140 cm
- Cuff fabric: see table
- Fabric: see table

in cm	XS	S	M	L	XL	XXL	XXXL
zip length	80	80	80	80	85	85	85

fabric used (in cm)	XS	S	M	L	XL	XXL	XXXL
standardcuff fabric fabric width 35 cm	50	50	50	50	50	50	50
standard fabric fabric width 140 cm	180	180	225	230	245	250	255

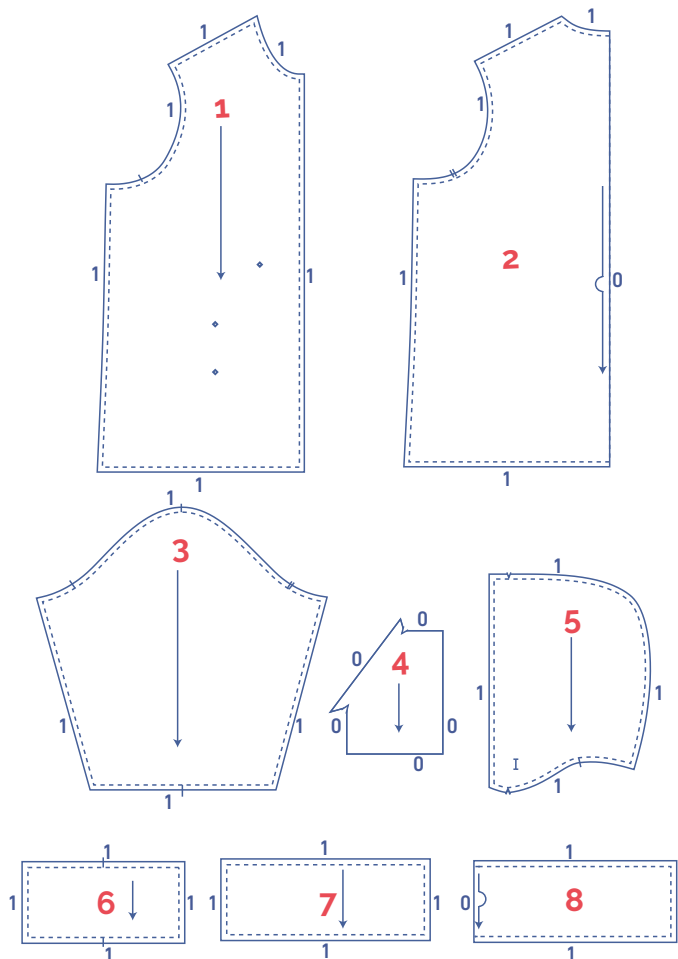
The corresponding fabric plan can be found on the last page.

**fabric advice** Make the Hazel hoodie in sweatshirt fabric, French Terry, Ponte Roma, etc. Use cuff fabric for the cuffs and wrist trim.



## pattern pieces & seam allowances (in cm)

To sew the garment as described in the instructions, you must draw the illustrated seam allowances around the paper pattern pieces before cutting them out.



1. front: 2x
2. back: 1x on fabric fold
3. sleeve: 2x
4. pocket: 2x
5. hood: 2x
6. wrist trim: 2x (in cuff fabric)
7. hem band front: 2x (in cuff fabric)
8. hem band back: 1x on the fabric fold (in cuff fabric)

Mark the following points on a pattern piece using basting thread (↱).

**Location of the metal grommet or button hole:** I

**Pocket location:** ◇

Mark crucial points on a pattern outline by cutting neatly through the pattern paper and fabric at a I or II symbol and/or by cutting a small corner out of the fabric at a V symbol.

Cut a small corner (V notch) out of pieces that lie on the fabric fold (↪) to mark the middle of these pieces.

# sewing instructions



The method used to finish sewing the garment depends on the fabric used.  
The pieces are always sewn together with the right sides of the fabric matching exactly, unless stated otherwise.

F front

B back

RF right front

LF left front

CF centre front

CB centre back



right side



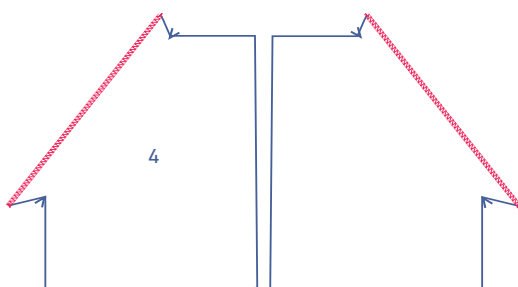
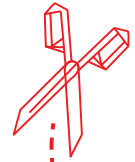
wrong side



cuff fabric

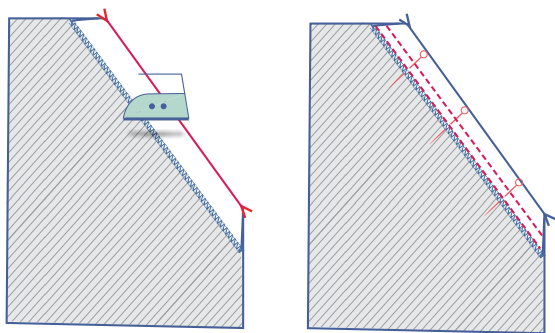


iron-on interfacing

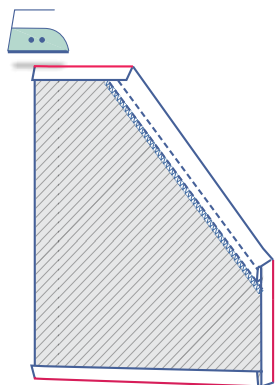


**1**

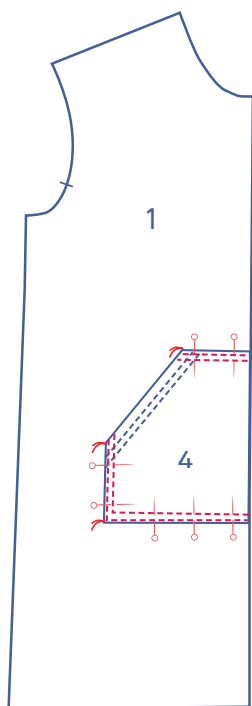
Finish the slanted sides of the pocket pieces (4) using an overlock stitch.



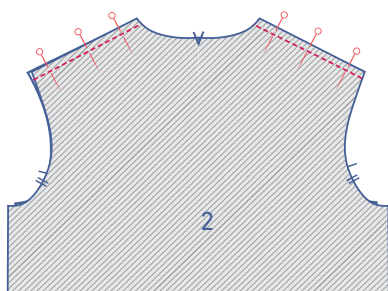
Press these slanted sides over the wrong side at the V notch and sew in place right next the overlocked stitching.



Press the marked edges 1.5 cm over to the wrong side.

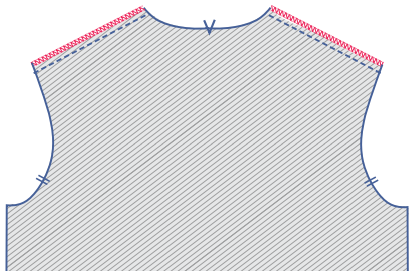


Pin the pocket to the front (1) at the designated place. Sew the pocket in place using a double stitch: the first line of stitching should be 2 mm from the edge with the second line next to the first. The width between the two should equal the size of a presser foot.

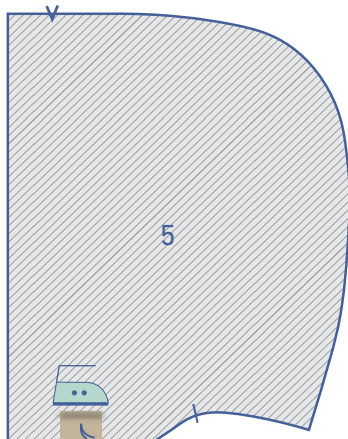


## 2

Pin and sew the shoulder seams of the front and back (2).

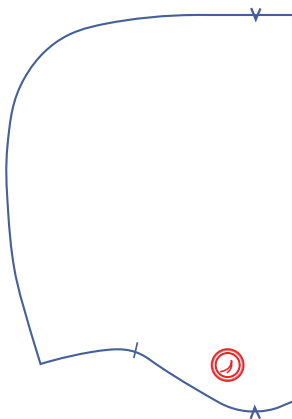


Finish the raw edges together using an overlock stitch and press the seam to the front (F).

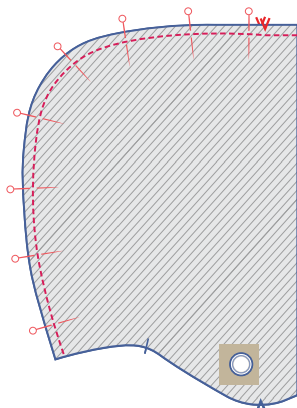


### 3

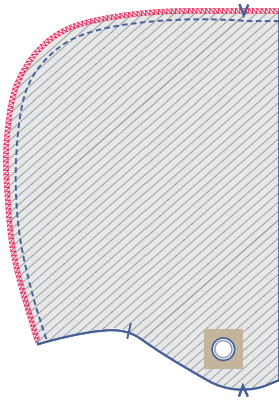
Press a scrap of iron-on interfacing onto the wrong sides of both hood pieces (5) at the designated place.



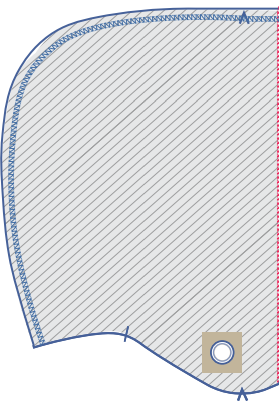
Make a buttonhole at the designated place or insert a metal grommet.



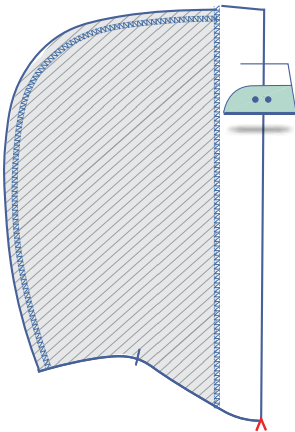
Pin and sew the rounded edges of both hood pieces (5) together.



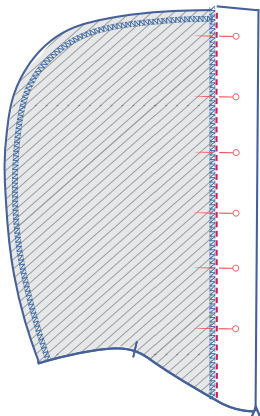
Finish the raw edges together using an overlock stitch and press the seam allowance to one side.



Finish the right raw edge of the shaped facing using an overlock stitch.

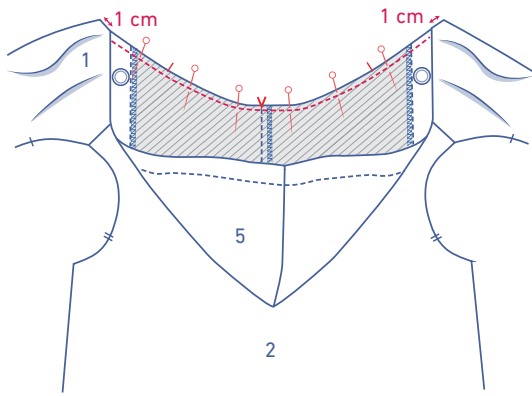


Press the shaped facing over to the V notches.

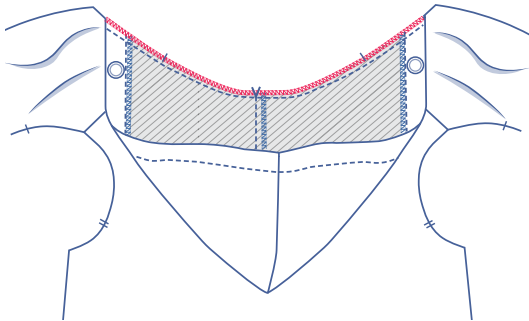


Pin and sew in place right next to the overlocked edge.

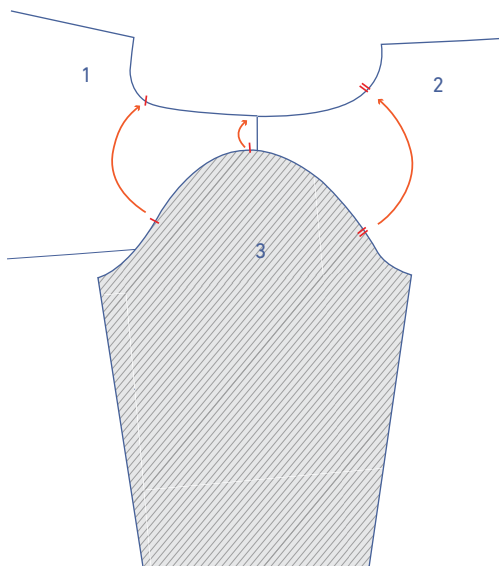




Pin and sew the hood to the neckline. The finished right side should be 1 cm away from the CF seam. The hood seam should line up with the V notch that indicates the CB and the hood's nicks should line up with the shoulder seams.

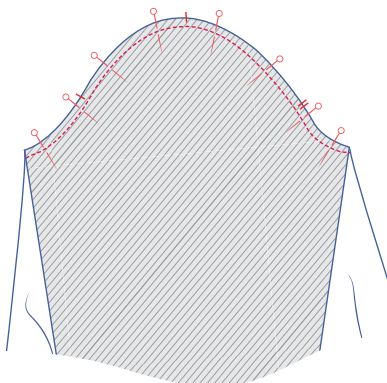


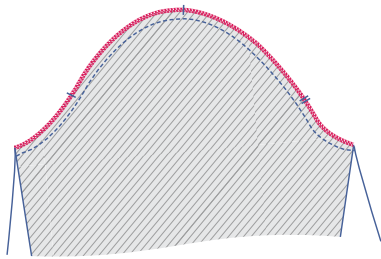
Finish the raw edges together using an overlock stitch.



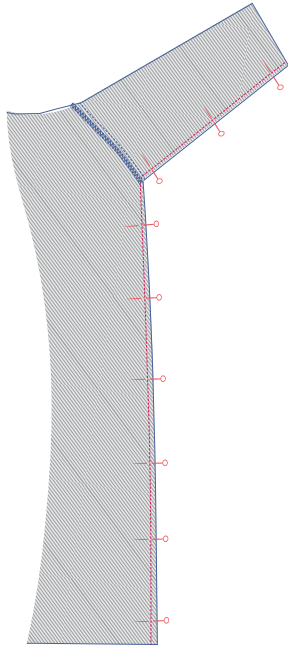
## 4

Pin and sew the top of the sleeve (3) (= the sleeve cap ) to the armhole with the corresponding markings matching exactly. The single nick marks the front, while the double nicks mark the back. The upper-most nick should be aligned with the shoulder seam.



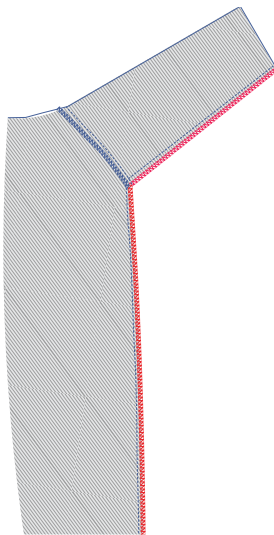


Finish the raw edges together using an overlock stitch.

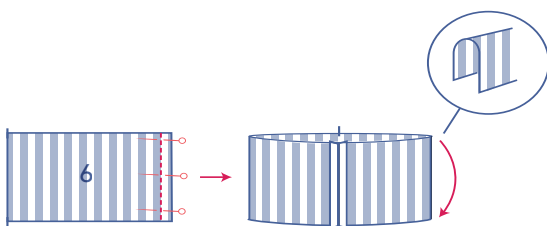


## 5

Pin and sew the side and underarm seams of the front and back.

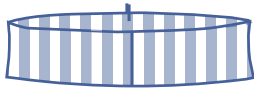


Finish the raw edges together using an overlock stitch.

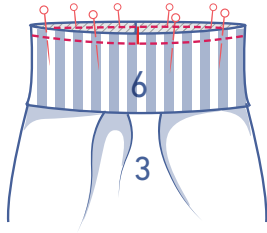


## 6

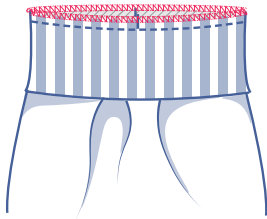
Sew the short sides of the wrist trim (6) and press the seam open.



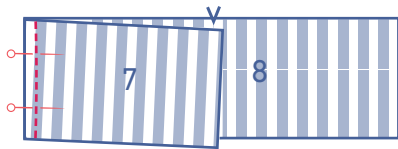
Press the wrist trim in half lengthwise with the right side facing outwards.



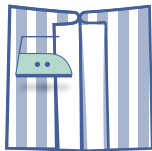
Pin and sew both raw edges of the wrist trim to the bottom of the sleeve. Make sure that the seams and nicks continue to match. The circumference of the wrist trim is smaller than the sleeve hem, so stretch the wrist trim to match the sleeve hem.



Finish the raw edges together using an overlock stitch.



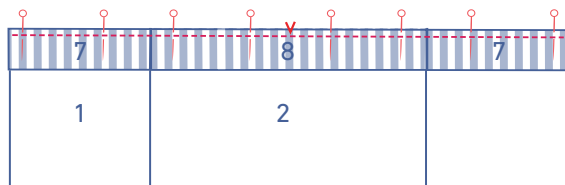
Pin and sew the side seams of the cuff front (7) and cuff back (8).



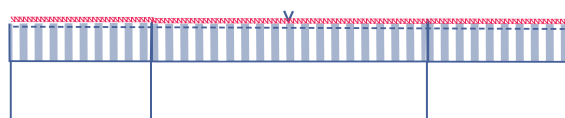
Press the seams open.

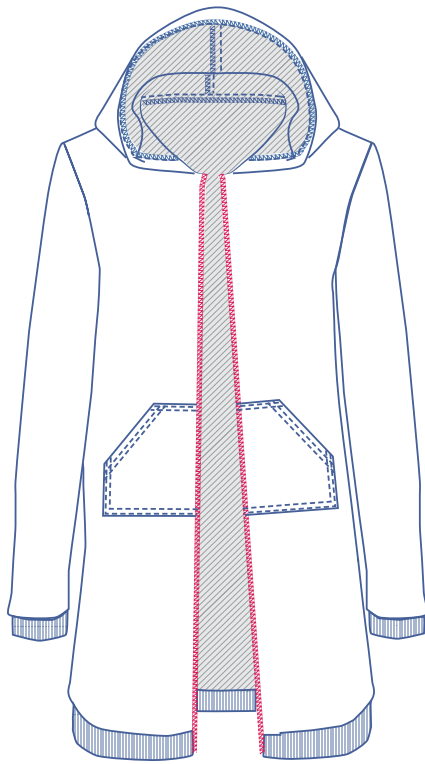


Fold the hem bands in half lengthwise with the right side of the fabric facing outwards and press.



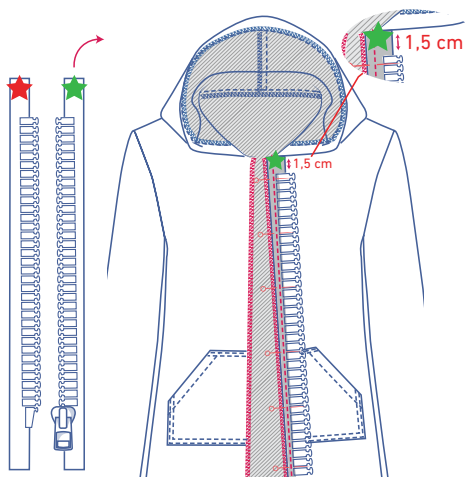
Pin and sew both raw edges of the hem bands to the bottom of the work piece. Make sure that the seams and the markings continue to match. The circumference of the hem band is smaller than the circumference of the work piece, so stretch the hem band to the bottom of the work piece.





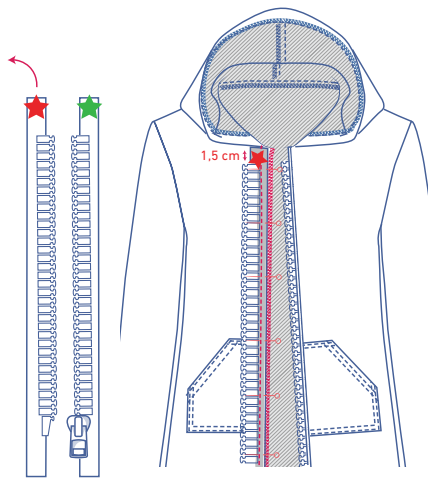
## 7

Finish the CF seam using an overlock stitch.

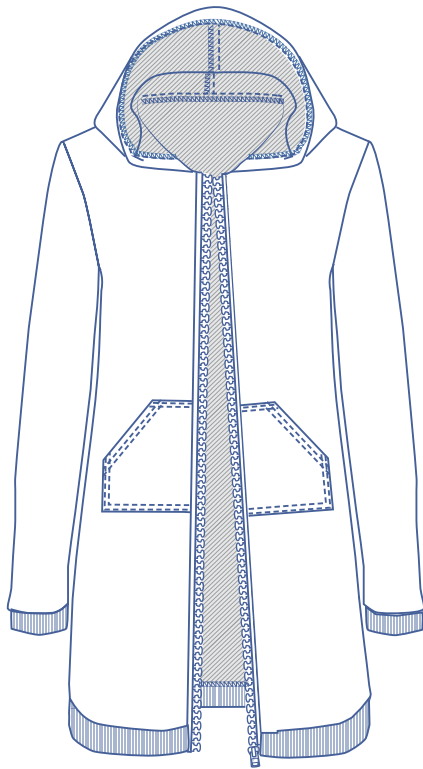


Lay the zip with the right side facing up. Open the zip and flip the zip tape marked with a small green star over to the right and onto the LF.

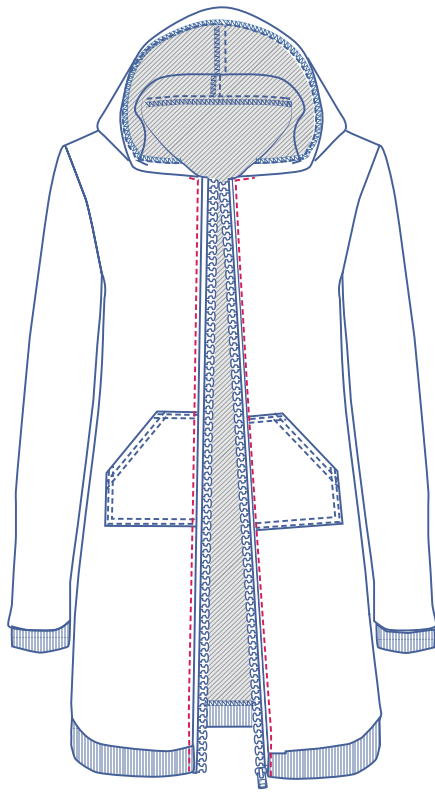
Pin the zip tape in place with the edge next to the overlock stitch. The zip teeth should lie 1.5 cm under the top edge. Pin in place at 1 cm from the CF seam (= down the middle of the zip tape).



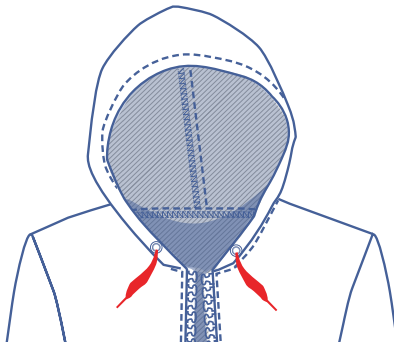
Flip the zip tape back over with the right side facing up and the zip teeth faced towards the CF.  
Lay the other zip (marked with a small red star) with the right side facing down onto the RF. Sew in place the same way you did with the other zip tape.



Flip the zip tape back over with the right side facing up and the zip teeth faced towards the CF.



Top stitch at presser foot width from the CF seam and sew up to the neckline using the narrow presser foot. This will keep the zip tape firmly in place.

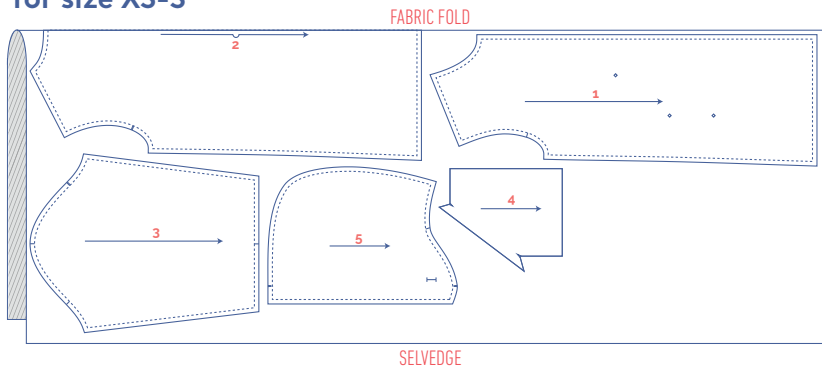


**8**

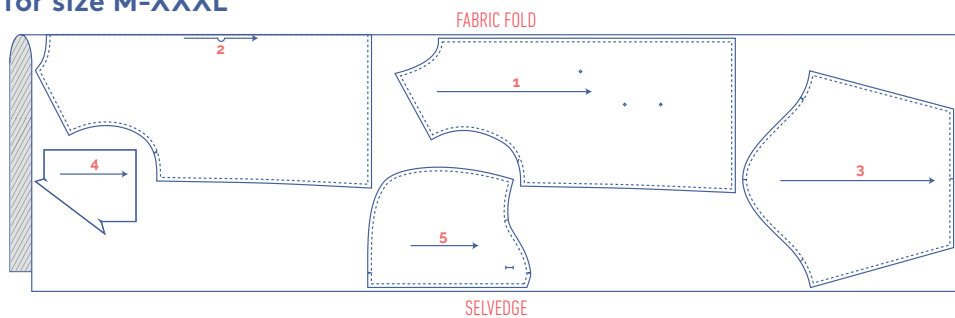
Thread the cord through the tunnel in the hood.

# fabric plan for fabric 140 cm wide

for size XS-S



for size M-XXXL



for knit 35 cm in the round for ribbing

