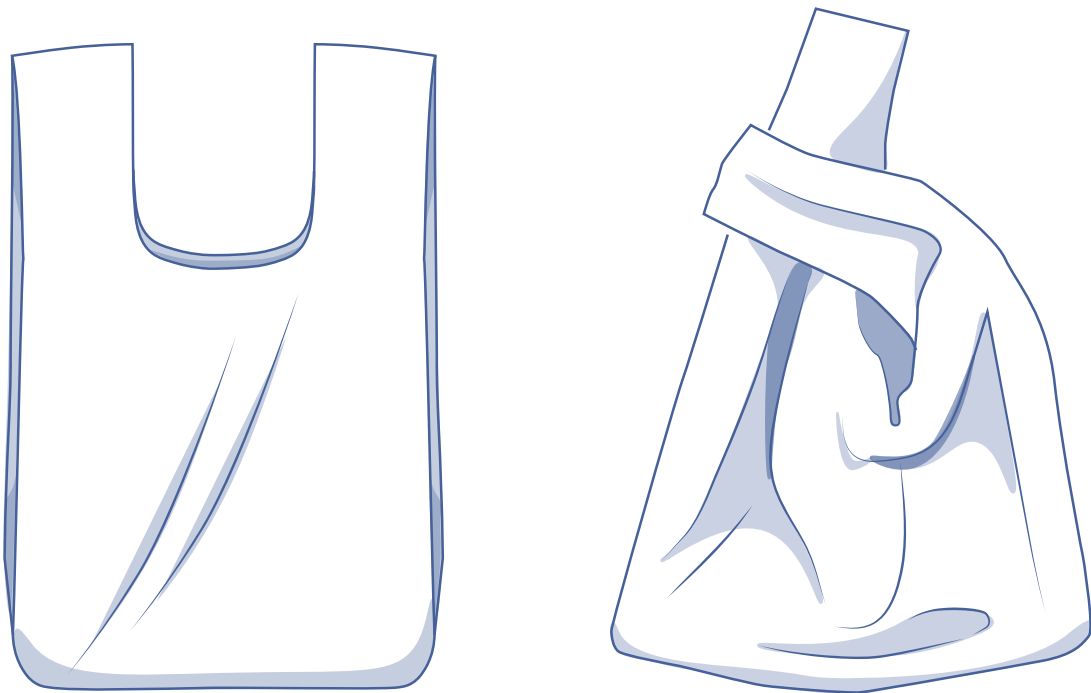




Phia tote by Fibre ood



Trend alert: shopping tote in faux fur.

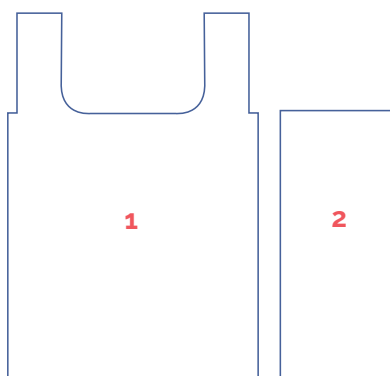
supplies



- Faux fur (140 cm wide): 55 cm
- Thread
- The pattern can be found on the sheet of tracing paper A blue or can be downloaded on www.fibrewood.com.



pattern pieces & seam allowances (in cm)



- 1 center piece: 2x
- 2 side piece: 2x

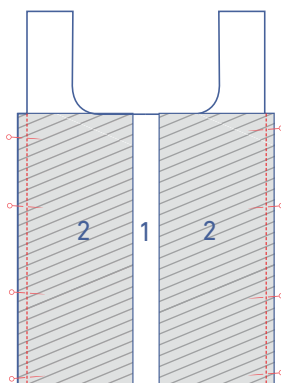
IMPORTANT

All seam allowances are already included in the pattern.

sewing instructions

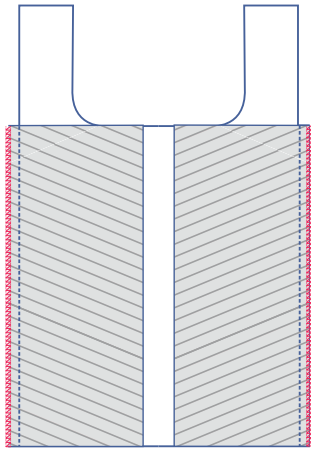


Print the pattern at 100% and stick the different pieces to each other. Always sew the pieces positioned with the right sides of the fabric together, unless stated otherwise.

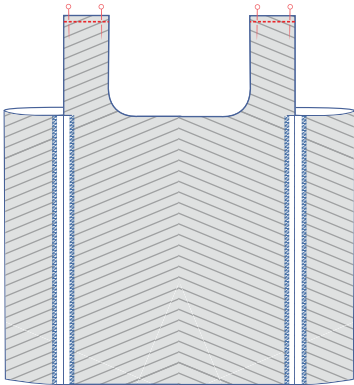


1

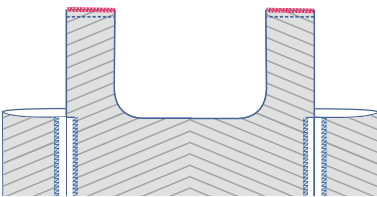
Pin and sew the long sides of the side pieces (2) and the center pieces (1).



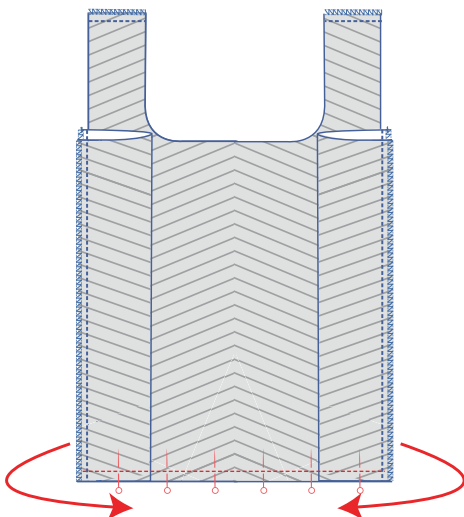
Finish the seams using an overlock stitch.



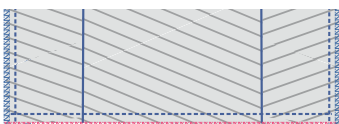
Pin and sew the top of the handles.



Finish the seams using an overlock stitch.



Fold the bottom of the side pieces to the front, over the tote and sew the bottom closed.



Finish the seam using an overlock stitch.