

# Stella by Fibre ⚡ood



# Stella by Fibre ⚡ood

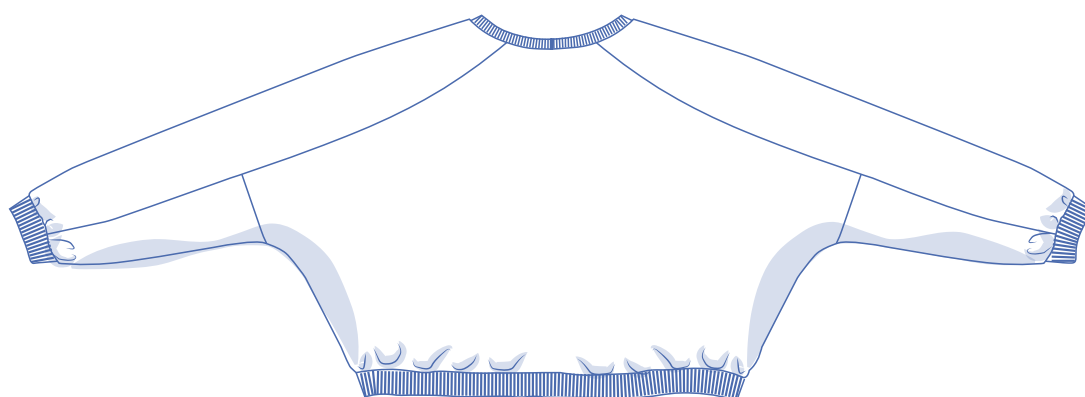
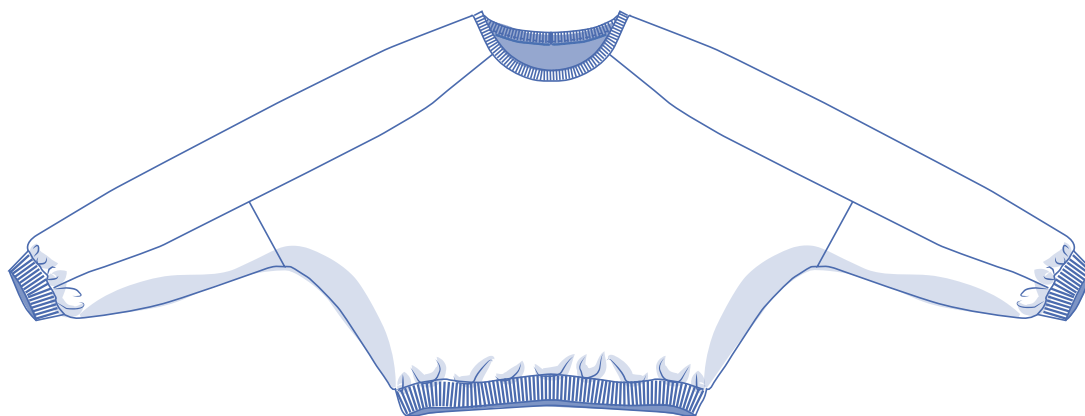
\*\*\*



**XS - XXXL**

This cropped sweater that only just reaches the waist has a round neckline, decorative inserts and batwing sleeves.

What makes the Stella sweater such a versatile model is that a different effect can be created depending on which fabric is used.



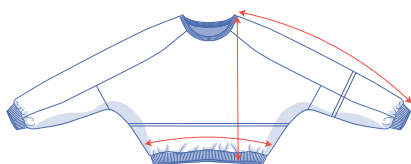
## sizing chart

size	XS	S	M	L	XL	XXL	XXXL
EU	32 34	36 38	40 42	44 46	48 50	52 54	56 58 60
UK	4 6	8 10	12 14	16 18	20 22	24 26	28 30 32
CS (cm)	76 80	84 88	92 96	100 104	110 116	122 128	134 140 146



**Chest size (CS):** Measure horizontally at the widest point of the bust.

## measurements



size	XS	S	M	L	XL	XXL	XXXL
length (cm)	50	51	52	53.25	54.75	56.75	58.25
1/2 hem circumference* (cm)	36	40	44	48	53	59	65
sleeve length** (cm)	62.5	64.5	66.5	68.5	71	74.25	77.25

\* Start measuring from the top of the hem

\*\* The sleeve length includes the shoulder length.

*Keep in mind that the model is cropped and only just reaches waist length.*

Compare the stated lengths to the measured or desired lengths. **Lengthen** or **shorten** the top and/or the sleeves by cutting the pattern pieces at the indicated double lines and then spreading the pattern pieces out X cm from each other or overlapping them where needed. Make sure that the CF and CB lines and the side seams are always straight.



**IMPORTANT**

Adapt the amount of fabric used to the alterations that you are making to the pattern!

## supplies



- Thread
- Fabric trim: max. 40 cm
- Fabric: see table

size	XS	S-L	XL	XXL	XXXL
fabric* (cm)	100	110	135	145	155

\* 140 cm wide

size	XS-S	M-XL	XXL	XXXL
stripe print fabric* (cm)	100	110	120	130

\* 158 cm wide

size	XS	S-XL	XXL	XXXL
fabric* (cm)	100	110	140	150

\* 146 - 148 cm wide

## fabric advice



You can achieve a different look depending on the type of fabric used.

We made a version from three different fabrics: a fine knitted fabric with stripes and glitter, a red interlock knit and a gray ribbed jersey.

The neck, hem and wrist trims are made out of sweatshirt ribbing.

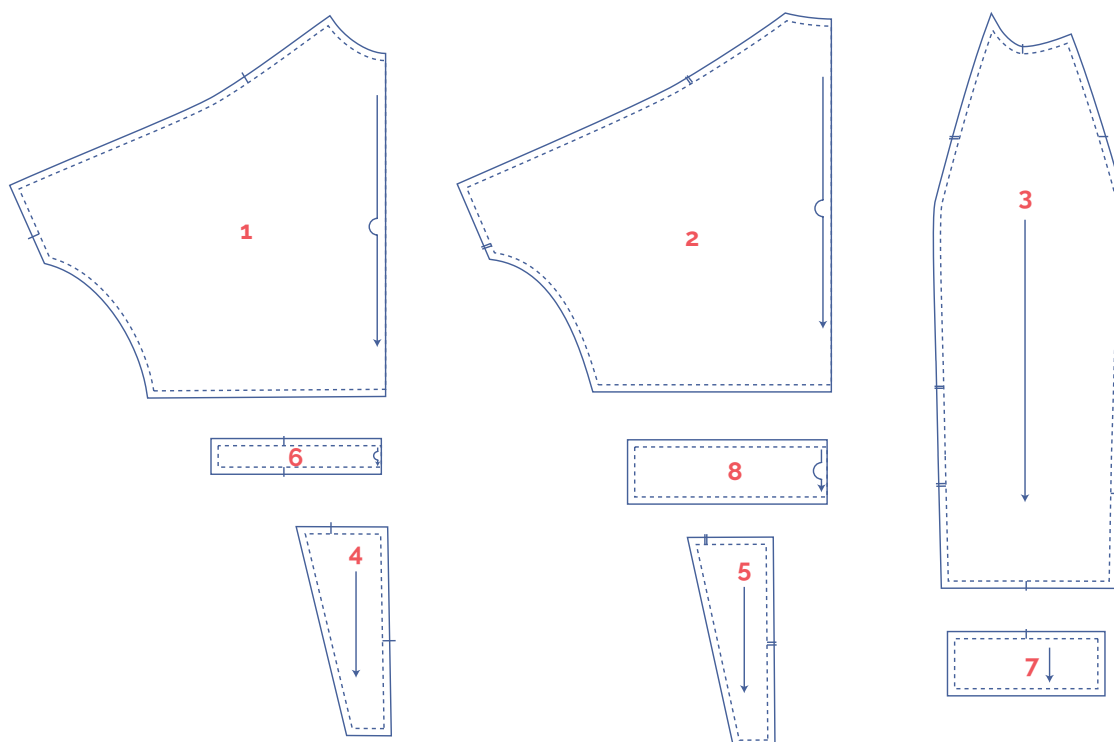
Using sweater knit or French terry cloth is also a great option.

By using a stripe print fabric, you can create visual interest by alternating how the stripes are cut each time. Are you using a solid, but want to avoid ending up with just another boring garment? Why not try sewing some pretty fringes and ribbons onto the sweater?

## pattern pieces & seam allowances (in cm)

Draw 1 cm all the way around the paper pattern pieces unless stated otherwise in the illustrations.

The sides of pieces 1, 2, 6 and 8 on the fabric fold ( —> ) do not have any seam allowance.



- 1 front: 1x on fabric fold
- 2 back: 1x on fabric fold
- 3 sleeve a: 2x
- 4 sleeve b: 2x
- 5 sleeve c: 2x
- 6 collar: 1x on fabric fold
- 7 wrist trim: 2x
- 8 hem: 2x on fabric fold

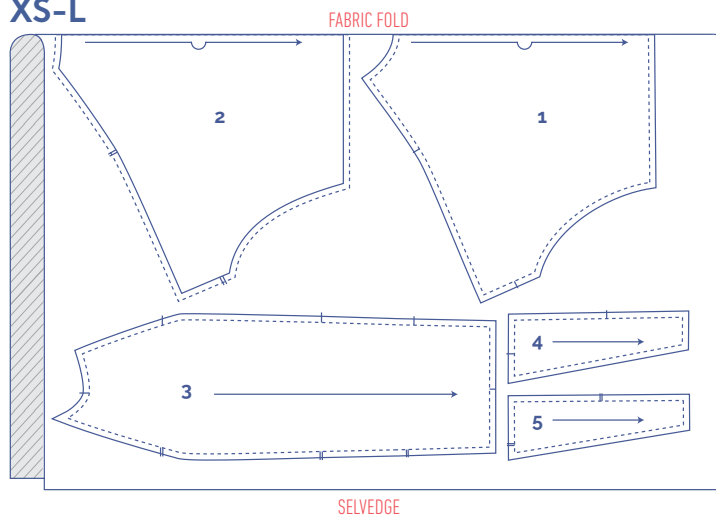
Indicate important points on the outline of the pattern:

- Nick the pattern paper and fabric at the places where a single vertical line ( | ) and double vertical lines ( || ) are indicated.
- Cut a small corner (V notch) out of pieces 1, 2, 6 and 8, which lie on the fabric fold to mark the middle of these pieces.

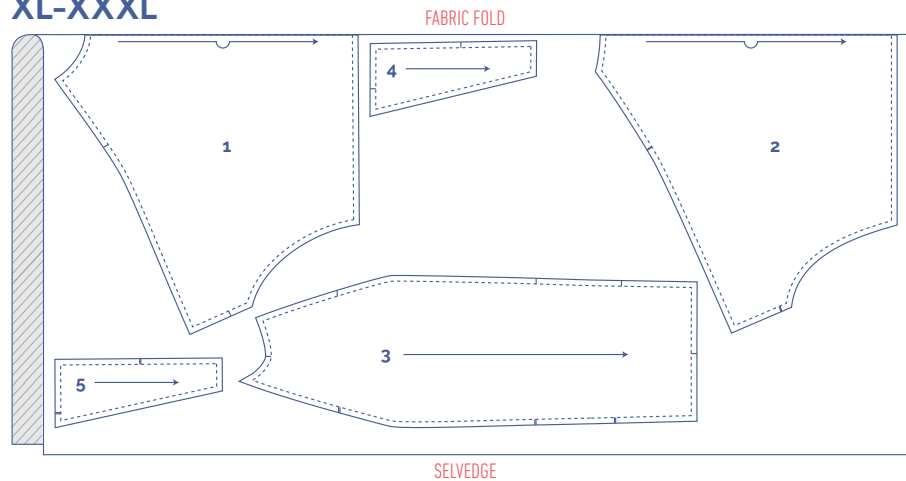
## fabric plan

### 1. for solid fabric 140 cm wide

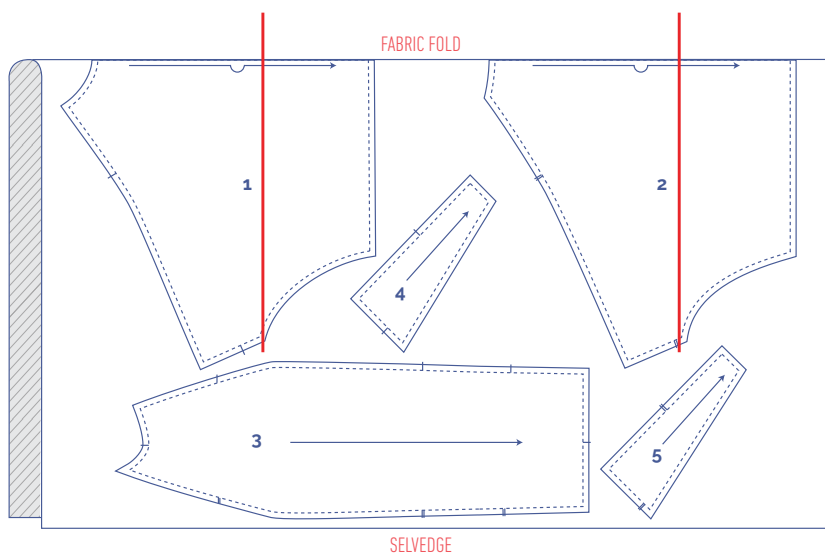
XS-L



XL-XXXL



### 2. for stripe print fabric 158 cm wide

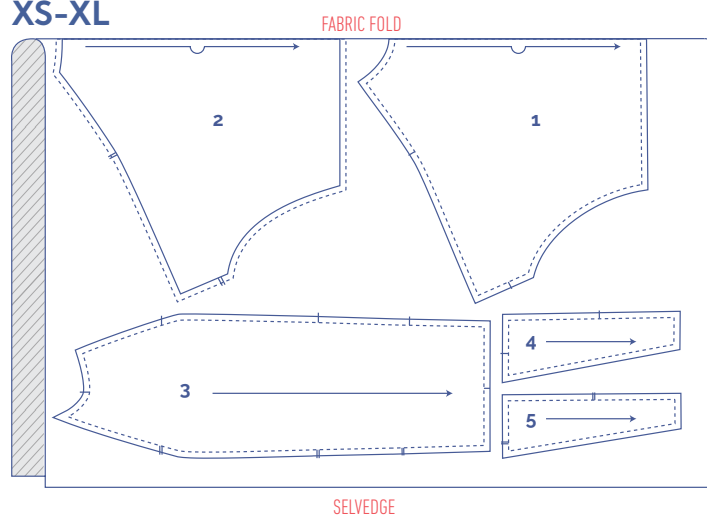


**IMPORTANT**

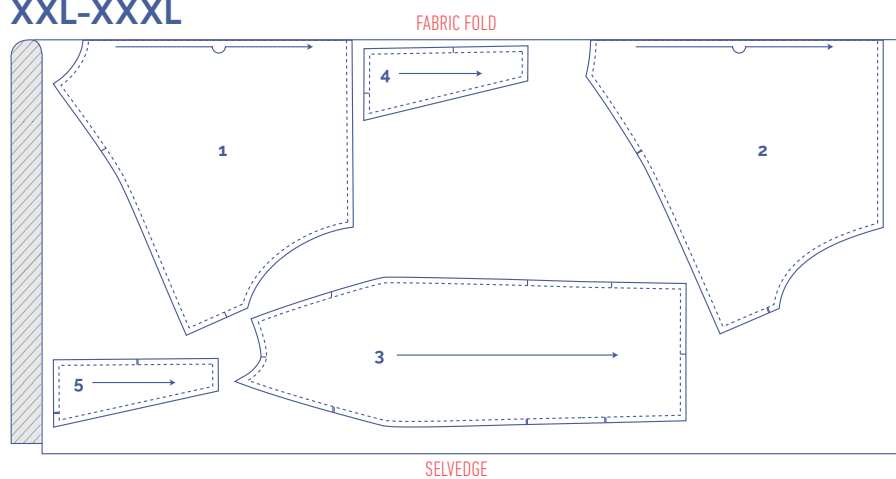
Pattern pieces 1 and 2 must be laid out evenly with the indicated line running through the same stripe in the fabric. Pattern pieces 4 and 5 are laid out on the bias to create a playful effect.

### 3. for solid fabric 146-148 cm wide

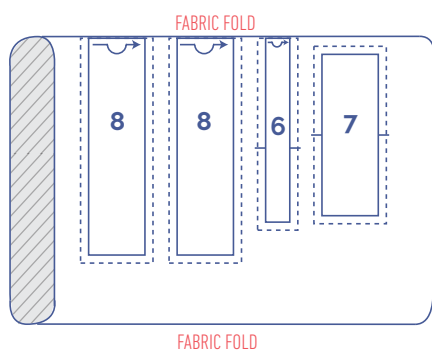
**XS-XL**



**XXL-XXXL**



### 4. for knit 35 cm in the round for ribbing (applies to all fabric types used)






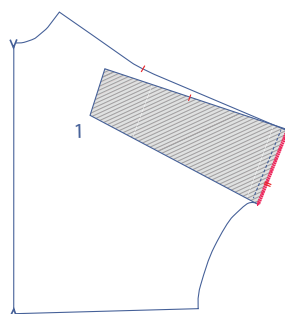
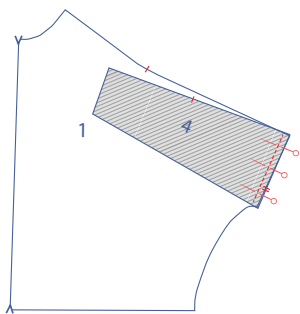
## sewing instructions



The method used to finish sewing the garment depends on the fabric used. The pieces are always sewn together with the right sides of the fabric matching exactly, unless stated otherwise.

### Key with symbols

-  → right side
-  → wrong side
-  → ribbing
- FF** → facing front
- FB** → facing back
- CF** → centre front
- CB** → centre back

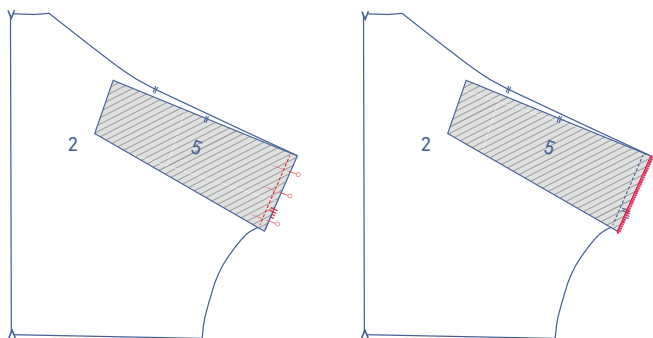


**1**

Pin and sew the sides of the front (1) and sleeve b (4) with the markings matching exactly.

Bind the raw edges and stitch and press the seam allowance to the FF.

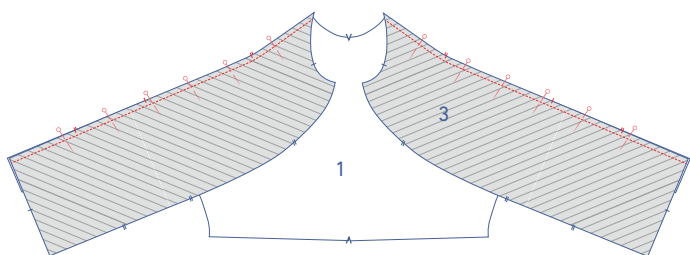
**2**



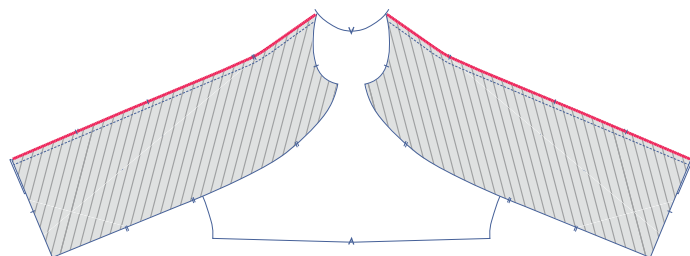
Pin and sew the sides of the back (2) and sleeve c (5) with the markings matching exactly.

Bind the raw edges and stitch and press the seam allowance to the BF.

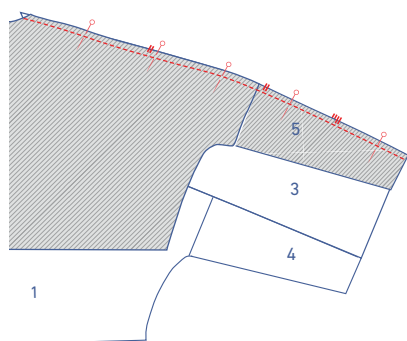
**3**



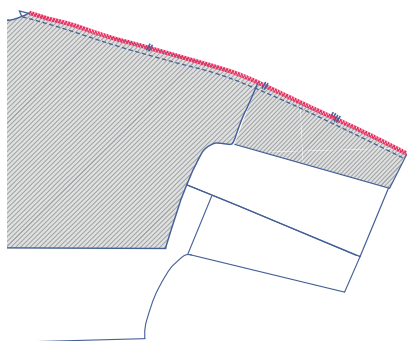
Pin the side with the single nicks of sleeve a (3) to the FF with the matching nicks and sew in place.



Bind the raw edges using an overlock stitch and press the seam allowance to the sleeve.

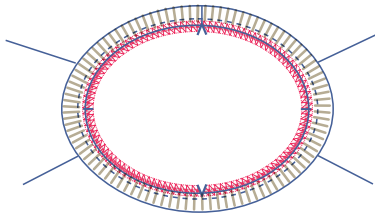
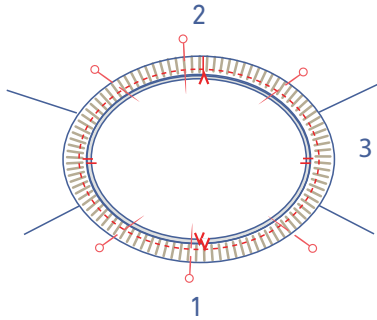
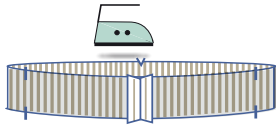
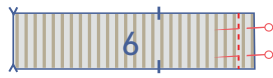


Pin the side with the double nicks of sleeve a (3) to the BF with the matching nicks and sew in place.



Bind the raw edges using an overlock stitch and press the seam allowance to the sleeve.





4

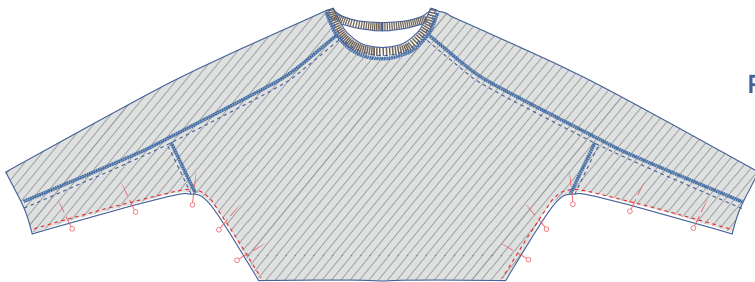
Fold the collar (6) in half with the right side on the inside and sew the CB seam. Press the seam allowance open, and fold the collar in half lengthwise and press again.

Pin and sew the raw edges of the collar to the neckline, making sure that the nicks match. The neckline seam lines up with the V notch of the BF (= CB), with the nick on the neckline matching the nick at the top of the sleeve and the neckline V notch lining up with the FF (=CF) V notch.

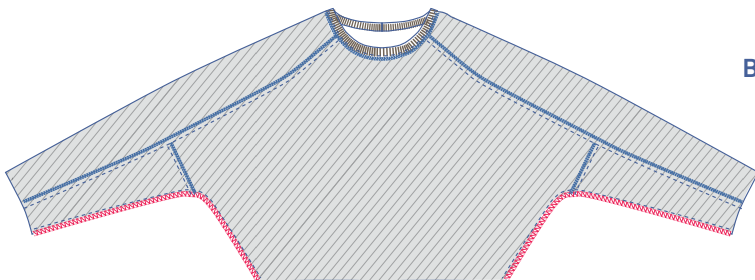
Bind the raw edges using an overlock stitch.

**PLEASE NOTE:** the circumference of the collar is smaller than the circumference of the neck. You will need to stretch the neckline a bit to get the nicks lined up properly.

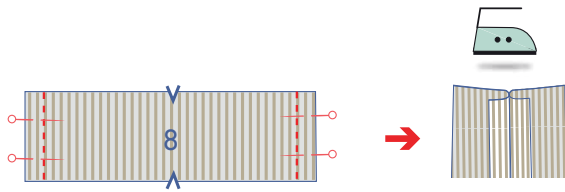
5



Pin and sew the side and seam under the arms into place.

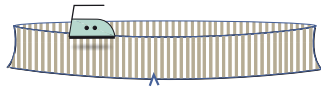


Bind the raw edges using an overlock stitch.

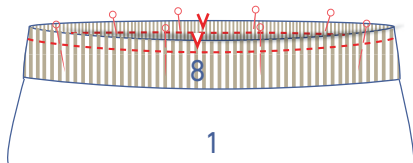


**6**

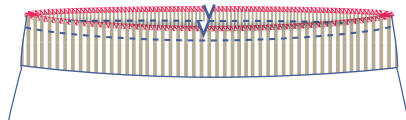
Pin and sew the short sides of both hem bands (8) and press the seams open.



Fold the hem band in half lengthwise and press again.

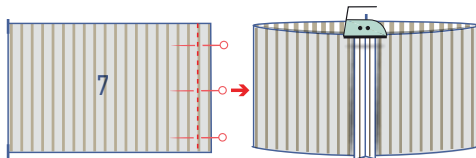


Pin and sew the raw edges of the hem band to the bottom of the top, making sure that the nicks match. The seams of the hem band match the side seams.

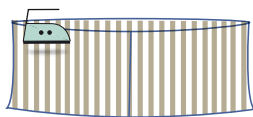


Bind the raw edges using an overlock stitch.

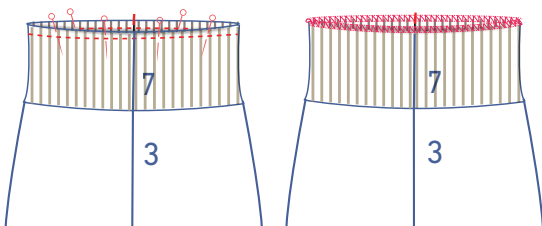
**7**



Fold the wrist trim (7) in half with the right side of the fabric facing inward. Pin and sew the short side and press the seam open.



Press the wrist trim, folded in half lengthwise.



Pin and sew the raw edges of the wrist trim to the bottom of the sleeve, making sure that the nicks and seams match exactly. Bind the raw edges using an overlock stitch.