

Roma by Fibre ood

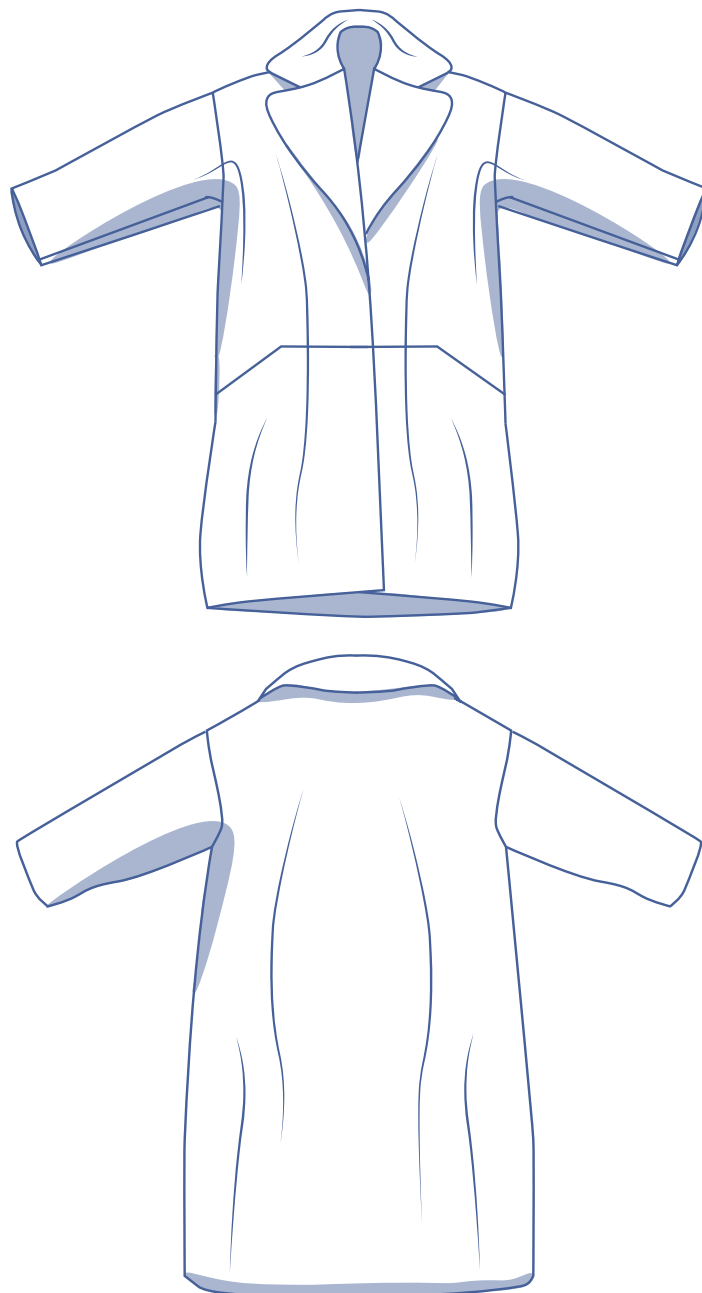


Roma by Fibre Mood



XS - XXXL

This roomy jacket with a striking revere collar and side pockets has a diagonal seam in faux fur or checked wool.



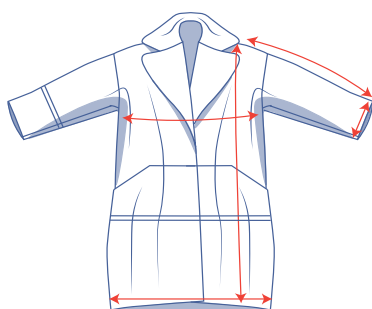
sizing chart

size	XS	S	M	L	XL	XXL	XXXL
EU	32 34	36 38	40 42	44 46	48 50	52 54	56 58 60
UK	4 6	8 10	12 14	16 18	20 22	24 26	28 30 32
CM (cm)	76 80	84 88	92 96	100 104	110 116	122 128	134 140 146



Chest measurement (CM): Measure horizontally at the widest point of the bust.

measurements



size	XS	S	M	L	XL	XXL	XXXL
length (cm)	103.5	104.5	105.5	107.75	111.25	114	115.5
1/2 chest measurement (average, cm)	51.75	55.75	59.75	63.75	68.75	74.75	80.75
1/2 hem circumference (average, cm)	65.5	69.5	73.5	77.75	82.75	89	95
1/2 sleeve hem circumference (average, cm)	16	16.5	17	17.5	18	18.5	19
sleeve length* (cm)	72.5	73	73.75	74.25	75	75.75	76.25

* The sleeve length includes the shoulder.

Compare the stated lengths to the measured or desired lengths. **Lengthen** or **shorten** the jacket and/or the sleeves by cutting the pattern pieces at the indicated double lines and then spreading the pattern pieces out X cm from each other or overlapping them where needed. Make sure that the CF and CB lines and the side seams are always straight.



IMPORTANT

Adapt the amount of fabric used to the alterations that you are making to the pattern!

The model has a fairly relaxed fit. If you would prefer a jacket that's more tailored, then go for a smaller size. Do you prefer a super roomy jacket? Then go for a larger size.

supplies



- Thread
- Iron-on interfacing: max. 295 cm
- Lining: see table
- Fabric: see table
- 3 snaps (Ø 2.1 cm)

size	XS-S	M	L	XL	XXL	XXXL
lining* (cm)	155	210	225	240	255	265

* 140 cm wide

size	XS-S	M	L	XL	XXL	XXXL
fabric* (cm)	290	295	305	315	325	330

* 140 cm wide

size	XS-M	L	XL	XXL-XXXL
fabric* (cm)	245	295	305	320

* 154 cm wide, faux fur

size	XS-S	M	L	XL	XXL-XXXL
fabric* (cm)	305	350	355	365	375

* 154 cm wide, checked fabric

fabric advice



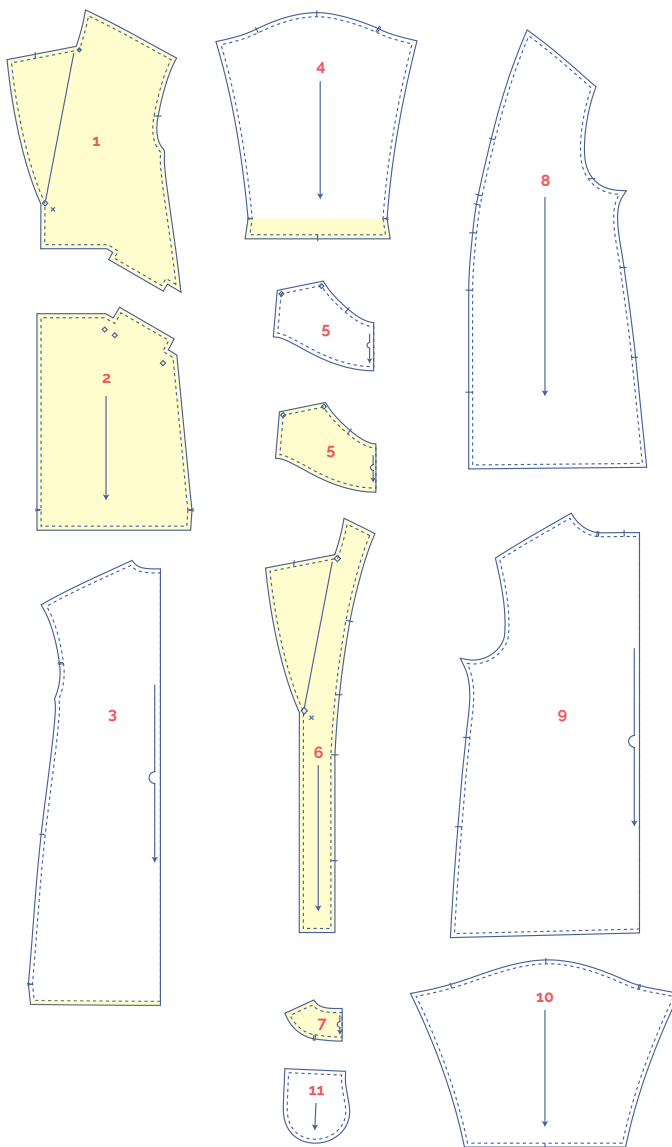
Make the Roma jacket in faux fur, teddy bear fabric or checked wool to be sure that you're totally on trend.

A lovely wool fabric (flannel and cashmere blends, etc.) lends this jacket a look that has true class.

pattern pieces & seam allowances (in cm)

Draw 1 cm all the way around the paper pattern pieces unless stated otherwise in the illustrations.

The sides of pieces 3, 5, 7 and 9 on the fabric fold (—>) do not have any seam allowance.



- 1 front A: 2x
- 2 front B: 2x
- 3 back: 1x on fabric fold
- 4 sleeve: 2x
- 5 collar: 2x on fabric fold
- 6 front facing (FF): 2x
- 7 back facing (BF): 1x on fabric fold
- 8 FF interfacing: 2x
- 9 BF interfacing: 1x on fabric fold
- 10 sleeve lining: 2x
- 11 pocket: 4x

IMPORTANT

The pieces highlighted in light yellow have iron-on interfacing attached to the wrong side.

Indicate important points on the outline of the pattern:

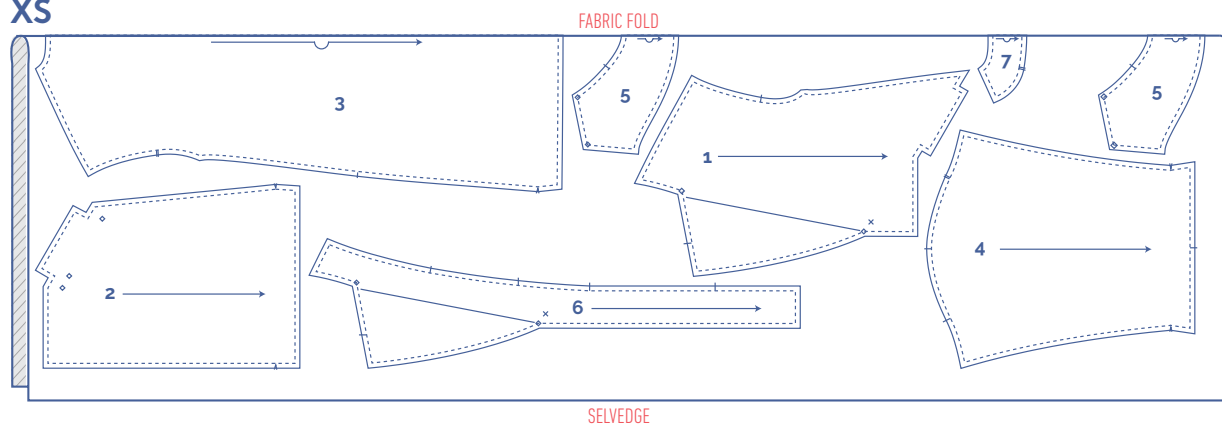
- Nick the pattern paper and fabric at the places where a single vertical line (|) and double vertical lines (||) are indicated.
- Cut a small corner (V notch) out of pieces 3, 5, 7 and 9, which lie on the fabric fold to mark the middle of these pieces.

Mark the centre of places for the snaps (x) and points (◇) using needle and thread.

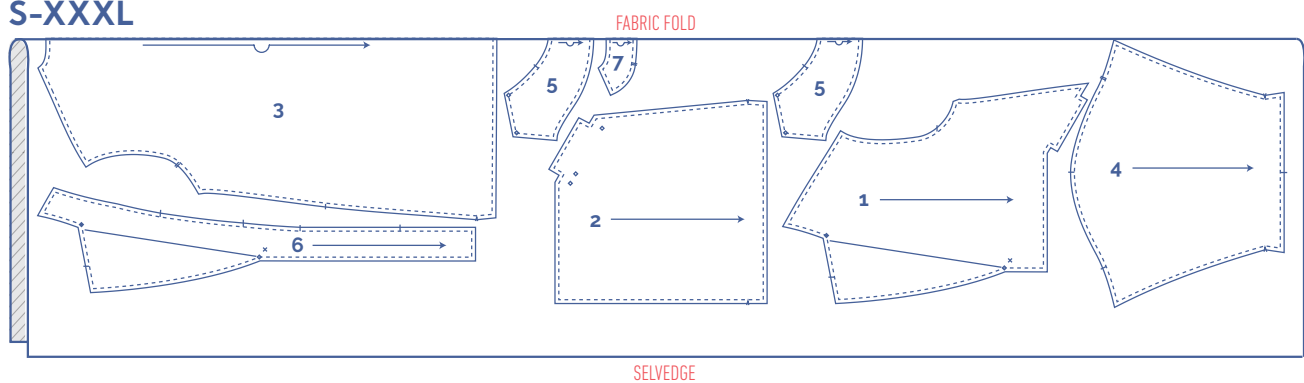
fabric plan

1. for fabrics 140 cm wide

XS

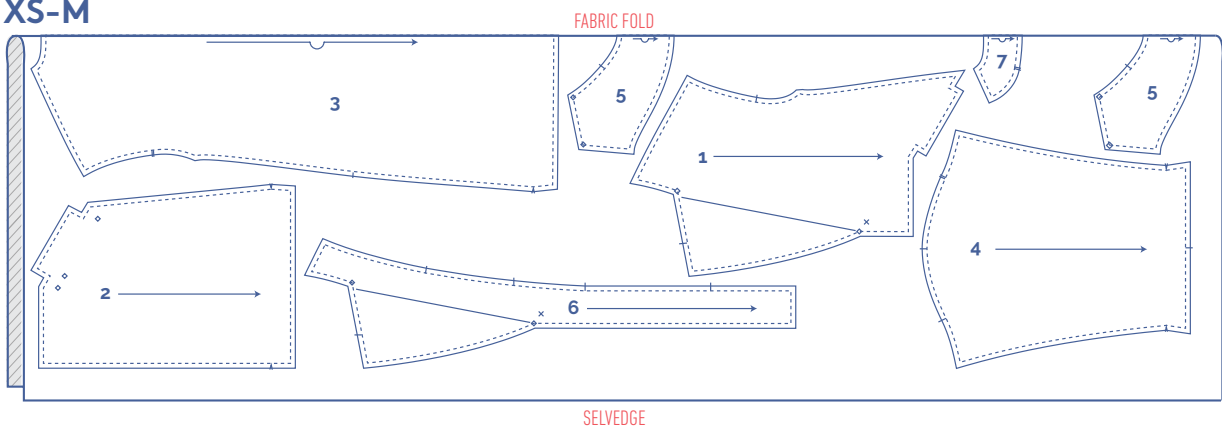


S-XXXL

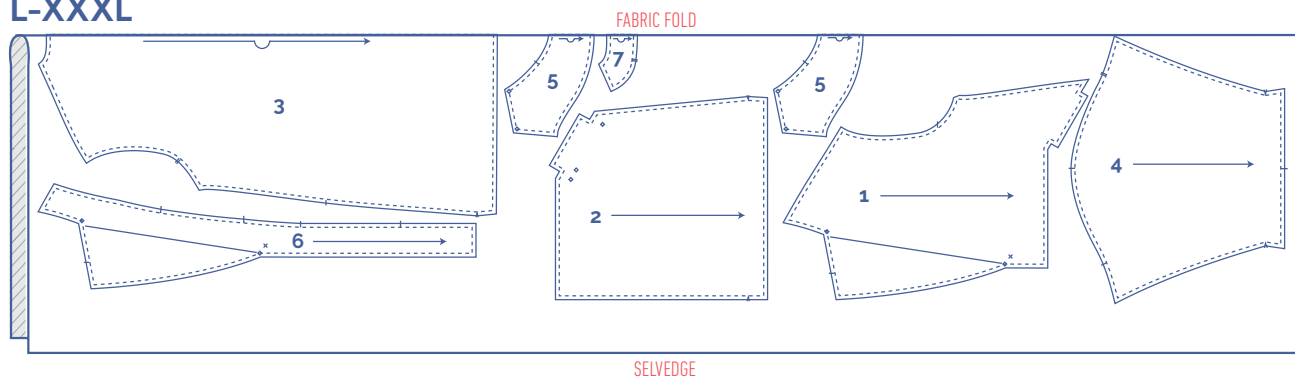


2. for a solid fabric 154 cm wide (= faux fur)

XS-M



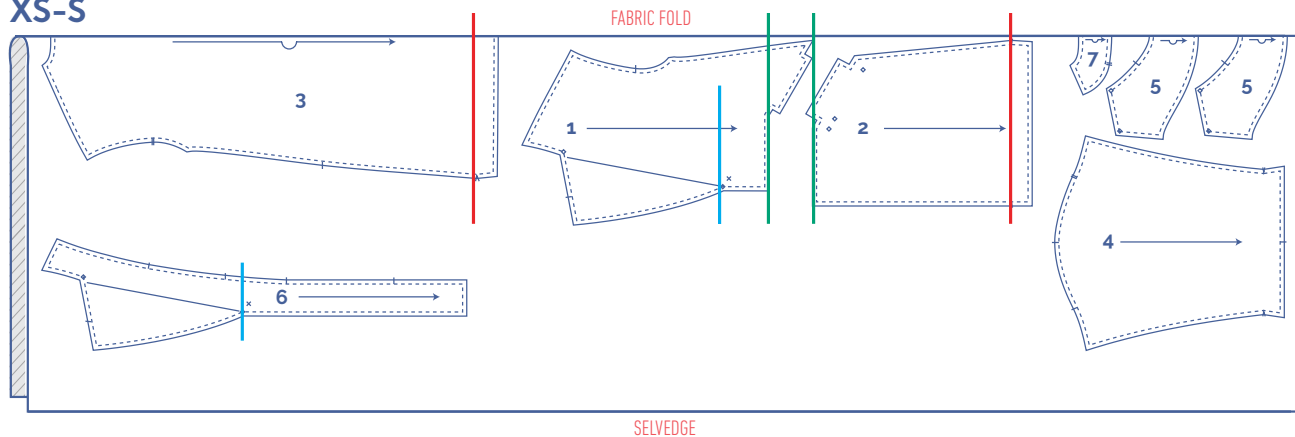
L-XXXL



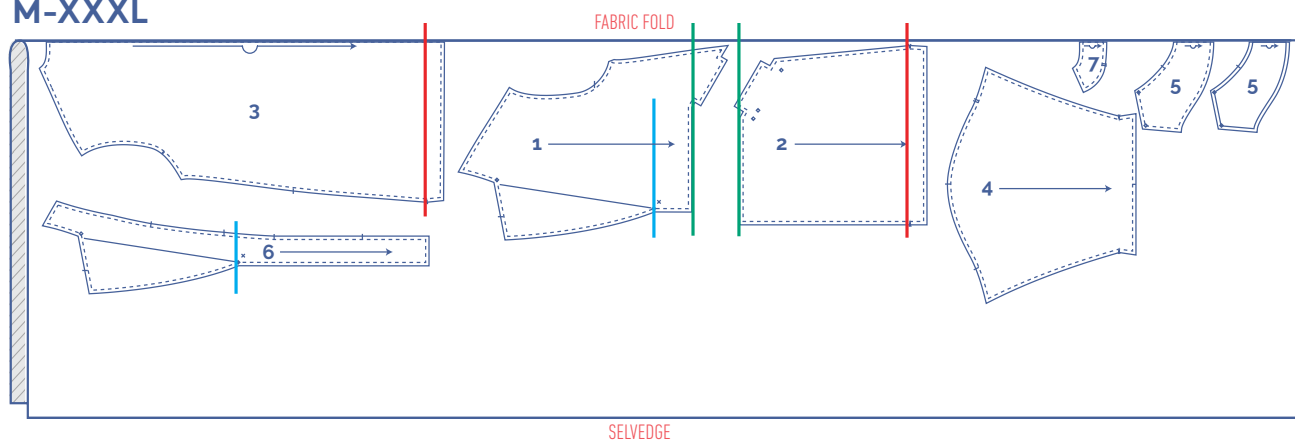
3. for fabrics with a pattern 154 cm wide (= checked pattern)

- pieces 2 and 3 must be laid out evenly on the red line (the finished hem)
- pieces 1 and 2 must be laid out evenly on the green line (the waist seam)
- pieces 1 and 6 must be laid out evenly on the blue line (the connecting point)

XS-S

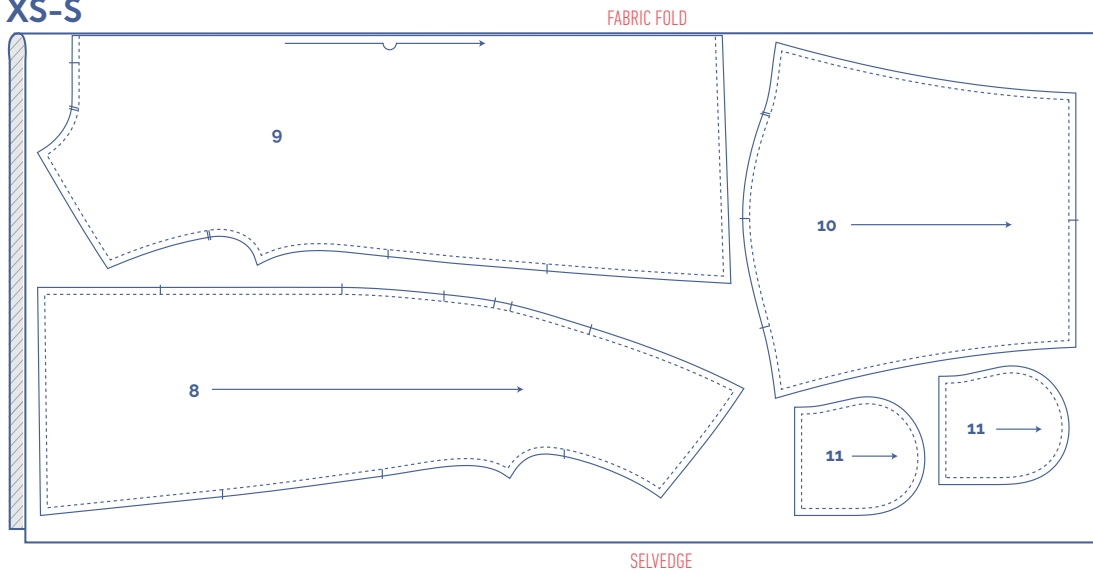


M-XXXL

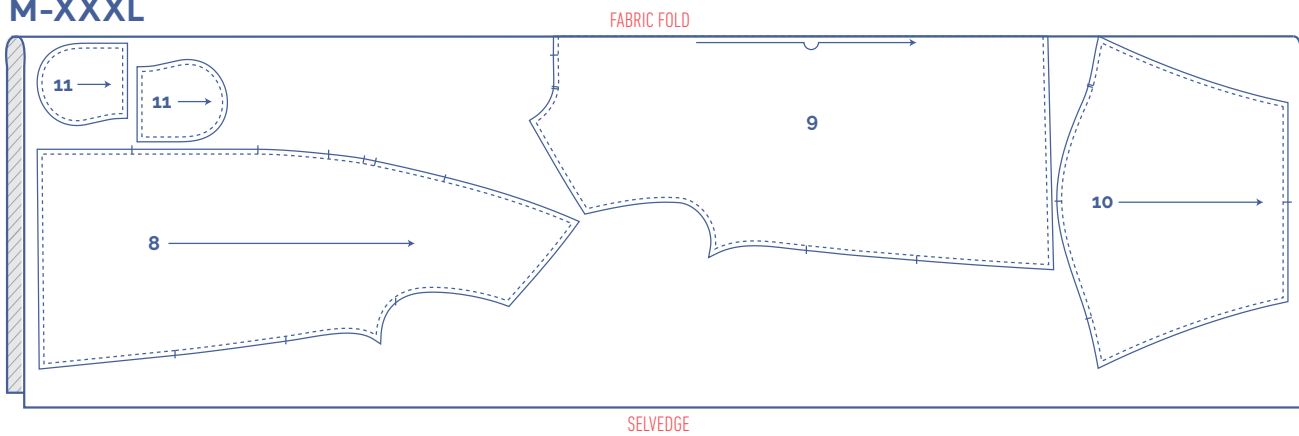


4. for lining 140 cm wide

XS-S



M-XXXL


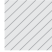





sewing instructions

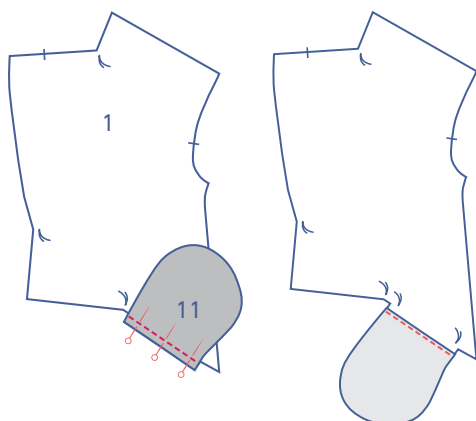


The method used to finish sewing the garment depends on the fabric used. The pieces are always sewn together with the right sides of the fabric matching exactly, unless stated otherwise.

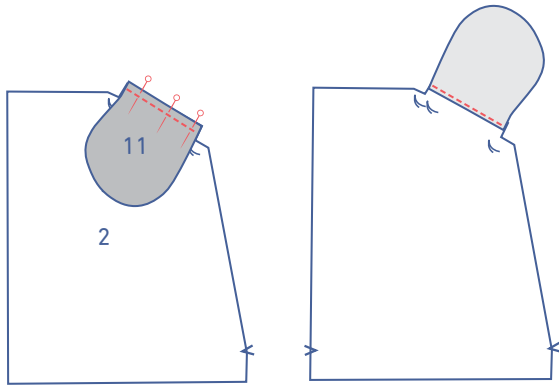
Key with symbols

	→ right side
	→ wrong side
	→ lining right side
	→ lining wrong side
	→ iron-on interfacing
FF	→ front facing
BF	→ back facing
CF	→ centre front
CB	→ centre back

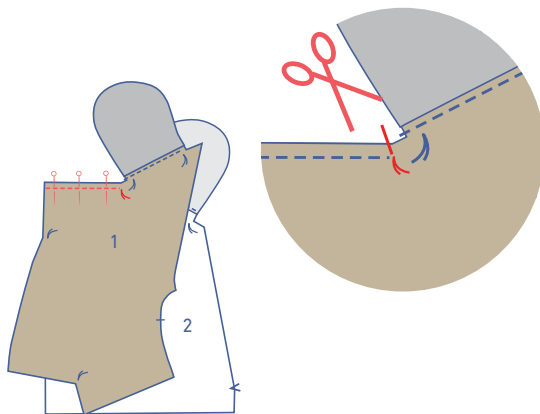
1



Sew 1 pocket piece (11) to the shaped facing of front A (1). Press the seam allowance onto the pocket and stitch at 2 mm from the seam.

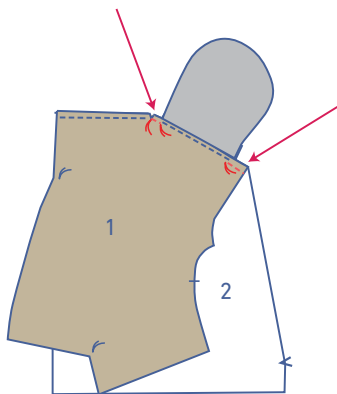


Repeat the same process with the other pocket piece, pressing onto the shaped facing of front B (2).

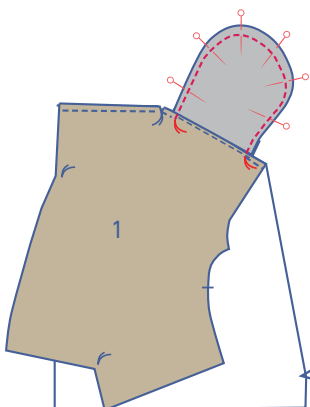


Pin the right side of the FF A and FF B to each other and sew in place starting from the CF up to the basting thread.

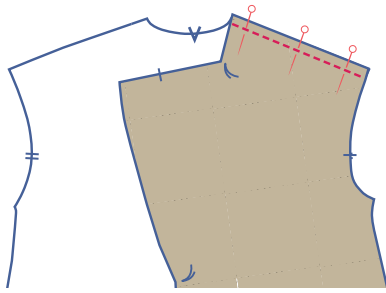
Cut the seam allowance until just before the basting threads.



Turn the FF A so that the slanted seam lies precisely on the FF B. Continue sewing up to the next basting thread. Sew the last piece of the seam in place too, starting at the basting thread and sewing up to the side seam.

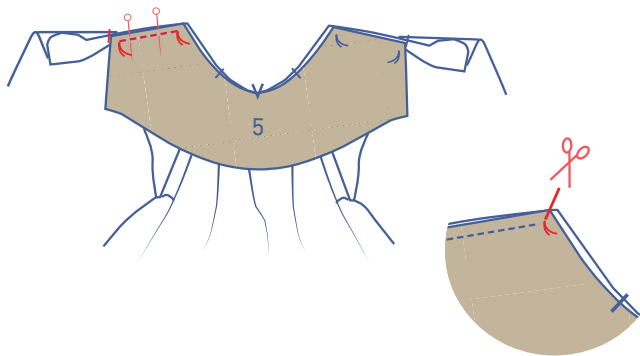


Pin and sew the pocket pieces together between the basting threads.



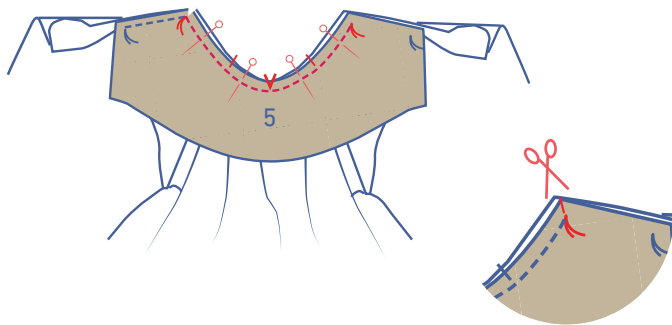
2

Pin and sew the shoulder seams of the FF and BF (3). Press the seams open.

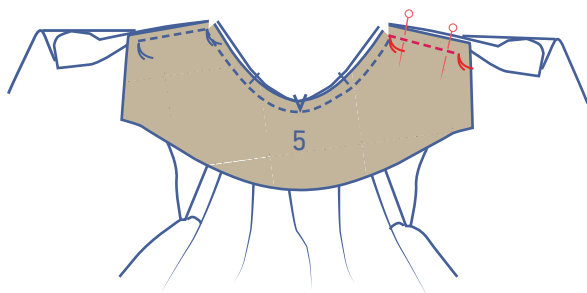


3

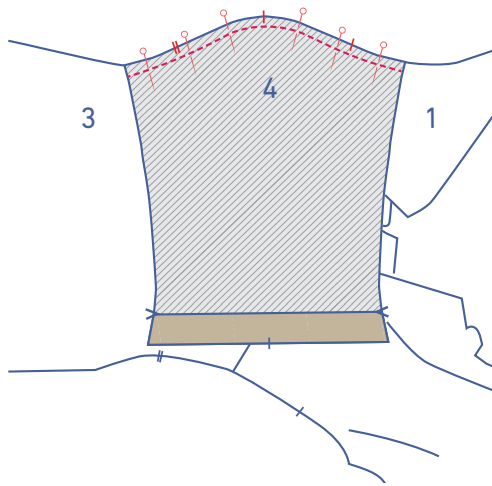
Pin the short side of the collar (5) with the basting threads to the right side of the reverse. The edge of the collar should line up with the nick on the FF A with the basting threads matching exactly. Start at the first basting thread and sew to the second basting thread. Leave the needle there in the fabric. Raise the presser foot and snip the seam allowance until you've nearly hit the needle.



Turn the work piece and allow the presser foot to drop back down. Continue sewing the collar from the neckline up to the next basting thread. Make sure that the markings continue to match. Leave the needle in the fabric again. Snip back through the seam allowance until you've nearly hit the needle.

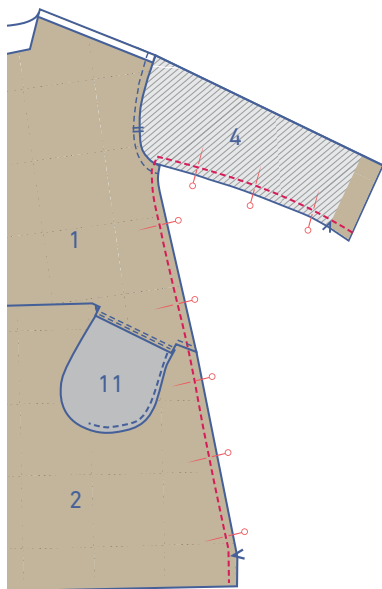


Turn the work piece again and sew up to the last basting seam.



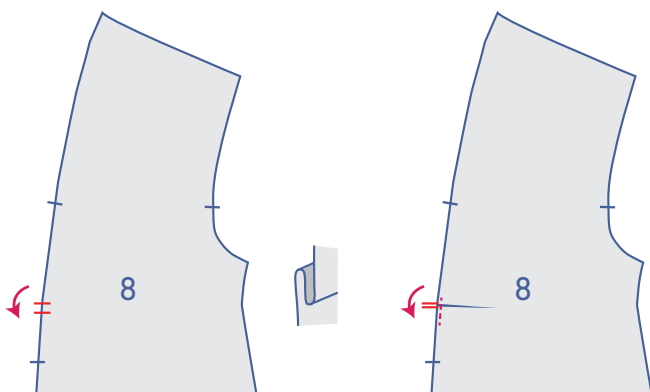
4

Pin and sew the top of the sleeve (4) to the armhole with the markings matching exactly. The single markings refer to the FF, the double the BF, with the topmost single marking indicating the shoulder.



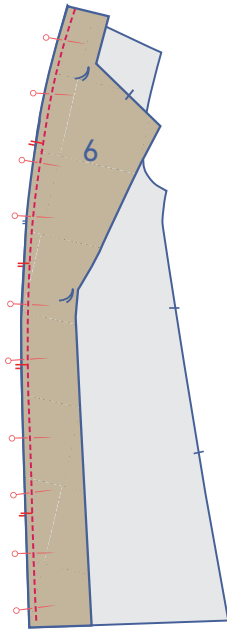
5

Pin the side and underarm seams of the FF and BF into place and sew together.



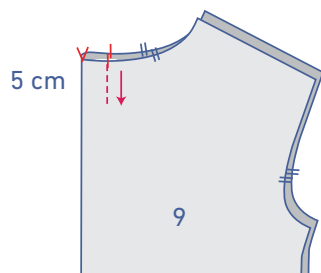
6

Fold the pleat down into the piece of front lining (8) by matching the nicks exactly. Sew together at 0.5 cm from the edge.

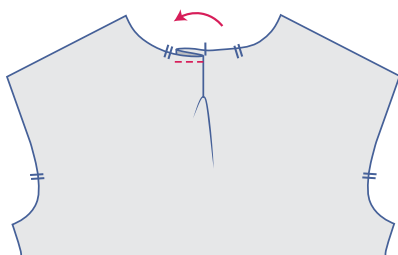


Pin the front facing (6) to the FF lining, matching the markings exactly and then sew together.

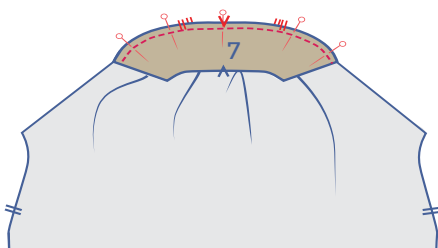
7



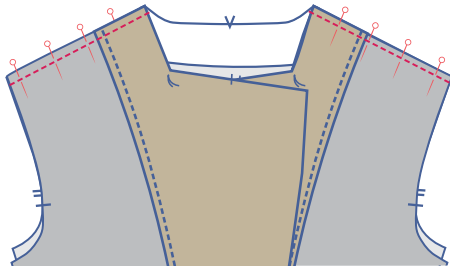
Make the back pleat in the piece of back lining (9) by folding the fabric in half with the nicks lined up. Sew the pleat into place vertically at 5 cm.



Fold the pleat allowance to the left and sew in place at 0.5 cm.

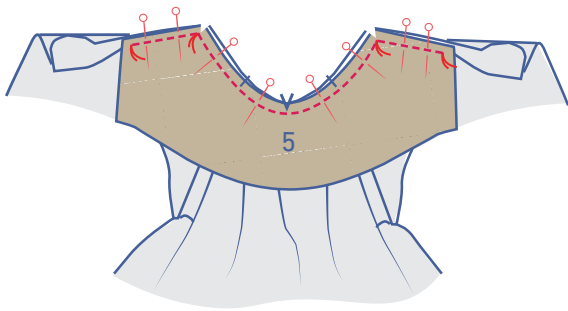


Pin the bottom of the back facing to the top of the back lining with the nicks matching exactly. Sew in place.



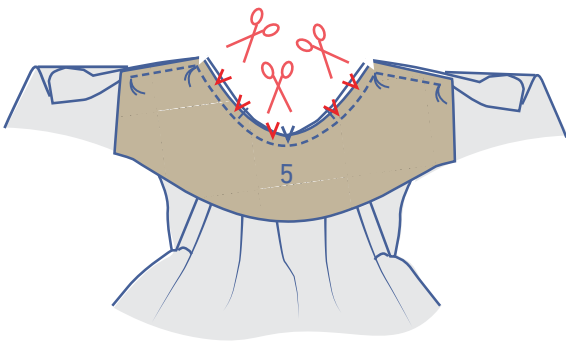
8

Pin and sew the shoulder seams of the FF and the BF of the lining.



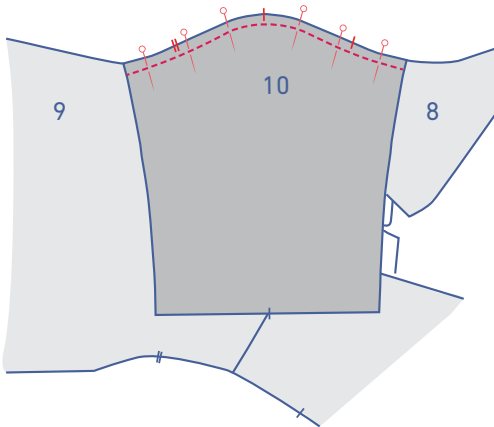
9

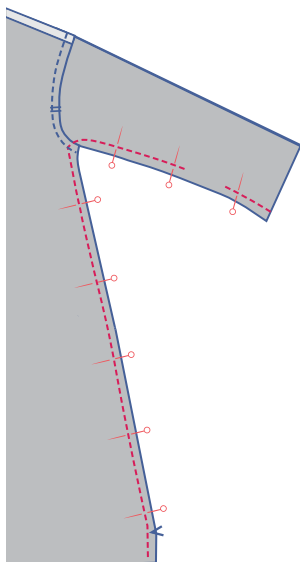
Sew the other collar to the lining the same way you did in step 3.



10

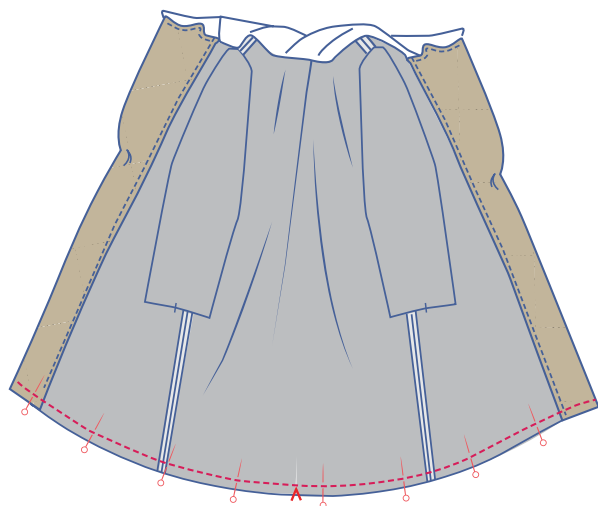
Pin and sew the top of the sleeve lining (10) to the armhole with the markings matching exactly.





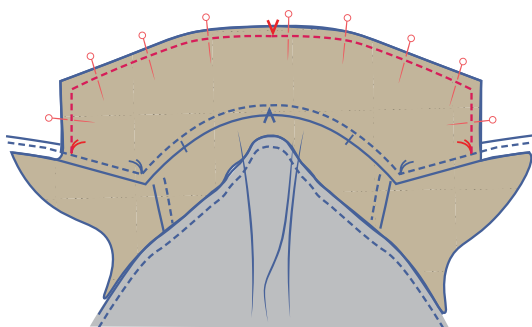
11

Pin the side and underarm seams of the FF and the BF of the lining together and sew in place. Leave an opening for 1 sleeve in the underarm seam so that the work piece can be turned later on.

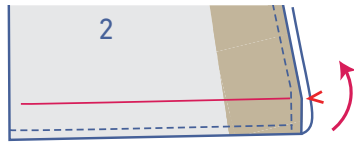


12

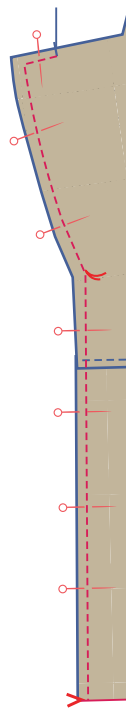
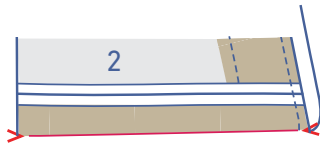
Pin the hem of the lining and the fabric part of the jacket together and sew in place.



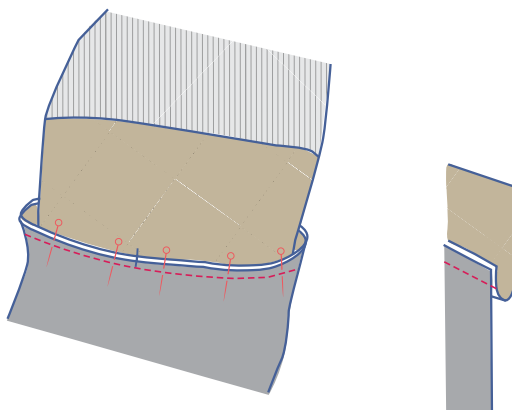
Pin both collars to each other and sew securely in place, working your way from one basting thread to the next.



Fold the hem of the jacket over (to the front) to the V notches and pin the CF lines to each other.

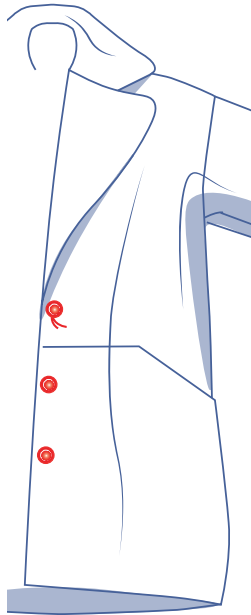


Sew in place from the hem up to the basting thread at the collar.



Put the lining sleeves inside the fabric sleeves (as these would be in a finished jacket) and take hold of the hem of the fabric and lining sleeves so that the right sides of the fabric are facing each other.

Pull both layers through the opening in the sleeve. Pin around the sleeve hems, making sure that the nicks are perfectly matched. Sew in place. Turn inside out.



Use a chain stitch (= leaving a space between the two layers by not pulling the double thread used to sew completely taut) to sew the lining to the jacket fabric at the underarm, the side seams and the shoulder seams.

Sew the hem into place.
Sew or stitch the opening in the lining sleeve closed and then sew the snaps on at the indicated places.