

Ricco by Fibre ⚡ood



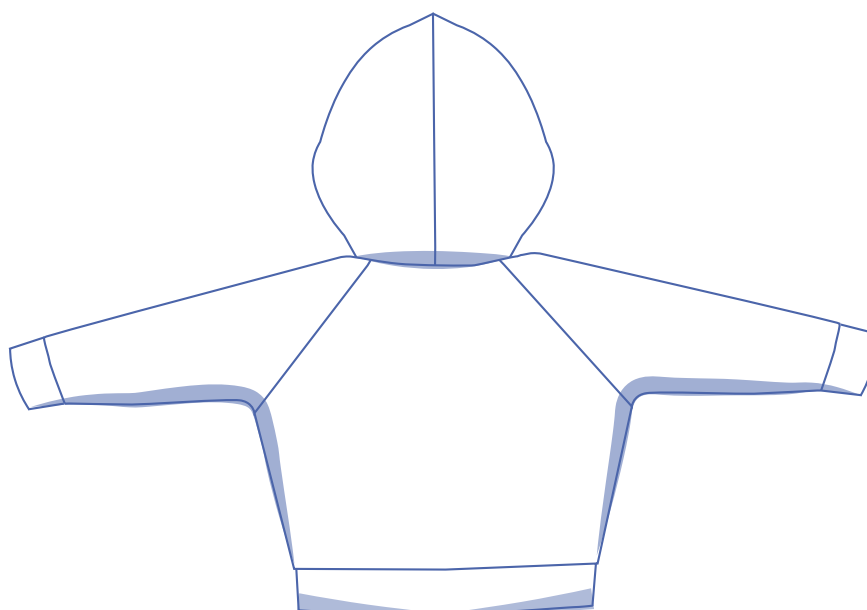
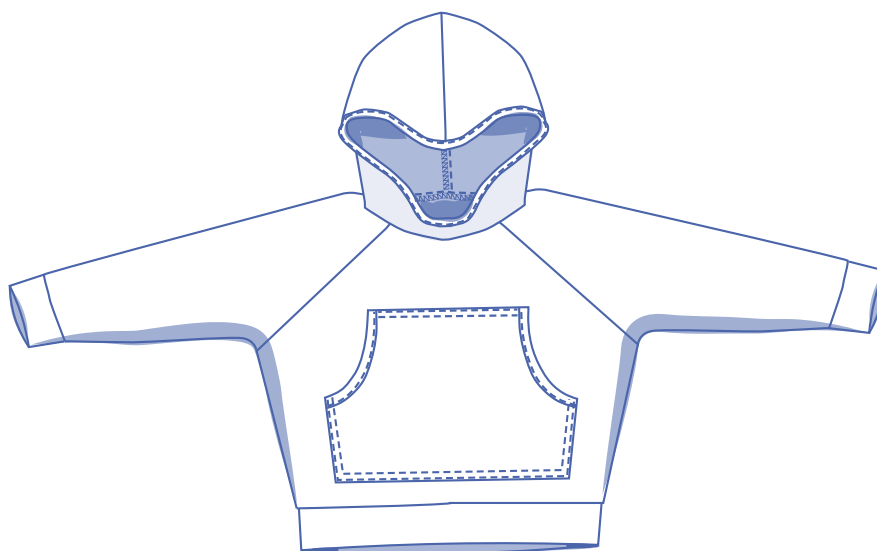
Ricco by Fibre ⚡ood



1 - 18 months

2 - 14 years

Relaxed hoodie with kangaroo pocket.

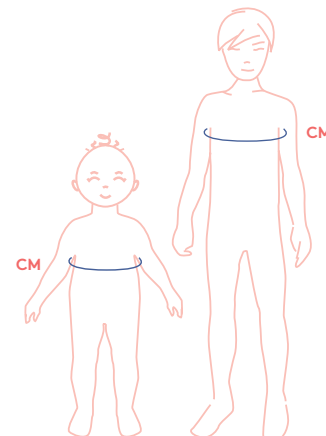


sizing chart

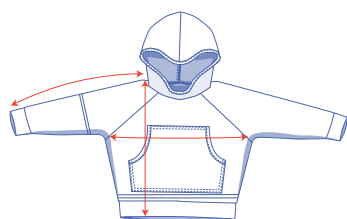
size (months)	1	3	6	9	12	18
CM (cm)	45	46	47	48	49	50

size (year)	2	3	4	5	6	8	10	12	14
CM (cm)	52	54	56	58	60	64	68	72	76

Chest measurement (CM): Measure horizontally at the widest point of the bust.



measurements



size (months)	1	3	6	9	12	18
length (cm)	26.25	27.75	30	31.5	34	35.75
1/2 chest size (average, cm)	31.25	32.25	33.25	34.25	35.25	36.25
sleeve length* (cm)	20	21.5	23.5	25	27.5	29

size (year)	2	3	4	5	6	8	10	12	14
length (cm)	23	24	25	25.25	25.75	27.75	29.75	31.75	33.75
1/2 chest size (average, cm)	37.25	38.25	39.25	40.25	41.25	43.25	45.25	47.25	49.25
sleeve length* (cm)	34	37	39.75	42.75	45.5	49	52.5	56.25	60.25

* The sleeve length includes the shoulder length and the wrist trim.

IMPORTANT

Adapt the amount of fabric used to the alterations that you are making to the pattern!

Compare the stated lengths to the measured or desired lengths. **Lengthen** or **shorten** the hoodie and/or the sleeves by cutting the pattern pieces at the indicated double lines and then spreading the pattern pieces out X cm from each other or overlapping them where needed. Make sure that the CF and CB lines and the side seams are always straight.



supplies



- Thread
- Fabric: see table

size (months)	1	3-6	9	12-18
fabric* (cm)	125	130	135	140

size (year)	2	3	4	5-6	8	10	12	14
fabric* (cm)	155	160	165	170	175	180	185	195

* 136/140 cm wide

fabric advice

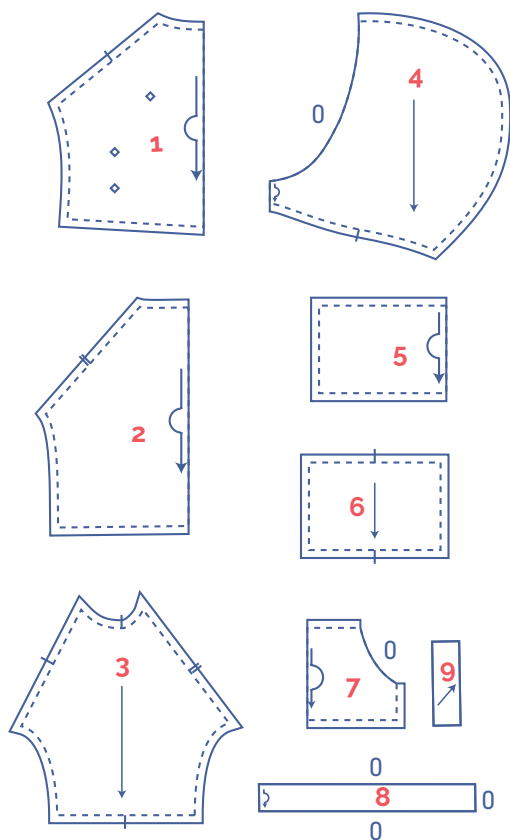


The Ricco hoodie should be made in jersey, such as French terry cloth, sweater fabric, Ponte Roma, etc.

pattern pieces & seam allowances (in cm)

Draw 1 cm all the way around the paper pattern pieces unless stated otherwise in the illustrations.

The sides of pieces 1, 2, 4, 5, 7 and 8 on the fabric fold (—>) do not have any seam allowance.



- 1 front: 1x
- 2 back: 1x
- 3 sleeve: 2x
- 4 hood: 1x on fabric fold
- 5 cuffs: 2x on fabric fold
- 6 wrist trim: 2x
- 7 pocket: 1x on fabric fold
- 8 hood bias: 1x on fabric fold
- 9 pocket opening bias: 2x

Indicate important points on the outline of the pattern:

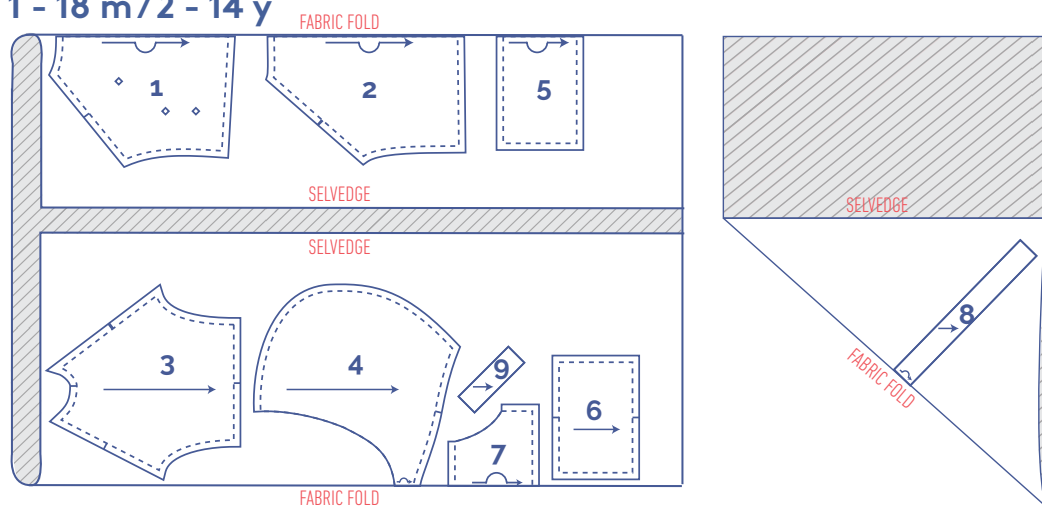
- Nick the pattern paper and fabric at the places where a single vertical line (|) and double vertical lines (||) are indicated.
- Cut a small corner (V) out of pieces 1, 2, 4, 5, 7 and 8, which lie on the fabric fold, to mark the middle of these pieces.

Mark the centre of the place for the pocket (◇) on piece 1 using needle and thread.

fabric plan

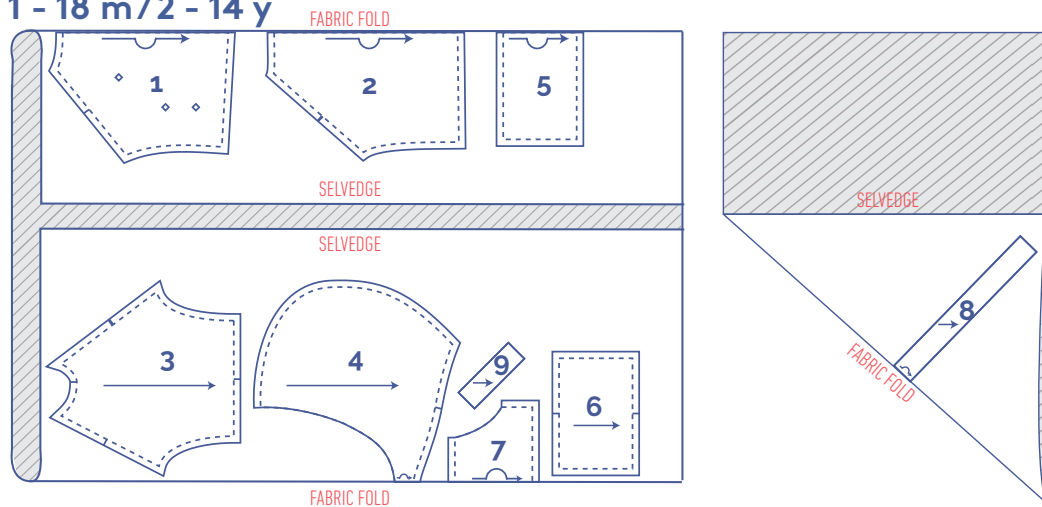
1. for standard fabrics 140 cm wide

1 - 18 m/2 - 14 y



2. for rabbit print fabric 136 wide

1 - 18 m/2 - 14 y



Fold the fabric in such a way that you get two folds of fabric, so that pieces 1, 2, 4, 5, and 7 can be cut on the fabric fold. Pieces 3, 6 and 9 do not lay on the fabric fold.


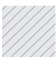
Refold the remaining fabric in half by folding a tip of the fabric diagonally. Place the hood bias (8) against the fabric fold and cut it out.

sewing instructions

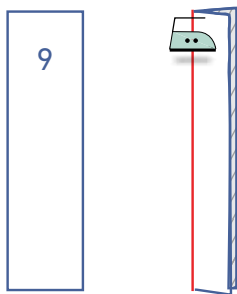


The method used to finish sewing the garment depends on the fabric used. The pieces are always sewn together with the right sides of the fabric matching exactly, unless stated otherwise.

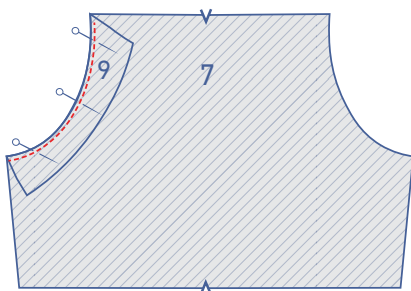
Key with symbols

-  → right side
-  → wrong side
- FF** → front facing
- BF** → back facing

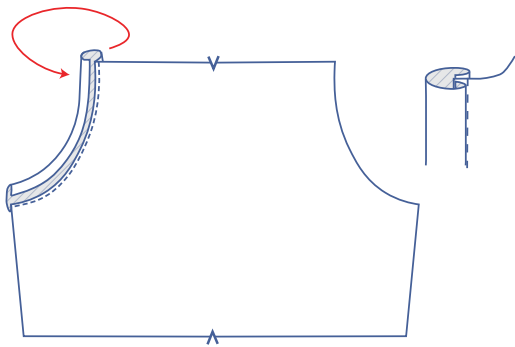
1



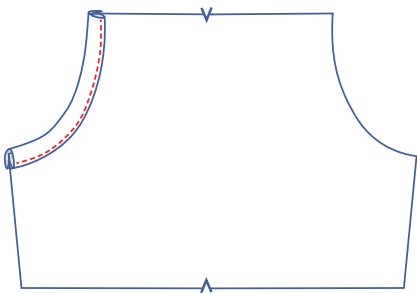
Press the pocket opening bias (9) in half with the right side facing outward.



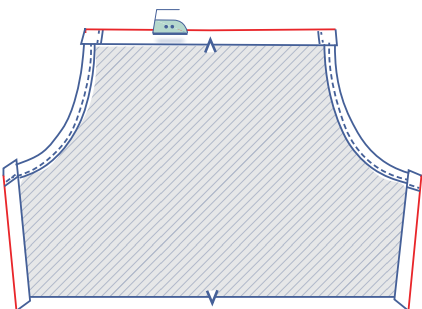
Pin the bias with the right side folded over onto the wrong side of the pocket opening (7). Sew into place at 0.5 cm.



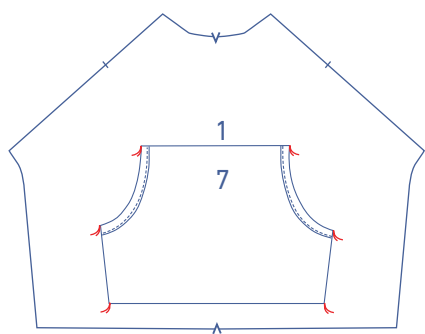
Fold the raw edge of the bias up to the pressed fold line and fold the bias in half so that both halves of the bias fold over the seam of the pocket opening.



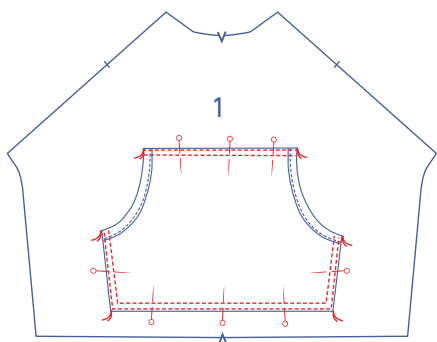
Place the folded edge of the bias directly onto the stitching and sew into place right next to the edge.

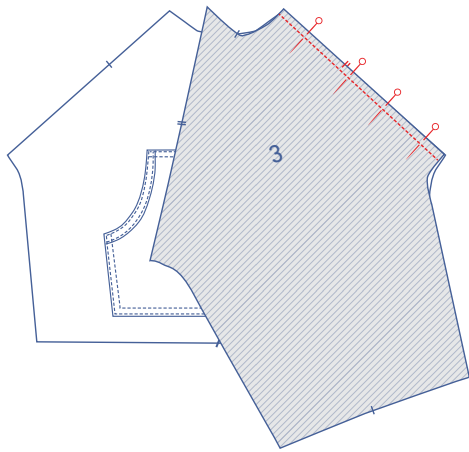


Press the remaining sides 1 cm over onto the wrong side.



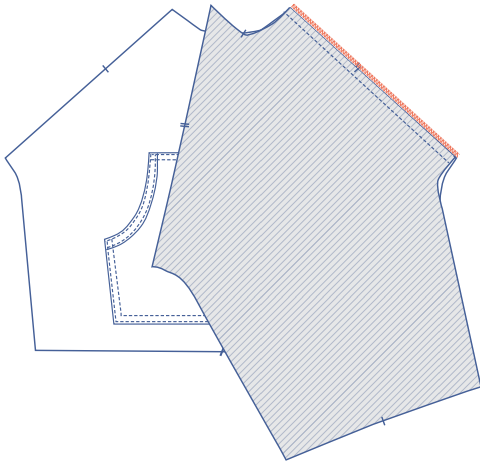
Pin the pocket at the place indicated on the FF (1) and sew in place right next to the edge. Use edge stitching to sew a second line of stitching alongside the first.



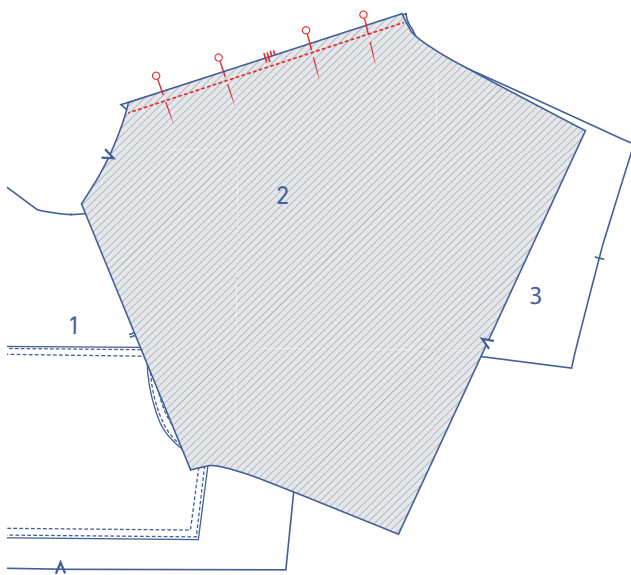


2

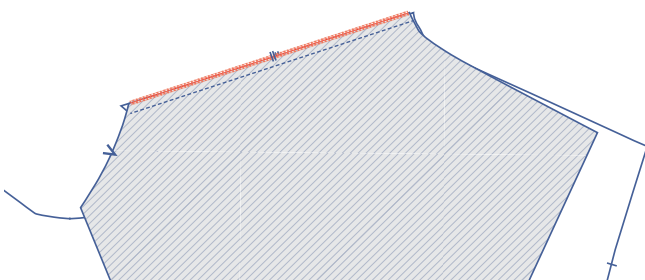
Pin the slanted side of the sleeve (3) to the FF (1) with the single nicks matching and sew in place.



Finish the raw edges together using an overlock stitch.

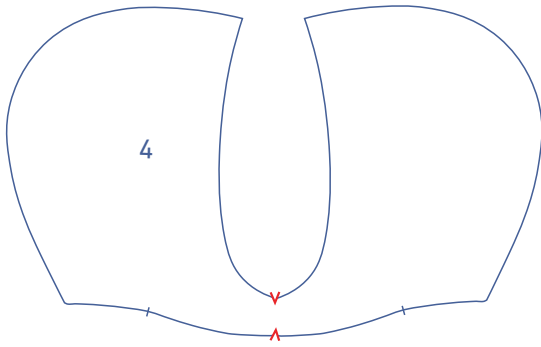


Pin the back of the sleeve (3) to the BF (2) with the double nicks matching and sew in place.

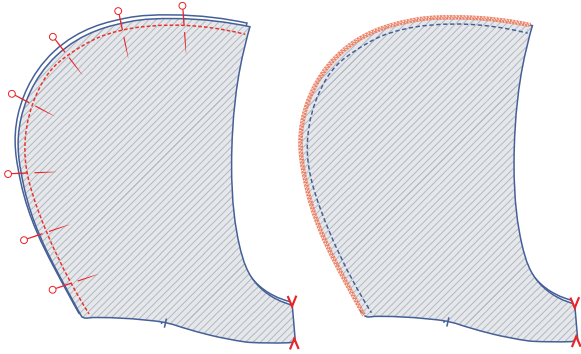


Finish the raw edges together using an overlock stitch.

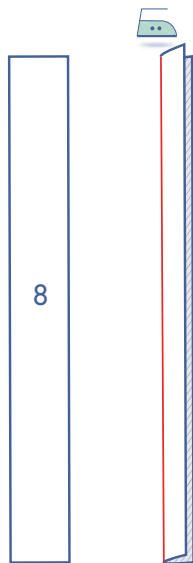
3



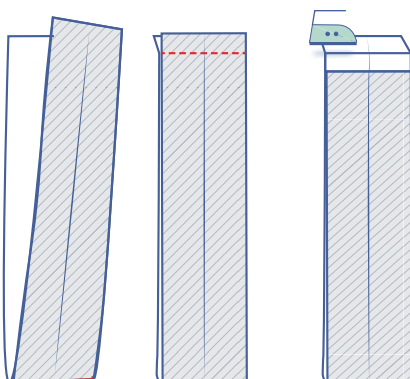
Fold the hood (4) in half with the right side of the fabric facing inward to where the V notches are.



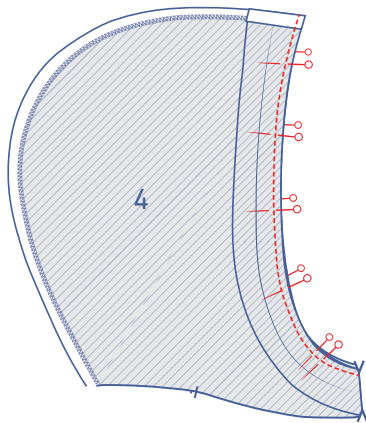
Pin the outside curved edges together and sew in place. Finish the raw edges together using an overlock stitch. Press the seam allowance toward one side.



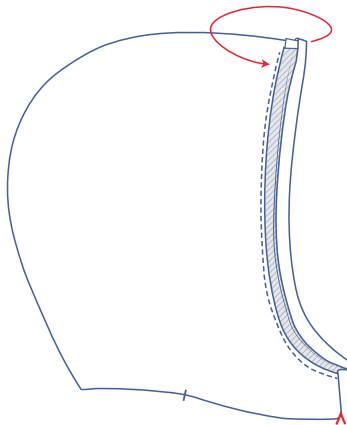
First press the hood bias (8) in half lengthwise with the right side facing outward. Next, open it back up to get a fold line that extends the full length of the piece.



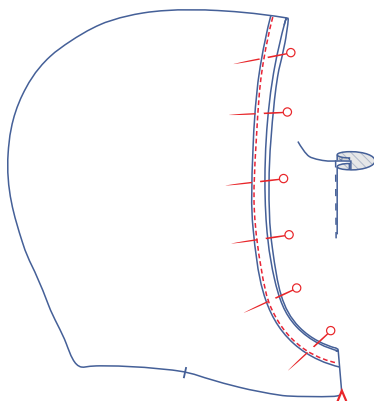
Now fold the bias in half in the other direction (crosswise) with the right sides facing each other. Sew the short side. Press the seam allowance open.



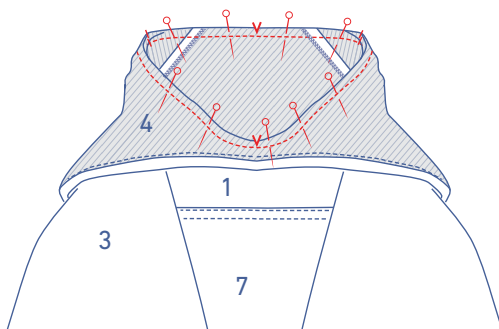
Pin the long side of the bias with the right side onto the wrong side of the hood with the V notches matching exactly. The seam of the bias should match the seam of the hood. Sew into place at 0.5 cm.



Fold the raw edge of the bias against the pressed fold line and fold the bias in half so that both halves of the bias fold over the seam of the hood.

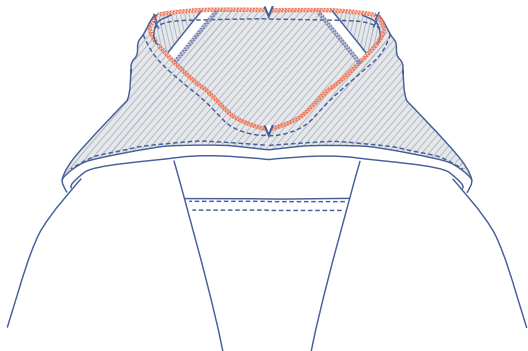


Place the folded edge of the bias directly onto the stitching and sew into place right next to the edge.



4

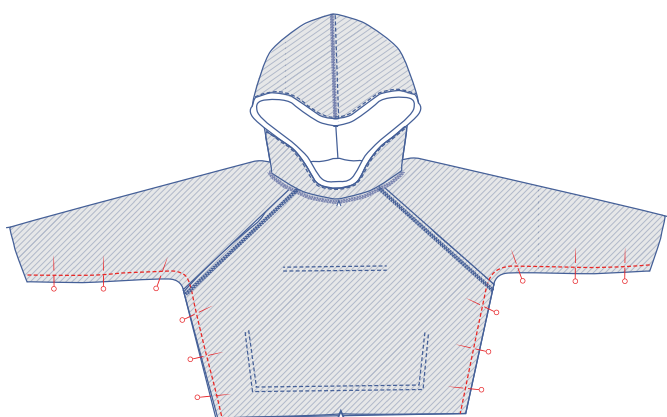
Pin and sew the neckline of the hood to the work piece neckline, making sure that the nicks match.



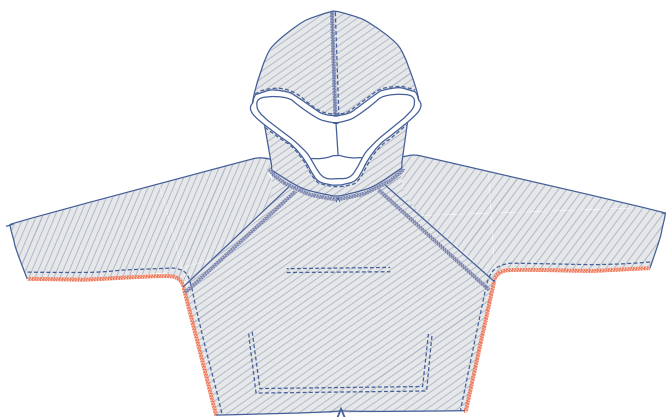
Finish the raw edges using an overlock stitch.

5

Pin and sew the side and underarm seams into place.

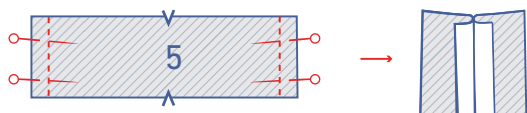


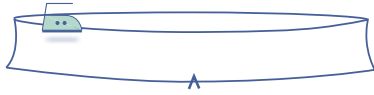
Finish the raw edges using an overlock stitch. Press the seam allowances to the front.



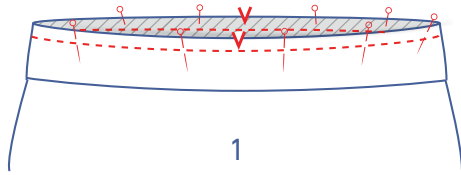
6

Pin the side seams for both sides of the hem band (5) together and sew in place, pressing the seams open each time.

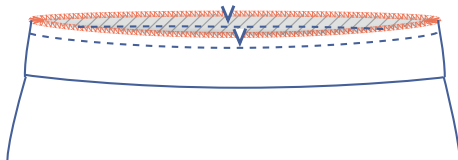




Fold the hem band in half lengthwise and press with the right side facing out.

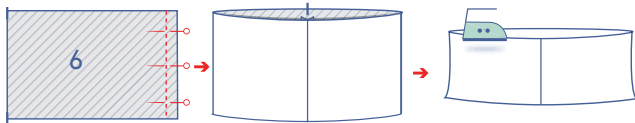


Pin the raw edges of the hem to the hem band with the V notches matching the side seams. The cuff will be smaller than the hem. Stretch the cuff to match the hem.

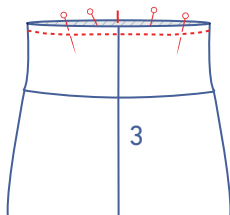


Sew into place and finish the edge using an overlock stitch.

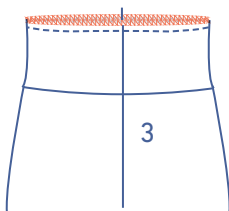
7



Fold the wrist trims (6) in half with the right side of the fabric facing inward and sew the short side. Press the seam open. Fold the wrist trim in half in the other direction.



Pin and sew the wrist trims to the sleeve hem, matching the side seams to the corresponding nicks. Stretch the wrist trim to match the sleeve hem.



Finish the raw edges using an overlock stitch.