

Goldie by Fibre ⚡ood

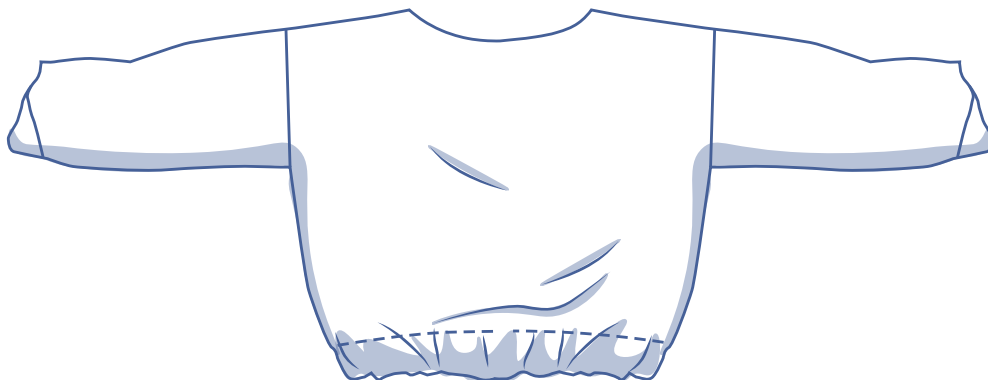
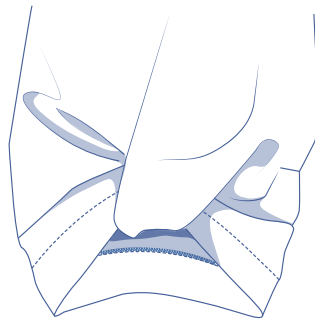
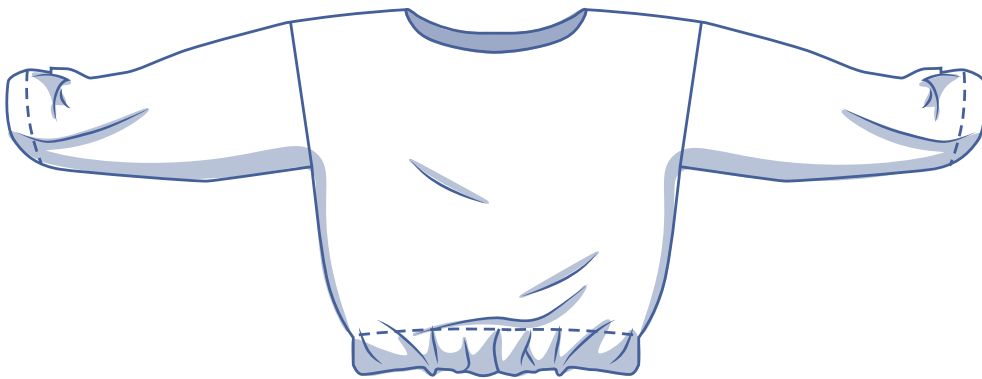


Goldie by Fibre Mood



2 - 14 years

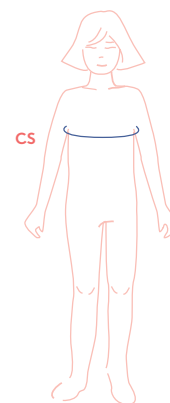
Loose-fitting, round neck girl's top with snap closure at one shoulder, dropped shoulders and an elasticated hem. Sleeve with decorative fabric button at the wrist.



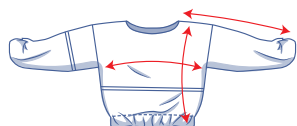
sizing chart

size (year)	2	3	4	5	6	8	10	12	14
CS (cm)	52	54	56	58	60	64	68	72	76

Chest size (CS): Measure horizontally at the widest point of the bust.



measurements



size (year)	2	3	4	5	6	8	10	12	14
length (cm)	35.25	37.25	39.25	40.25	41	45	49	53	57
sleeve length (cm)	30.5	34.5	38.25	42	45	49.25	54.25	59	64
1/2 CS (cm)	36.25	37.25	38.25	39.25	40.25	42.25	44.25	46.25	48.25

Compare the stated lengths to the measured or desired lengths. **Lengthen** or **shorten** the top and/or the sleeves by cutting the pattern pieces at the indicated double lines and then spreading the pattern pieces out X cm from each other or overlapping them where needed. Make sure that the CF and CB lines and the side seams are always straight.



IMPORTANT

Adapt the amount of fabric used to the alterations that you are making to the pattern!

supplies



- Thread
- Snaps (ø 9 mm): 3
- Iron-on interfacing: max. 25 cm
- Light cotton: max 20 cm
- Elastic band: see table
- Fabric: see table

size (year)	2	3	4	5	6	8	10	12	14
elastic* (cm)	56	58	60	62	64	68	72	76	80

* 3 cm wide

size (year)	2	3-4	5-6	8	10	12-14
fabric* (cm)	115	130	140	155	165	190

* 140 cm wide

size (year)	2-3	4	5-6	8	10	12	14
fabric* (cm)	95	100	110	120	165	175	185

* 164 cm wide

fabric advice

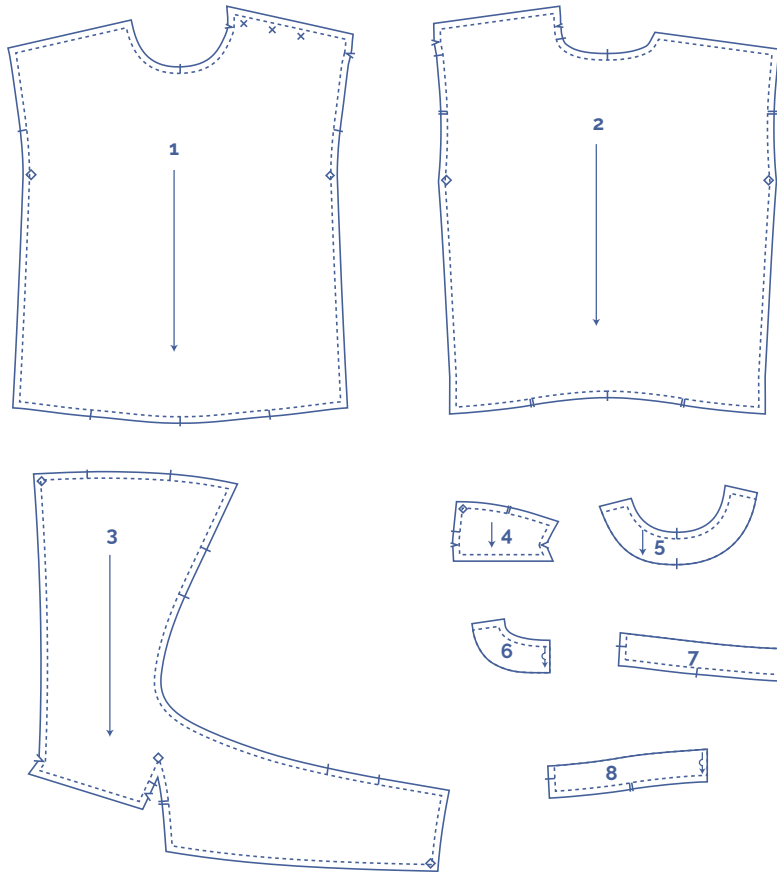


French terry cloth, sweater knit fabric or Ponte Roma are recommended for the Goldie top. We used a glitter knit jersey.

pattern pieces & seam allowances (in cm)

Draw 1 cm all the way around the paper pattern pieces unless stated otherwise in the illustrations.

The sides of pieces 6, 7 and 8 on the fabric fold (—↪) do not have any seam allowance.



- 1 front: 1x
- 2 back: 1x
- 3 sleeve A: 2x
- 4 sleeve B: 2x
- 5 neckline facing front: 1x
- 6 neckline facing back: 1x on fabric fold
- 7 hem facing front: 1x on fabric fold
- 8 hem facing back: 1x on fabric fold

Indicate important points on the outline of the pattern:

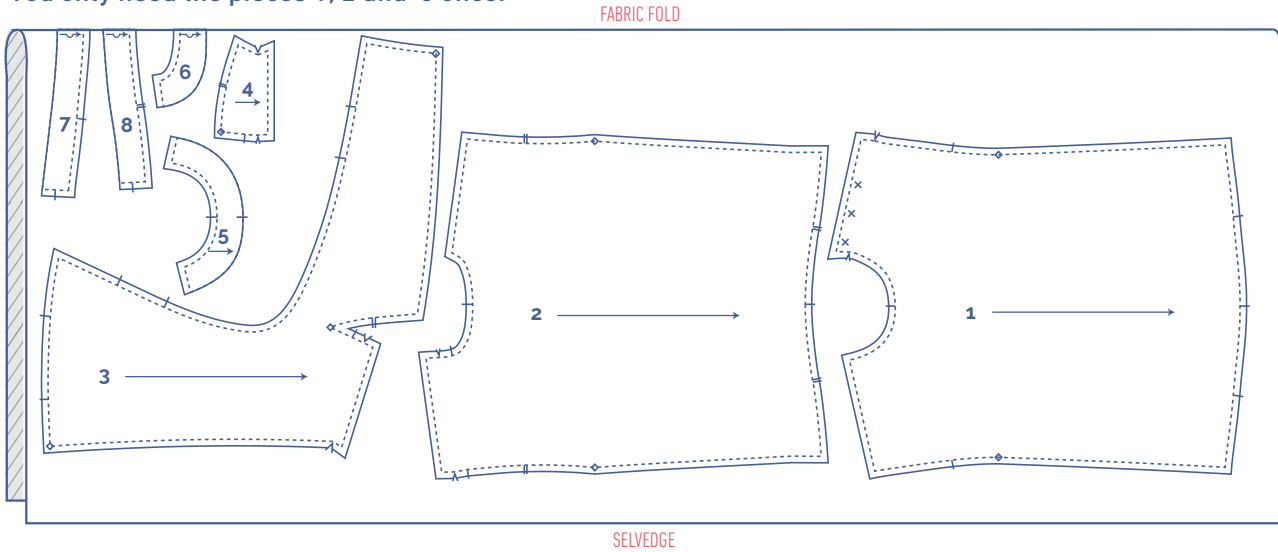
- Nick the pattern paper and fabric at the places where a single vertical line (I) and double vertical lines (II) are indicated.
- Cut a small corner (V notch) out of pieces 6, 7 and 8, which lie on the fabric fold to mark the middle of these pieces.

Mark the place for the armhole on 1 and 2 (◇), where the split ends on 3 (◇) and the reinforcement triangle on the right side of 4 (◇) using needle and thread.

fabric plan

1. for fabric 140 cm wide

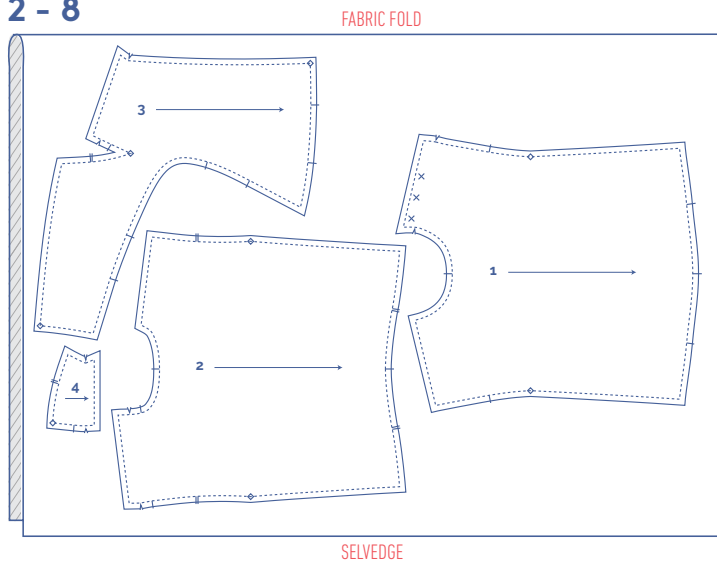
You only need the pieces 1, 2 and 5 once.



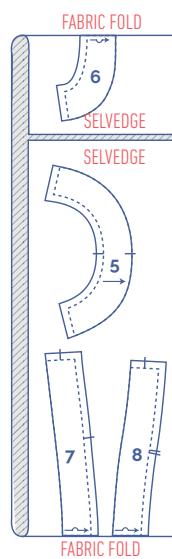
2. for glitter knit jersey 164 cm wide

- We cut the neck facing and hem facing pieces using cotton because glitter knit jersey feels a little scratchy on the skin.
- You only need the pieces 1, 2 and 5 once.

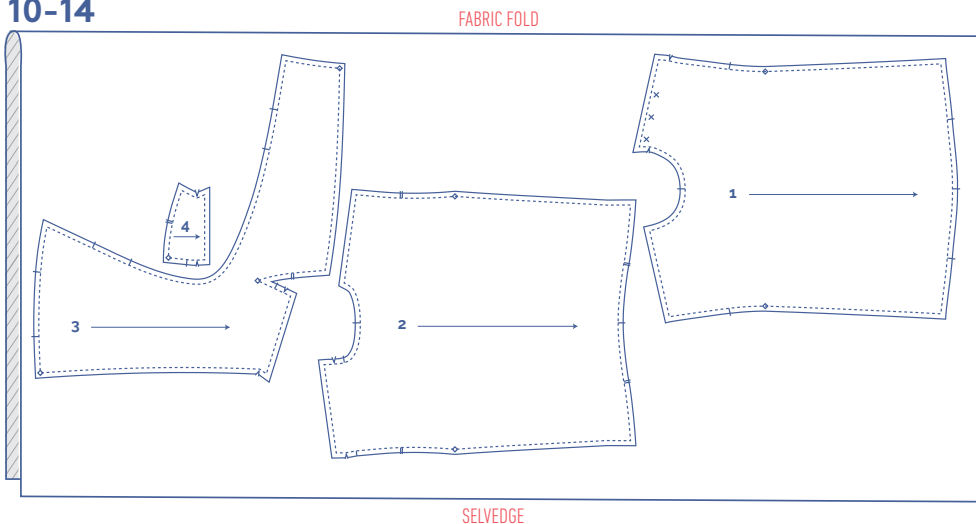
2 - 8



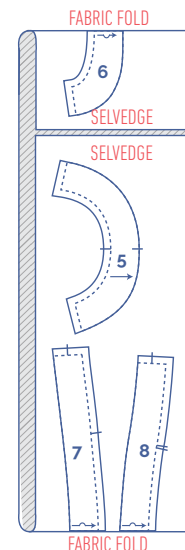
for cotton 140 cm



10-14



for cotton 140 cm


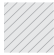

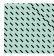


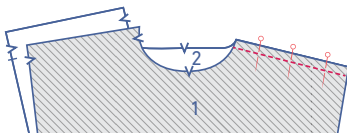
sewing instructions



The method used to finish sewing the garment depends on the fabric used. The pieces are always sewn together with the right sides of the fabric matching exactly, unless stated otherwise.

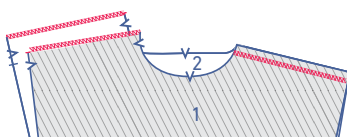
Key with symbols

-  → right side
-  → wrong side
-  → iron-on interfacing
-  → elastic band
- F** → front
- B** → back
- LF** → left front
- LB** → left back

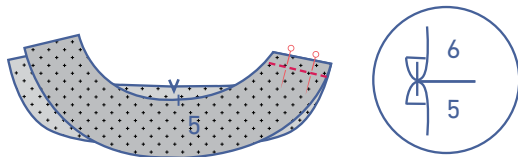


1

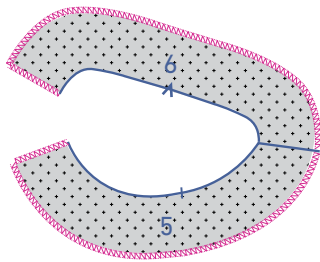
Pin the front (1) and back (2) to each other and sew the shoulder seam on the right-hand side.



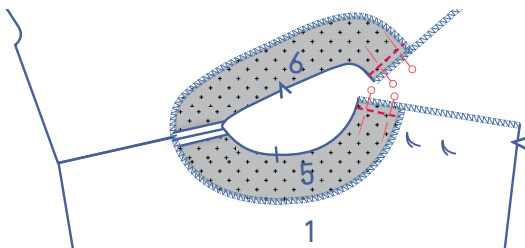
Finish the raw edges together using an overlock stitch and press the seam allowance to the front (F). Overlock the other shoulder seams separately.



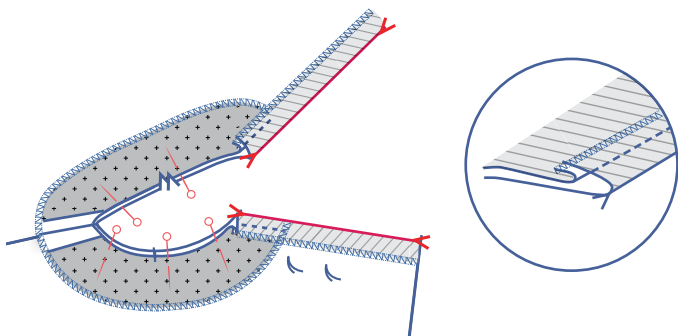
Pin the pieces of the neckline facing (5 and 6) to each other and sew the shoulder seam on the right-hand side. Press the seam allowance open.



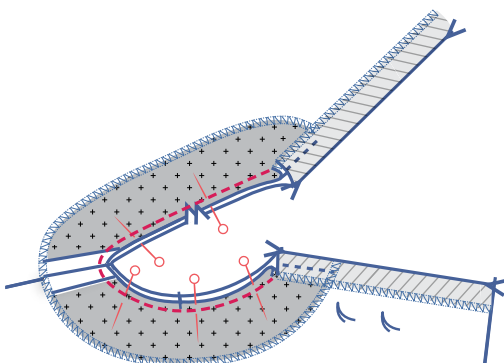
Overlock the shoulder seams on the left-hand side and the bottom of the neckline facing.



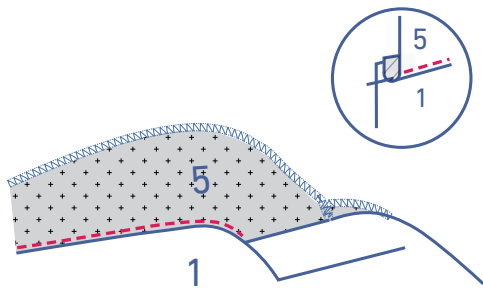
Pin the shoulder seams of the neckline facing to the shoulder seams of the left front and left back pieces.



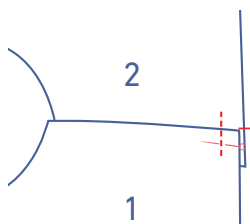
Now press the shaped facing of the left front piece towards the right side of the front piece at the V notches. The neckline facing will shift up at the same time. Repeat these steps for the right piece.



Pin and sew the necklines of the combined facing and the work piece to each other.

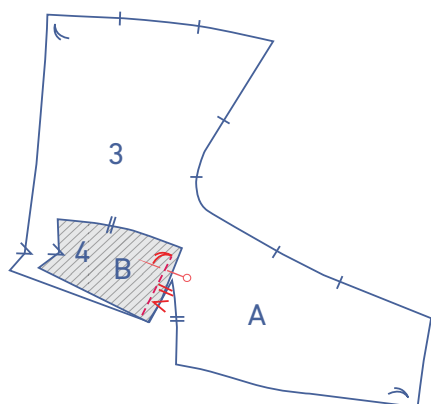


Fold the neckline facing and the seam allowance out of the way and sew the facing into place at 2 mm from the seam through all the layers of fabric. Then fold the facing all the way over to the wrong side and push out the corners completely.

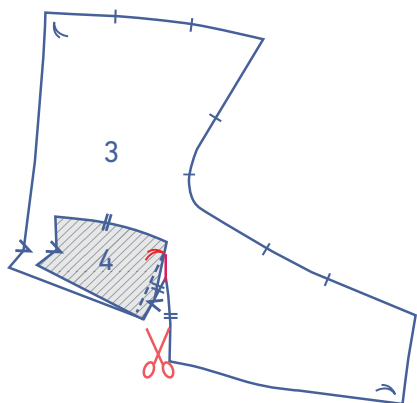


Pin the front to the back with the fold line for the left shoulder matching the nick in the back. Sew together at the armhole at 0.5 cm from the edge.

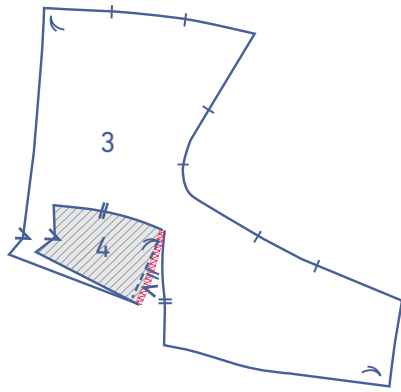
2



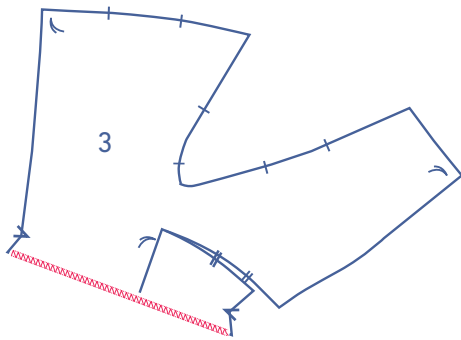
Pin and sew the right side of sleeve B (4) which has a single nick and V notch to the right side of sleeve A (3) that also has a single nick and V notch up to the basting thread.



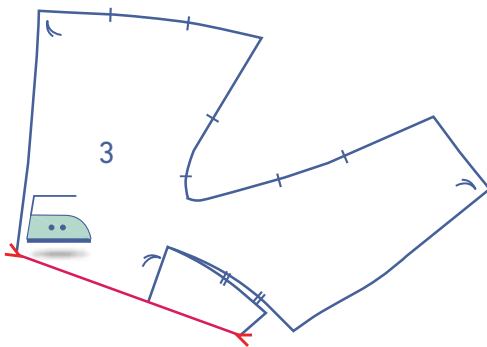
Fold the seam allowance of sleeve B out of the way and snip into the seam allowance up to the basting thread.



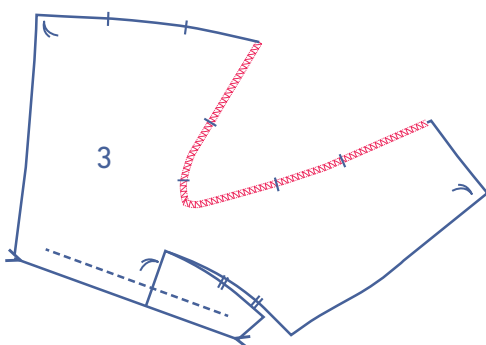
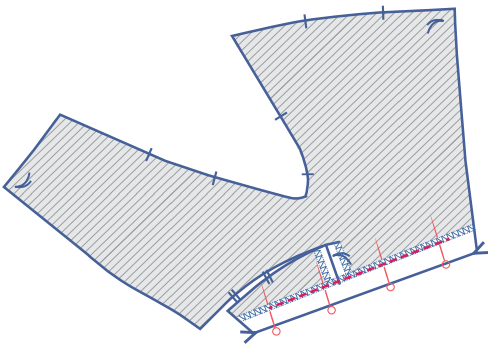
Finish the seam using an overlock stitch. Fold sleeve B back out of the way.



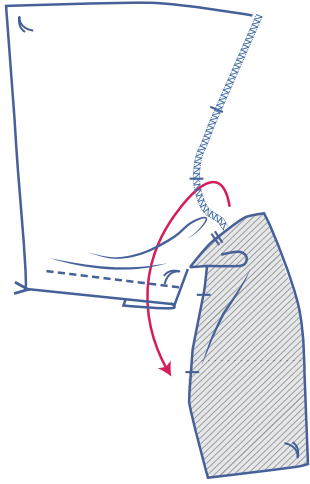
Finish the hem using an overlock stitch.



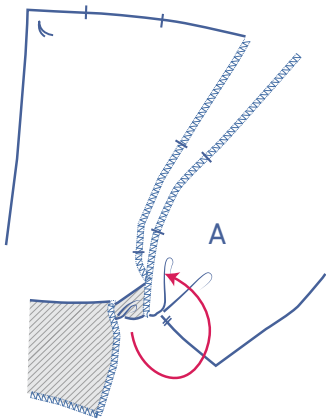
Press the hem allowance onto the wrong side and sew the centremost part in place. For the time being, the sides will be left unsewn.



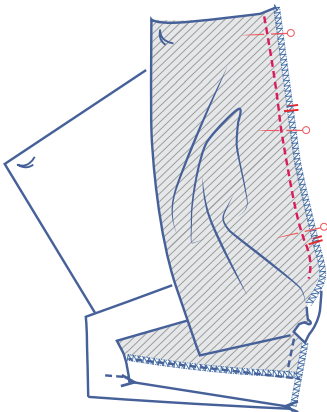
Finish the curved raw edge of sleeve A using an overlock stitch.



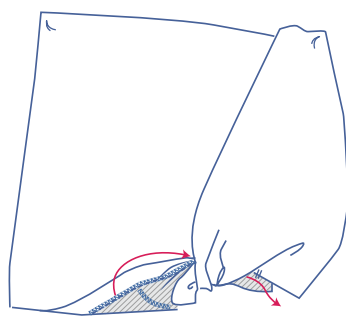
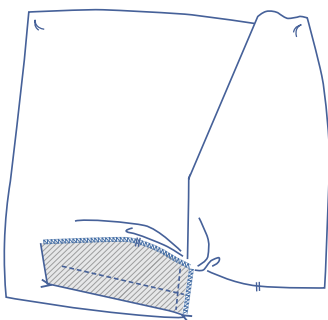
Twist the part of sleeve that is horizontal: fold the side with single nicks down, at the same time making sure the wrong side faces up.



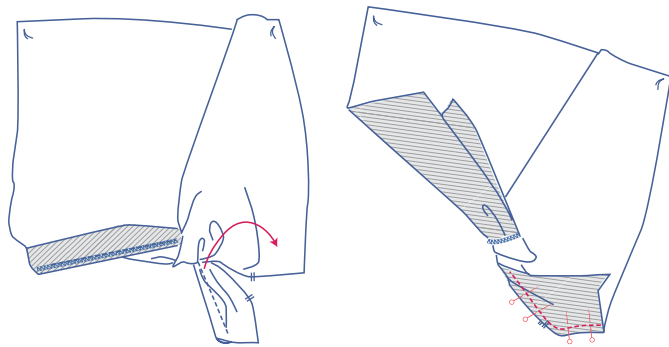
Continue to twist the piece up and lay the side with the single nicks onto the other side with the nicks of sleeve A, with the right sides of the fabric facing each other.



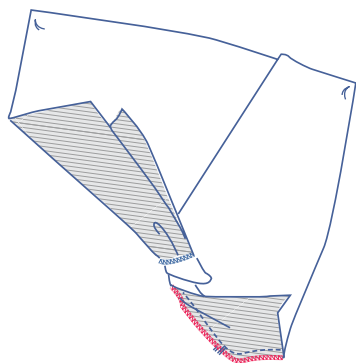
Pin and sew in place. A small opening is left so that sleeve B can be slid through this later.



Twist the bottom-most side of sleeve B up, with the wrong side facing up. Slide through the opening.

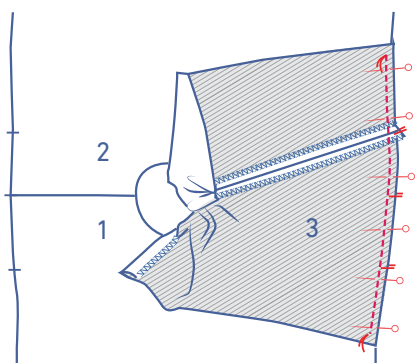


Pin the side of sleeve B with the double nicks to the the side of sleeve A with the double nicks and sew in place.



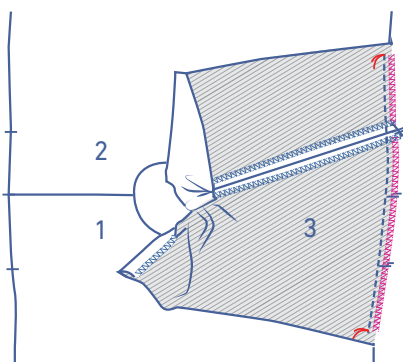
Finish the seam using an overlock stitch.

3

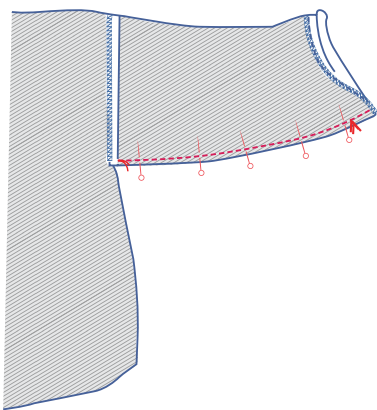


Pin the top of the sleeve to the armhole with the matching nicks. The single nick at the top matches the shoulder seam exactly.

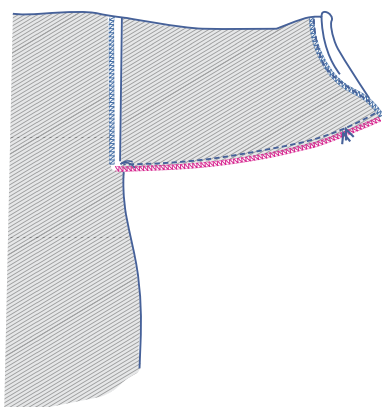
Sew securely between the basting threads.



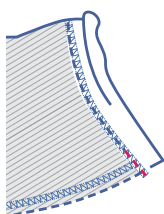
Finish the raw edges using an overlock stitch between the basting threads.



Pin and sew the underarm seams. Move the sleeve cap's seam allowance out of the way and fold the hem allowance all the way down.

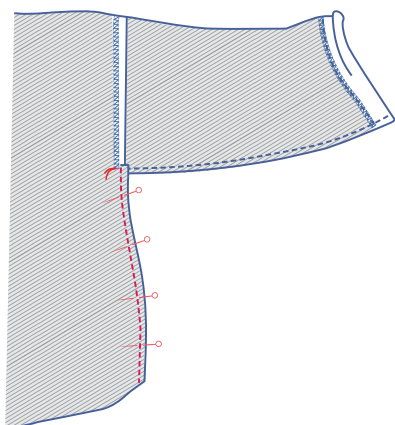


Bind the raw edges using an overlock stitch.

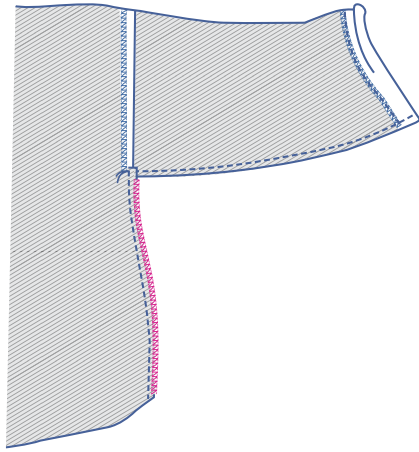


Fold the hem allowance over and continue stitching together.

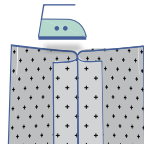
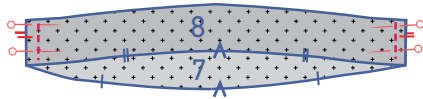
4



Pin and sew the side seams that have not been overlocked. Move the seam allowance of the underarm seams out of the way.

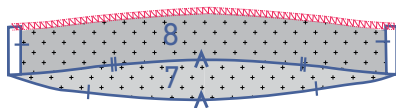


Bind the raw edges using an overlock stitch.

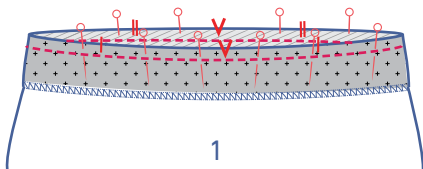


5

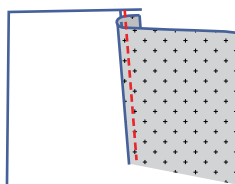
Pin and sew the side seams (the short sides marked with nicks) of the hem facings F (7) and B (8). Press the seam allowance open.



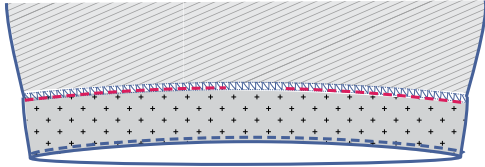
Finish the edge without nicks using an overlock stitch.



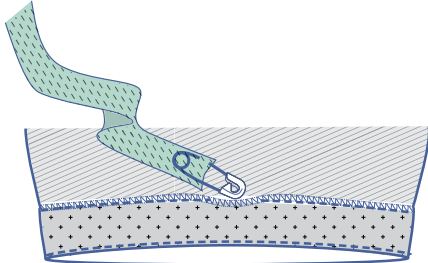
Pin and sew the bottom of the combined hem facing to the hem of the work piece with the corresponding nicks matching exactly.



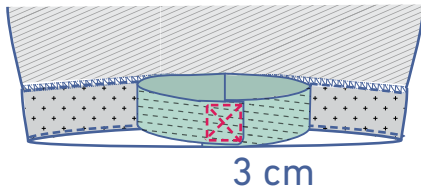
Fold the facing and the seam allowance out of the way and sew the facing into place 2 mm away from the seam and through all the layers of fabric.



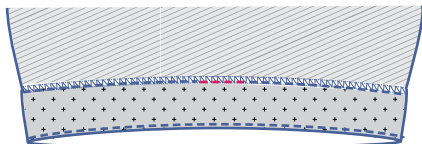
Press the facing back up and toward the wrong side. Sew this in place right next to the edge. Leave an opening so that the elastic band can be threaded through later.



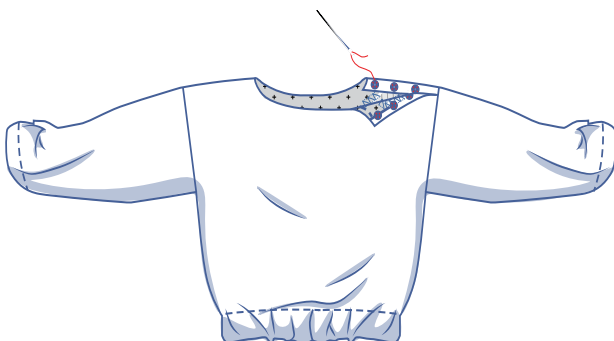
Thread the elastic through the casing.



Allow 3 cm of the ends to overlap and sew in place using a box X stitch.



Pull the elastic through the tunnel completely and sew the opening closed.



6

Sew the snaps on at the places indicated.