

Gigi by Fibre ⚡ood

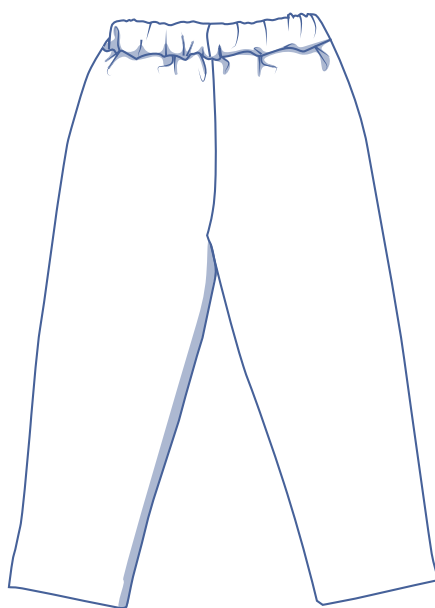
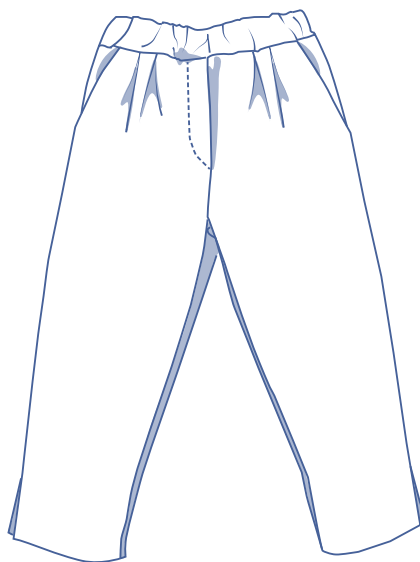


Gigi by Fibre Mood



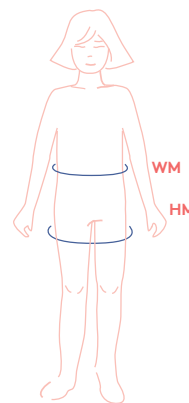
2 - 14 years

An ankle length pair of pants with pleats, side pockets and splits along the side seams. The model has an elastic waistband.



sizing chart

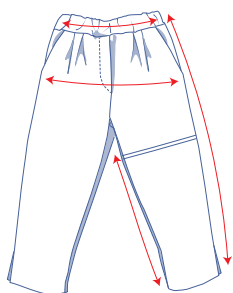
size (EU)	2	3	4	5	6	8	10	12	14
WM (cm)	50	52	53	54	55	57	60	62	66
HM (cm)	56	58	60	62	64	68	72	76	80



Waistline measurement (WM): measure horizontally at the narrowest point of the body.

Hip measurement (HM): Measure horizontally at the widest point of the lower body.

measurements



size	2	3	4	5	6	8	10	12	14
side length* (cm)	43	47	51	55	59	67	75	83	91
inseam length (cm)	27.25	31	34.5	38	41.75	48.75	56	63	70.25
1/2 waistband circumference (cm)	27.75	28.75	29.75	30.75	31.75	33.75	35.75	37.75	39.75
1/2 hip circumference (cm)	34.25	35.25	36.25	37.25	38.25	40.25	42.25	44.25	46.5

* The side length is the size including the waistband.

** Half of the waistband's circumference does not include an elastic band.

Compare the stated lengths to the measured or desired lengths. **Lengthen** or **shorten** the pant legs by cutting the pattern pieces at the indicated double lines and then spreading the pattern pieces out X cm from each other or overlapping them, where necessary. Make sure that the CF and CB lines and the side seams are always straight.



IMPORTANT

Adapt the amount of fabric used to the alterations that you are making to the pattern!

supplies



- Thread
- Iron-on interfacing: 10 cm
- Light cotton or lining: 30 cm
- Elastic band: see table
- Fabric: see table

size	2	3	4	5	6	8	10	12	14
elastic band* (cm)	43	47	51	55	59	67	75	83	91

* 3 cm wide

size	2	3	4	5	6	8	10	12	14
fabric* (cm)	60	65	70	75	80	85	95	105	110

* fabric 140-164 cm wide, glitter knit jersey

fabric advice

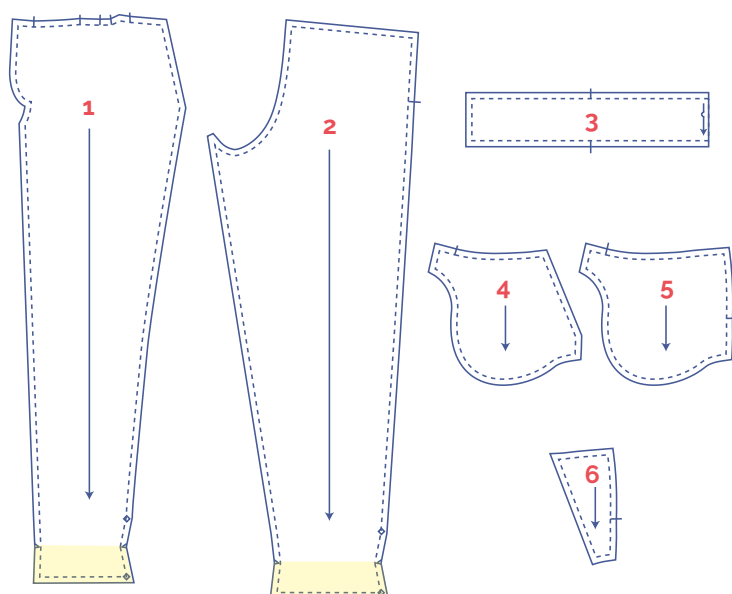


Make the Gigi pants using French terry cloth, sweater fabric, Ponte Roma, etc.

pattern pieces & seam allowances (in cm)

Draw 1 cm all the way around the paper pattern pieces unless stated otherwise in the illustrations.

The side of piece 3 lying on the fabric fold (—>) does not have a seam allowance.



- 1 front: 2x
- 2 back: 2x
- 3 waistband: 1x on fabric fold
- 4 inner pocket lining: 2x (light cotton)
- 5 pocket: 2x (light cotton)
- 6 pocket opening: 2x

IMPORTANT

The pieces highlighted in light yellow have iron-on interfacing attached to the wrong side.

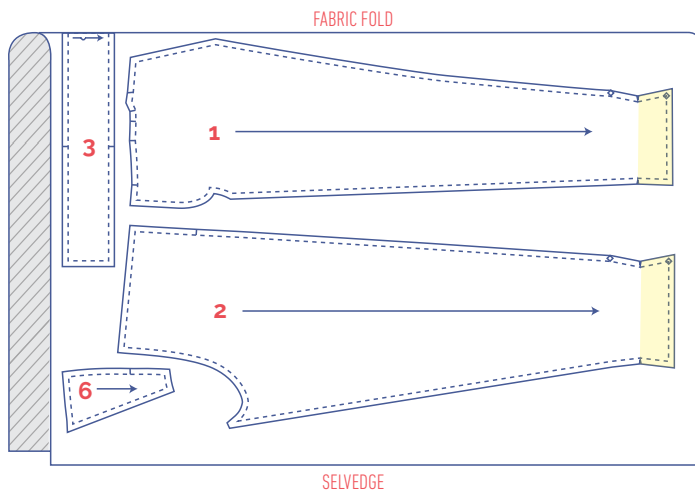
Nick the pattern paper and fabric at the places where a single vertical line (I) and double vertical lines (II) are indicated.

Cut a small corner (V) out of piece 3, which lies on the fabric fold, to mark the middle of the pieces.

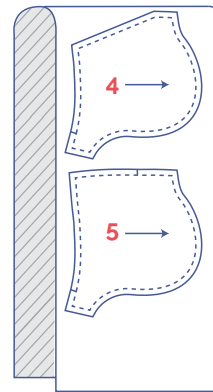
Mark the centre of where the split ends (◇) on pieces 1 and 2 using needle and thread.

fabric plan

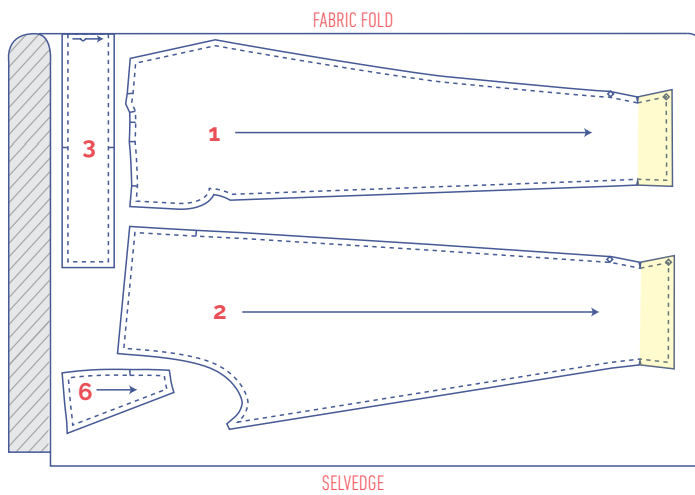
1. for fabrics 140 cm wide



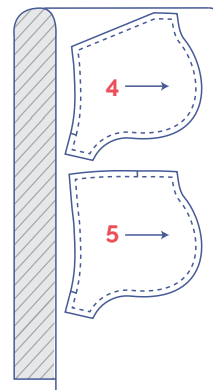
for light cotton or lining 140 cm wide



2. for fabrics 164 cm wide (= glitter knit jersey)



for light cotton or lining 140 cm wide



sewing instructions



The method used to finish sewing the garment depends on the fabric used. The pieces are always sewn together with the right sides of the fabric matching exactly, unless stated otherwise.

Key with symbols



→ right side



→ wrong side



→ iron-on interfacing



→ elastic band



→ cotton or light-weight fabric
right side



→ cotton or light-weight fabric
wrong side

CF

→ centre front

CB

→ centre back

RF

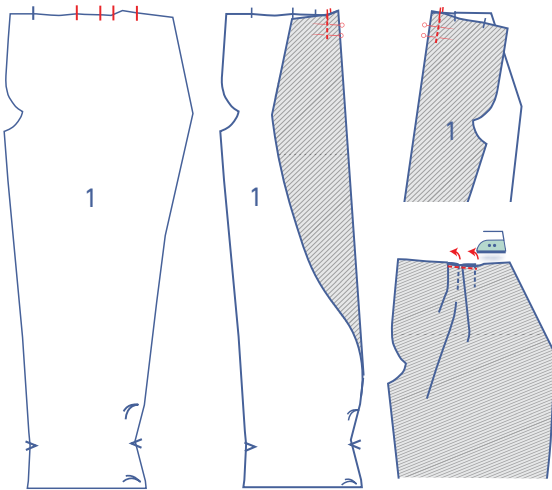
→ right front

LF

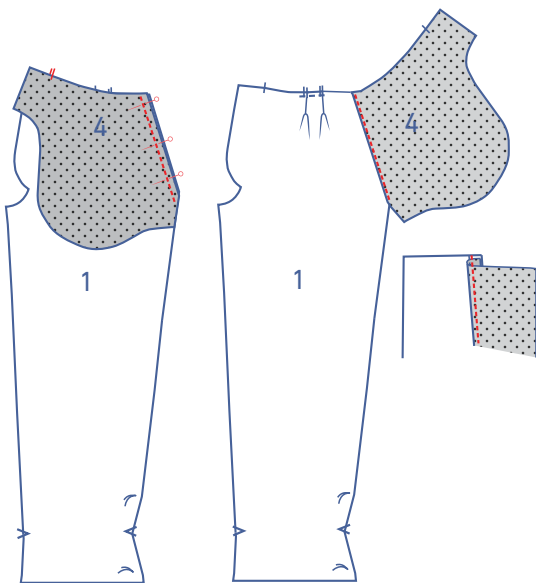
→ left front

1

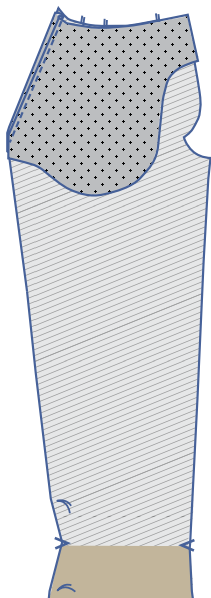
Fold the nicks of the front facing (1) together with the right side of the fabric facing inward and sew a vertical stitch of around 3 cm. Fold the pleat allowance to the CF and sew these together at 0.5 cm from the waist seam.

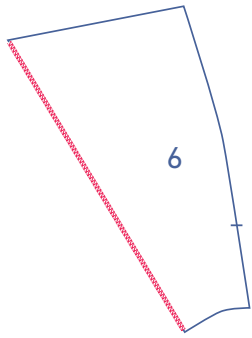


Pin the slanted side of the inner pocket lining (4) and the front together and sew in place. Fold the inner pocket lining and the seam allowance out of the way and sew the inner pocket lining into place at 2 mm from the seam through all layers of fabric.

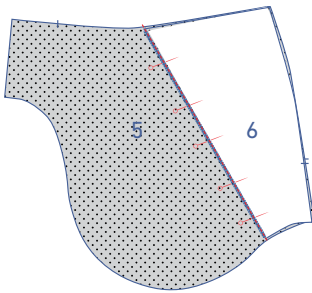


Fold the bag all the way over to the wrong side.

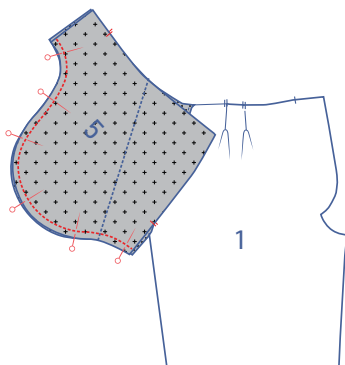




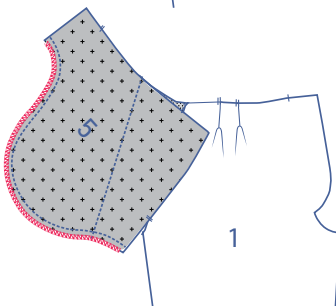
Finish the slanted side of the pocket opening (6) using an overlock stitch.



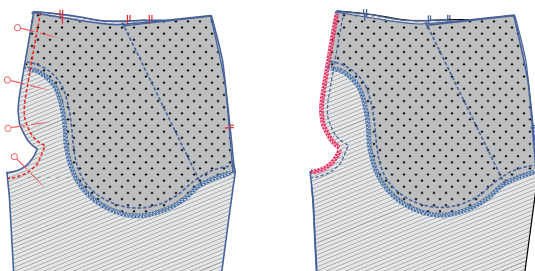
Pin the pocket opening (6) to the pocket lining (5) and sew the piece in place a few millimeters from the edge.



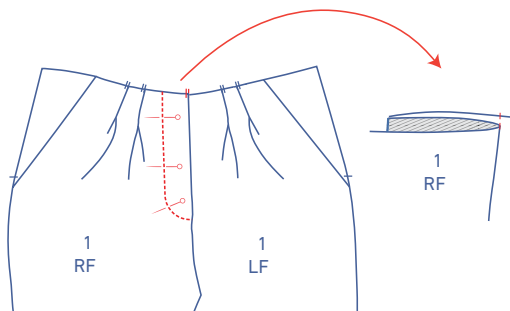
Pin the contours of the bottom of the pocket and the pocket lining together and sew in place.



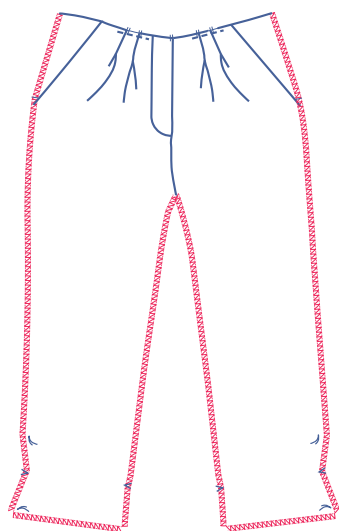
Finish the bottom of the pocket pieces using an overlock stitch.



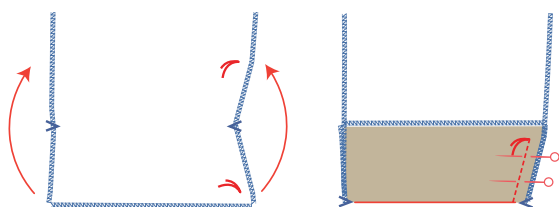
Pin the CF seam (+ the pocket pieces) together and sew in place, finishing with an overlock stitch.



Fold the RF facing over to the CF nick. Top stitch the RF along the shape of the zipper closure.

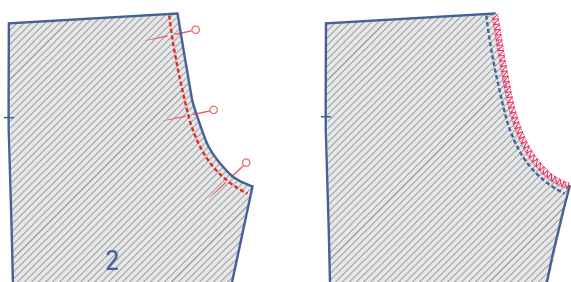


Use an overlock stitch to finish the hem, inseam and side seams too.



Fold the hem over to the right side of the front where the V notch is, with the basting stitches matching exactly. Sew the slanted side of the split to the side seam until you reach the basting thread. Now fold it inside out.

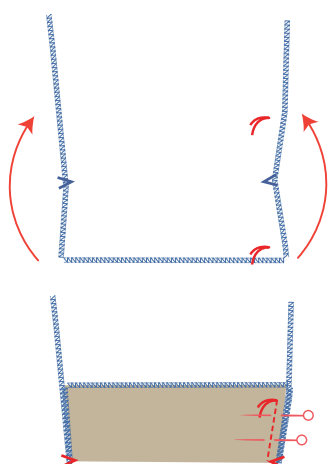
2



Pin and sew the CB of both back pieces (2) together. Finish the raw edges together using an overlock stitch.

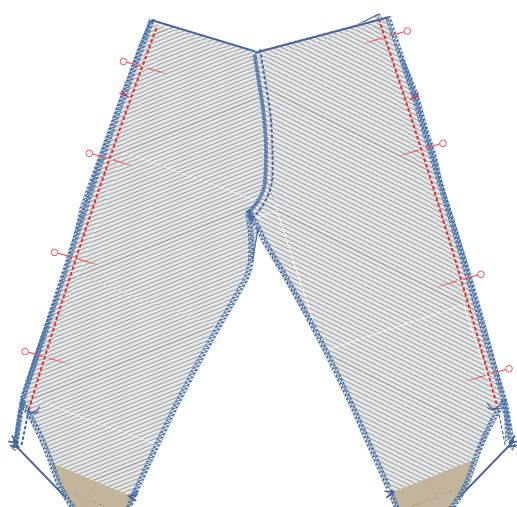


Use an overlock stitch to finish the hem, inseam and side seams.

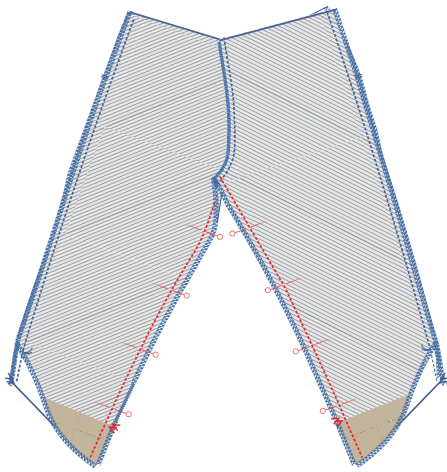


Fold the hem over to the right side of the front where the V notch is, with the basting stitches matching exactly. Sew the slanted side of the split to the side seam until you reach the basting thread. Now fold it inside out.

3

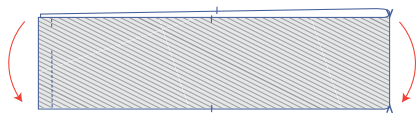
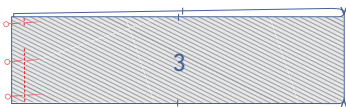
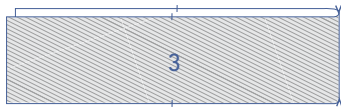


Pin the side seam up to where the basting thread starts and sew in place. Press the seam allowance open.



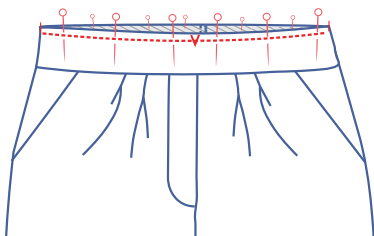
Pin the inseam up to the hem and sew in place. Press the seam allowance open.

4

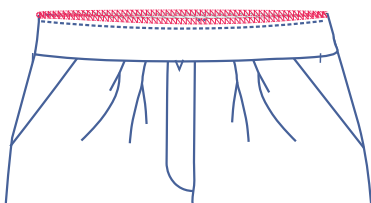


Fold the waistband (3) in half with the right side facing inward. Pin the short side in place and sew. Leave an opening so that the elastic band can be threaded through later.

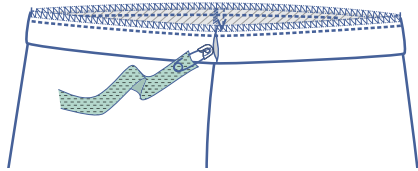
Fold the waistband in half in the other direction.



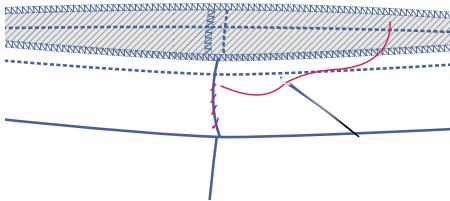
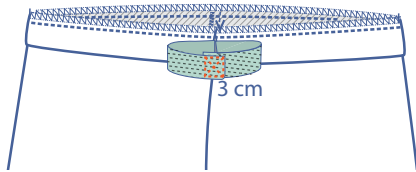
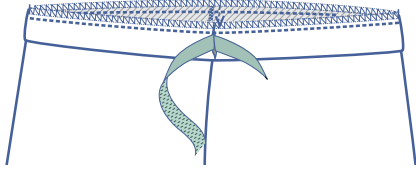
Pin the raw edges of the waistband to the waistline of the pants and sew in place. Finish the raw edges together using an overlock stitch.



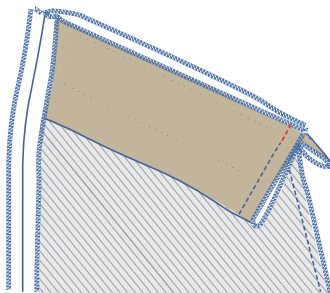
5



Thread the elastic band through the opening in the waistband. Allow 3 cm of the ends to overlap and sew together using a Box X stitch. Pull the elastic through the casing completely. Then sew the opening closed.



6



At the bottom, sew the ends of the shaped facing together and sew the hem around this into place.

